

Scintillator Tile Observations

Fredi Bock, Oskar Hartbrich, Everett Hagen,
Cordney Nash

**EXPERIENCE
ORNL**
MEET. EXPLORE. LEARN.

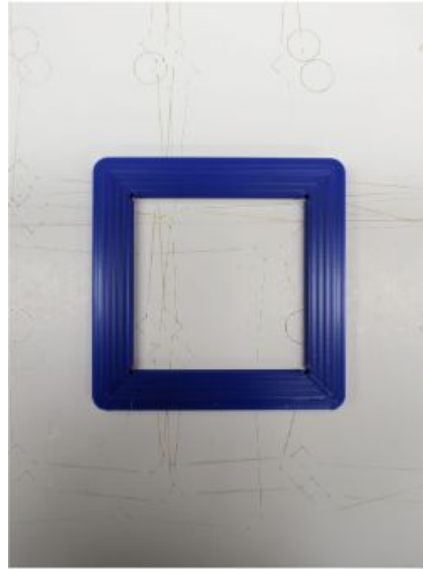
ORNL is managed by UT-Battelle, LLC for the US Department of Energy



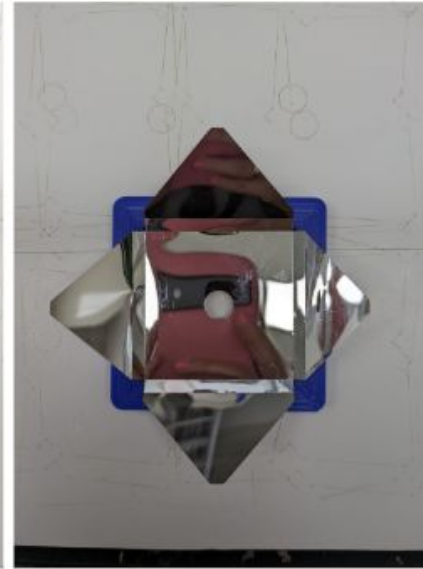
U.S. DEPARTMENT OF
ENERGY

Current Wrapping Procedures

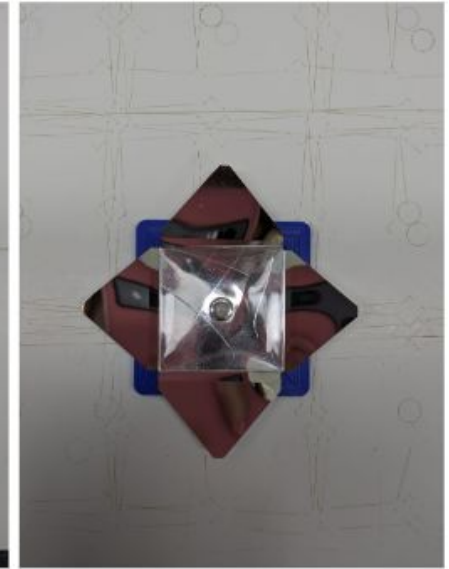
- Prepare Kapton tape and ESR foil
- 1. Remove the individual wrapper from the protective foil.
- 2. Place the individual wrapper on the folding frame
- 3. Place the tile on the individual wrapper with the dimple facing the bottom
- 4. Push the tile down inside the folding frame
- 5. Fold the wrap around the tile, pushing down the sides.
- 6. Use the prepared piece of Kapton tape to tape the bigger flaps together.



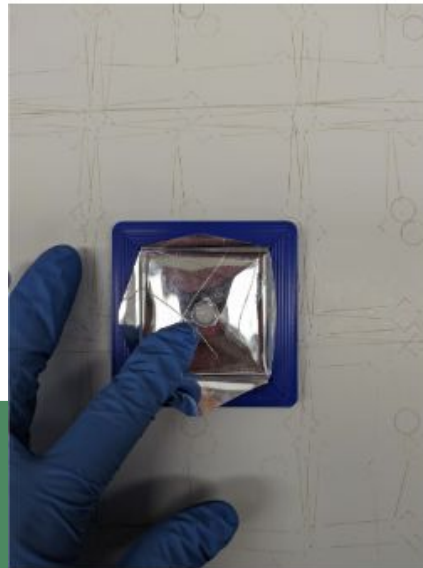
(a)



(b)



(c)



(d)



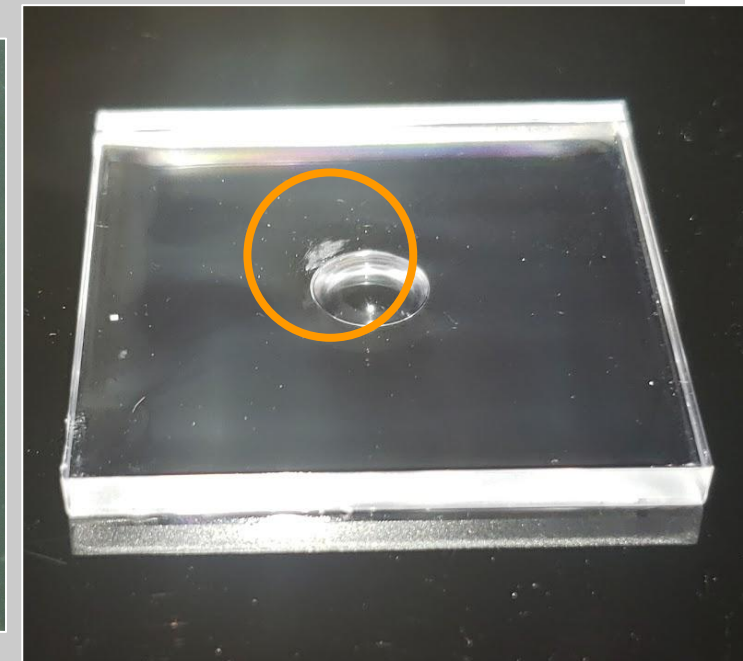
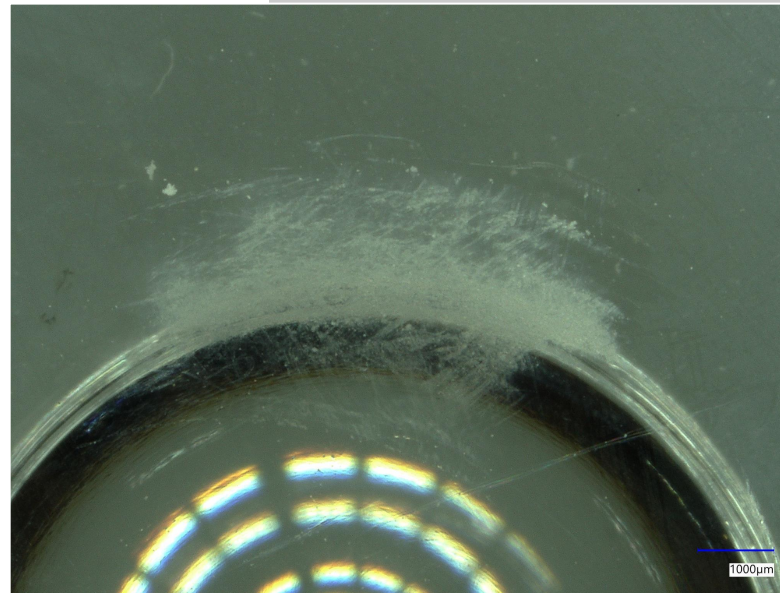
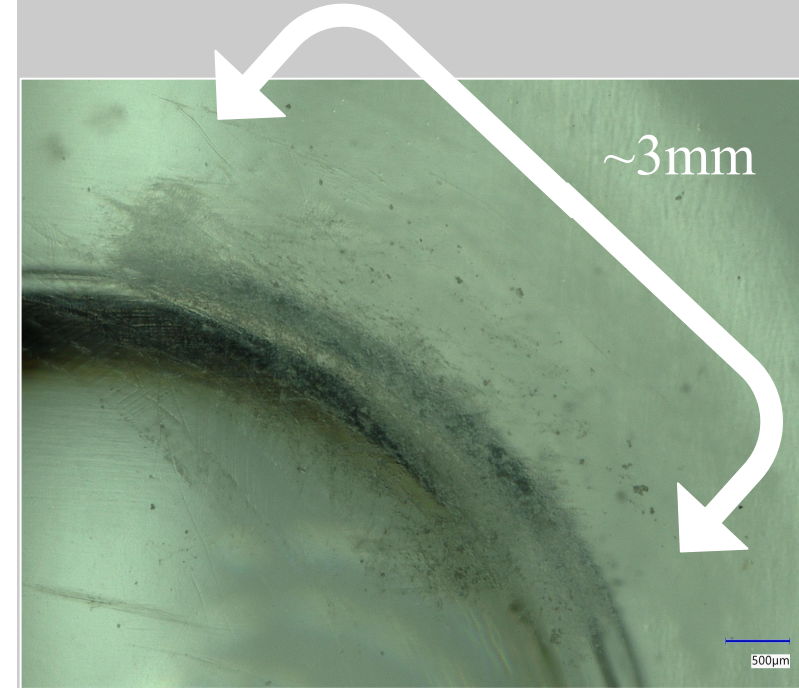
(e)

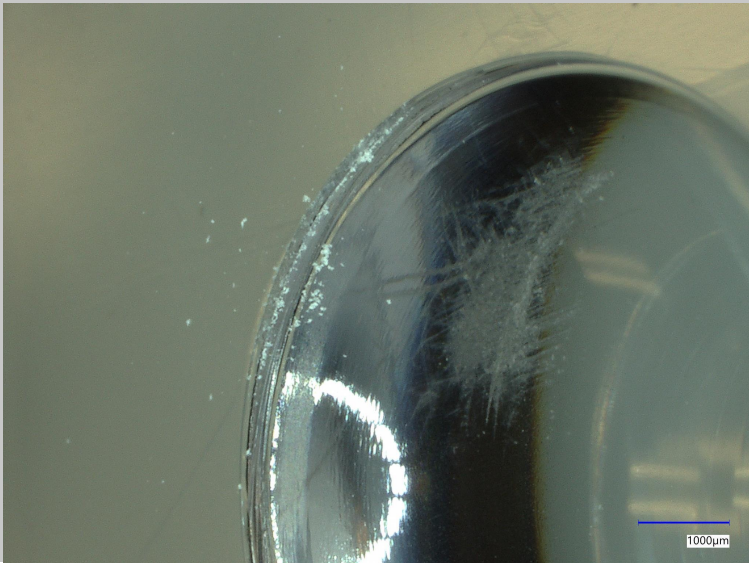
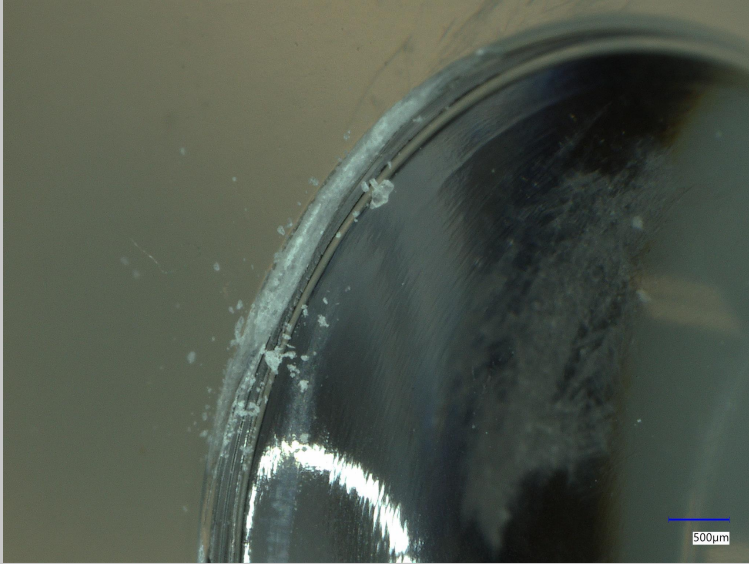


(f)

Scratches on the Tile

- Most scratches are 2-5mm long
- We've sorted them into 3 categories, no scratch, ≤ 3 mm and >3 mm.
 - ~ 35% no scratch
 - ~ 25% ≤ 3 mm
 - ~ 40% >3 mm





The Cause:

- The dimples are coming with small grates which scratch the other tile that they are stacked on top of
- Tested by taking the dimple and rubbing it on the back of another tile, which created the same scratches we see on others

Testing the Impact

- Currently testing with cosmics to see if the scratches makes a difference

