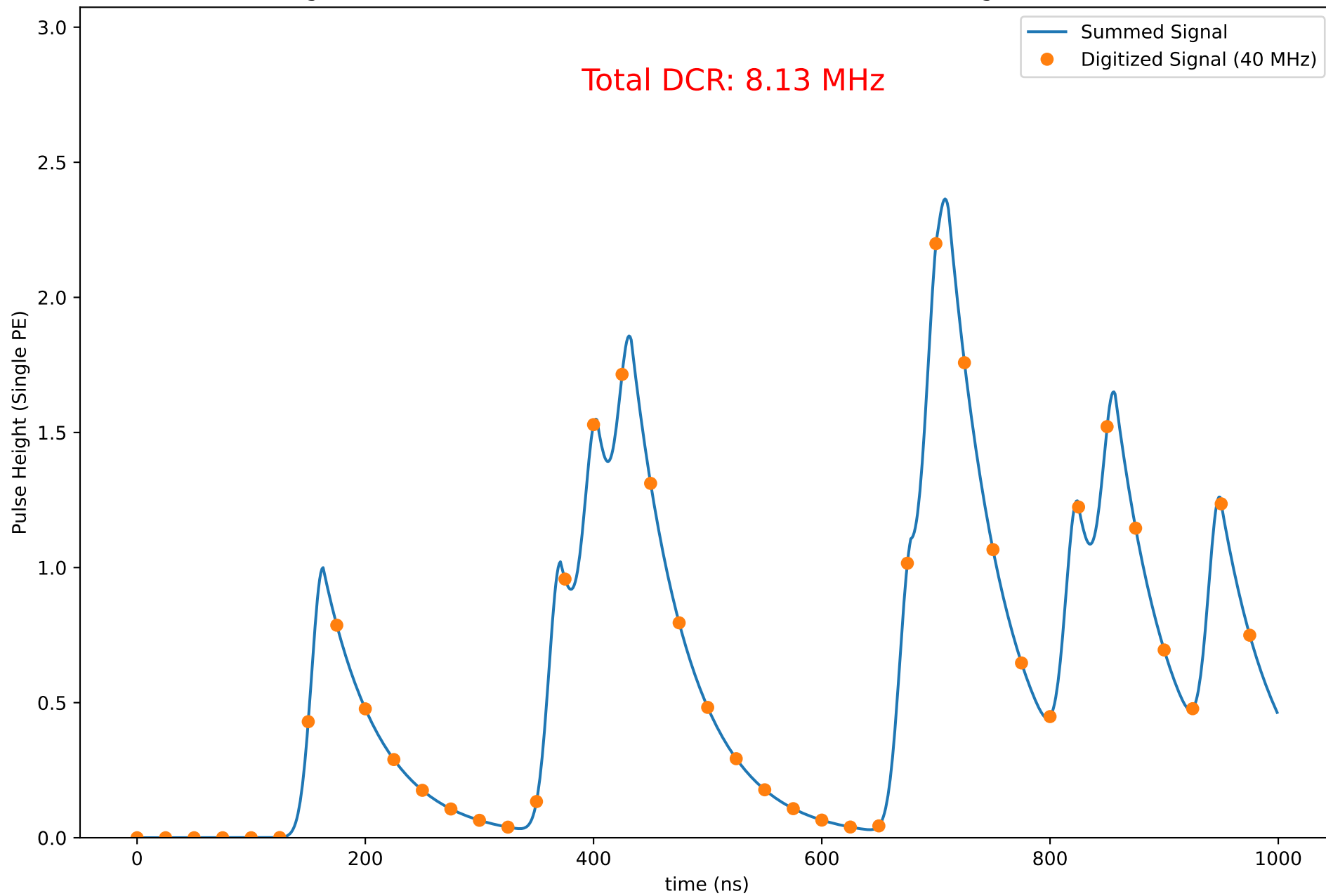
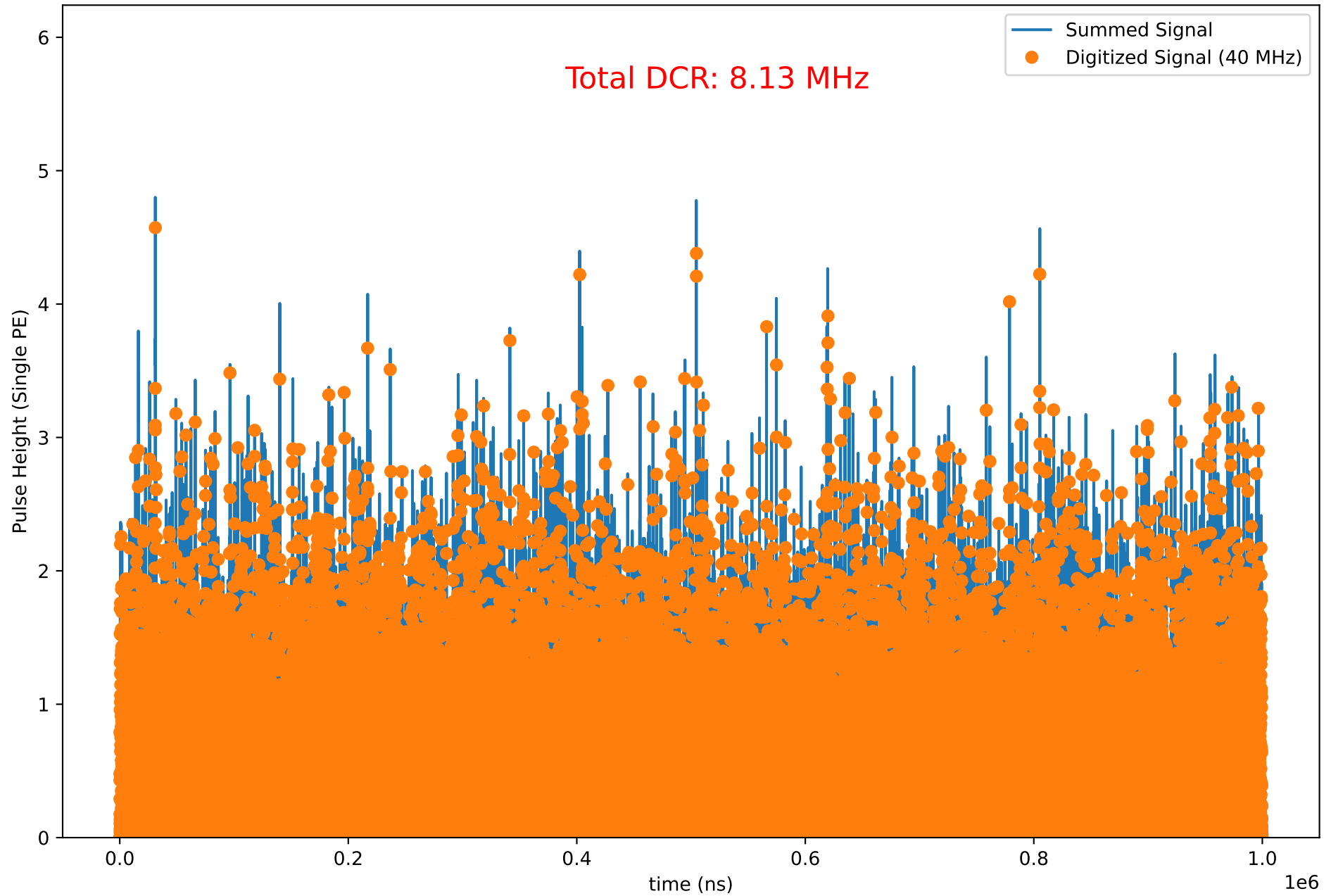


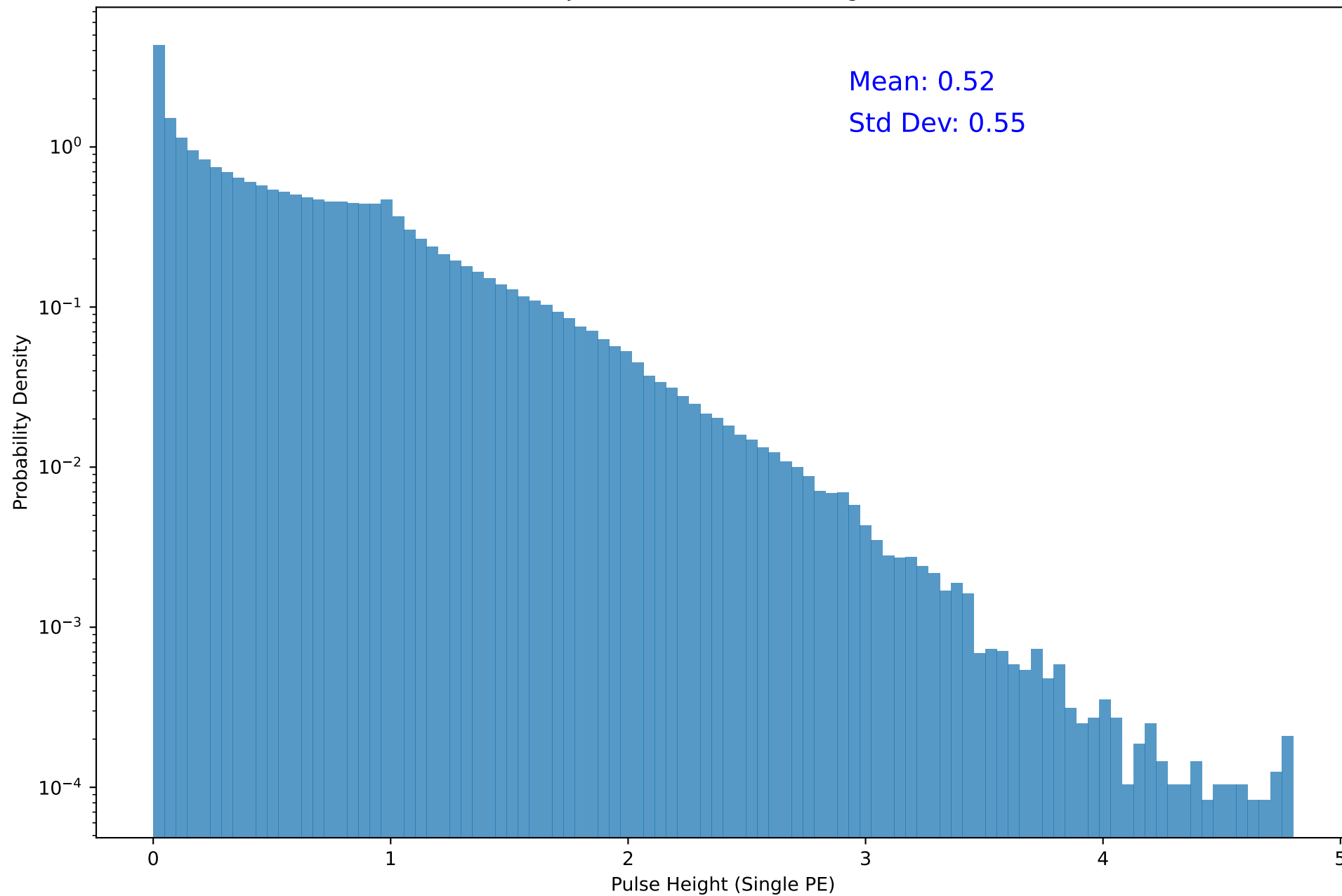
Signals for SiPM = S13360 at T = 5C, irradiated = 1, Annealing factor = 10



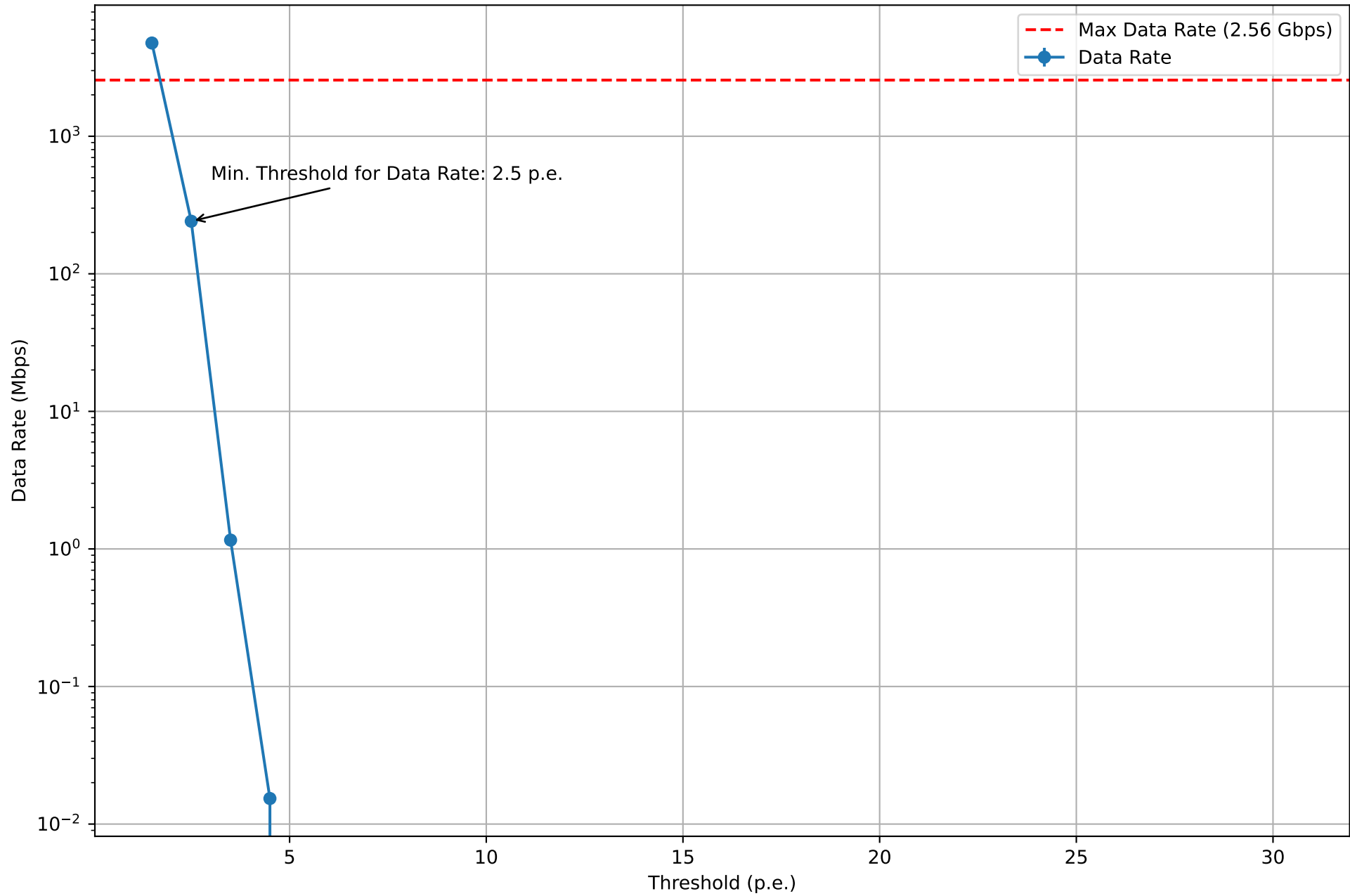
Signals for SiPM = S13360 at T = 5C, irradiated = 1, Annealing factor = 10



Projection onto Y-axis (Histogram)



Data Rate vs Threshold for SiPM = S13360 at T = 5C, irradiated = 1, Annealing factor = 10, 20 channels



Noise Hit Rate vs Threshold for SiPM = S13360 at T = 5C, irradiated = 1, Annealing factor = 10, 20 channels

