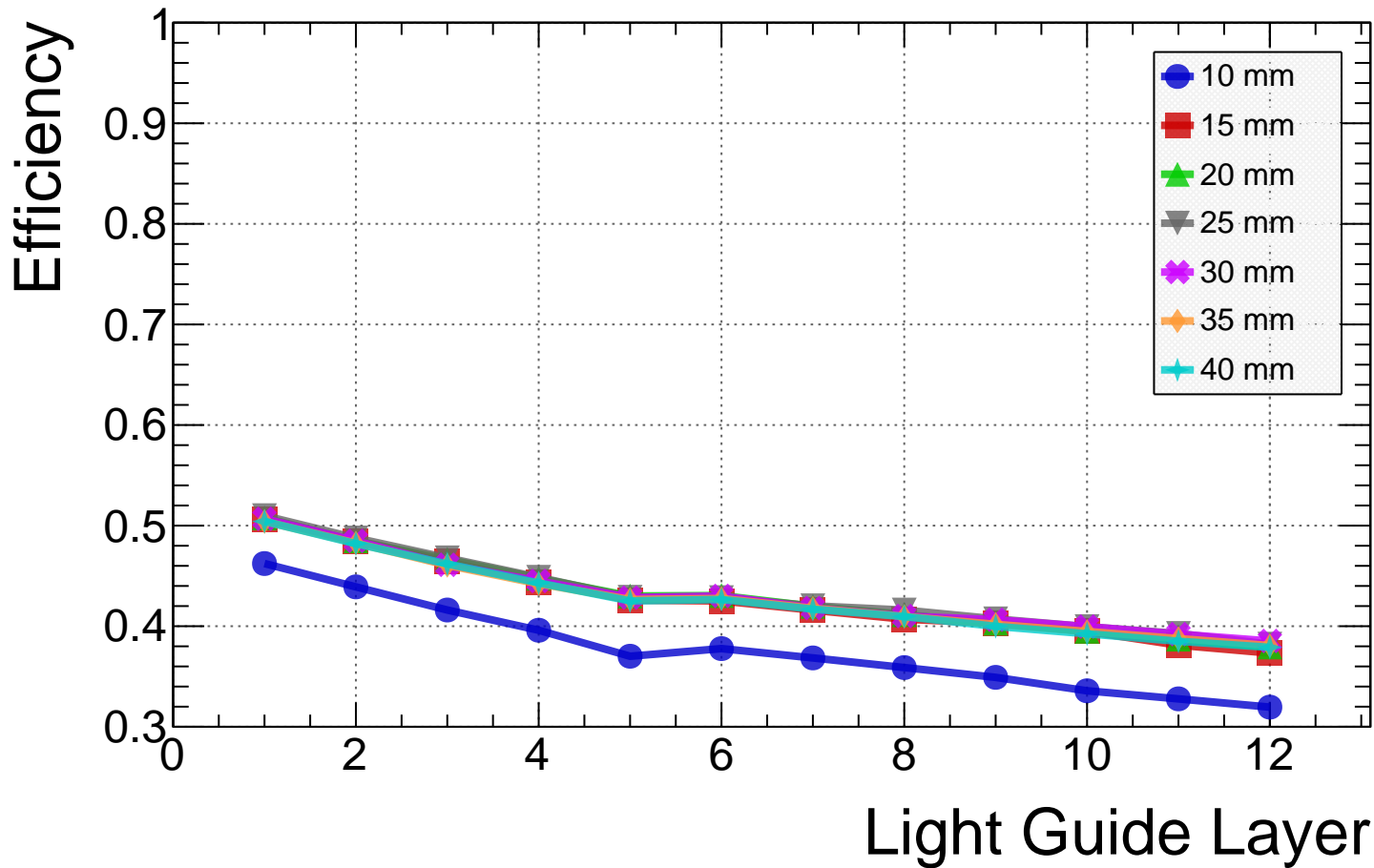
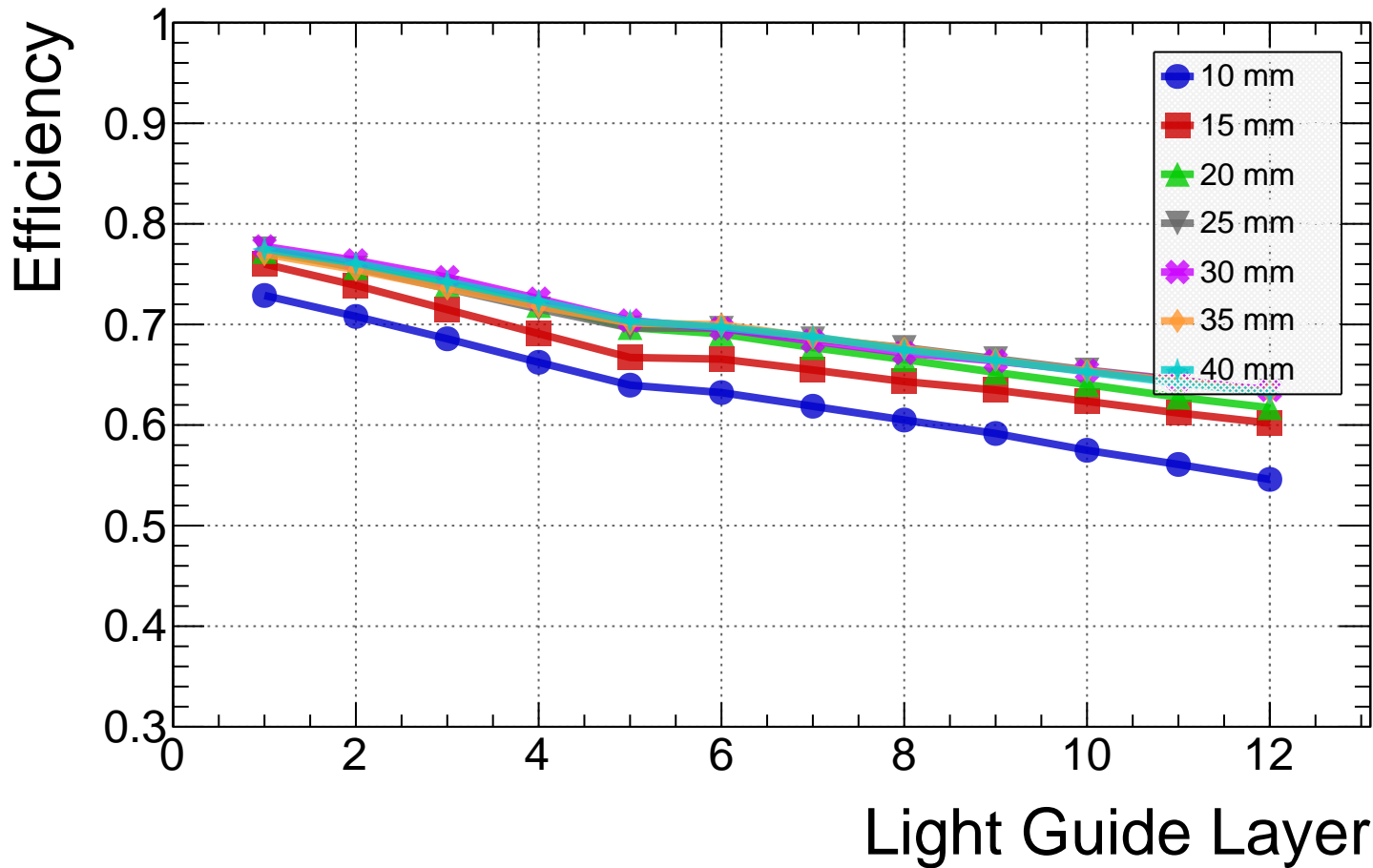


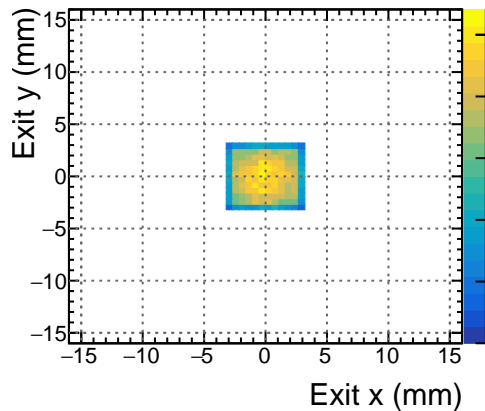
BICmini air S13360-6025CS Efficiency vs. Layer



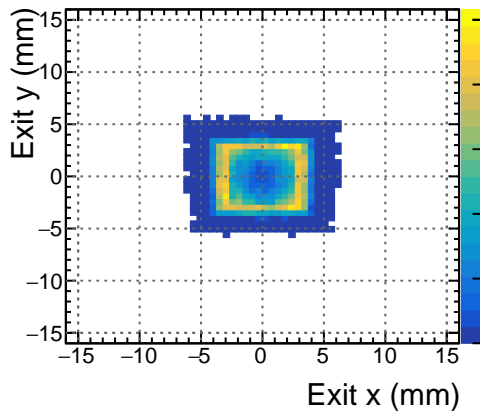
BICmini cookie S13360-6025CS Efficiency vs. Layer



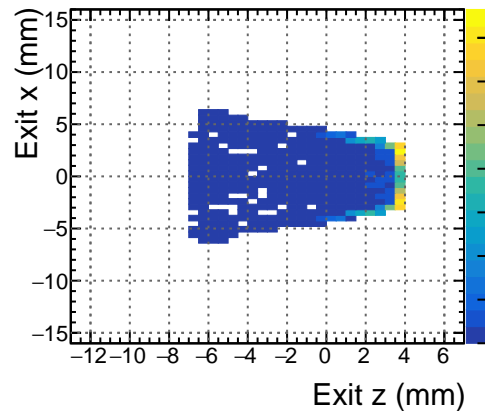
bm5 10 mm Exit y vs. x (Success)



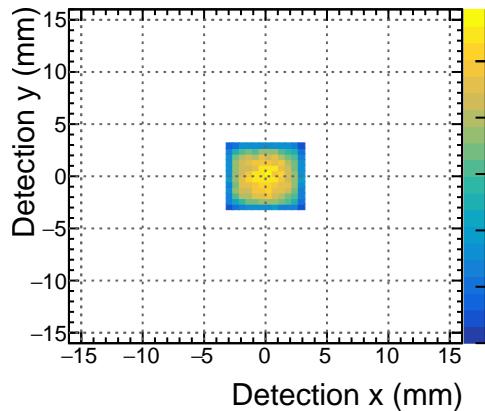
bm5 10 mm Exit y vs. x (Failure)



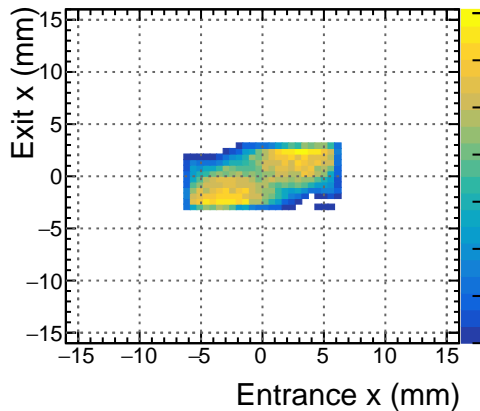
bm5 10 mm Exit x vs. z (Failure)



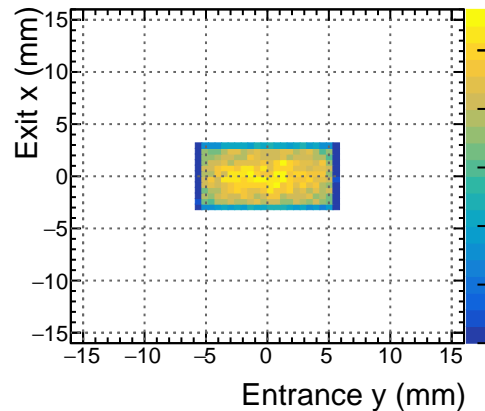
bm5 10 mm Detection y vs. x (Success)



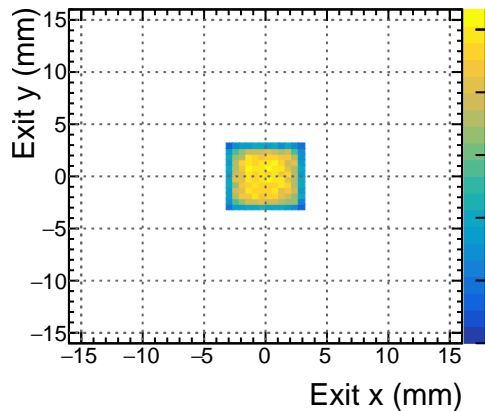
bm5 10 mm Exit x vs. Entrance x (Success)



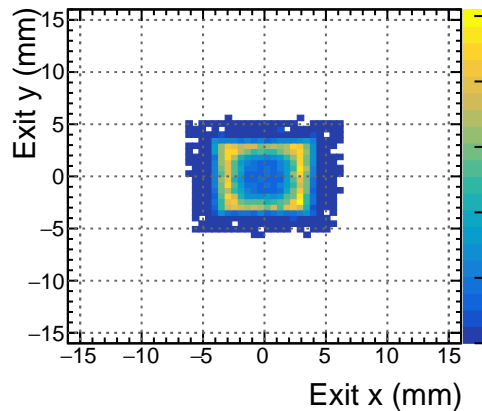
bm5 10 mm Exit x vs. Entrance y (Success)



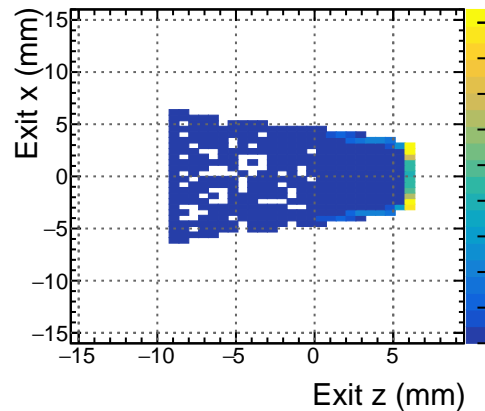
bm5 15 mm Exit y vs. x (Success)



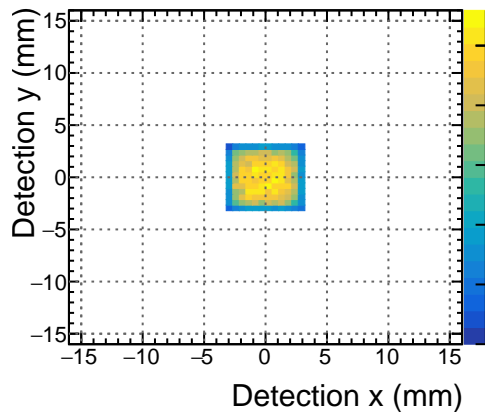
bm5 15 mm Exit y vs. x (Failure)



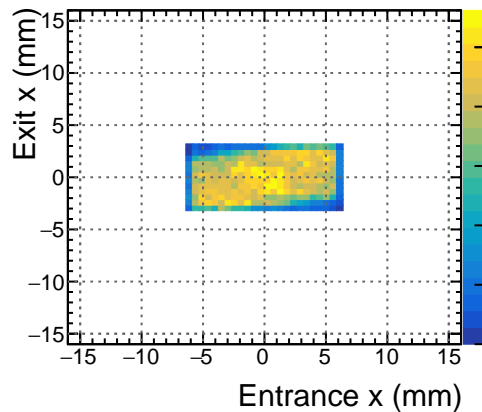
bm5 15 mm Exit x vs. z (Failure)



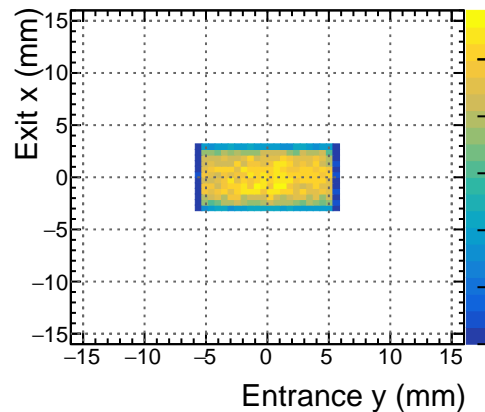
bm5 15 mm Detection y vs. x (Success)



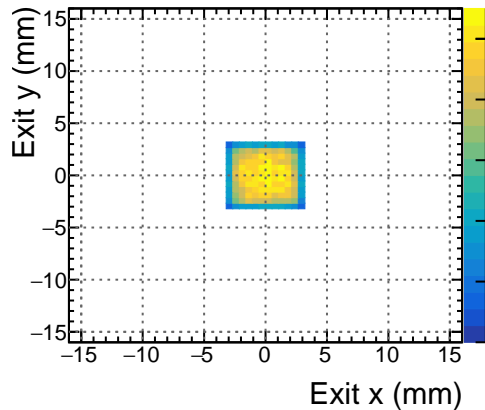
bm5 15 mm Exit x vs. Entrance x (Success)



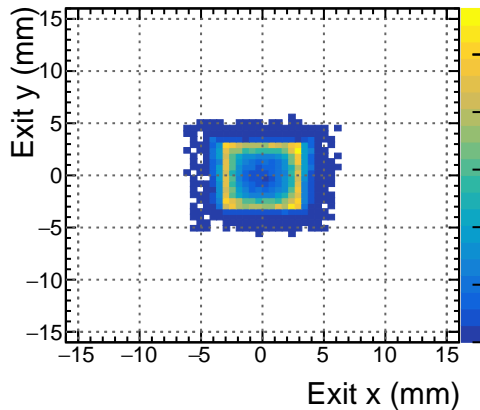
bm5 15 mm Exit x vs. Entrance y (Success)



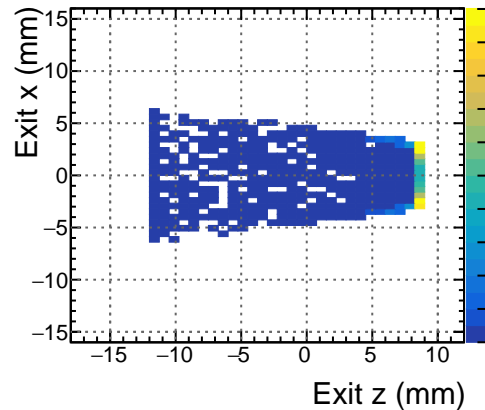
bm5 20 mm Exit y vs. x (Success)



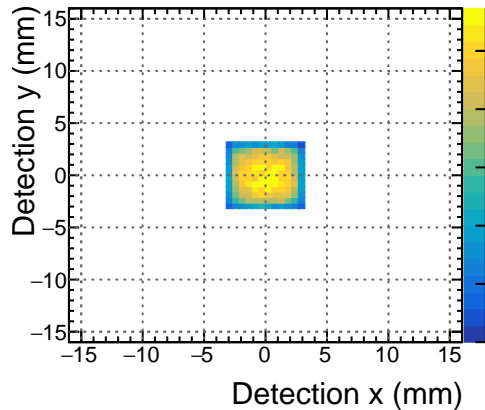
bm5 20 mm Exit y vs. x (Failure)



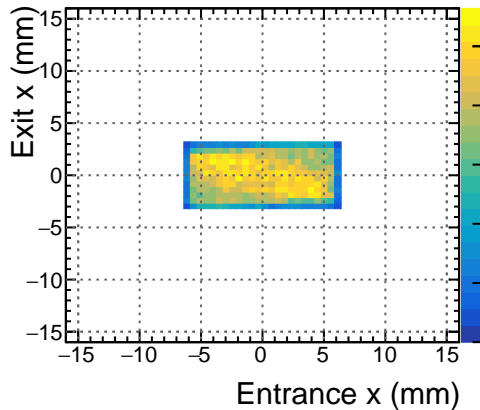
bm5 20 mm Exit x vs. z (Failure)



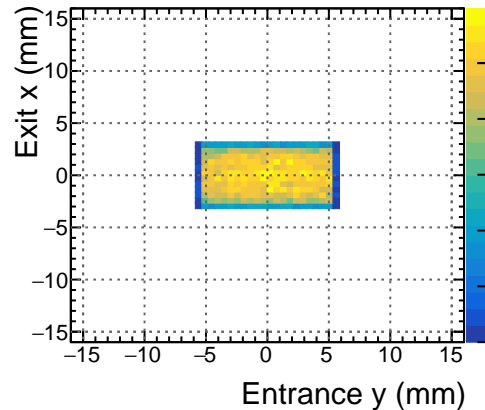
bm5 20 mm Detection y vs. x (Success)



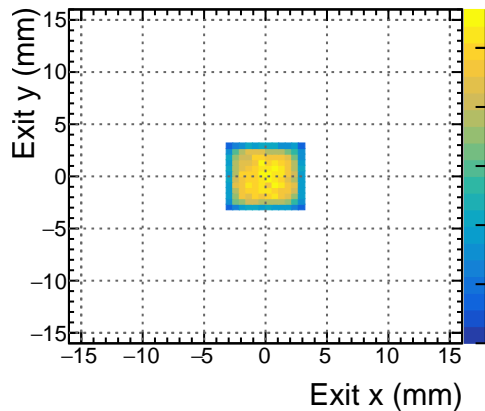
bm5 20 mm Exit x vs. Entrance x (Success)



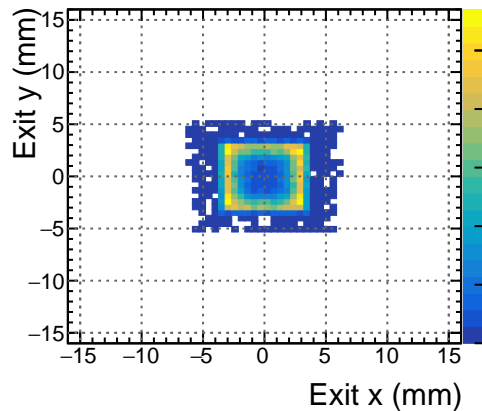
bm5 20 mm Exit x vs. Entrance y (Success)



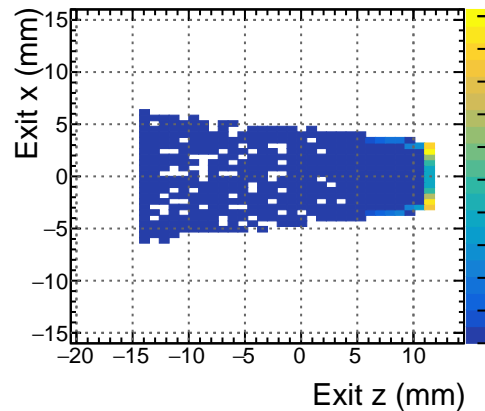
bm5 25 mm Exit y vs. x (Success)



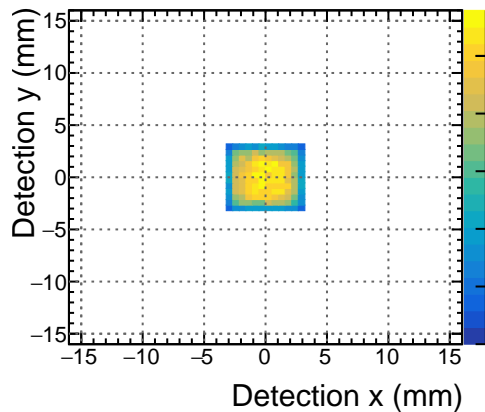
bm5 25 mm Exit y vs. x (Failure)



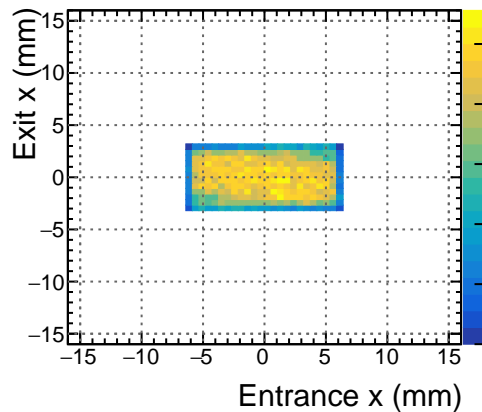
bm5 25 mm Exit x vs. z (Failure)



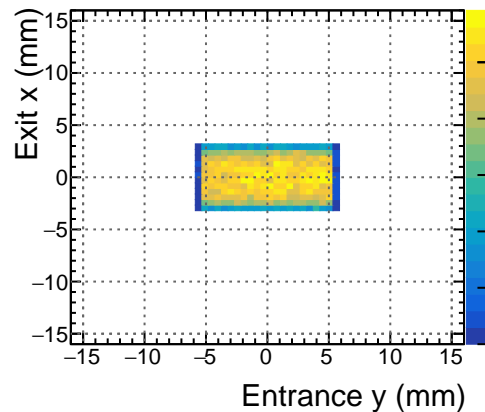
bm5 25 mm Detection y vs. x (Success)



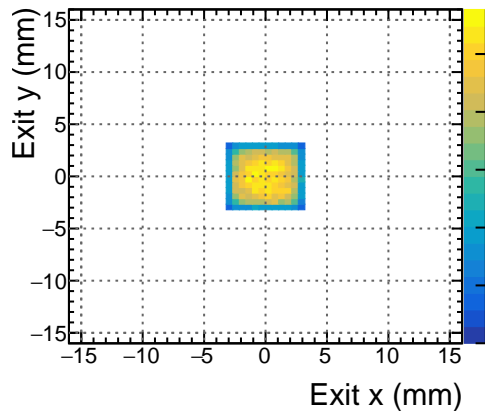
bm5 25 mm Exit x vs. Entrance x (Success)



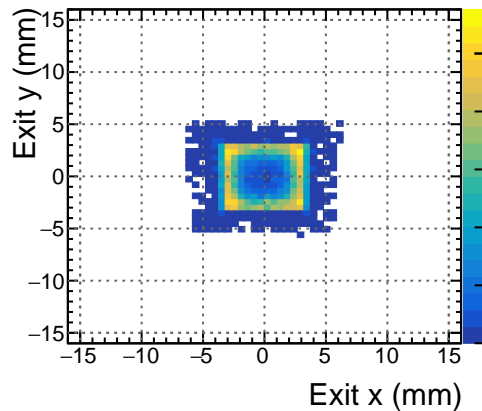
bm5 25 mm Exit x vs. Entrance y (Success)



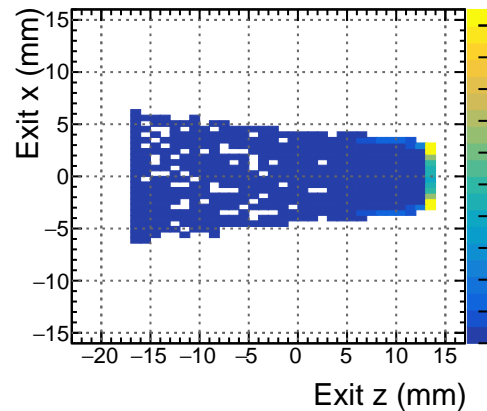
bm5 30 mm Exit y vs. x (Success)



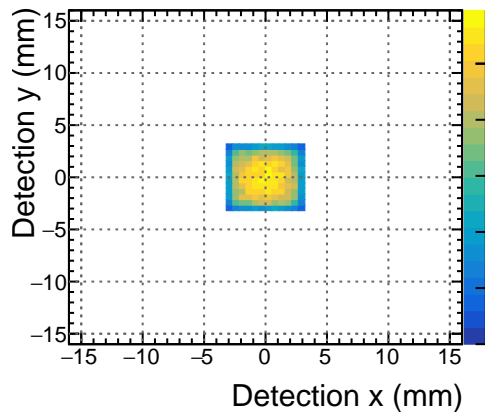
bm5 30 mm Exit y vs. x (Failure)



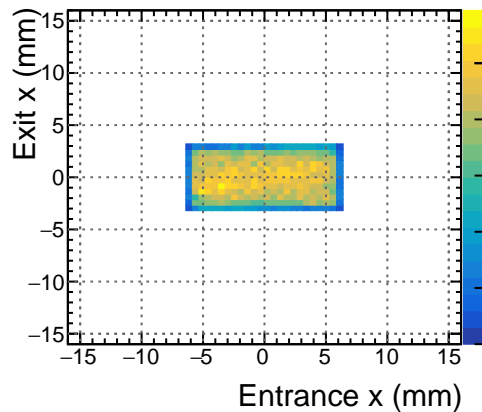
bm5 30 mm Exit x vs. z (Failure)



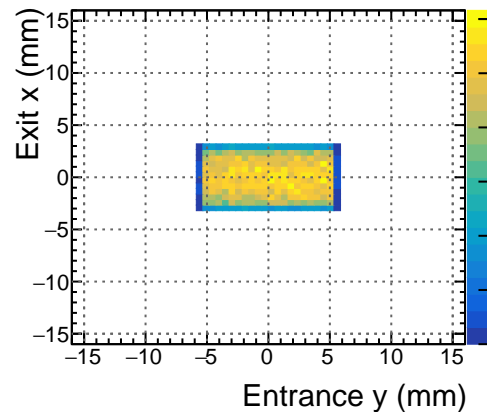
bm5 30 mm Detection y vs. x (Success)



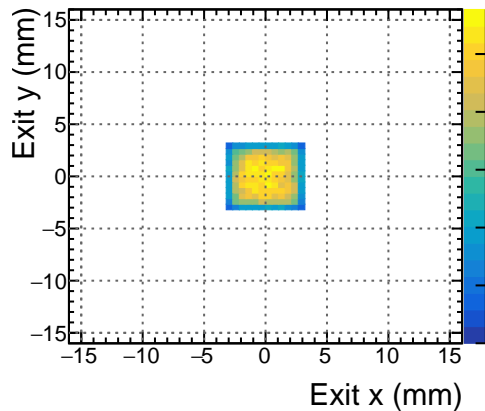
bm5 30 mm Exit x vs. Entrance x (Success)



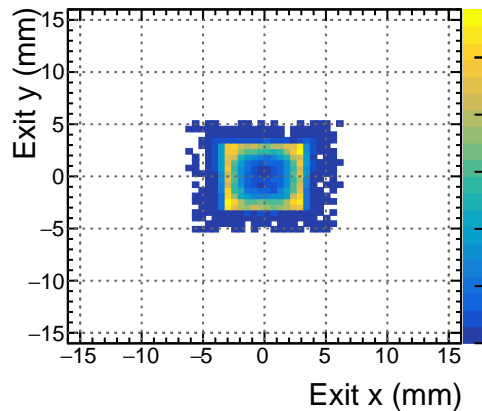
bm5 30 mm Exit x vs. Entrance y (Success)



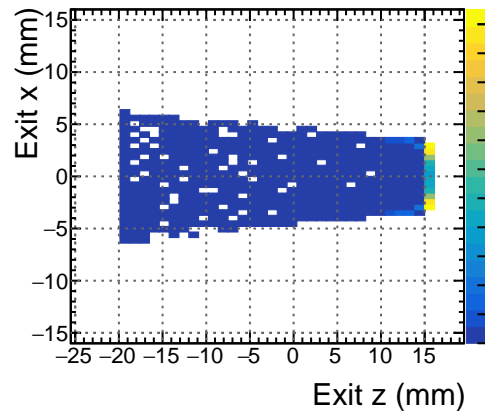
bm5 35 mm Exit y vs. x (Success)



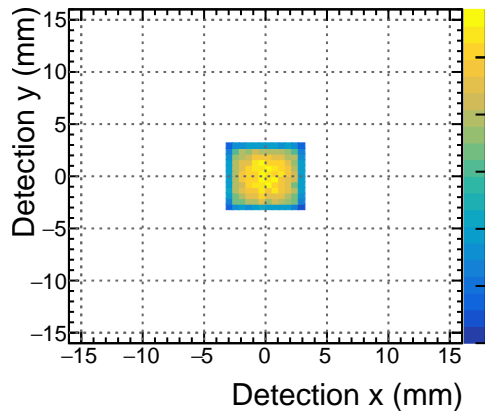
bm5 35 mm Exit y vs. x (Failure)



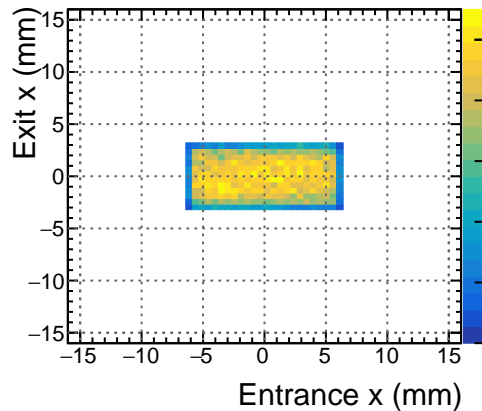
bm5 35 mm Exit x vs. z (Failure)



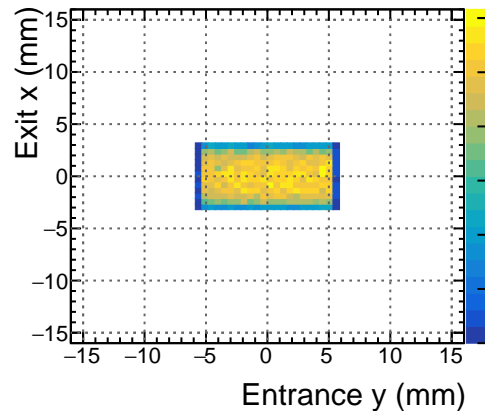
bm5 35 mm Detection y vs. x (Success)



bm5 35 mm Exit x vs. Entrance x (Success)

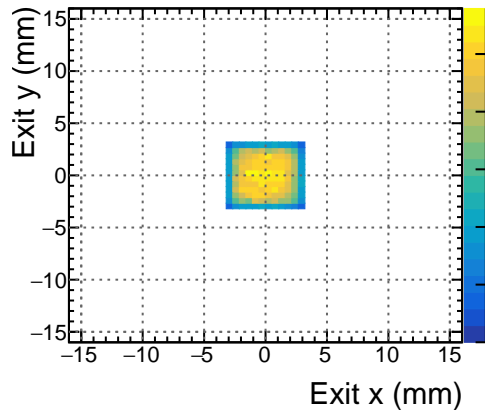


bm5 35 mm Exit x vs. Entrance y (Success)

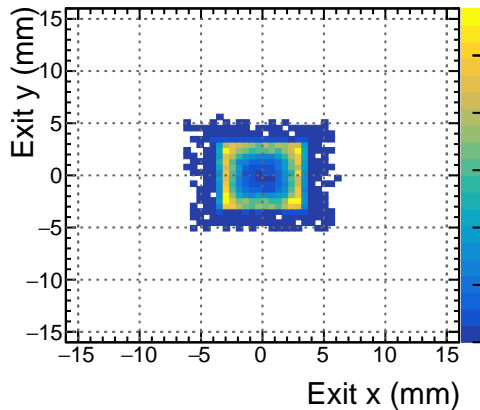




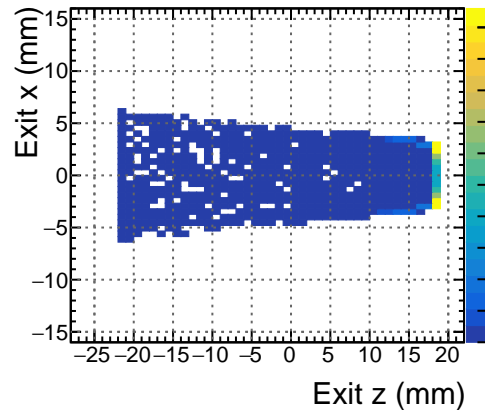
bm5 40 mm Exit y vs. x (Success)



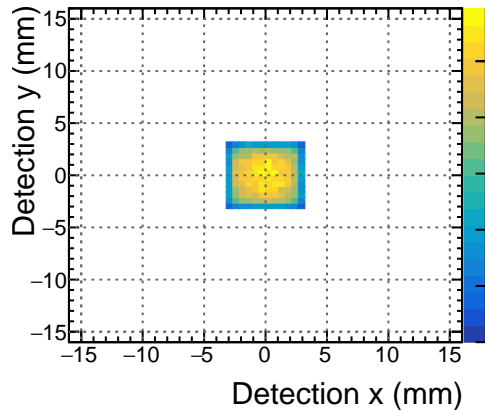
bm5 40 mm Exit y vs. x (Failure)



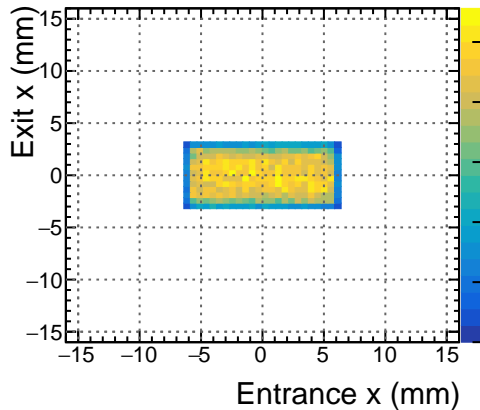
bm5 40 mm Exit x vs. z (Failure)



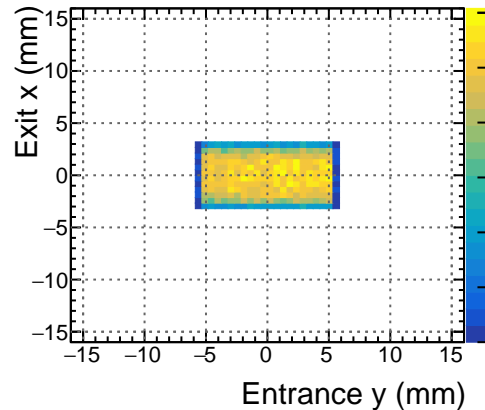
bm5 40 mm Detection y vs. x (Success)



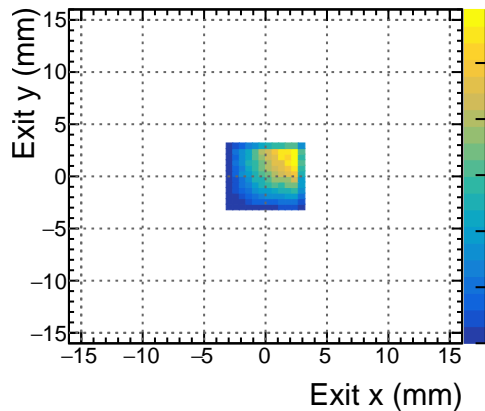
bm5 40 mm Exit x vs. Entrance x (Success)



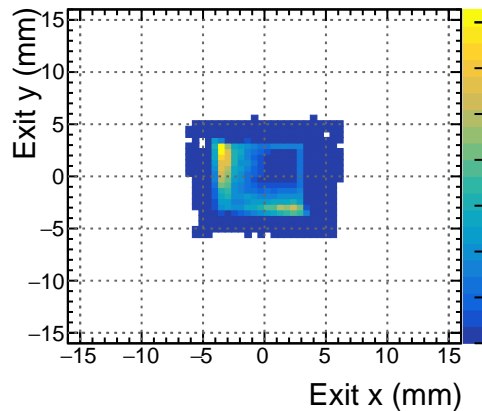
bm5 40 mm Exit x vs. Entrance y (Success)



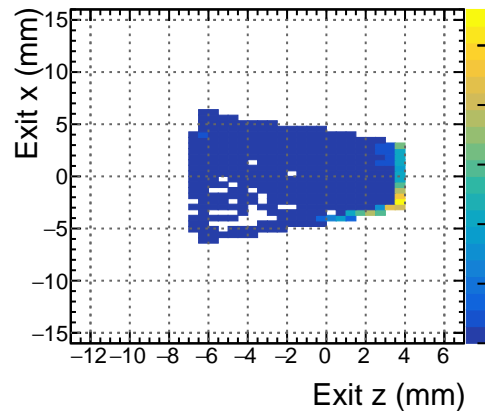
bm5 10 mm Exit y vs. x (Success)



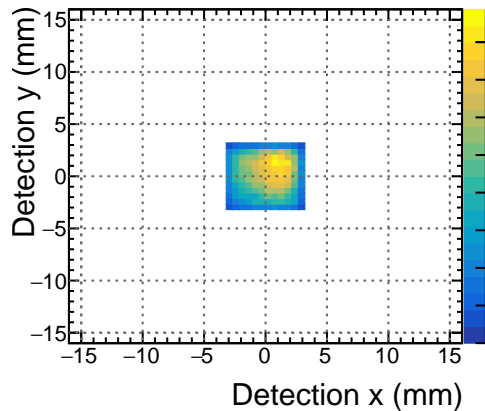
bm5 10 mm Exit y vs. x (Failure)



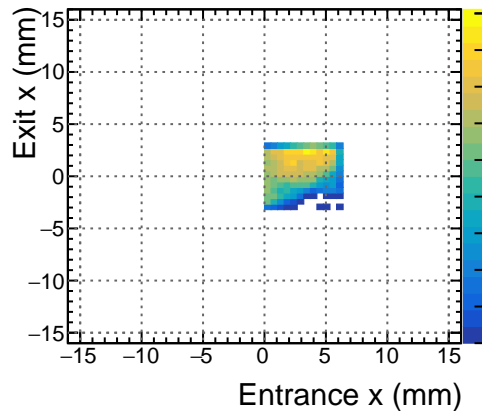
bm5 10 mm Exit x vs. z (Failure)



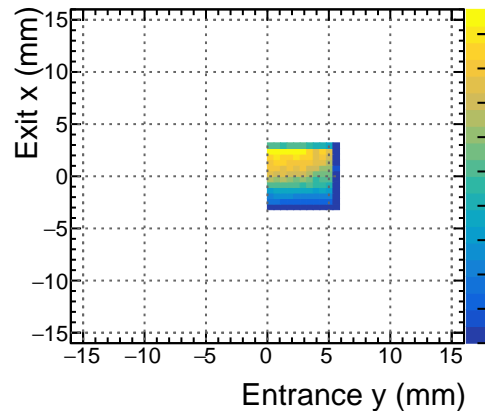
bm5 10 mm Detection y vs. x (Success)



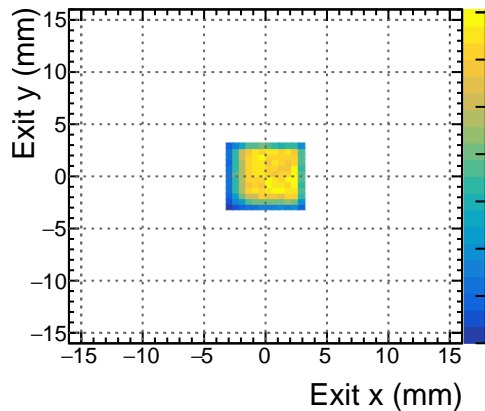
bm5 10 mm Exit x vs. Entrance x (Success)



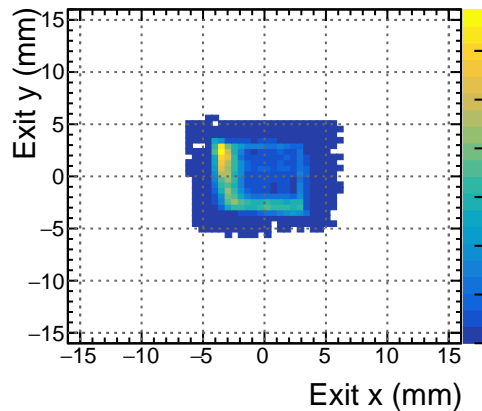
bm5 10 mm Exit x vs. Entrance y (Success)



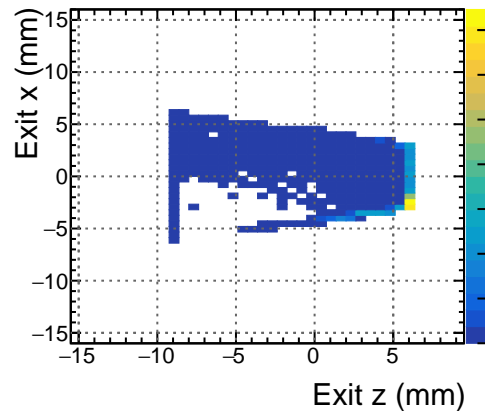
bm5 15 mm Exit y vs. x (Success)



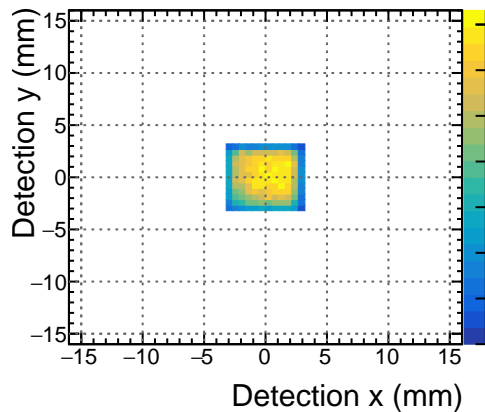
bm5 15 mm Exit y vs. x (Failure)



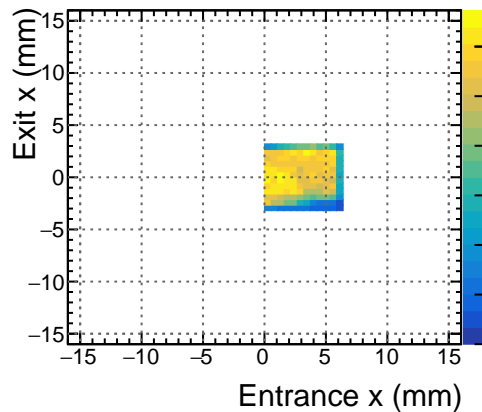
bm5 15 mm Exit x vs. z (Failure)



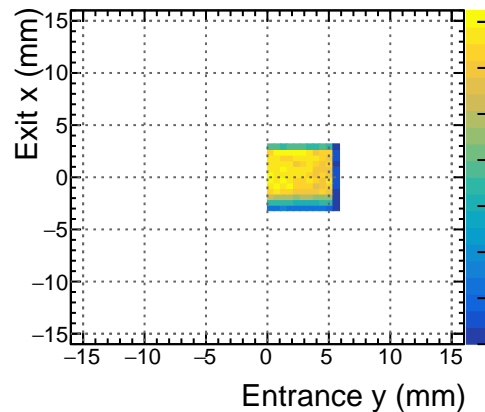
bm5 15 mm Detection y vs. x (Success)



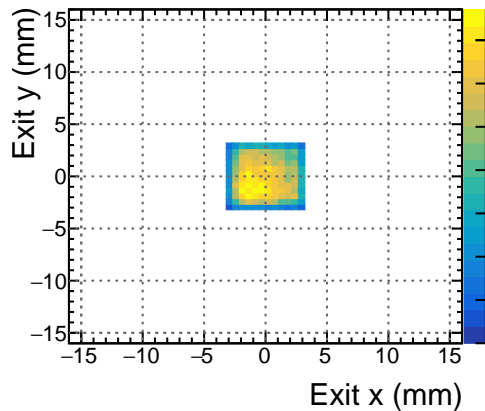
bm5 15 mm Exit x vs. Entrance x (Success)



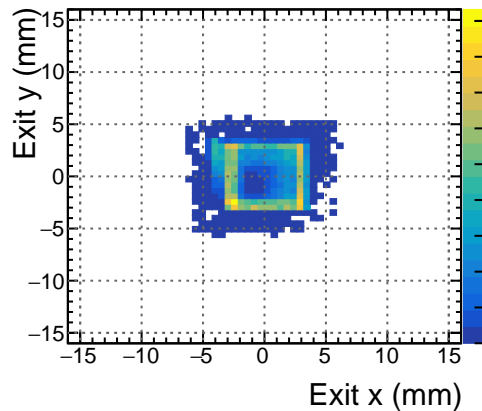
bm5 15 mm Exit x vs. Entrance y (Success)



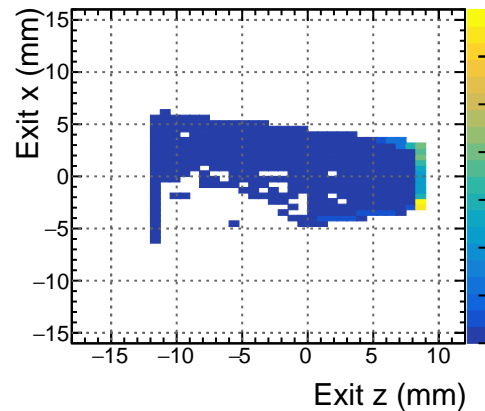
bm5 20 mm Exit y vs. x (Success)



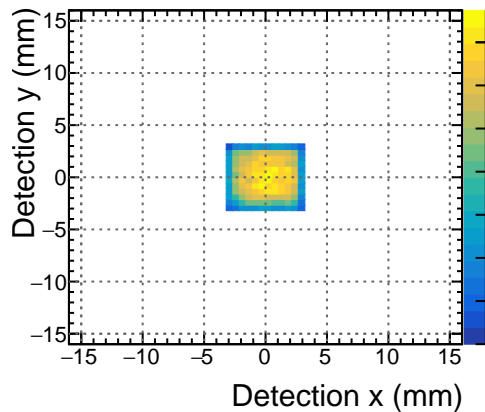
bm5 20 mm Exit y vs. x (Failure)



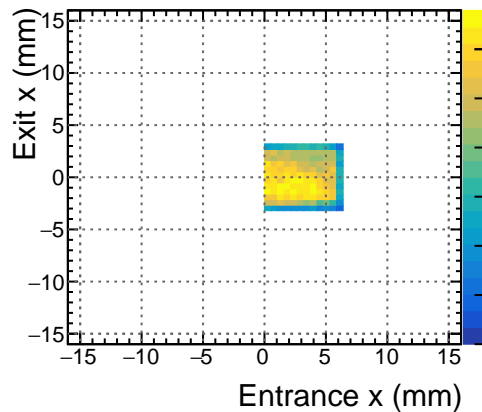
bm5 20 mm Exit x vs. z (Failure)



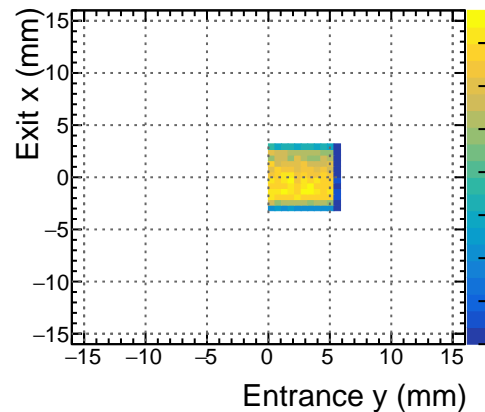
bm5 20 mm Detection y vs. x (Success)



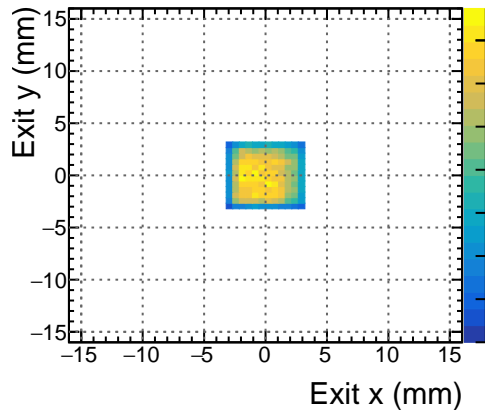
bm5 20 mm Exit x vs. Entrance x (Success)



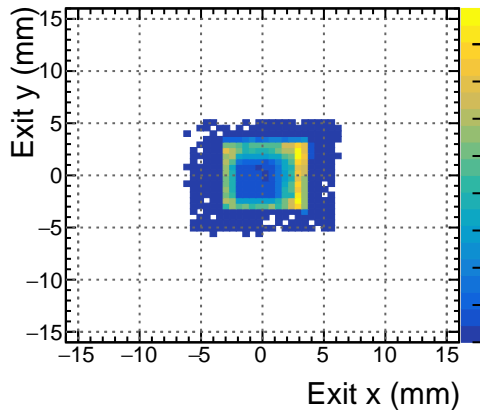
bm5 20 mm Exit x vs. Entrance y (Success)



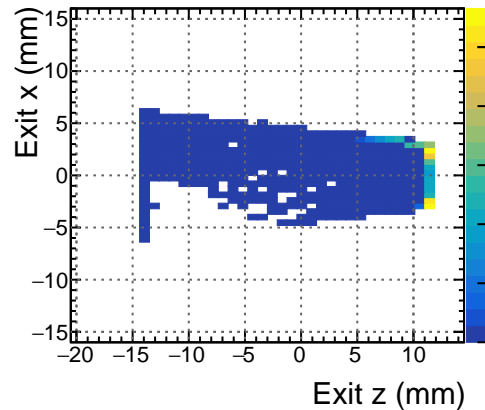
bm5 25 mm Exit y vs. x (Success)



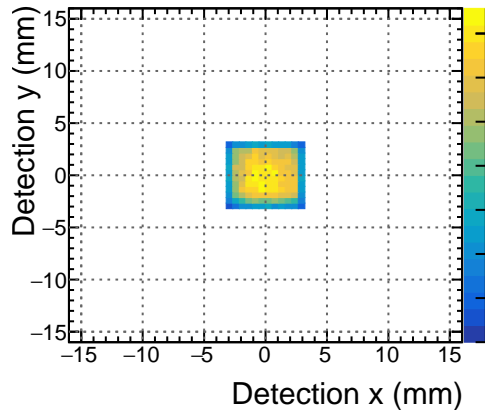
bm5 25 mm Exit y vs. x (Failure)



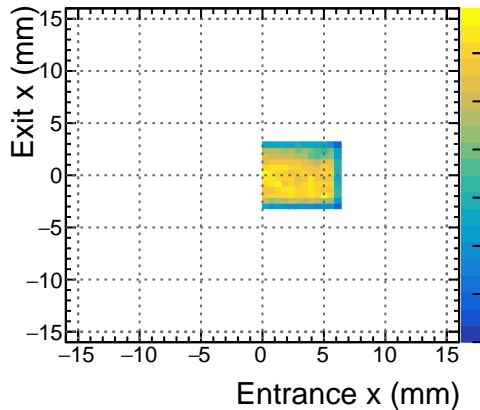
bm5 25 mm Exit x vs. z (Failure)



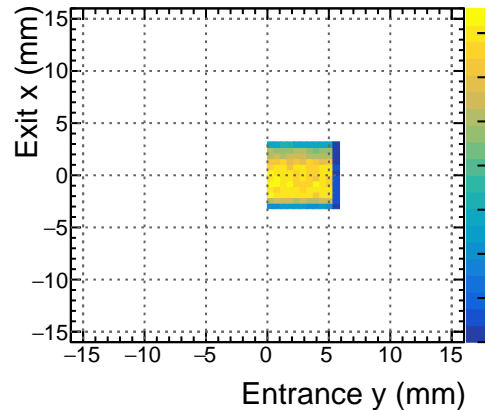
bm5 25 mm Detection y vs. x (Success)



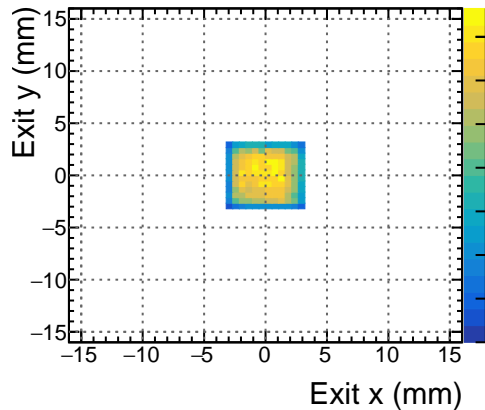
bm5 25 mm Exit x vs. Entrance x (Success)



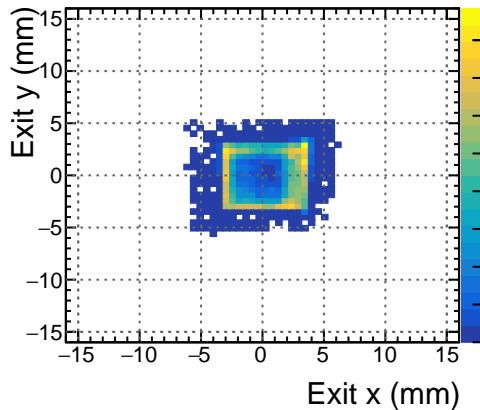
bm5 25 mm Exit x vs. Entrance y (Success)



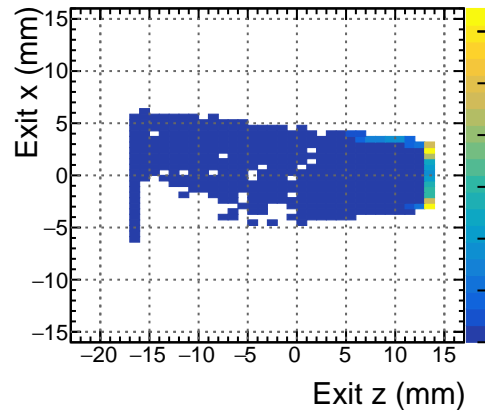
bm5 30 mm Exit y vs. x (Success)



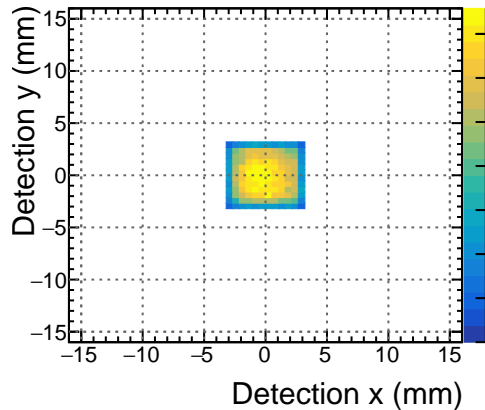
bm5 30 mm Exit y vs. x (Failure)



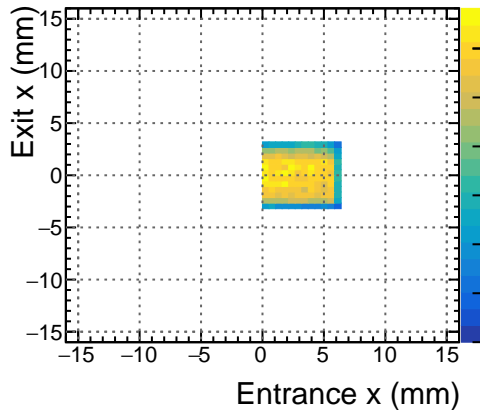
bm5 30 mm Exit x vs. z (Failure)



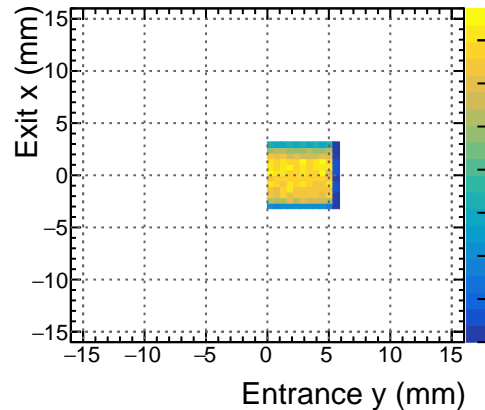
bm5 30 mm Detection y vs. x (Success)



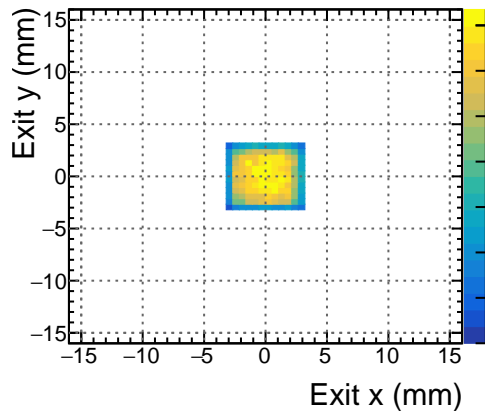
bm5 30 mm Exit x vs. Entrance x (Success)



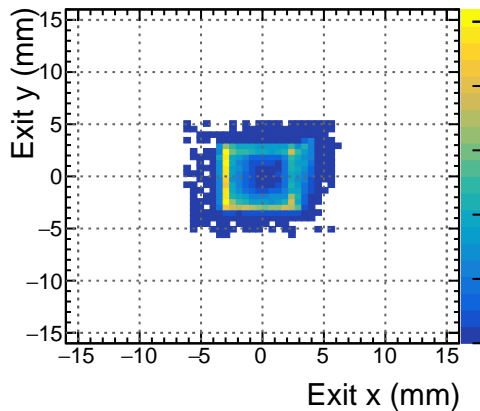
bm5 30 mm Exit x vs. Entrance y (Success)



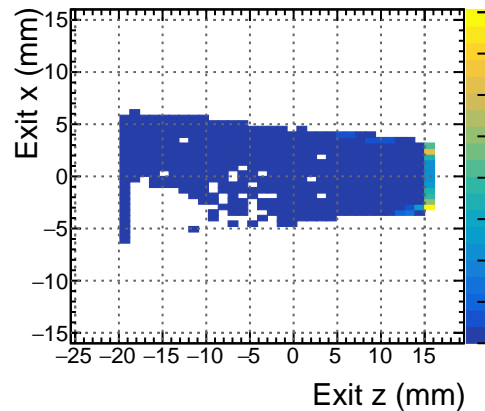
bm5 35 mm Exit y vs. x (Success)



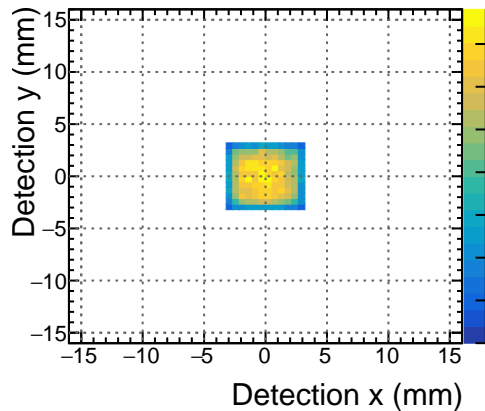
bm5 35 mm Exit y vs. x (Failure)



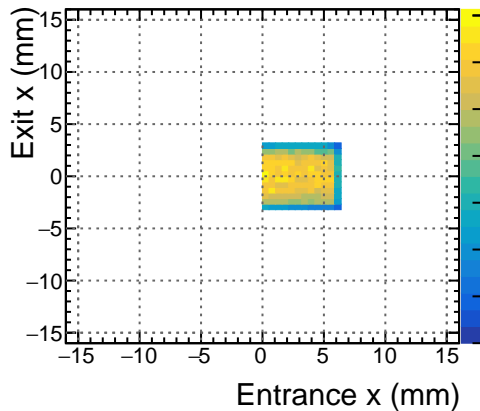
bm5 35 mm Exit x vs. z (Failure)



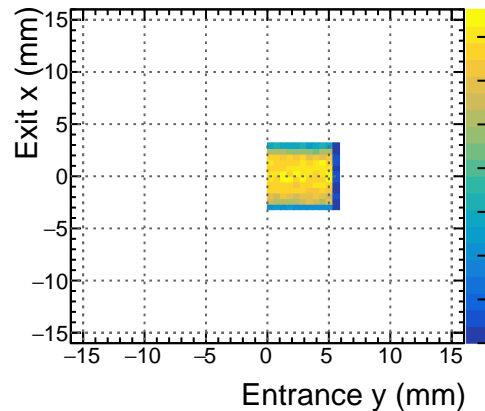
bm5 35 mm Detection y vs. x (Success)



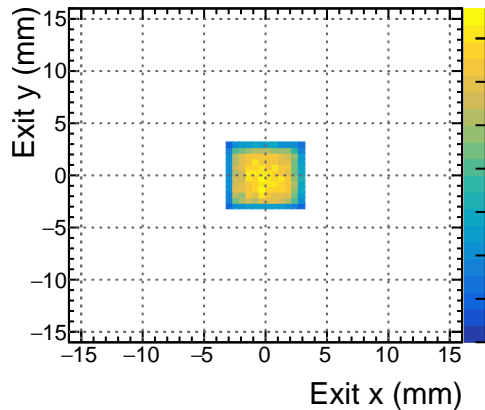
bm5 35 mm Exit x vs. Entrance x (Success)



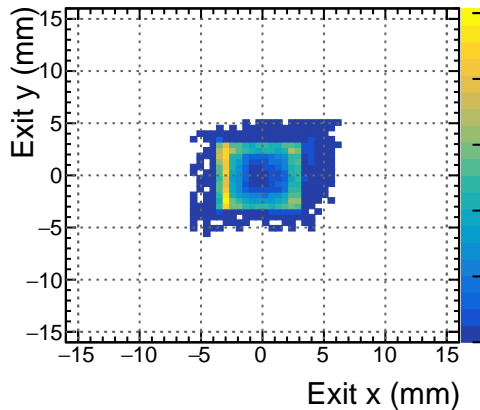
bm5 35 mm Exit x vs. Entrance y (Success)



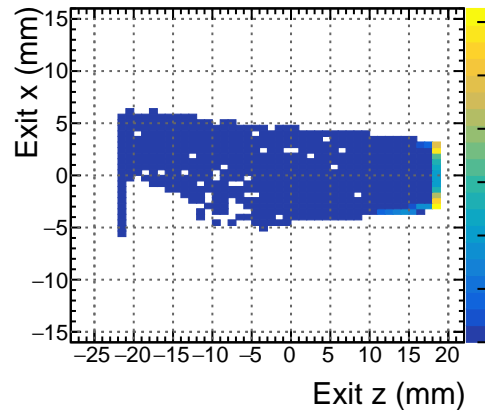
bm5 40 mm Exit y vs. x (Success)



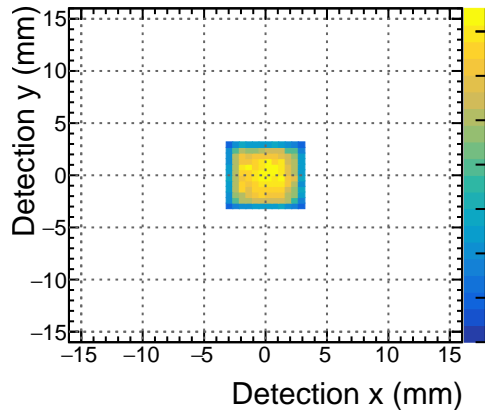
bm5 40 mm Exit y vs. x (Failure)



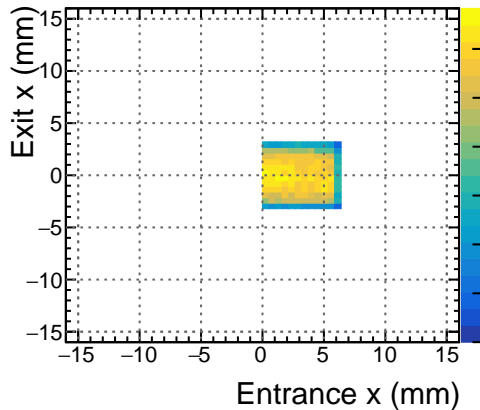
bm5 40 mm Exit x vs. z (Failure)



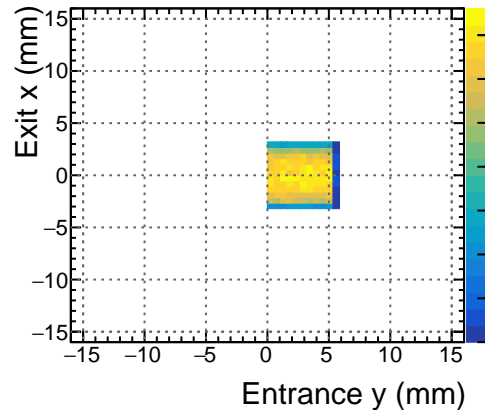
bm5 40 mm Detection y vs. x (Success)



bm5 40 mm Exit x vs. Entrance x (Success)



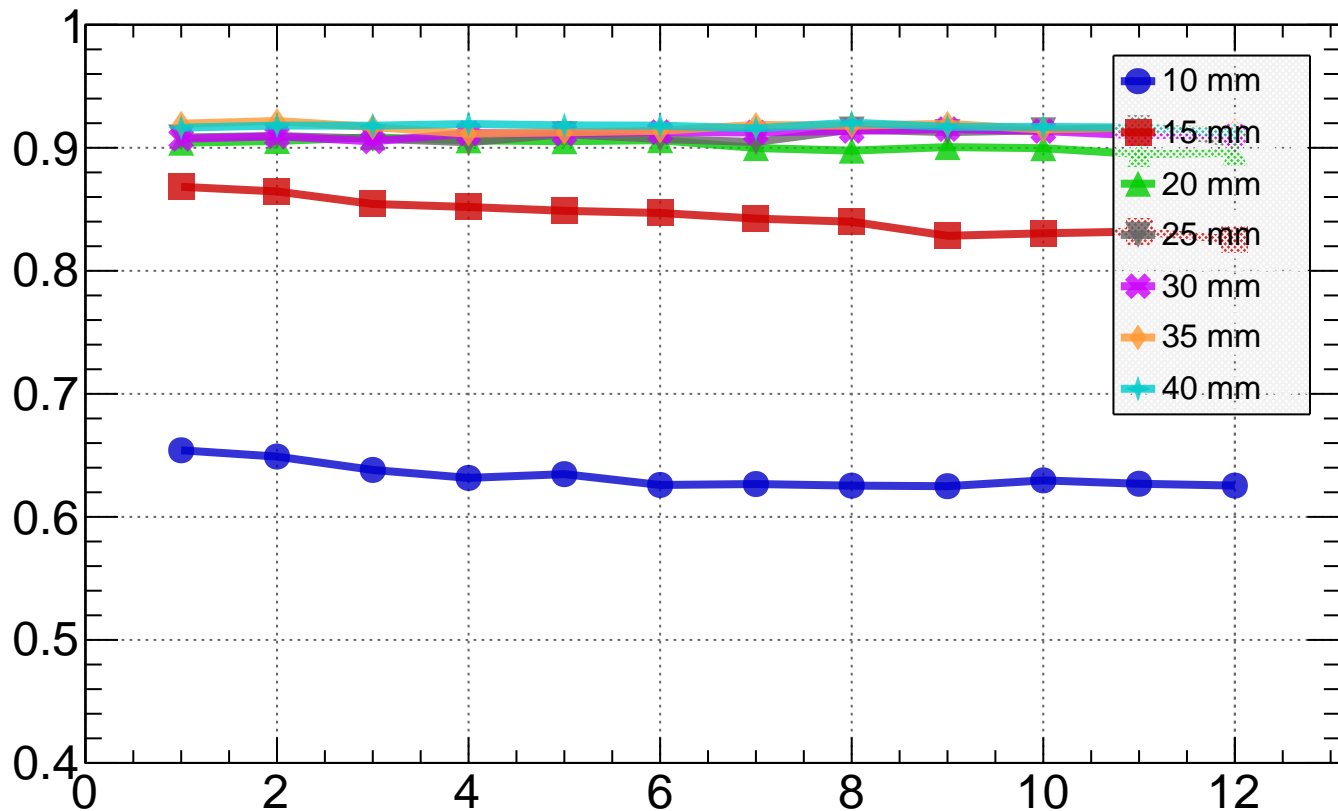
bm5 40 mm Exit x vs. Entrance y (Success)





BICmini air S13360-6025CS UNAAD vs. Layer

UNAAD



Light Guide Layer

BICmini cookie S13360-6025CS UNAAD vs. Layer

