



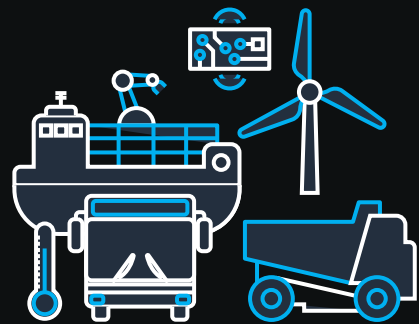
Digital Twin Framework: Deploying Digital Twins on the Cloud

September 17, 2024

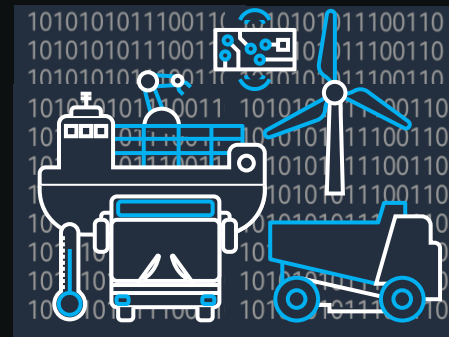
Adam Rasheed, Head of Emerging Technology
Stephen Litster, Head of HCLS Compute Specialists

Digital Twins

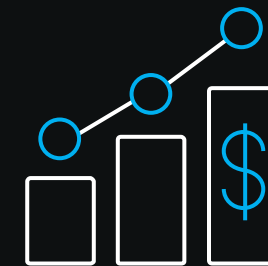
A living **digital representation** of a **physical system** that is **dynamically updated** to mimic the structure, state, and behavior of the physical system to drive **business outcomes**



PHYSICAL
SYSTEMS



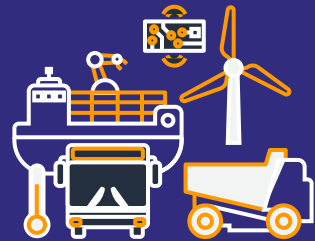
DIGITAL
TWINS



BUSINESS
OUTCOMES

Digital Twin Levels

<https://aws.amazon.com/blogs/iot/digital-twins-on-aws-unlocking-business-value-and-outcomes/>



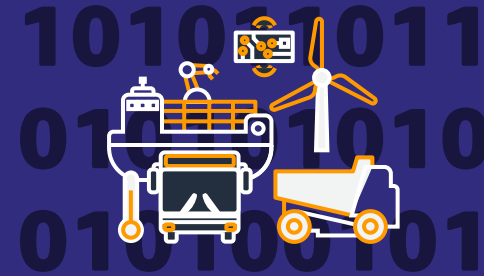
Engineering design and visual representation.

L1 DESCRIPTIVE



Integration of IoT, asset history, and maintenance data.

L2 INFORMATIVE



Predictions of unmeasured quantities and future states based on historical data.

L3 PREDICTIVE



Updatable models to drive actionable insights.

L4 LIVING DIGITAL TWIN

DT Levels framework adapted from: Verdantix, Five Digital Twin Strategies For Industrial Facilities, 2019.

Digital Twin Framework

<https://aws.amazon.com/solutions/guidance/digital-twin-framework-on-aws/>



A unified architecture which spans data collection & contextualization, spatial data lakes, & predictive modeling for digital twin applications

