

Status report for HRPPD #26

Arshak Asaturyan (JLab)



eRD110 meeting,
June 26, 2024



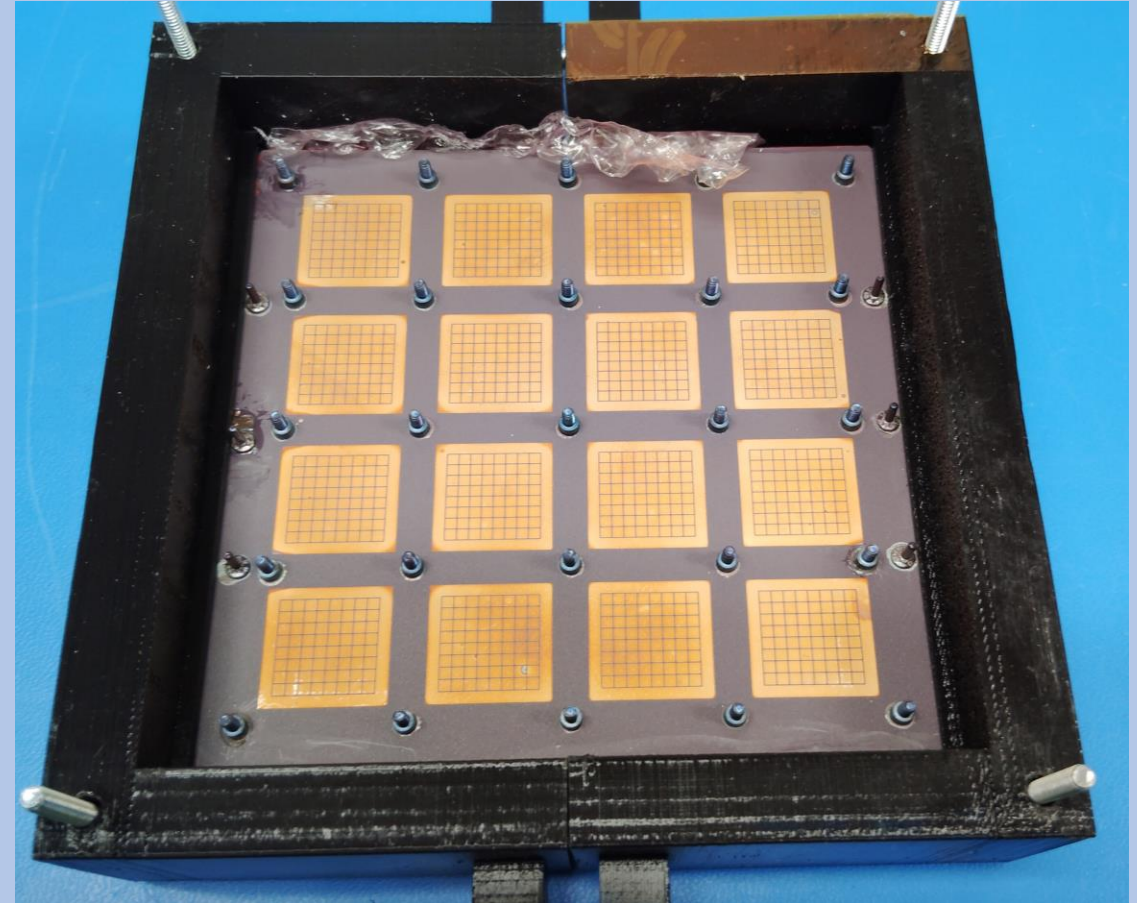
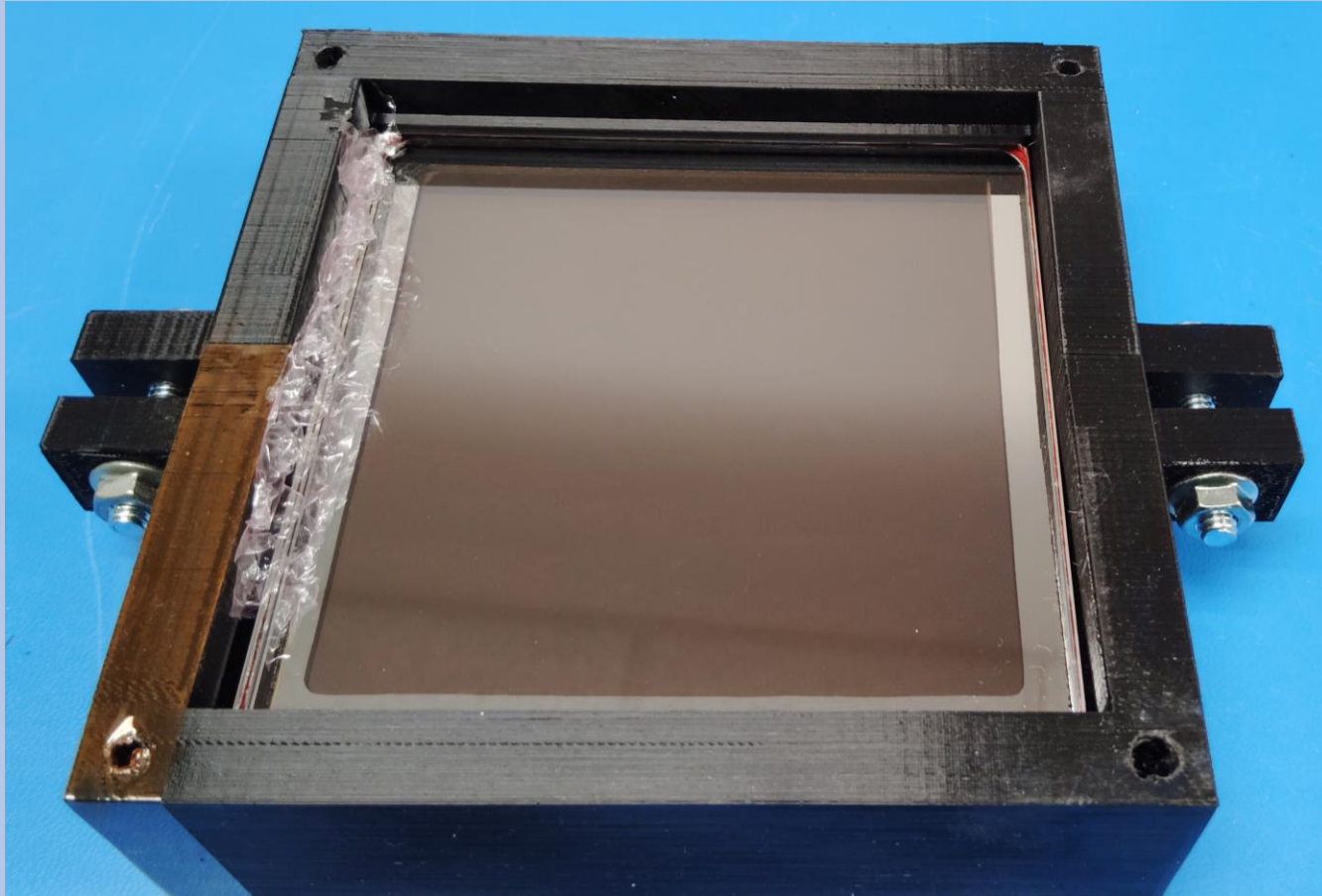
HRPPD-26 received at JLab



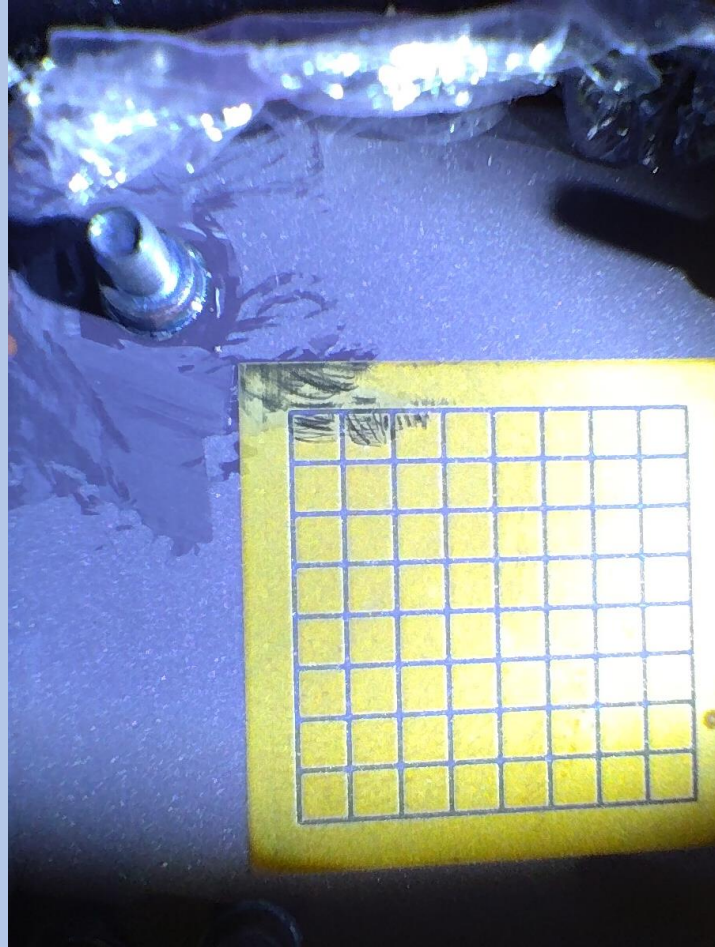
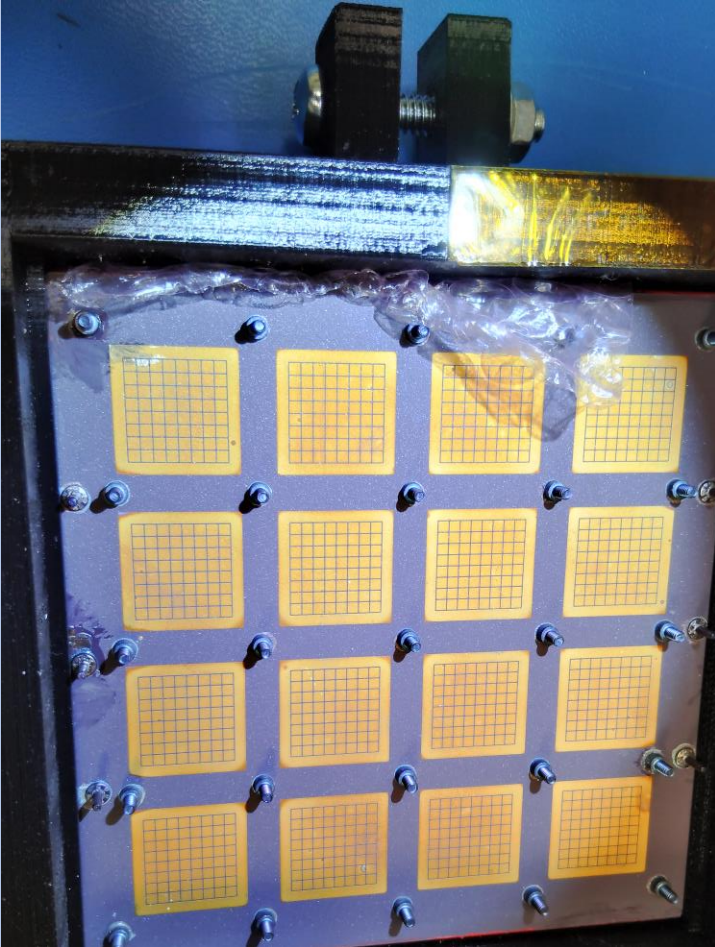
HRPPD-25 case with shock sensor

There is no shock sensors attached to the case

Visual Inspection

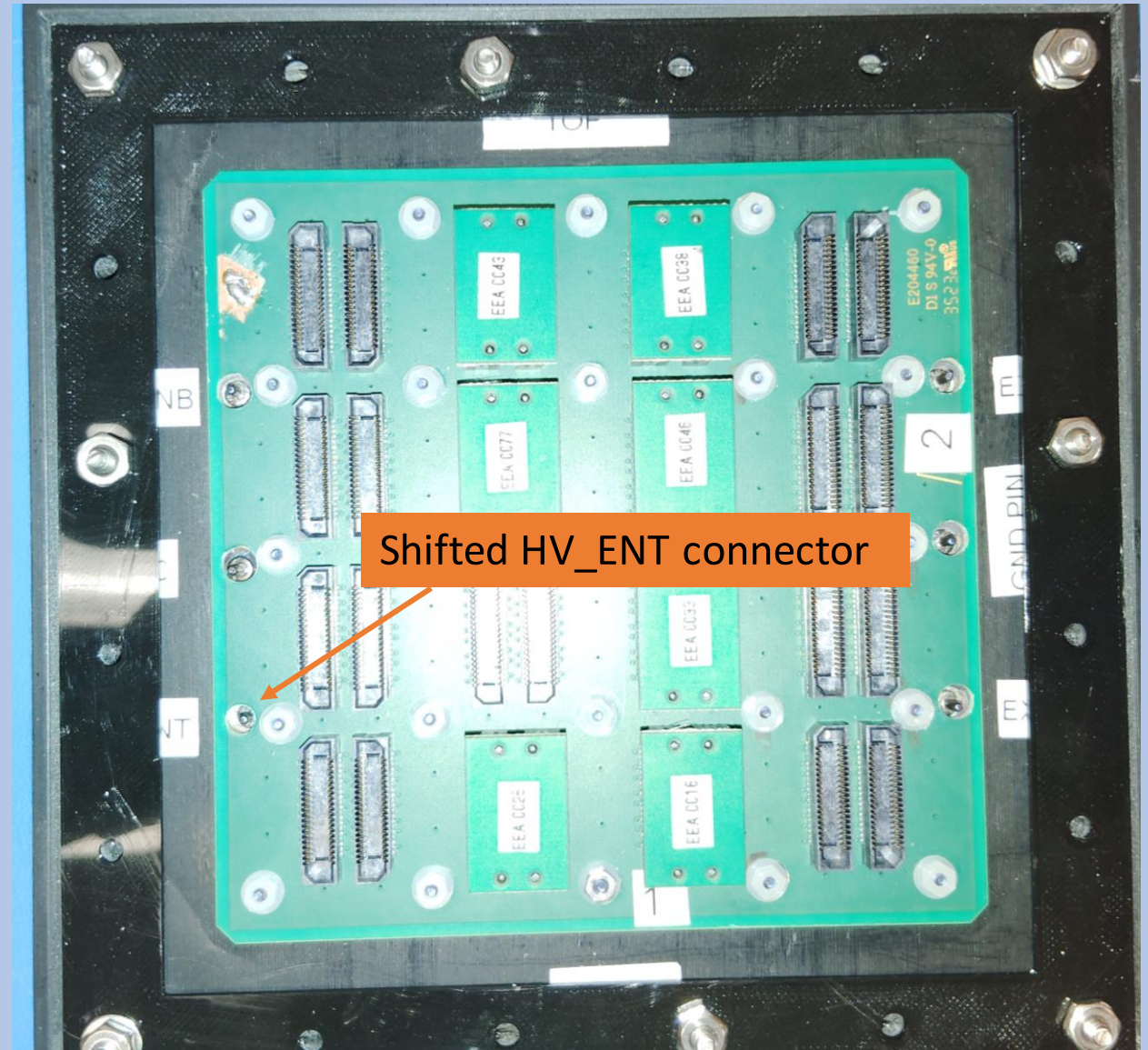


Visual Inspection-2



- There are couple of holder/pressure screws that seem to me were re-glued
- The connectors were not polished, and some of them have signs of scratches and "glue?" or silicone? leftovers on them

- One HV_ENT connector is shifted from its regular spot,
- Need to modify the PCB_board's corresponding hole,
- but still the HV pin is too close to the wall of the PCB, and there is almost NO space to widen that hole



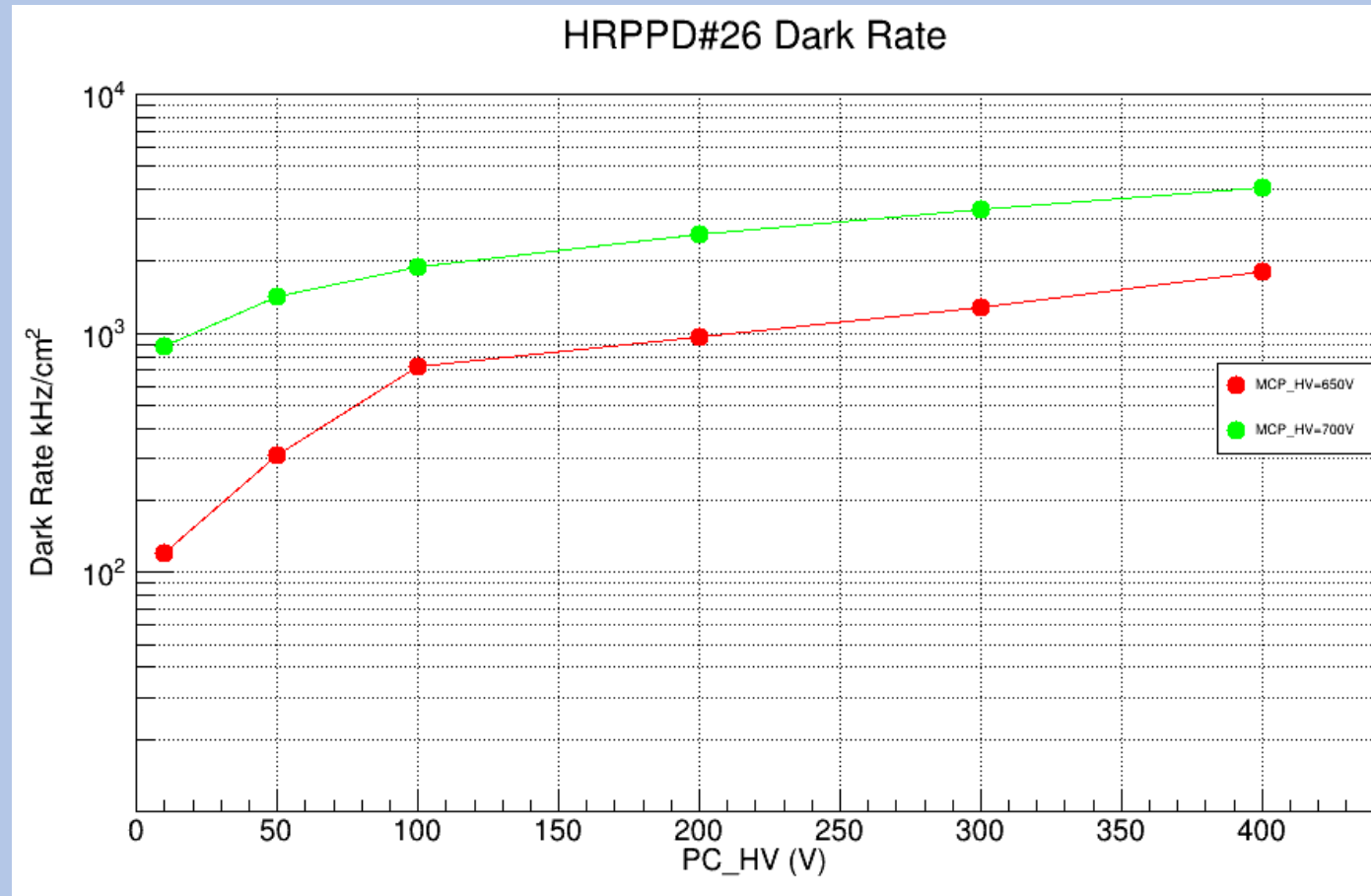
Initial test results

TTV(Transit Time Variation)



This test was done at 700V on MCPs, and 300V delta on Photocathode
The TTV=74.00 picoseconds

Dark Rate measurement



- Dark rates were measured at -650V and -700V on MCP
- 10V, 50V, 100-400V on PC