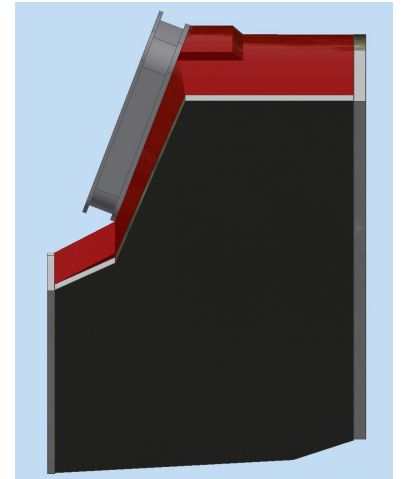
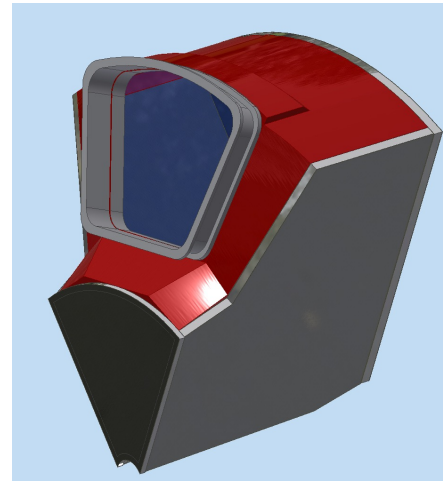
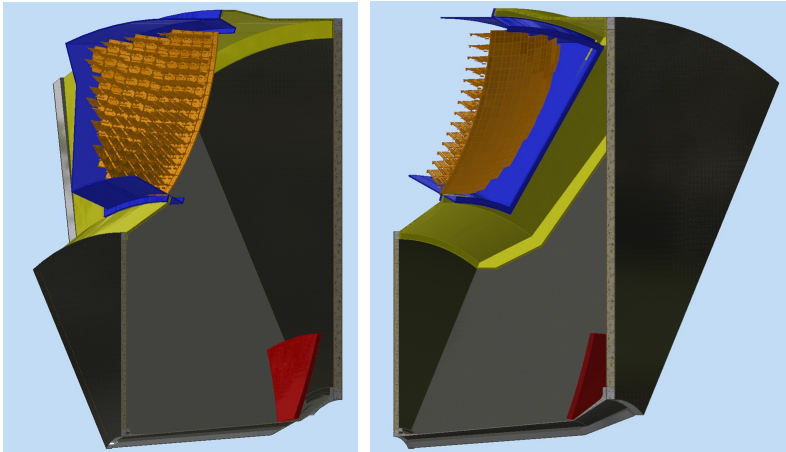


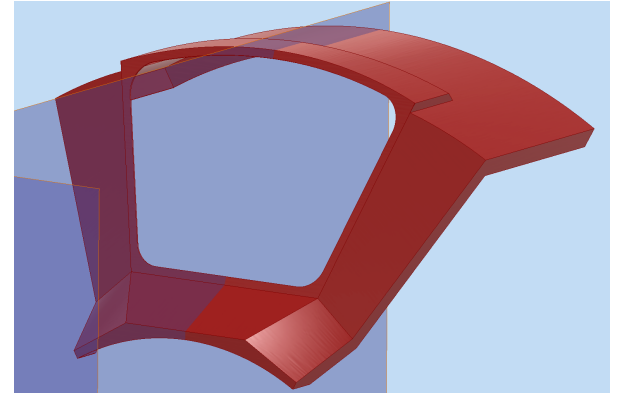
A lot of valuable data collected in May with the existing prototype and a complete SiPM plane

R&D program:

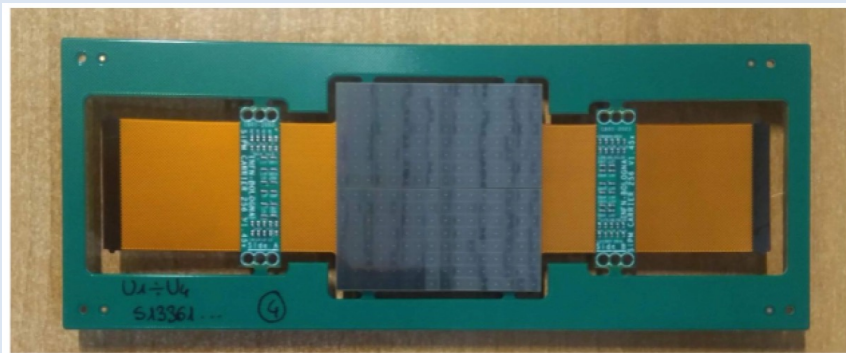
- ✓ 2024: Real scale prototype
- ✓ 2025: Inner structure & support
- ✓ 2025: Detector box & services



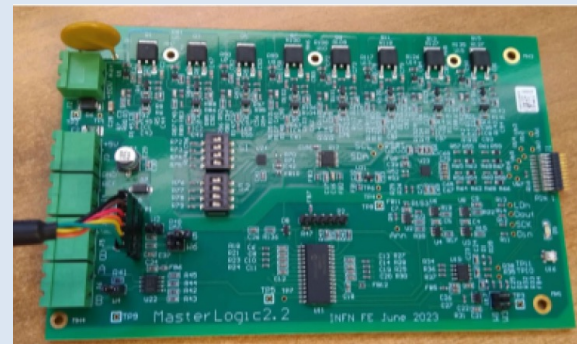
Custom shell
&
Standard CFRP
laminate foils



SiPM **carrier board** with 256 channels and flex connector circuits.

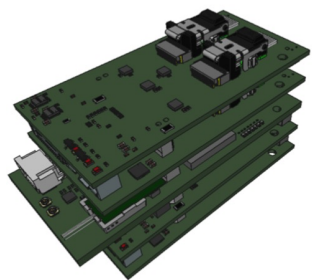


MasterLogic card to control SiPM bias voltage & monitoring service



Readout Board to configure and connect to the back-end

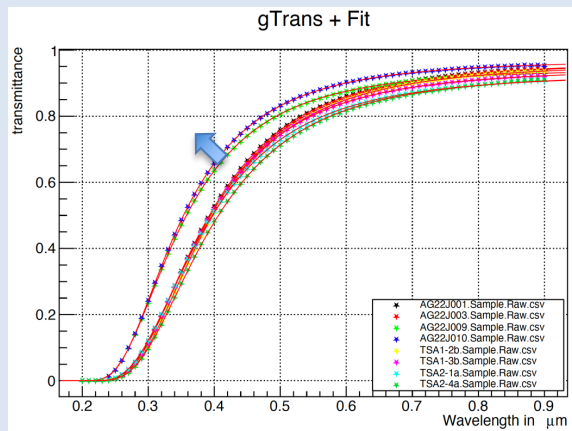
RDO stack
with fake FEBS



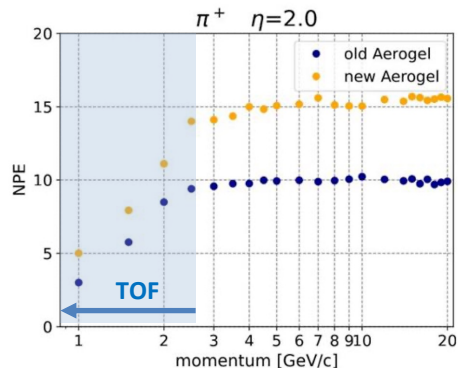
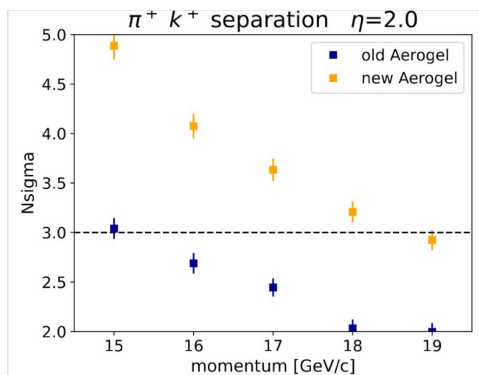
R&D program:

- ✓ 2024: RDO prototype
- ✓ 2025: Carrier v3
- ✓ 2025: RDO
- ✓ 2025: Master Panel

Aerogel characterization & optimization (synergy with ALICE3)



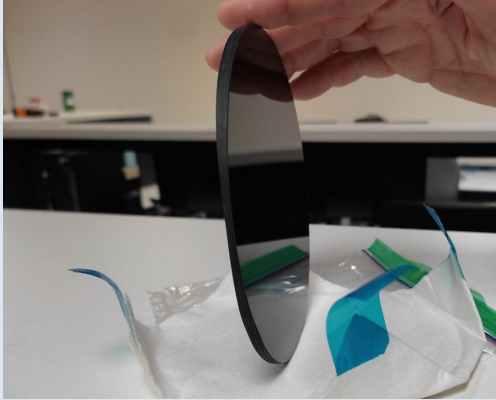
ePIC simulations



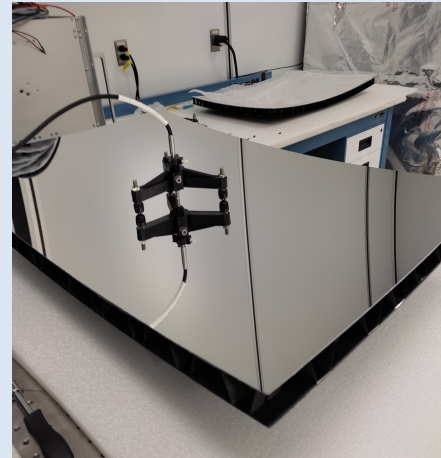
R&D program:

- ✓ 2024: Validate $n > 1.025$
- ✓ 2024: Increase size (15-18 cm) or thickness (2-3 cm)
- ✓ 2025: define size (up to 20 cm) & production specs QA station

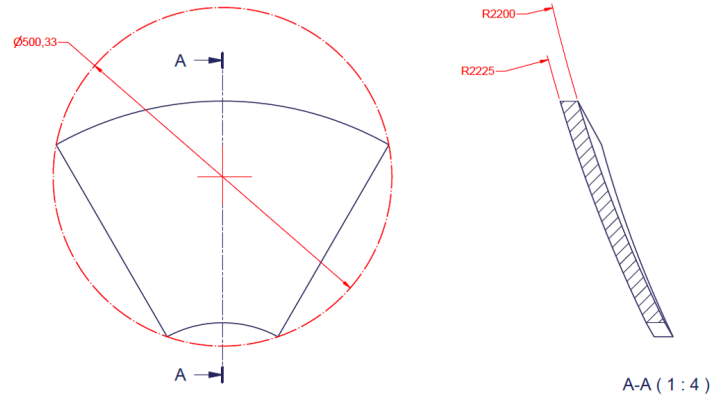
Mirror production and characterization



Small demo



Surface Quality



Mid-size demo

R&D program:

- ✓ 2024: Coating tests on small samples
- ✓ 2024: Small demo (bulk CFRP) for existing proto
- ✓ 2025: Mid-size demo (ePIC sandwich) for real-scale proto QA Station

A lot of valuable data collected in May with the existing prototype and a complete SiPM plane

CERN call for request is typically in November: there is time but we need to plan well in advance to have the equipment ready

May-June '25

Real-scale

(Almost) in line with P6 and eRD102 for a final readiness milestone in July '25 (originally in March '25)

October '25

RDO ?