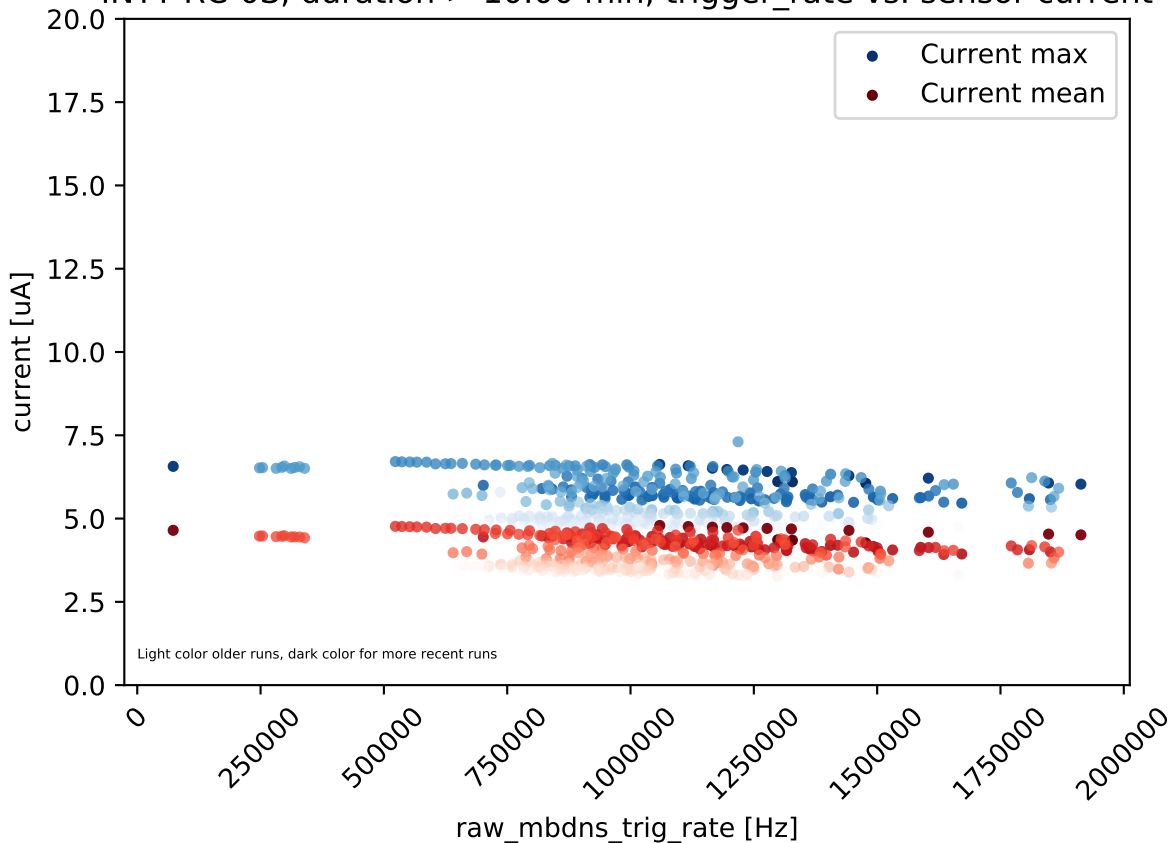
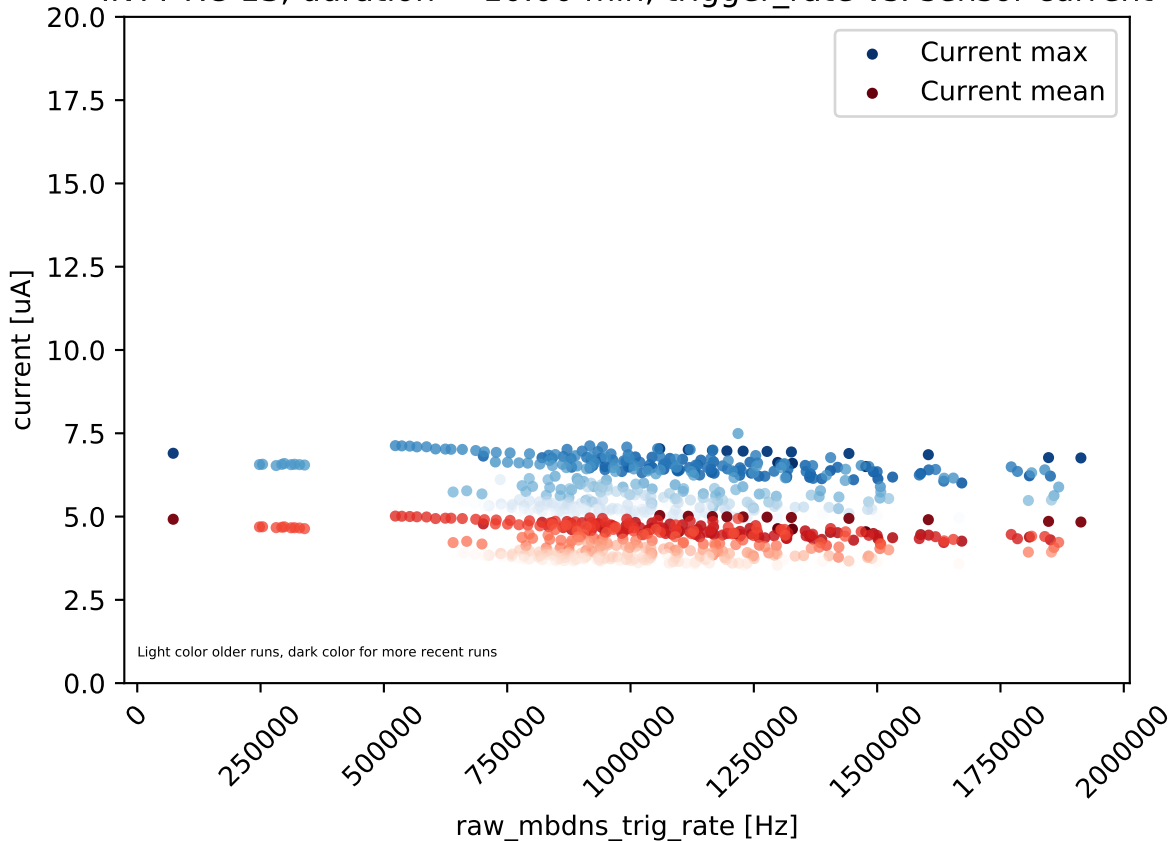


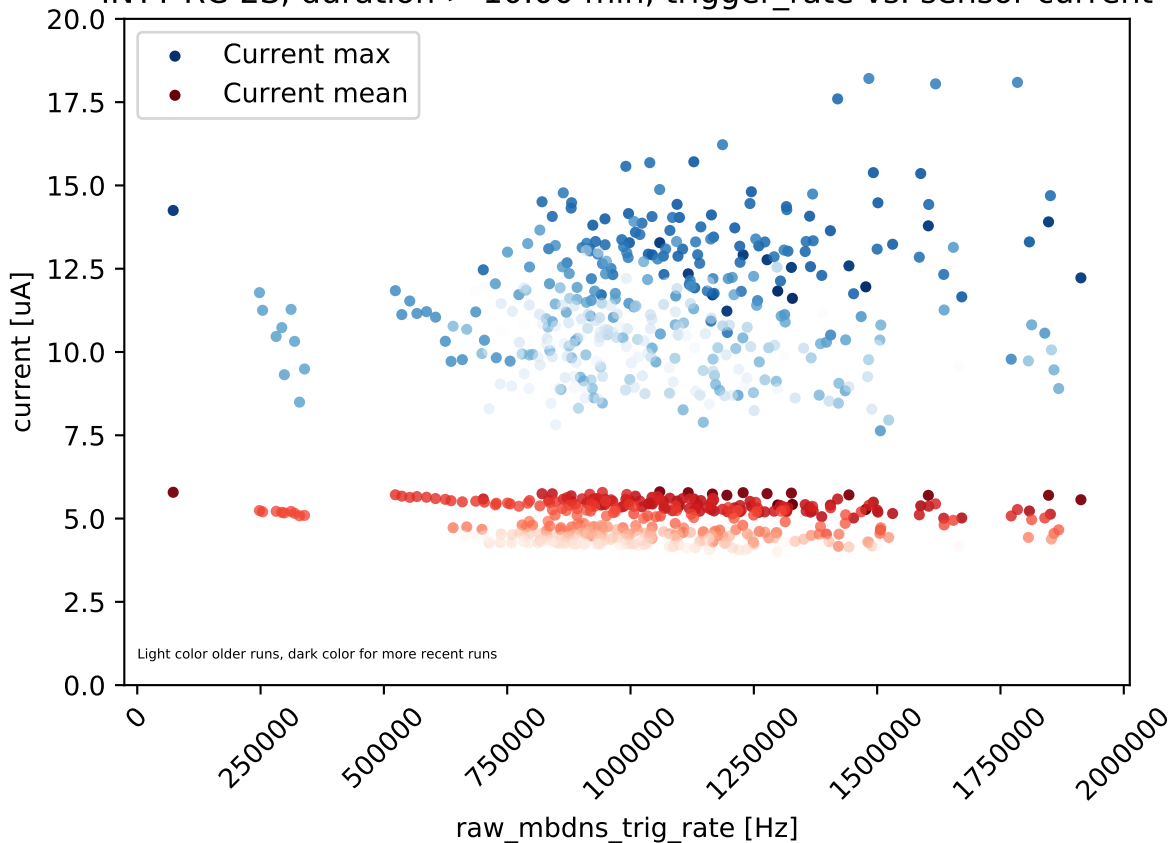
INTT RC-0S, duration > 10.00 min, trigger_rate vs. sensor current



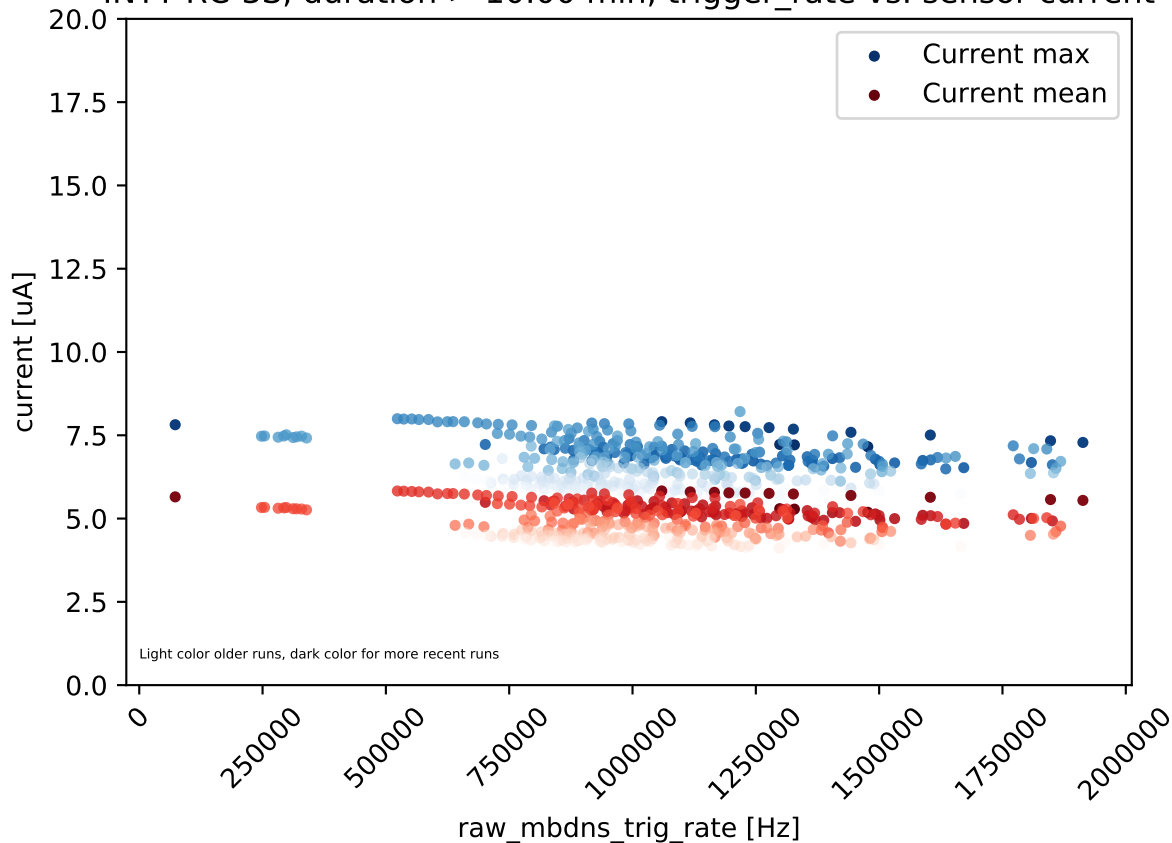
INTT RC-1S, duration > 10.00 min, trigger_rate vs. sensor current



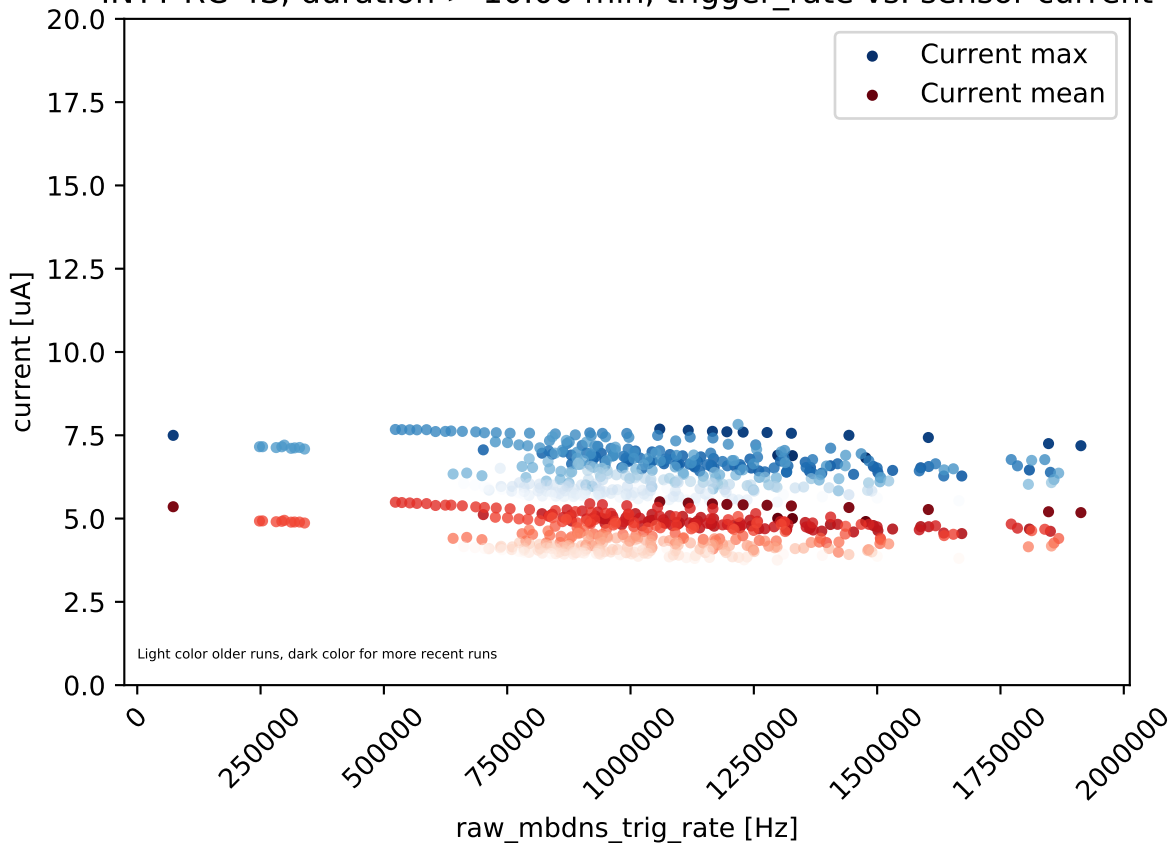
INTT RC-2S, duration > 10.00 min, trigger_rate vs. sensor current



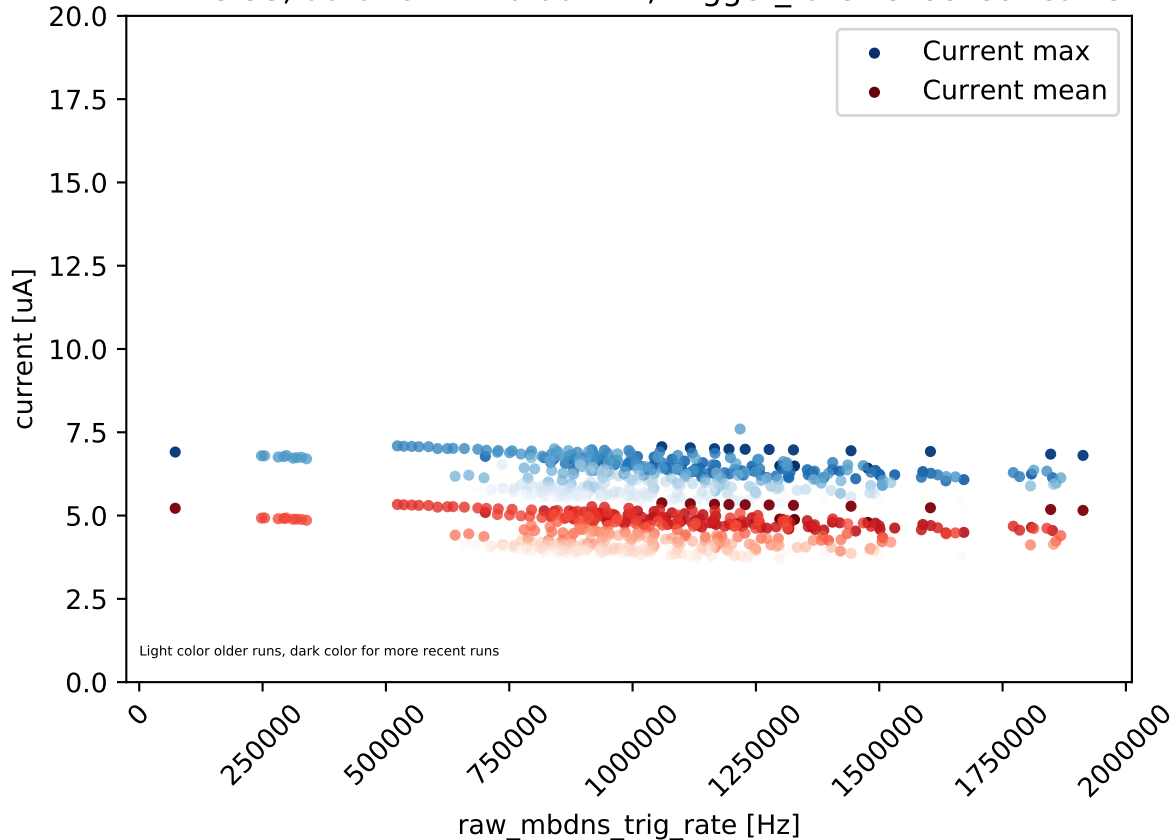
INTT RC-3S, duration > 10.00 min, trigger_rate vs. sensor current



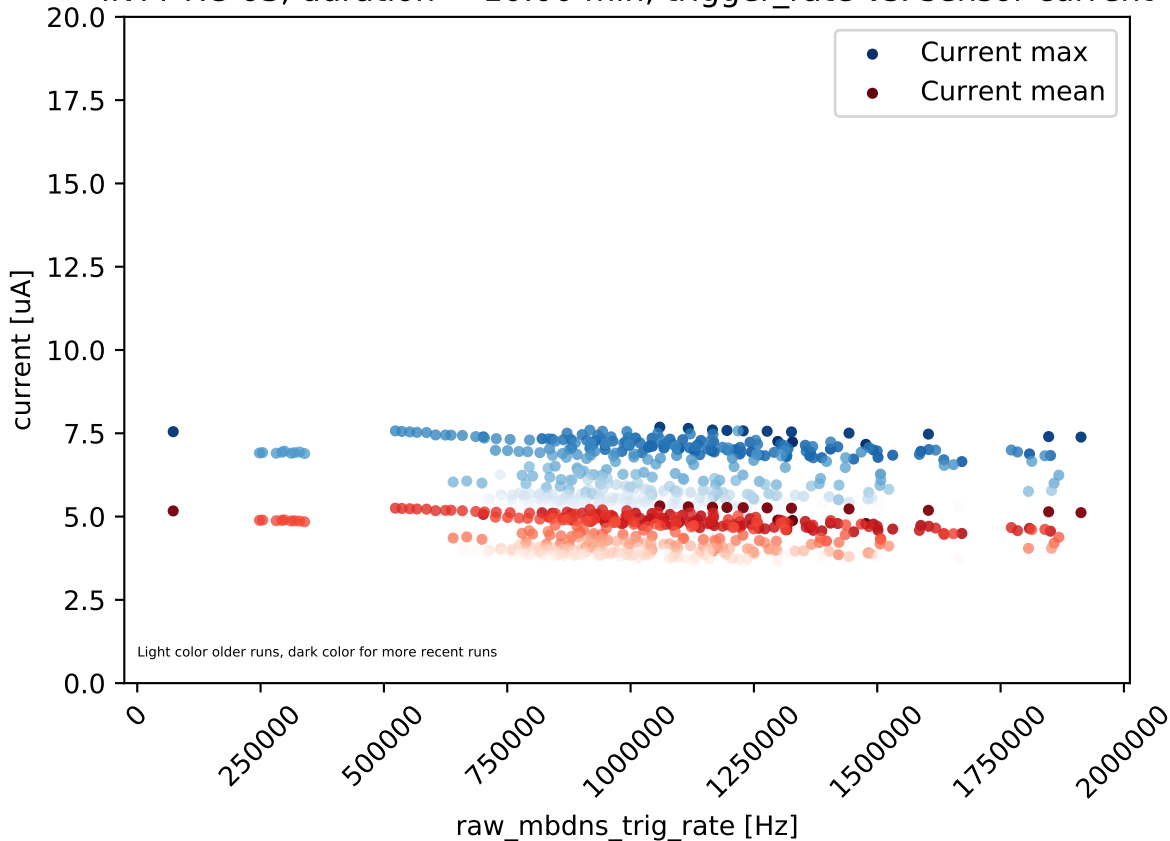
INTT RC-4S, duration > 10.00 min, trigger_rate vs. sensor current



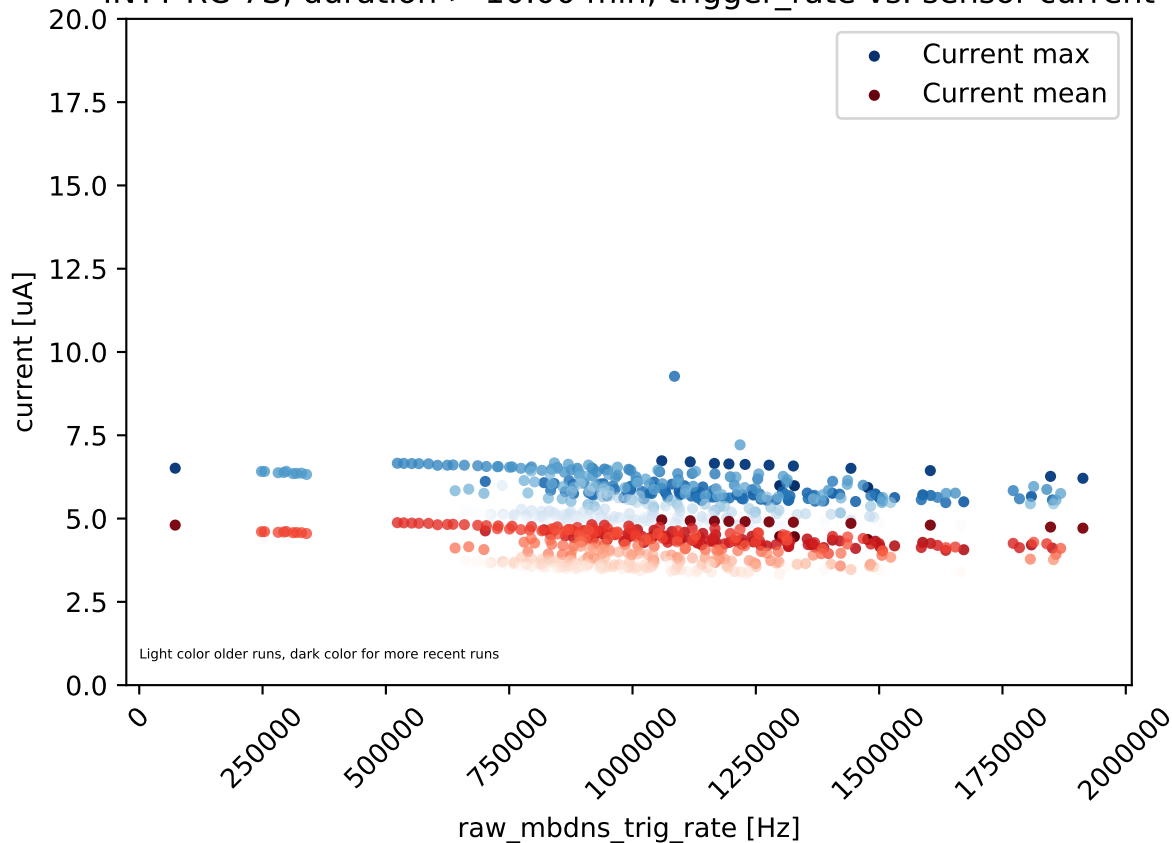
INTT RC-5S, duration > 10.00 min, trigger_rate vs. sensor current



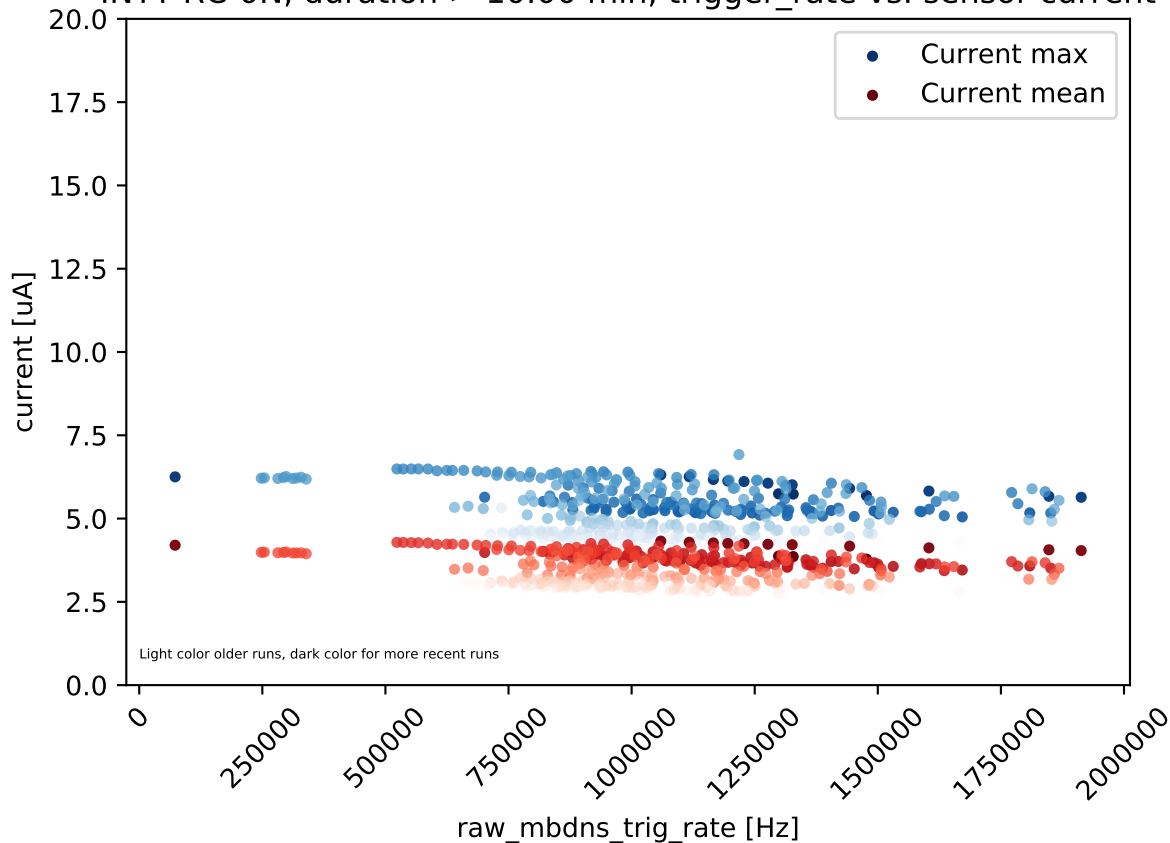
INTT RC-6S, duration > 10.00 min, trigger_rate vs. sensor current



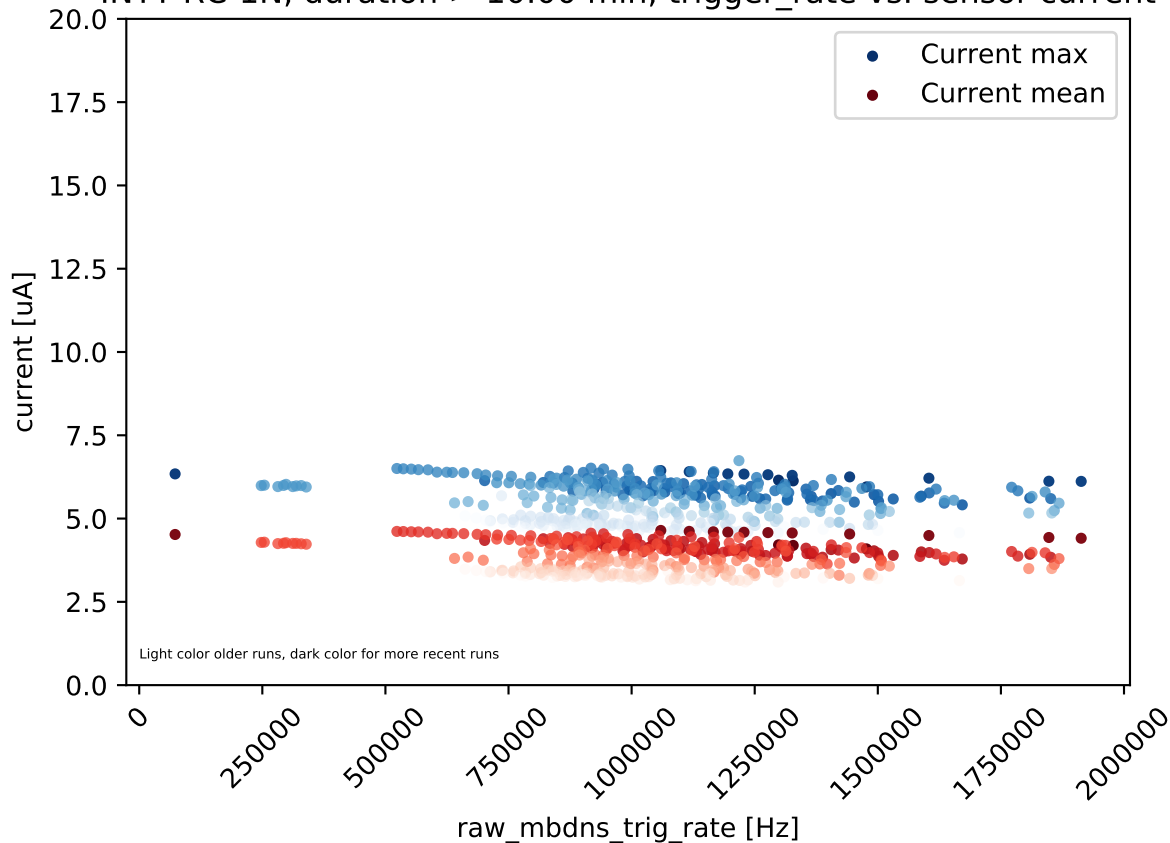
INTT RC-7S, duration > 10.00 min, trigger_rate vs. sensor current



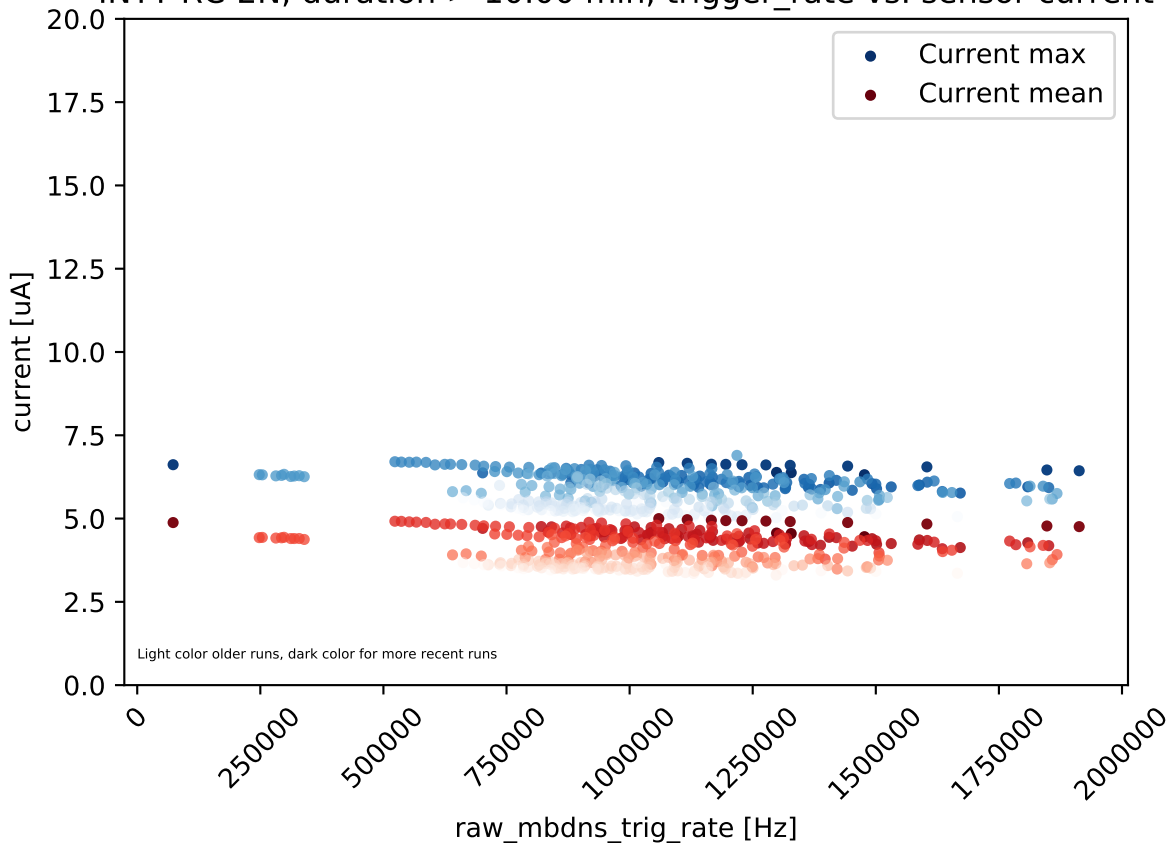
INTT RC-0N, duration > 10.00 min, trigger_rate vs. sensor current



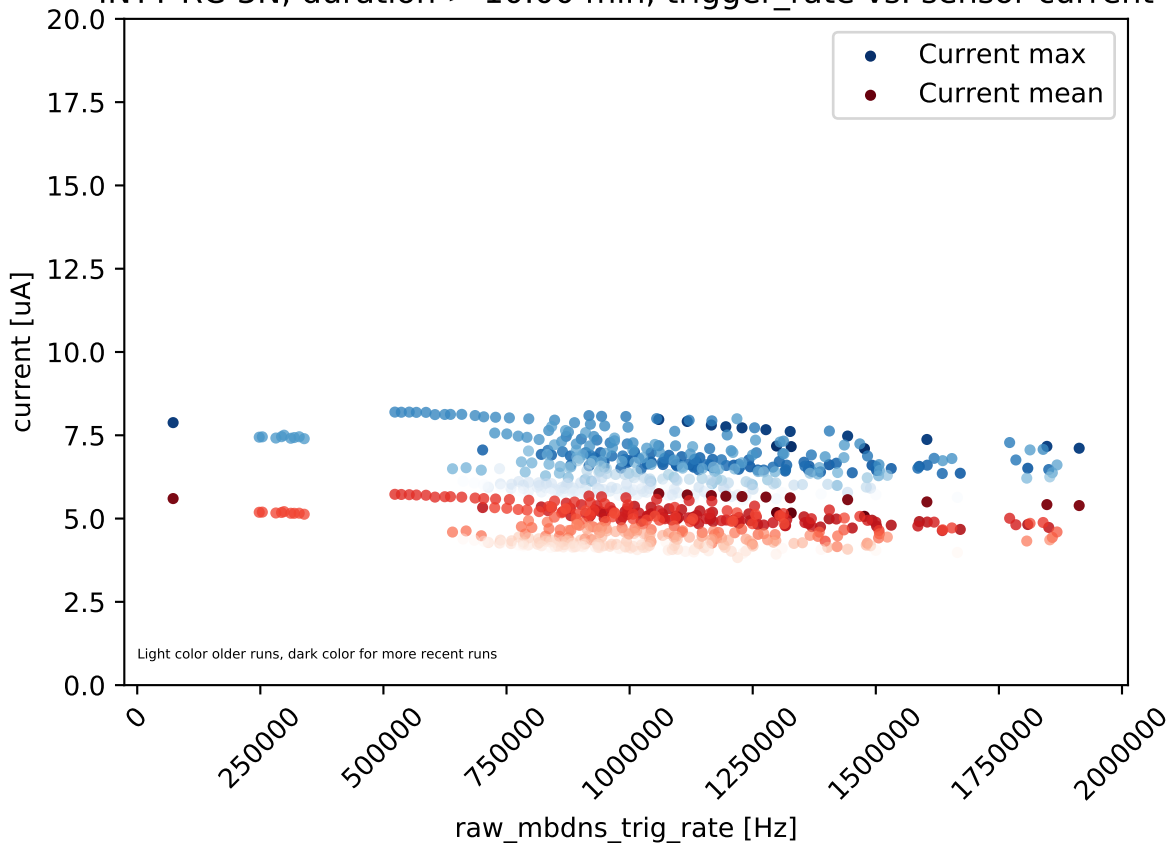
INTT RC-1N, duration > 10.00 min, trigger_rate vs. sensor current



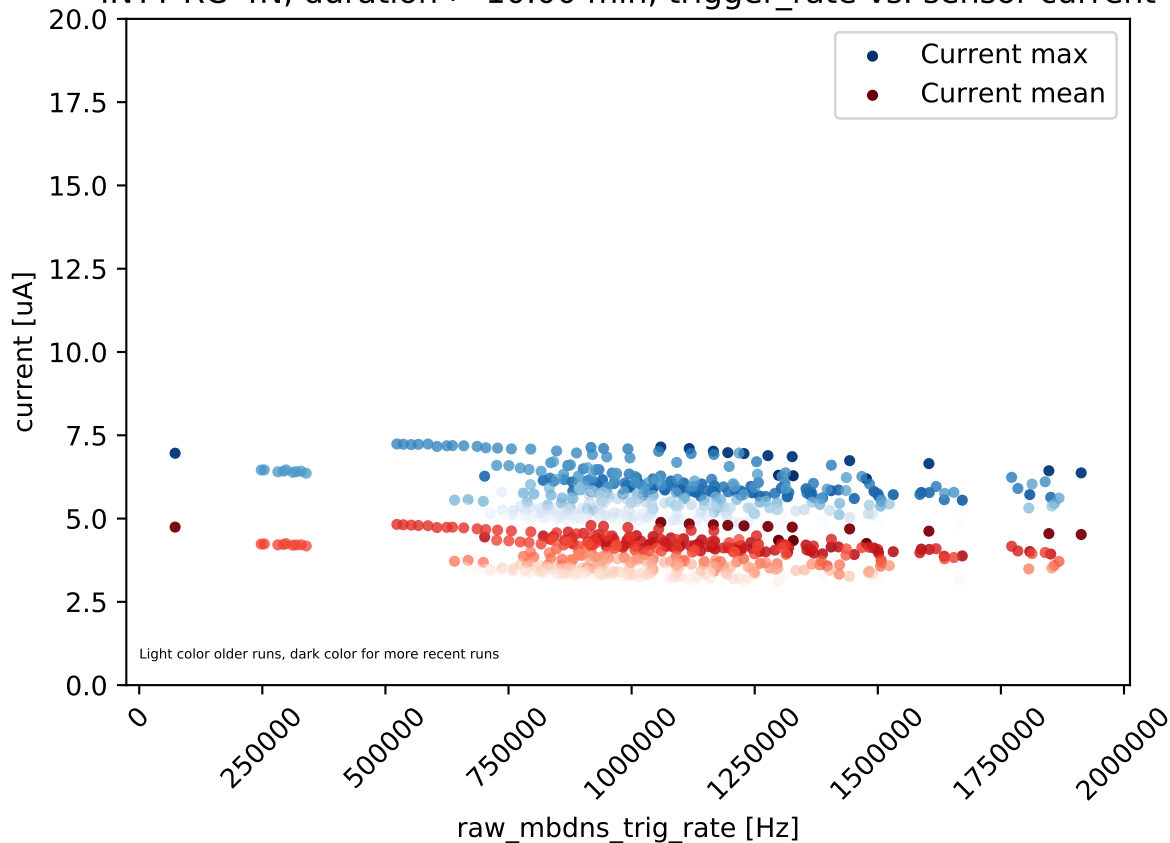
INTT RC-2N, duration > 10.00 min, trigger_rate vs. sensor current



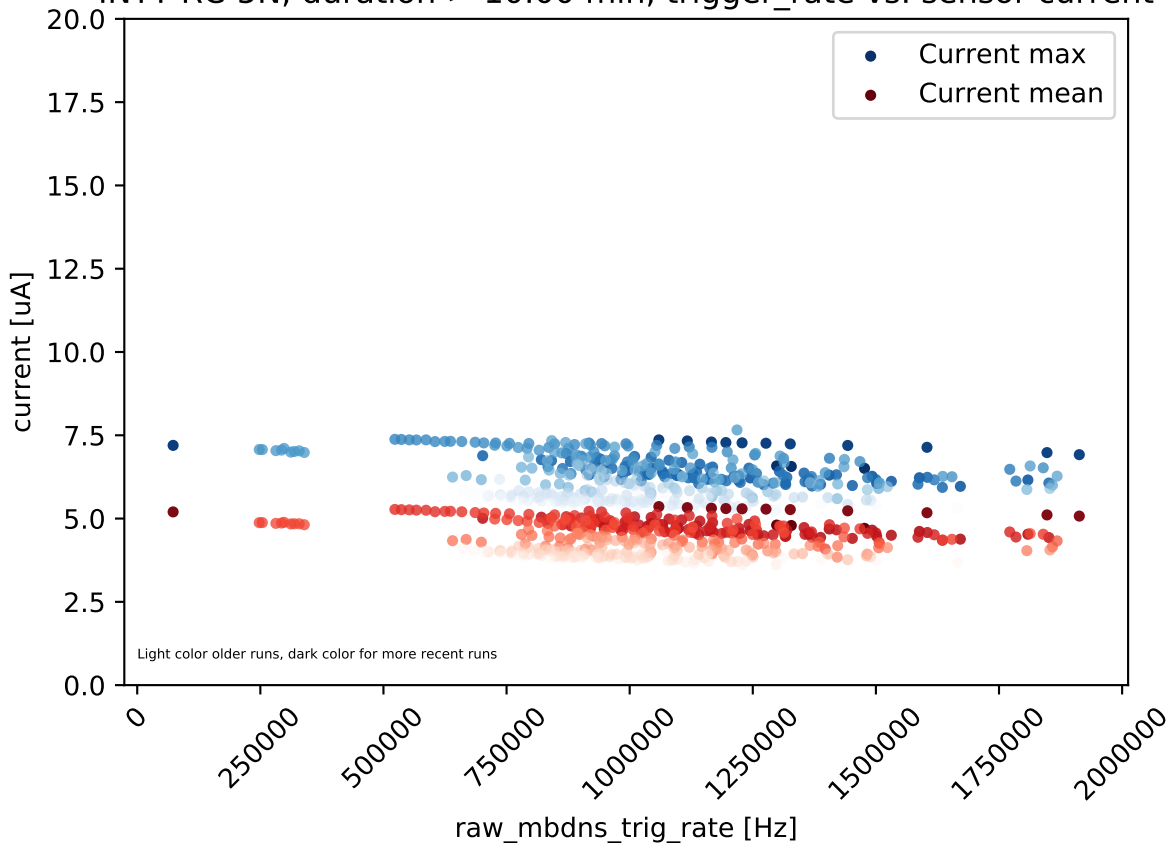
INTT RC-3N, duration > 10.00 min, trigger_rate vs. sensor current



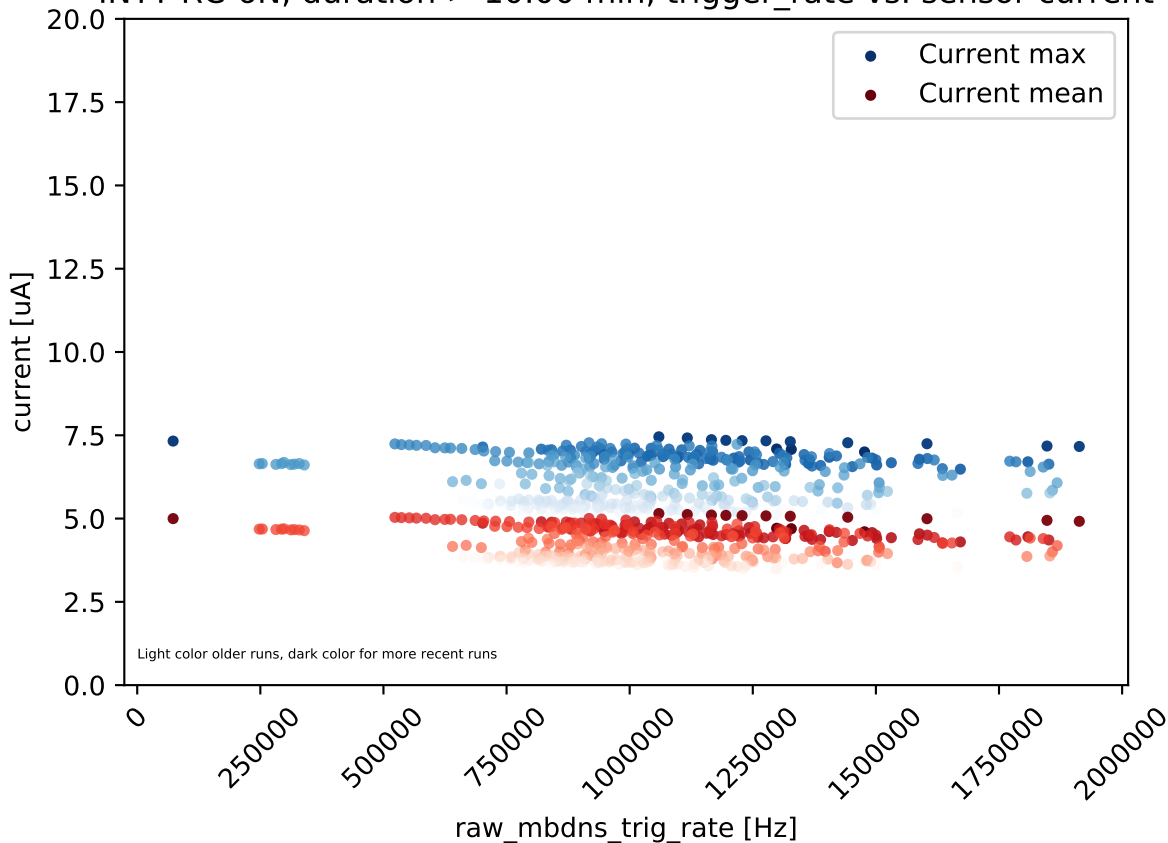
INTT RC-4N, duration > 10.00 min, trigger_rate vs. sensor current



INTT RC-5N, duration > 10.00 min, trigger_rate vs. sensor current



INTT RC-6N, duration > 10.00 min, trigger_rate vs. sensor current



INTT RC-7N, duration > 10.00 min, trigger_rate vs. sensor current

