

STAR Gas Equipment

Over pressure bubbler



Gas Room ~75 feet from IR



Gas pad, not climate controlled



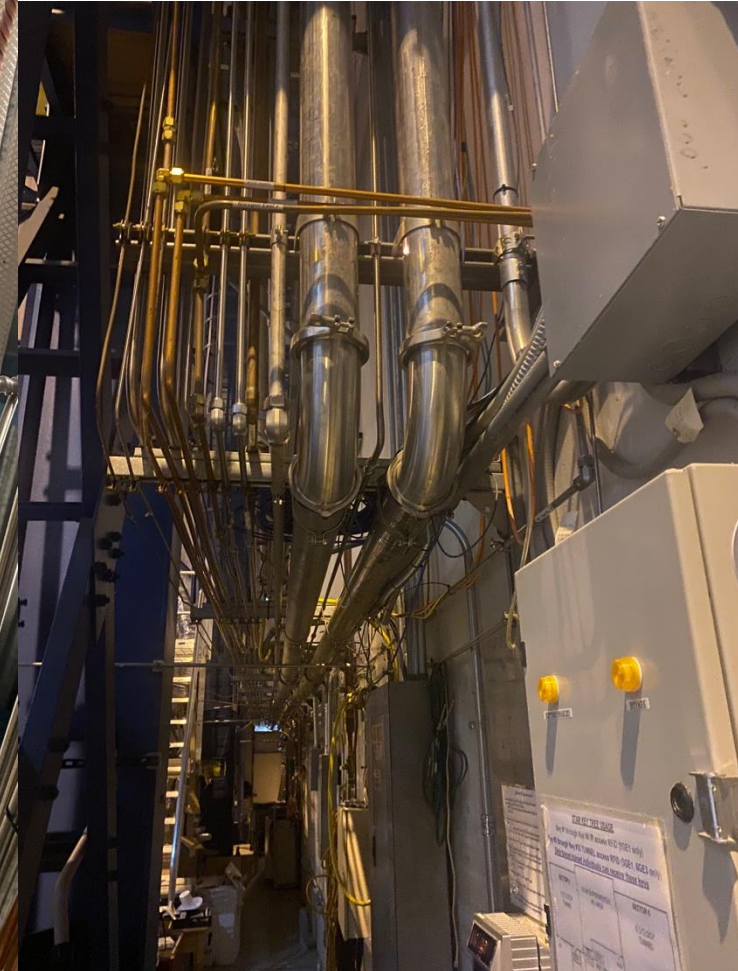
TPC gas vent line, in the gas pad



Supply and return lines, from the gas mixing cabinet, the solenoid valve is for venting the excess/overpressure



My opinion, the 4" gas lines are in good shape, could be reused. Need new seals.



Backup UPS for gas room, with power transfer switch for uninterrupted UPS maintenance.

