

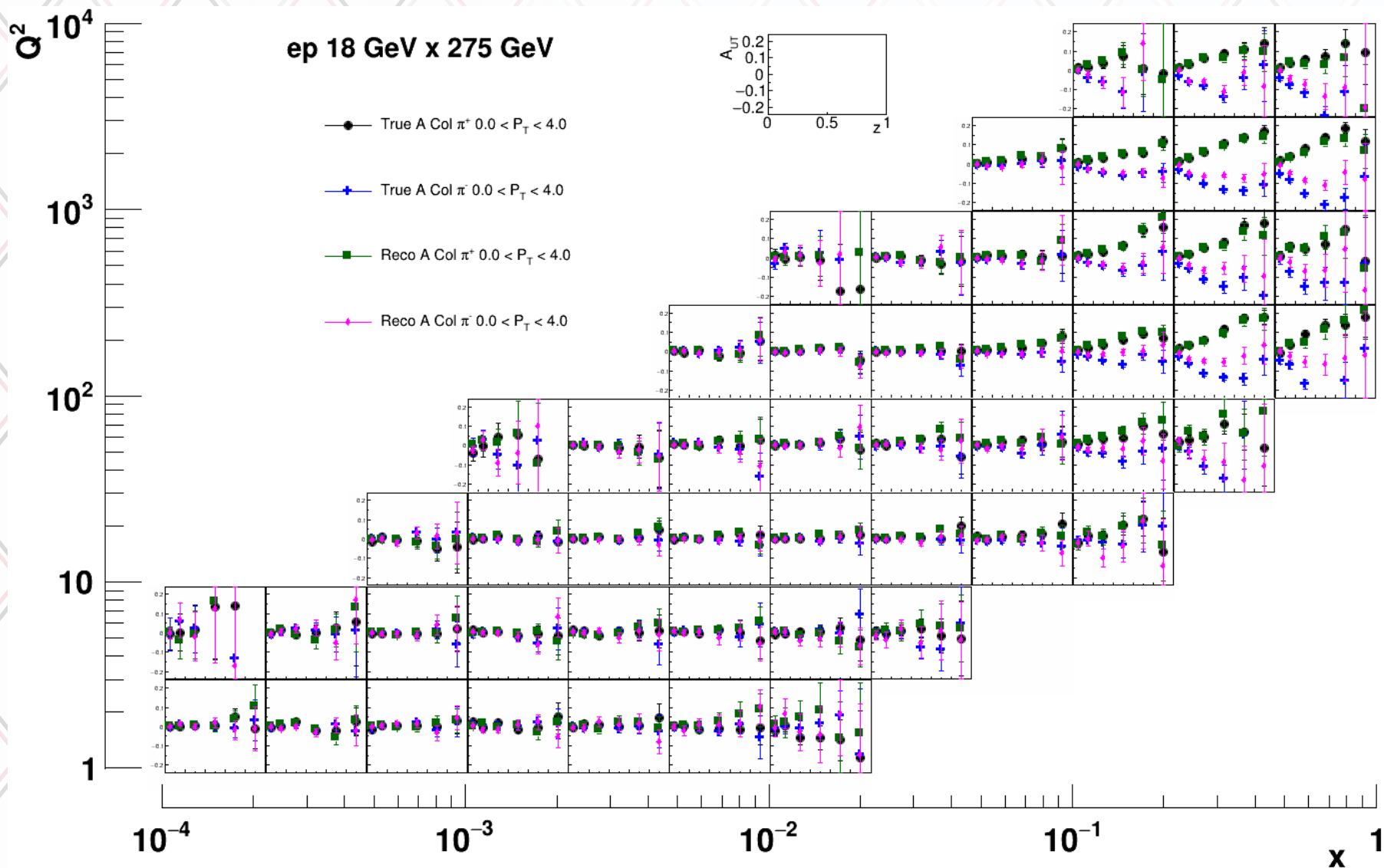
AUT projections, etc

Ralf Seidl (RIKEN)

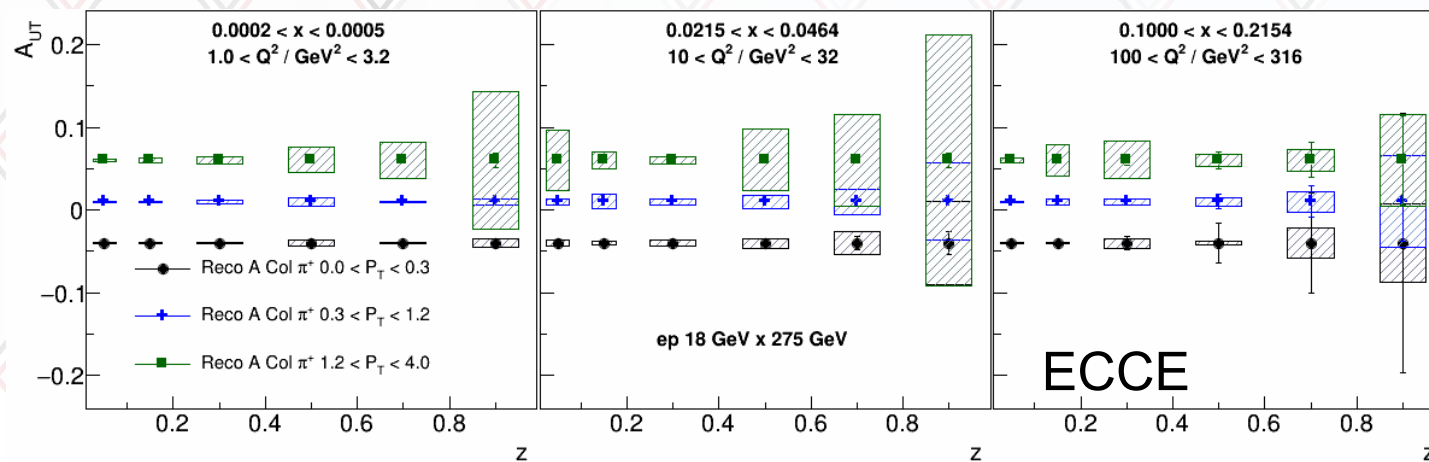
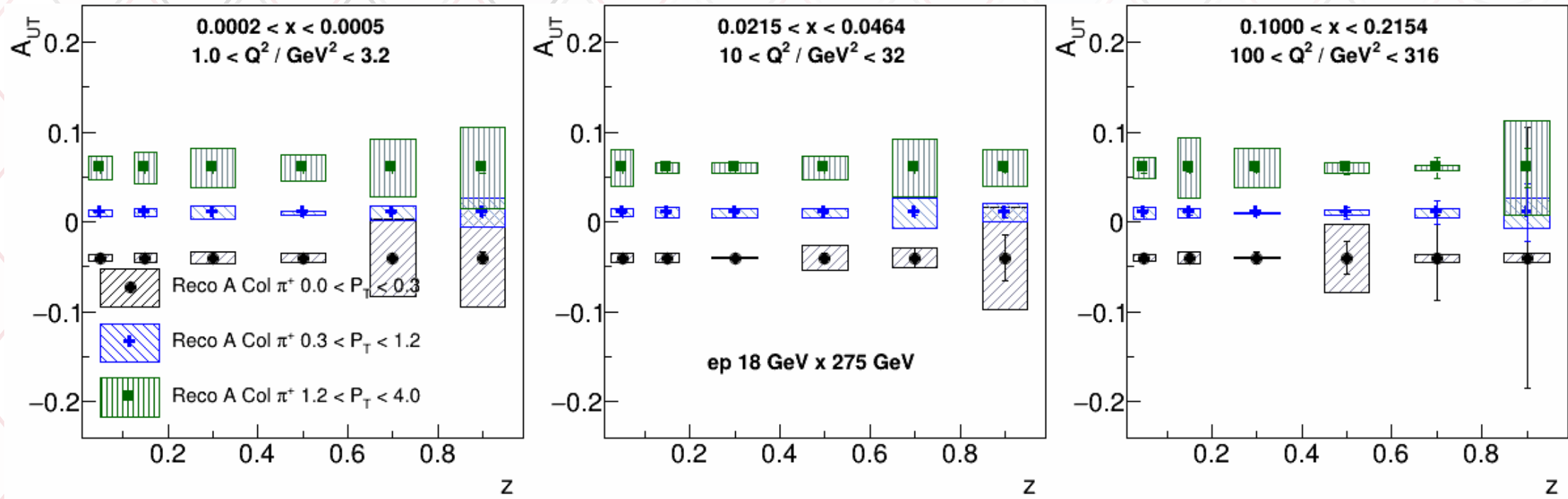
Status

- Using 24.07 production on S3 (24.09 on xrootd looks similar)
- DIS/NC/.../pythia8NCDIS in 4 Q2 bins
- Used Electron method for now
- Use true PID so far

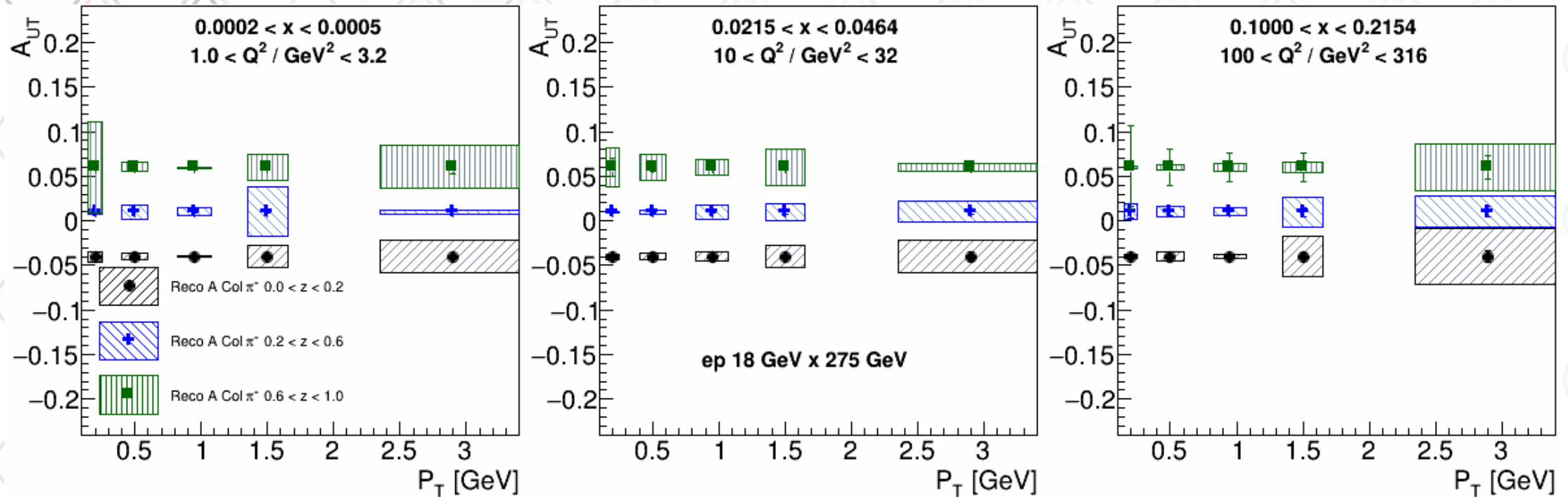
True and reconstructed asymmetries (Torino parameterization)



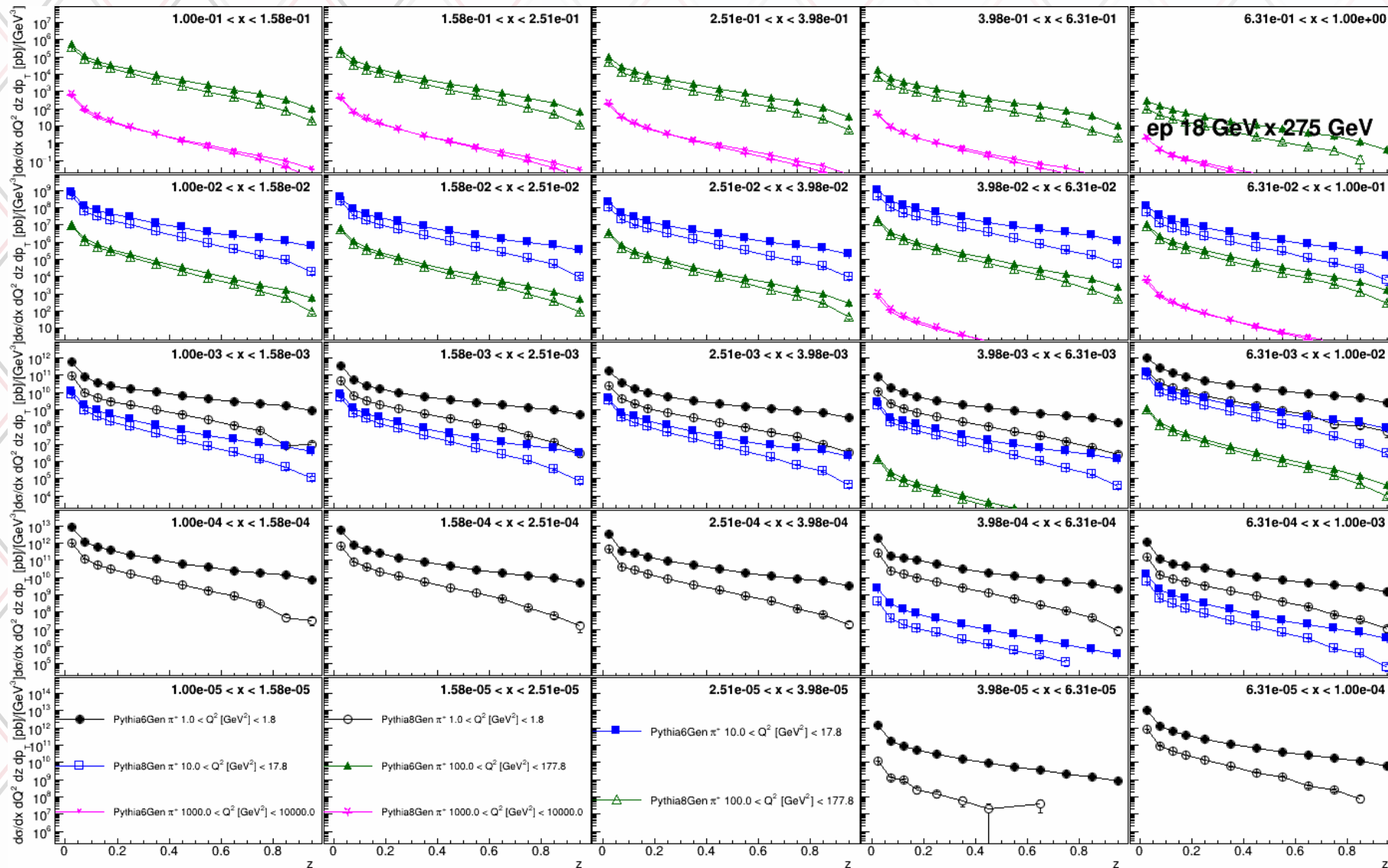
Updated AUT projections sample plots vs z



Updated AUT projections sample plots vs p_T



Comparison of z distributions, generated Pythia6 vs 8



Summary

- Projections are now ready for TDR, very similar to ECCE projections
- Various studies to cross check my initial results
 - Some differences between Pythia 6 and 8, but not very large
 - Cross sections/normalizations slightly off?