

EPIC SVT

Assembly Flow Option 2

Ken Davies

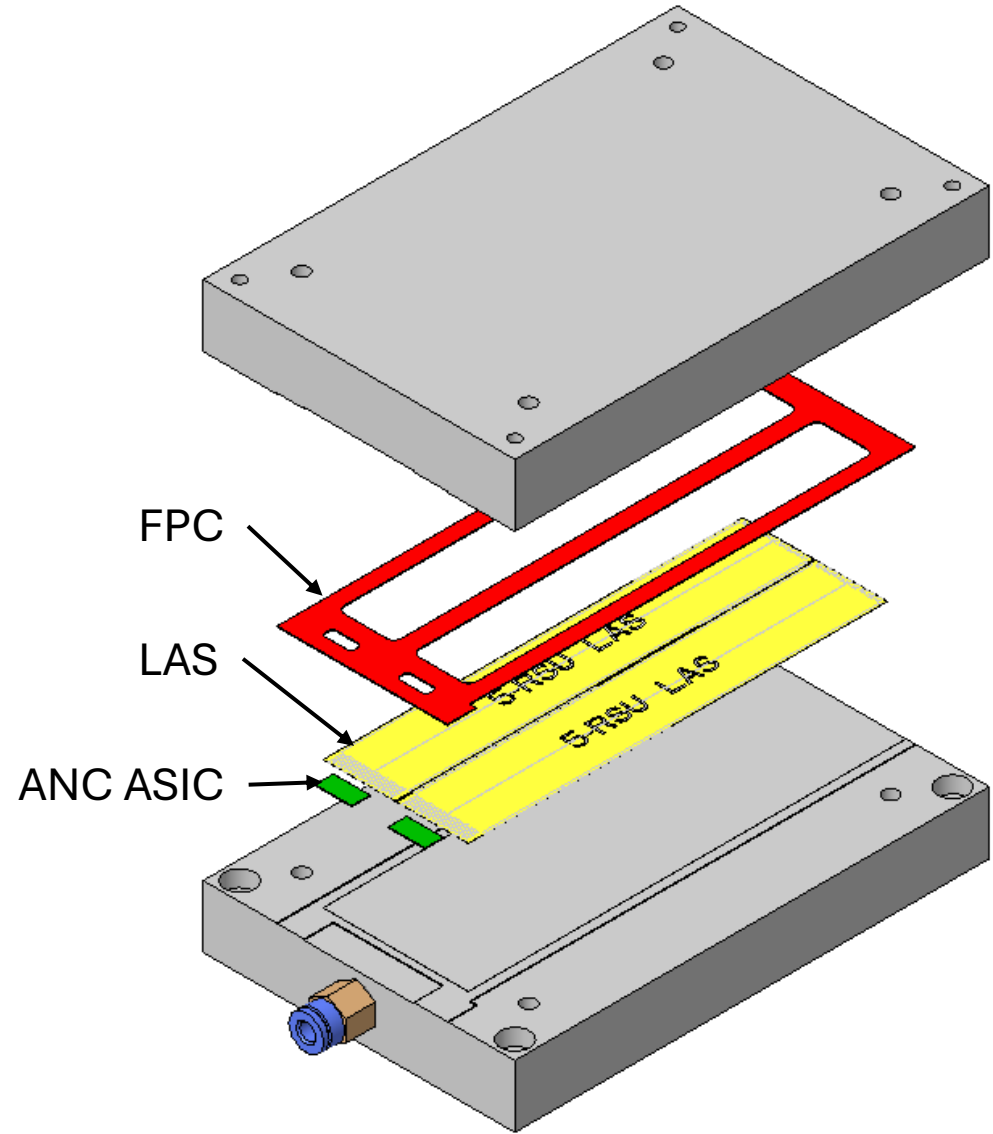
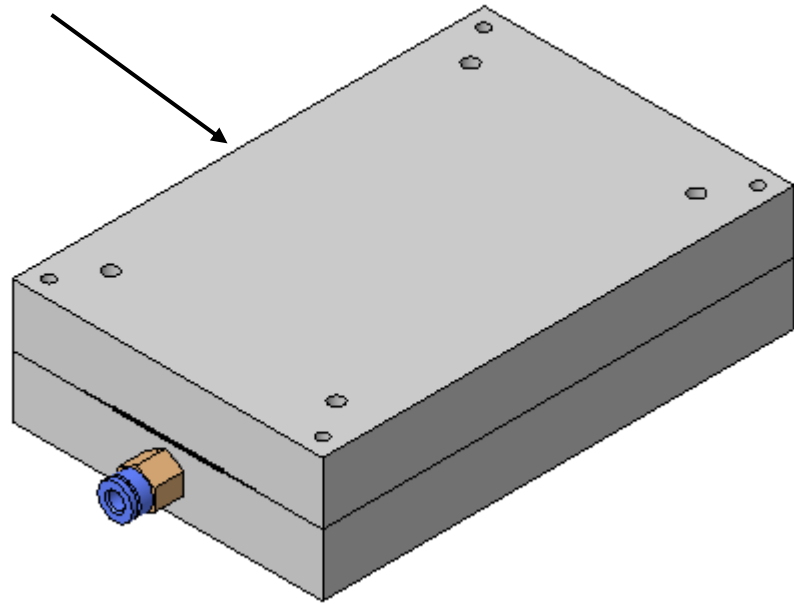
Mechanical Design Engineer

PME Group, Technology Department

STFC Daresbury Laboratory

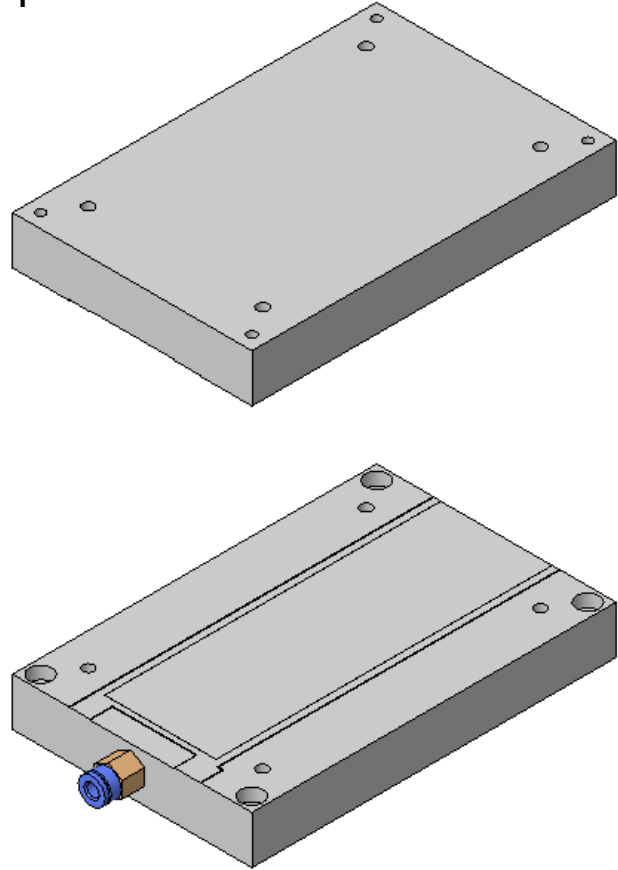
3rd December 2024

JIG ASSEMBLY

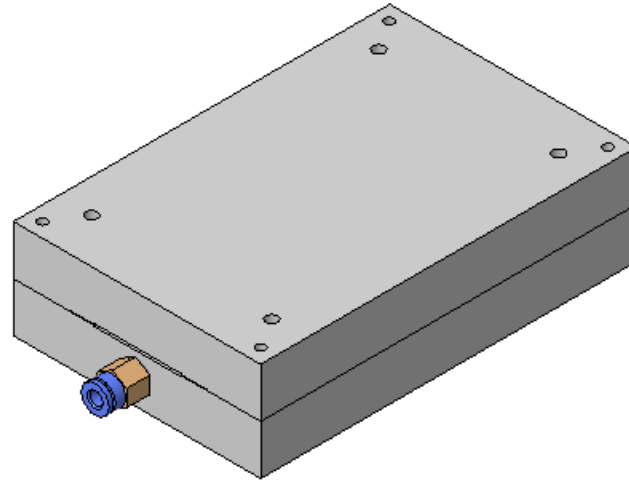


ASSEMBLE FIRST LAS

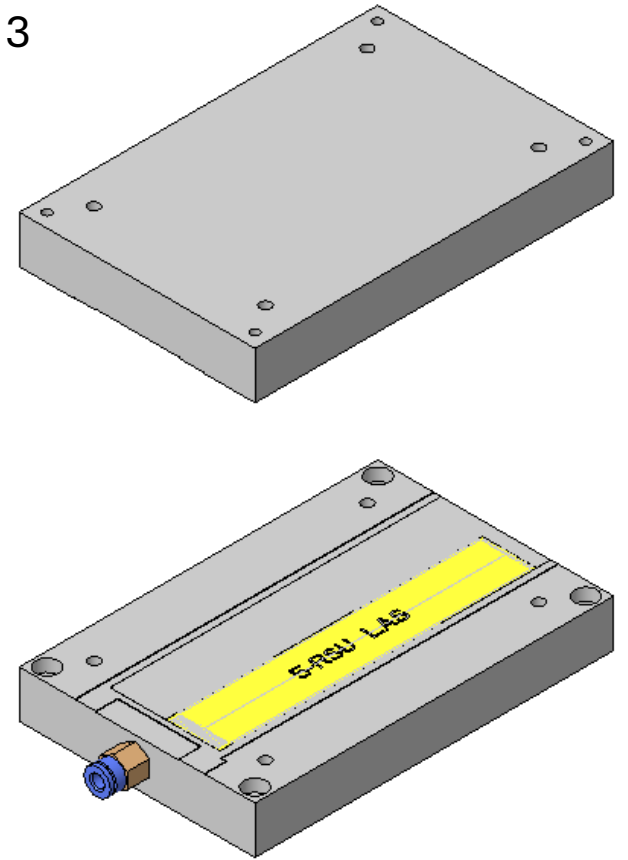
Step 1



Step 2

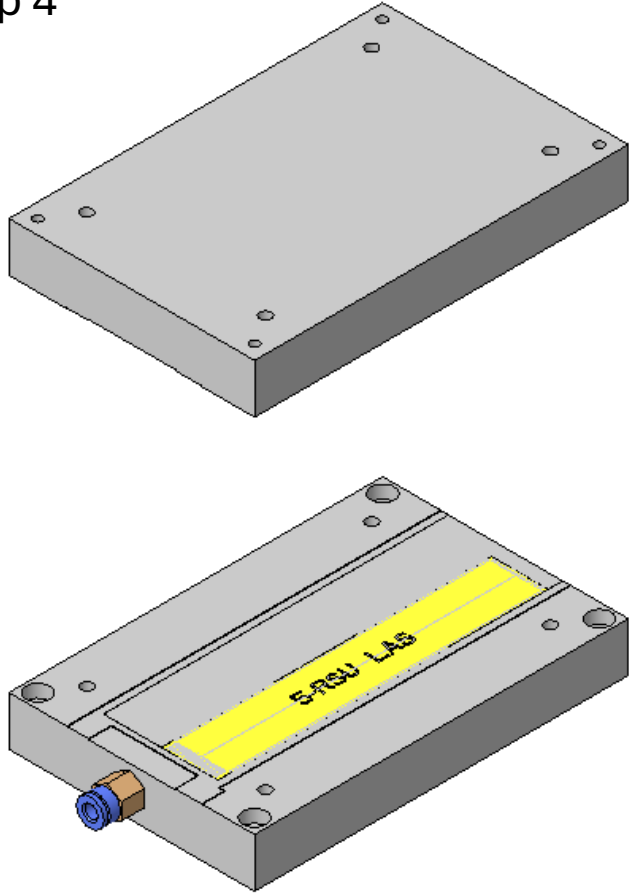


Step 3

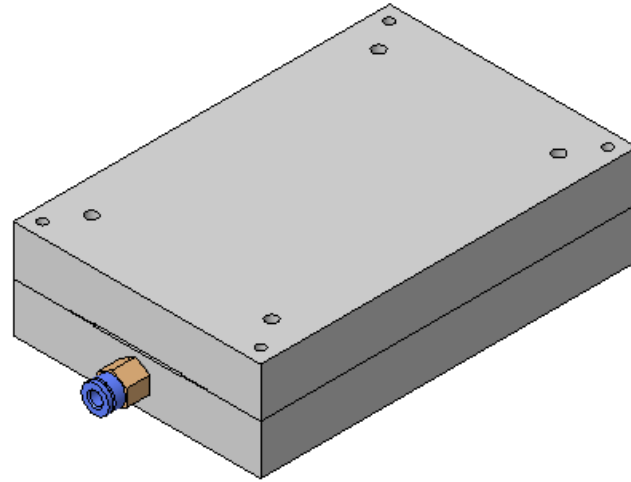


ASSEMBLE SECOND LAS

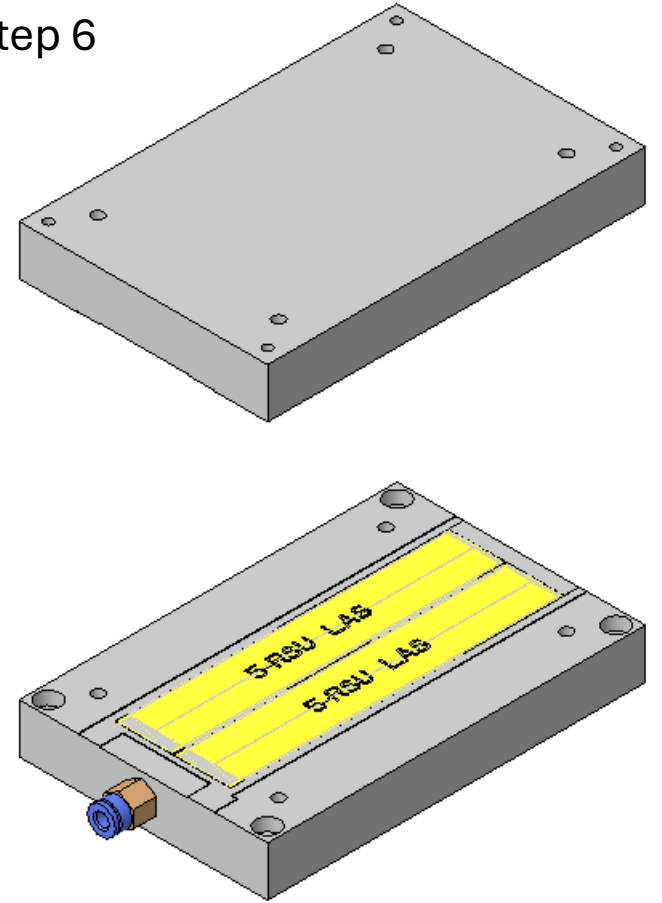
Step 4



Step 5

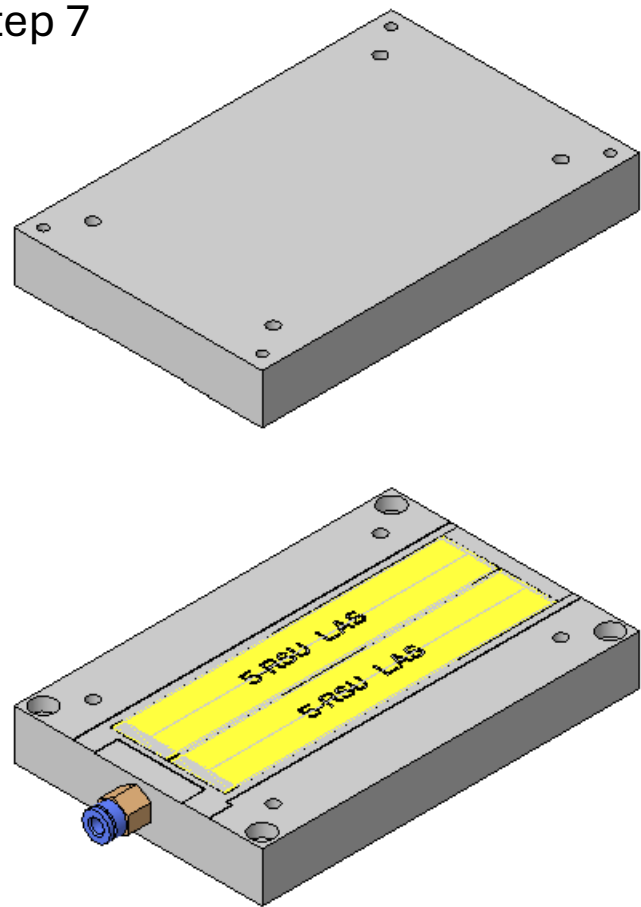


Step 6

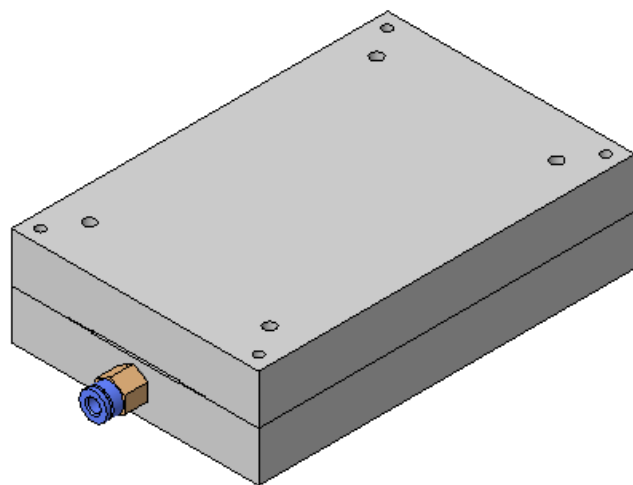


ASSEMBLE FIRST ANC ASIC

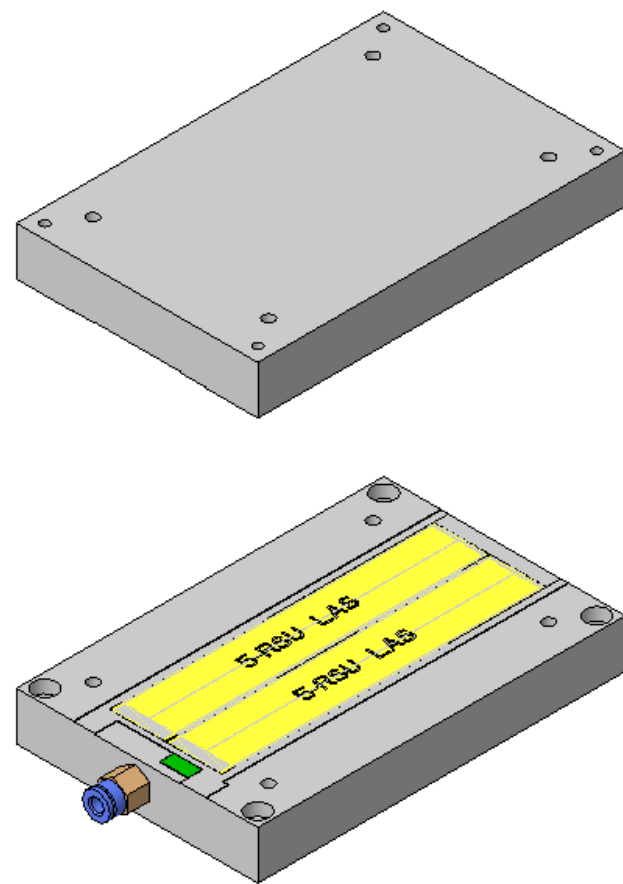
Step 7



Step 8

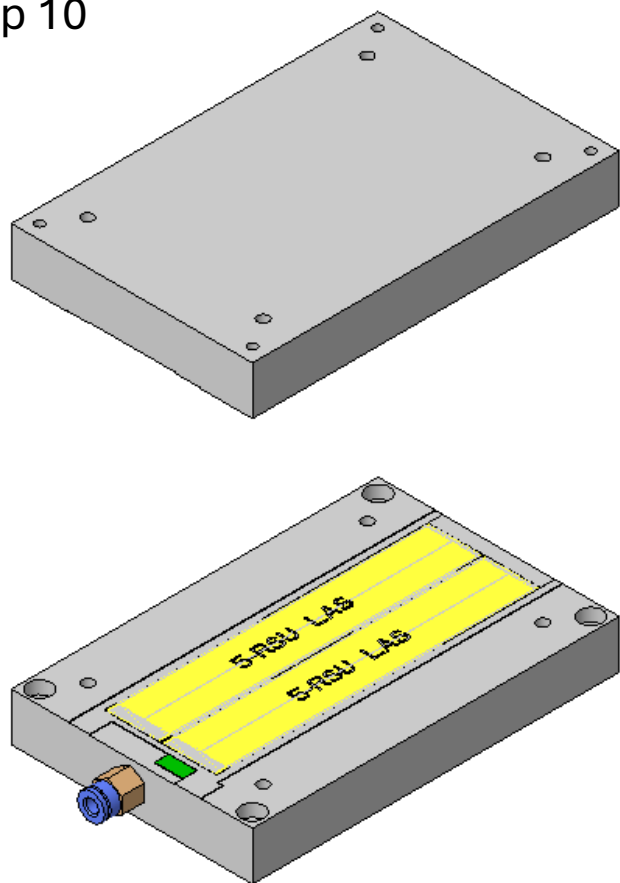


Step 9

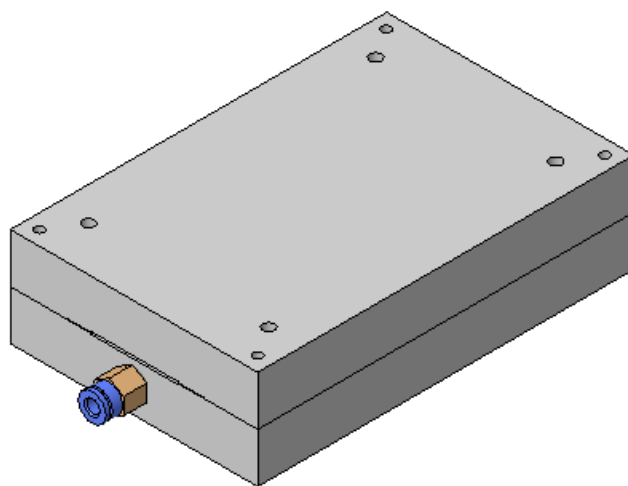


ASSEMBLE SECOND ANC ASIC

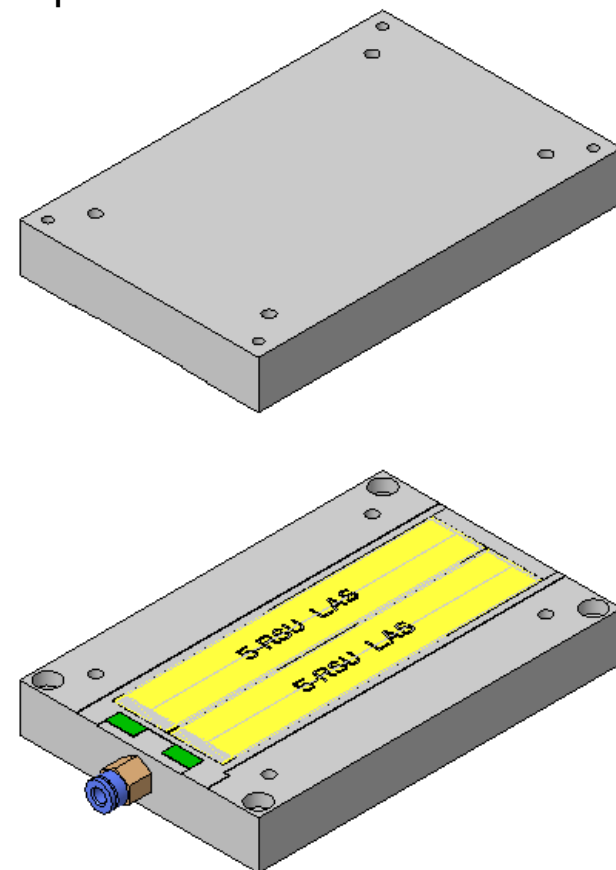
Step 10



Step 11

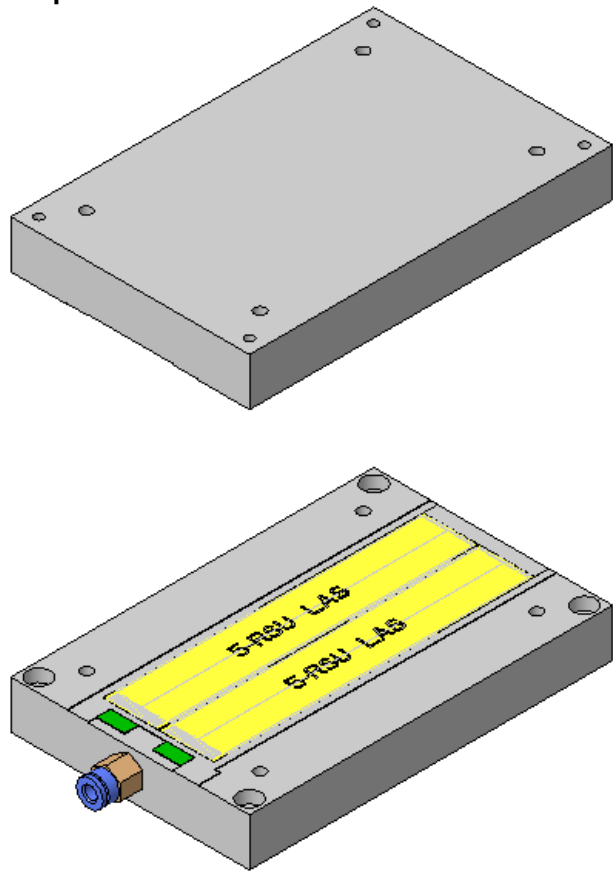


Step 12

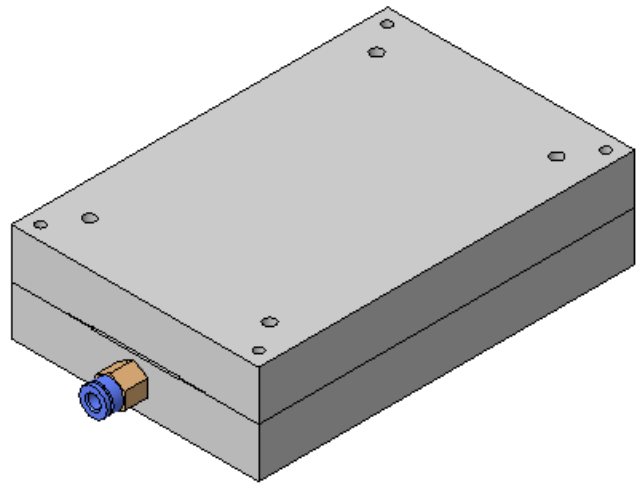


ASSEMBLE FPC

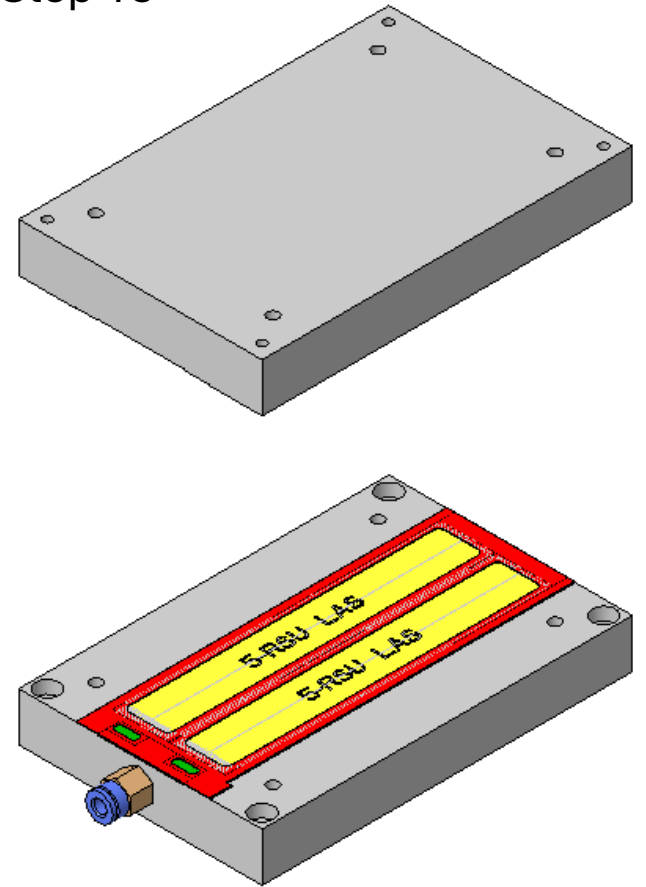
Step 13



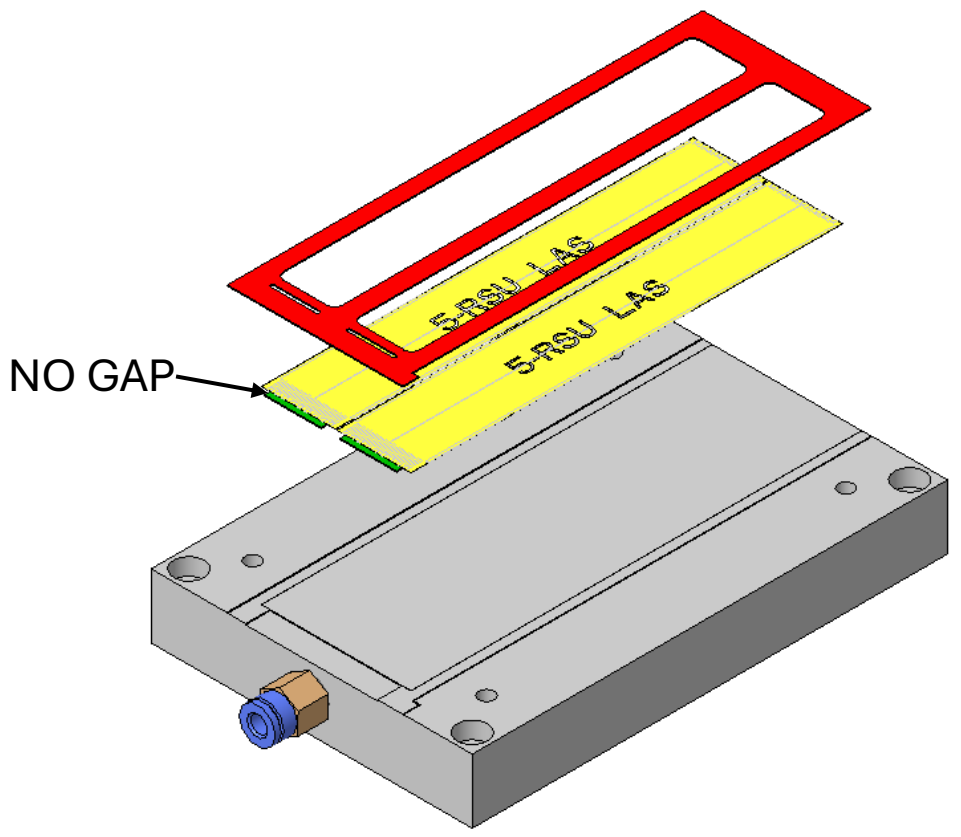
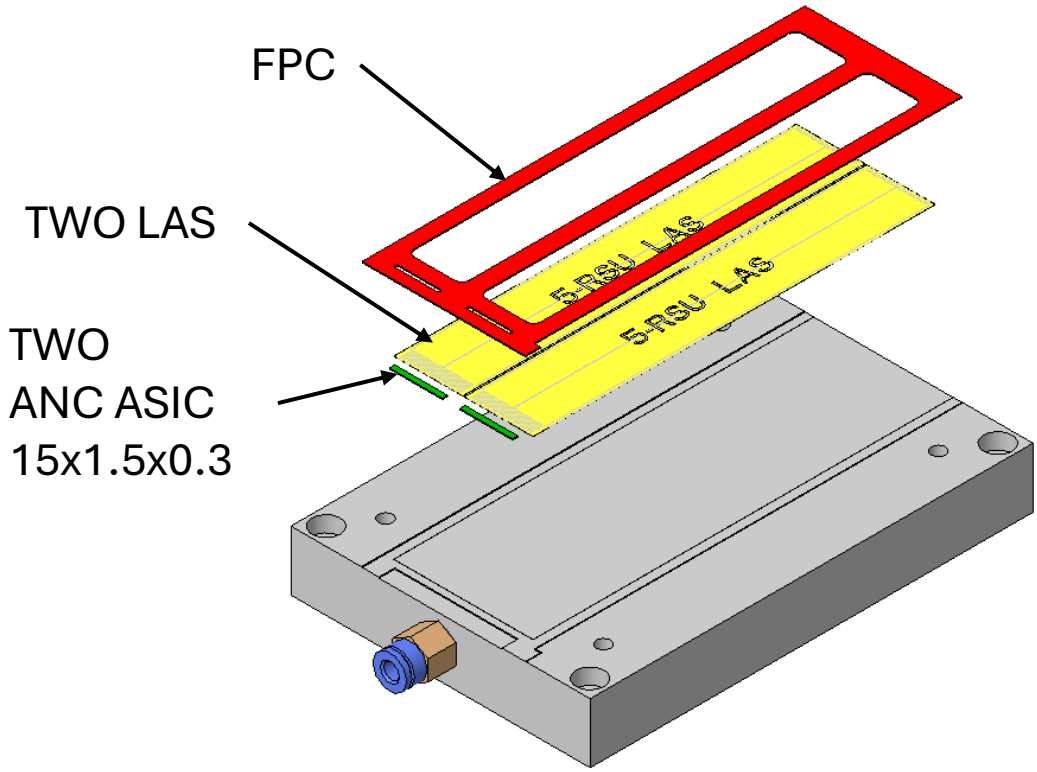
Step 14

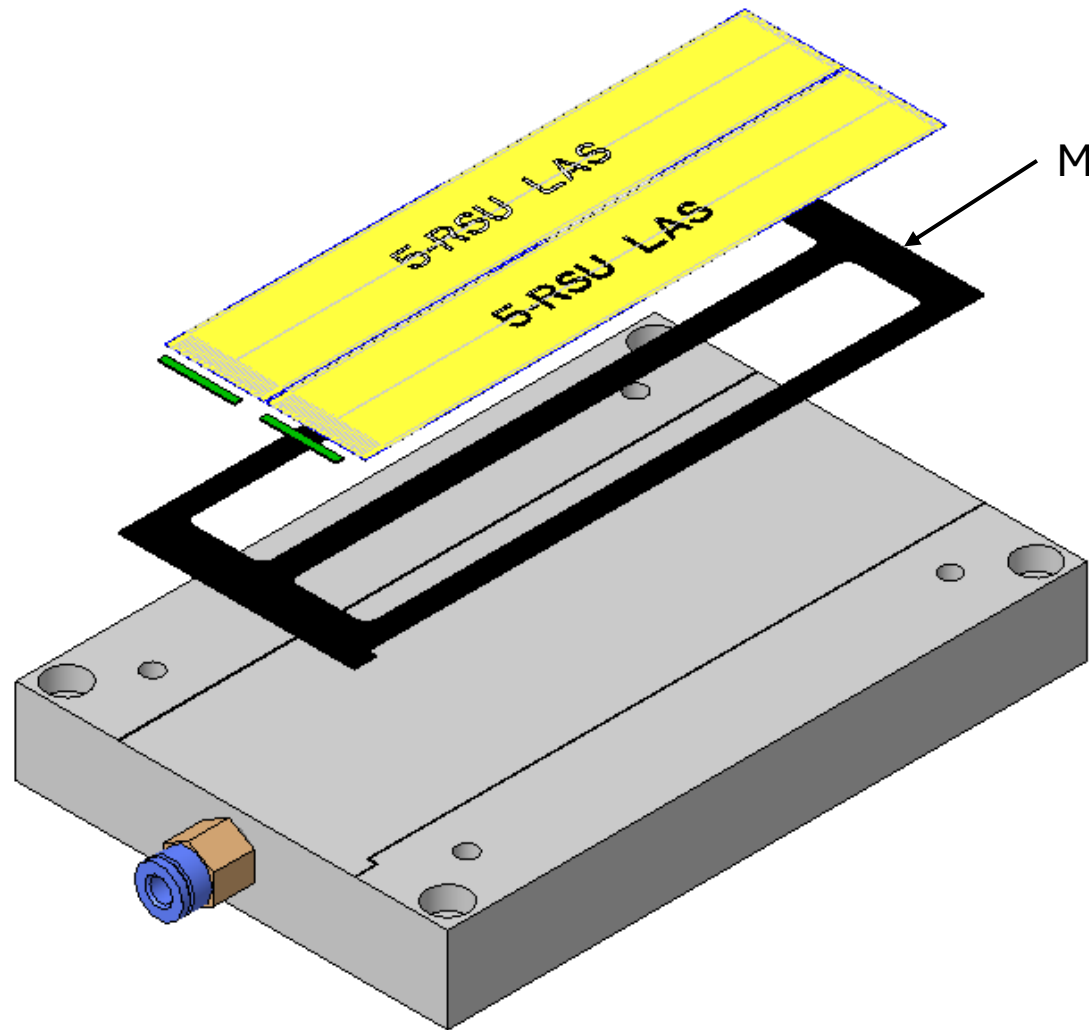


Step 15

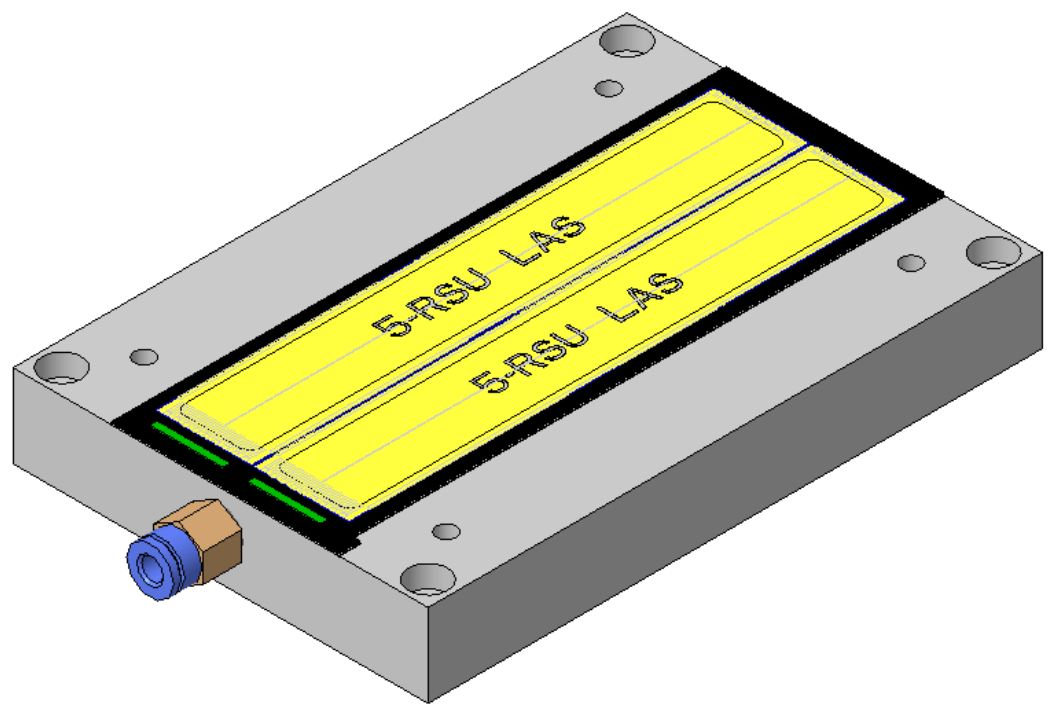


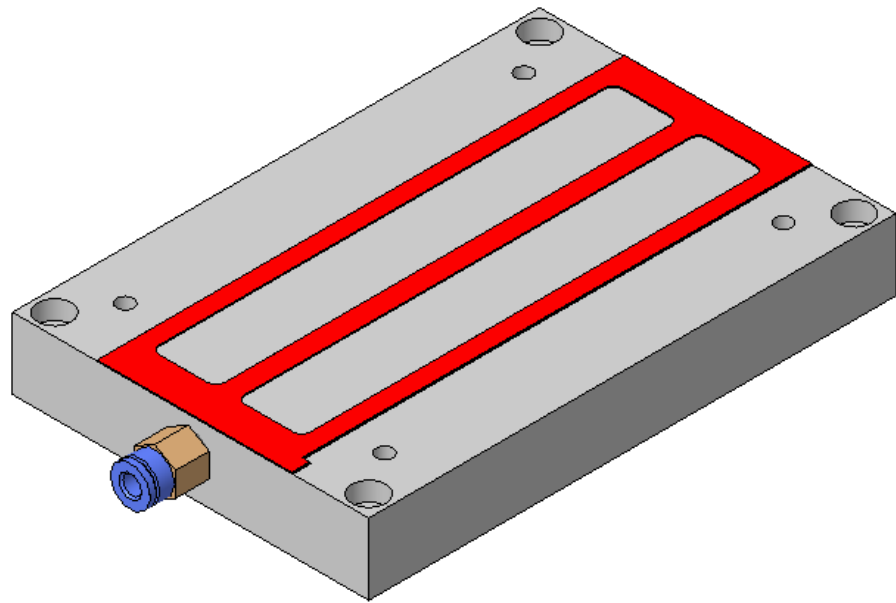
OTHER CONCEPTS



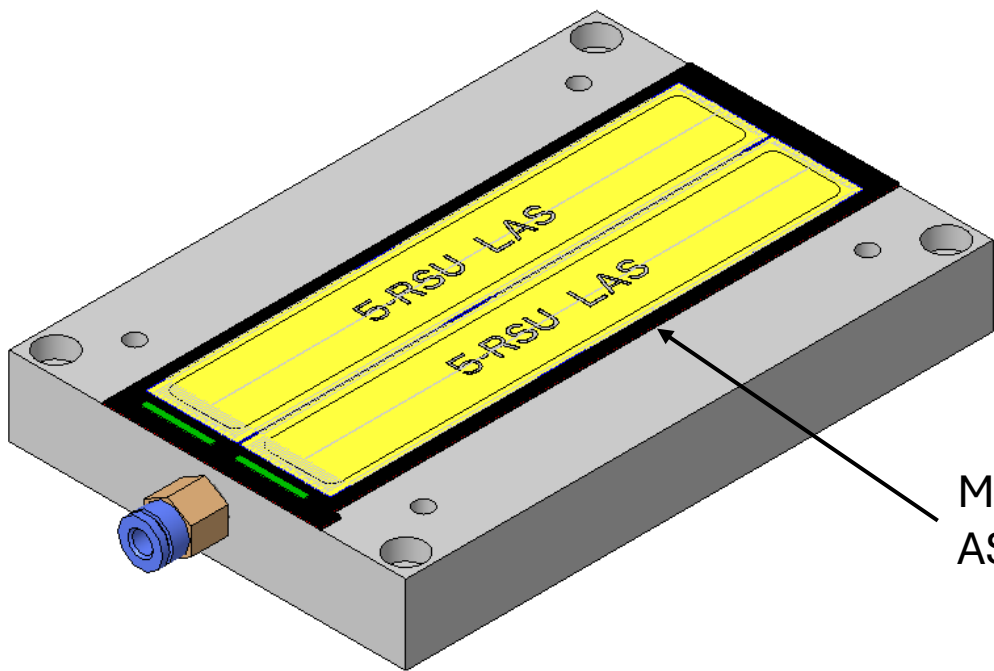
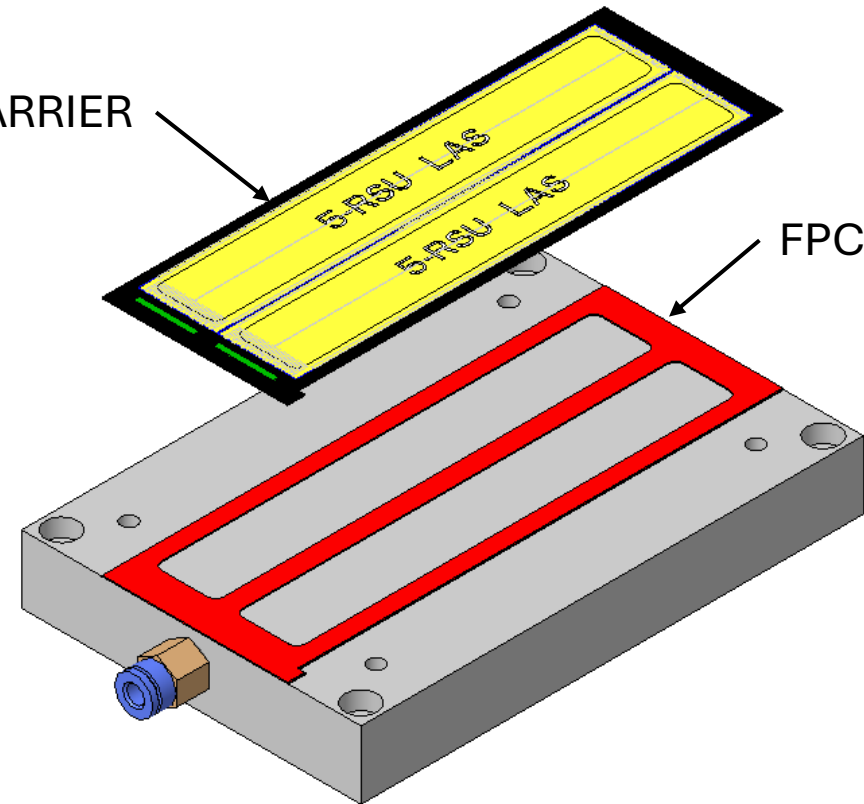


MODULE CARRIER





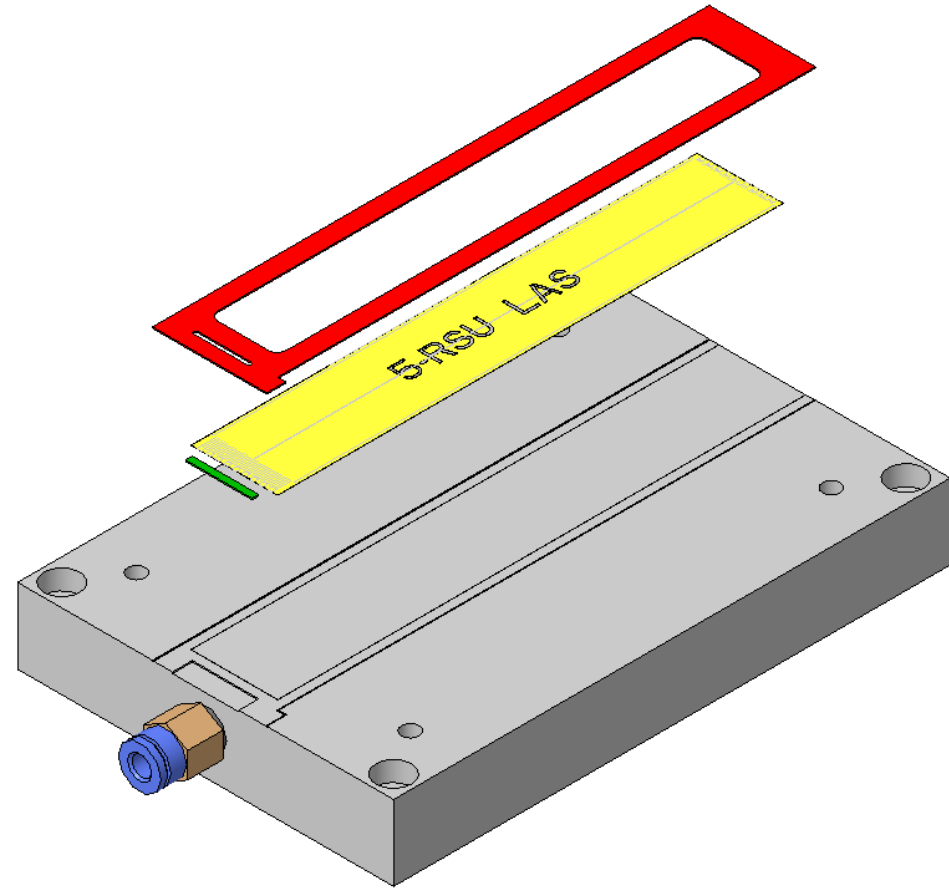
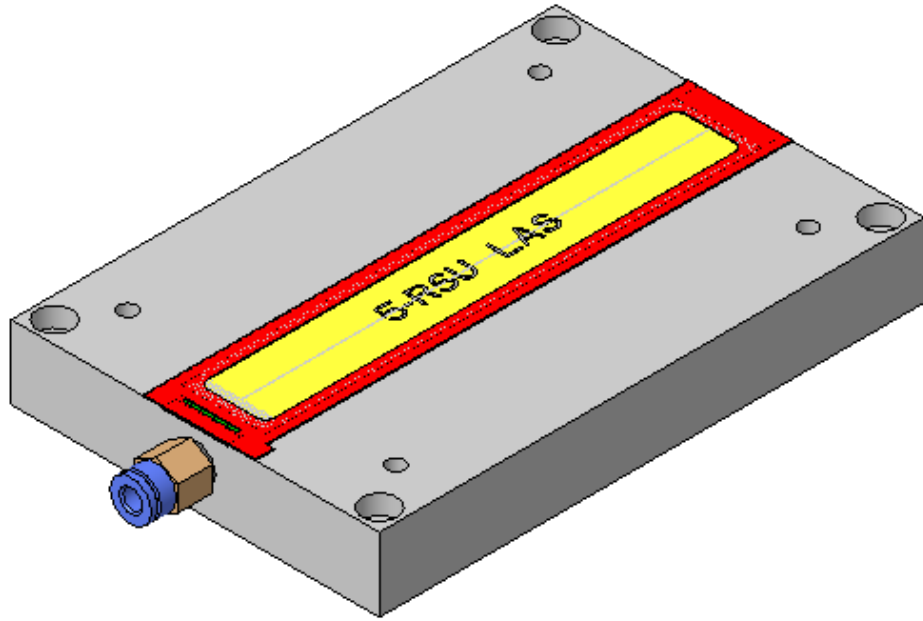
MODULE AND CARRIER



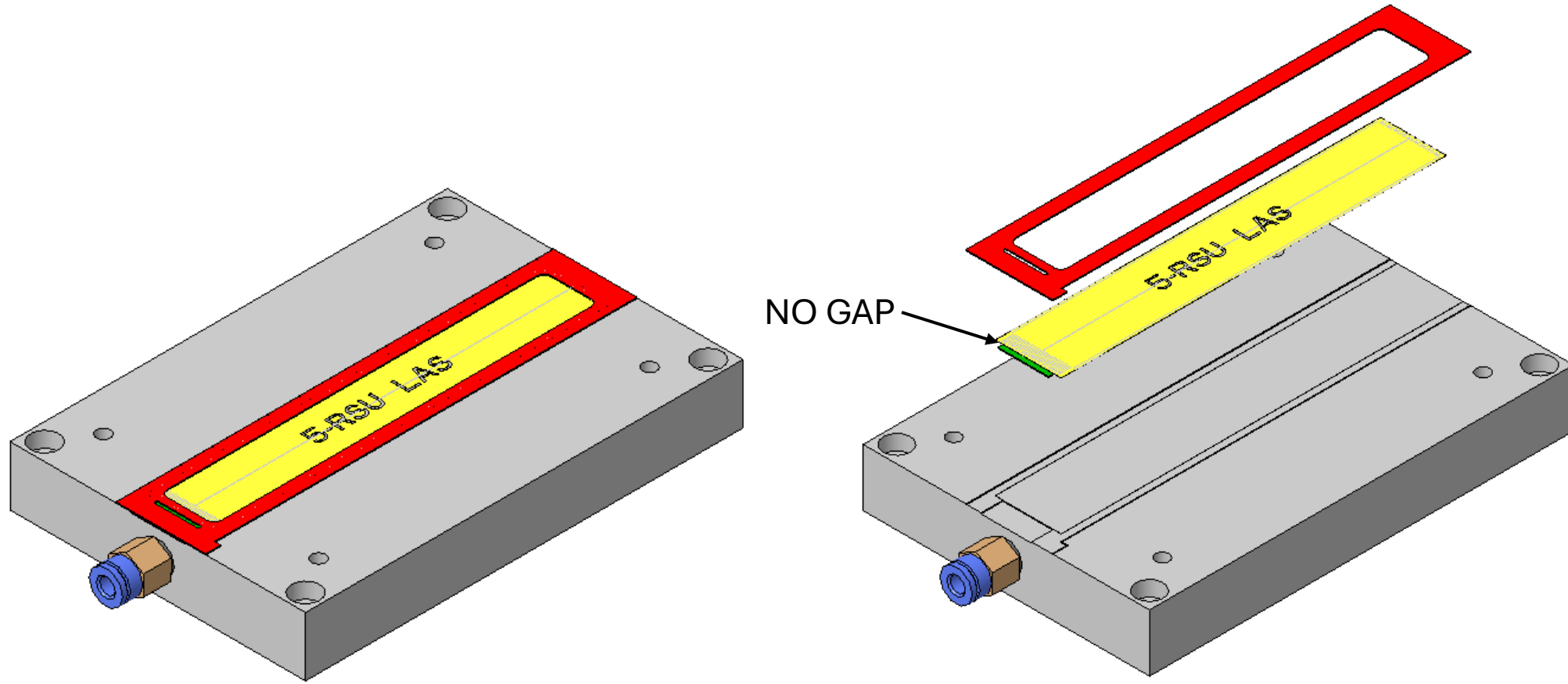
MODULE AND CARRIER
ASSEMBLED ONTO FPC

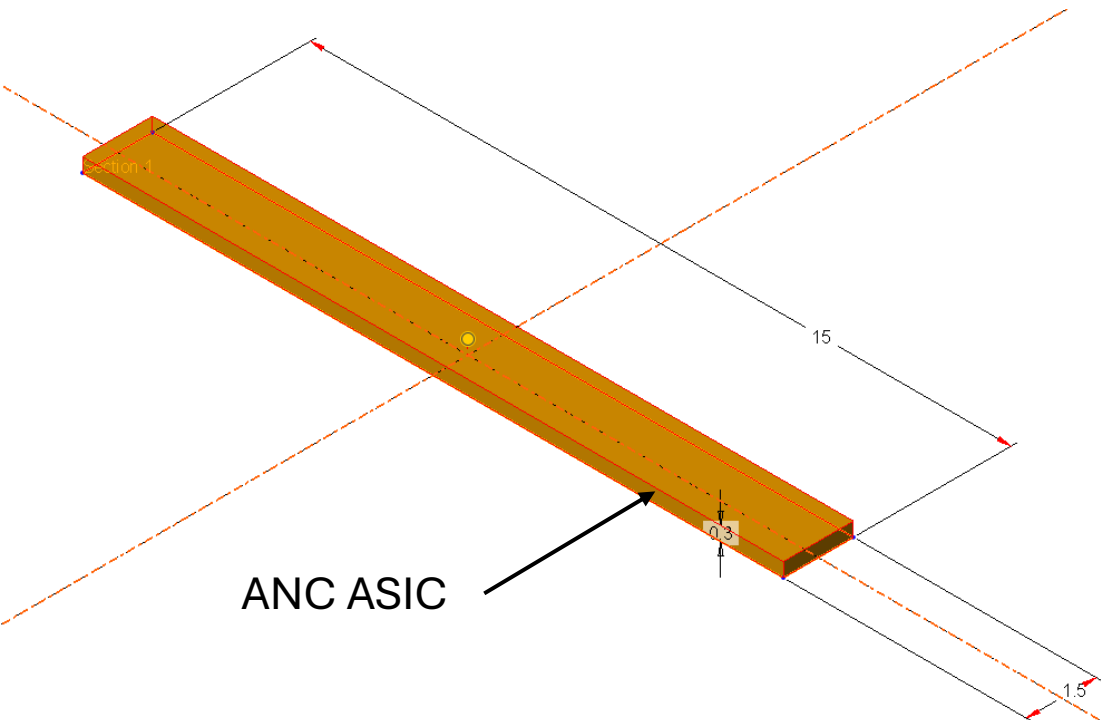
SINGLE LAS ARRANGEMENT

SAME PRINCIPLE AS DOUBLE
LAS ARRANGEMENT SHOWN ON
PREVIOUS SLIDES

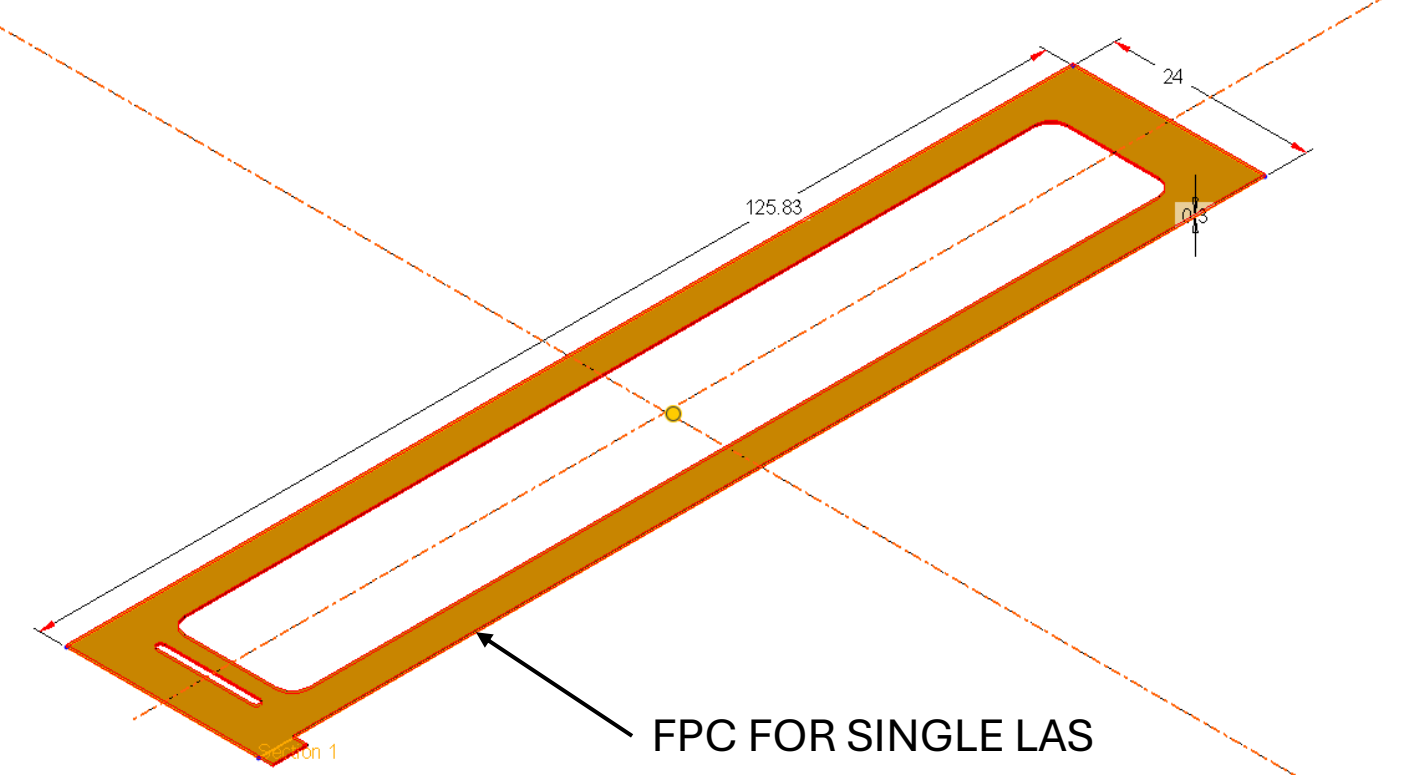


SINGLE LAS ARRANGEMENT

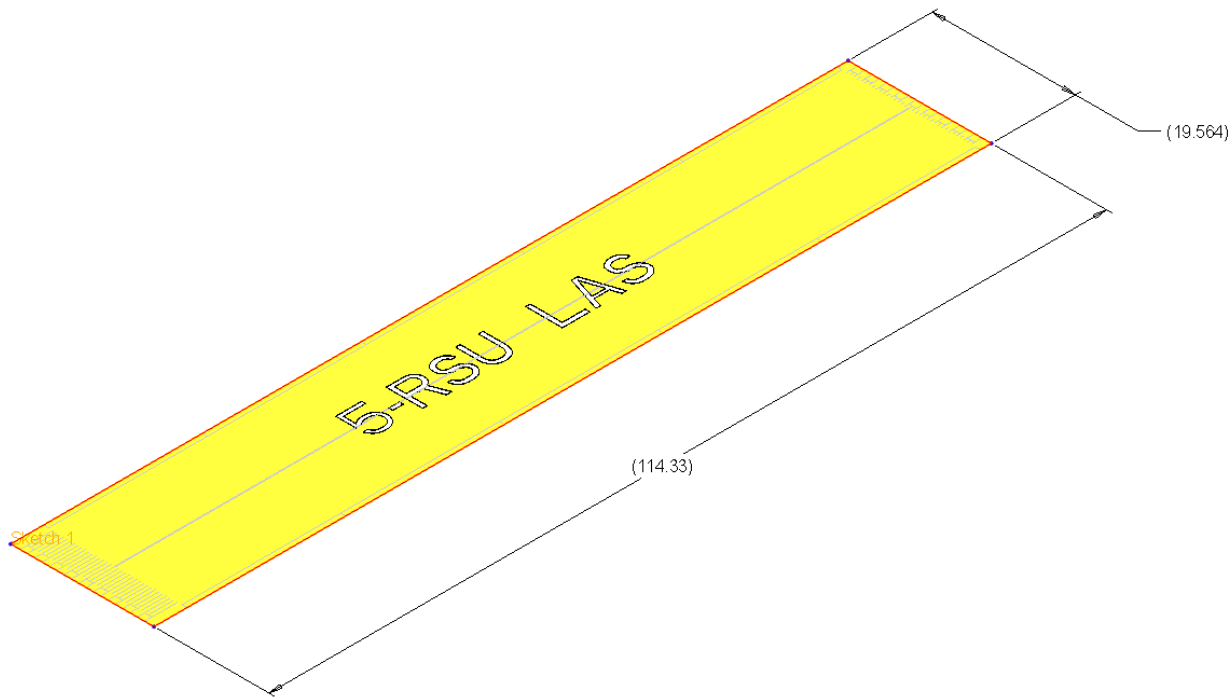




ANC ASIC



FPC FOR SINGLE LAS



TYPICAL COMPONENT DIMENSIONS