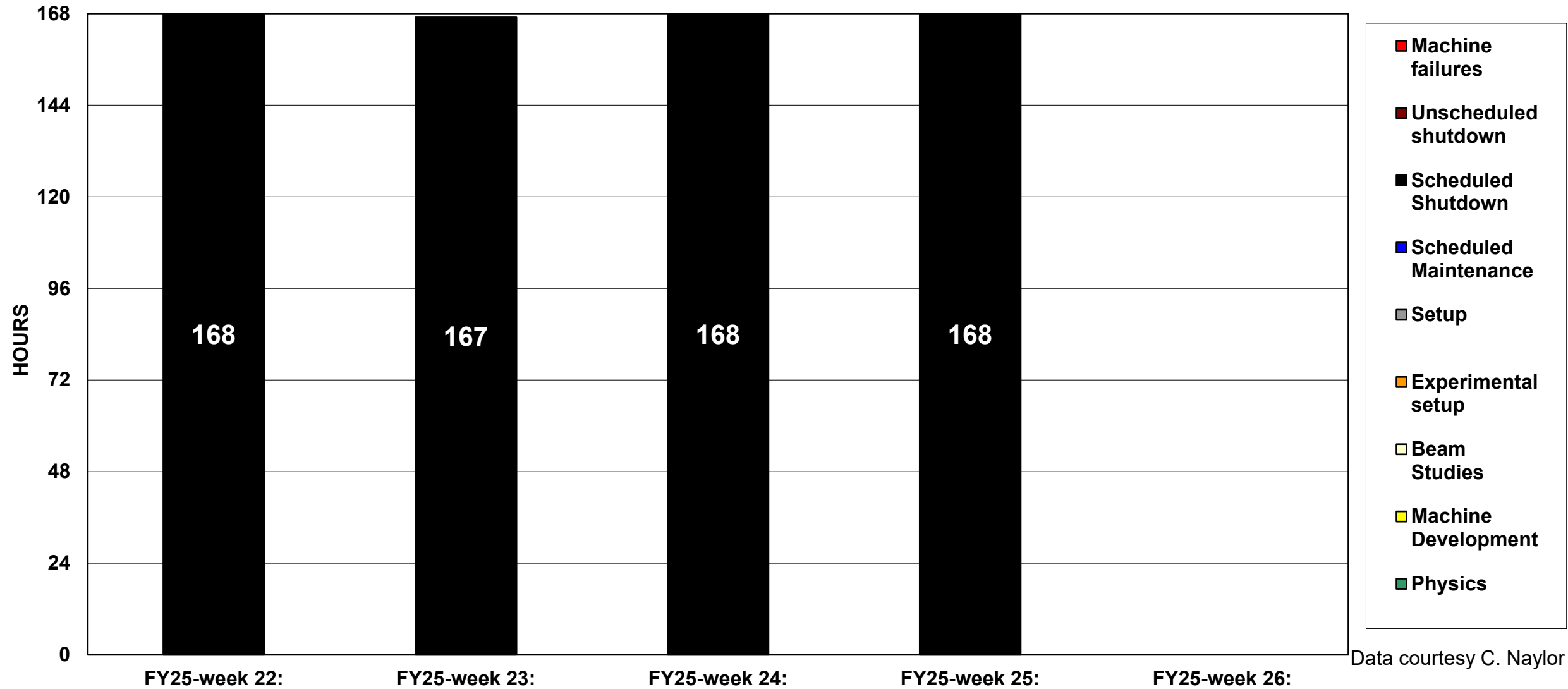
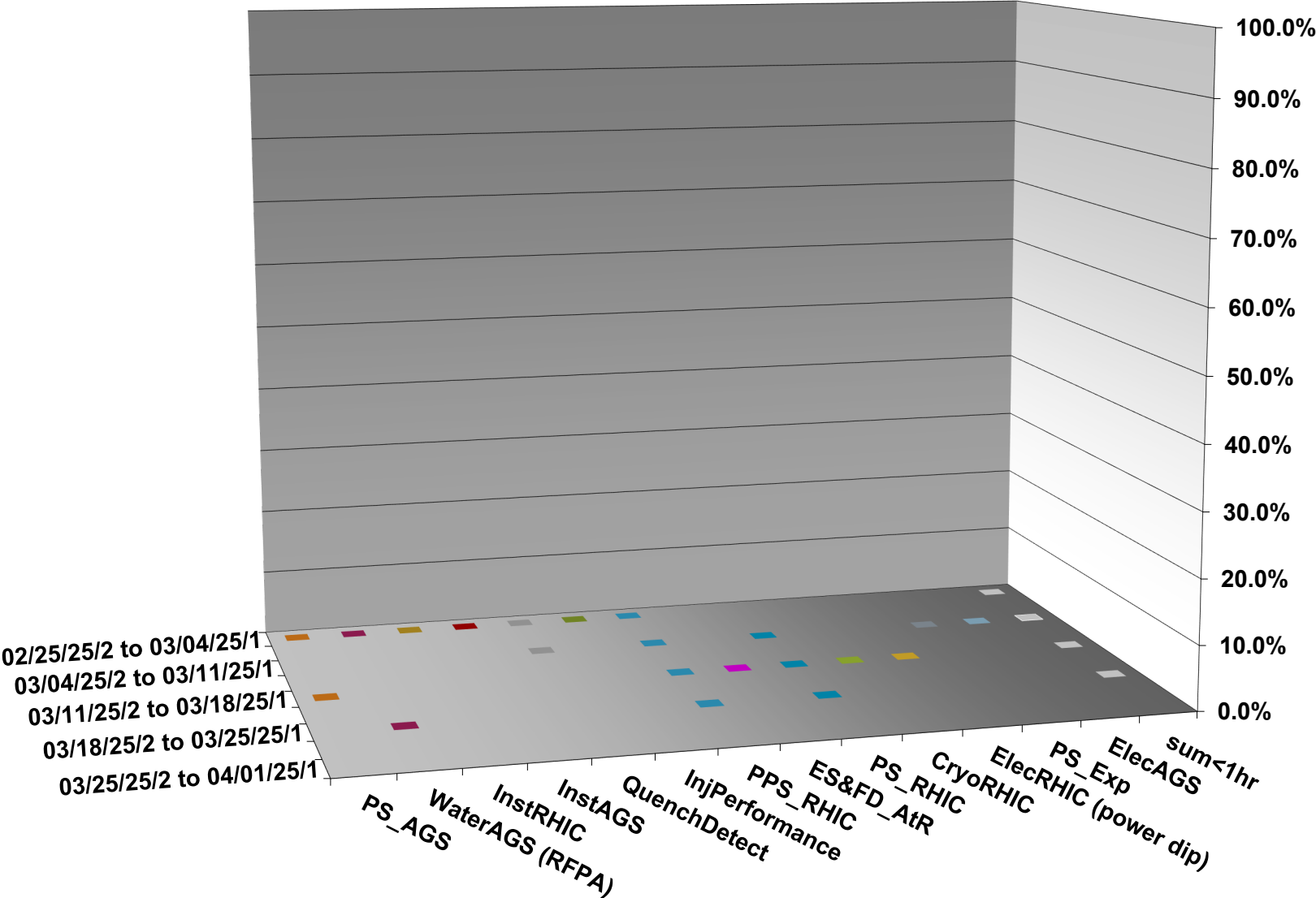


C-AD ACTIVITY MARCH 2025



INTEGRATED FAILURES (GREATER THAN ONE HOUR) BY SYSTEM -- MARCH 2025



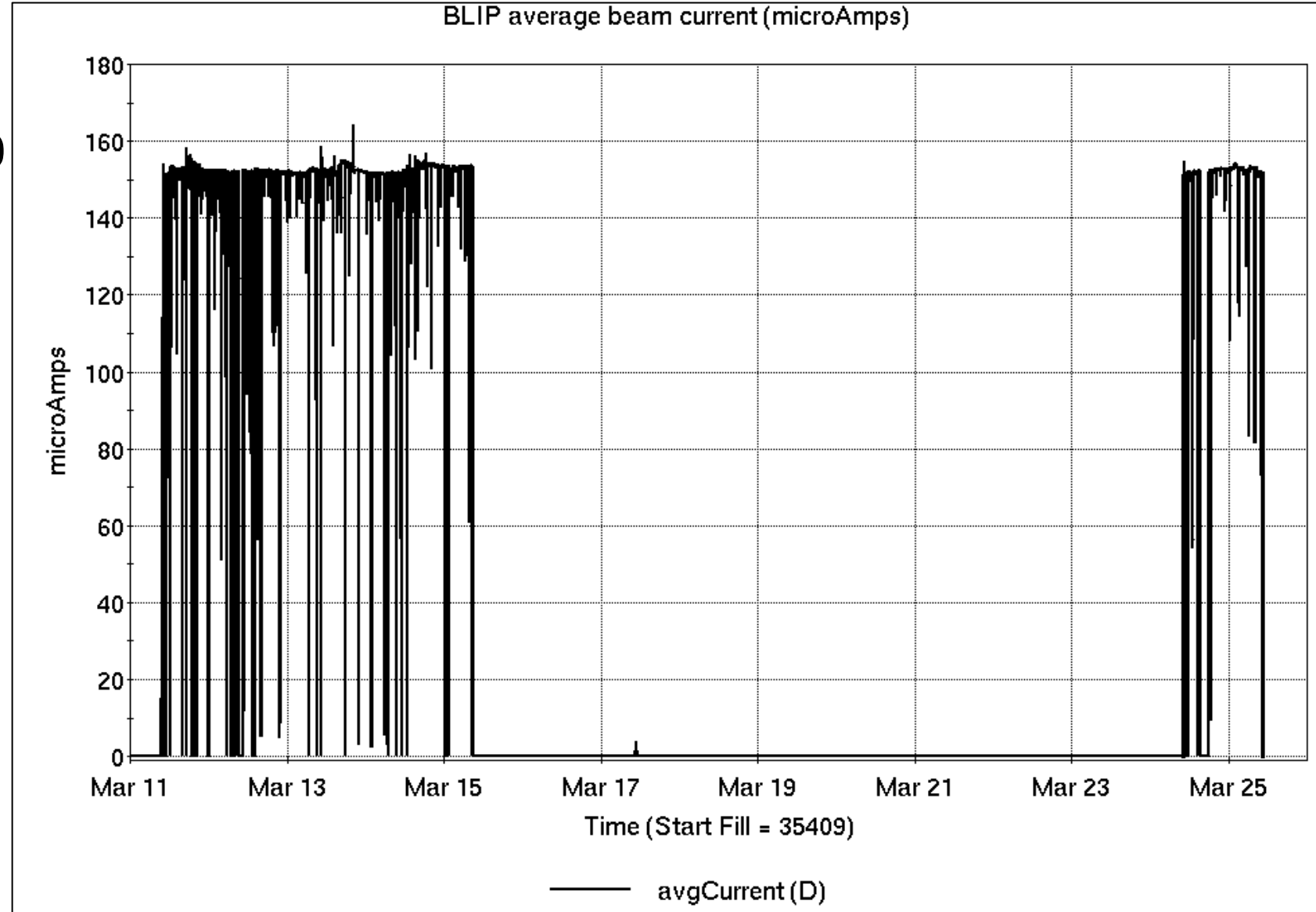
Operations for BLIP

3/11-25/2025:

Following repair to Mod5, 200 MeV production continued another 5 days on same target. After a brief low intensity exposure last Monday, a second Th production run began this Monday and is ongoing.

- 108.32 hr production
- 3.20 hr setup
- 9.52 hr failures

Availability: 92.1%



NSRL activity past 2 weeks: 3/11-25/2025 (as of 0800)

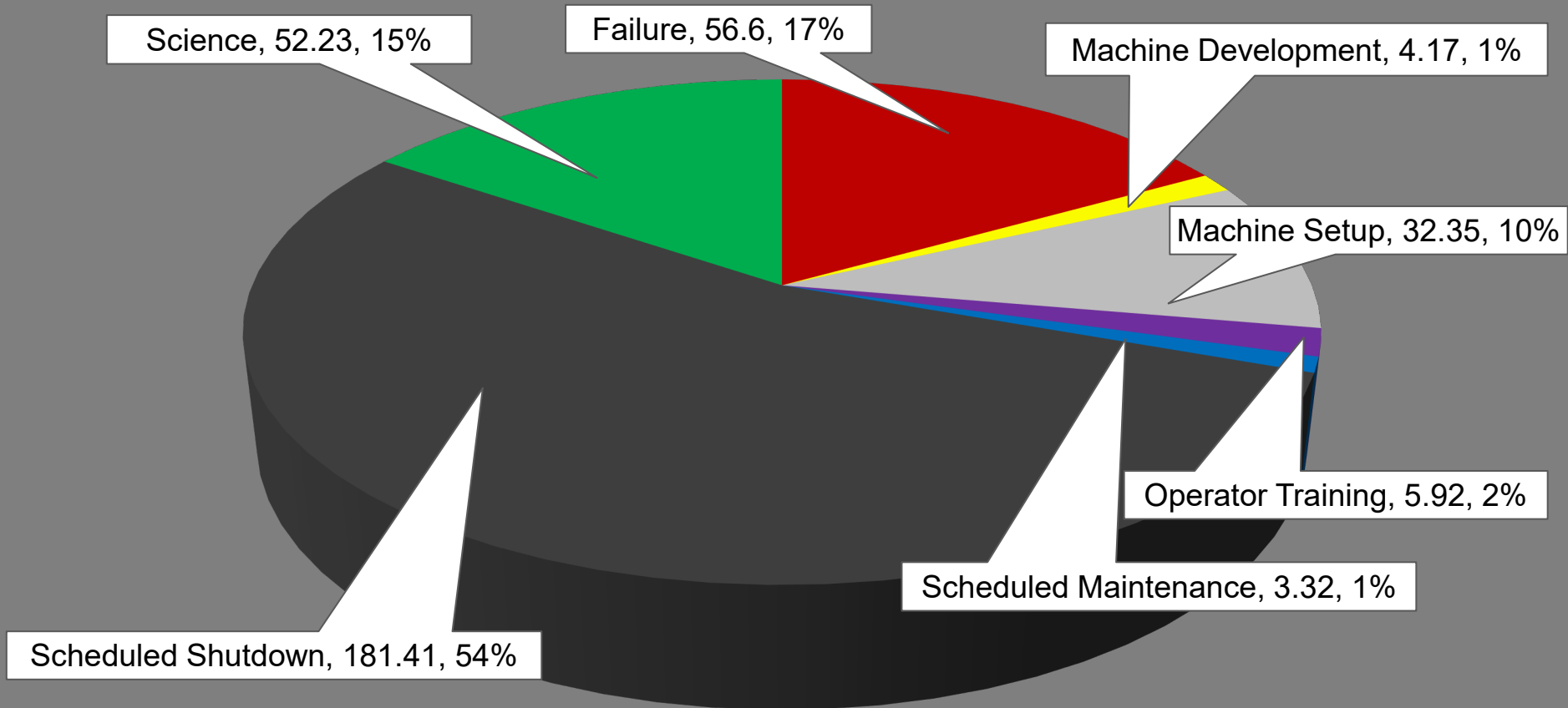
NSRL running continues, with various users running

Tandem produced Fe, I, Au for single ion modes, including some higher charge state setup. Protons in use from Linac.

Running 25-A schedule since 3 February. Schedule posted, updates to 9 May for beams & users.

NSRL Hours

Experimental Setup	Failure	Machine Development	Machine Setup
Operator Training	Scheduled Maintenance	Scheduled Shutdown	Science



Availability: 62.6%

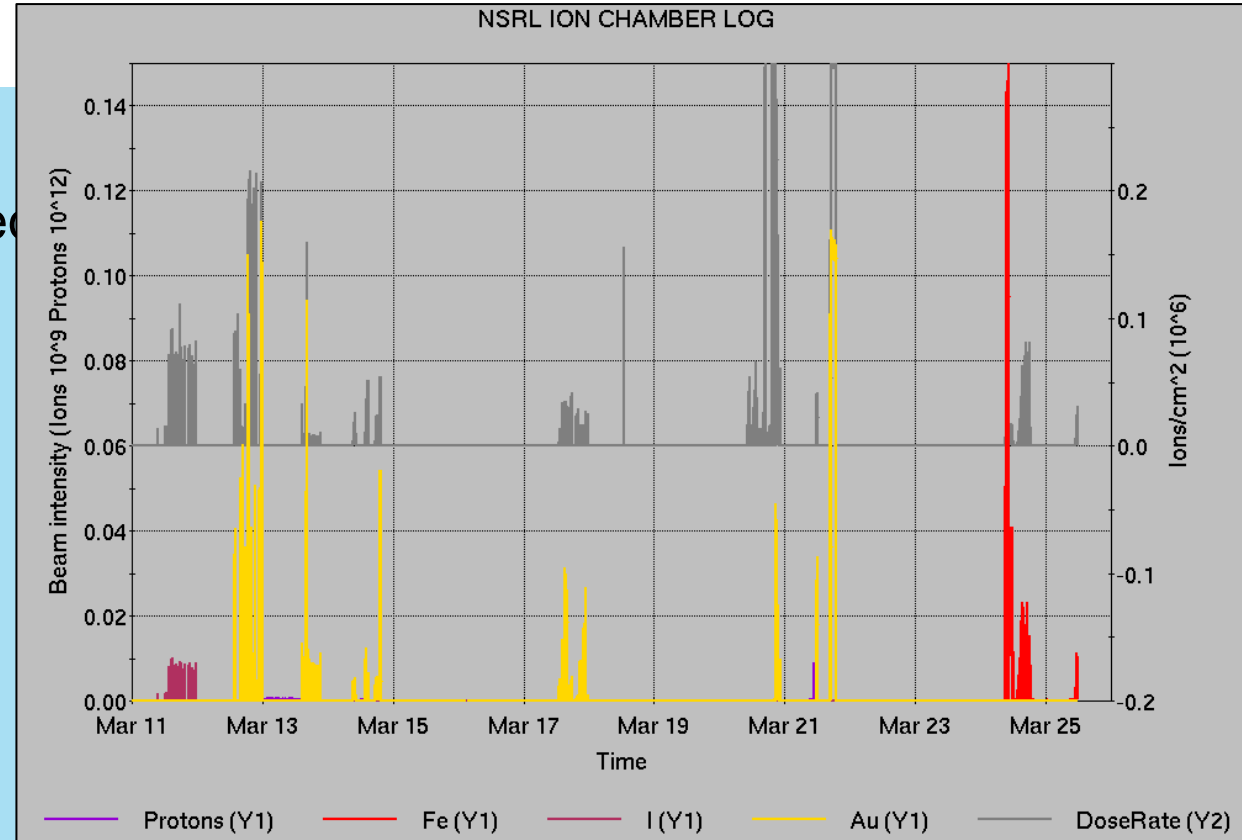
Notes from Operations

Notable failures (>1 hr)

- Tandem MP7 chain failure, entry for repairs
- Linac Mod 5 failure, internal tank repairs concluded
- Linac Mod 4 failure, replace 7835 input section
- Linac MEBT q1 PS failure, replaced
- AGS L20 septum PS failure, door interlock repaired.
- AGS RF IJ anode failure, ongoing. Multiple accesses for investigation & repair
- AGS J13 vacuum valve failure, access for limit switch repair
- AGS G10 kicker PS failure, modules retuned/retimed
- AGS G09C BLW PS noise problem, ongoing
- AGS E17 gamma-tr PS failure, board replaced

Other notes

- Various Tandem spark recovery, foil changes, retuning
- Multiple power dips
- Au Booster/AGS setup, AtR extraction concurrent with Au to NSRL, over 39 hours
- Linac Mod 7 beam loading, reduced beam current while investigating beam losses



	Linac	Tandem	EBIS	Booster	AGS	ATR	RHIC	ERL	Other	Total
Total	5 (0)	13 (17)	44 (0)	9 (4)	218 (20)	22 (3)	667 (841)	0 (0)	48 (10)	1026 (895)
RF	0 (0)	0 (0)	0 (0)	2 (0)	1 (0)	0 (0)	18 (0)	0 (0)	17 (6)	38 (6)
PS	1 (0)	4 (4)	35 (0)	4 (0)	212 (11)	14 (3)	605 (771)	0 (0)	0 (1)	875 (790)
Vacuum	0 (0)	9 (13)	8 (0)	0 (3)	0 (0)	5 (0)	20 (61)	0 (0)	12 (2)	54 (79)
Inst	1 (0)	0 (0)	0 (0)	1 (0)	1 (4)	0 (0)	11 (0)	0 (0)	5 (1)	19 (5)
Other	3 (0)	0 (0)	1 (0)	2 (1)	4 (5)	3 (0)	13 (9)	0 (0)	14 (0)	40 (15)

Reminder from Operations

- MCR beam operations continue
 - Operator/OC shifts continue for NSRL users, 2 shifts/5 days this week and next.
 - NSRL limited to Au, protons after 26 March, pending EBIS restart.
 - BLIP production continues through 4 April.
 - RHIC beam setup anticipated this week; ORC pending for RHIC.
- *Note: MCR will not (quite) be occupied continuously.*
 - No OC on duty overnight until 3/26
 - 24/7 beam operations begin 0800 Wednesday 26 March
 - Contact CAS in off hours (x2024) for urgent issues when MCR is not staffed.
- Work continues with Teams phone setup. No more Cisco (remove Cisco phones) Identify anomalies outstanding. Contact ITD, Maintenance Coordinator
- Changes? Time to update is *now*. Expect calls at all hours.
 - <http://directory.pbn.bnl.gov/>
 - CHECK AND EDIT YOUR OWN CONTACT INFO
 - https://www.cadops.bnl.gov/Operations/personnel/call_in_lists/
 - CHECK YOUR CALLIN LIST: expect contact off-hours
 - Alarm response instructions: Groups prompted for updates

Keytree notes

Remote keytree systems require a database lookup to validate and authorize distribution of keytokens. The Keytrak system's database is available for lookup functionality, but can no longer be modified in any way to add or edit qualified personnel.

Personnel affected:

- New employees, experimenters arriving after 12/1/2024 could not be enrolled in database
- Existing employees & experimenters, not already enrolled, cannot be added or modified in database

Remote keytrees affected:

- Iris scan @NSRL
- BNLID scan @AGS South gate, North Conjunction Gate
- Iris scan @RHIC STAR, sPHENIX, IP12, IP4

Keytrees NOT affected:

- BNLID scan @Linac, Booster
- BNLID scan @RHIC IP2
- MCR keytrees

Keytree notes, continued

Mitigation:

- Choose entrants that are currently enrolled to perform the work in the enclosure under Controlled Access (CA).
- Obtain CA keys from MCR for remote gate watch
- Arrange for local gate watch using other tokens for entrants.
- Arrange for Restricted Access, and allow for delays incurred to sweep areas.

CAUTION

- *Follow procedures.* Gate Watch staff will remain vigilant.
 - No “piggy-backing” – one key/token per entrant.
 - Access keys are not candy! ***Authenticated entrant retains possession.***
- Radiological Controls and the Access Controls System are not to be circumvented. This is (has been) enforced with disciplinary action (dismissal).