

# RHIC Time Meeting

Medani P. Sangroula  
Scheduling Physicist

04/22/2025



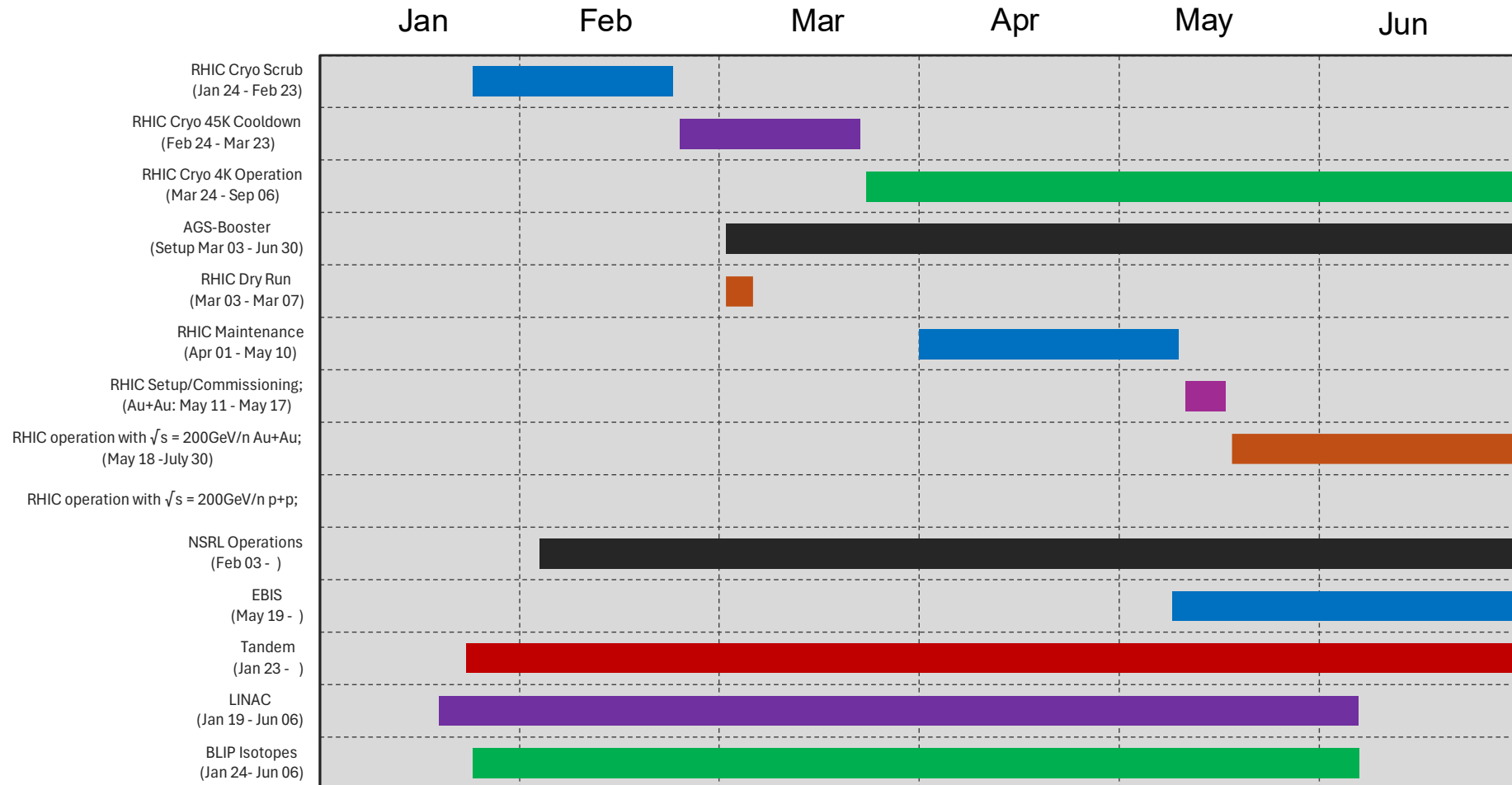
@BrookhavenLab

# RHIC Schedule

Planning basis: 4K cooldown on 3/24/25 for Au + Au and 7 weeks break on 06/30 (cryo remains on). Resume operation on 08/18 to 12/22 dependent on approved budget.

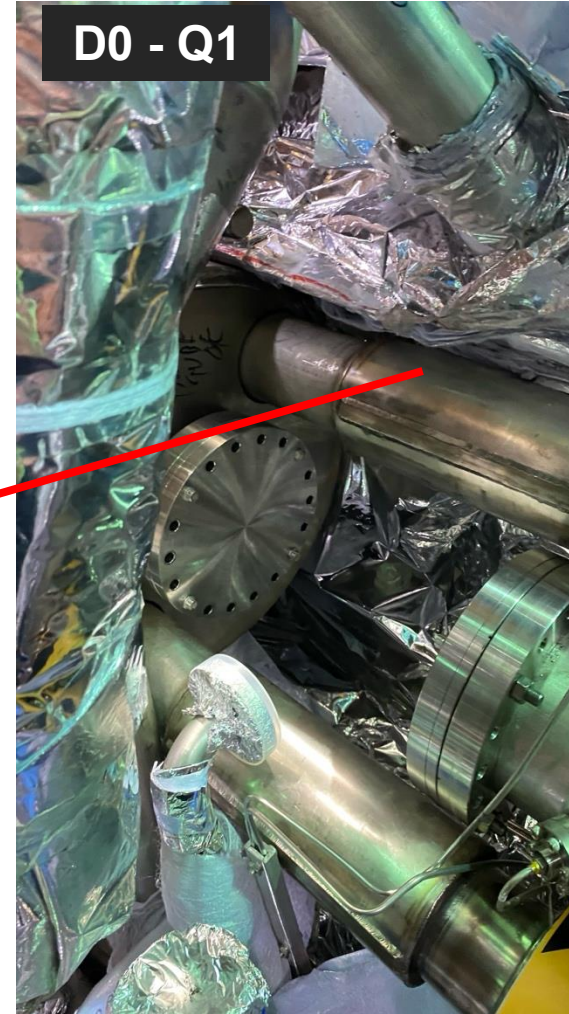
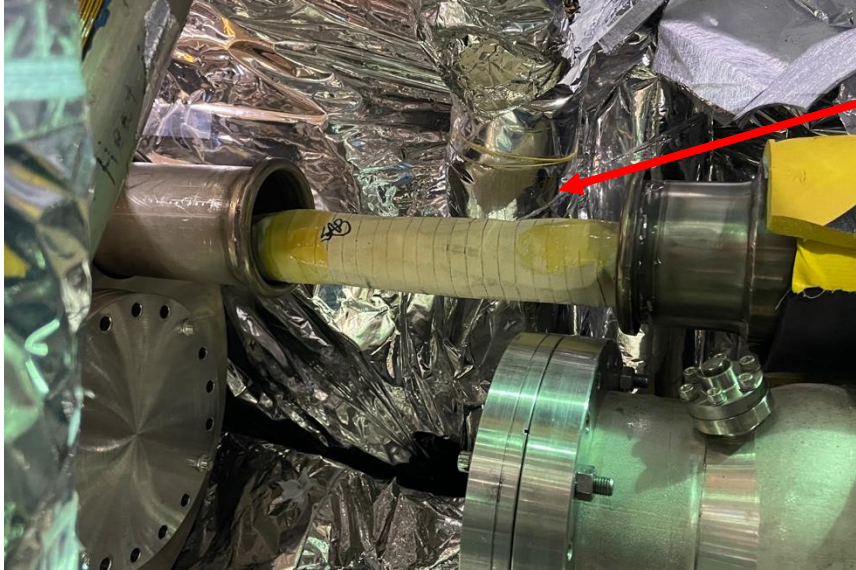
Last revision: 04/16/2025

## RHIC Operations FY 25



# RHIC Status

- RHIC is under maintenance since Apr 1.
- Its cryostat has been opened up
- Initially suspected two splice can locations for low resistance are opened.
- Unfortunately, wiring on the first splice can at D0 – Q1 looks clean.



# Booster and AGS

- Proton beam was accelerated to AGS flat top without snake (even with E17 compensation quad off)
- AI/ML related study is continuously on going.
- There are some power supply issues to deal with.

## Wednesday

- Maintenance day.
- PSEG will work on the **main feed** of the lab on Wednesday. Need to run the **alternate feed**, so no Booster.
- Tour from MIT students (ultimate goal is to install H-jets to measure the absolute polarization)

## Near term goals

- Skew quad setting scan for the low energy.
- Split/merge set up to compare emittance and polarization in the Booster.

# Miscellaneous

- Tandem is providing beams to NSRL
- EBIS upgrade is progressing well.
- No further delays. Will be available on May 19, based on current schedule.
- BLIP is continuously running for 11 days (220 MeV) since 4/21.
- Linac (OPPIS) is providing polarized proton to polarimeter (220 MeV), Booster, and NSRL.

		Monday	Tuesday	Wednesday	Thursday	Friday
		21-Apr	22-Apr	23-Apr	24-Apr	25-Apr
W E E K 17	0:00		0:00	0:00	0:00	0:00
	0:59		0:59	0:59	0:59	0:59
	1:00		1:00	1:00	1:00	1:00
	1:59		1:59	1:59	1:59	1:59
	2:00		2:00	2:00	2:00	2:00
	2:59		2:59	2:59	2:59	2:59
	3:00		3:00	3:00	3:00	3:00
	3:59		3:59	3:59	3:59	3:59
	4:00		4:00	4:00	4:00	4:00
	4:59		4:59	4:59	4:59	4:59
	5:00		5:00	5:00	5:00	5:00
	5:59		5:59	5:59	5:59	5:59
	6:00		6:00	6:00	6:00	6:00
	6:59		6:59	6:59	6:59	6:59
	7:00		7:00	7:00	7:00	7:00
	7:59		7:59	7:59	7:59	7:59
	8:00	setup	8:00	8:00	8:00	8:00
	8:59	H	8:59	8:59	8:59	8:59
	9:00		9:00	9:00	9:00	9:00
	9:59		9:59	9:59	9:59	9:59
	10:00		10:00	10:00	10:00	10:00
	10:59		10:59	10:59	10:59	10:59
	11:00		11:00	11:00	11:00	11:00
	11:59		11:59	11:59	11:59	11:59
	12:00		12:00	12:00	12:00	12:00
	12:59		12:59	12:59	12:59	12:59
	13:00		13:00	13:00	13:00	13:00
	13:59		13:59	13:59	13:59	13:59
	14:00		14:00	14:00	14:00	14:00
	14:59		14:59	14:59	14:59	14:59
	15:00		15:00	15:00	15:00	15:00
	15:59		15:59	15:59	15:59	15:59
	16:00		16:00	16:00	16:00	16:00
	16:59		16:59	16:59	16:59	16:59
	17:00		17:00	17:00	17:00	17:00
	17:59		17:59	17:59	17:59	17:59