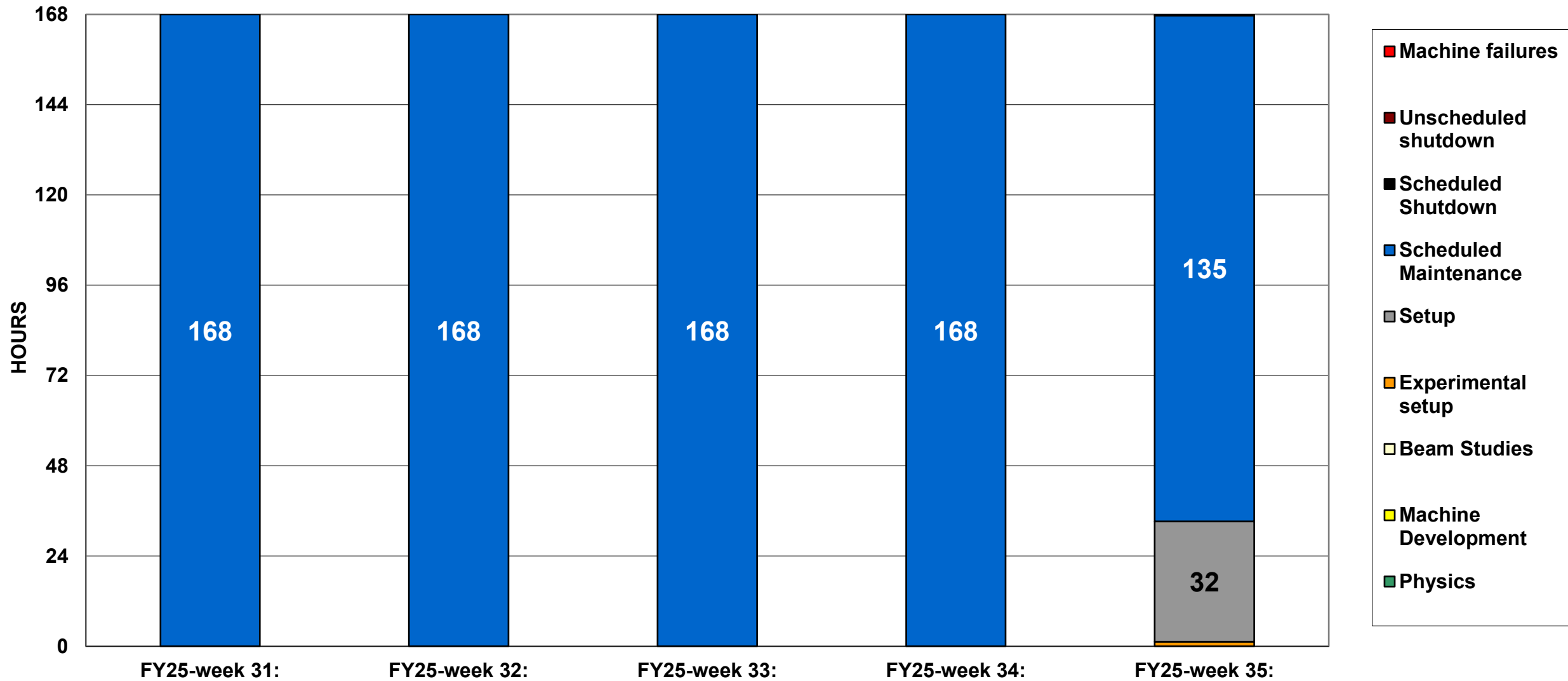
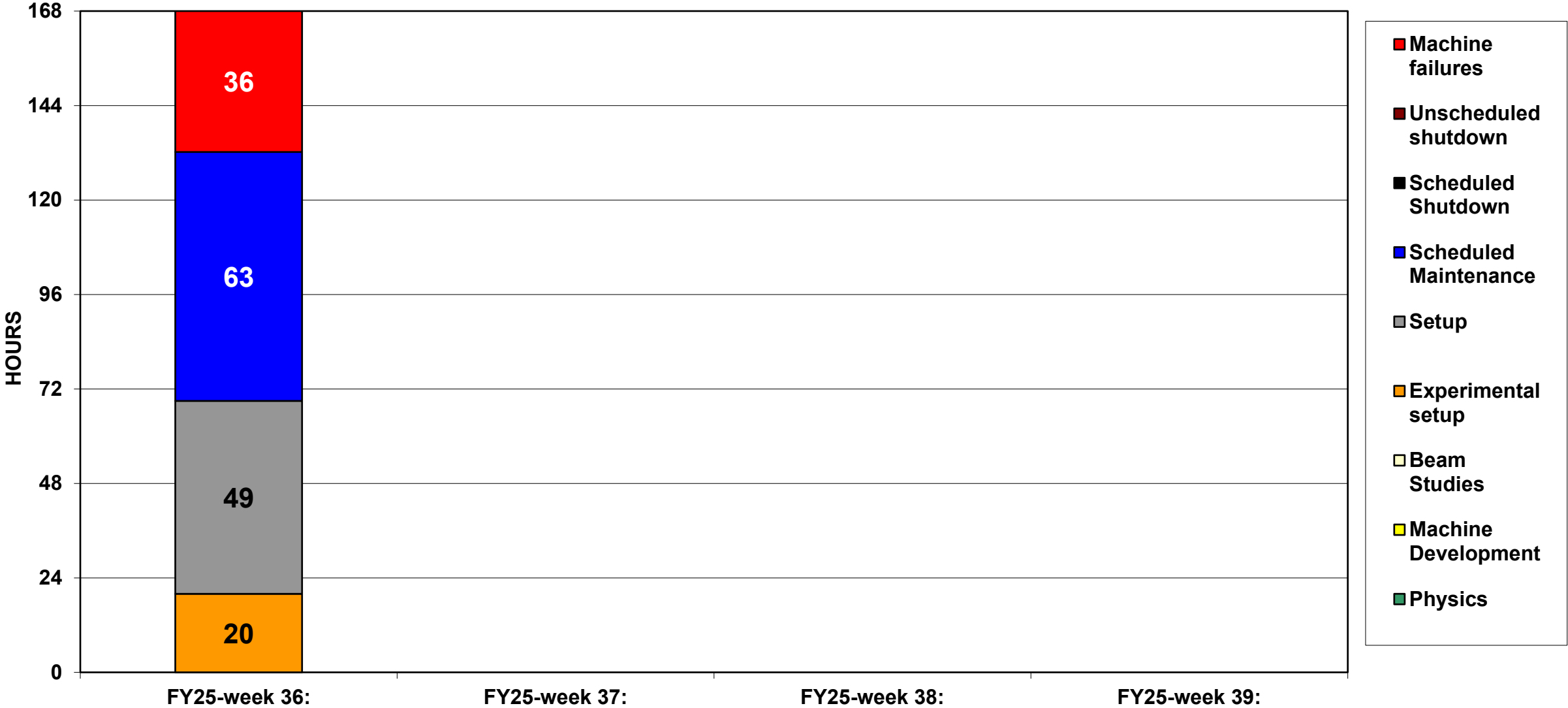


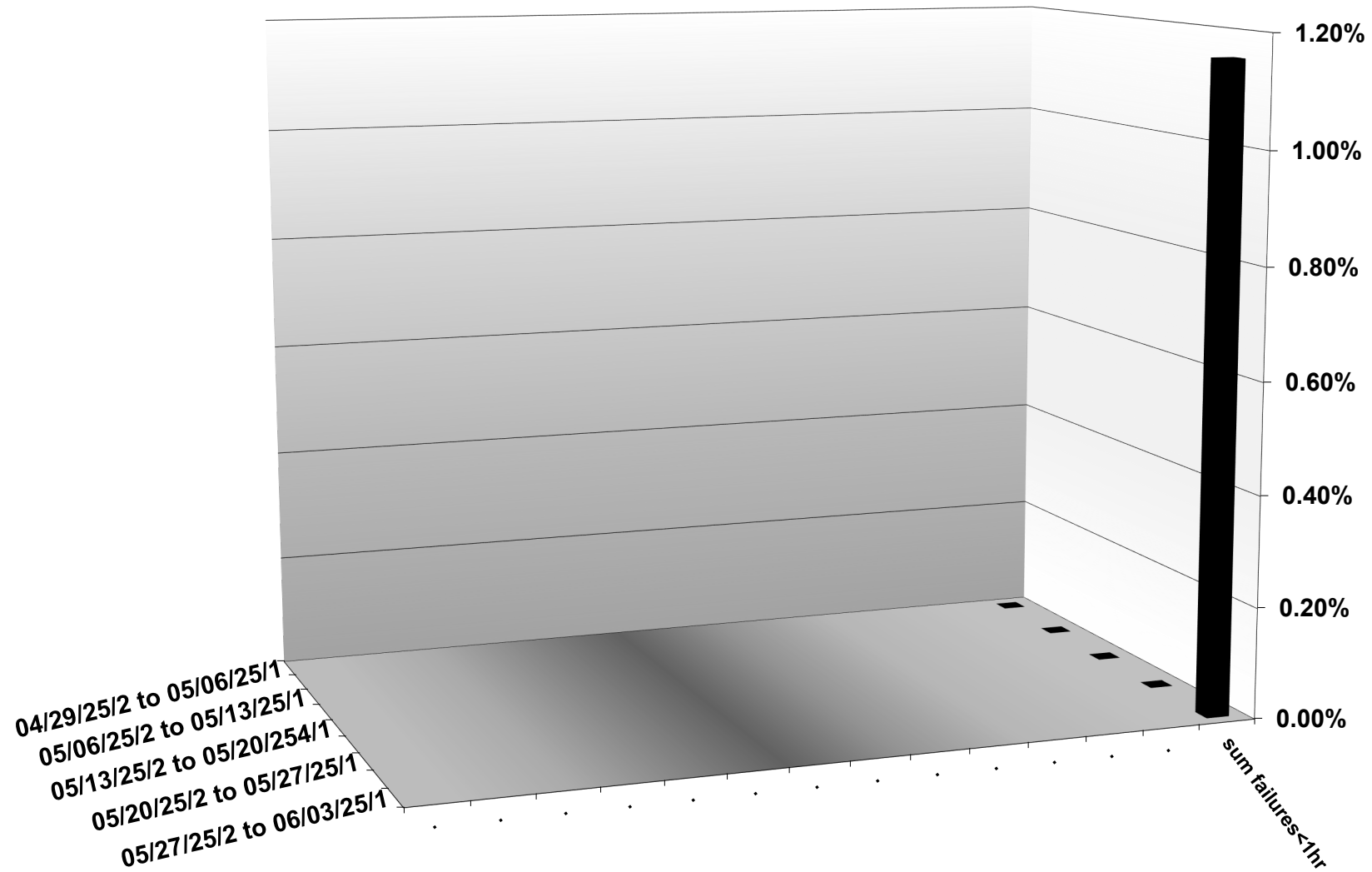
## C-AD ACTIVITY MAY 2025



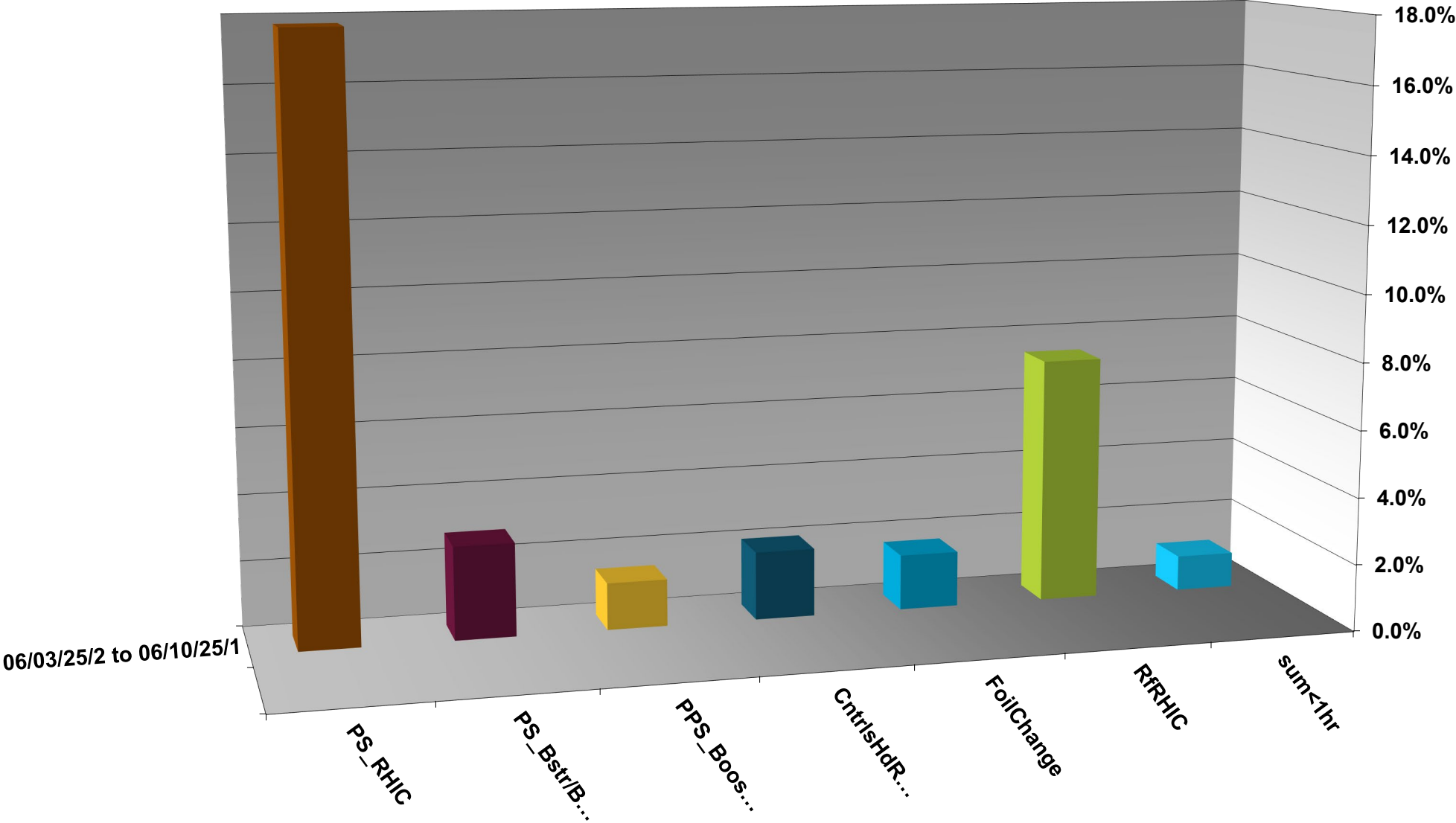
# C-AD ACTIVITY      JUNE 2025



## INTEGRATED FAILURES (GREATER THAN ONE HOUR) BY SYSTEM -- MAY 2025



INTEGRATED FAILURES (GREATER THAN ONE HOUR) BY SYSTEM - JUNE 2025



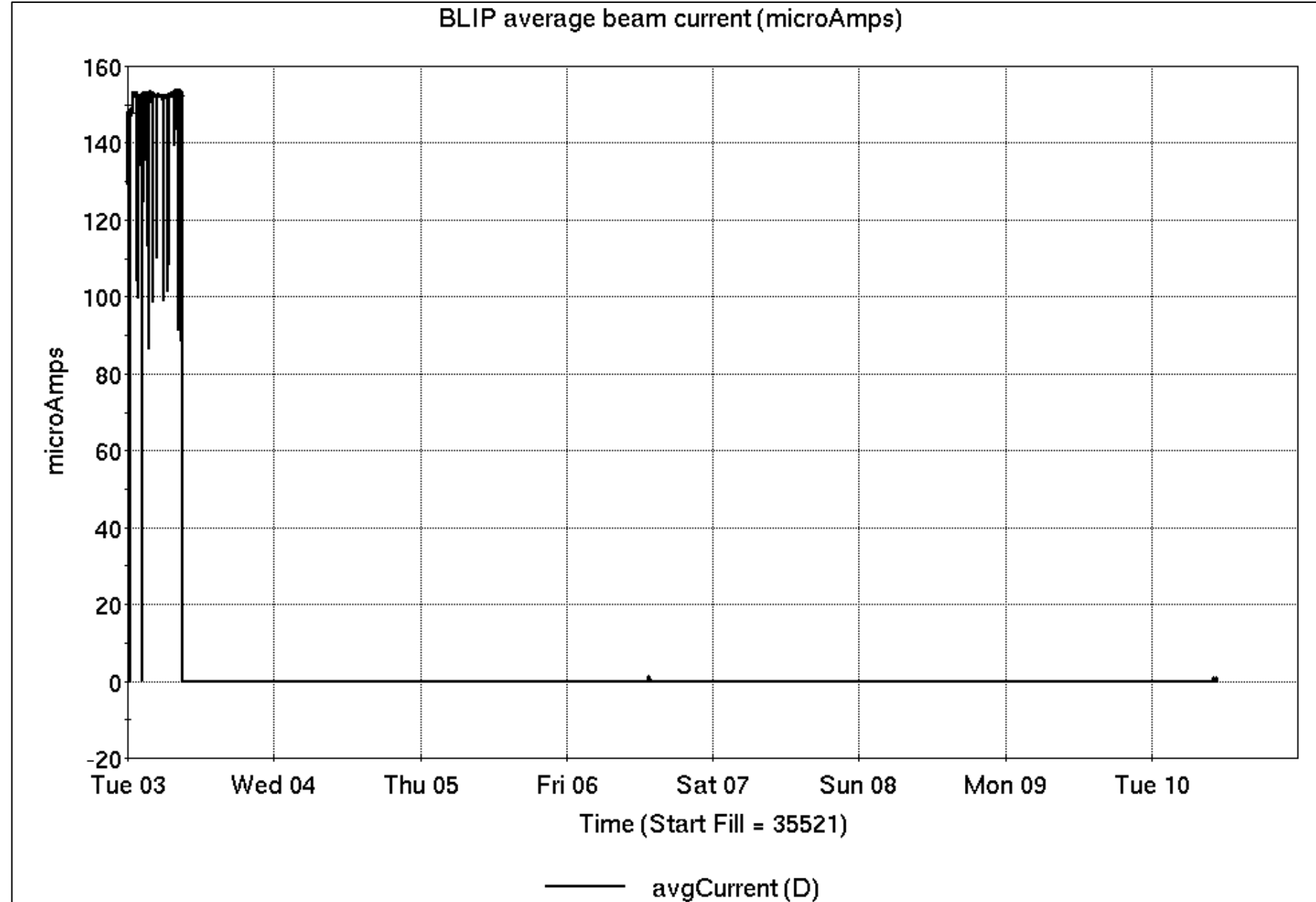
# Operations for BLIP

6/3-10/2025:

200 MeV production  
concluded early  
Tuesday;  
66 MeV setup on  
Friday.

- 1.02 hr production
- 0.32 hr setup
- no failures

Availability: 100%



# NSRL activity past week: 6/3-10/2025 (as of 0800)

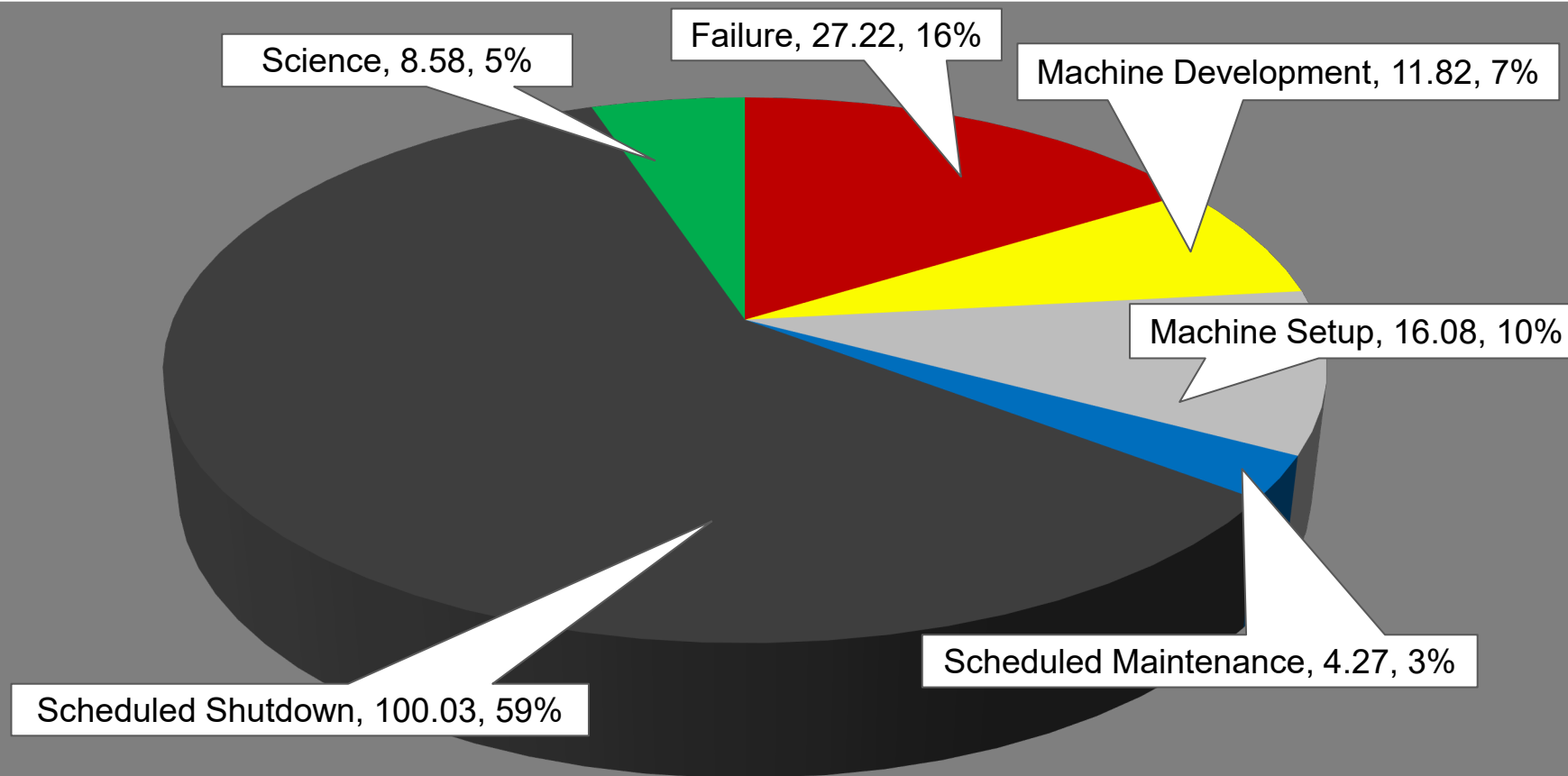
NSRL running continues. NASA biology in GCR mode, with some other user time and beam development for upcoming schedule.

No Tandem ions; Linac protons, 8 EBIS ions (He, O, Si, Fe, Nb, Ag, Ta, Bi) delivered to NSRL.

Running 25-A schedule since 3 February. Schedule posted, **updates to 27 June** for beams & users. **25-C schedule yet to be published for July-September.**

## NSRL Hours

Experimental Setup	Failure	Machine Development	Machine Setup
Operator Training	Scheduled Maintenance	Scheduled Shutdown	Science



**Availability: 57.3%**

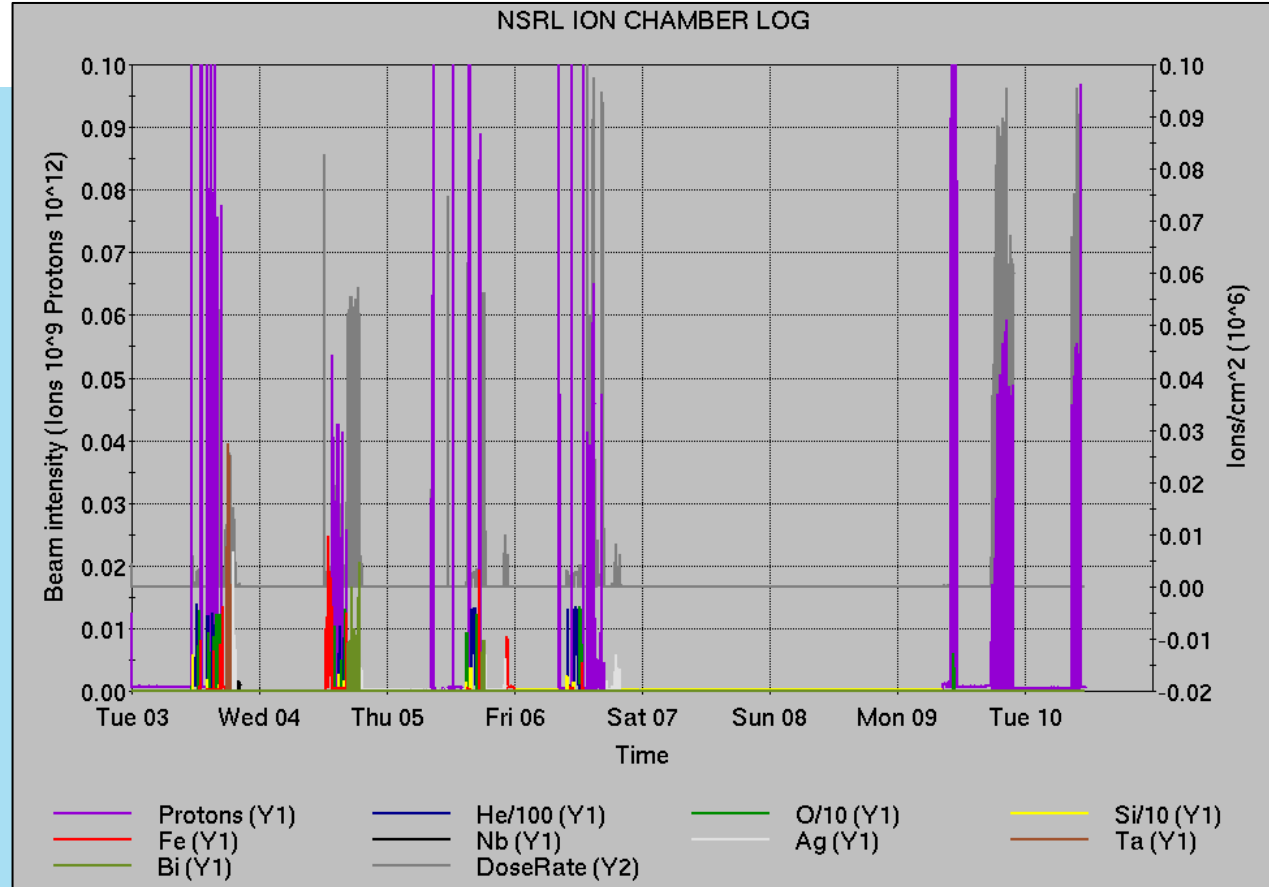
# Notes from Operations

## Notable failures (>1 hr)

- EBIS Collector PS failures, ongoing
- Booster C7 injection kicker PS failure, resistor and regulator board replaced
- NSRL vacuum valve failure, compressor air restored
- Booster MMPS trips (4x) ground fault indicators
- Linac OPPIS source intensity low, grid reset
- Additional PS work in Blue, Yellow after initial setup/testing/hysteresis
- Controls failure, cfe-4b-rtdl reset and recovery
- Blue QLI at park (2x), Main Quad PS regulator reset, dsp card replaced
- yo5-qgt PS polarity failure, wiring repaired
- YA1 RF failure, access to recover QE1
- YA2 RF failure, cavity tuner issues
- Yellow QLI; dmain PS failure at flattop, gate drive board replaced
- Yellow qtrim PS error, regulator card replaced

## Other notes

- Some corrector PS failures, access/repairs deferred
- Various Tandem tuning, access, foil changes



Setup	Filter	Linac	Tandem	EBIS	Booster	AGS	ATR	RHIC	ERL	Other	Total	Help
Total		6 (2)	15 (37)	81 (0)	2 (7)	2 (9)	7 (1)	23 (14)	0 (0)	31 (10)	167 (80)	
RF		2 (0)	0 (0)	0 (0)	0 (1)	0 (0)	0 (0)	3 (0)	0 (0)	12 (6)	17 (7)	
PS		2 (0)	13 (5)	71 (0)	0 (0)	1 (2)	0 (1)	14 (12)	0 (0)	0 (1)	101 (21)	
Vacuum		0 (0)	2 (32)	2 (0)	0 (4)	0 (0)	0 (0)	0 (2)	0 (0)	11 (2)	15 (40)	
Inst		0 (0)	0 (0)	0 (0)	0 (1)	0 (2)	7 (0)	5 (0)	0 (0)	4 (1)	16 (4)	
Other		2 (2)	0 (0)	8 (0)	2 (1)	1 (5)	0 (0)	1 (0)	0 (0)	4 (0)	18 (8)	

# Reminder from Operations

- MCR beam operations continue
  - Operator/OC shifts continue for NSRL biology, 2 shifts/7 days this week.
    - No ions from Tandem; Linac protons as required; Ion beams from EBIS pending repair.
  - BLIP production continues 10-11 June; resumes 16 June.
  - RHIC experiment setup with beam continues; additional system startups, beam tuning, luminosity ramp-up pending
    - Tandem continues to provide Au31 for RHIC
  - AGS Polarized proton setup, other studies continue behind stores
  - *MCR on duty 24/7.*
- Changes? Time to update is *now*. Expect calls at all hours.
  - Alarm response instructions: Groups prompted for updates
  - <http://directory.pbn.bnl.gov/>
    - CHECK AND EDIT YOUR OWN CONTACT INFO
  - [https://www.cadops.bnl.gov/Operations/personnel/call\\_in\\_lists/](https://www.cadops.bnl.gov/Operations/personnel/call_in_lists/)
    - CHECK YOUR CALLIN LIST: expect contact off-hours



# Availability: RHIC Run-25

