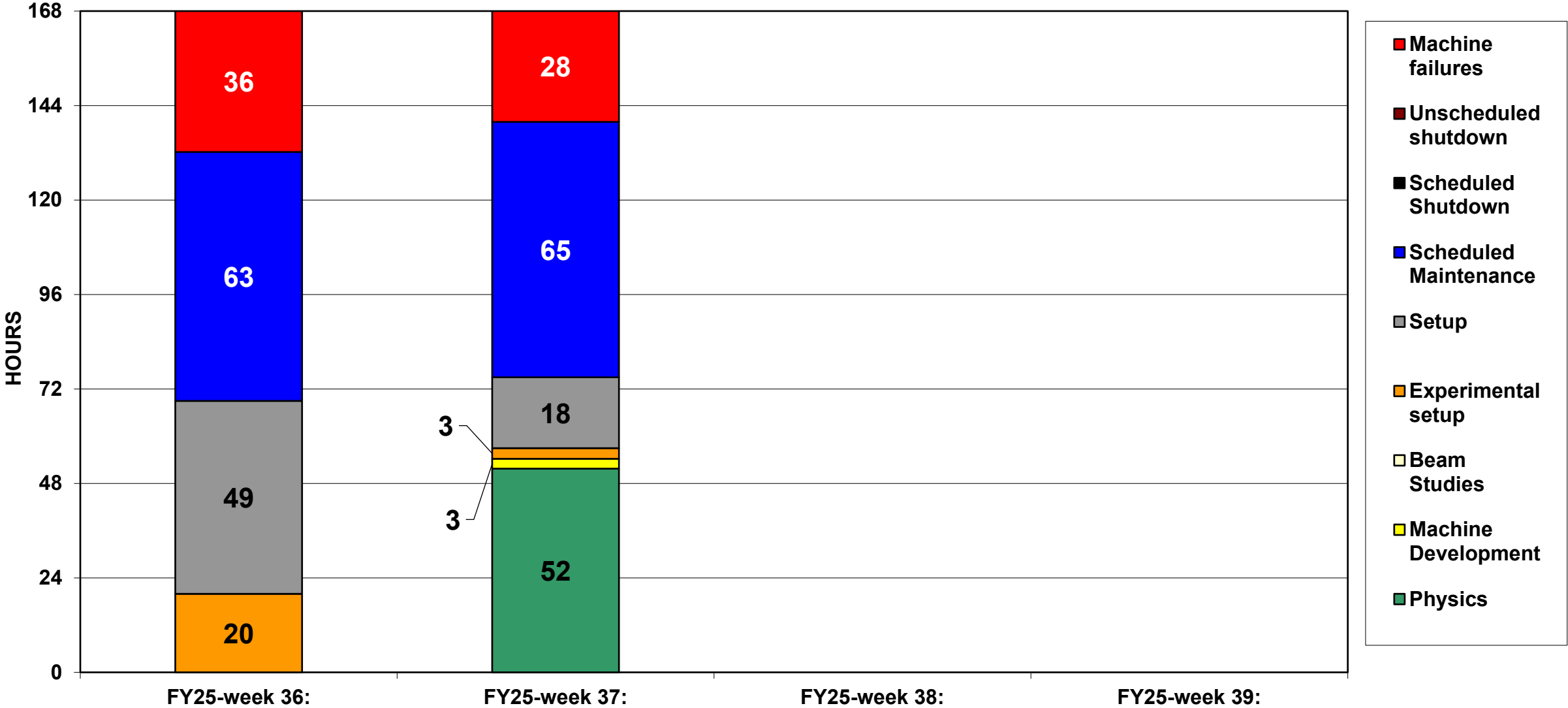
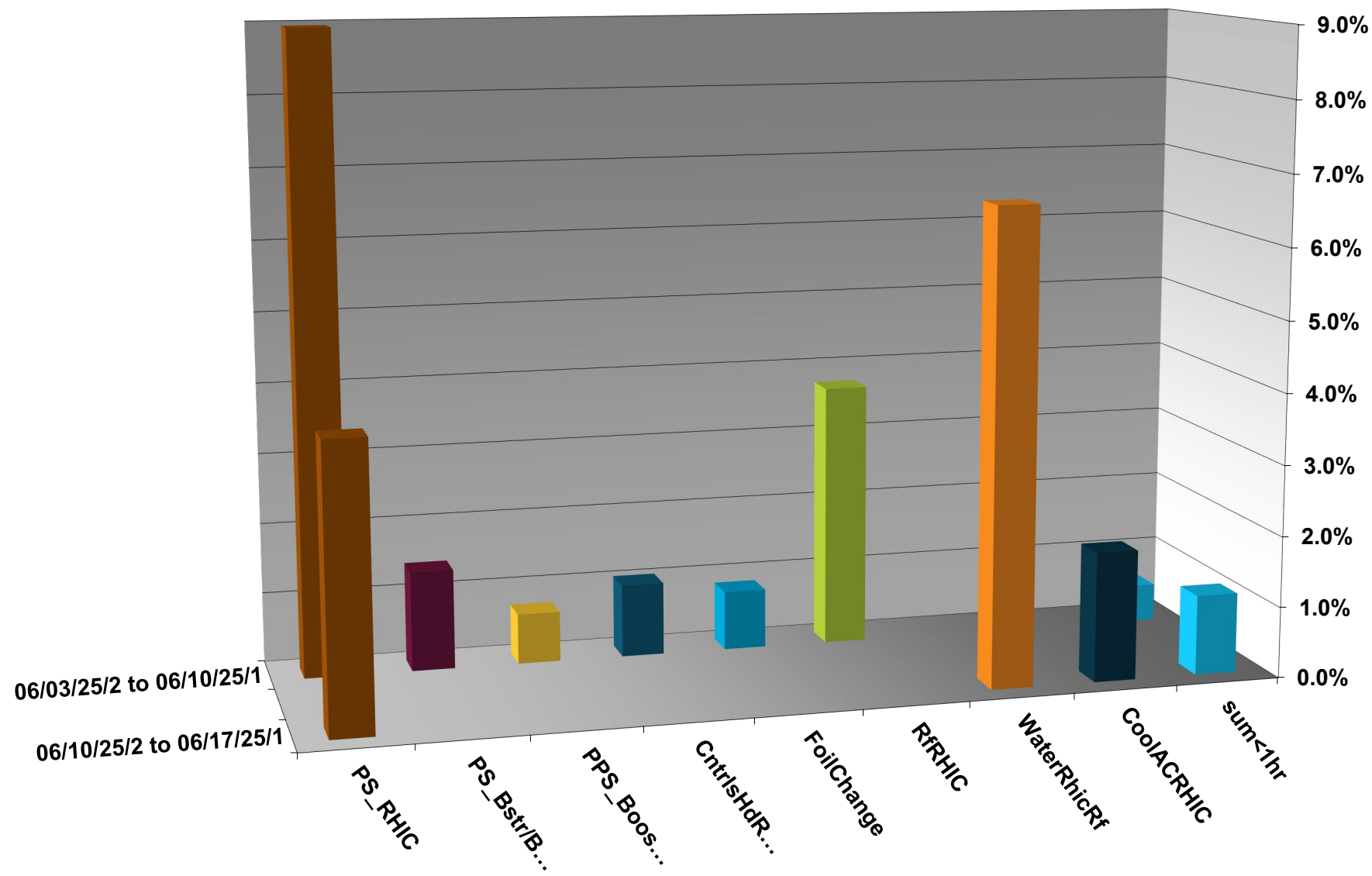


# C-AD ACTIVITY      JUNE 2025



## INTEGRATED FAILURES (GREATER THAN ONE HOUR) BY SYSTEM - JUNE 2025



# 6/10-17/2025:

- 39.60 hr production
- 4.32 hr setup
- 2.88 hr failures

BLIP average beam current (microAmps)

microAmps

Time (Start Fill = 35584)

avgCurrent (D)

# NSRL activity past week: 6/10-17/2025 (as of 0800)

NSRL running continues. NASA biology in GCR mode, with some other user time and beam development for upcoming schedule.

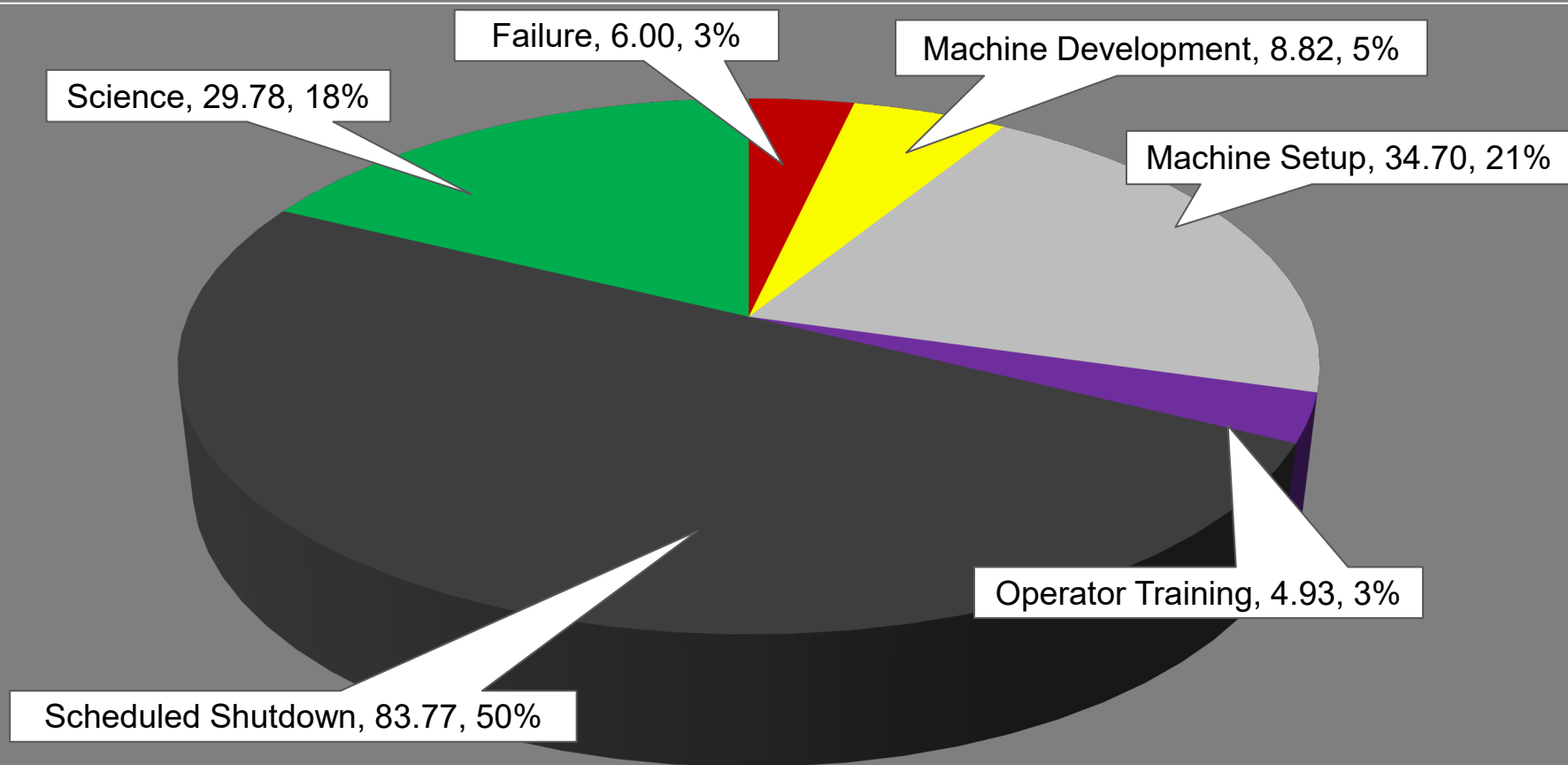
No Tandem ions; Linac protons, 7 EBIS ions (He, C, O, Si, Fe, Ta, Bi) delivered to NSRL.

Running 25-A schedule; Run concludes 27 June.

Run 25-C follows on 30 June; **25-C schedule posted through 1 October.**

## NSRL Hours

|                    |                       |                     |               |
|--------------------|-----------------------|---------------------|---------------|
| Experimental Setup | Failure               | Machine Development | Machine Setup |
| Operator Training  | Scheduled Maintenance | Scheduled Shutdown  | Science       |



**Availability: 92.9%**

# Notes from Operations

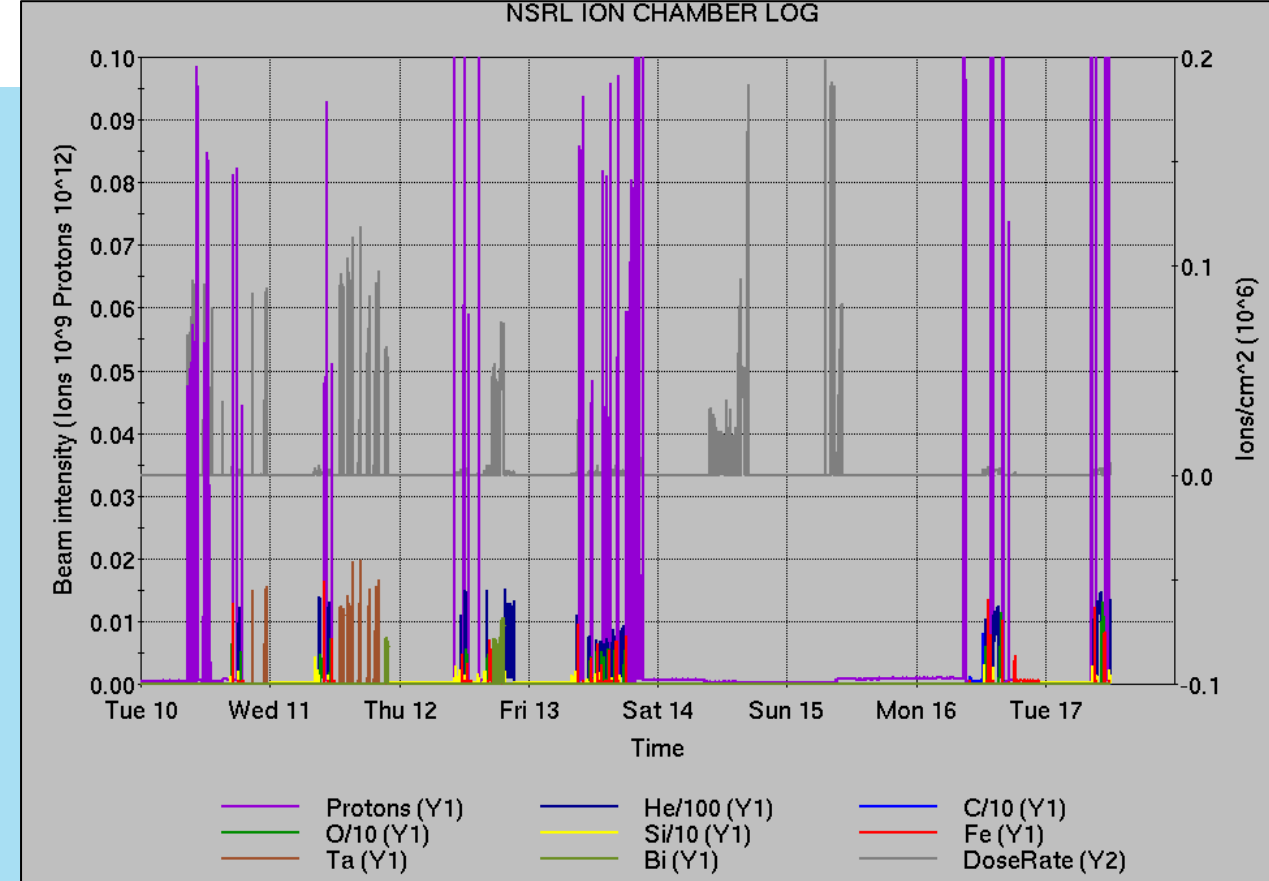
## Notable failures (>1 hr)

- 56 MHz SRF water cooling, blowdown system failure; cryo warmup required.
- y08-tq4-ps failures (4x), 1008B thermal issues
- Experimental access for detector work
- EBIS Collector PS failures (17x), ongoing
- EBIS drift tube failure, Trek PS replaced
- Linac Mod 3 failure, 7835 tube replaced

## Other notes

- AGS G09C BLW PS remote control total loss, ongoing
- Beam abort, bi5-tq4-ps trip
- YS5 cavity trip during ramp; reseated connector for tuner
- yo8-th8-ps replaced
- Yellow abort kicker trip, trigger fault undiagnosed
- AGS access, RF station D PA replaced
- 1002 cooling tower failure; fan VFD overcurrent reset.
- Blue QP switch air flow fault, bypassed/ongoing
- BS4 RF trip, reset locally
- HVAC issues 1008B, 1012A, 1004B, 1006B, ...various repairs or mitigations
- AGS RF station B not following reference; low-level PPCs reset
- ACS failure, 1012 remote keytree inoperable, ongoing
- Beam abort, g5-lm9.2 loss early ramp; injection gap cleaning installed
- Various injector PS trips, resets, tuning
- Various Tandem tuning, access, foil changes

**7 failures behind maintenance. 97.78→17.60 hr**



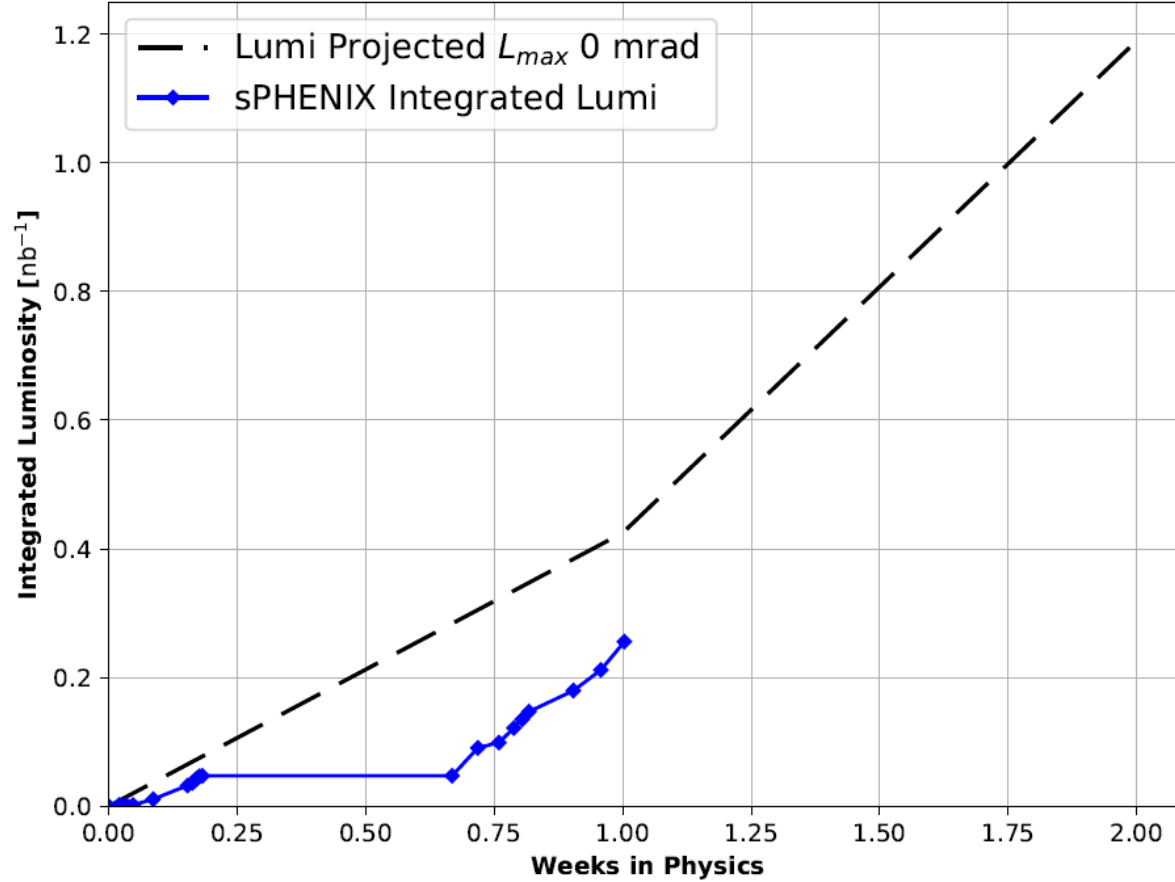
| Setup  | Filter   |           |          |          |          |          |            |          |            | Help       |
|--------|----------|-----------|----------|----------|----------|----------|------------|----------|------------|------------|
|        | Linac    | Tandem    | EBIS     | Booster  | AGS      | ATR      | RHIC       | ERL      | Other      | Total      |
| Total  | 2<br>(2) | 5<br>(40) | 3<br>(9) | 1<br>(7) | 7<br>(9) | 2<br>(1) | 27<br>(14) | 0<br>(0) | 25<br>(10) | 72<br>(92) |
| RF     | 2<br>(0) | 0<br>(0)  | 0<br>(0) | 0<br>(1) | 2<br>(0) | 0<br>(0) | 3<br>(0)   | 0<br>(0) | 4<br>(6)   | 11<br>(7)  |
| PS     | 0<br>(0) | 5<br>(6)  | 0<br>(9) | 0<br>(0) | 4<br>(2) | 1<br>(1) | 11<br>(12) | 0<br>(0) | 0<br>(1)   | 21<br>(31) |
| Vacuum | 0<br>(0) | 0<br>(34) | 1<br>(0) | 0<br>(4) | 0<br>(0) | 0<br>(0) | 2<br>(2)   | 0<br>(0) | 11<br>(2)  | 14<br>(42) |
| Inst   | 0<br>(0) | 0<br>(0)  | 0<br>(0) | 0<br>(1) | 0<br>(2) | 1<br>(0) | 4<br>(0)   | 0<br>(0) | 4<br>(1)   | 9<br>(4)   |
| Other  | 0<br>(2) | 0<br>(0)  | 2<br>(0) | 1<br>(1) | 1<br>(5) | 0<br>(0) | 7<br>(0)   | 0<br>(0) | 6<br>(0)   | 17<br>(8)  |

# Reminder from Operations

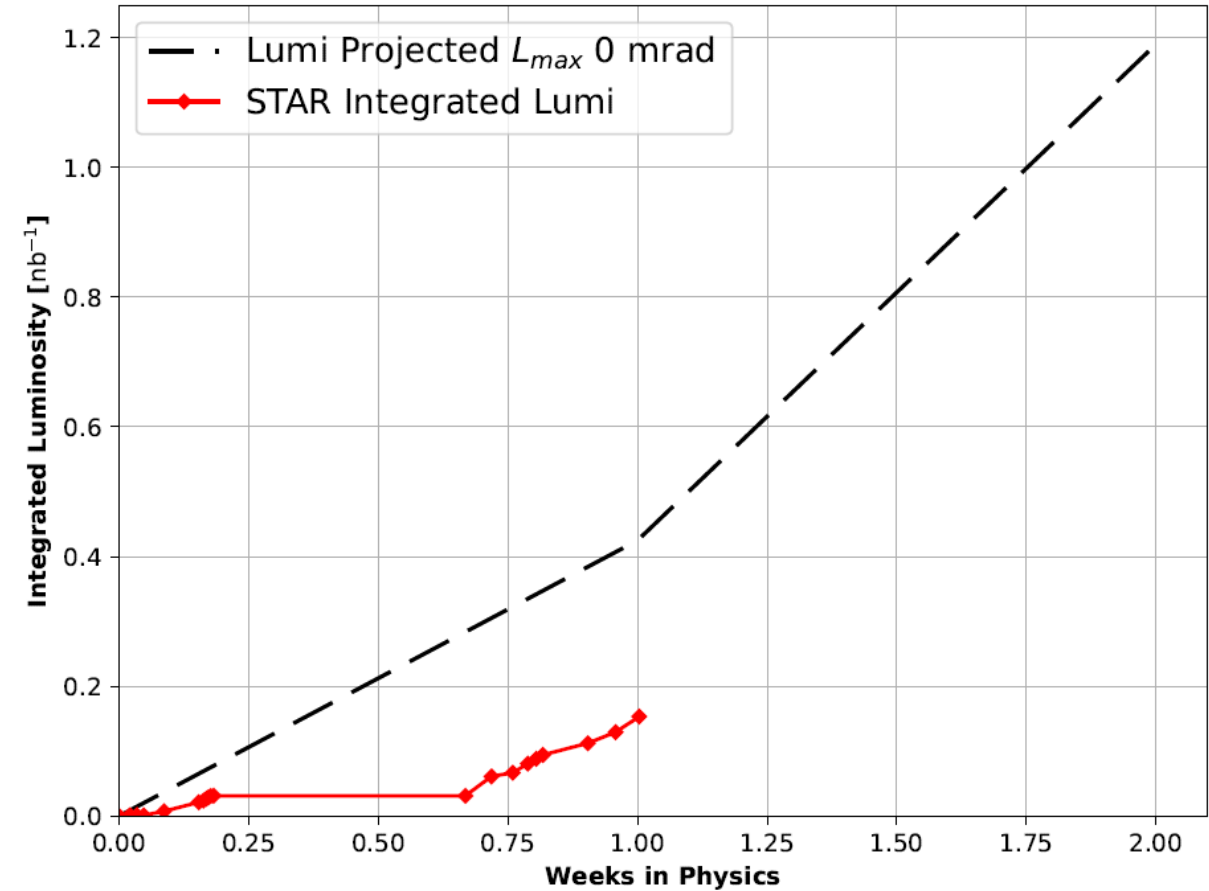
- MCR beam operations continue
  - RHIC physics running continues with more system startups, beam tuning, luminosity ramp-up
    - Tandem remains sole provider of Au31 for RHIC
  - Operator/OC shifts continue for NSRL biology, 1 shift/5 days this week and next.
    - No ions from Tandem; Linac protons as required through 27 June; Ion beams from EBIS pending development.
  - BLIP production continues until 27 June.
  - AGS Polarized proton setup, other studies to continue behind stores as time allows.
  - MCR on duty 24/7.
- Changes? Time to update is *now*. Expect calls at all hours.
  - Alarm response instructions: Groups prompted for updates
  - <http://directory.pbn.bnl.gov/>
    - CHECK AND EDIT YOUR OWN CONTACT INFO
  - [https://www.cadops.bnl.gov/Operations/personnel/call\\_in\\_lists/](https://www.cadops.bnl.gov/Operations/personnel/call_in_lists/)
    - CHECK YOUR CALLIN LIST: expect contact off-hours

# Preliminary delivered Luminosity data for RHIC

**FY25 Delivered Luminosity to sPHENIX**  
100 GeV Au x 100 GeV Au



**FY25 Delivered Luminosity to STAR**  
100 GeV Au x 100 GeV Au



# Availability: RHIC Run-25

