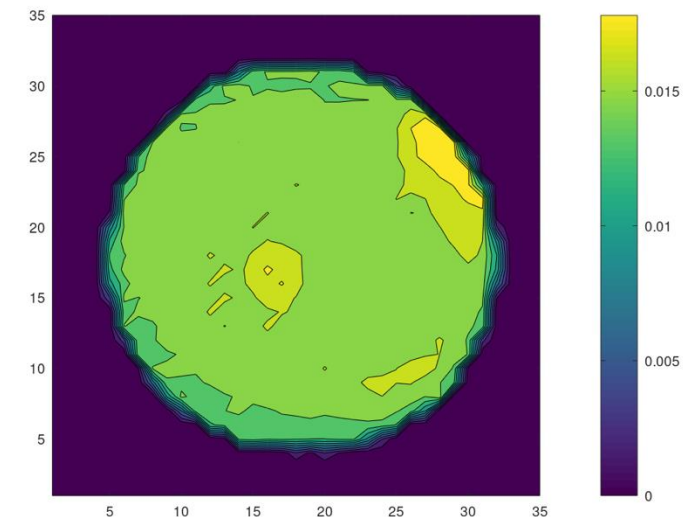
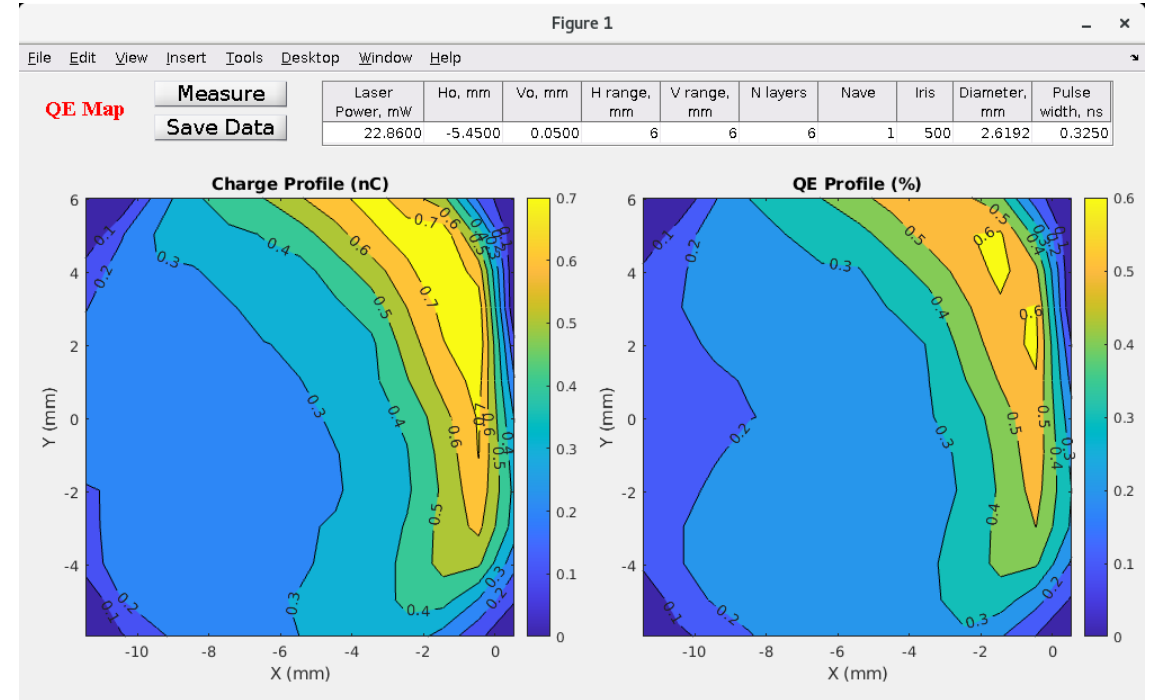


CeC status – 6/24/25

CeC started operation after He conditioning

- The cathode we inserted had highest QE (~ 3.5%) in the batch but was not so good in QE uniformity.
- After initial drop in QE (from 3.5% - 0.3 %) during the cathode insertion, the QE has been stable without any degradation over the week.
- We plan to move in the next cathode with more uniform distribution during next access.



Cavities

There are issues with RF/SRF cavities which need to be solved.

- 500 MHz buncher cavity had vacuum excursions while ramping in voltage which tripped the MPS. Continual voltage scan has been done to clean up the cavity.
- 704 MHz linac cavity observed large oscillation in frequency detuning with 0.5 - 1 Hz periods, which is believed to be thermo-acoustic oscillation in Helium bath.
- Cryo and RF group have been working together to bring 704 back online

