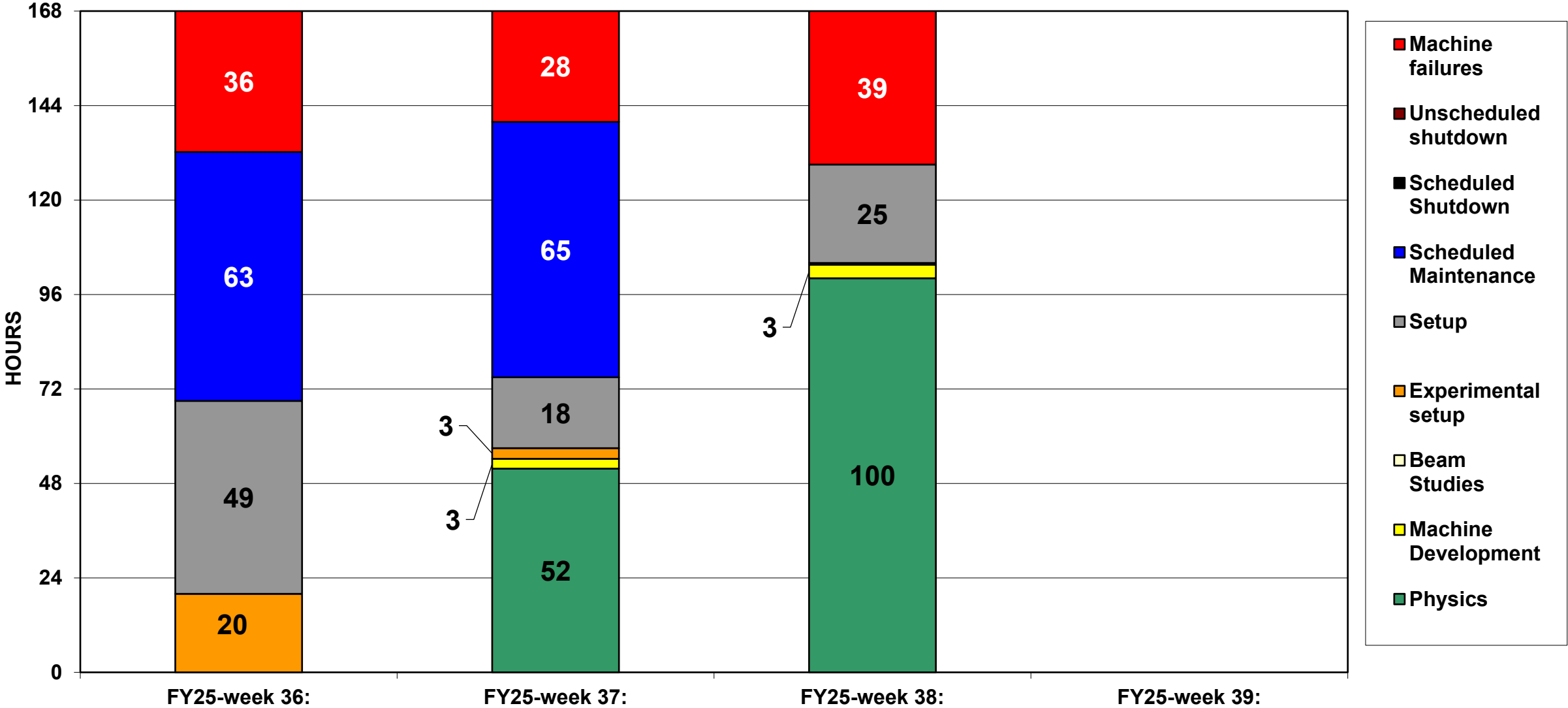
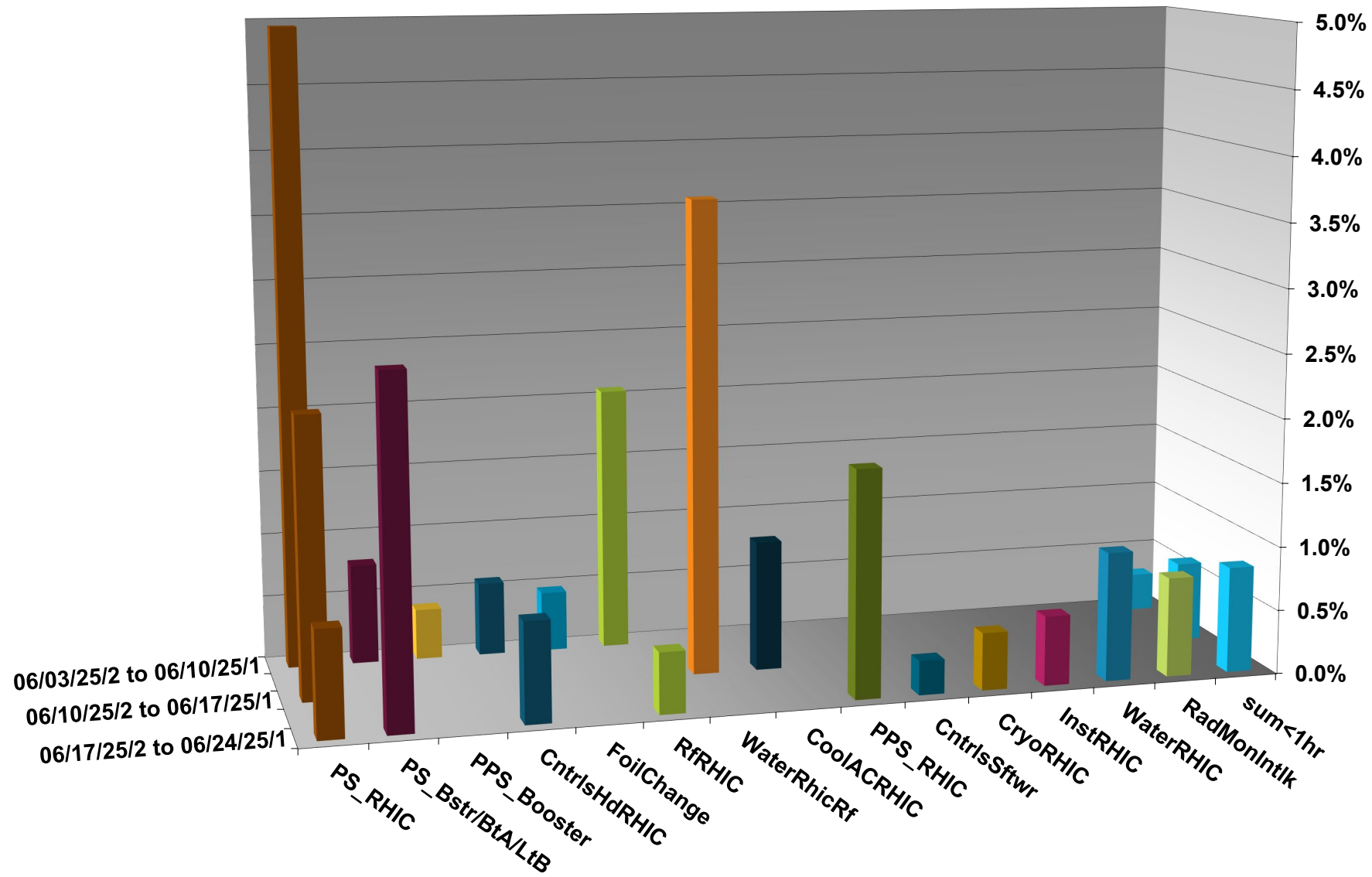


C-AD ACTIVITY JUNE 2025



INTEGRATED FAILURES (GREATER THAN ONE HOUR) BY SYSTEM - JUNE 2025



Operations for BLIP

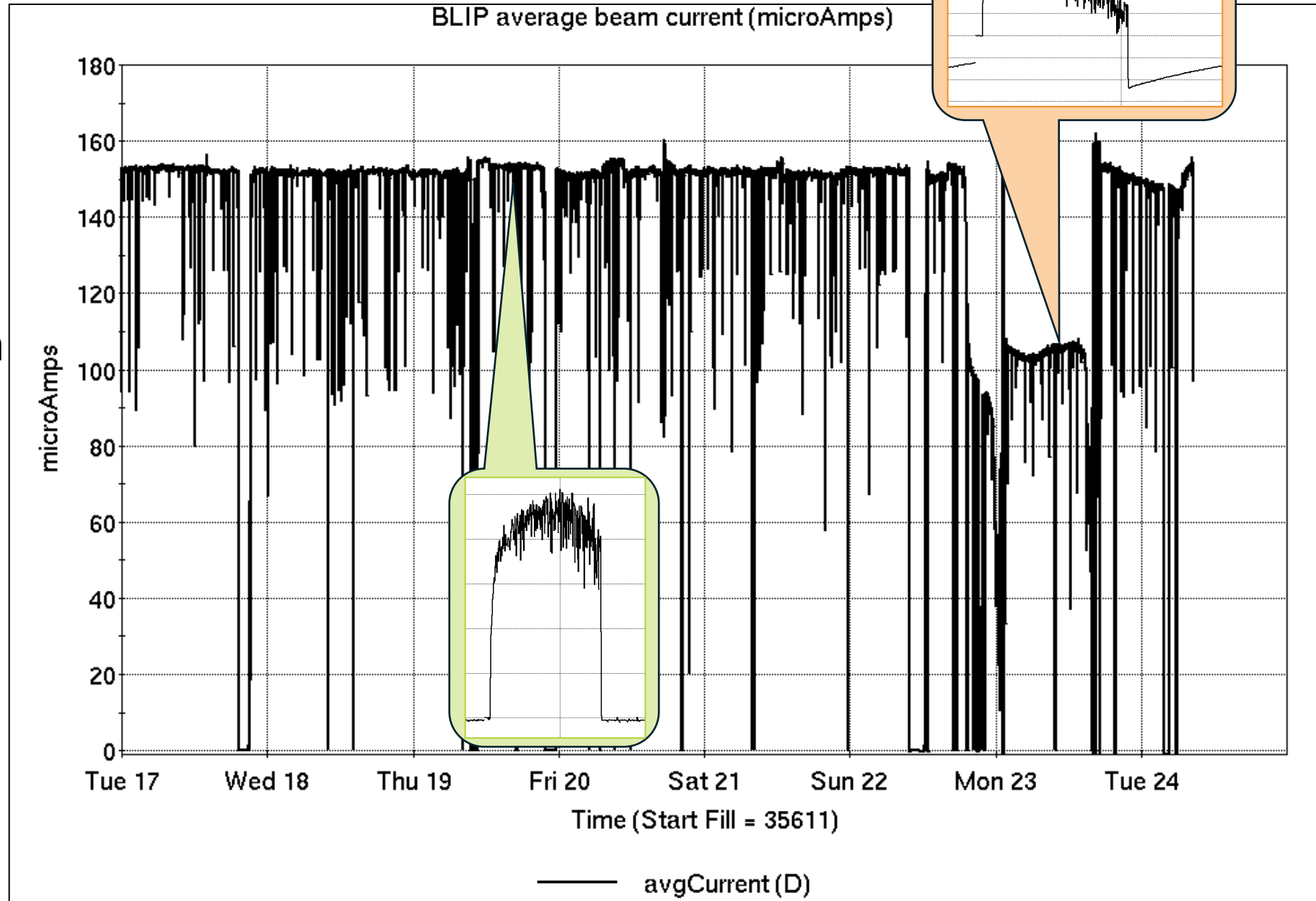
6/17-24/2025:

200 MeV production continued all week.

- 156.2 hr production
- 11.8 hr failures

Availability: 93.0%

note current transformer issues affecting logged data



NSRL activity past week: 6/17-24/2025 (as of 0800)

NSRL running continues. NASA biology in GCR mode, with other user time and beam development.

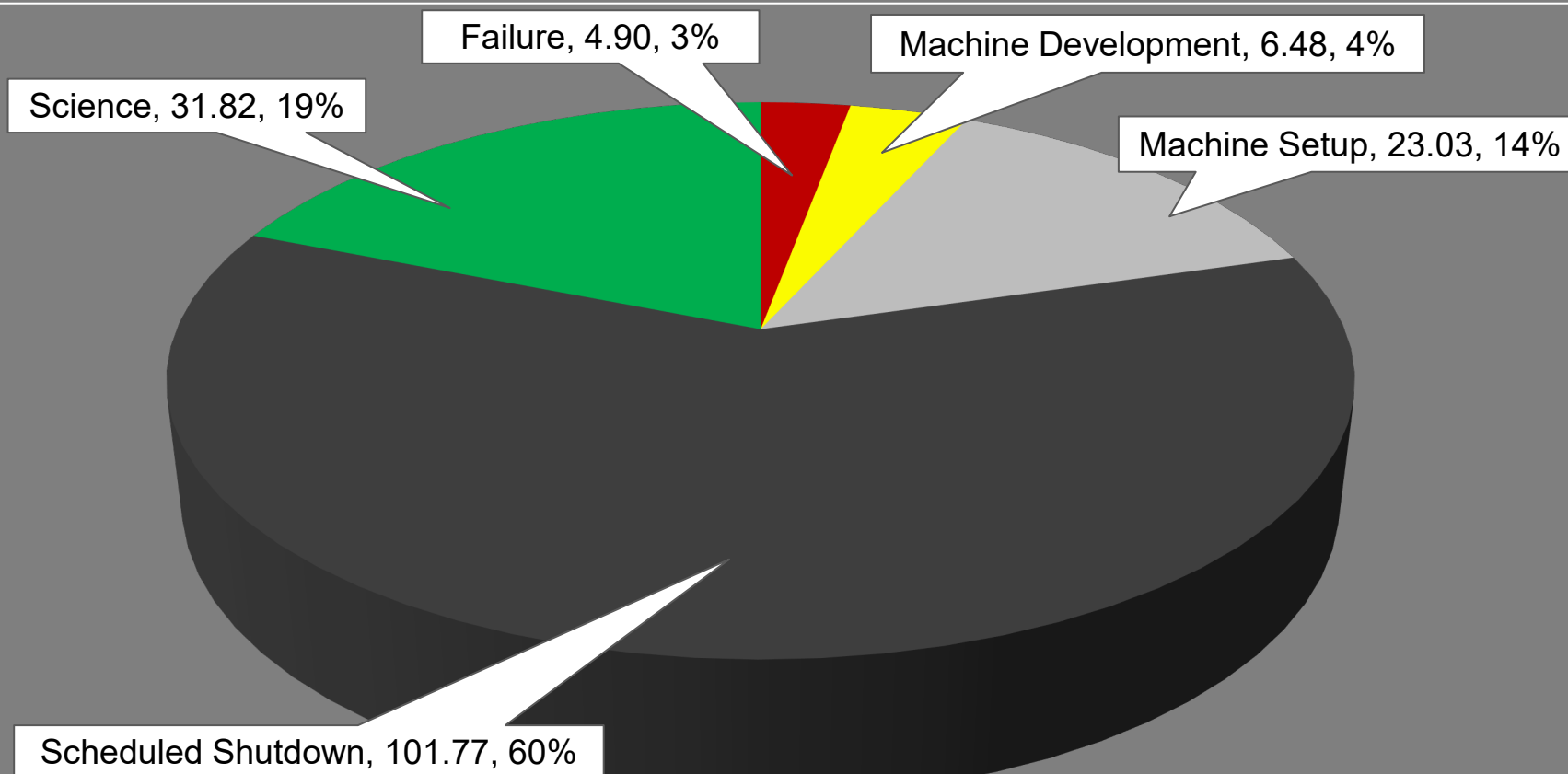
No Tandem ions; Linac protons, 11 EBIS ions (He, C, Ne, O, Si, Ar, Ti, Fe, Tb, Ta, Bi) delivered to NSRL.

Running 25-A schedule; Run concludes 27 June.

Run 25-C follows on 30 June; 25-C schedule posted through 1 October.

NSRL Hours

Experimental Setup	Failure	Machine Development	Machine Setup
Operator Training	Scheduled Maintenance	Scheduled Shutdown	Science



Availability: 92.6%

Notes from Operations

Notable failures (>1 hr)

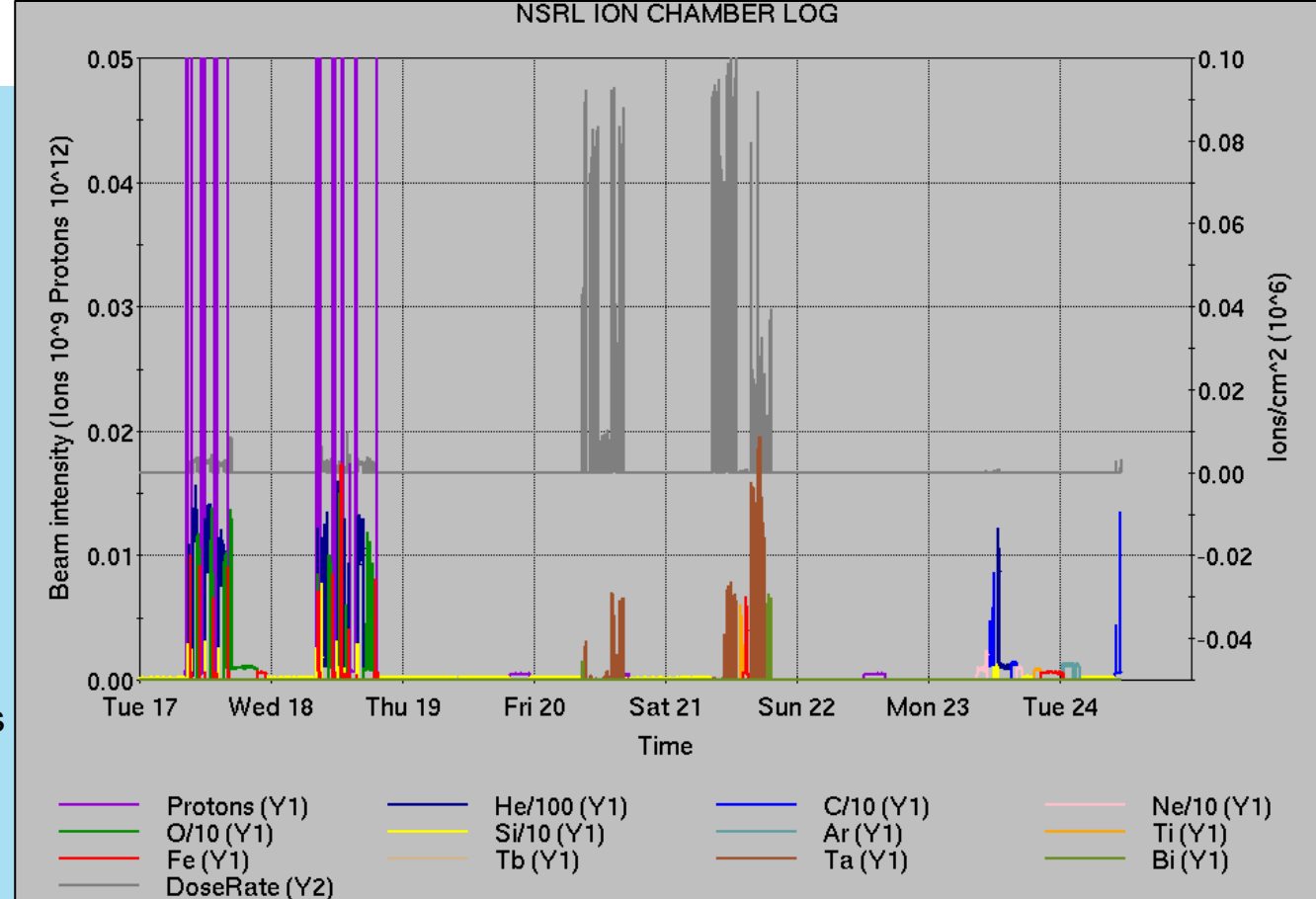
- Beam abort, yi7-sxd2-ps trip
- Booster MMPS failure, trench opened for magnet bus insulator repair
- RHIC RF Cooling Tower failure, fan repaired
- Beam abort, 56MHz MPS trip; water flow faults reset
- Yellow injection kicker PS failure (4x); output remains below normal
- Blue orbit feedback system failure, Controls bucket selector misconfigured
- Blue collimator drive failure, v0 motors exercised
- STAR magnet PS trip, required half-field due to cooling limits
- RHIC Controls failure, 6b-ps1 fanout failure, replaced hardware
- Linac RF Mod 7 failure, diode stack/resistor replaced
- Linac Mod 9 failure, retuned for arcing in 7835 tube
- Linac RF Mod 7 failure, crowbar circuit required power cycles to FECs
- BLIP interlock, NMON+permit+BM1&2 trip; reset
- Linac Mod2 trips (6x)
- EBIS collector PS trips (14x)
- RHIC beam aborts (13x); various injection/ramp issues, intensity, tuning...

Other notes

- 1 lightning stand down; rain and heat affecting in plenty of other ways...
- AGS G09C BLW PS remote control total loss, ongoing
- ACS 1012 remote keytree remains inoperable, awaiting maintenance day
- AGS E17 gamma-t PS failure (2x); bus contacts, GTO repaired
- Various Linac trips, resets
- BLIP current transformer failure, rewired/recalibrated to share working transformer
- Various injector PS trips, resets, tuning
- Various Tandem tuning, access, foil changes



Over 11 hours injector pp setup, Operator training, other Au setup (when injector systems are available)



	Linac	Tandem	EBIS	Booster	AGS	ATR	RHIC	ERL	Other	Total
Total	1 (4)	16 (40)	4 (4)	9 (8)	10 (13)	2 (3)	18 (18)	0 (0)	22 (10)	82 (100)
RF	1 (0)	0 (0)	0 (0)	0 (1)	0 (0)	0 (0)	5 (0)	0 (0)	9 (6)	15 (7)
PS	0 (2)	14 (6)	0 (4)	2 (0)	7 (6)	0 (3)	5 (10)	0 (0)	0 (1)	28 (32)
Vacuum	0 (0)	2 (34)	2 (0)	0 (5)	0 (0)	0 (0)	3 (4)	0 (0)	5 (2)	12 (45)
Inst	0 (0)	0 (0)	0 (0)	0 (1)	0 (2)	2 (0)	0 (4)	0 (0)	1 (1)	3 (8)
Other	0 (2)	0 (0)	2 (0)	7 (1)	3 (5)	0 (0)	5 (0)	0 (0)	7 (0)	24 (8)

Reminder from Operations

- MCR beam operations continue
 - RHIC physics running continues with more system startups, beam tuning, luminosity ramp-up
 - Tandem remains sole provider of Au31 for RHIC
 - Operator/OC shifts continue for NSRL biology, 1-2 shifts/5 days this week and next.
 - No ions from Tandem; Linac protons as required through 27 June; Ion beams from EBIS.
 - BLIP production ends 27 June. Additional short runs follow end of 200MeV production on Friday
 - AGS Polarized proton setup, other studies to continue behind stores as time allows.
 - *MCR on duty 24/7.*
- Changes? Time to update is *now*. Expect calls at all hours.
 - Alarm response instructions: Groups prompted for updates
 - <http://directory.pbn.bnl.gov/>
 - CHECK AND EDIT YOUR OWN CONTACT INFO
 - https://www.cadops.bnl.gov/Operations/personnel/call_in_lists/
 - CHECK YOUR CALLIN LIST: expect contact off-hours

Availability: RHIC Run-25

