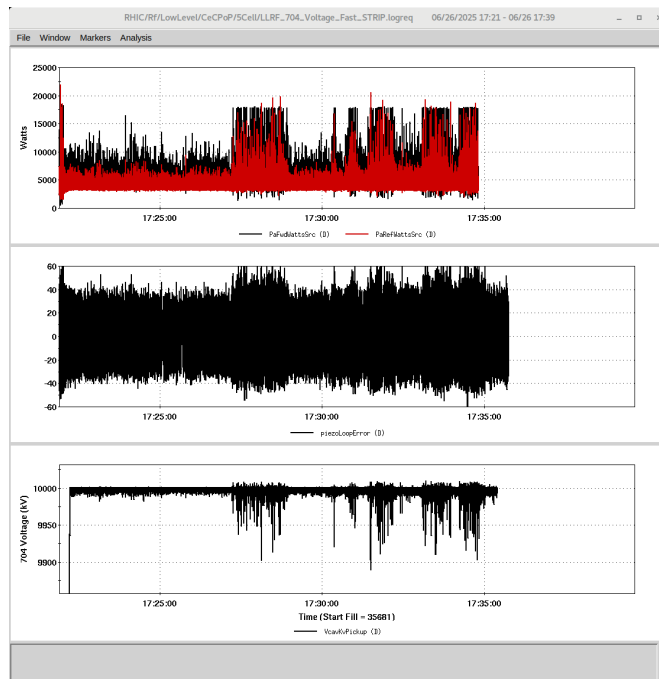


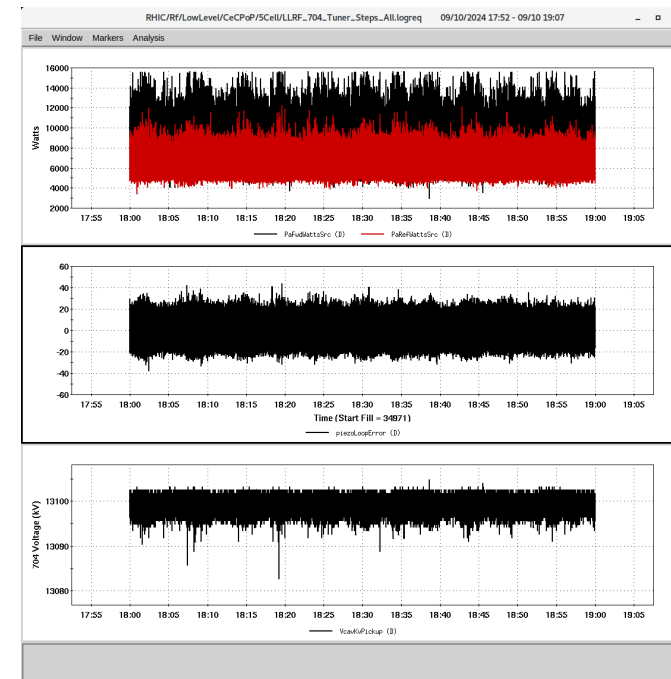
# CeC status, 7/1/25

## SRFs

- 704 MHz cavity was brought up to operational voltage (for 10 MeV full energy beam) with relaxed gains in feedback loops.
- Larger detuning this year vs last year was found.
- RF group will work with Cryo during maintenance to address this.



This year, > +/- 60 deg

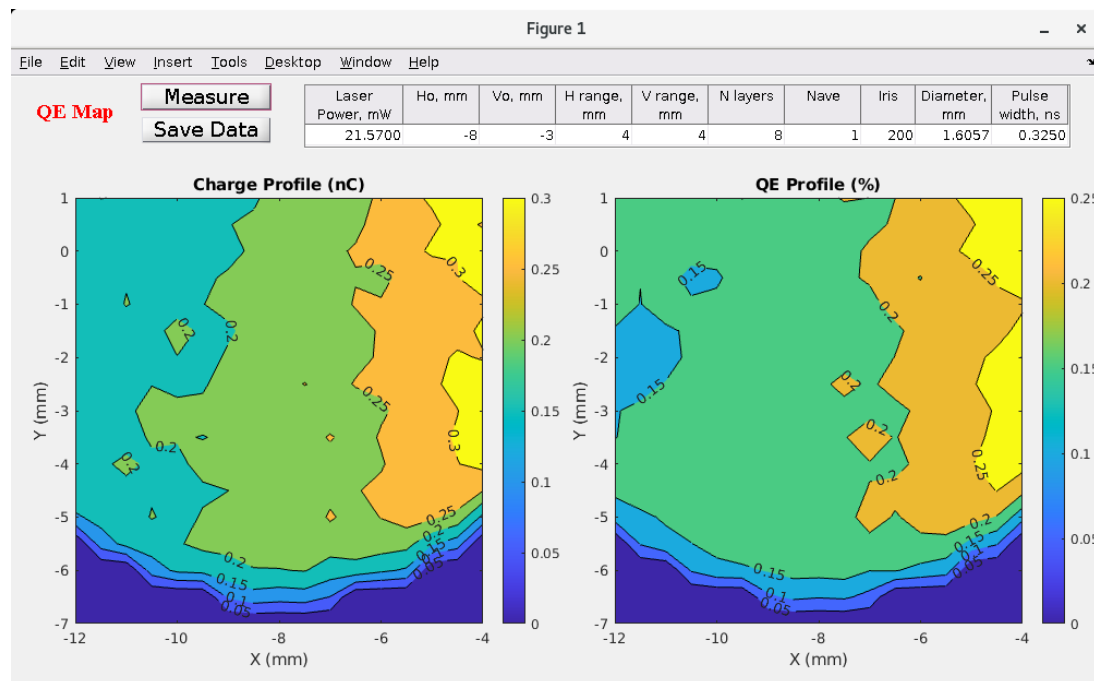


This year, ~ +/- 20 deg

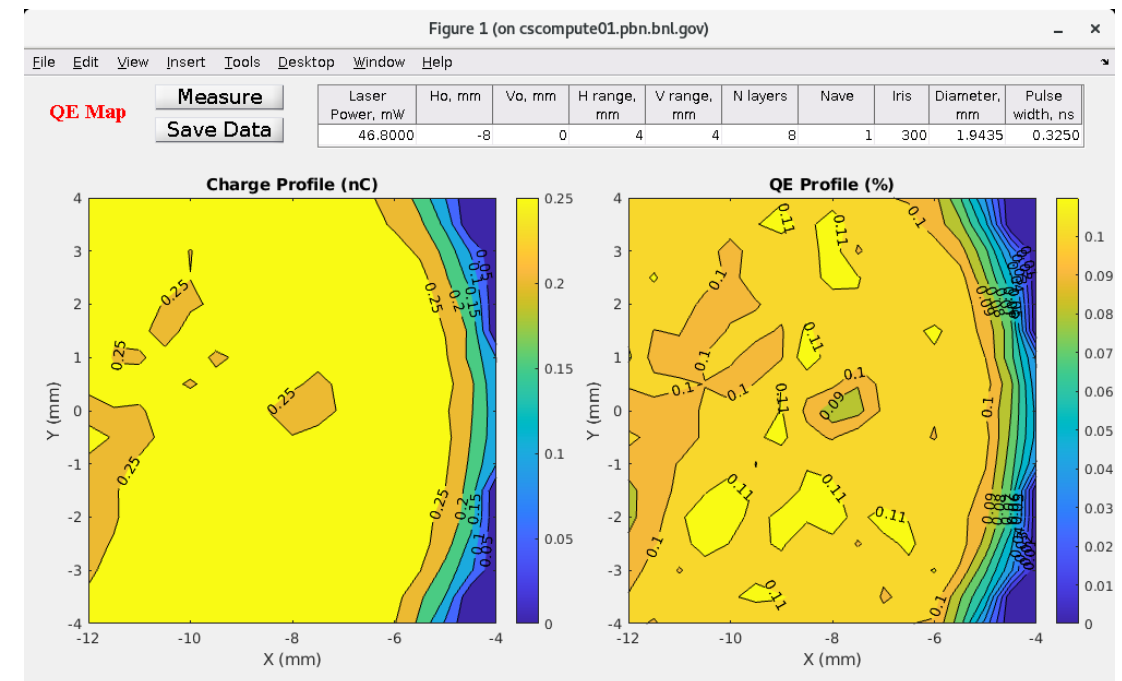
@FSS, GN, KJM

# Cathode

- QE map was taken for various areas on the cathode and uniform region was identified.
- Cathode team made adjustment and laser spot operated in the desirable region after cathode realignment.
- Cathode died quickly (now  $< 100$  pC at maximum available laser intensity, below ICT thres.). Will replace new cathode at maintenance.



QE on bot left part is more uniform, need to rotate 120 deg cw



QE var  $< \pm 10\%$  p2p in ROI after rotation, however QE degraded fast