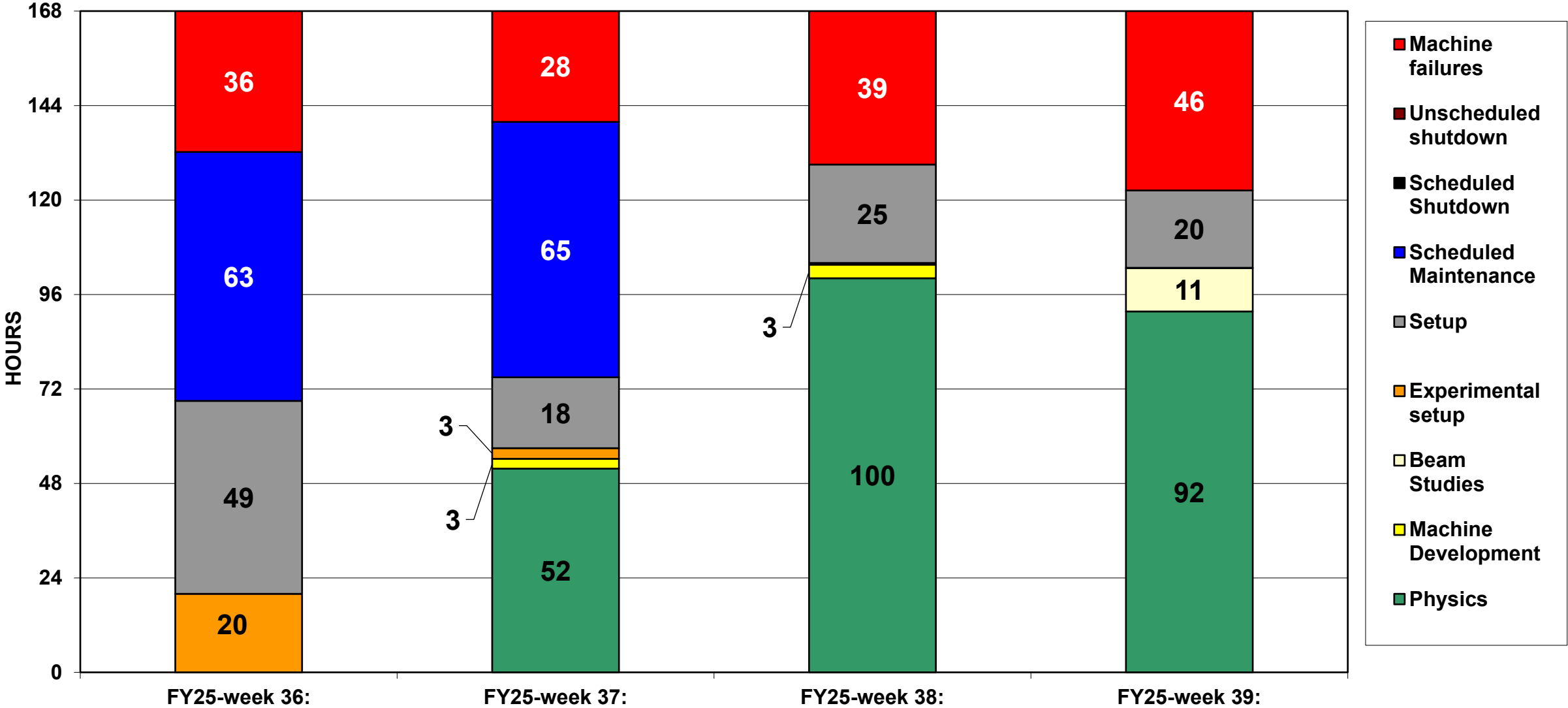
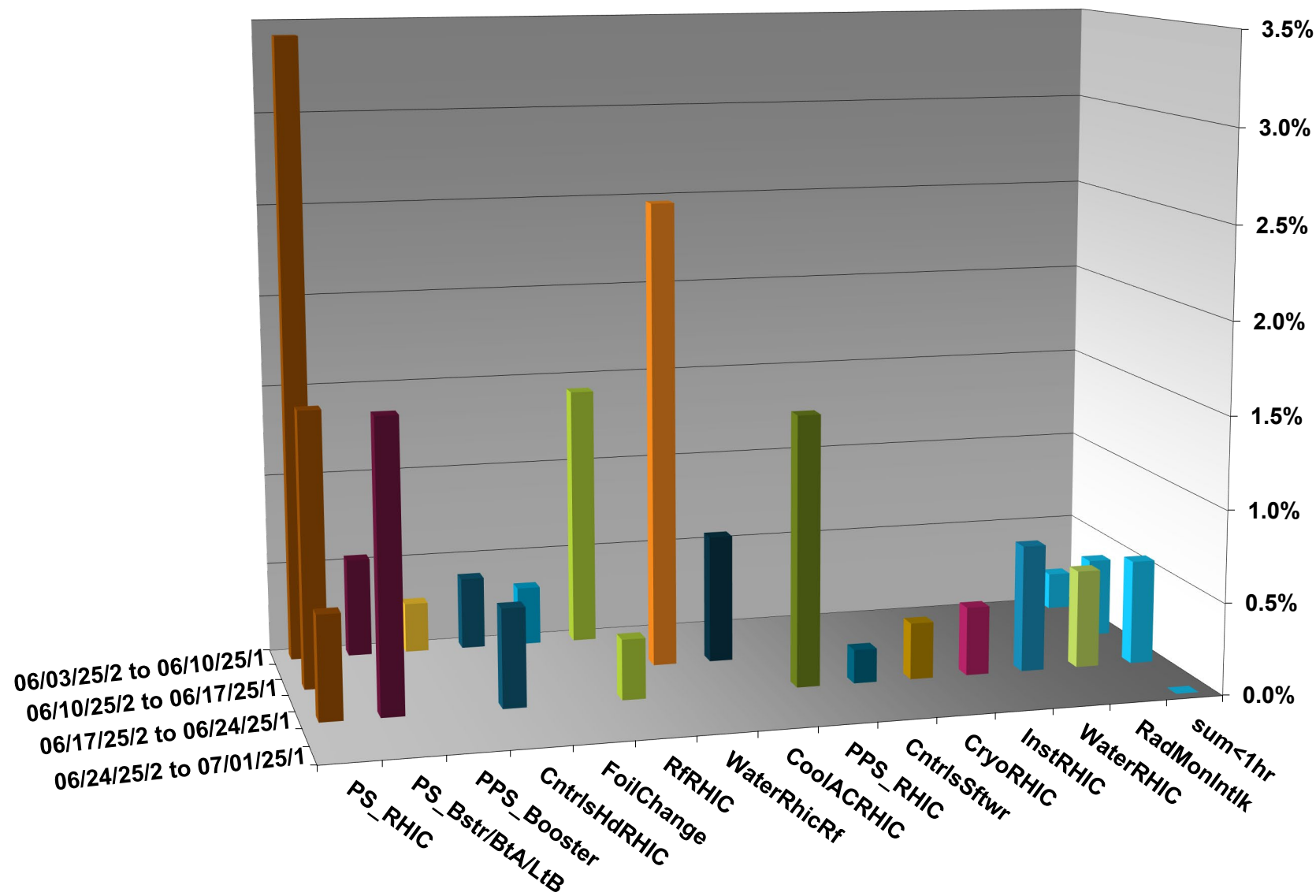


C-AD ACTIVITY JUNE 2025



INTEGRATED FAILURES (GREATER THAN ONE HOUR) BY SYSTEM - JUNE 2025



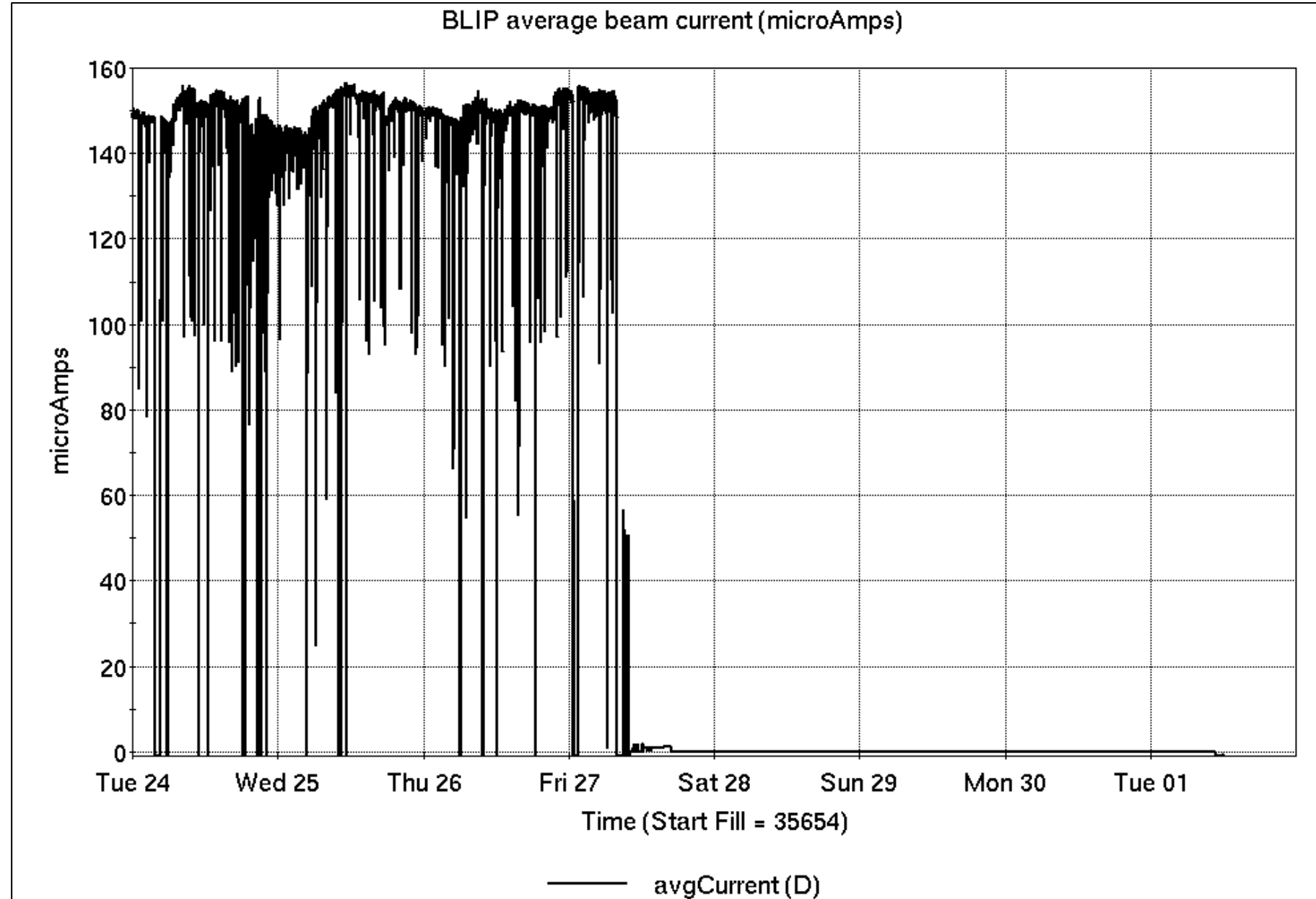
Operations for BLIP

6/24-7/1/2025:

200 MeV production concluded Friday, with additional 117 and 66 MeV exposures.

- 75.27 hr production
- 4.08 hr setup
- 1.65 hr failures

Availability: 98.0%



NSRL activity past week: 6/24-7/1/2025 (as of 0800)

NSRL running continues.

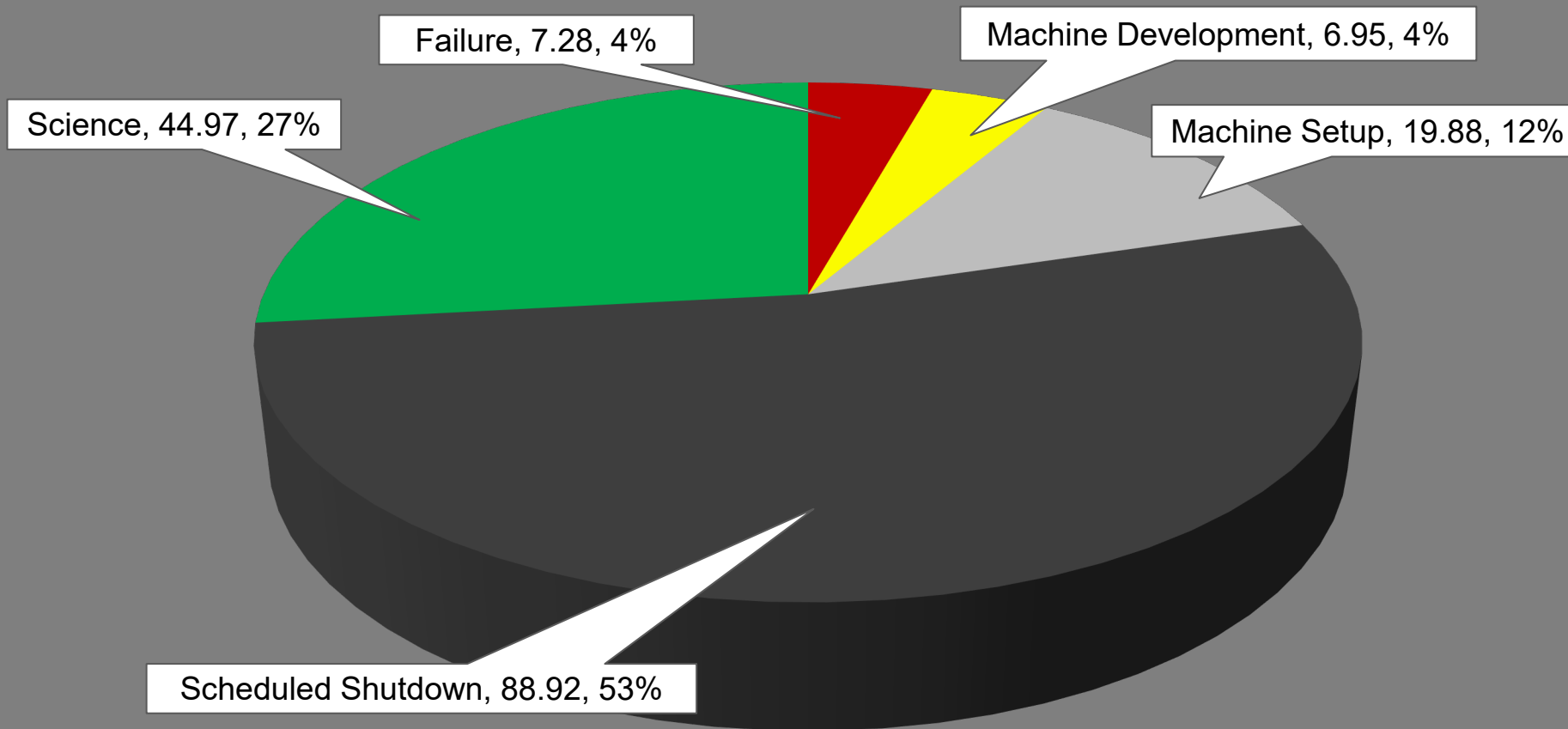
NASA biology in GCR mode ends, with other user time and beam development continuing.

No Tandem ions; Linac protons, 13 EBIS ions (He, C, Ne, O, Si, Ar, Fe, Nb, Ag, Tb, Ta, Au, Bi) delivered to NSRL.

Run 25-A concluded.

Run 25-C began 30 June;
25-C schedule posted,
updates forthcoming through
1 October.

NSRL Hours



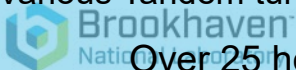
Notes from Operations

Notable failures (>1 hr)

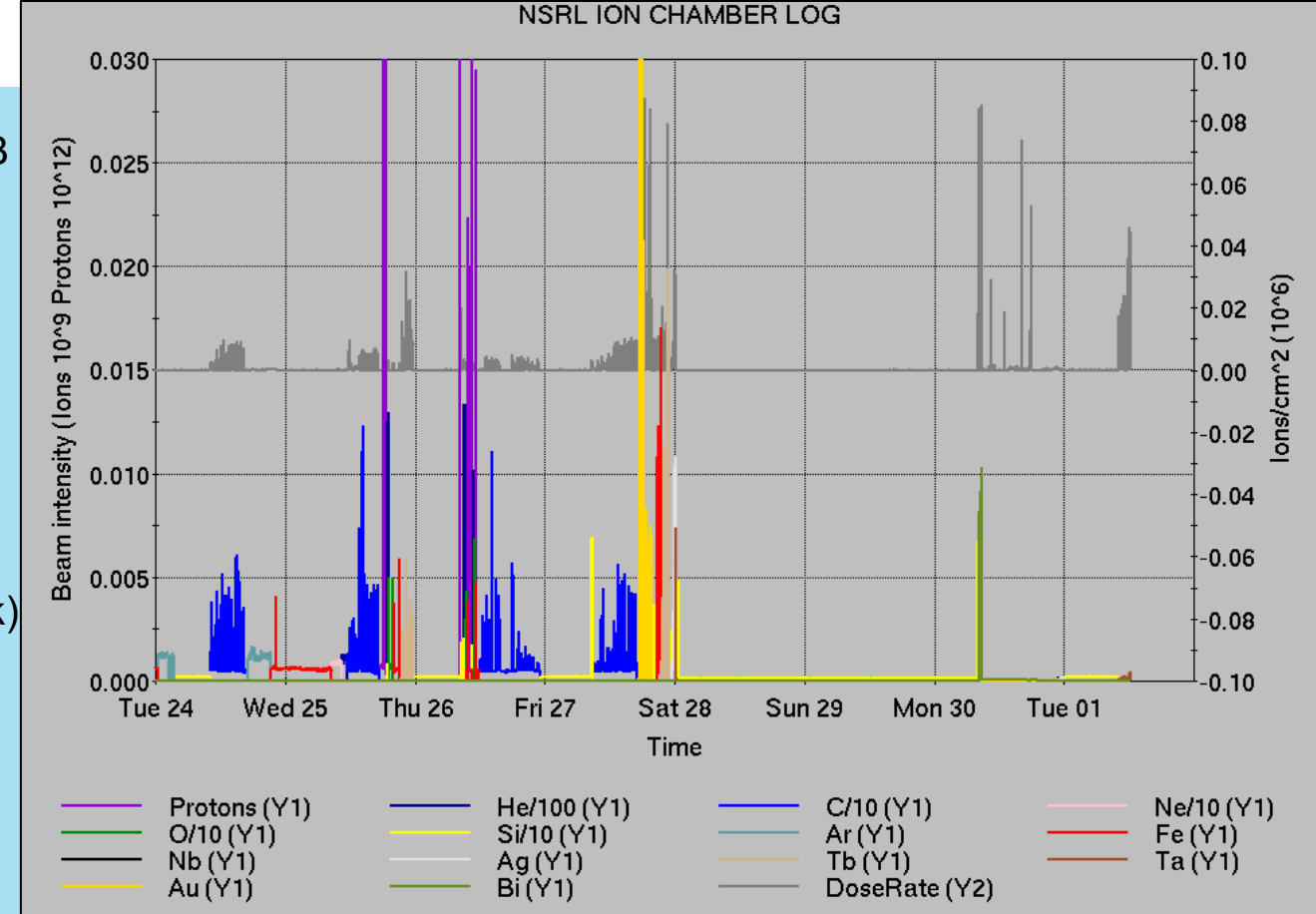
- Yellow QLI/beam abort, Yellow Main PS temp issues in 1004B
 - Weather stand-down ensued, due to the heat
- bi5-tq4-ps failure, replaced
- Fire/Rescue response and tunnel access, sector 4
 - ODH sensor failure ensued due to active fans
- RHIC BS1 cavity trip, breaker reset
- 9a alcove HVAC failure
- 56MHz lead flow issue, access
- EBIS drift tube PS failure, Trek supply restored
- Booster vacuum failure, valve closed from bad gauge controller; replaced
- EBIS LION2 source failure, cage access to repair digi unit
- EBIS collector PS trips (16x, more logged than previous week)
- Additional RHIC beam aborts (8x);
 - BPM 3x (disabled bi12-bh3)
 - human error (PS control)
 - BLM 3x (YA1 trip, rebucketing loss, transition loss)
- multiple NQBPS trip, beam induced QLI ensued
- Blue QLI/beam abort, sector 10 QPA replaced
- y05-qs3-ps failure, replaced
- Stand down for weather, power dips, and extended recovery.*
- RHIC vacuum failure, sector 9 valve interlocked on failed pump. reconfigured

Other notes

- AGS G09C BLW PS remote control unavailable, ongoing
- ACS 1012 remote keytree remains inoperable, awaiting maintenance day
- Blue, Yellow injection kicker PS trips, trigger issues
- Experiment, CeC accesses
- Various Linac mispulsing, trips, resets
- Various RF trips, reets (BS4, YA1, YS2, BS1)
- Various injector PS trips, resets, tuning
- Various Tandem tuning, access, foil changes



Over 25 hours injector pp setup, Operator training, other Au setup
(when injector systems are available)



	Linac	Tandem	EBIS	Booster	AGS	ATR	RHIC	ERL	Other	Total
Total	13 (2)	9 (42)	7 (4)	7 (9)	11 (9)	3 (1)	26 (16)	0 (0)	28 (8)	104 (91)
RF	0 (0)	0 (0)	0 (0)	0 (1)	0 (0)	0 (0)	5 (0)	0 (0)	10 (6)	15 (7)
PS	7 (0)	4 (8)	2 (4)	1 (0)	3 (2)	2 (1)	15 (8)	0 (0)	0 (1)	34 (24)
Vacuum	0 (0)	5 (34)	1 (0)	0 (6)	4 (0)	0 (0)	2 (4)	0 (0)	11 (0)	23 (44)
Inst	0 (0)	0 (0)	0 (0)	0 (1)	0 (2)	1 (0)	0 (4)	0 (0)	2 (1)	3 (8)
Other	6 (2)	0 (0)	4 (0)	6 (1)	4 (5)	0 (0)	4 (0)	0 (0)	5 (0)	29 (8)

Reminder from Operations

- MCR beam operations continue

- RHIC physics running continues
 - Tandem remains sole provider of Au31 for RHIC
- Operator/OC shifts continue for NSRL biology, 1-2 shifts/5 days this week and next.
 - **No ions from Tandem**; Linac protons as required through 27 June; Ion beams from EBIS.
- No additional BLIP production, Linac remains available.
- AGS Polarized proton setup, other studies to continue behind stores as time allows.
- *MCR on duty 24/7.*

- Changes? Time to update is *now*.
Expect calls at all hours.

- **Alarm response instructions: need updates**
- <http://directory.pbn.bnl.gov/> CHECK AND EDIT YOUR OWN CONTACT INFO
- https://www.cadops.bnl.gov/Operations/personnel/call_in_lists/
 - CHECK YOUR CALLIN LIST: expect contact off-hours
 - **Summer is vacation time! *Make sure your list is accurate***

MCR Call In List: Edit

See [directory](#) for full listing of MCR staff.

Expertise	Name	Extension	Cell Phone	Home Phone	Pager	e-mail	Time Off	Notes
OPM / Conduct of Operations	Gregory Marr	7810	215-262-9151	631-924-1752		gmarr@bnl.gov	07/08/2025 - 07/17/2025	Group Leader
MCR "facility"	Travis Shrey	7451	631-987-7754	631-874-0706		shrey@bnl.gov	Active	Deputy GL
Training, sweeps, procedures	Chris Naylor	7986	631-642-0959	use cell		cnaylor@bnl.gov	07/01/2025 - 07/09/2025	
Injector Performance:								
Primary Contact	Keith Zeno	7175	631-806-4430			zeno@bnl.gov	Active	
Secondary Contact	Iris Zane	7697	518-588-6776			izane@bnl.gov	Active	
RHIC/ATR Performance:								
Primary Contact	Travis Shrey	7451	631-987-7754	631-874-0706		shrey@bnl.gov	Active	
Primary Contact	Brendan Lepore	2439	847-656-6842			blepore@bnl.gov	Active	
Secondary Contact	Vincent Schoefer	8453	917-355-5312	631-772-2393		vschoefer@bnl.gov	Active	
General	Gregory Marr	7810	215-262-9151	631-924-1752		gmarr@bnl.gov	07/08/2025 - 07/17/2025	
CeC Machine Specialist	Travis Shrey	7451	631-987-7754	631-874-0706		shrey@bnl.gov	Active	
LEReC Machine Specialist	Travis Shrey	7451	631-987-7754	631-874-0706		shrey@bnl.gov	Active	
Booster Performance for NSRL:								

Availability: RHIC Run-25

