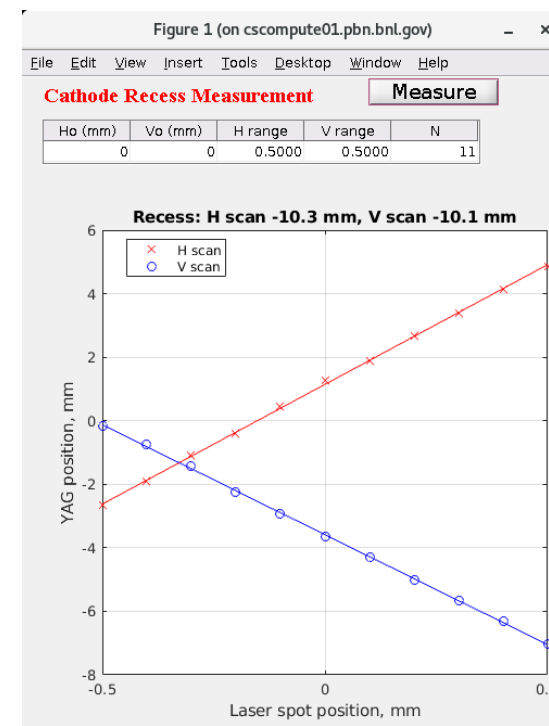


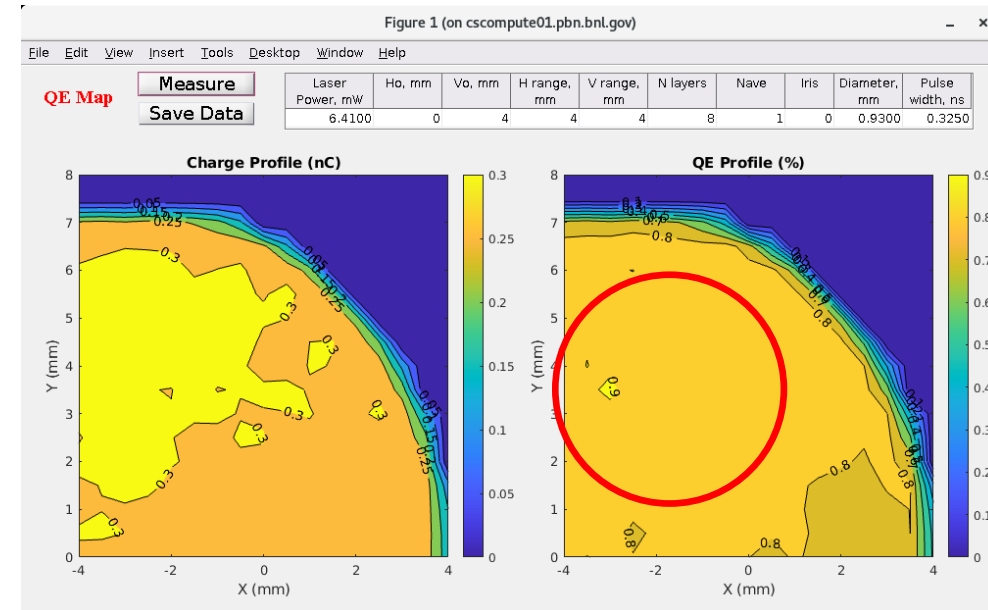
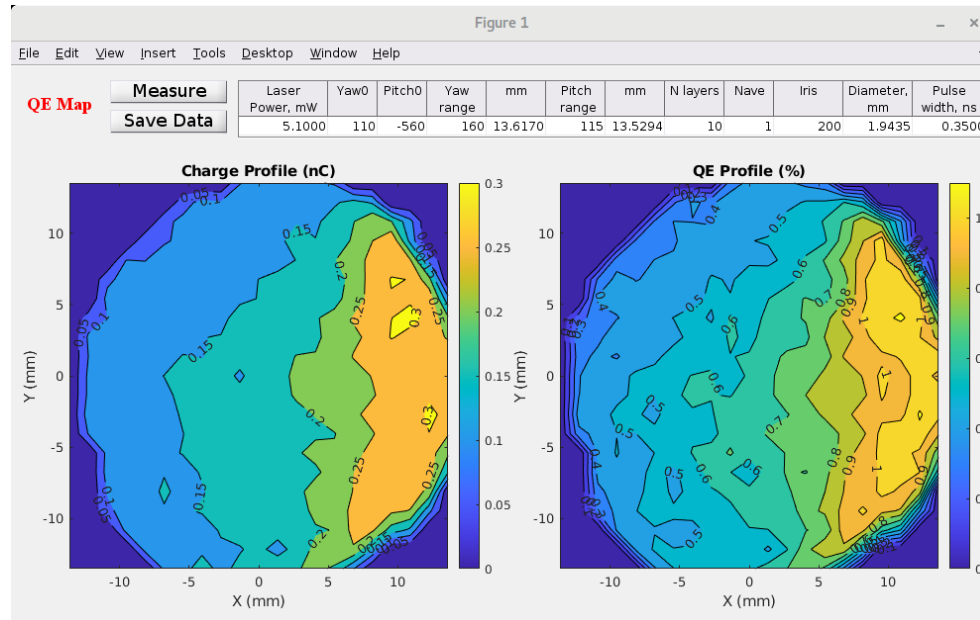
# CeC status, 7/8/25

## Cathode

- New Na cathode inserted at the requested recess location.
- QE (~0.8%) has been stable for the past few days.
- Beam operated in region where QE uniformity is good.

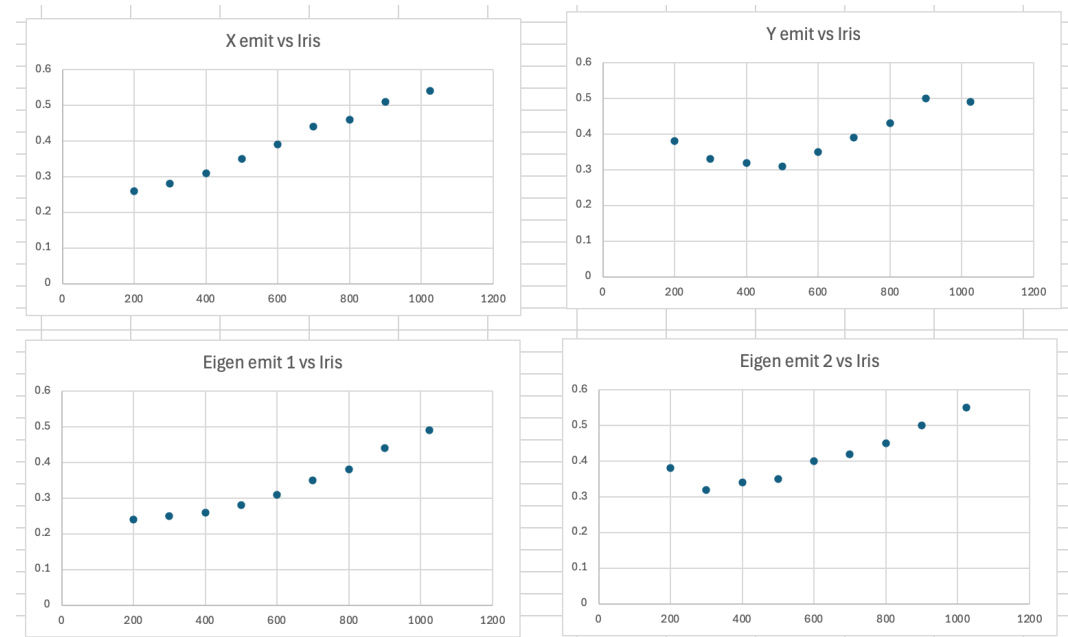


Recess from magnification  
on yag screen, requested  
-10.5 mm



## Beam quality and SRF

- Measured projected emittances (geometric) at first yag screen range from 0.3 – 0.5  $\mu\text{m}$  for most laser configurations (spot location and iris).



- 704 MHz needs more work to stabilize the large voltage vibration ( $> 0.5\%$  p2p)

