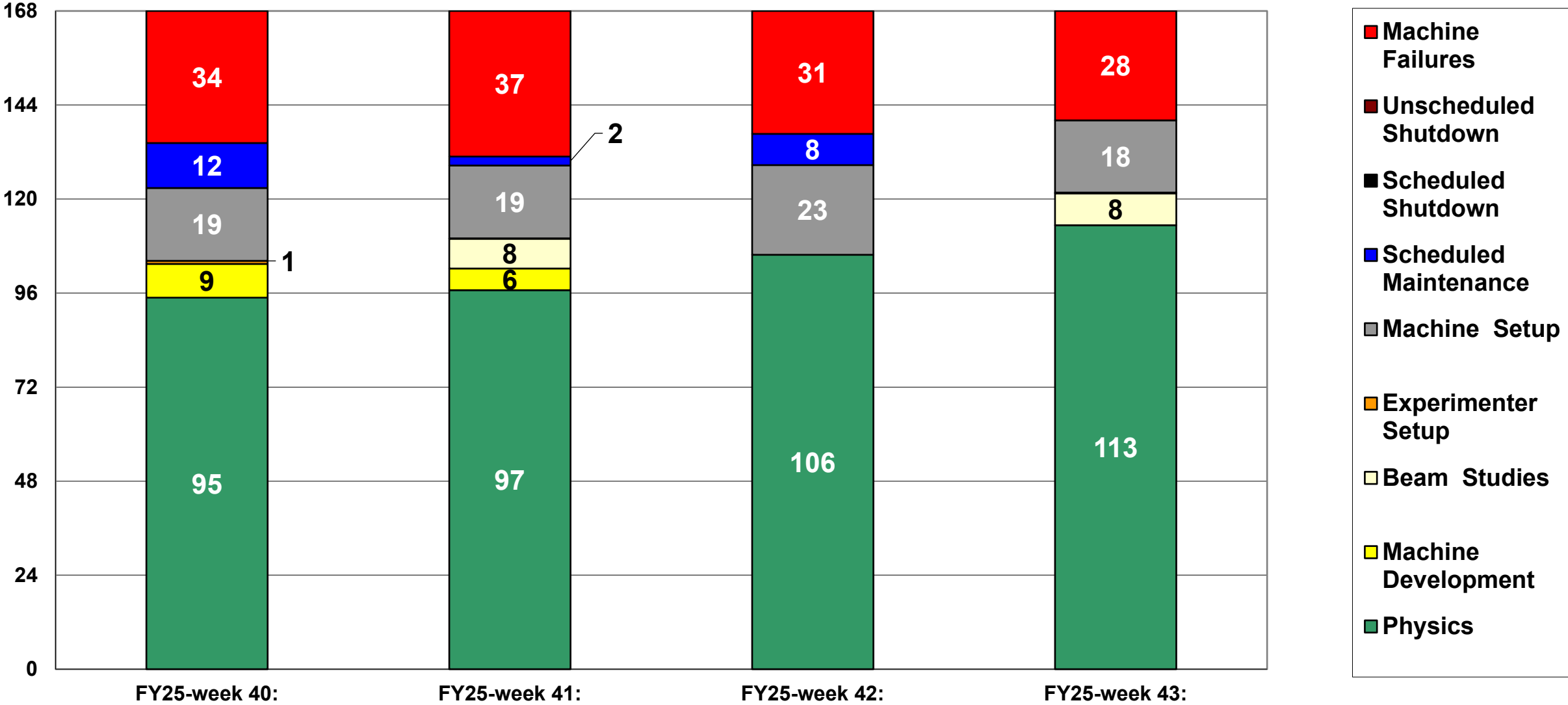
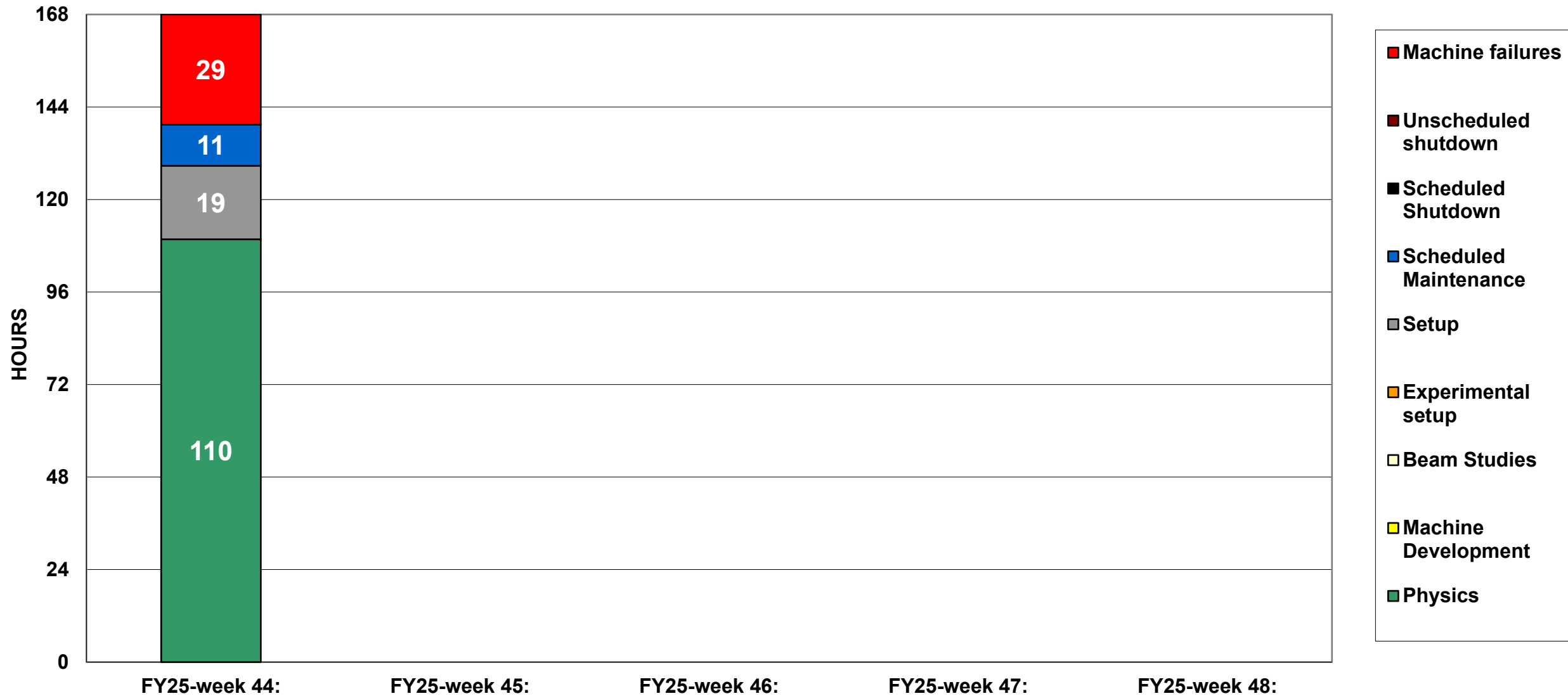


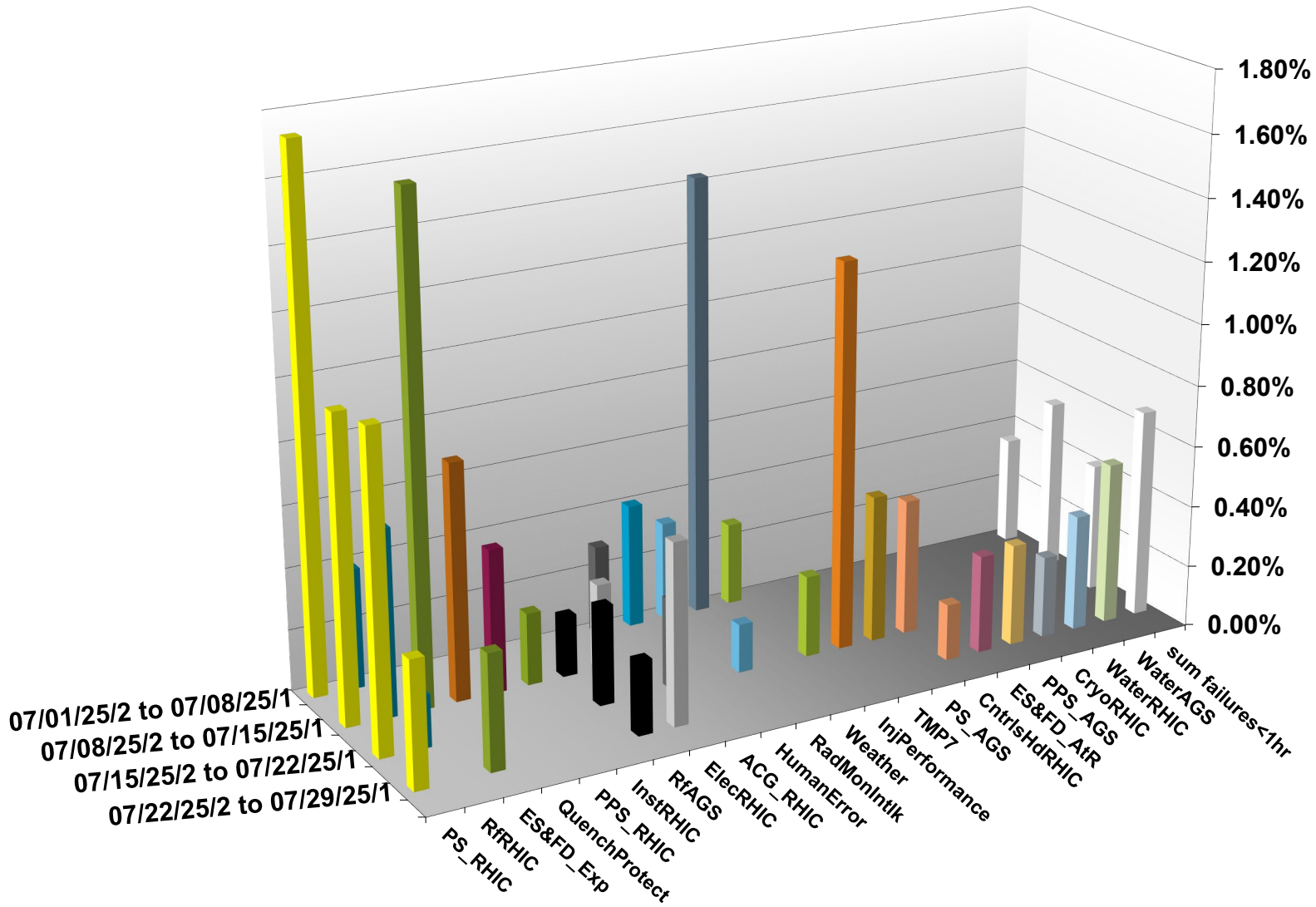
C-AD ACTIVITY July 2025



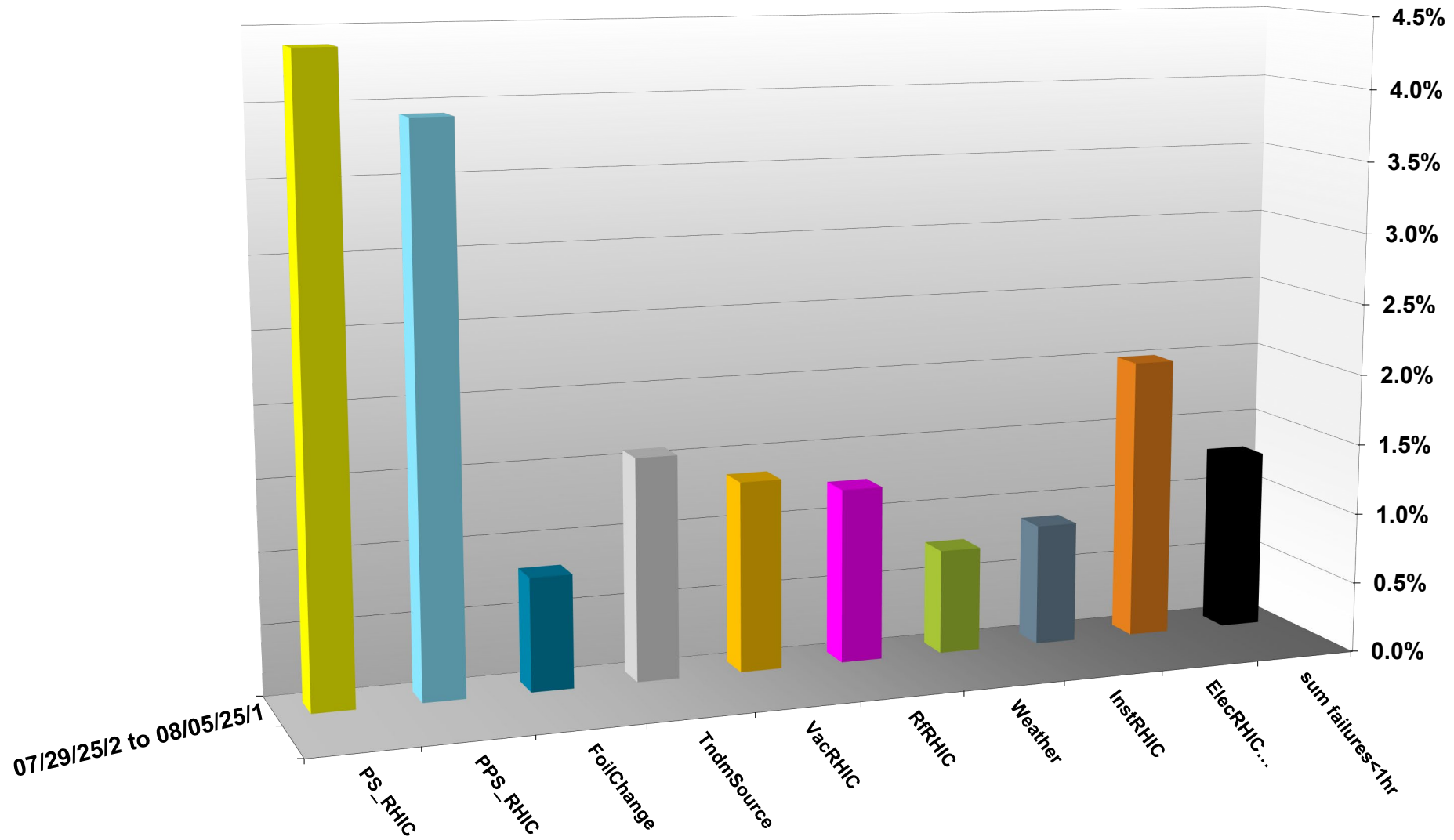
C-AD ACTIVITY AUGUST 2025



INTEGRATED **FAILURES** (GREATER THAN ONE HOUR) **BY SYSTEM** -- July 2025



INTEGRATED FAILURES (GREATER THAN ONE HOUR) BY SYSTEM -- AUGUST 2025



NSRL activity past week: 7/29-8/5/2025 (as of 0800)

NSRL running continues.

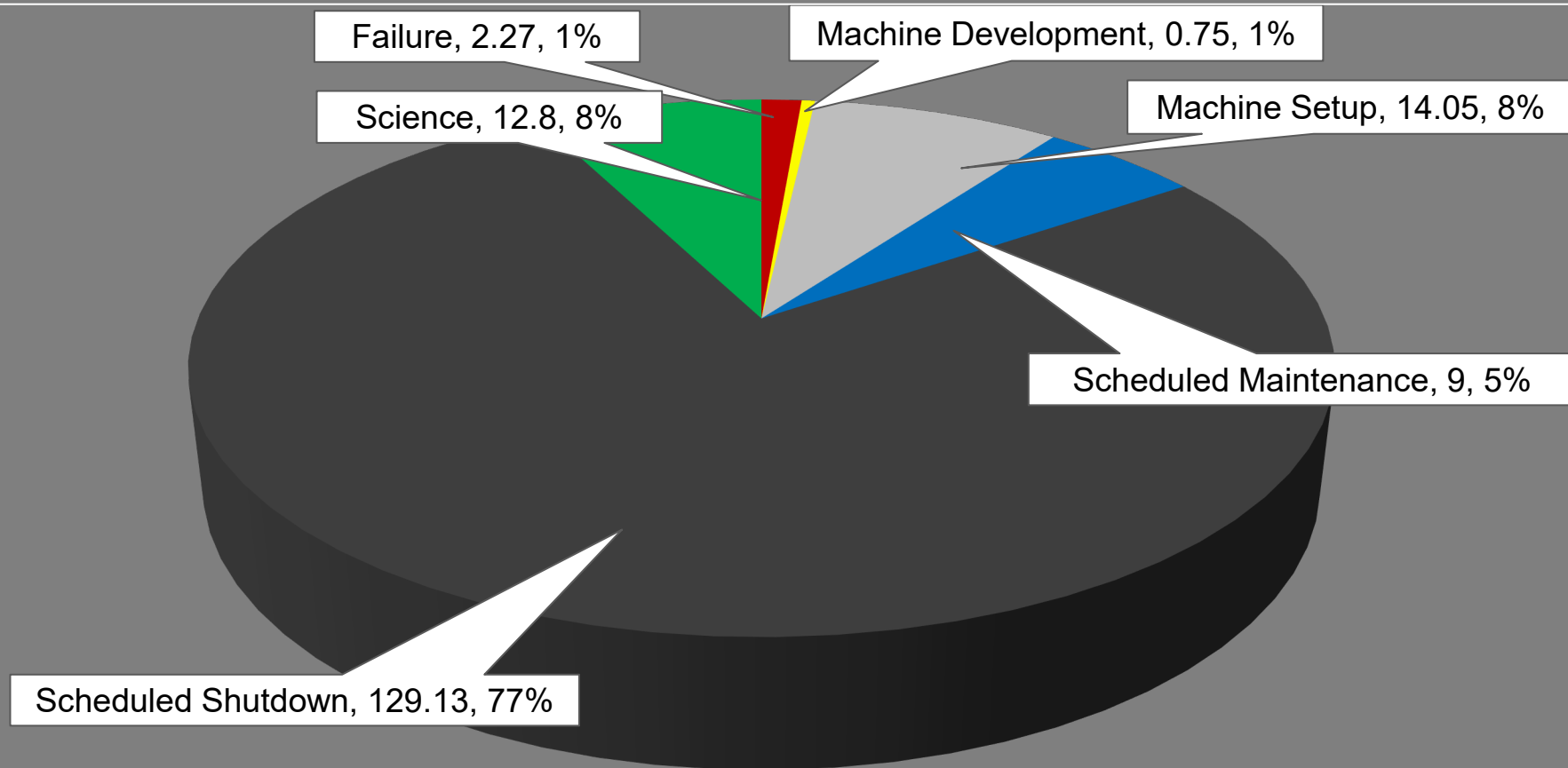
Various user time and beam development continuing.

8 species (H Si, Ti, Fe, Ag, Ta, Au, Bi) logged to NSRL.

Run 25-C **began 30 June**;
25-C schedule posted,
updates forthcoming through
1 October.

NSRL Hours

Experimental Setup	Failure	Machine Development	Machine Setup
Operator Training	Scheduled Maintenance	Scheduled Shutdown	Science



Notes from Operations

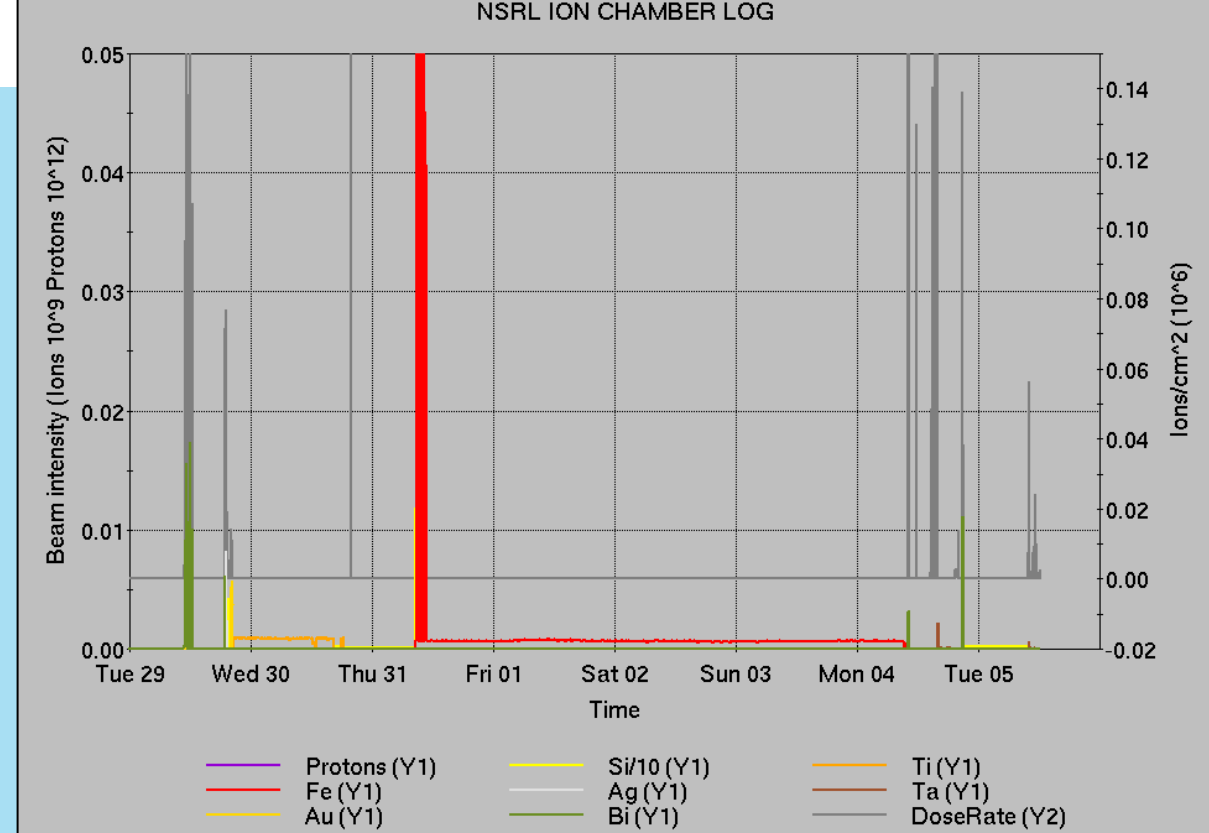
Notable failures (>1 hr)

- bi5-tq4 trip on gas cooled lead, cooling coefficients changed
- yo1-octd-ps failed after maintenance, replaced 2x
- Tandem source failure, focusing lens replaced
- Weather stand down, included power dip affecting various systems
- bi5-qf9-ps failure/beam abort; regulator cards replaced
- Power dip, not storm related
- BLM abort at rebucketing, Blue storage cavity issues
- Yellow abort kicker failure, f/o transmitter replaced
- Vacuum beam abort, fuse assembly repaired
- EBIS collector trip, recovery tape unsuccessful.

Other notes

- BLM abort, loss monitor failed, masked until repair
- G10 kicker thyatron issues, addressed in maintenance
- Booster D6 septum temperature issues
- Other various trips, resets

Over 78 hours CeC shifts gun conditioning; additional injector beam Au setup, Operator training (when injector systems are available)



	Linac	Tandem	EBIS	Booster	AGS	ATR	RHIC	ERL	Other	Total
Total	0 (215)	10 (67)	11 (5)	7 (15)	6 (15)	7 (1)	33 (10)	0 (0)	27 (10)	101 (338)
RF	0 (26)	0 (0)	0 (0)	0 (1)	2 (0)	0 (0)	3 (0)	0 (0)	5 (6)	10 (33)
PS	0 (174)	9 (29)	11 (4)	1 (5)	2 (6)	3 (1)	24 (0)	0 (0)	0 (1)	50 (220)
Vacuum	0 (2)	1 (38)	0 (1)	0 (6)	0 (2)	0 (0)	1 (7)	0 (0)	16 (0)	18 (56)
Inst	0 (0)	0 (0)	0 (0)	3 (1)	0 (2)	1 (0)	1 (3)	0 (0)	2 (1)	7 (7)
Other	0 (13)	0 (0)	0 (0)	3 (2)	2 (5)	3 (0)	4 (0)	0 (0)	4 (2)	16 (22)

Tue Aug 05 12:22:07 EDT 2025

Reminder from Operations

- MCR beam operations continue

- RHIC physics running continues
 - Tandem remains sole provider of Au31 for RHIC
- Operator/OC shifts continue for NSRL users, 5 days/1-2 shifts this week; MD only next.
 - Au31 from Tandem for higher intensity; no proton beams; Ion beams from EBIS.
- AGS tuning, other studies to continue behind stores as time allows.
- *MCR on duty 24/7.*

- Changes? Time to update is *now*.
Expect calls at all hours.

- Alarm response instructions: need updates
- <http://directory.pbn.bnl.gov/> CHECK AND EDIT YOUR OWN CONTACT INFO
- <https://www.cadops.bnl.gov/Operations/personnel>
 - CHECK YOUR CALLIN LIST: expect contact off-hours
 - Summer is vacation time! **Make sure your list is accurate**

MCR Call In List:

See [directory](#) for full listing of MCR staff.

Expertise	Name	Extension	Cell Phone	Home Phone	Pager	e-mail	Time Off	Notes
OPM / Conduct of Operations	Gregory Marr	7810	215-262-9151	631-924-1752		gmarr@bnl.gov	07/08/2025 - 07/17/2025	Group Leader
MCR "facility"	Travis Shrey	7451	631-987-7754	631-874-0706		shrey@bnl.gov	Active	Deputy GL
Training, sweeps, procedures	Chris Naylor	7986	631-642-0959	use cell		cnaylor@bnl.gov	Δ07/01/2025 - 07/09/2025Δ	
Injector Performance:								
Primary Contact	Keith Zeno	7175	631-806-4430			zeno@bnl.gov	Active	
Secondary Contact	Iris Zane	7697	518-588-6776			izane@bnl.gov	Active	
RHIC/AR Performance:								
Primary Contact	Travis Shrey	7451	631-987-7754	631-874-0706		shrey@bnl.gov	Active	
Primary Contact	Brendan Lepore	2439	847-656-6842			blepore@bnl.gov	Active	
Secondary Contact	Vincent Schoefer	8453	917-355-5312	631-772-2393		vschoefer@bnl.gov	Active	
General	Gregory Marr	7810	215-262-9151	631-924-1752		gmarr@bnl.gov	07/08/2025 - 07/17/2025	
CeC Machine Specialist	Travis Shrey	7451	631-987-7754	631-874-0706		shrey@bnl.gov	Active	
LEReC Machine Specialist	Travis Shrey	7451	631-987-7754	631-874-0706		shrey@bnl.gov	Active	
Booster Performance for NSRL:								

Availability: RHIC Run-25

