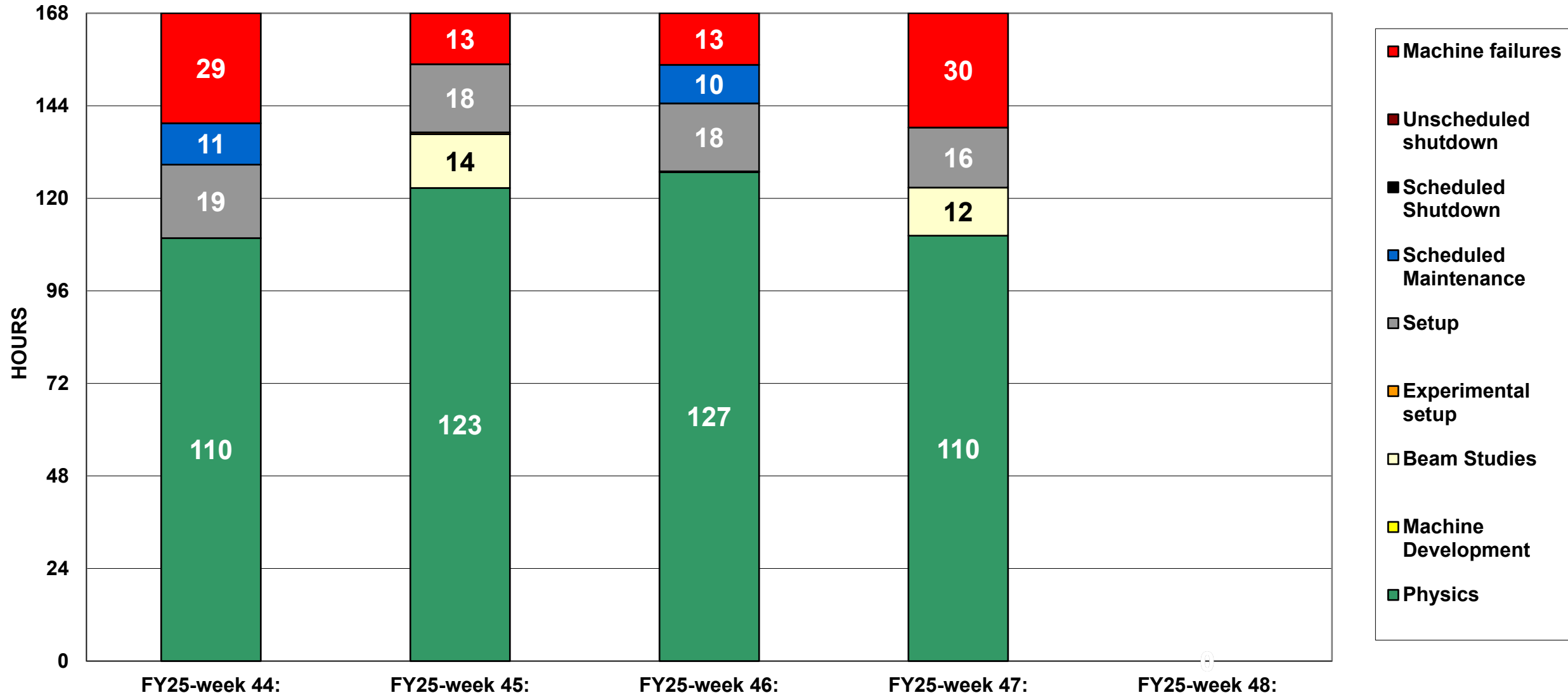
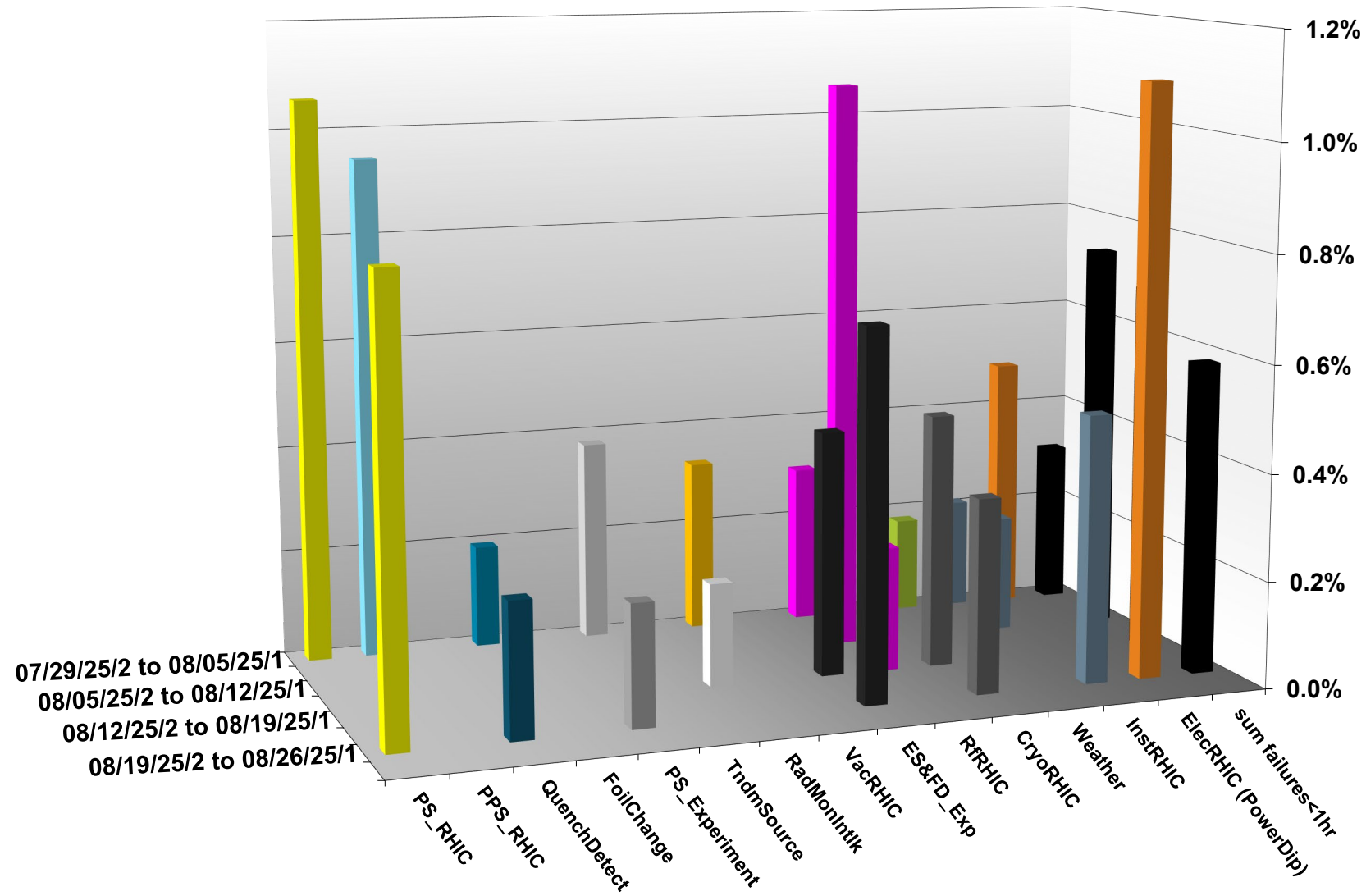


## C-AD ACTIVITY      AUGUST 2025



# INTEGRATED FAILURES (GREATER THAN ONE HOUR) BY SYSTEM -- AUGUST 2025



# NSRL activity past week: 8/19-26/2025 (as of 0800)

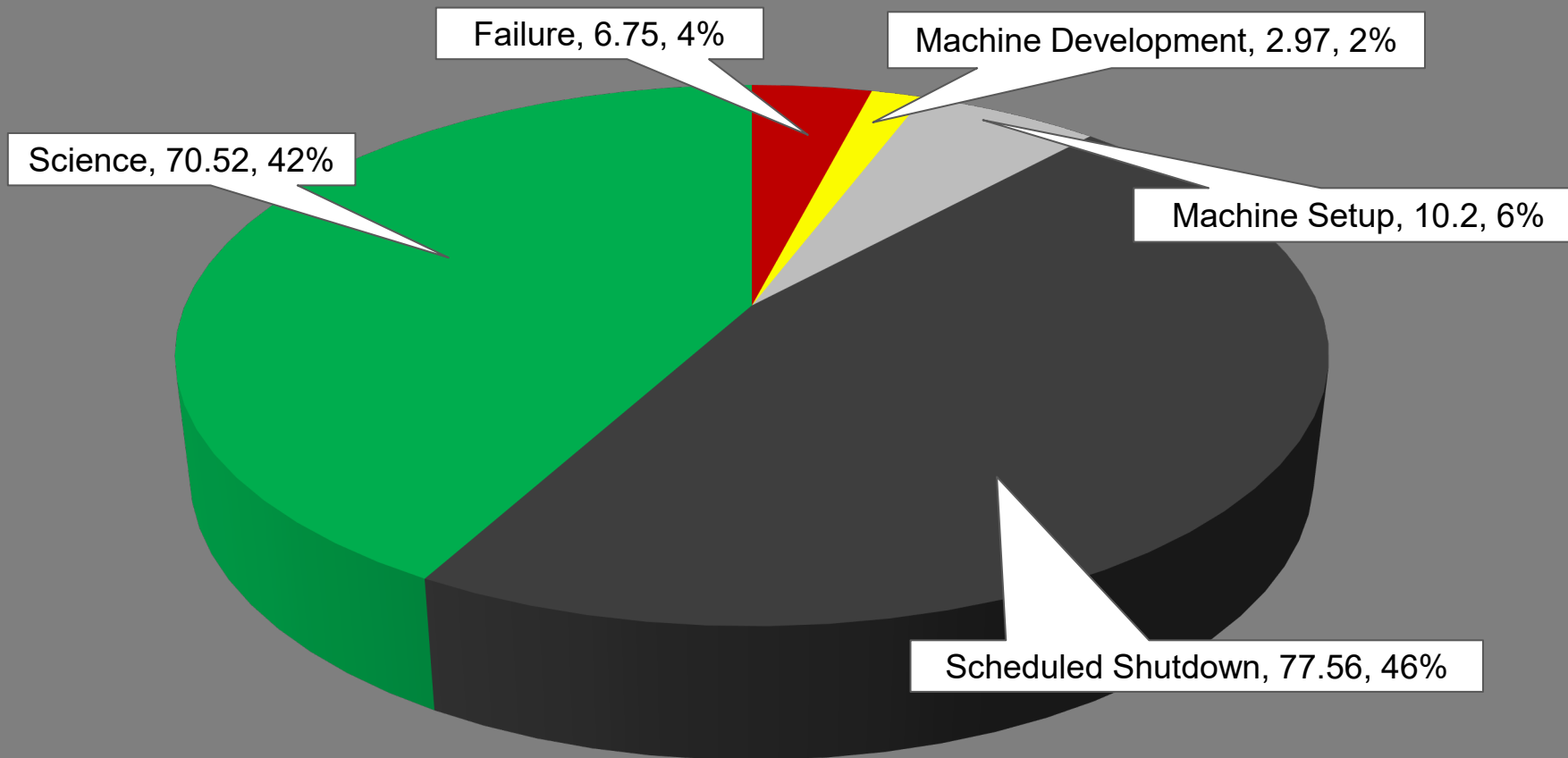
NSRL running continues.

Various setup and user beam time trough the week.

8 species (Si, Ti, Fe, Nb, Ag, Ta, Au, Bi) logged to NSRL.

Run 25-C began 30 June;  
25-C schedule posted,  
updates forthcoming through  
1 November.

## NSRL Hours



# Notes from Operations

## Notable failures (>1 hr)

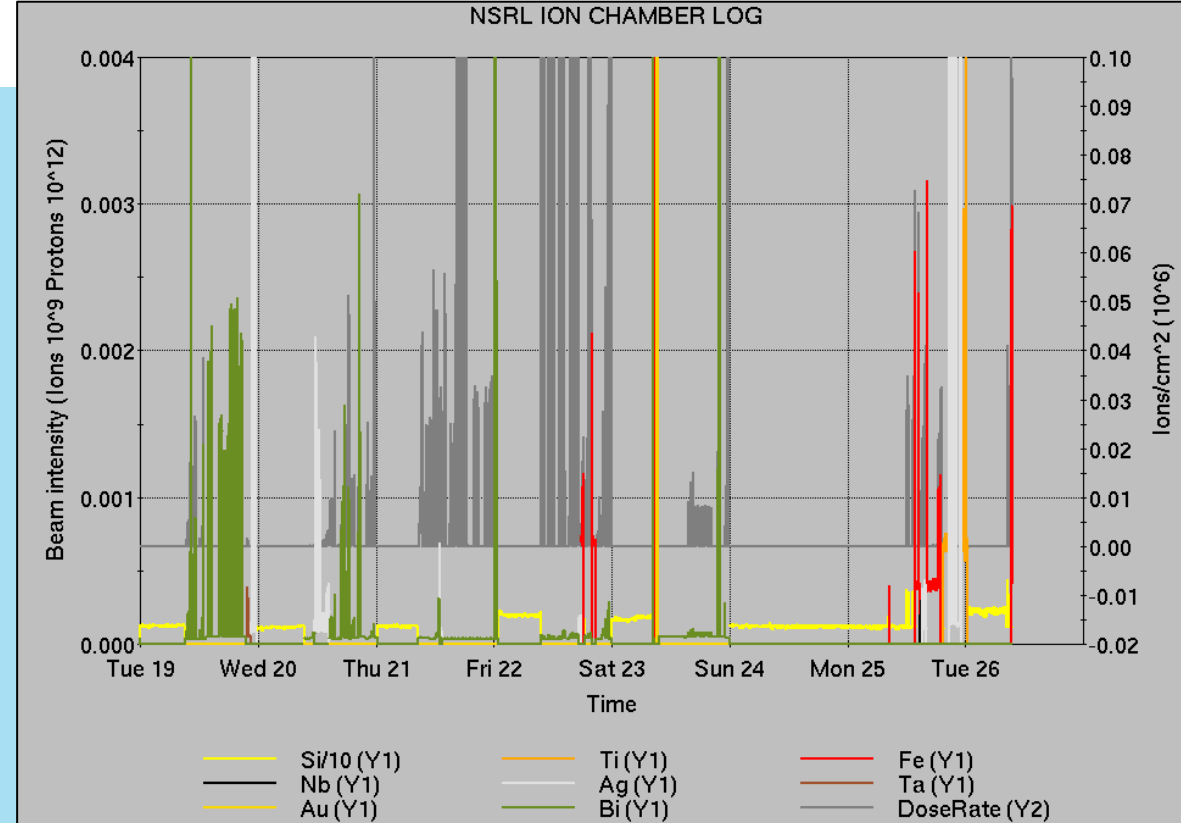
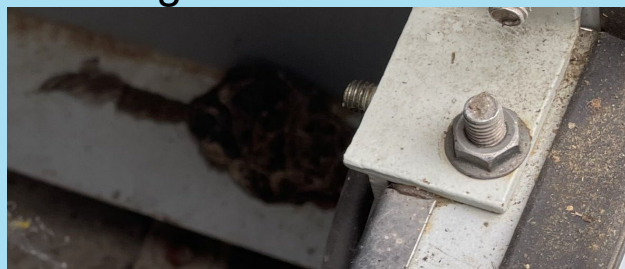
- QLI/beam abort from quench detector, 12a-qd2 QD card and PS control card replaced
- BLM permit issue, 10a-blm2 (2x)
- Cryo PLC failure sector 6, VODH communication fault; PLC power supply replaced
- NQBPS/beam abort, bi5-qf9-ps repaired
- STAR, sPHENIX accesses
- Power dip, affecting various systems; substation fuses replaced
  - sPHENIX & STAR magnet recoveries delayed
- STAR Magnet PS failure, ongoing

## Other notes

- 1002A ODH system failure, sensor replaced
- NQBPS system work caused beam abort
- AGS RF sta B still down, awaiting access
- EBIS Collector PS (4x), RFQ (5x) other PS trips
- EBIS FEC failure, cfe-930ebis-inst
- Yellow Longitudinal stochastic cooling failure, microwave link repaired
- Various network/FEC issues, resets
- Other various trips, resets, tuning, foil changes

Over 82 hours CeC beam work;  
additional injector beam for Au setup

(when injector systems are available)



	Linac	Tandem	EBIS	Booster	AGS	ATR	RHIC	ERL	Other	Total
Total	5 (229)	11 (40)	1 (5)	11 (12)	25 (20)	22 (3)	35 (15)	0 (0)	15 (12)	125 (336)
RF	0 (25)	0 (0)	0 (0)	0 (1)	2 (0)	0 (0)	3 (0)	0 (0)	9 (6)	14 (32)
PS	0 (174)	9 (5)	1 (4)	8 (2)	22 (11)	17 (3)	19 (2)	0 (0)	0 (1)	76 (202)
Vacuum	4 (17)	2 (35)	0 (1)	0 (6)	0 (2)	0 (0)	1 (10)	0 (0)	3 (2)	10 (73)
Inst	0 (0)	0 (0)	0 (0)	0 (1)	0 (2)	3 (0)	1 (3)	0 (0)	1 (1)	5 (7)
Other	1 (13)	0 (0)	0 (0)	3 (2)	1 (5)	2 (0)	11 (0)	0 (0)	2 (2)	20 (22)

# Reminder from Operations

- MCR beam operations continue as available pending STAR, PSEG work
  - RHIC physics running continues
    - Tandem (MP7) remains sole provider of Au31 for RHIC
  - NSRL shifts scheduled for users and MD, 4 days/1-2 shifts this week and next.
    - Au31 from Tandem for higher intensity; no TVDG protons established (including mode switching)
    - Linac proton beams off until November
    - Other ion beams from EBIS; proton intensities low
  - AGS tuning, other studies to continue behind stores as time allows.
  - MCR shift coverage TBD.
- **Don't forget: call MCR gate watch x7400 before you touch the gate.**
  - Not sure of the process? **Ask us.**
  - Something not working? **Tell us.**



# Availability: RHIC Run-25

