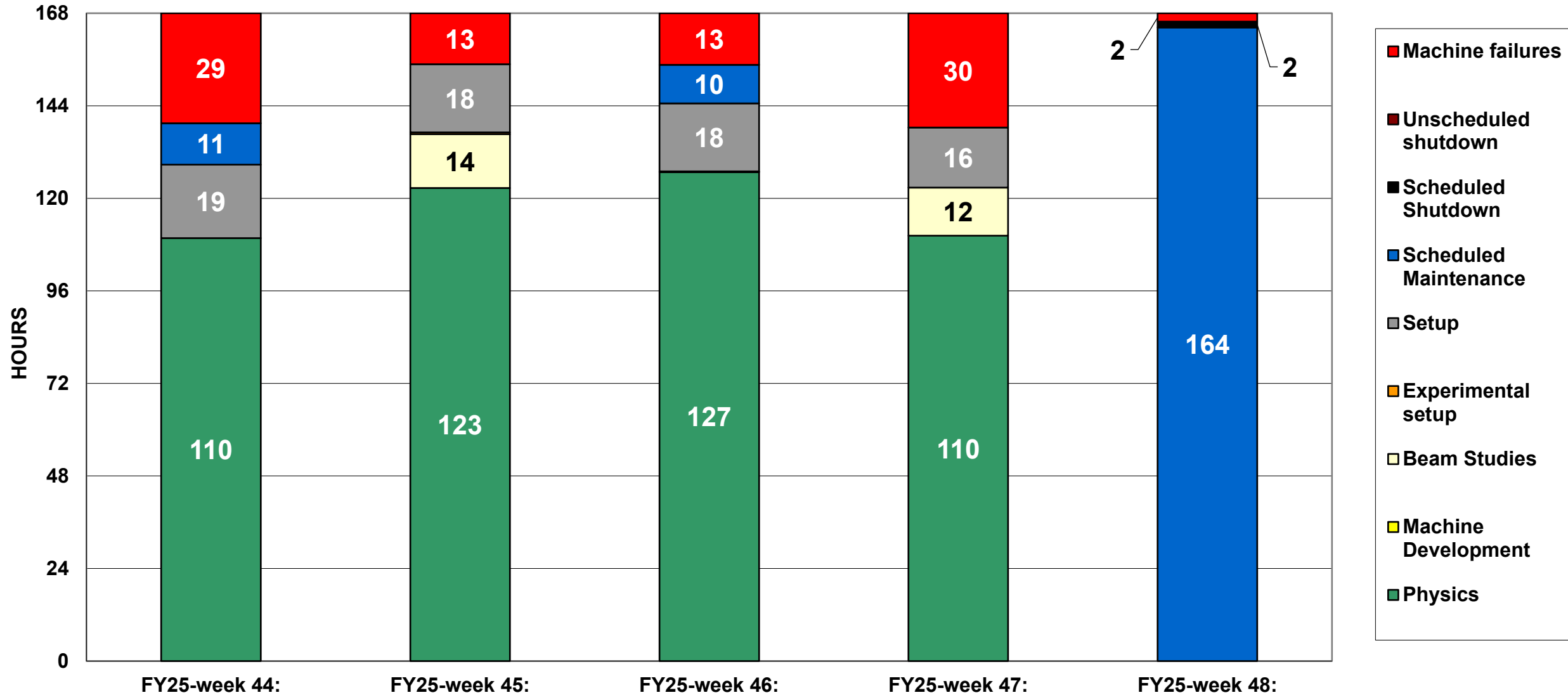
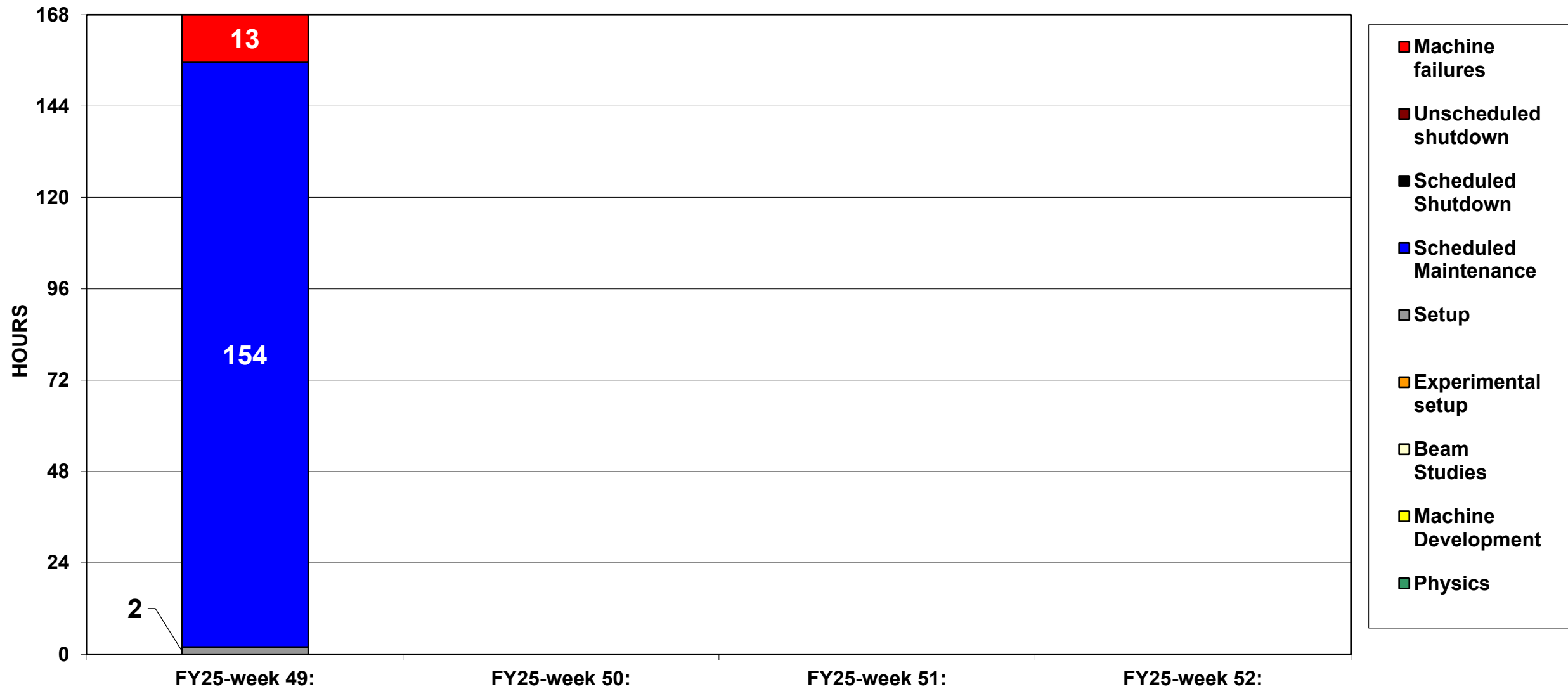


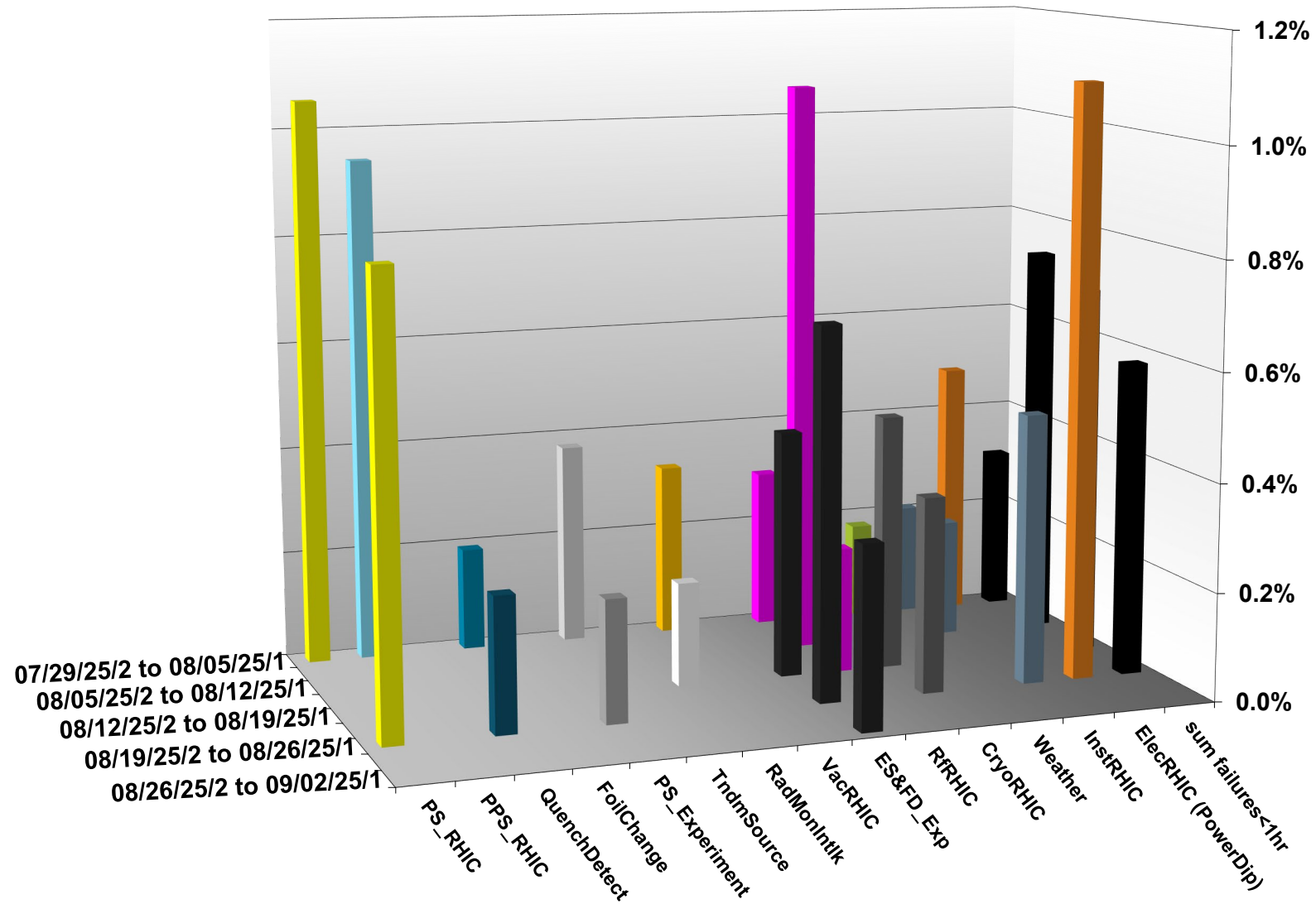
C-AD ACTIVITY AUGUST 2025



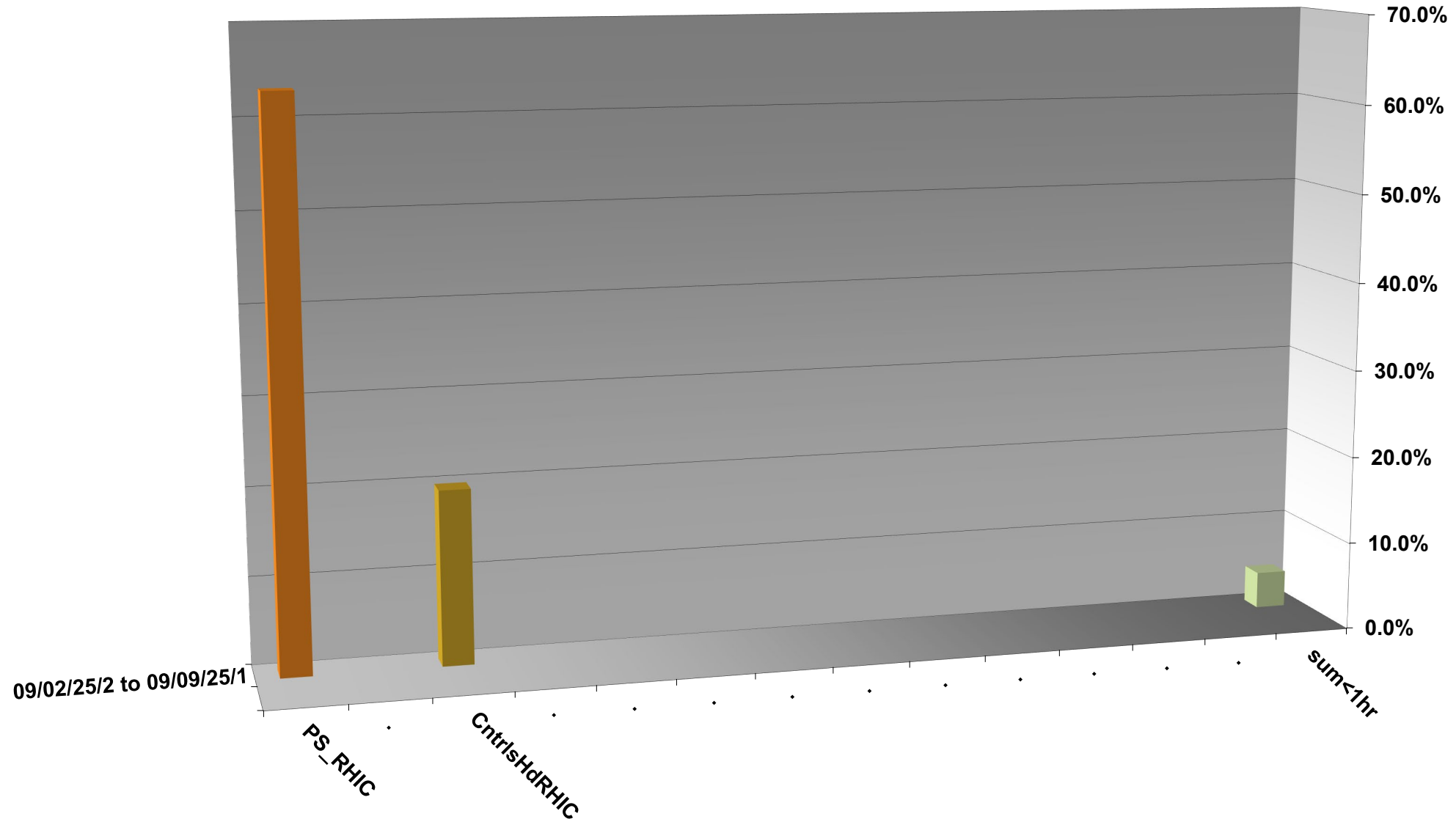
C-AD ACTIVITY SEPTEMBER 2025



INTEGRATED FAILURES (GREATER THAN ONE HOUR) BY SYSTEM -- AUGUST 2025



INTEGRATED FAILURES (GREATER THAN ONE HOUR) BY SYSTEM - SEPTEMBER 2025



NSRL activity past week: 9/2-9/2025 (as of 0800)

NSRL running continues.

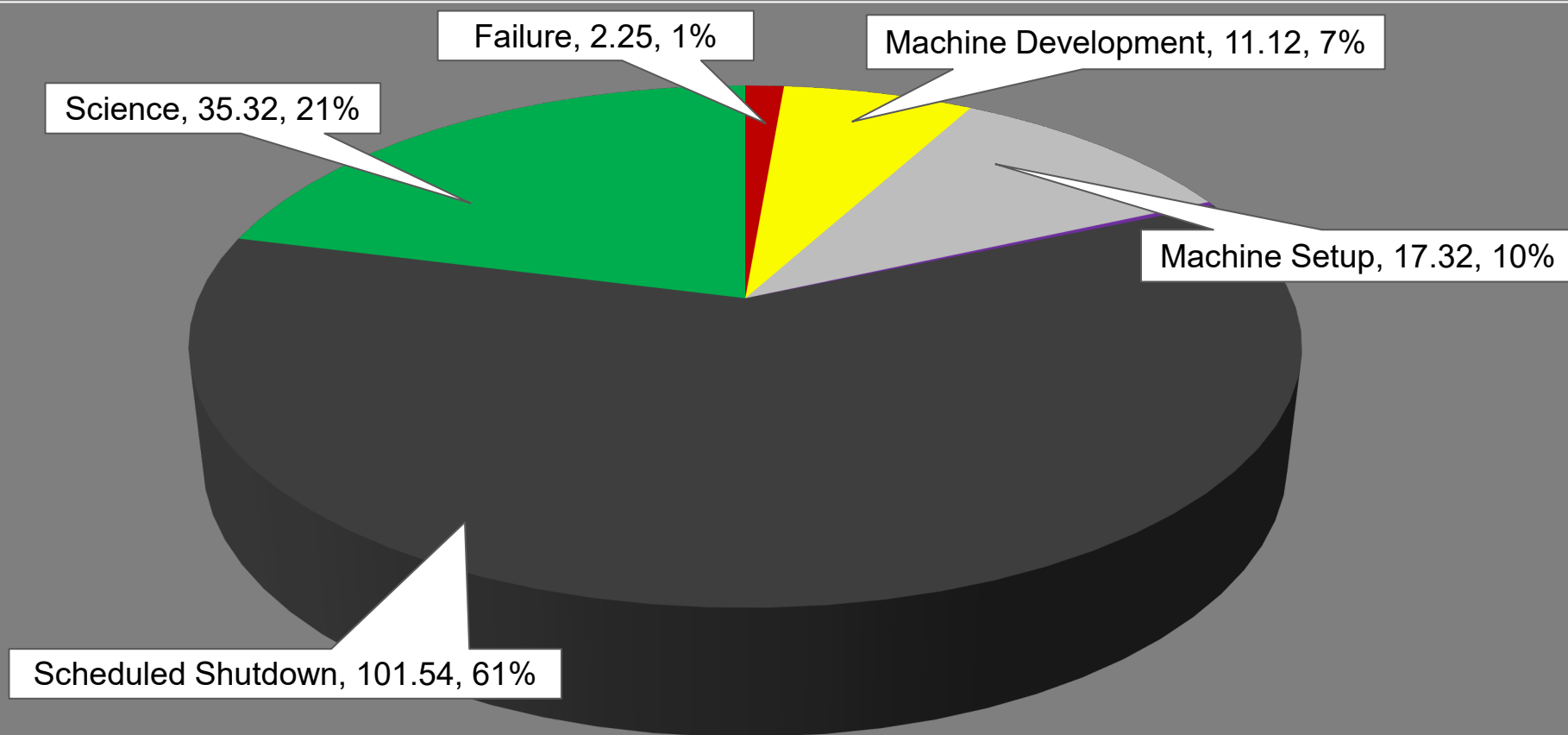
Various setup and user beam time through the week.

10 species (H, He, Si, Tb, Ti, Fe, Nb, Ag, Ta) logged to NSRL.

Run 25-C began 30 June;
25-C schedule posted,
updates forthcoming through
1 November.

Anticipating November-
February schedules

NSRL Hours



Availability: **96.6%**

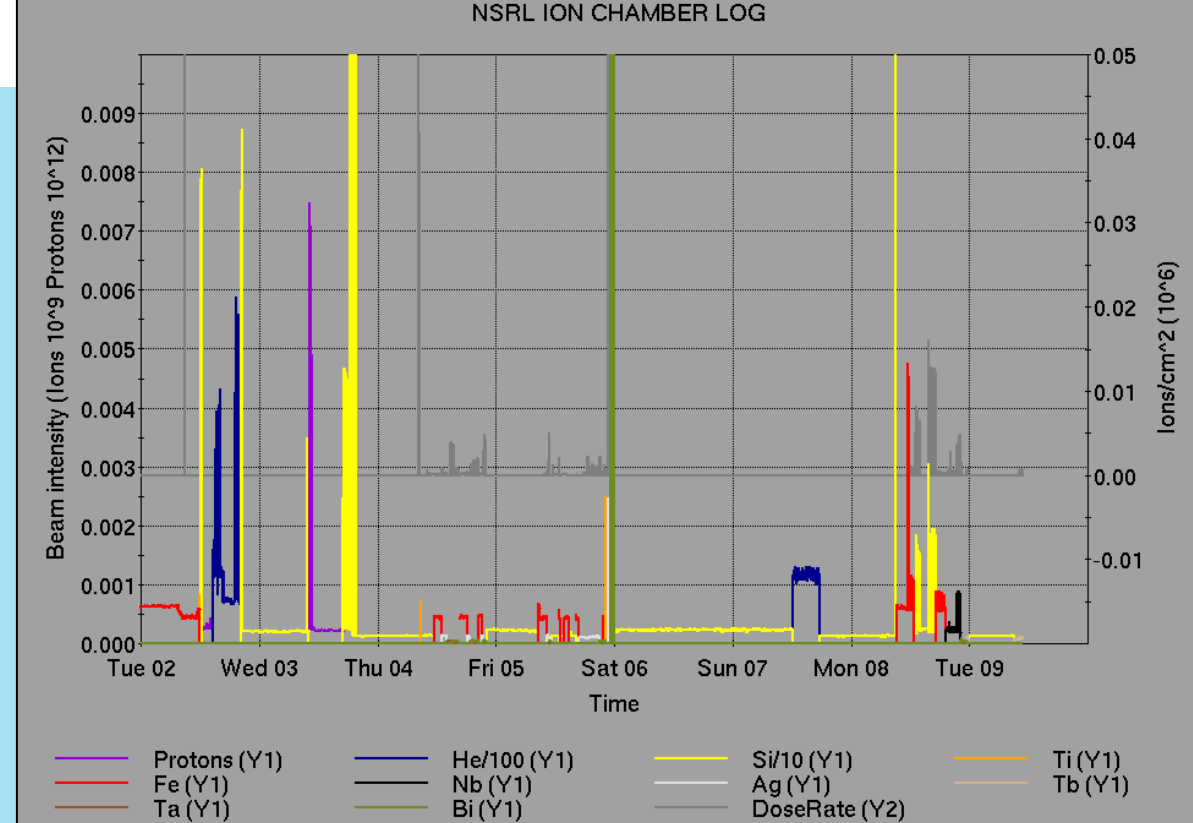
Notes from Operations

Notable failures (>1 hr)

- Recovery/restart from PSEG work, largely completed
- AtR SWM interlock, permit hardware repaired (cable)
- Booster MMPS off during STAR Magnet PS work
 - STAR Magnet PS failure ongoing
- Blue Main Dipole PS failure, ongoing

Other notes

- NSRL sector vacuum valve failure, access to replace solenoid
- EBIS RFQ trip
- RHIC YA1 RF trips, window comparator adjusted
- Other various trips, resets, tuning, foil changes



	Linac	Tandem	EBIS	Booster	AGS	ATR	RHIC	ERL	Other	Total
Total	7 (52)	3 (33)	8 (1)	6 (19)	8 (12)	15 (0)	289 (6)	0 (0)	42 (10)	378 (133)
RF	0 (19)	0 (0)	0 (0)	1 (1)	1 (0)	0 (0)	6 (0)	0 (0)	16 (6)	24 (26)
PS	0 (11)	2 (13)	5 (1)	1 (6)	6 (5)	13 (0)	256 (0)	0 (0)	1 (1)	284 (37)
Vacuum	3 (9)	1 (20)	3 (0)	1 (6)	0 (0)	0 (0)	9 (3)	0 (0)	11 (0)	28 (38)
Inst	1 (0)	0 (0)	0 (0)	1 (1)	0 (2)	1 (0)	3 (3)	0 (0)	5 (1)	11 (7)
Other	3 (13)	0 (0)	0 (0)	2 (5)	1 (5)	1 (0)	15 (0)	0 (0)	9 (2)	31 (25)

Reminder from Operations

- MCR beam operations continue
 - RHIC physics running continues
 - Tandem (MP7) remains sole provider of Au31 for RHIC
 - NSRL shifts scheduled for users **and MD**, 6-7 days/2 shifts this week and next.
 - Au31 from Tandem for higher intensity; **no TVDG protons established (including mode switching)**
 - **Linac proton beams off until November**
 - Other ion beams from EBIS; **proton intensities low**
 - AGS tuning, other studies to continue behind stores as time allows.
 - *MCR shift coverage 24/7.*

Availability: RHIC Run-25

