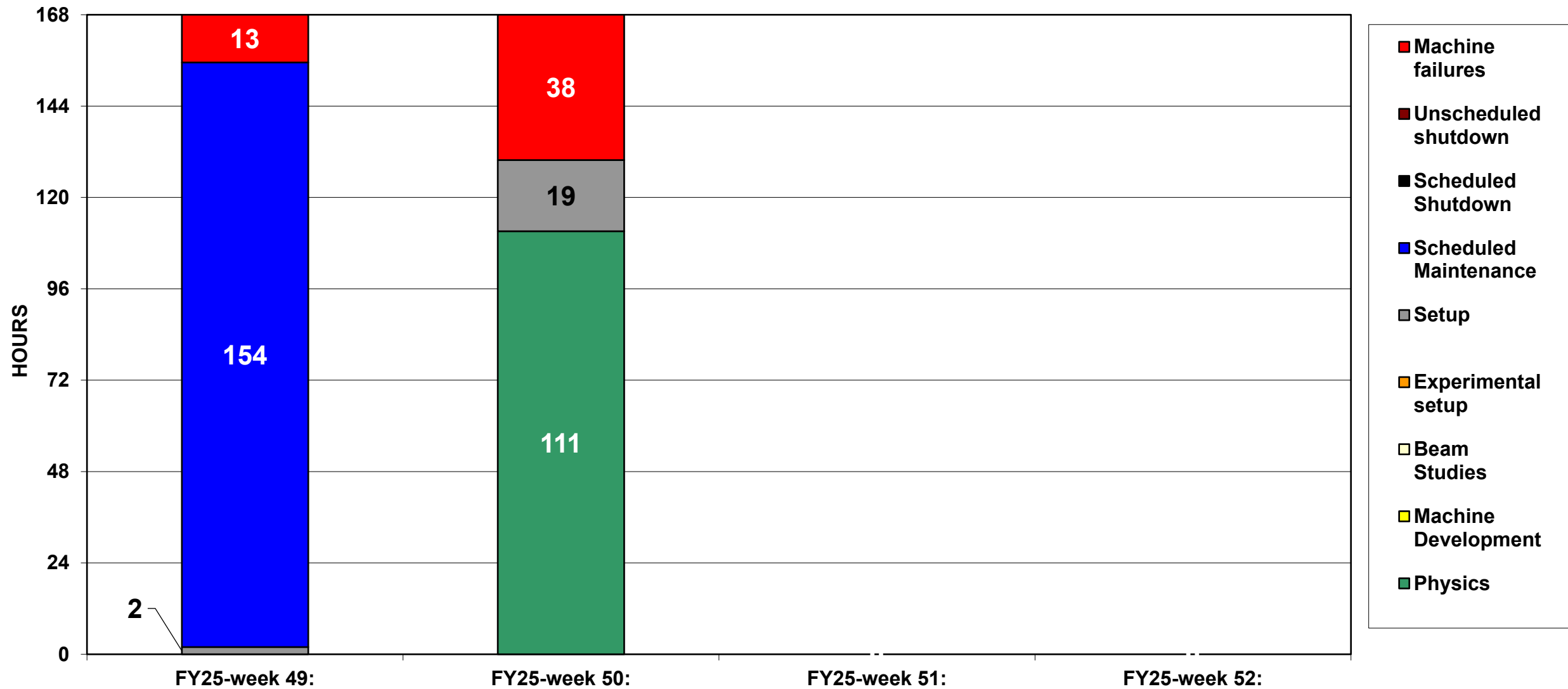
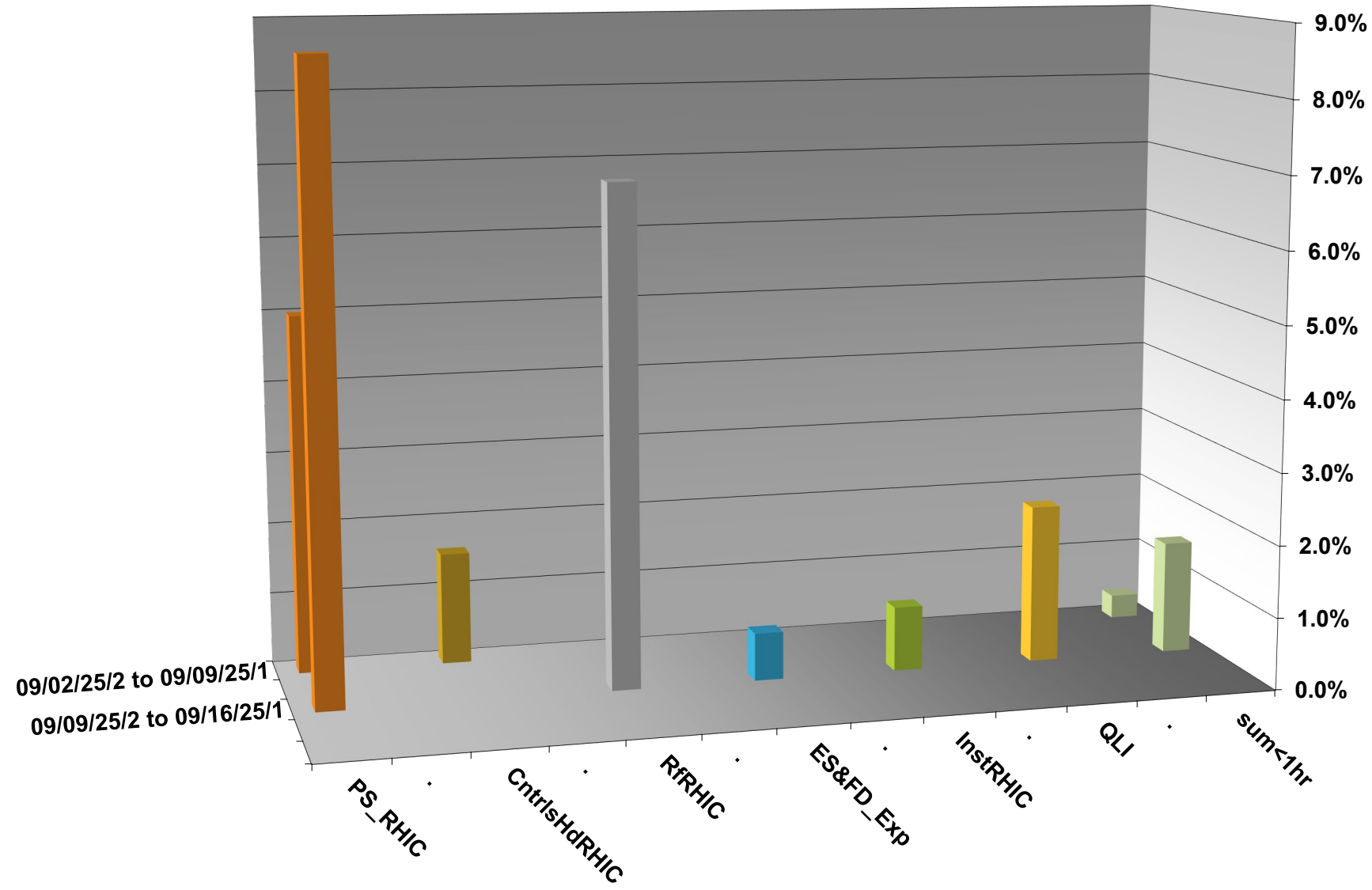


C-AD ACTIVITY SEPTEMBER 2025



INTEGRATED FAILURES (GREATER THAN ONE HOUR) BY SYSTEM - SEPTEMBER 2025



NSRL activity past week: 9/2-9/2025 (as of 0800)

NSRL running continues.

Various setup and user beam time through the week.

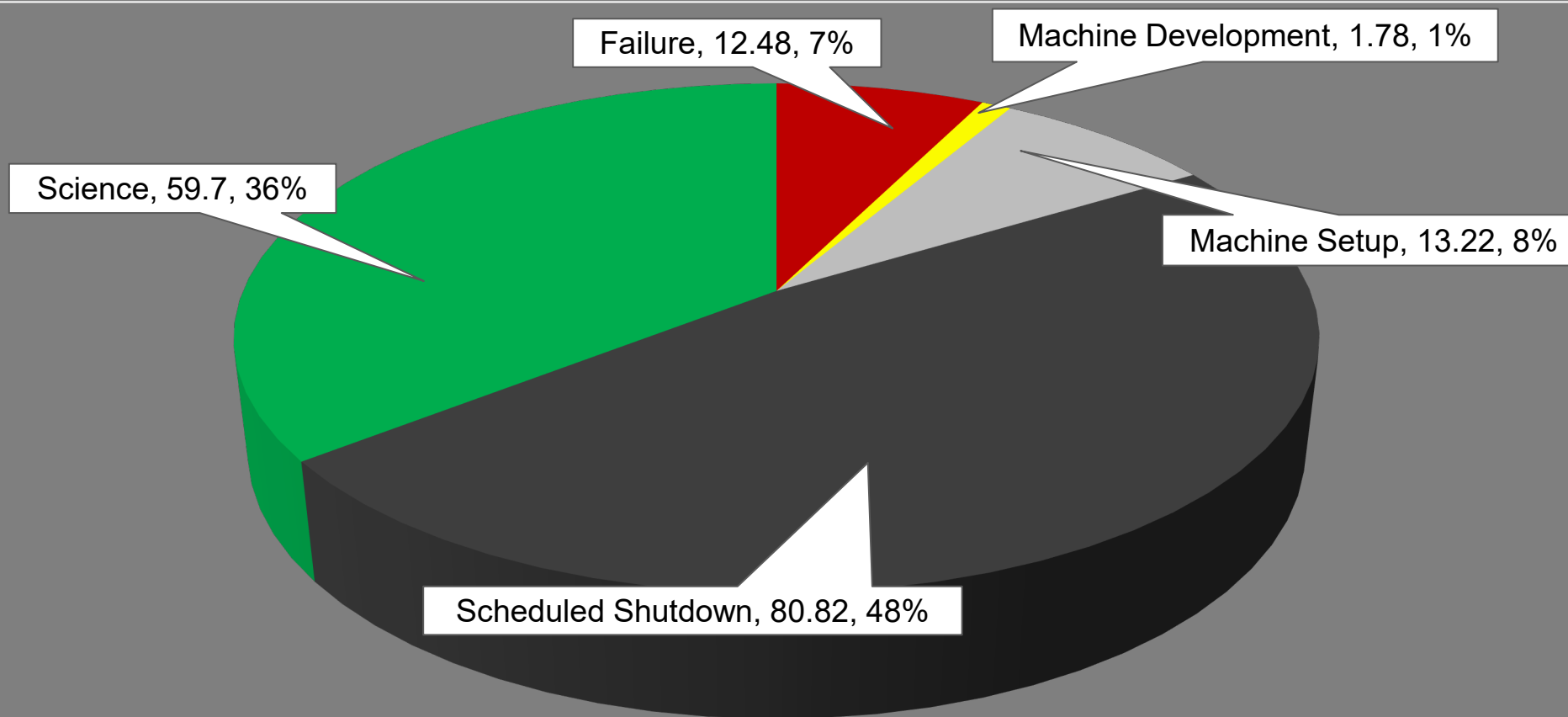
10 species (H, He, O, Si, Fe, Nb, Ag, Tb, Ta, Bi) logged to NSRL.

Run 25-C began 30 June;
25-C schedule posted,
updates forthcoming through
1 November.

Anticipating November-
March schedules

NSRL Hours

Experimental Setup	Failure	Machine Development	Machine Setup
Operator Training	Scheduled Maintenance	Scheduled Shutdown	Science



Availability: 85.7%

Notes from Operations

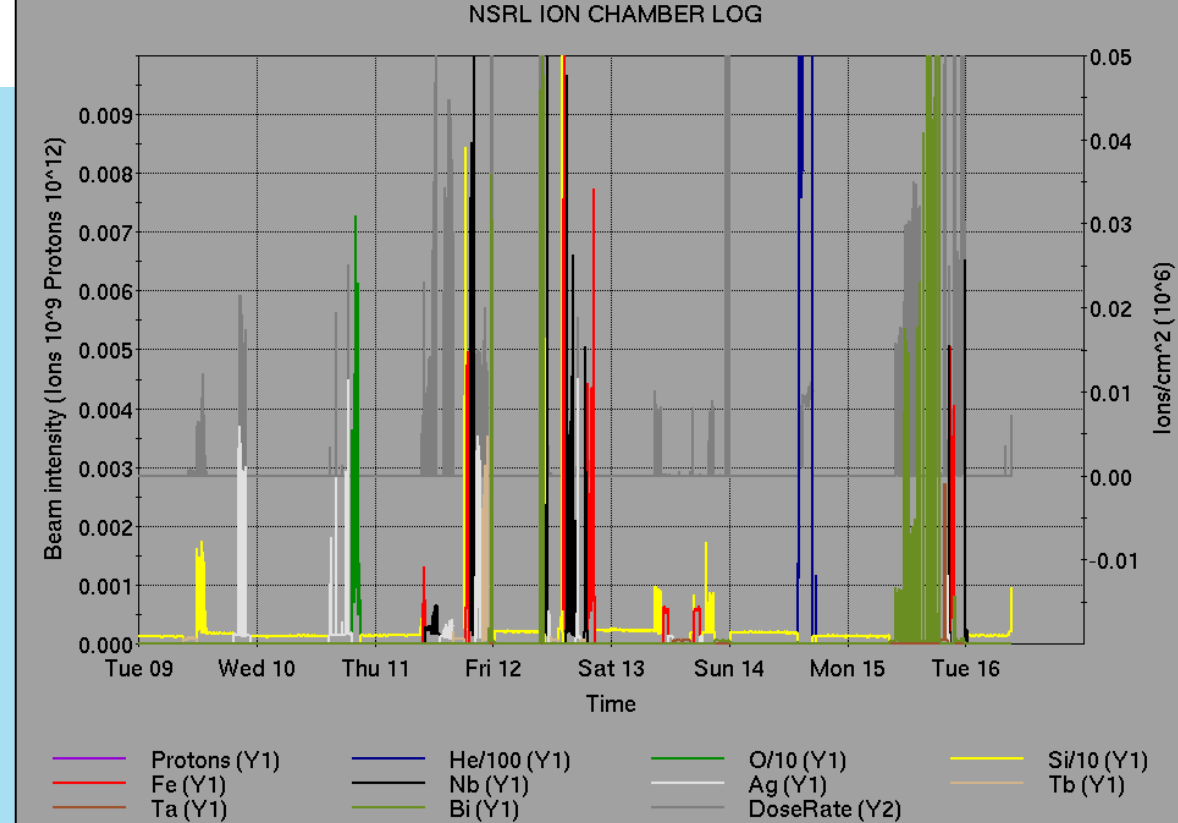
Notable failures (>1 hr)

- Blue Main Dipole PS failure, various boards and software repairs
- STAR Magnet PS failure, substation switch repairs
- Blue BA1 RF failure, PA repairs
- Booster MMPS failure, voltage stability/noise issues
- NQBPS beam abort, y09-qf2 and y6-qf7 PS card, relay repairs
- STAR fire alarm, F/R access to reset HSSD
- CeC Cryo PLC card failure, access for water blow-down issues
- Yellow+Blue QLI at store, 1010A QD systems suspected

Other notes

- BPM beam abort (2x); BBQ lost tune lock, bi12bh3 coherence glitch
- BLM abort (2x); transition Landau RF, tune feedback issues
- Blue QLI at park, main quad PS regulation error
- yd31t PS failure, tuned around during repair
- AGS vacuum fault, E15 IPM leak problem
- Yellow YA1, YA2 RF failures, QEIs replaced
- EBIS RFQ trip (5x)
- RHIC YA1 RF trips, window comparator adjusted
- Collimator, Stochastic Cooling, CPSBPS manager system problems
- Other various trips, resets, tuning, foil changes

Over 58 hours CeC beam time; other injector setup, training behind stores time allows



	Linac	Tandem	EBIS	Booster	AGS	ATR	RHIC	ERL	Other	Total
Total	5 (50)	4 (49)	8 (1)	6 (18)	10 (14)	5 (0)	215 (6)	0 (0)	20 (9)	273 (147)
RF	0 (19)	0 (0)	0 (0)	1 (1)	1 (0)	0 (0)	4 (0)	0 (0)	9 (6)	15 (26)
PS	0 (11)	1 (29)	5 (1)	0 (6)	5 (7)	1 (0)	4 (0)	0 (0)	2 (1)	18 (55)
Vacuum	2 (9)	3 (20)	3 (0)	1 (6)	1 (0)	0 (0)	13 (3)	0 (0)	3 (0)	26 (38)
Inst	0 (0)	0 (0)	0 (0)	0 (1)	2 (2)	4 (0)	2 (3)	0 (0)	1 (1)	9 (7)
Other	3 (11)	0 (0)	0 (0)	4 (4)	1 (5)	0 (0)	192 (0)	0 (0)	5 (1)	205 (21)

Reminder from Operations

- MCR beam operations continue
 - RHIC physics running continues
 - Tandem (MP7) remains sole provider of Au31 for RHIC
 - Note RHIC Tour anticipated 9/30
 - NSRL shifts scheduled for users **and MD**, generally 6-7 days/2 shifts in weeks upcoming.
 - Au31 from Tandem for higher intensity; **no TVDG protons established (including mode switching)**
 - Other ion beams from EBIS; **H₂ intensities nearly sufficient to deliver H**
 - **No BLIP published schedules yet**
 - **Linac proton beams off until November**
 - AGS tuning, other studies to continue behind stores as time allows
 - AGS/AtR 3.85 GeV Au **setup TBD**
 - *MCR shift coverage 24/7.*

Availability: RHIC Run-25

