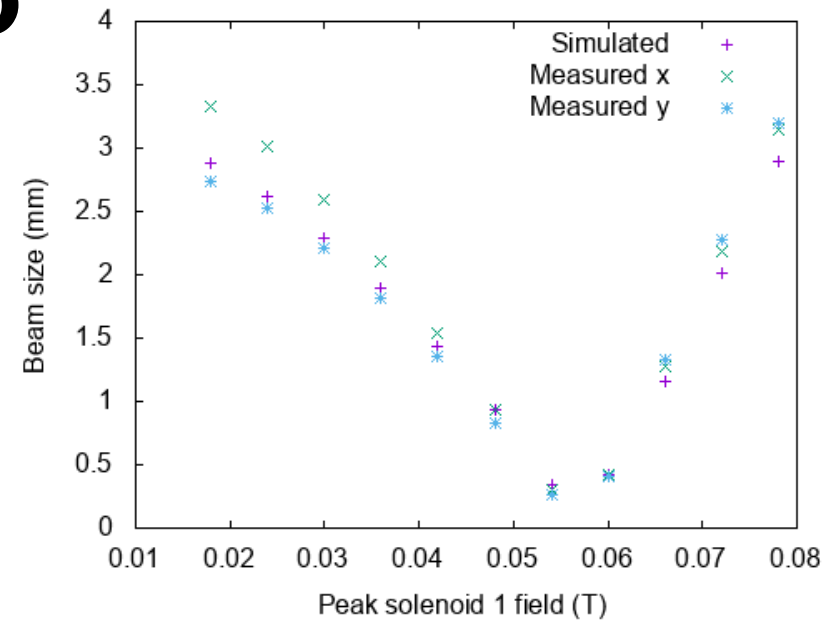


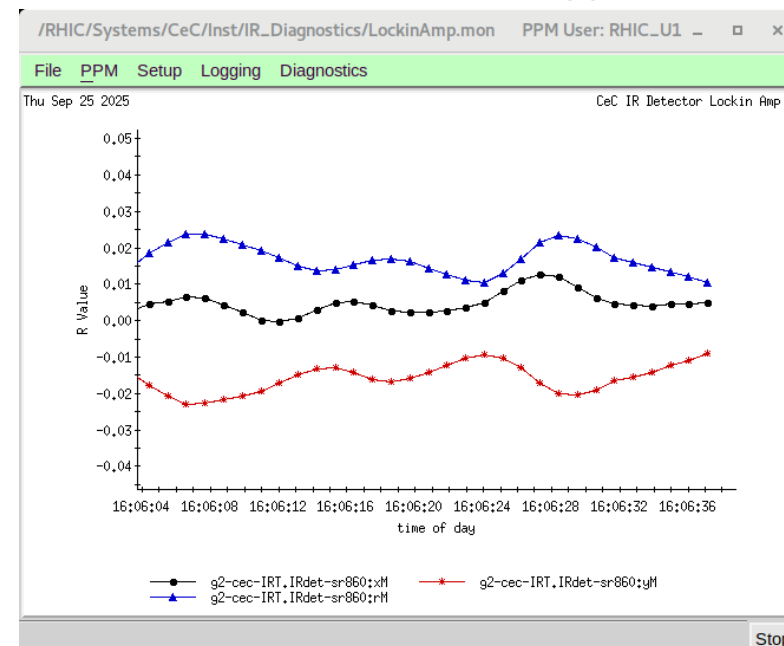
CeC status – 9/30/25

Working on beam matching in preparation for PCA and cooling.

- Benchmark simulated beam size on yag screens with measured one.
- Developed a method to repeatably measure matching quadrupoles' offsets regardless of upstream magnets/RF setup. Helps to physically realign quads to minimize beam distortion by BBA through magnet centers.
- Continue to work on seeing radiation signals from available detectors.
- Bolometer's (most sensitive detector) problem identified and repair is planned this week.



Simulated within 5% error with average of x and y



IR signal from pyro detector, bunching voltage reduced to 156 kV, close to our nominal for PCA demonstration