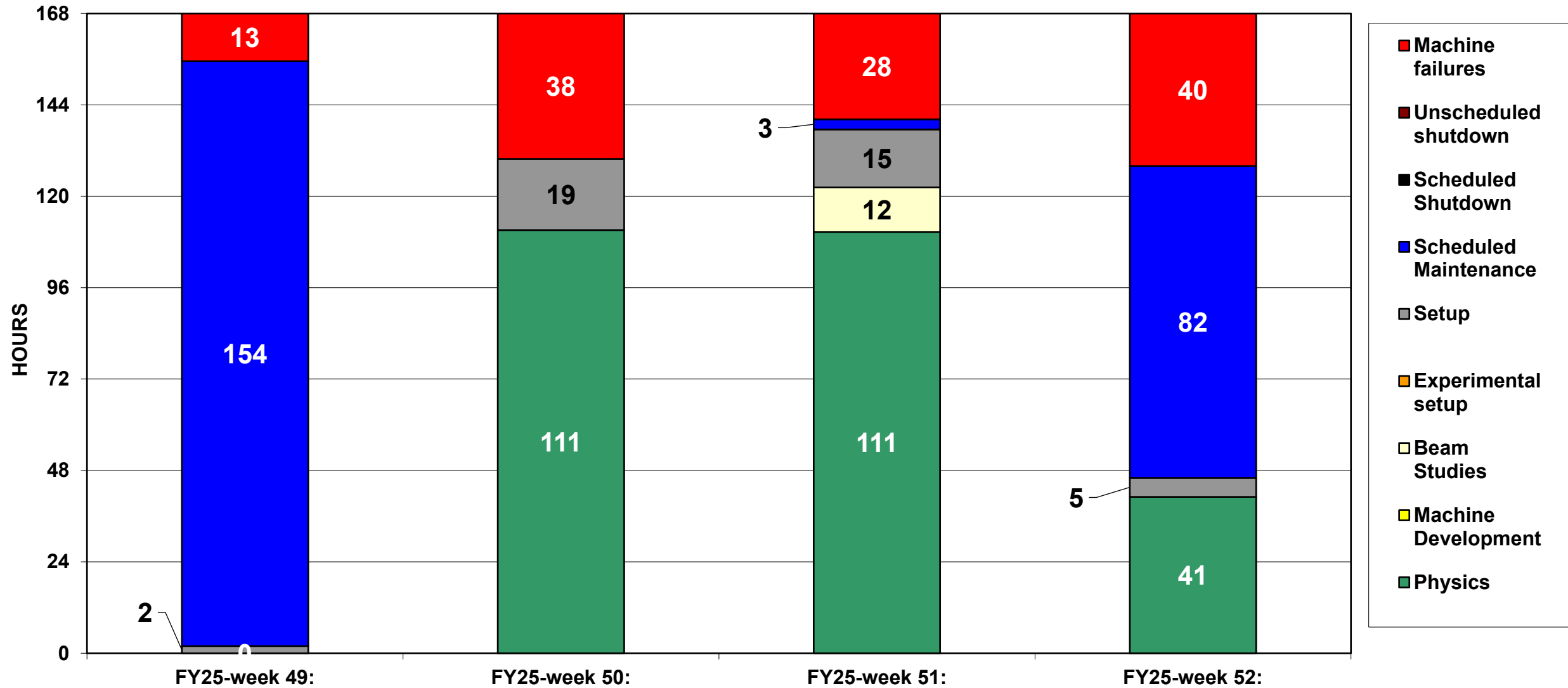
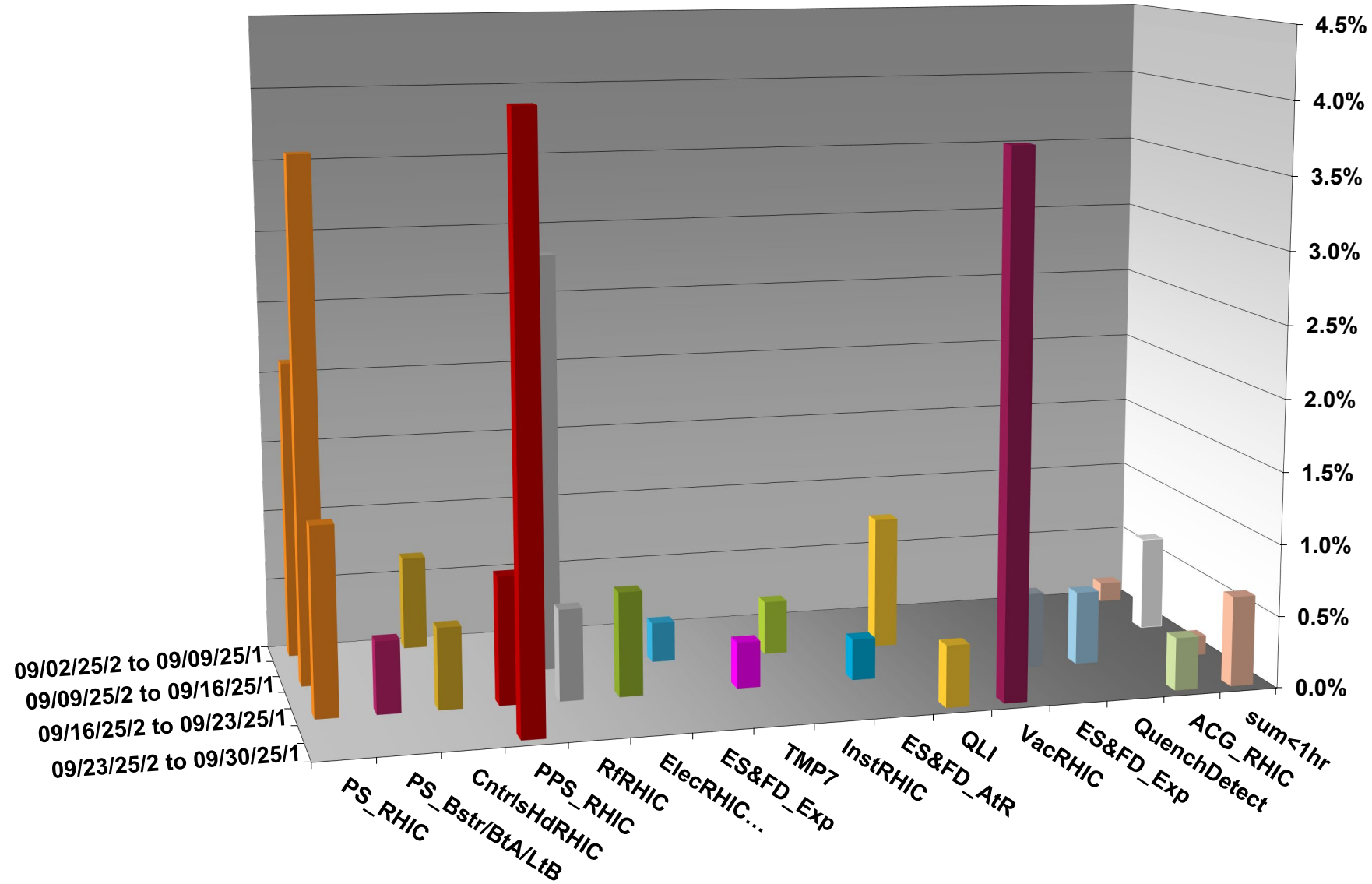


C-AD ACTIVITY SEPTEMBER 2025



INTEGRATED FAILURES (GREATER THAN ONE HOUR) BY SYSTEM - SEPTEMBER 2025



NSRL activity past week: 9/23-30/2025 (as of 0800)

NSRL running continues.

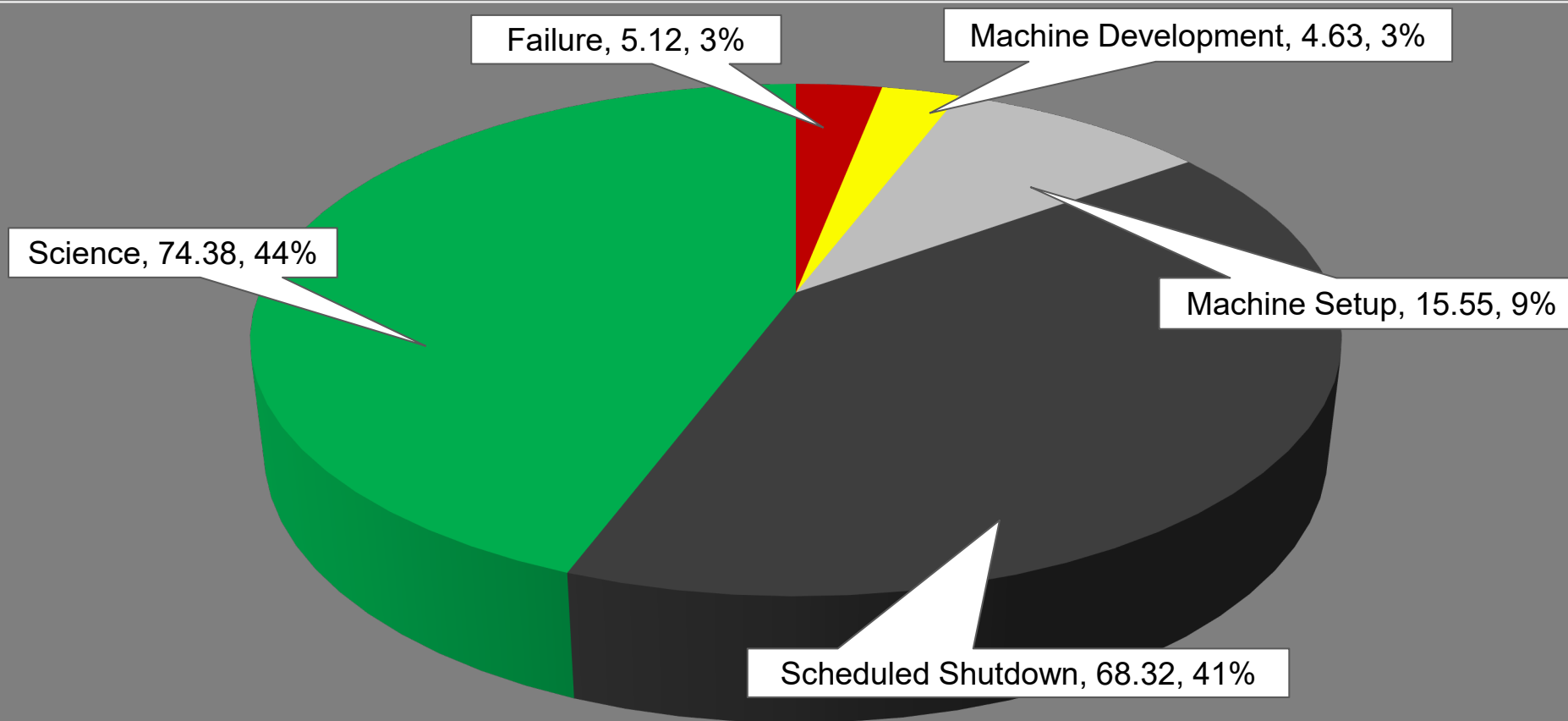
Various setup and user beam time through the week.

10 species (H, He, O, Si, Fe, Nb, Ag, Tb, Ta, Bi) logged to NSRL.

Run 25-C began 30 June; concludes. **updates forthcoming** through 31 October.

Run 26-A **schedule posted** with users up to 19 December.

NSRL Hours



Availability: 94.9%

Notes from Operations

Notable failures (>1 hr)

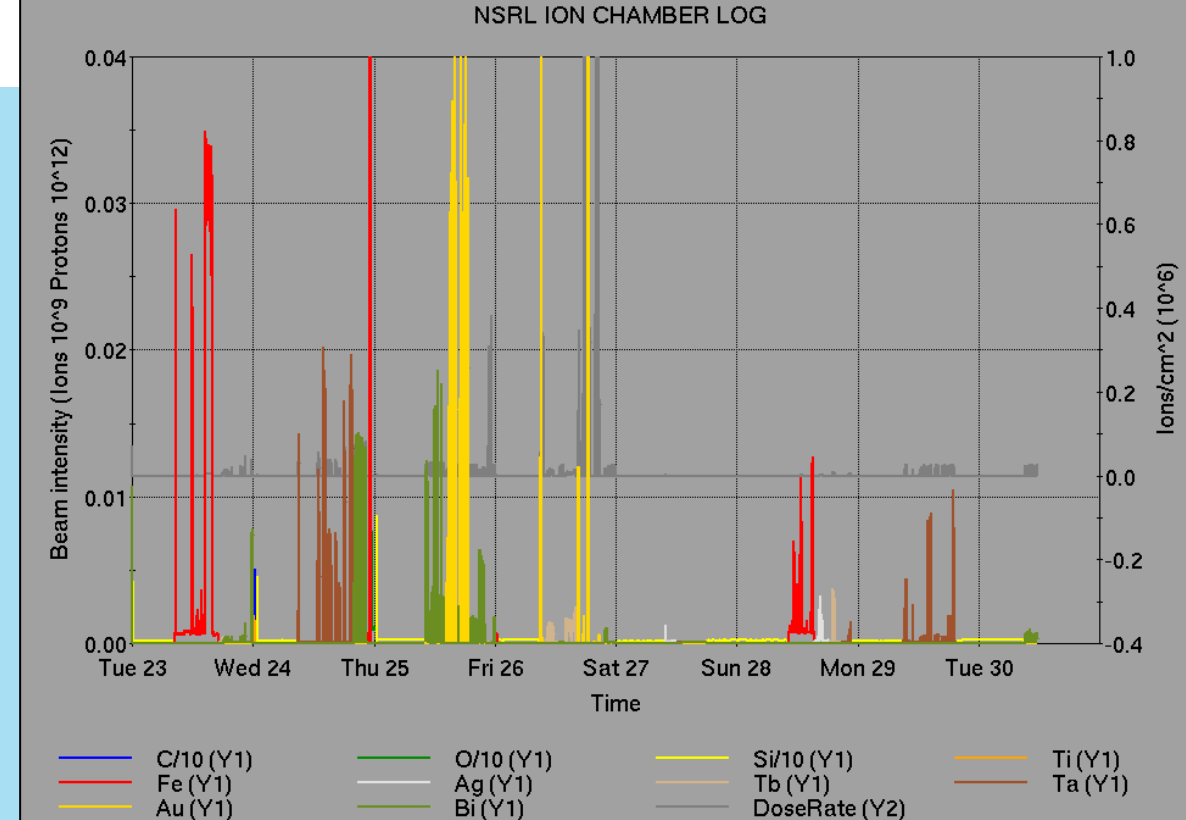
- ODH system failure sector 10 during maintenance day, Fire/Rescue access; ACS replaced PS
- EBIS drift tube 19 PS failure, replaced with spare
- Beam-induced quench; anomalous Yellow abort kicker prefire caused vacuum leak at dump; repairs ongoing, abort system diagnosis pending
 - Subsequent ODH sensor failures/response to Sectors 8, 12

Other notes

- BPM abort, Blue corrector PS trip
- STAR access for Fire/Rescue HSSD trip
- RHIC BS3 RF crowbar trip, breaker reset (2x); addressed during extended maintenance
- EBIS RFQ (5x), Collector (4x) trips
- BtA QF14 PS failure, ongoing; retuned line
- Other various trips, resets, tuning, foil changes

Over 60 hours CeC beam time;

other injector setup, training behind stores



	Linac	Tandem	EBIS	Booster	AGS	ATR	RHIC	ERL	Other	Total
Total	9 (46)	13 (28)	2 (6)	18 (11)	210 (12)	89 (0)	511 (4)	0 (0)	19 (9)	871 (116)
RF	0 (19)	0 (0)	0 (0)	1 (1)	1 (0)	0 (0)	6 (0)	0 (0)	1 (6)	9 (26)
PS	0 (10)	12 (5)	1 (4)	12 (1)	206 (5)	88 (0)	87 (0)	0 (0)	3 (2)	409 (27)
Vacuum	6 (4)	1 (23)	1 (2)	0 (7)	0 (0)	0 (0)	22 (1)	0 (0)	11 (0)	41 (37)
Inst	1 (0)	0 (0)	0 (0)	0 (1)	0 (2)	0 (0)	12 (3)	0 (0)	1 (1)	14 (7)
Other	2 (13)	0 (0)	0 (0)	5 (1)	3 (5)	1 (0)	384 (0)	0 (0)	3 (0)	398 (19)

Tue Sep 30 11:42:48 EDT 2025

Reminder from Operations

- MCR beam operations continue
 - RHIC physics resumption TBD
 - Tandem (MP7) remains sole provider of Au31 for RHIC
 - Beam operations pending availability of Blue beam, abort kicker diagnostics
 - NSRL shifts scheduled for users, MD, and NASA biology, 7 days/2 shifts this week.
 - Au31 from Tandem for higher intensity; no TVDG protons established (including mode switching)
 - Other ion beams from EBIS; H₂ intended for H delivery
 - No BLIP published schedules yet
 - Linac proton beams off until November
 - AGS tuning, other studies to continue behind stores as time allows
 - AGS/AtR 3.85 GeV Au setup TBD
 - *MCR shift coverage 24/7 when RHIC resumes.*

Availability: RHIC Run-25

