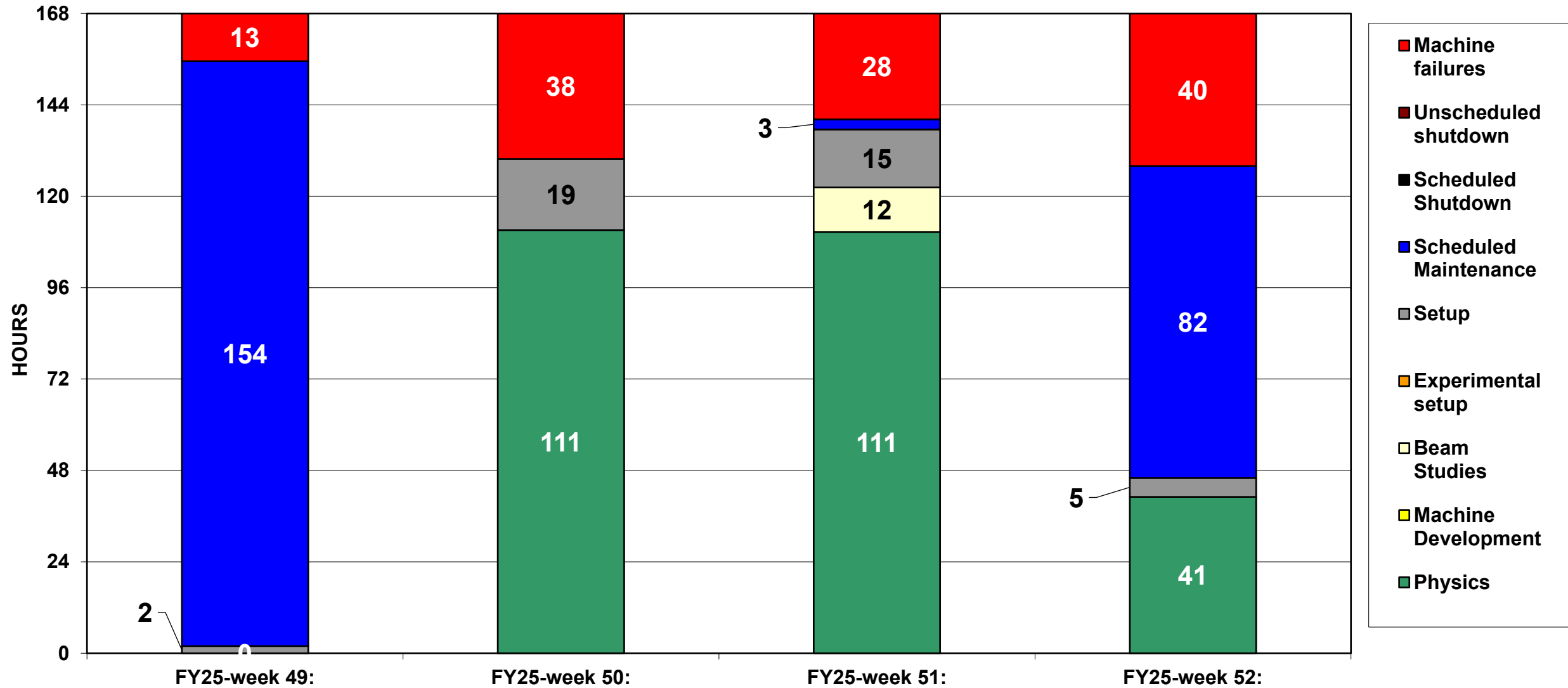
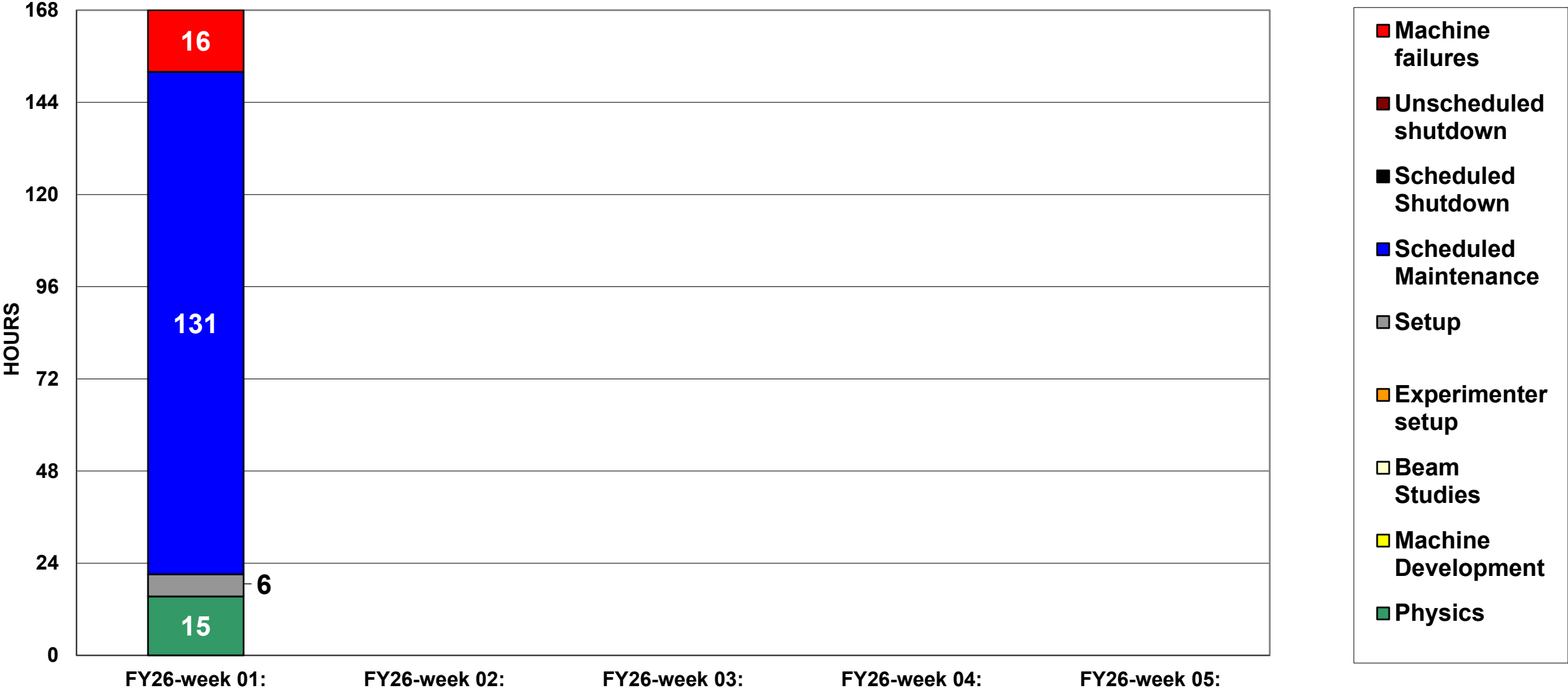


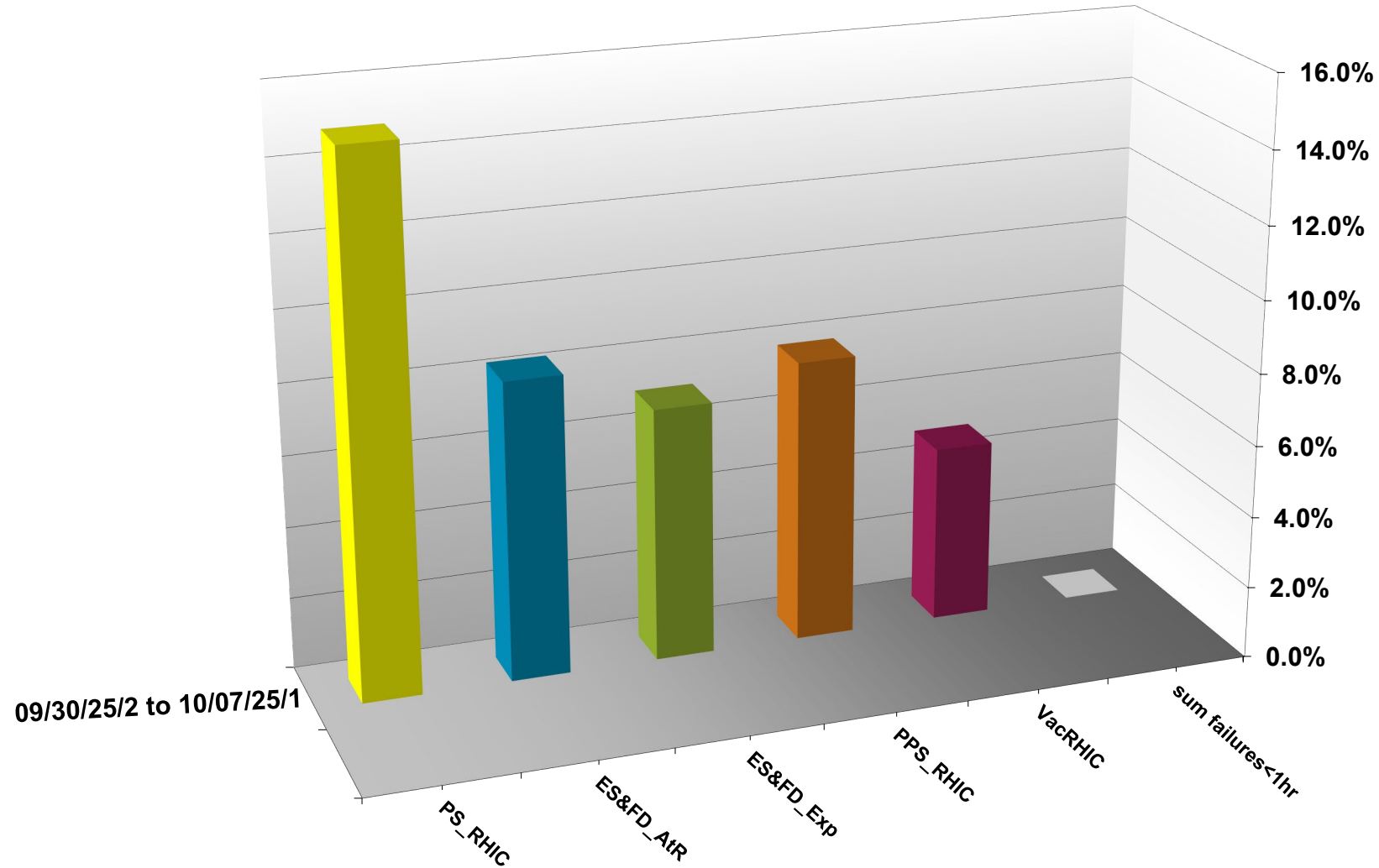
# C-AD ACTIVITY SEPTEMBER 2025



# C-AD ACTIVITY    October 2025



## INTEGRATED FAILURES (GREATER THAN ONE HOUR) BY SYSTEM -- October 2025



# NSRL activity past week: 9/30-10/6/2025 (as of 0800)

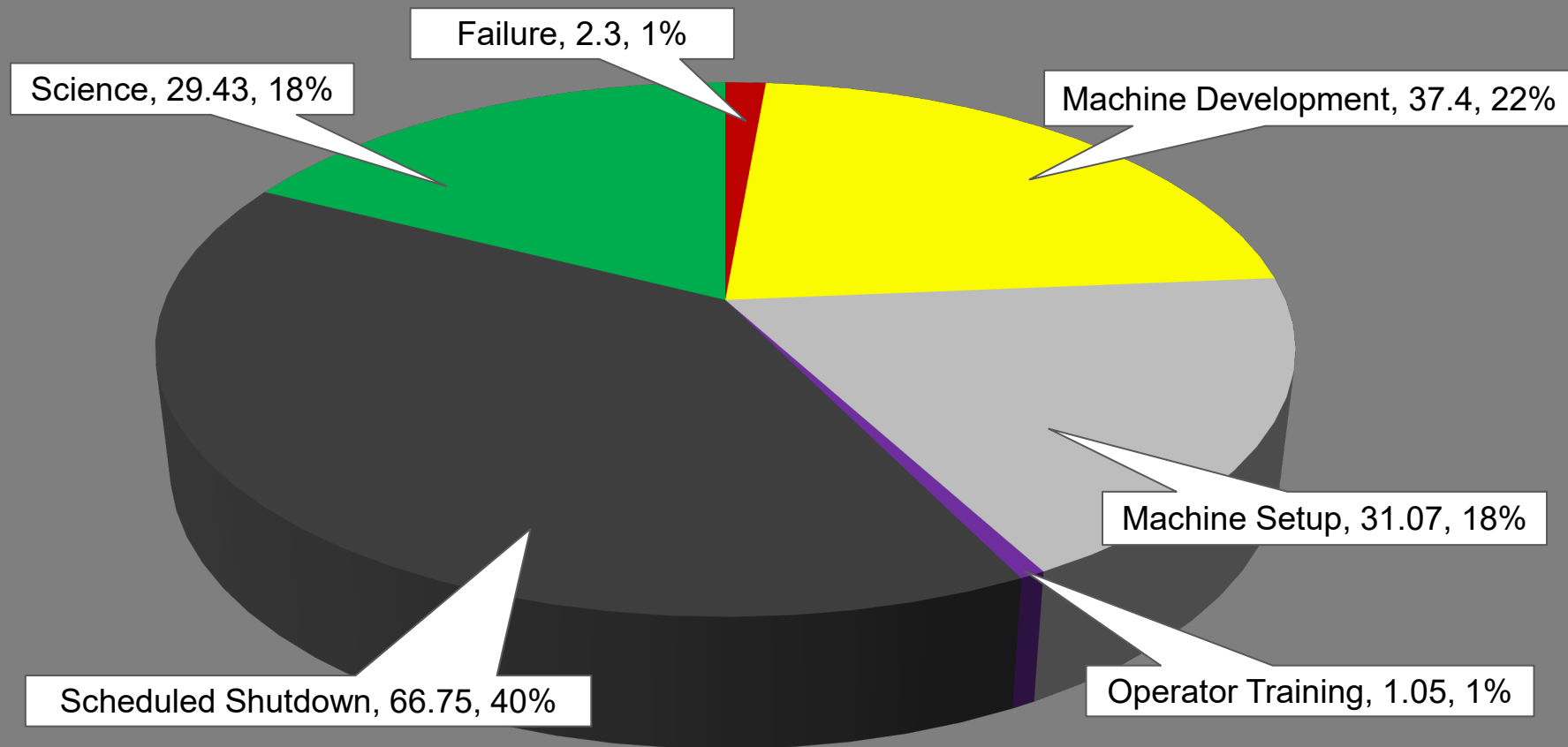
NSRL running continues.

Various setup and user beam time through the week.

11 EBIS species (H, d, He, C, O, Si, Ti, Fe, Nb, Ag, Bi) logged to NSRL.

Run 25-C began 30 June; concludes 31 October.  
Run 26-A **schedule posted** with users up to 19 December.

## NSRL Hours



# Notes from Operations

## Notable failures (>1 hr)

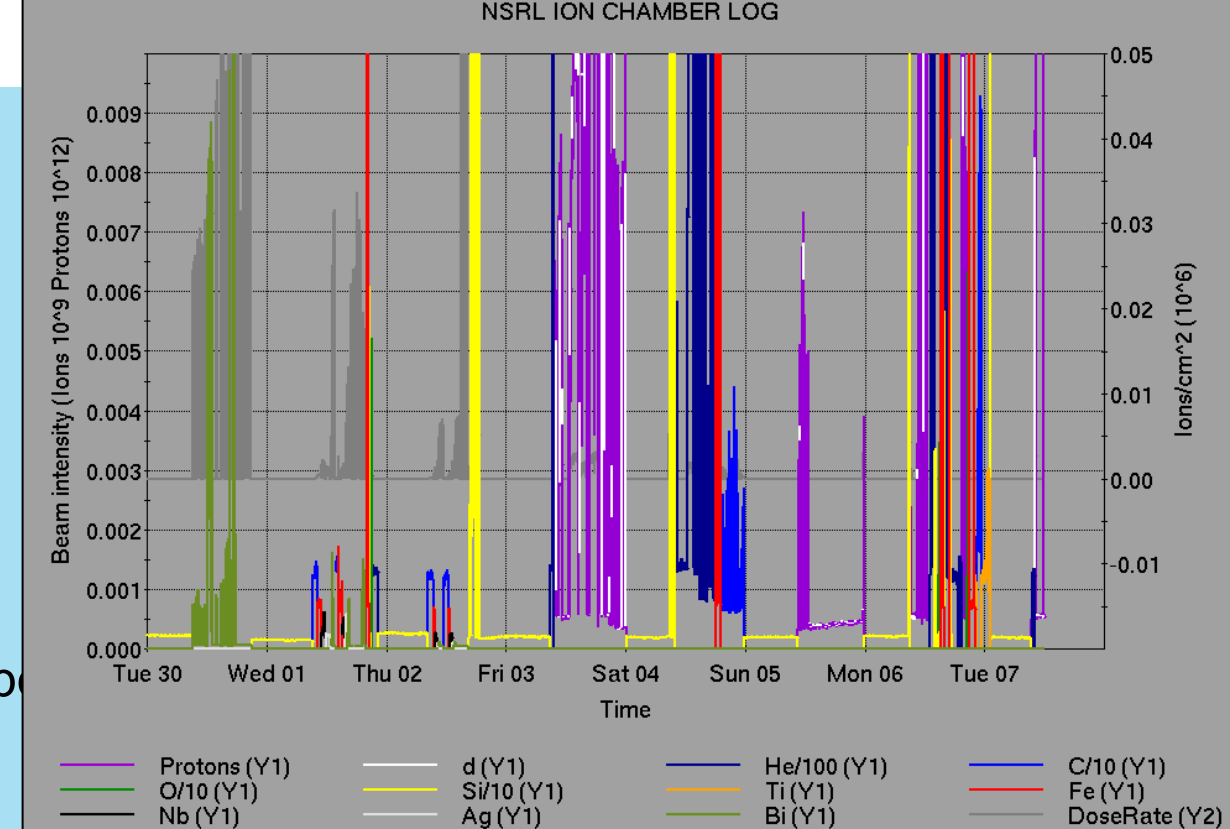
- Atr X, Y arc magnet cooling faults, access for flow switches; PLC connections repaired
- Yellow QLI at store, y6-q7-ps regulator card replaced
- Blue abort kicker failure during hysteresis ramp, local reset
- Access for
  - Vacuum Group bakeout equipment removal
  - STAR water leak indicator/TOF work
  - Pulsed Power Group replace capacitor, Yellow abort kicker module 1
- EBIS RFQ trips (3x)
- Yellow QLI, main quad oscillations
- Yellow QLI, y4-q89 crowbar fault

## Other notes

- EBIS MPS trip on He/H2 switching issues
- BTA qf14 PS ground fault repaired
- Other various trips, resets, tuning, foil changes

Over 74 hours CeC beam time;

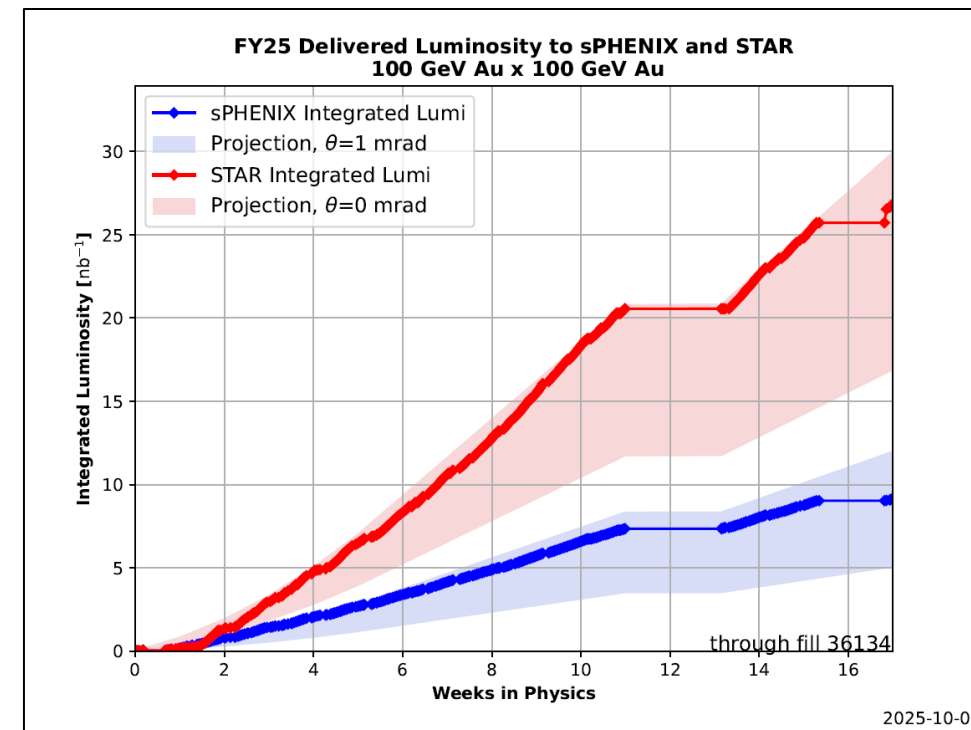
other injector setup, training behind stores



	Linac	Tandem	EBIS	Booster	AGS	ATR	RHIC	ERL	Other	Total
Total	4 (43)	20 (20)	4 (6)	3 (23)	6 (14)	23 (0)	419 (5)	0 (0)	11 (10)	490 (121)
RF	0 (19)	0 (0)	0 (0)	1 (1)	1 (0)	0 (0)	7 (0)	0 (0)	8 (6)	17 (26)
PS	0 (10)	12 (5)	0 (4)	1 (10)	4 (7)	18 (0)	24 (0)	0 (0)	1 (2)	60 (38)
Vacuum	2 (2)	8 (15)	1 (2)	0 (7)	0 (0)	0 (0)	11 (2)	0 (0)	0 (0)	22 (28)
Inst	0 (0)	0 (0)	0 (0)	0 (1)	0 (2)	4 (0)	2 (3)	0 (0)	1 (1)	7 (7)
Other	2 (12)	0 (0)	3 (0)	1 (4)	1 (5)	1 (0)	375 (0)	0 (0)	1 (1)	384 (22)

# Reminder from Operations

- MCR beam operations continue
  - RHIC physics resumes
    - Tandem (MP7) remains sole provider of Au31 for RHIC
  - NSRL shifts scheduled for users, MD, and NASA biology, 6, 5 days/1-2 shifts this week and next.
    - Au31 from Tandem for higher intensity
    - Other ion beams from EBIS;  $H_2$  intended for H delivery
  - No BLIP published schedules yet
    - Linac proton beams off until November.
      - ORC in progress.
  - AGS tuning, other studies to continue behind stores as time allows
    - AGS/AtR 3.85 GeV Au setup TBD
  - MCR shift coverage 24/7.



# Availability: RHIC Run-25

