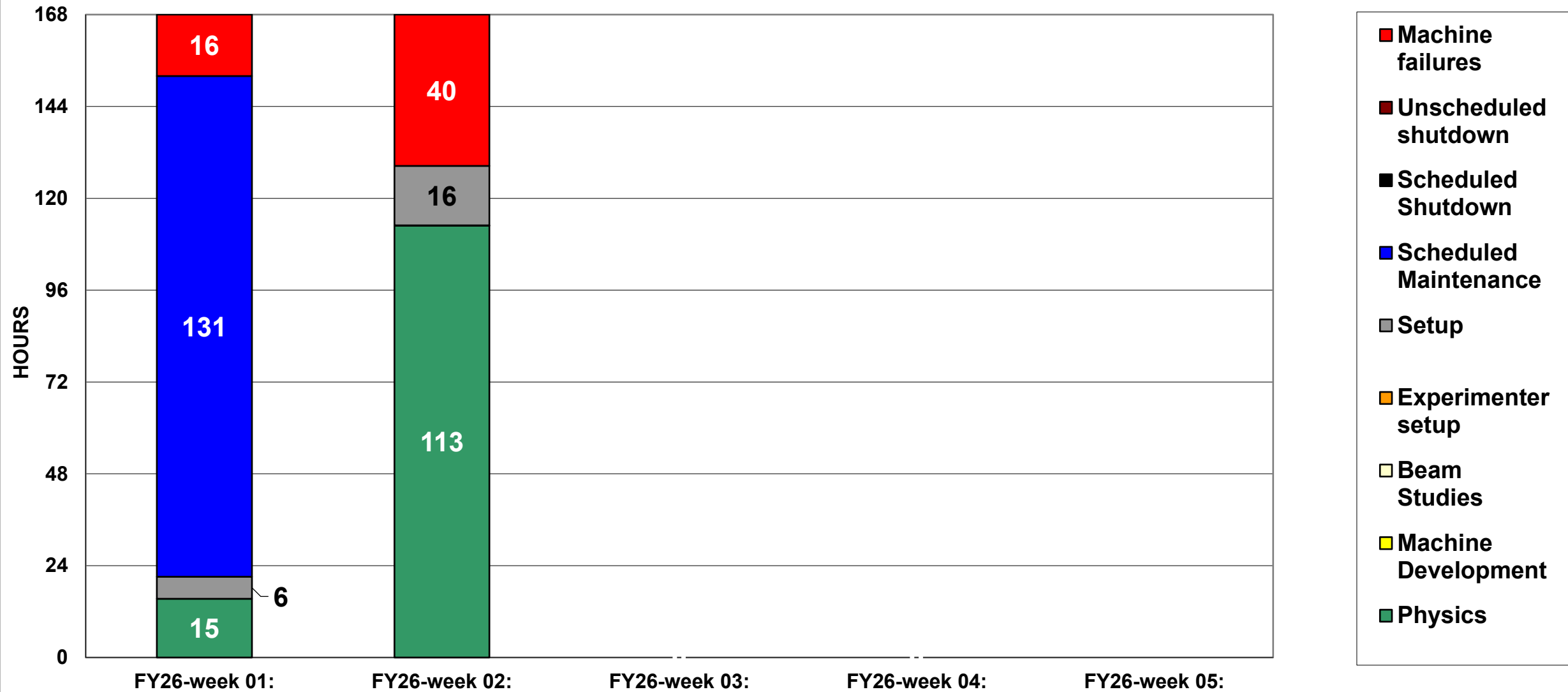
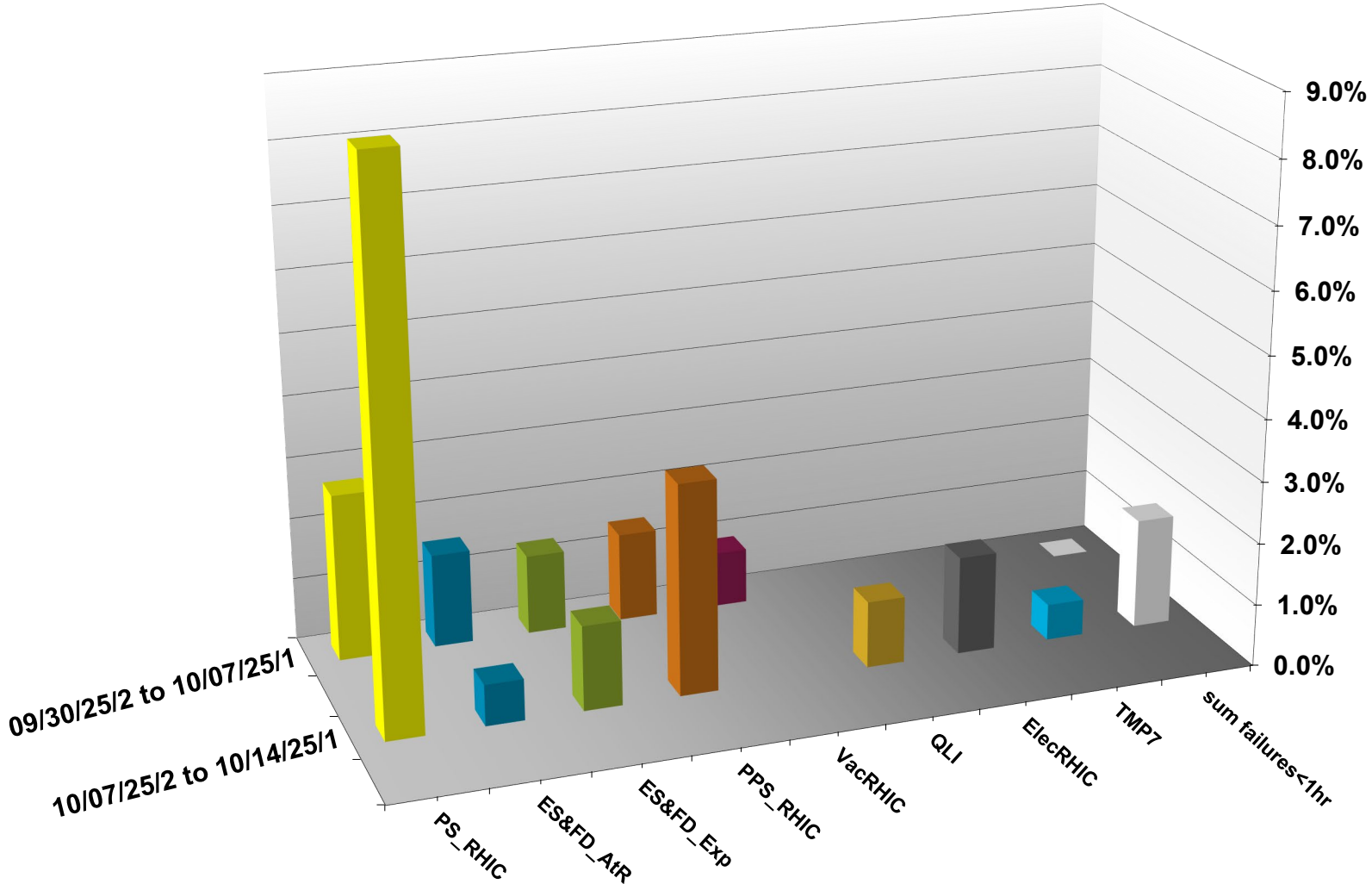


C-AD ACTIVITY October 2025



INTEGRATED **FAILURES** (GREATER THAN ONE HOUR) **BY SYSTEM -- October 2025**



NSRL activity past week: 10/7-14/2025 (as of 0800)

NSRL running continues.

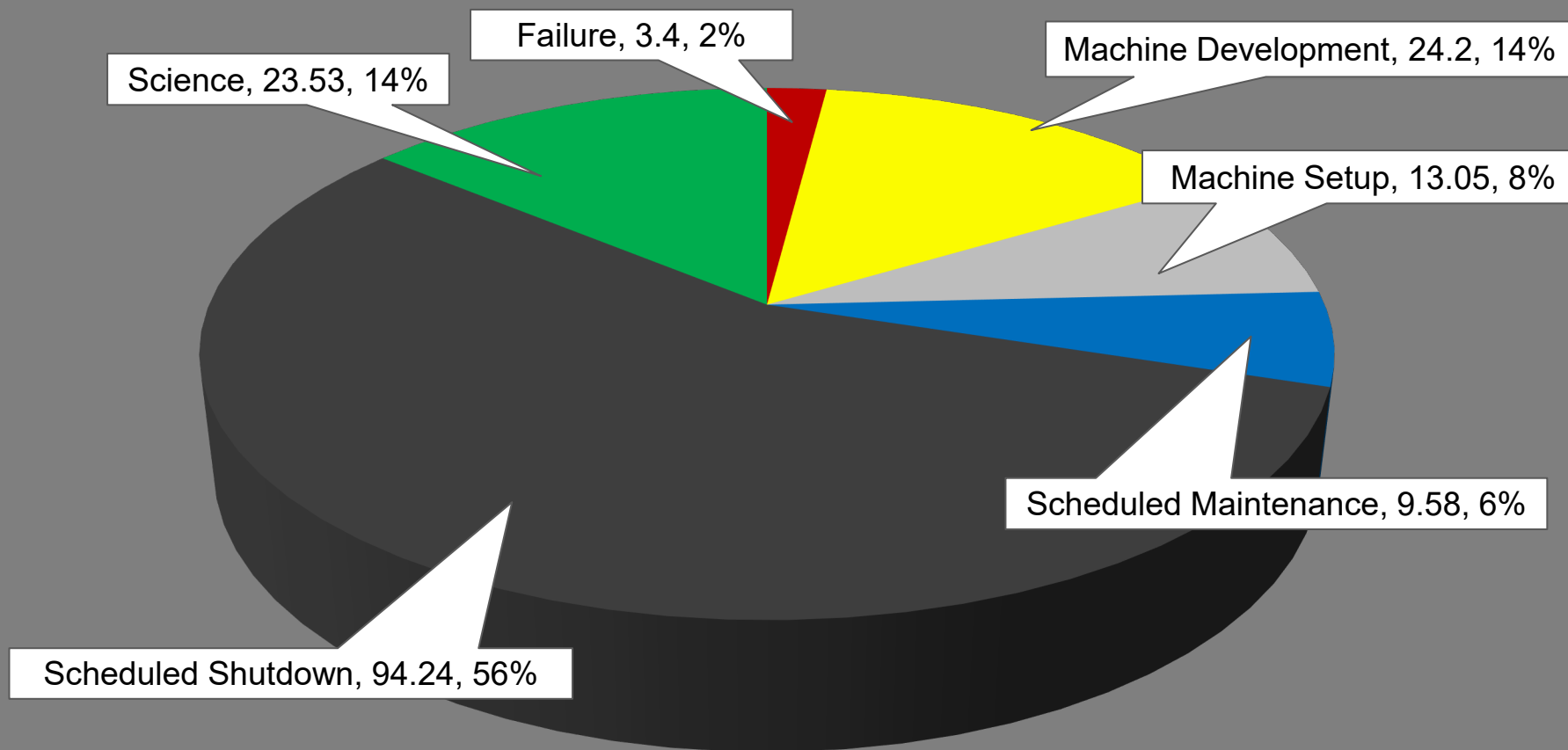
Various setup, NASA biology and user beam time through the week.

7 EBIS species (H, He, C, O, Si, Ti, Fe) logged to NSRL.

Run 25-C began 30 June; concludes 31 October.

Run 26-A **schedule posted** with users up to 19 December.

NSRL Hours



Notes from Operations

Notable failures (>1 hr)

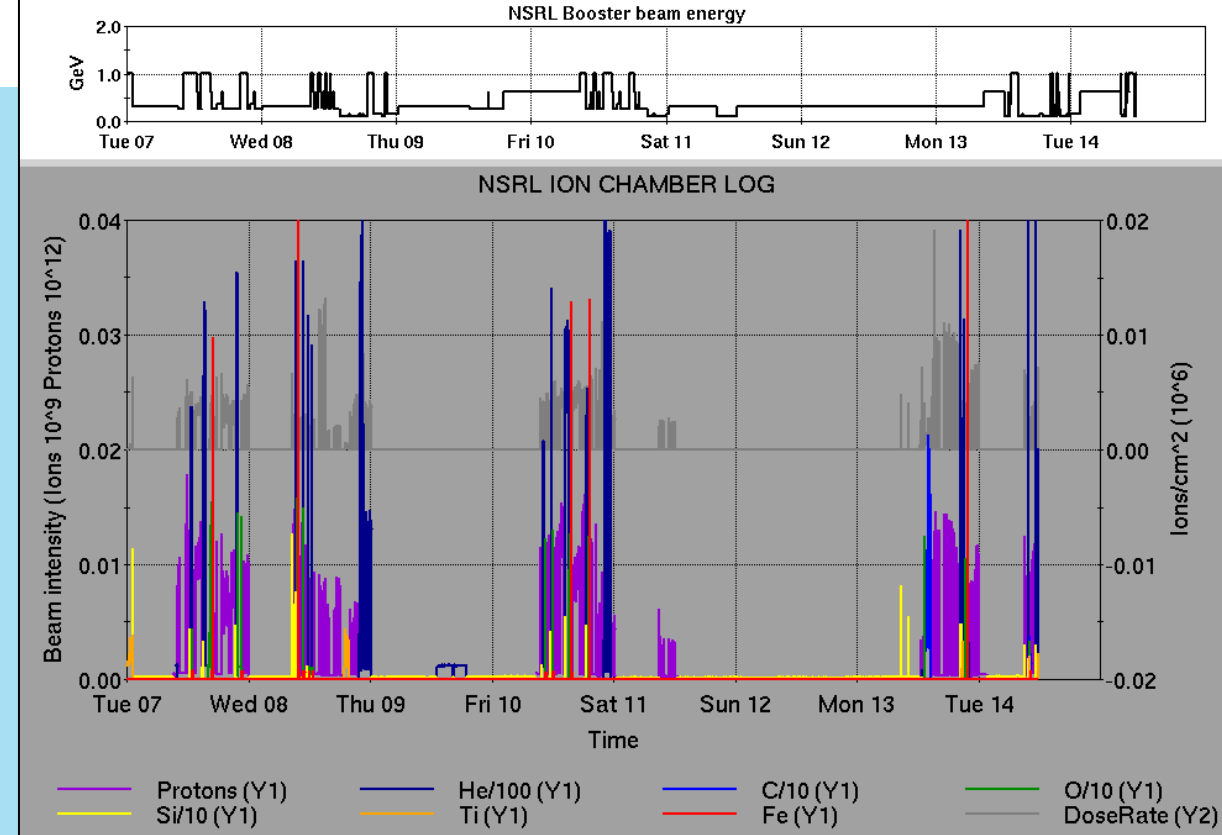
- Yellow QLI, y4-q89 crowbar fault
- Blue abort kicker PS module 1 misaligned (2x)
 - access to test thyatron, tighten loose connections
 - adjust thyatron reservoir voltages
- Yellow injection kicker PS module 1 misalignment; voltage adjustments
- Yellow QLI abort, y6-q6-ps regulator card replaced (2x); time constant board replaced (1x)
 - Additional rack failure in 1004B during recovery, electricians replaced fuse in disconnect switch
 - Additional Blue QLI during hysteresis
- Controls AGS event link failure, affecting various PS; fanout chassis repaired (2x)
- sPHENIX access for TPC issues
- AtR uq2-ps regulation issue (2x)
- Blue NQBPS abort, bi9-qd2-ps noise suspected
- Blue BLM abort, bi5-tq4-ps trip
 - Controls FEC failure, cfe-7a-ps2 & network switch prevent reset/ramping
- QLI both rings, DX heaters fired due to Blue main dipole regulation issues; DCCT replaced

Other notes

- STAR accesses, magnet trips, pedestal runs
- Beam abort, human error while resetting BS4 RF
- sPHENIX system cooling trips, Pump Room PLC issues
- Blue Permit failure, 9a-BPM lost; reset network switch
- Power dip, NQBPS beam abort
- Tandem charging system repairs, delayed dump
- Other various trips, resets, tuning, foil changes



Over 47 hours CeC beam time, halted by SRF gun issues; other injector setup, training behind stores



AlarmDisplay - All Alarm View - Suppression Enabled@acnlinje.pbn.bnl.gov

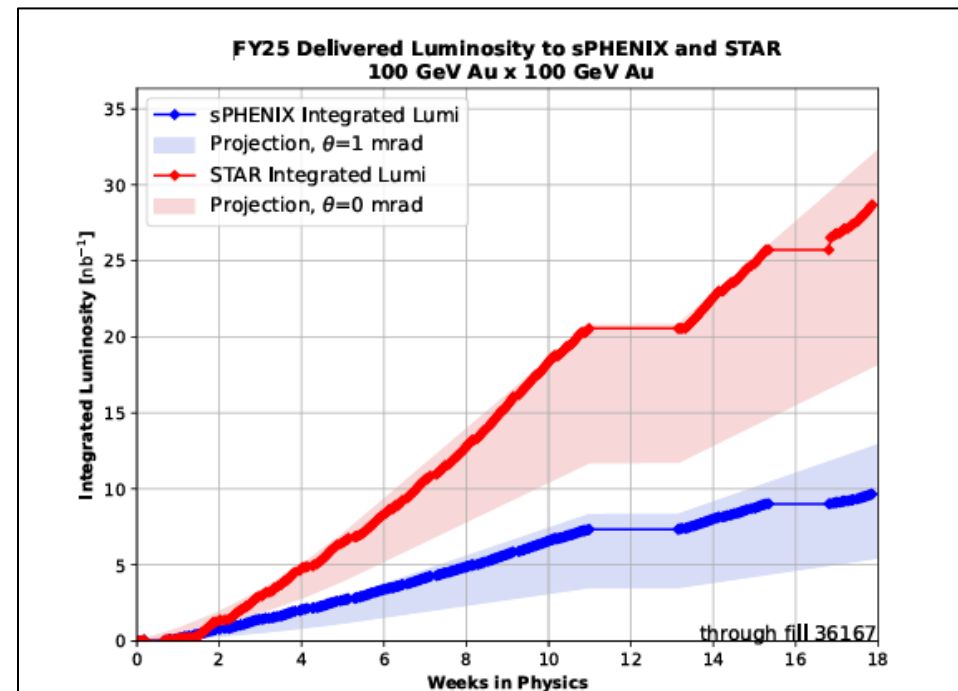
Setup	Filter	Linac	Tandem	EBIS	Booster	AGS	ATR	RHIC	ERL	Other	Total
Total		2 (43)	1 (39)	5 (6)	7 (23)	232 (14)	17 (0)	396 (10)	0 (0)	24 (10)	684 (145)
RF		0 (19)	0 (0)	0 (0)	1 (1)	1 (0)	0 (0)	0 (3)	0 (0)	6 (6)	8 (29)
PS		0 (10)	0 (17)	5 (4)	3 (10)	203 (7)	7 (0)	13 (0)	0 (0)	1 (2)	232 (50)
Vacuum		0 (2)	1 (22)	0 (2)	2 (7)	24 (0)	2 (0)	3 (4)	0 (0)	11 (0)	43 (37)
Inst		0 (0)	0 (0)	0 (0)	0 (1)	0 (2)	7 (0)	2 (3)	0 (0)	2 (1)	11 (7)
Other		2 (12)	0 (0)	0 (0)	1 (4)	4 (5)	1 (0)	378 (0)	0 (0)	4 (1)	390 (22)

Tue Oct 14 11:34:53 EDT 2025

Reminder from Operations

- MCR beam operations continue

- RHIC physics continues
 - Tandem (MP7) remains sole provider of Au31 for RHIC
- NSRL shifts scheduled for users, MD, and NASA biology, 5 days/1-2 shifts this week and next.
 - Au31 from Tandem for higher intensity
 - Other ion beams from EBIS; H₂ intended for H delivery
- No BLIP runs on calendar yet
 - Linac proton beams off until November.
 - ORC completed.
- AGS tuning, other studies to continue behind stores as time allows
 - AGS/AtR 3.85 GeV Au setup TBD
- MCR shift coverage 24/7.



Availability: RHIC Run-25

