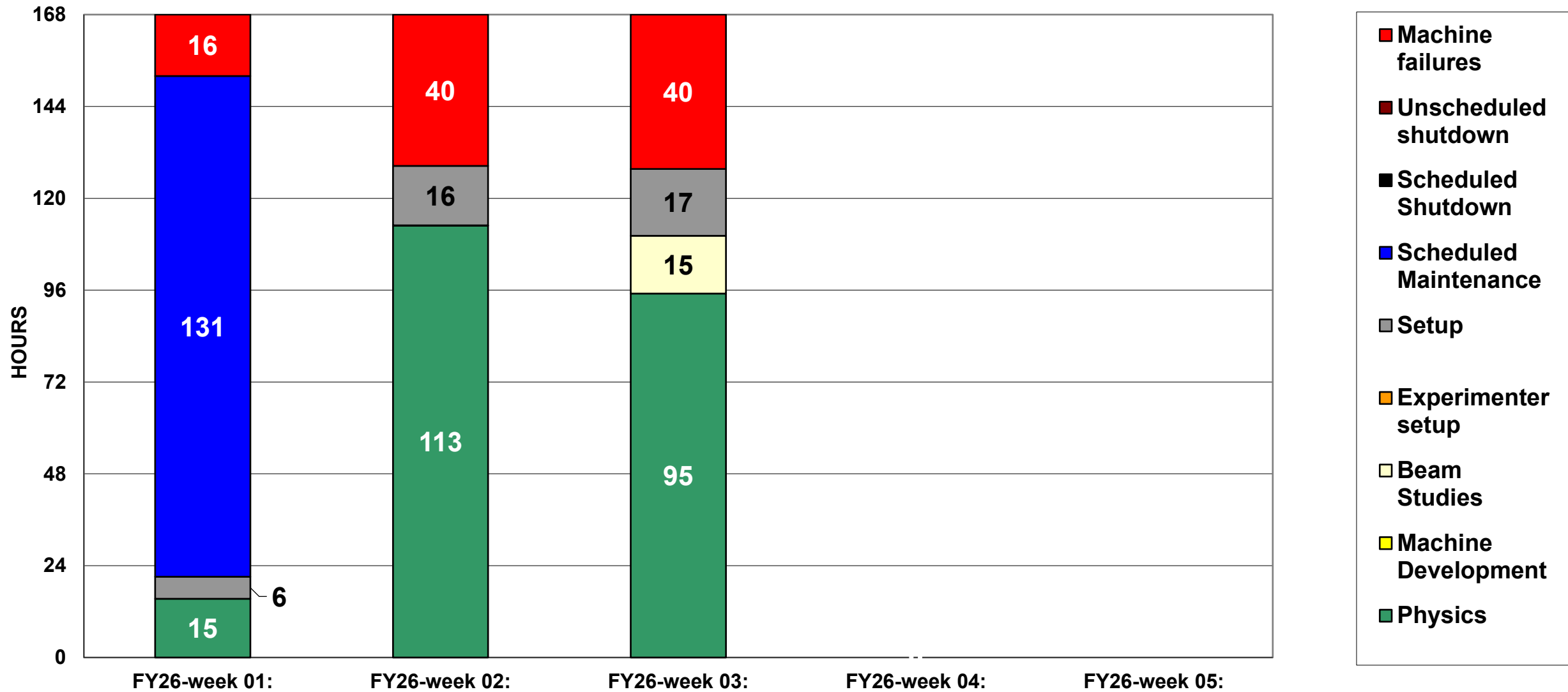
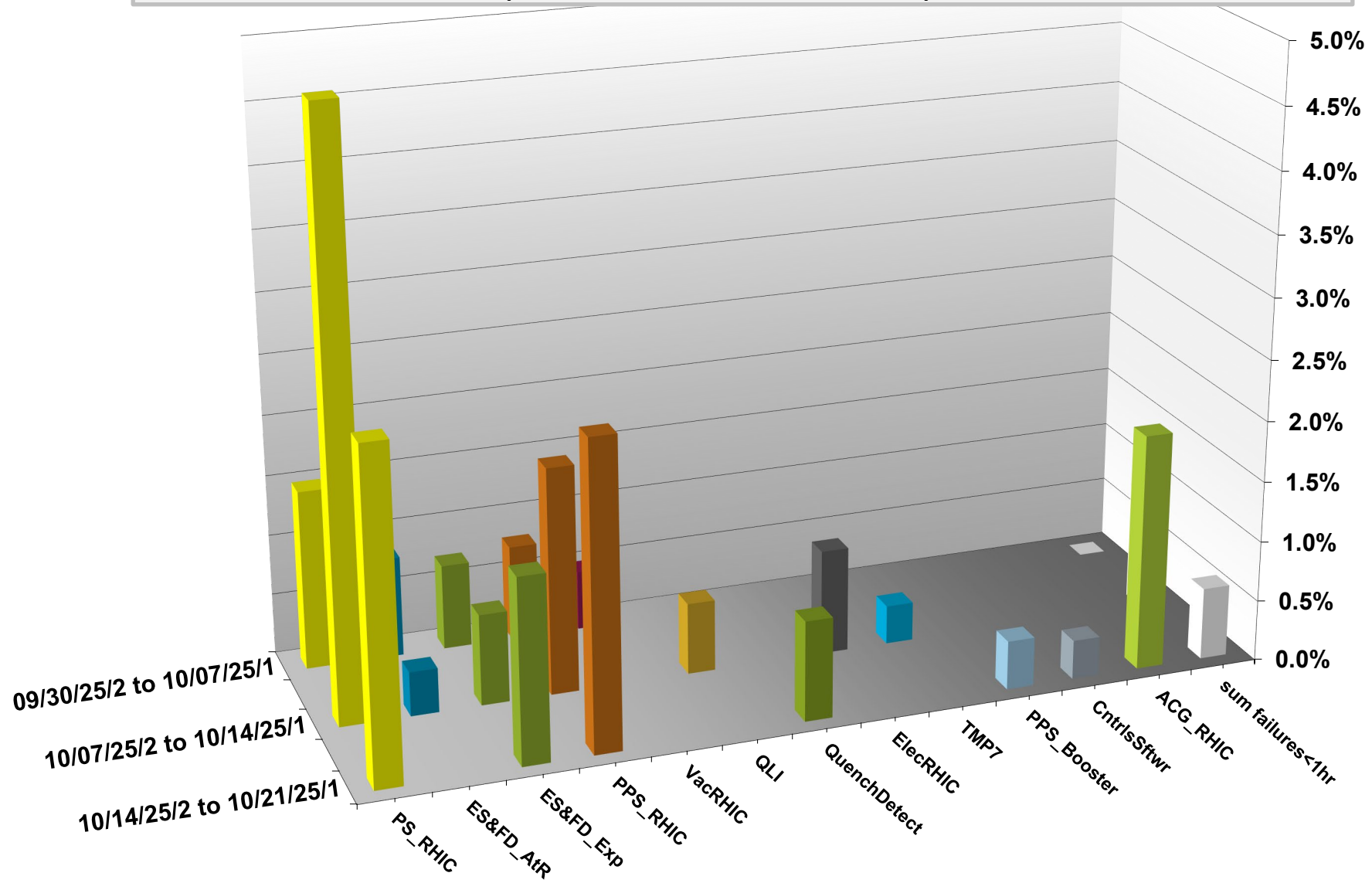


C-AD ACTIVITY October 2025



INTEGRATED **FAILURES** (GREATER THAN ONE HOUR) **BY SYSTEM -- October 2025**



NSRL activity past week: 10/14-21/2025 (as of 0800)

NSRL running continues.

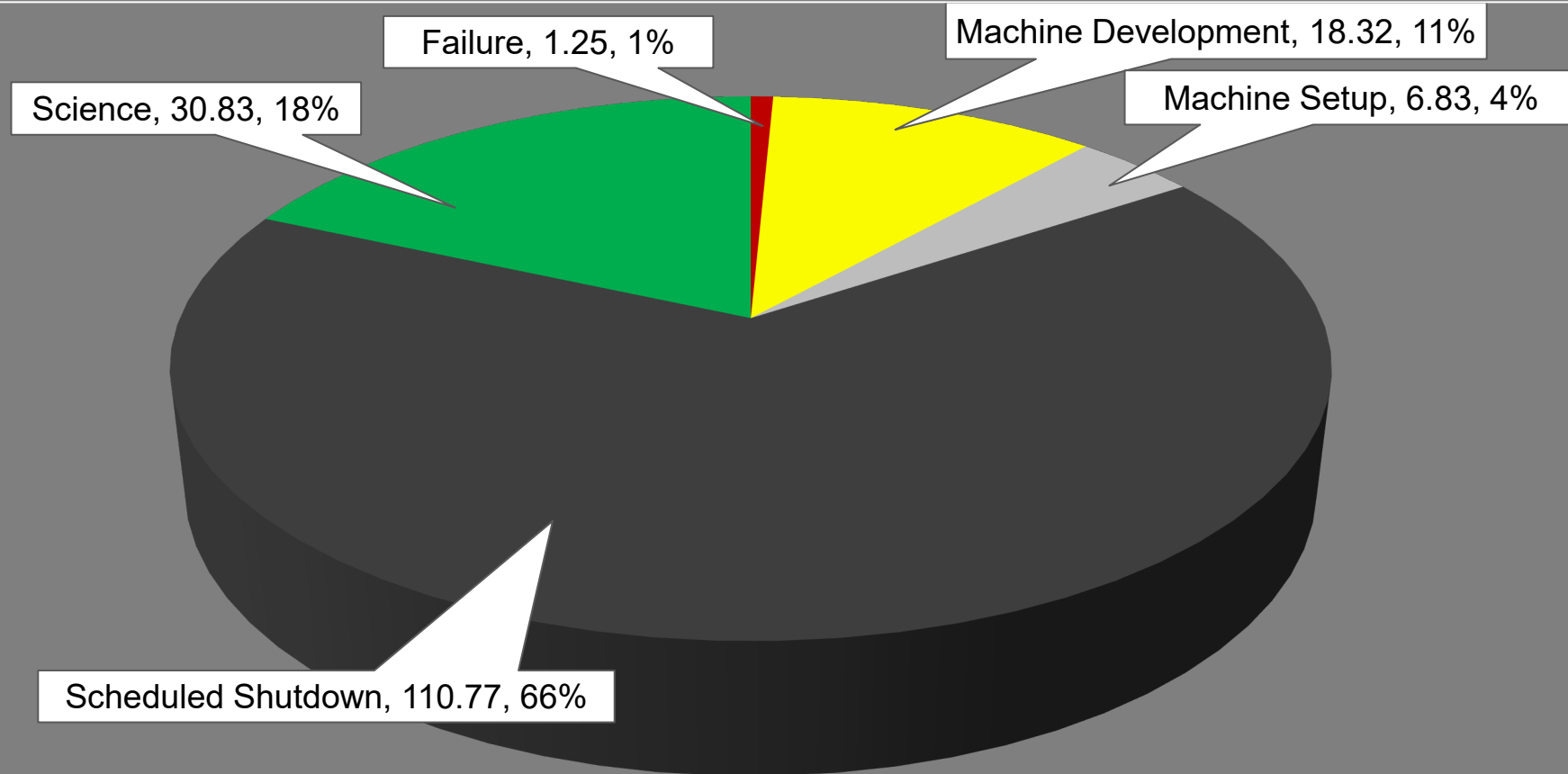
Various setup, NASA biology and user beam time through the week.

13 EBIS species, Tandem Au logged to NSRL.

Run 25-C began 30 June; concludes 31 October.

Run 26-A **schedule posted** with users up to 19 December.

NSRL Hours



Availability: 97.8%

Notes from Operations

Notable failures (>1 hr)

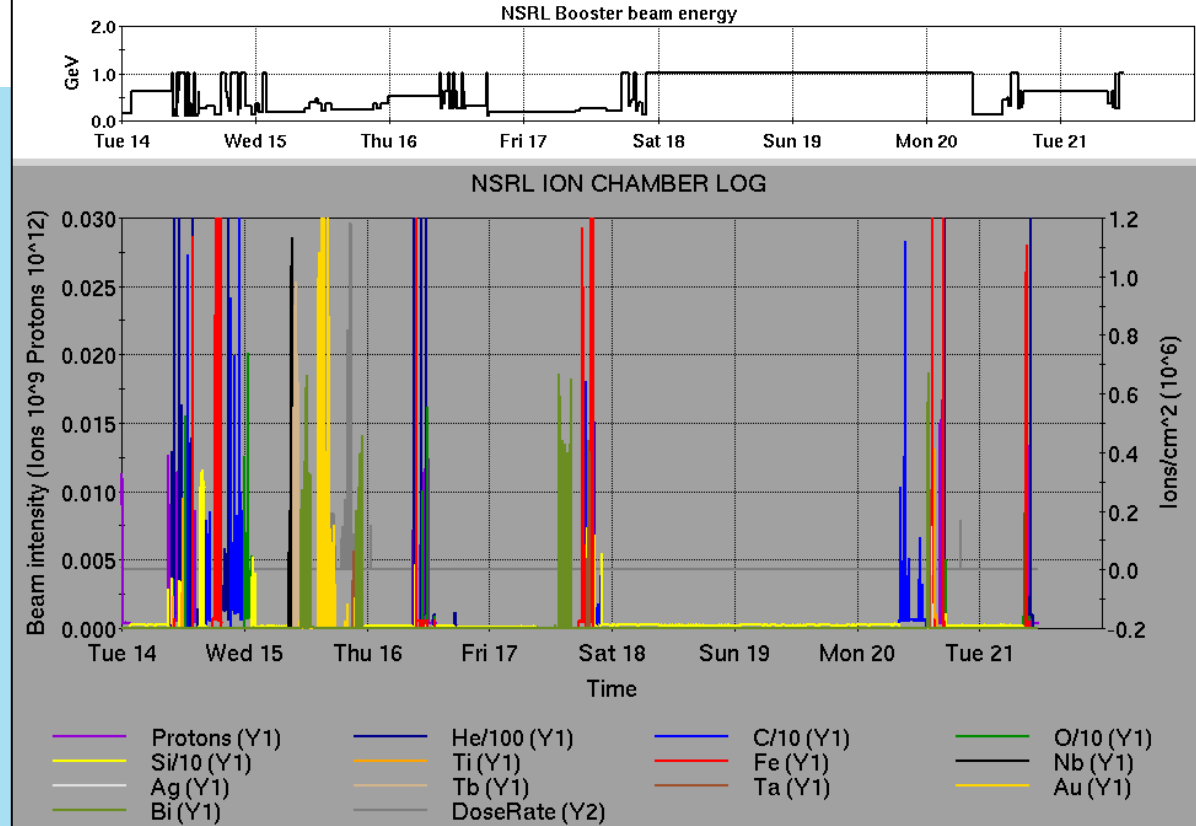
- STAR, CeC access during sPHENIX magnet ramp
- Blue QLI/beam abort, quench protection switch & b6-q3 issues
- Blue QLI/beam abort, flattop quad PS power module master interlock relay failure, replaced
- sPHENIX access for HVPS work on TPC
- ACS failure sector 10 UPS, HW failure. Bypassed UPS, reswept
- yi11-th21 PS failure, replaced in 11B alcove
- Booster C7 injection kicker failure; regulator card, 15V PS replaced
- Yellow abort kicker PS failure; f/o transmitter replaced
- ACS failure, 2 sweeps lost. Investigation inconclusive.
- Beam abort, RF permit failure during BS4 reset. Access to repair tuner.
- CeC access concurrent to other failures
- Yellow abort kicker PS failure; bias voltage fault bypassed.

Other notes

- Various additional STAR/sPHENIX access for detector system issues
- AGS access behind store for water leak repairs
- sPHENIX magnet trip during store, reset/resteered beam
- BPM beam abort, resets required in 9A systems
- Tandem MP7 source change, behind store
- Other various trips, resets, tuning, foil changes (23 resets logged, in addition to short failures)



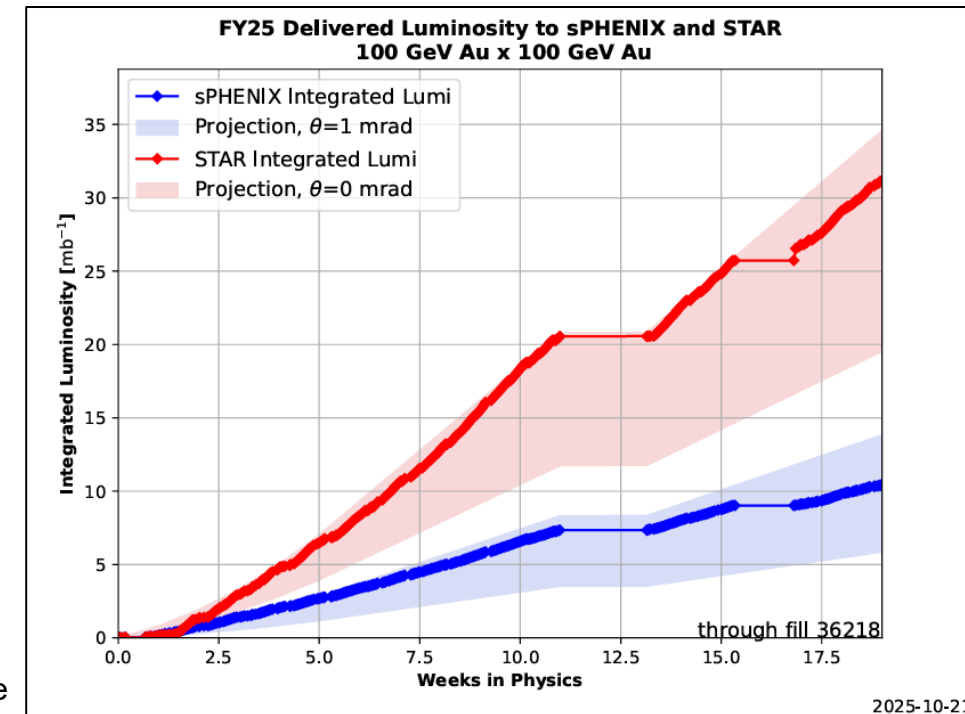
No CeC beam time logged this week;
other injector setup, training behind stores



	Linac	Tandem	EBIS	Booster	AGS	ATR	RHIC	ERL	Other	Total
Total	14 (35)	0 (61)	0 (6)	3 (23)	5 (16)	19 (0)	397 (10)	0 (0)	26 (10)	464 (161)
RF	13 (13)	0 (0)	0 (0)	1 (1)	1 (0)	0 (0)	1 (3)	0 (0)	6 (6)	22 (23)
PS	0 (10)	0 (39)	0 (4)	1 (10)	3 (9)	8 (0)	9 (0)	0 (0)	1 (2)	22 (74)
Vacuum	0 (1)	0 (22)	0 (2)	0 (7)	0 (0)	0 (0)	10 (4)	0 (0)	12 (0)	22 (36)
Inst	0 (0)	0 (0)	0 (0)	0 (1)	0 (2)	9 (0)	4 (3)	0 (0)	2 (1)	15 (7)
Other	1 (11)	0 (0)	0 (0)	1 (4)	1 (5)	2 (0)	373 (0)	0 (0)	5 (1)	383 (21)

Reminder from Operations

- MCR beam operations continue
 - RHIC physics continues
 - Tandem (MP7) remains sole provider of Au31 for RHIC
 - NSRL shifts scheduled for users, MD, and NASA biology, 5 days/1-2 shifts this week and next.
 - Au31 from Tandem for higher intensity
 - Other ion beams from EBIS; H₂ intended for H delivery
 - No BLIP runs on calendar yet. ORC TBD.
 - Linac proton beams off until November.
 - Linac ORC completed; restart underway.
 - AGS tuning, other studies to continue behind stores as time allows
 - MCR shift coverage 24/7.



Availability: RHIC Run-25

