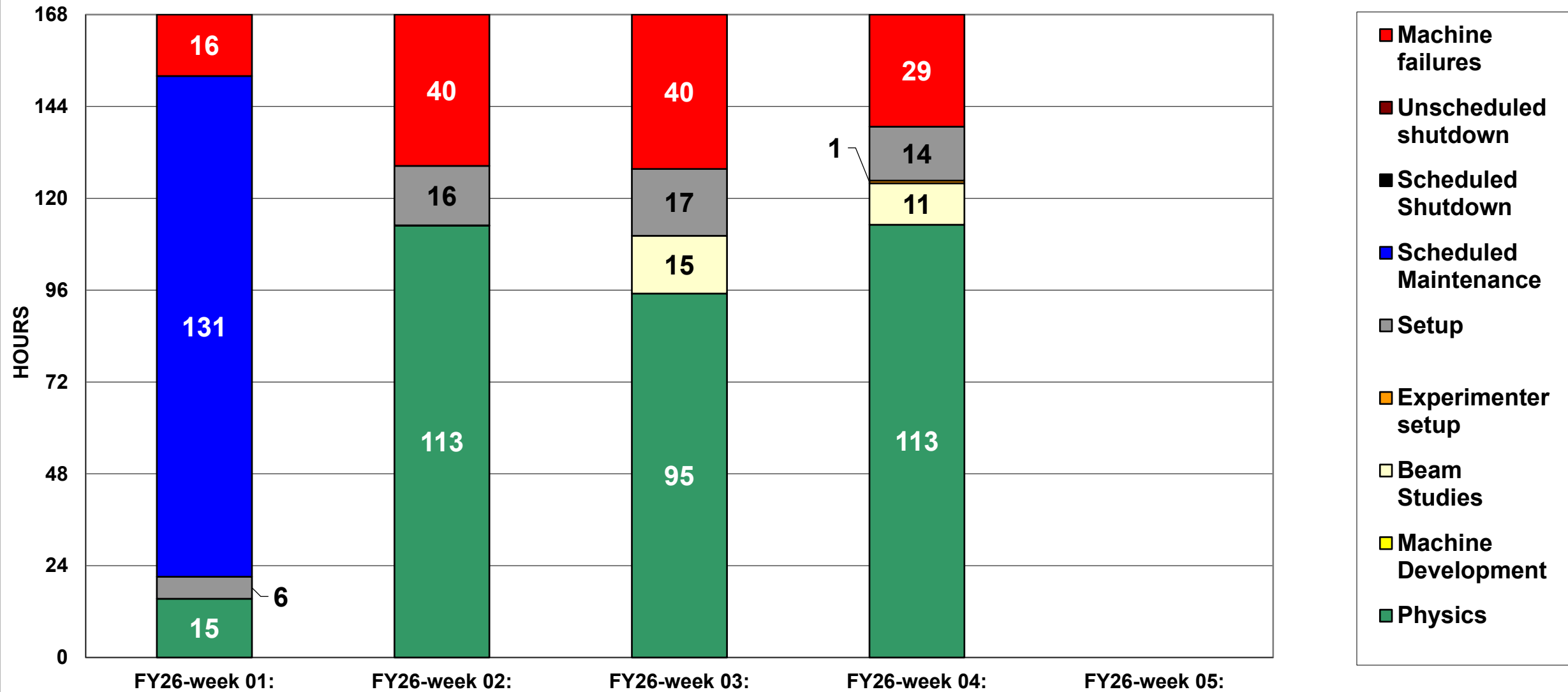
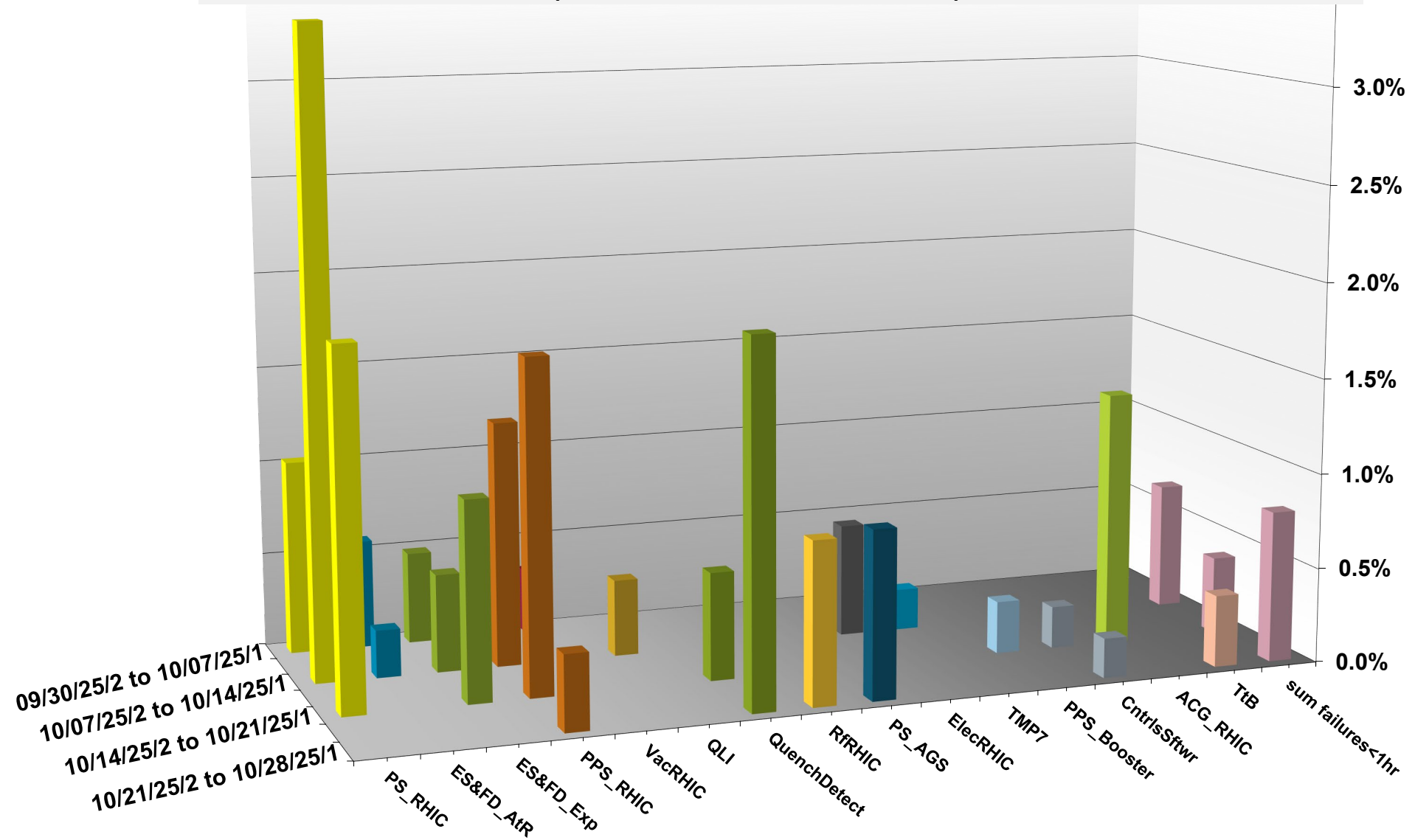


C-AD ACTIVITY October 2025



INTEGRATED **FAILURES** (GREATER THAN ONE HOUR) **BY SYSTEM -- October 2025** 3.5%



NSRL activity past week: 10/21-28/2025 (as of 0800)

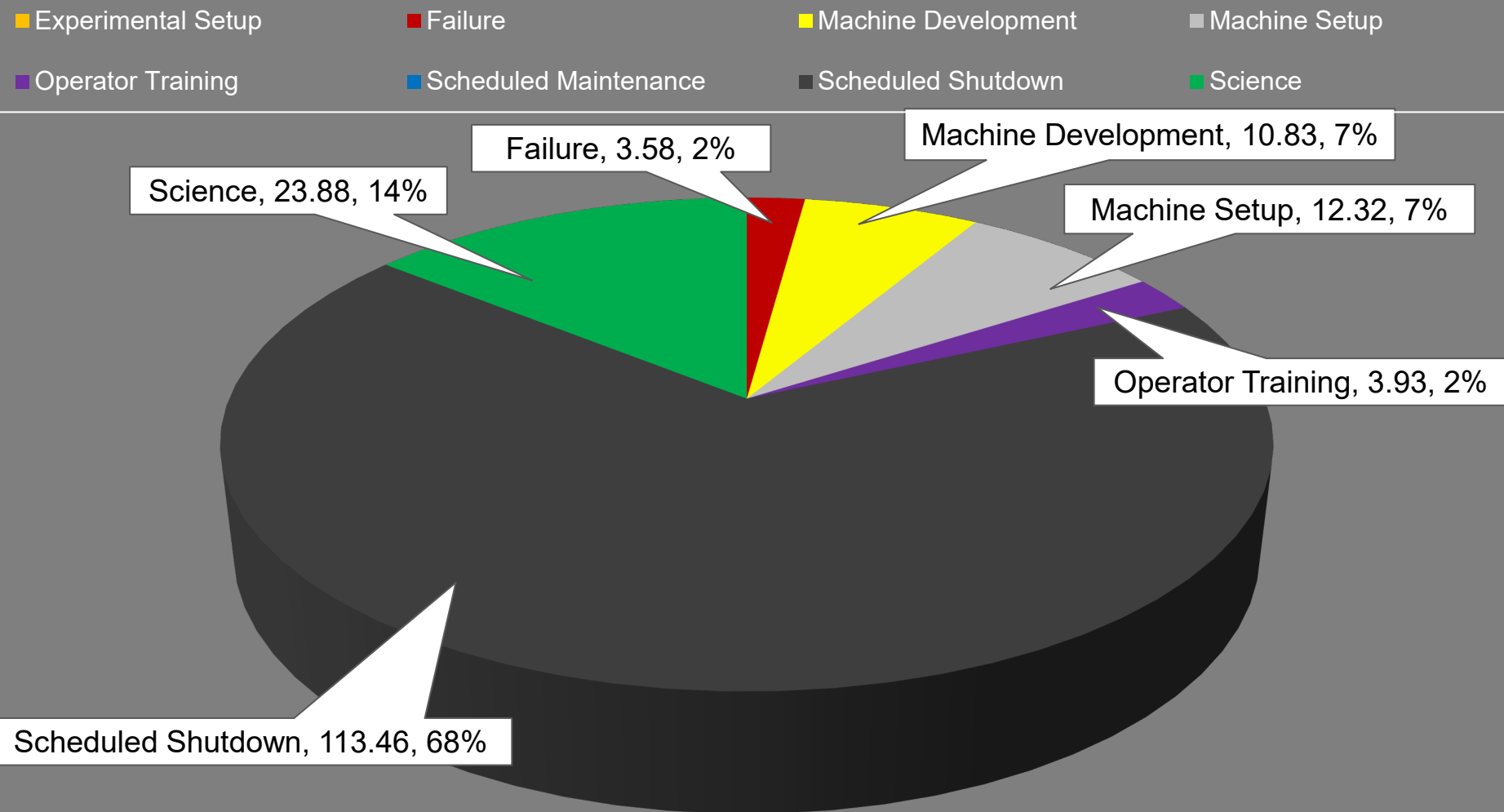
NSRL running continues.

Various setup, NASA biology and user beam time through the week.

11 EBIS species logged to NSRL.

Run 25-C began 30 June;
concludes 31 October.
Run 26-A **schedule posted**
with users up to 19
December.

NSRL Hours



Availability: 93.4%

Notes from Operations

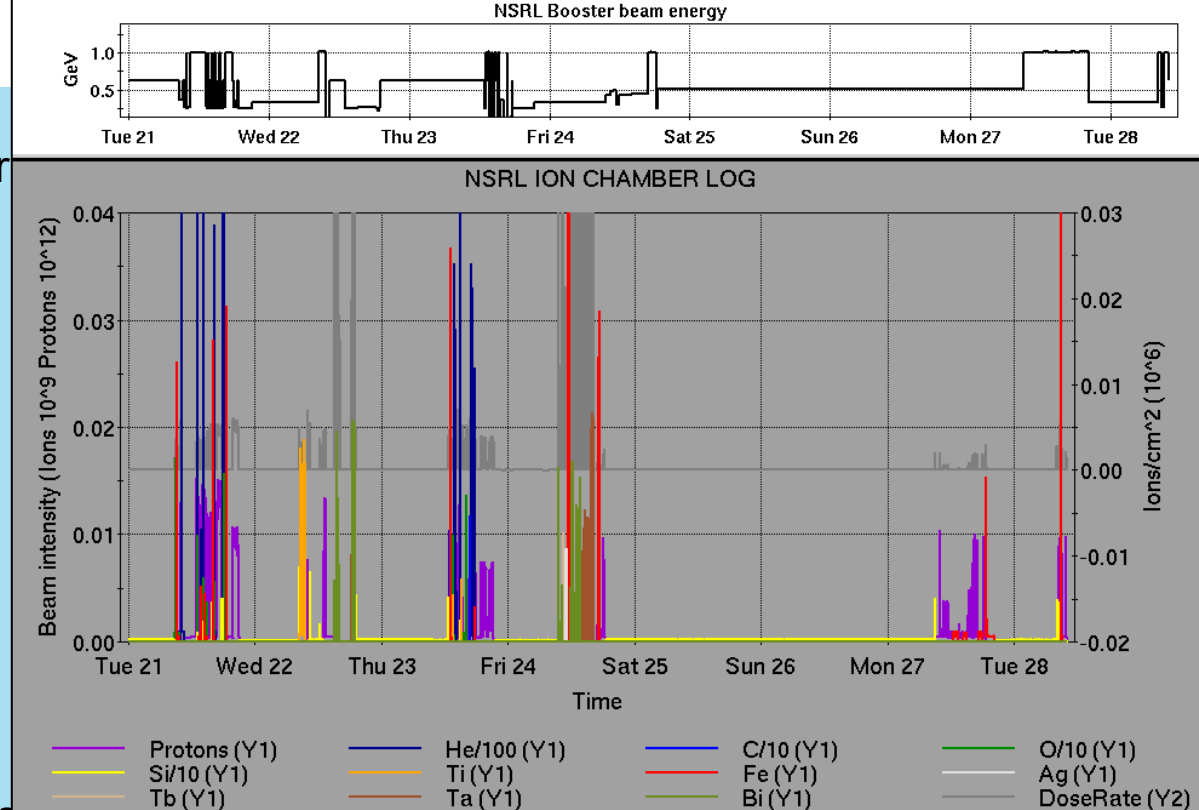
Notable failures (>1 hr)

- AGS MMPS relay failure, replacement required halting motor
- Access for Yellow abort kicker fiber optic cable; delays restoring operation, scope logging
- Blue abort kicker timing monitor software errors
- YA2 multiple trips, access for tuner servo repair
- Tandem TtB section 27 trim dipoles overvoltage failure (2x); DAC card replaced, breakers & valves reset
- 7b-qd1 quench detector card failure voltage tap signal drift, access for (unsuccessful) swap
- EBIS short trap turbo pump mechanical failure, replaced.

Other notes

- BPM beam abort, 9A network switch reset
- Blue BS1 (2x), BS3 RF crowbar fault (1x), reset; BS3 required grid supply replacement
- NQBPS abort; sextupole trip and possible line voltage fluctuations
- STAR low level gas alarm, beam dumped for access
- BLM abort at transition
- STAR magnet system communications failure
- 7C network switch failure, reset
- H10 septum PS water flow trips
- sPHENIX access for water leak check
- **Controlled Access key left the BNL site**
- Other various trips, resets, tuning, foil changes (28 resets logged, in addition to short failures)

Over 41 hours CeC time logged this week, prior to halt for SRF gun; other injector setup, training behind stores

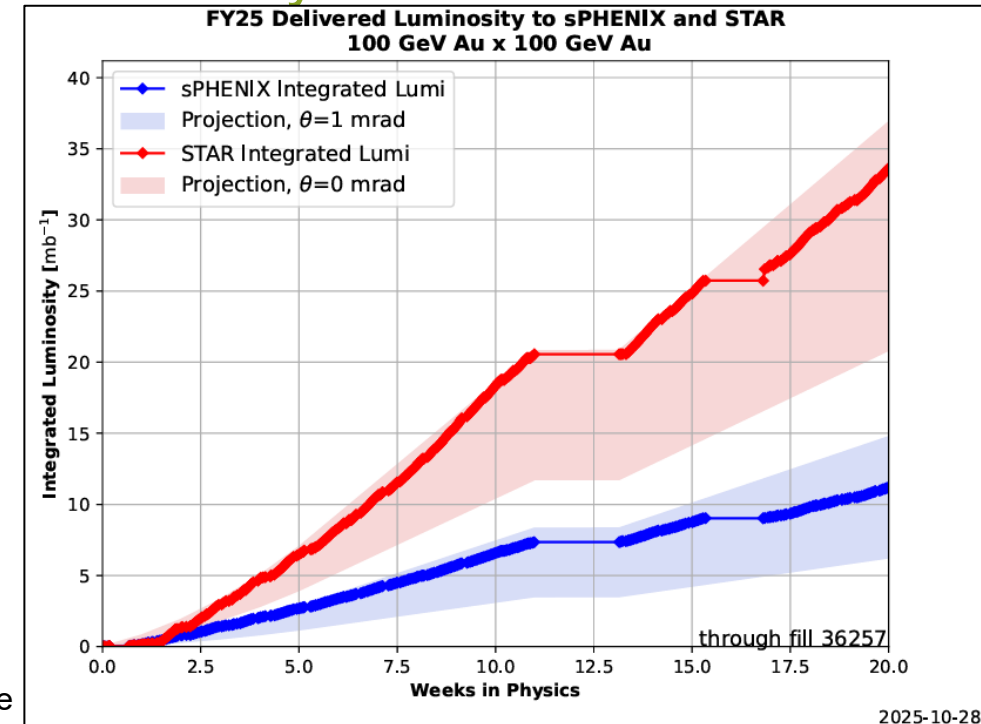


	Linac	Tandem	EBIS	Booster	AGS	ATR	RHIC	ERL	Other	Total
Total	24 (22)	1 (29)	2 (6)	3 (23)	6 (16)	8 (0)	390 (13)	0 (0)	19 (10)	453 (119)
RF	23 (0)	0 (0)	0 (0)	1 (1)	1 (0)	0 (0)	0 (3)	0 (0)	9 (6)	34 (10)
PS	0 (10)	0 (7)	0 (4)	1 (10)	2 (9)	2 (0)	4 (0)	0 (0)	1 (2)	10 (42)
Vacuum	0 (1)	1 (22)	0 (2)	0 (7)	0 (0)	0 (0)	8 (7)	0 (0)	2 (0)	11 (39)
Inst	0 (0)	0 (0)	0 (0)	0 (1)	1 (2)	6 (0)	2 (3)	0 (0)	2 (1)	11 (7)
Other	1 (11)	0 (0)	2 (0)	1 (4)	2 (5)	0 (0)	376 (0)	0 (0)	5 (1)	387 (21)



Reminder from Operations

- MCR beam operations continue
 - RHIC physics continues
 - Tandem (MP7) remains sole provider of Au31 for RHIC
 - NSRL shifts scheduled for users, MD, and NASA biology, 5-6 days/1-2 shifts this week and next.
 - Au31 from Tandem for higher intensity
 - Other ion beams from EBIS; H_2 intended for H delivery
 - No BLIP runs on calendar yet. ORC TBD.
 - Linac OPPIS beam to HEBT, Booster expected next week.
 - AGS tuning, other studies to continue behind stores as time allows
 - MCR shift coverage 24/7.



Availability: RHIC Run-25

