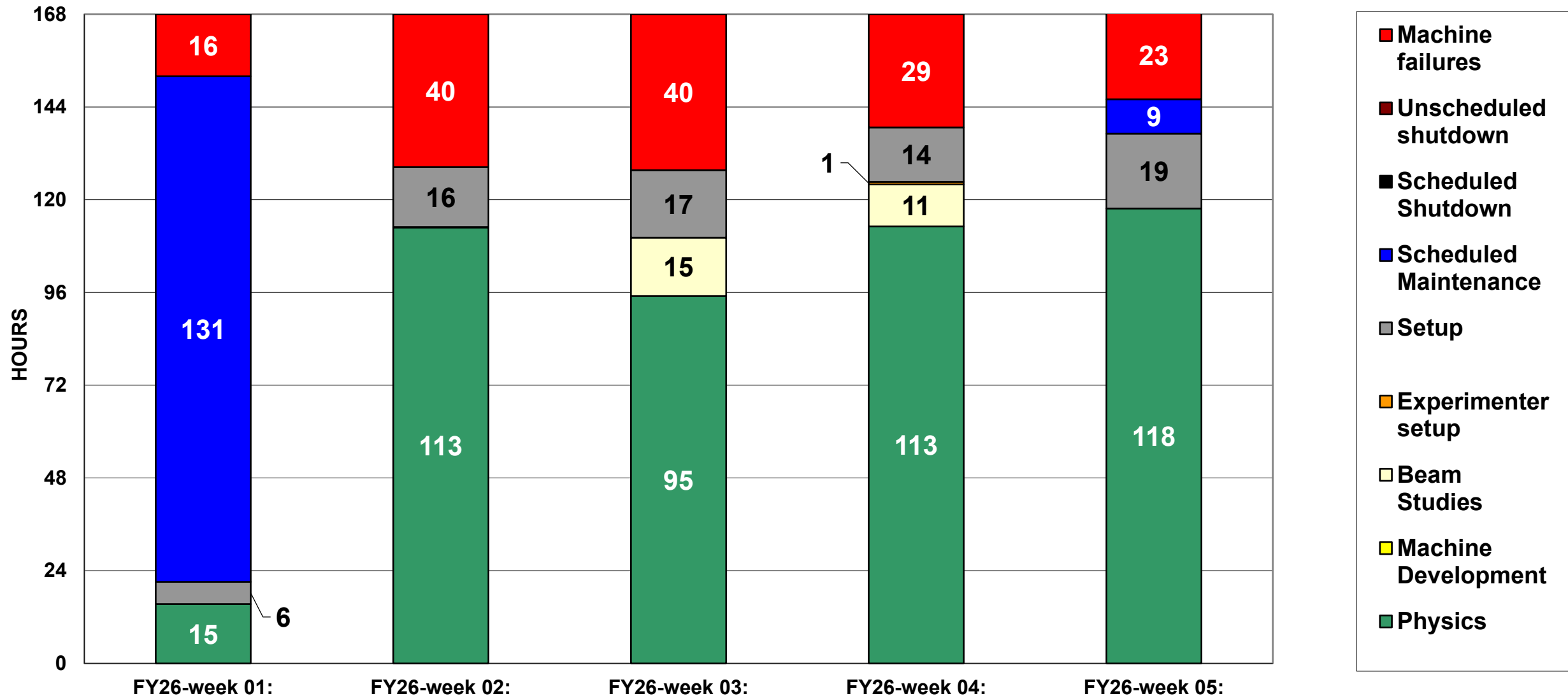
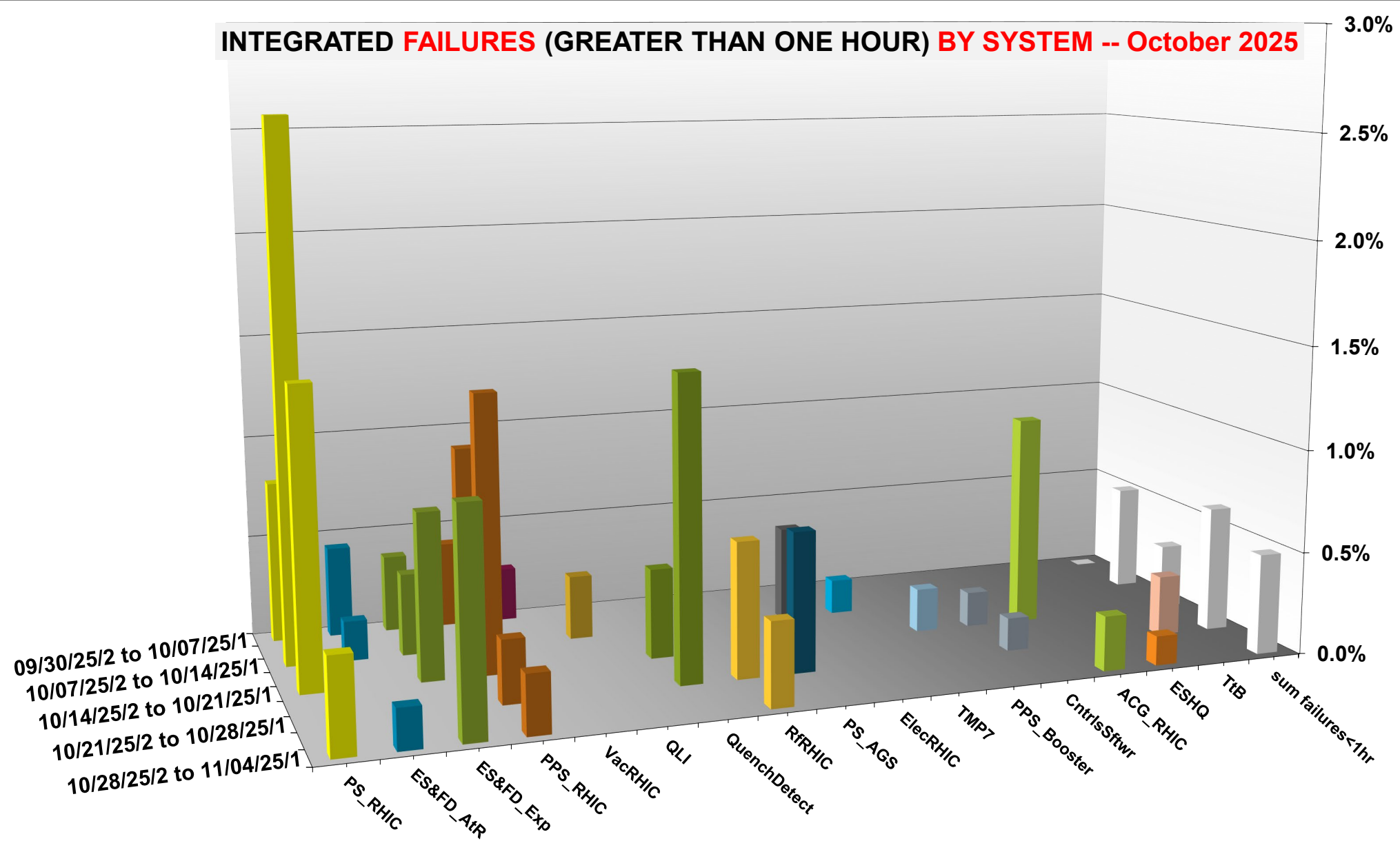


C-AD ACTIVITY October 2025



INTEGRATED **FAILURES** (GREATER THAN ONE HOUR) **BY SYSTEM -- October 2025**



NSRL activity past week: 10/28-11/4/2025 (as of 0800)

NSRL running continues.

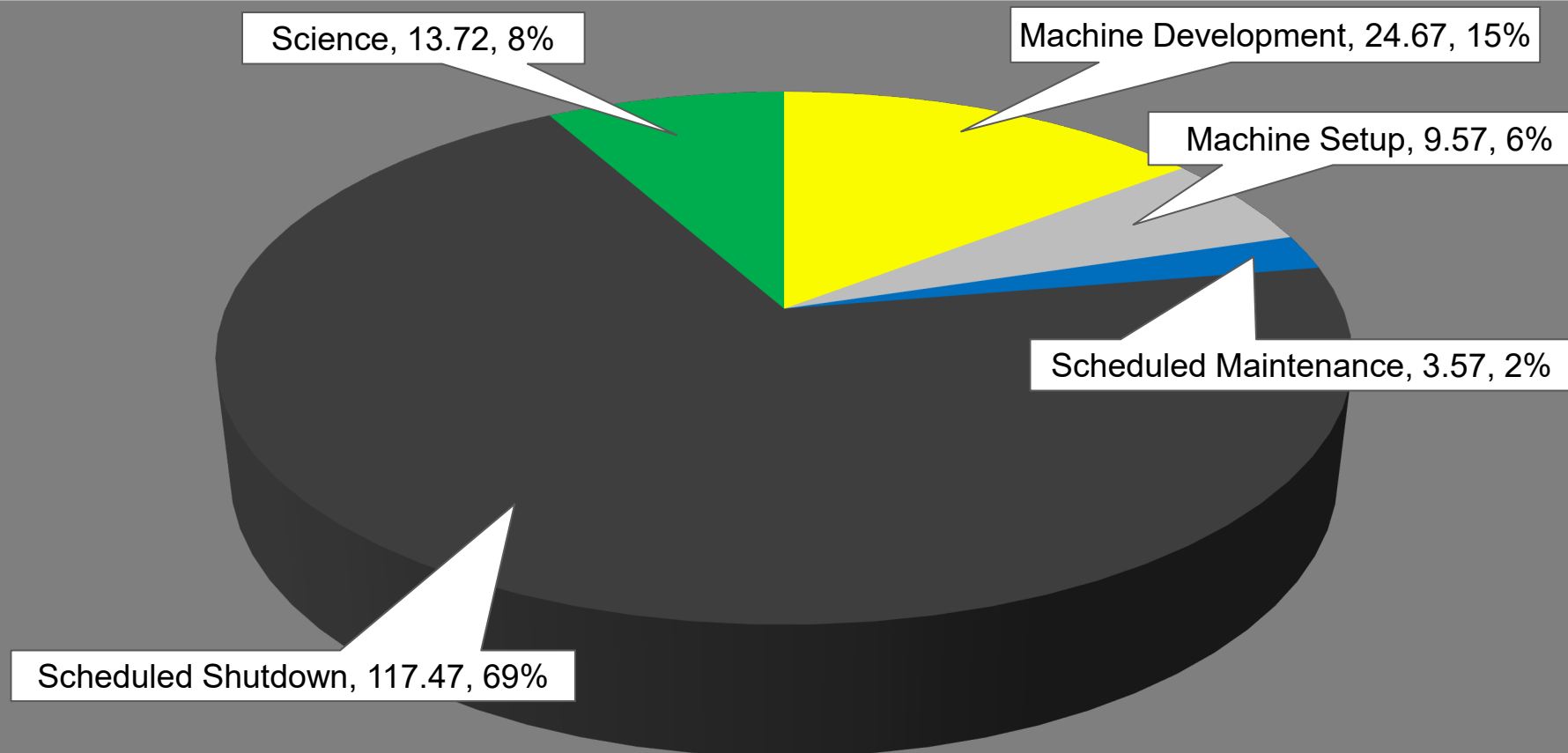
Various setup, NASA biology and user beam time through the week.

6 EBIS species logged (and one unknown) to NSRL

Run 25-C began 30 June; concluded 31 October.
Run 26-A **schedule posted** with users up to 19 December.

NSRL Hours

Experimental Setup	Failure	Machine Development	Machine Setup
Operator Training	Scheduled Maintenance	Scheduled Shutdown	Science



Availability: 100.0%

Notes from Operations

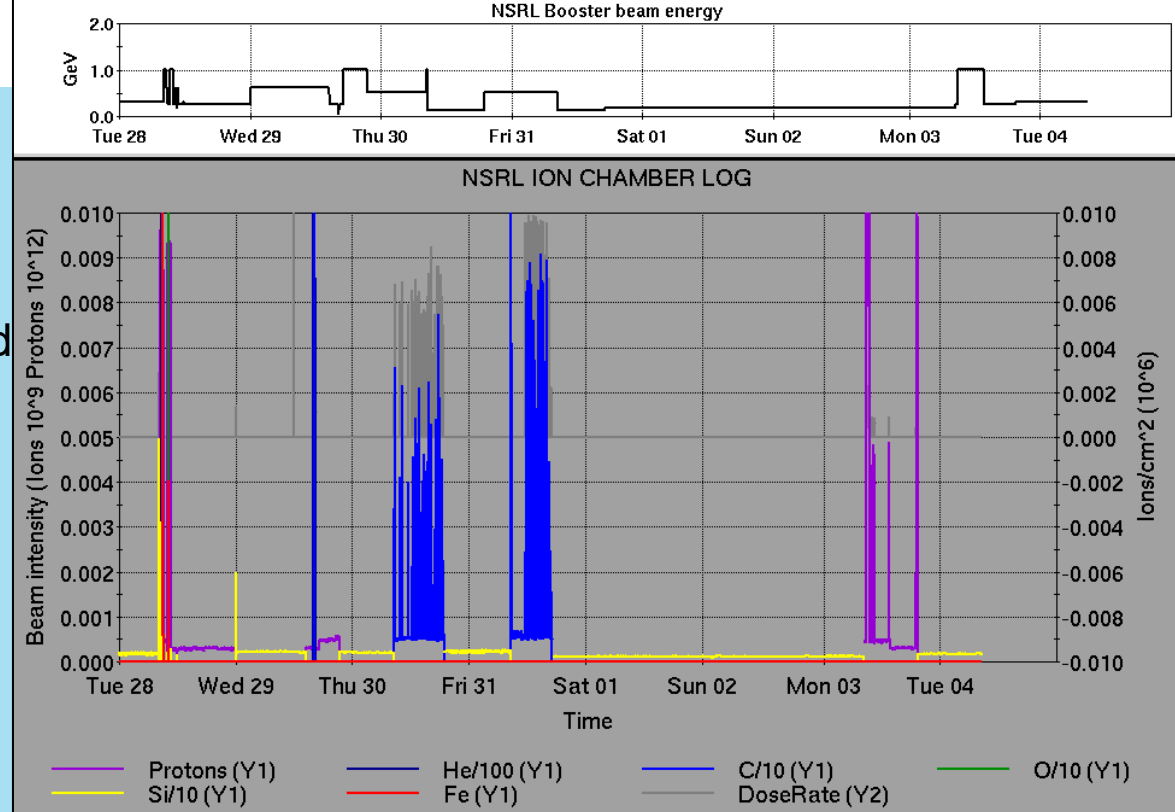
Notable failures (>1 hr)

- sPHENIX access for detector power failure; PLC repaired
- Blue QLI on hysteresis ramp, post-maintenance
- Yellow abort kicker PS failure, prime fault indication bypassed
- Power dip/NQBPS beam abort (3x); b12-q89-ps input masked
- ODH sensor failure sector 10, Bldg 1010A; F/R access and ACG repair
- xp1-ps failure, flow switch adjusted
- YA1 RF cavity failure, low level drive cable work
- BA1 RF cavity failure, ferrite tuner loop setting adjusted
- Emergency response to 1006; fire alarm from turbo pump venting oil
- sPHENIX access for MVTX system failures

Other notes

- BPM beam abort, AC reset at store unsuccessful
- BLM beam abort at transition, wfgman initialized after prep
- BLM beam abort at store, bi5-tq4-ps trip
- NQBPS beam abort, undiagnosed
- Beam abort, Cryo lead flow interlock
- Controls failure, access for 9a-ps1 FEC 5V PS issues
- Other various trips, resets, tuning, foil changes (28 resets logged, in addition to short failures)

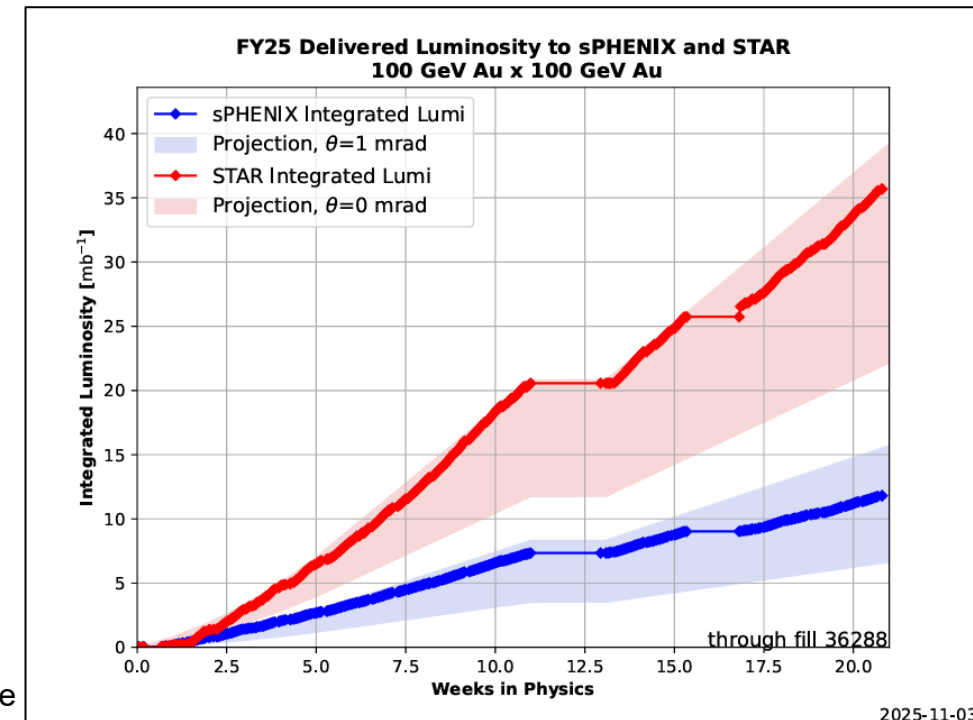
Over 32 hours CeC time logged this week;
other injector setup, training behind stores



	Linac	Tandem	EBIS	Booster	AGS	ATR	RHIC	ERL	Other	Total
Total	25 (20)	9 (29)	0 (6)	4 (23)	5 (14)	8 (0)	385 (16)	0 (0)	14 (9)	450 (117)
RF	24 (0)	0 (0)	0 (0)	1 (1)	1 (0)	0 (0)	0 (3)	0 (0)	7 (6)	33 (10)
PS	0 (9)	8 (7)	0 (4)	1 (10)	2 (7)	2 (0)	1 (0)	0 (0)	1 (2)	15 (39)
Vacuum	0 (0)	1 (22)	0 (2)	0 (7)	0 (0)	0 (0)	3 (13)	0 (0)	0 (0)	4 (44)
Inst	0 (0)	0 (0)	0 (0)	0 (1)	0 (2)	6 (0)	5 (0)	0 (0)	4 (1)	15 (4)
Other	1 (11)	0 (0)	0 (0)	2 (4)	2 (5)	0 (0)	376 (0)	0 (0)	2 (0)	383 (20)

Reminder from Operations

- MCR beam operations continue
 - RHIC physics continues
 - Tandem (MP7) remains sole provider of Au31 for RHIC
 - NSRL shifts scheduled for users & MD, 2 days this week, 5 days next.
 - Au31 from Tandem for higher intensity
 - Other ion beams from EBIS;
 - H₂ intended for H delivery
 - H₃ production at source TBD
 - No BLIP runs on calendar yet. ORC TBD.
 - Linac OPPIS beam to HEBT, Booster expected late this week.
 - AGS tuning, other studies to continue behind stores as time allows
 - MCR shift coverage 24/7.



Availability: RHIC Run-25

