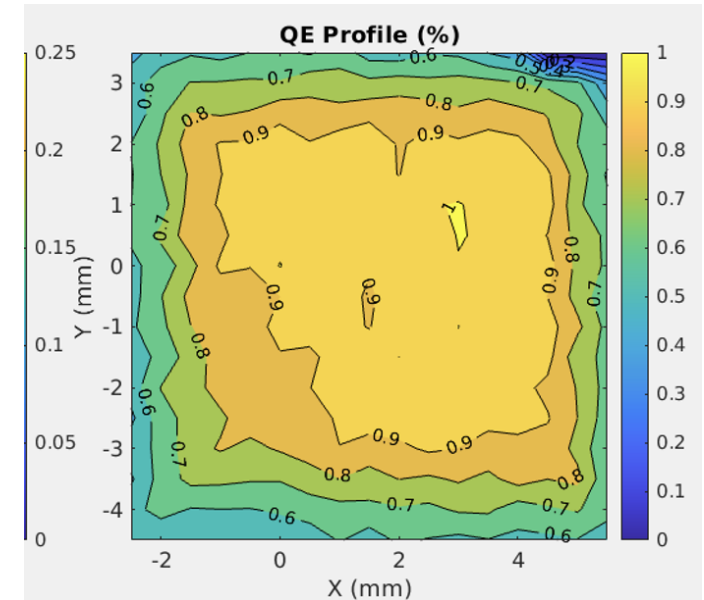
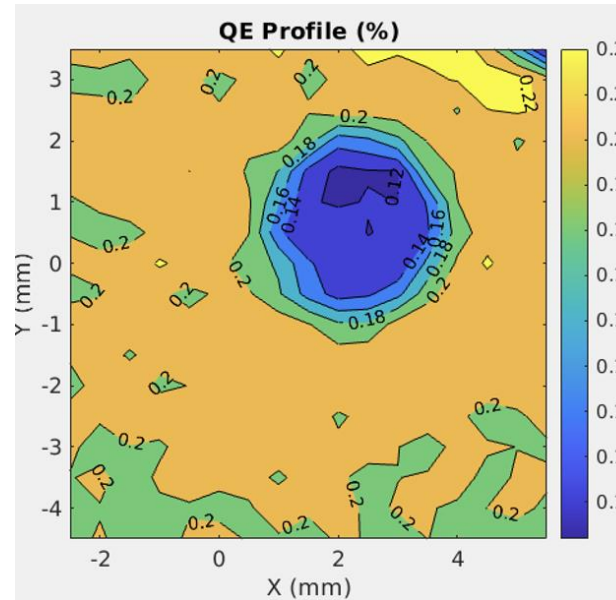
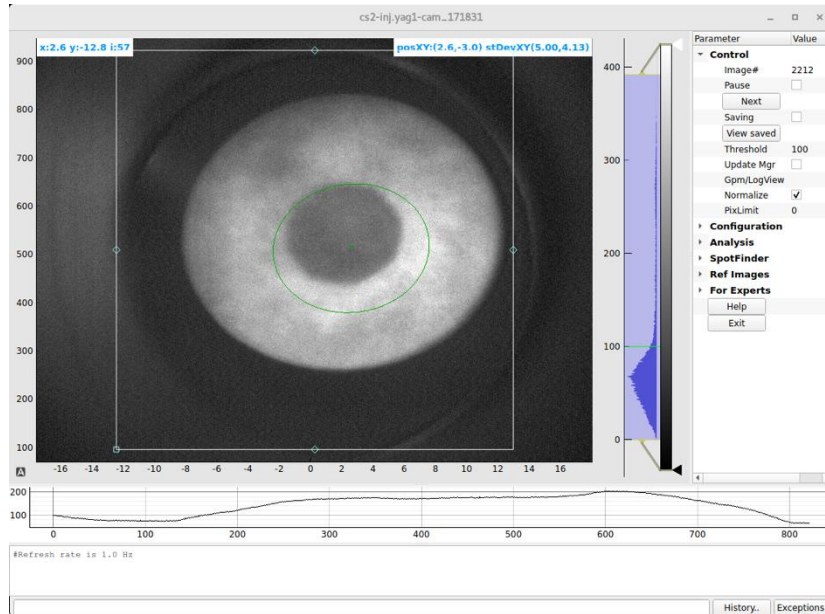


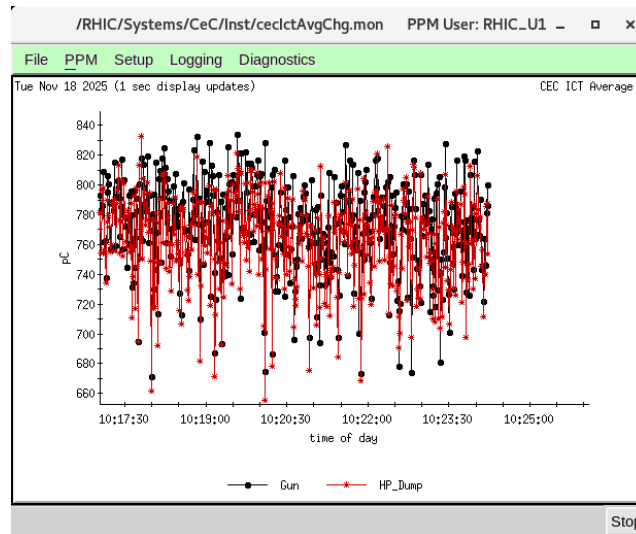
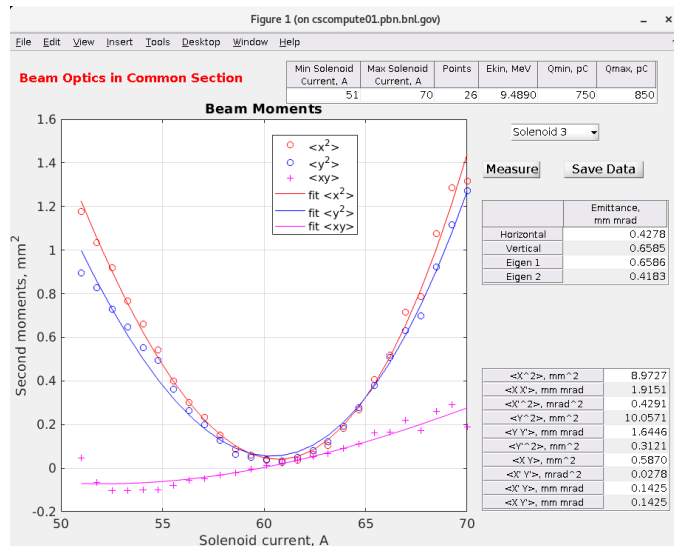
# CeC status – 11/18/25

## NaKSb cathodes evolution

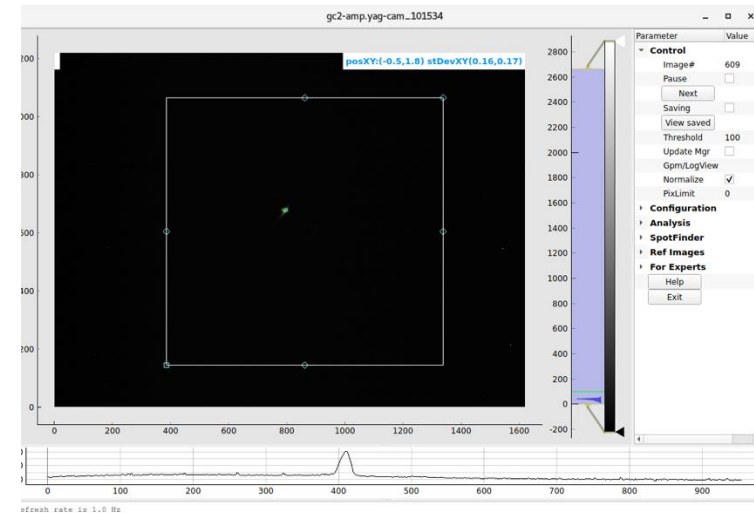


- Old cathode has an imprint from laser spot where QE is about half of other places.
- Overall QE dropped below 0.2%. It was replaced with a new one during maintenance.
- New cathode has good uniformity across the region of interest and QE ~ 0.9 – 1%.
- QE of the new cathode dropped to ~ 0.45 – 0.5% during the weekend. Seems to be stable now.

# Electron beam in common section

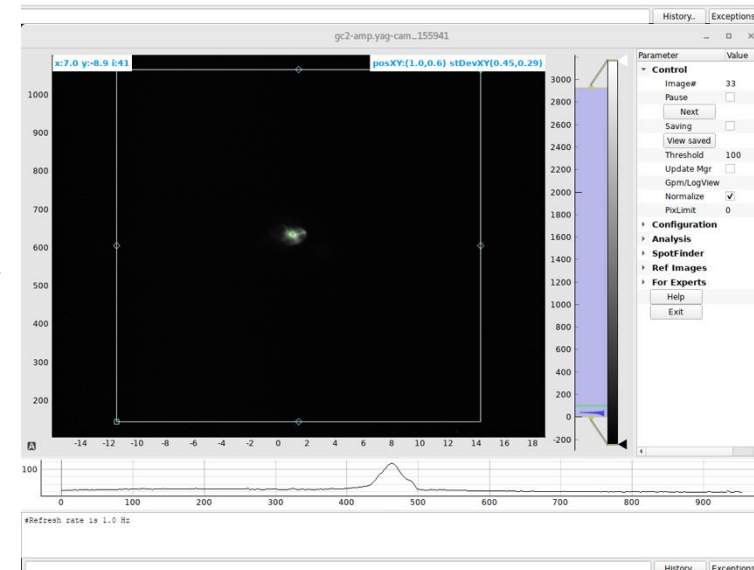


## Yag in IP2



Focal point

- Tune/measure electron beam using common section yag when RHIC is down.
- Find matching conditions to match to close to round beam for all solenoid focusing.
- Improve transmission to high power dump (final dump) to close to 100%
- Bolometer still has no observable signals from electron beam.



Over focused