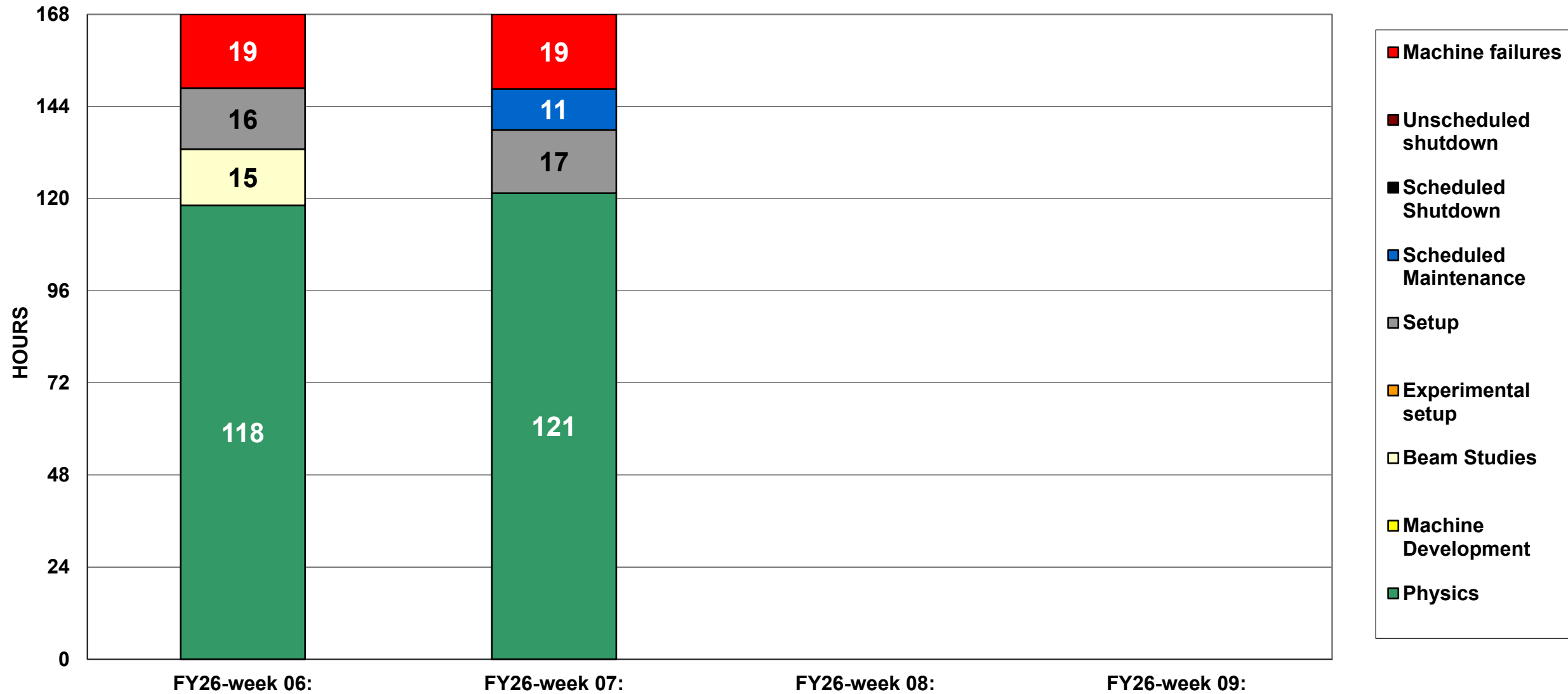
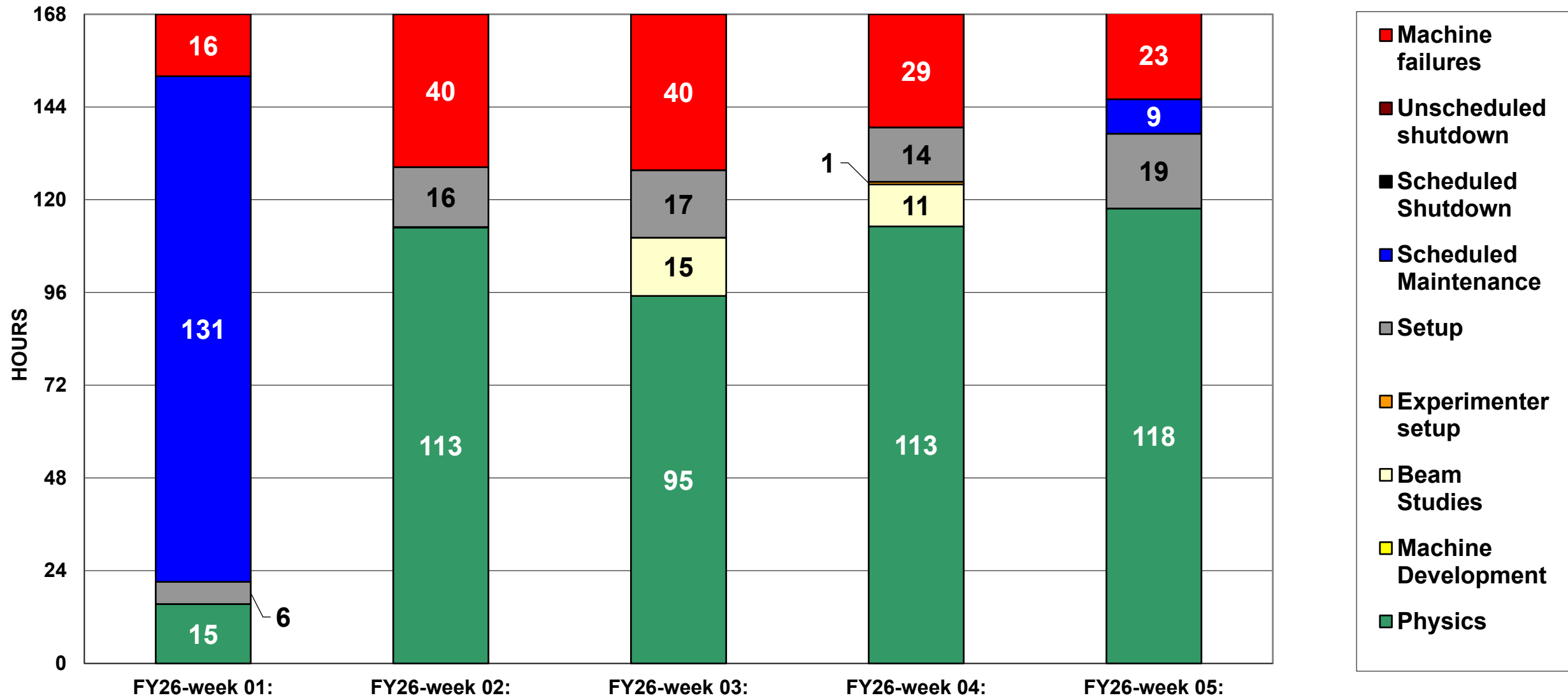


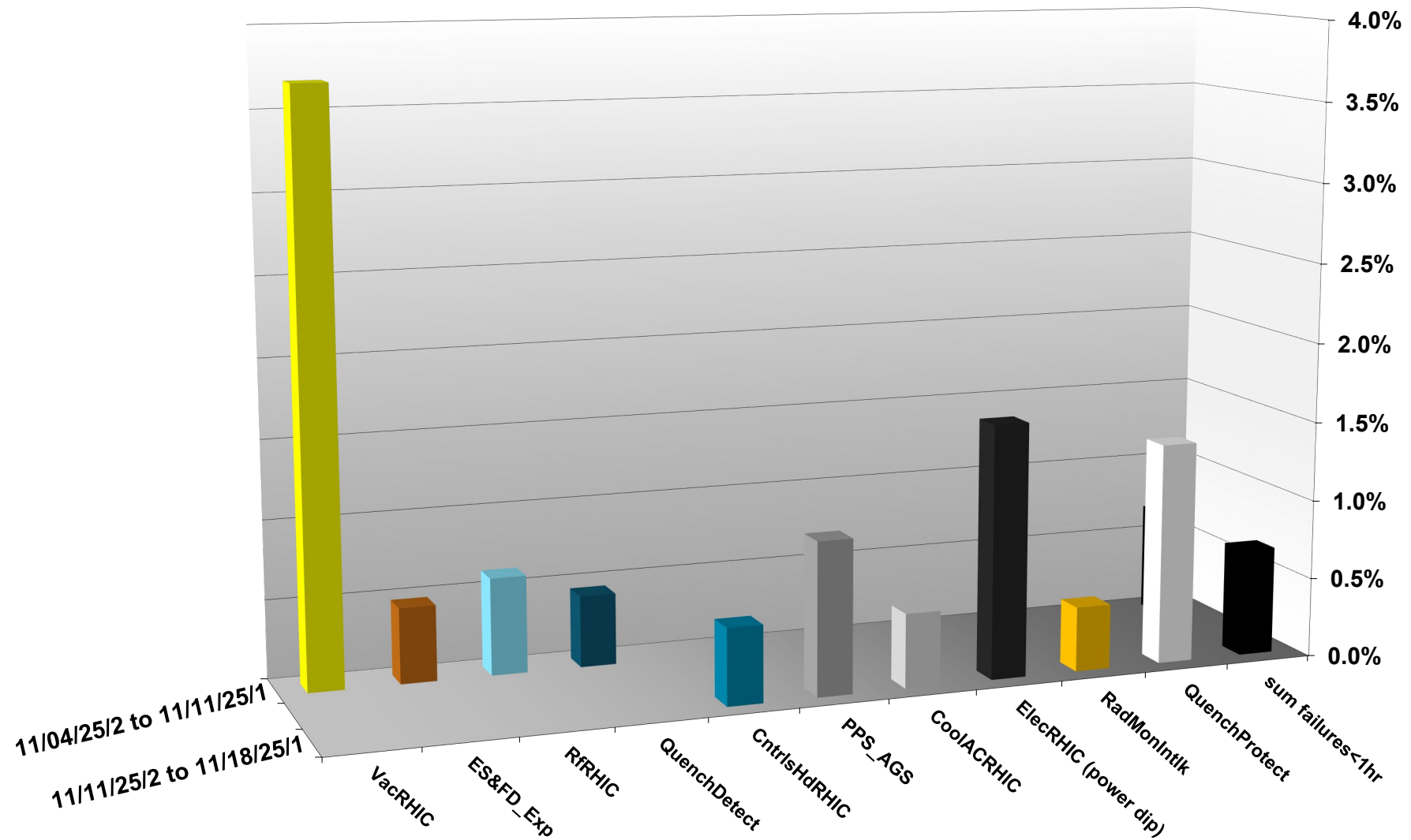
C-AD ACTIVITY NOVEMBER 2025



C-AD ACTIVITY October 2025



INTEGRATED FAILURES (GREATER THAN ONE HOUR) BY SYSTEM -- NOVEMBER 2025



NSRL activity past weeks: 11/4-18/2025 (as of 0800)

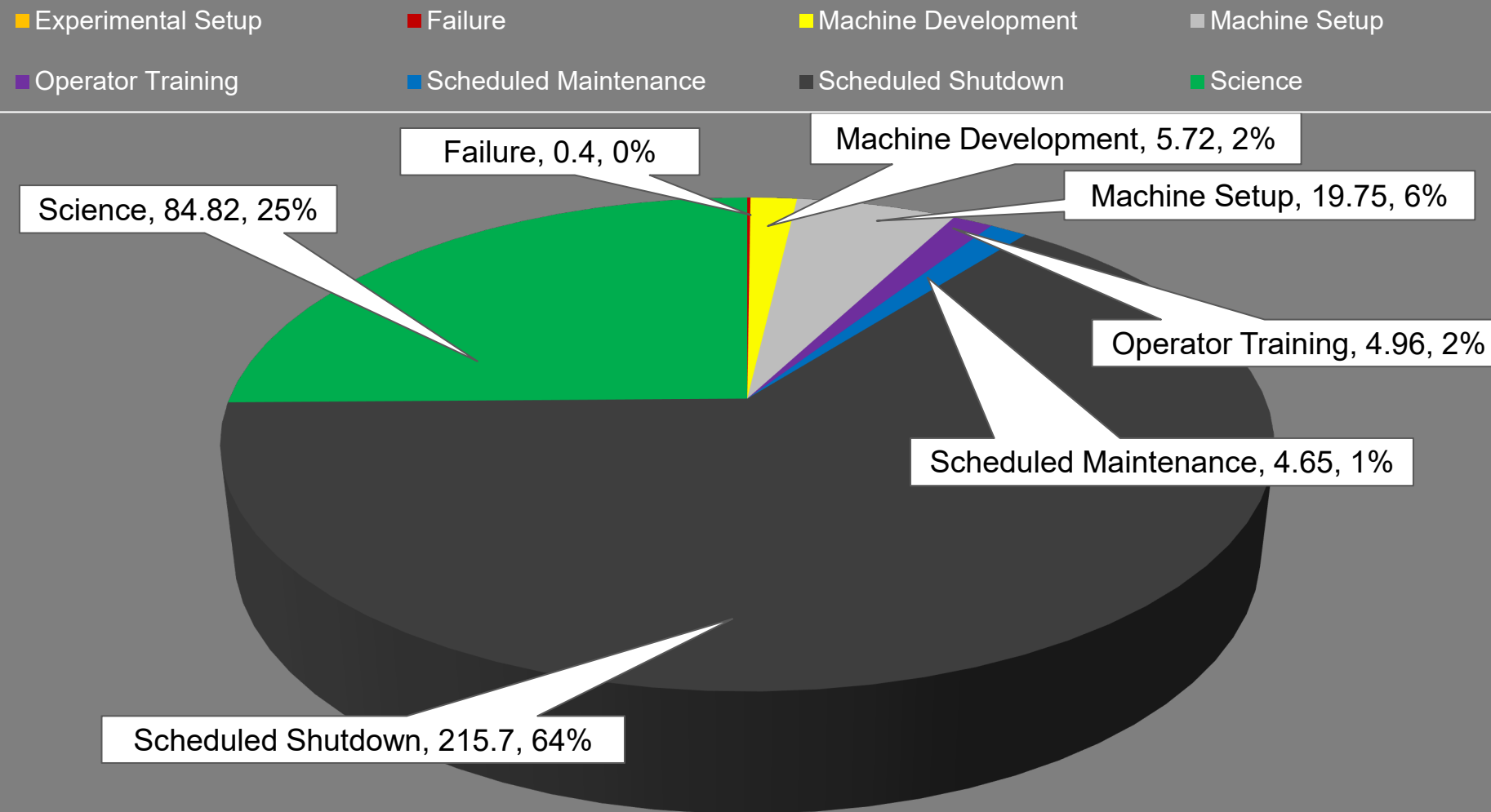
NSRL running continues.

Various setup and user beam time through the week.

8 EBIS species (H3/C, Fe, Kr, Ag, Nb, Ta, Au, Bi), Tandem Au logged to NSRL

Run 25-C began 30 June; concluded 31 October.
Run 26-A **schedule posted** with users up to 19 December.

NSRL Hours



Availability: 99.7%

Notes from Operations

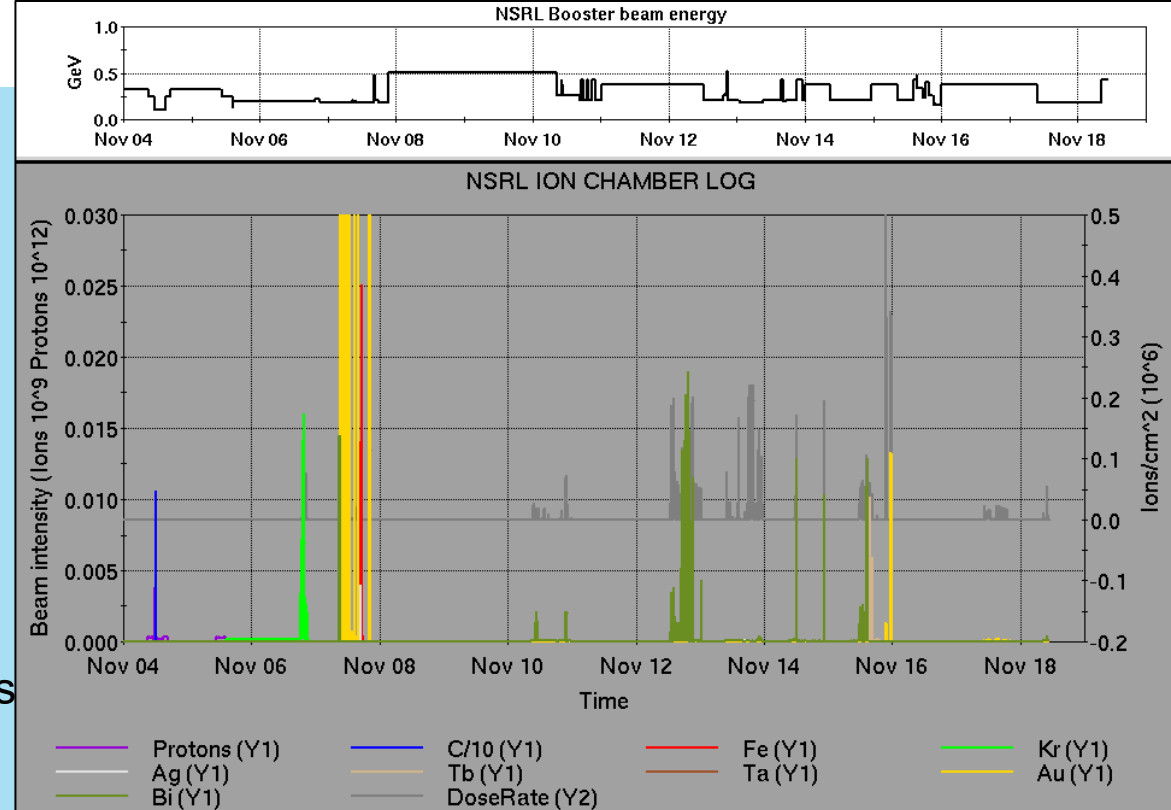
Notable failures (>1 hr)

- sPHENIX TPC trip following beam abort, beam restoration delayed
- MPS beam abort, 56MHz insulating vacuum failure, roughing pump replaced
- Yellow QLI, quench detector 4b-qd2 comm failure
- AGS A5 kicker replacement PS failure, original reinstalled
- Blue QLI at injection, failed QPA for bi5-qf1-ps replaced
- Beam abort, 1a-ps1 FEC failure due to HVAC failures
- Controls failure, access encountered cfe-5c-ps1 UPS failed; disconnected
- Power dip affecting systems across the complex; RHIC BS5 required call-in to replace grid PS.
- EBIS linac drift quad PS failure, no spare IGBT; other modules installed

Other notes

- AGS RF station KL failure, grid PS repaired
- BLM beam abort at store, undiagnosed
- BLM abort at store, gap cleaner setup issues
- BLM permit filling yellow, AtR retuned
- BLM beam abort on ramp, BBQ lost tune lock
- AGS RF station JK crowbar fault, access required
- STAR, sPHENIX accesses
- NQBPS beam abort, bad voltage readback on yo9-qf2-ps masked
- Other various trips, resets, tuning, foil changes (58 resets logged, in addition to short failures)

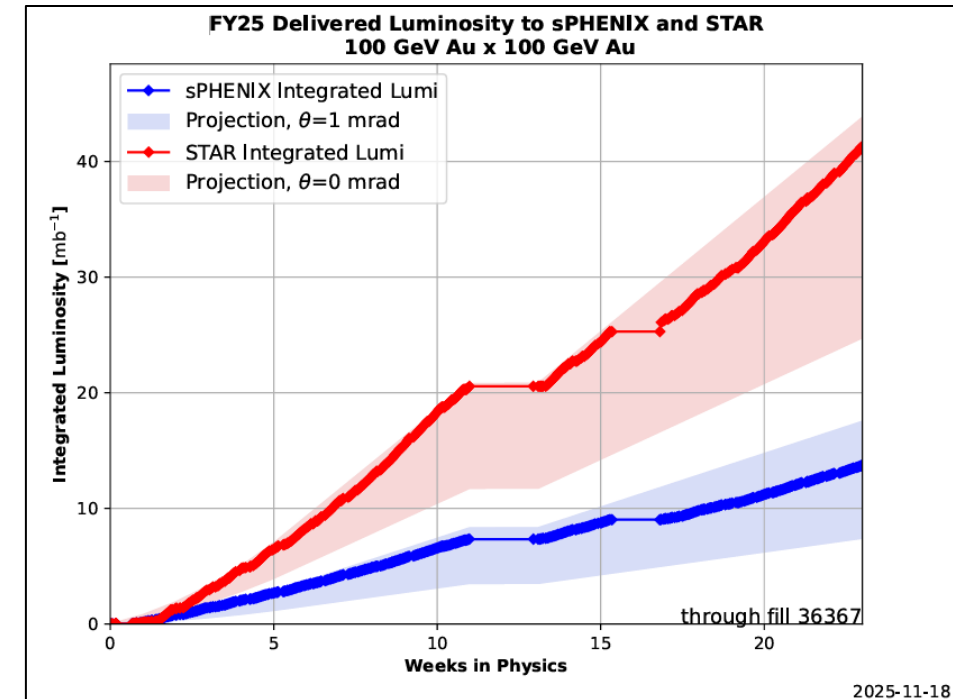
Over 45 hours CeC time logged this week; 189 hours OPPIS to HEBT, polarized proton setup in AGS.



	Linac	Tandem	EBIS	Booster	AGS	ATR	RHIC	ERL	Other	Total
Total	40 (19)	10 (67)	0 (6)	12 (6)	6 (14)	20 (0)	424 (16)	0 (0)	17 (9)	529 (137)
RF	1 (0)	0 (0)	0 (0)	1 (1)	2 (0)	0 (0)	1 (3)	0 (0)	8 (6)	13 (10)
PS	35 (9)	10 (45)	0 (4)	5 (1)	3 (7)	14 (0)	34 (0)	0 (0)	1 (2)	102 (68)
Vacuum	0 (0)	0 (22)	0 (2)	0 (3)	0 (0)	0 (0)	5 (13)	0 (0)	1 (0)	6 (40)
Inst	0 (0)	0 (0)	0 (0)	0 (1)	0 (2)	5 (0)	4 (0)	0 (0)	4 (1)	13 (4)
Other	4 (10)	0 (0)	0 (0)	6 (0)	1 (5)	1 (0)	380 (0)	0 (0)	3 (0)	395 (15)

Reminder from Operations

- MCR beam operations continue
 - RHIC physics continues
 - Tandem (MP7) remains sole provider of Au31 for RHIC
 - NSRL shifts scheduled for users & MD, 5 days/2 shifts.
 - Au31 from Tandem for higher intensity
 - Other ion beams from EBIS;
 - H₂ intended for H delivery
 - H₃ production at source TBD
 - BLIP run anticipated 12/19 pending Mod 7 and other issues. ORC in progress.
 - AGS tuning, pp setup, other studies to continue behind stores as time allows.
 - MCR shift coverage 24/7.



Availability: RHIC Run-25

