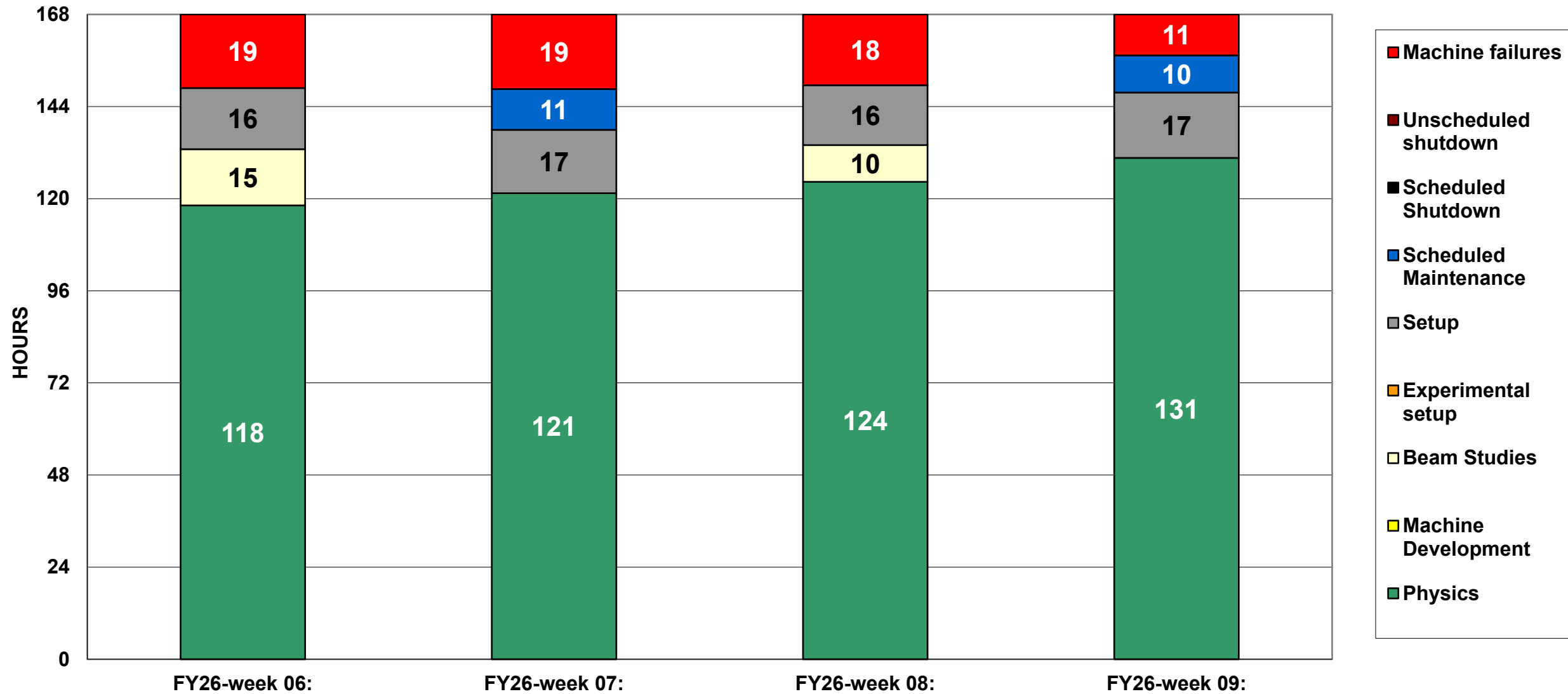
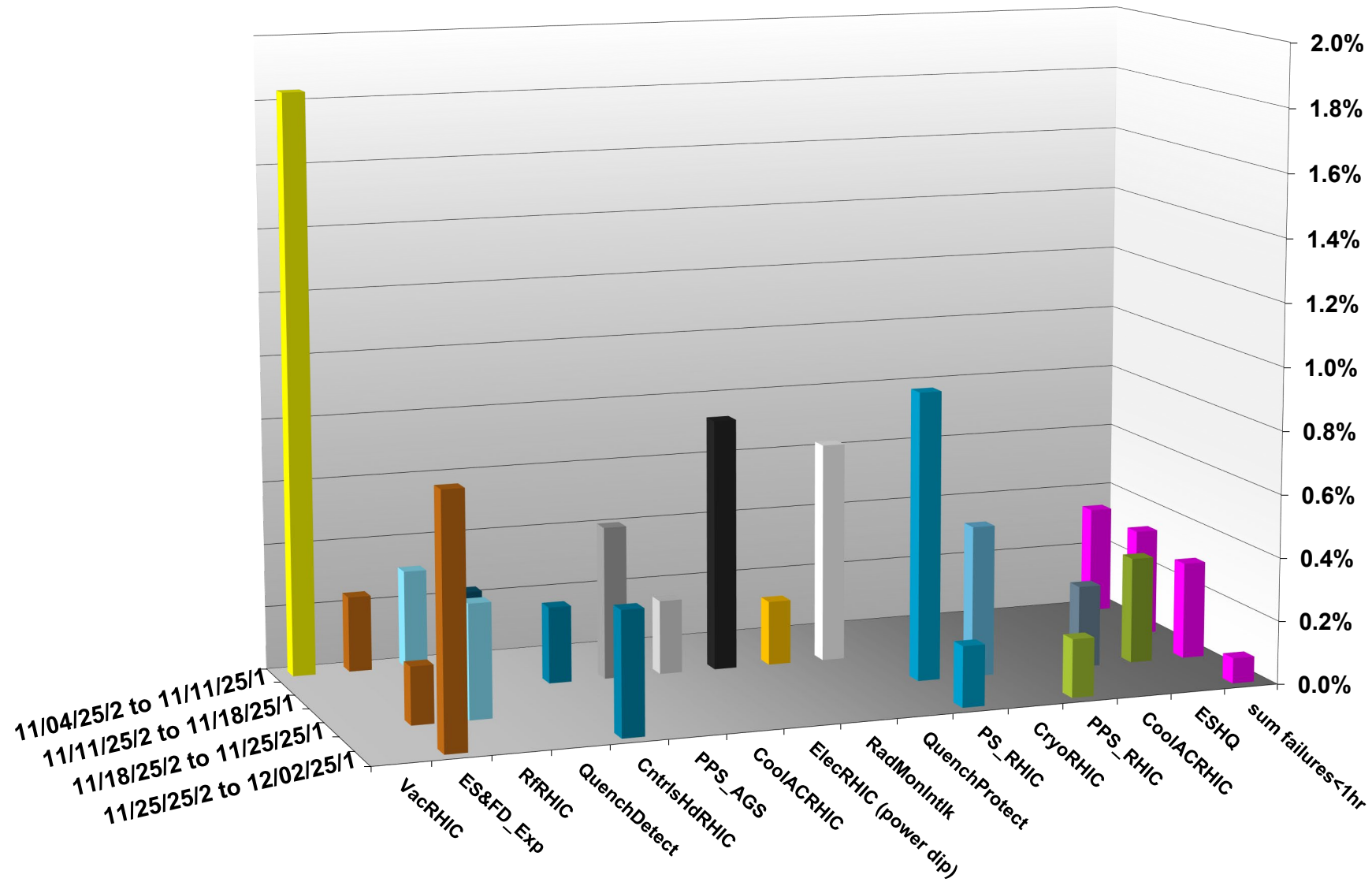


C-AD ACTIVITY NOVEMBER 2025



INTEGRATED FAILURES (GREATER THAN ONE HOUR) BY SYSTEM -- NOVEMBER 2025



NSRL activity past weeks: 11/25-12/2/2025 (as of 0800)

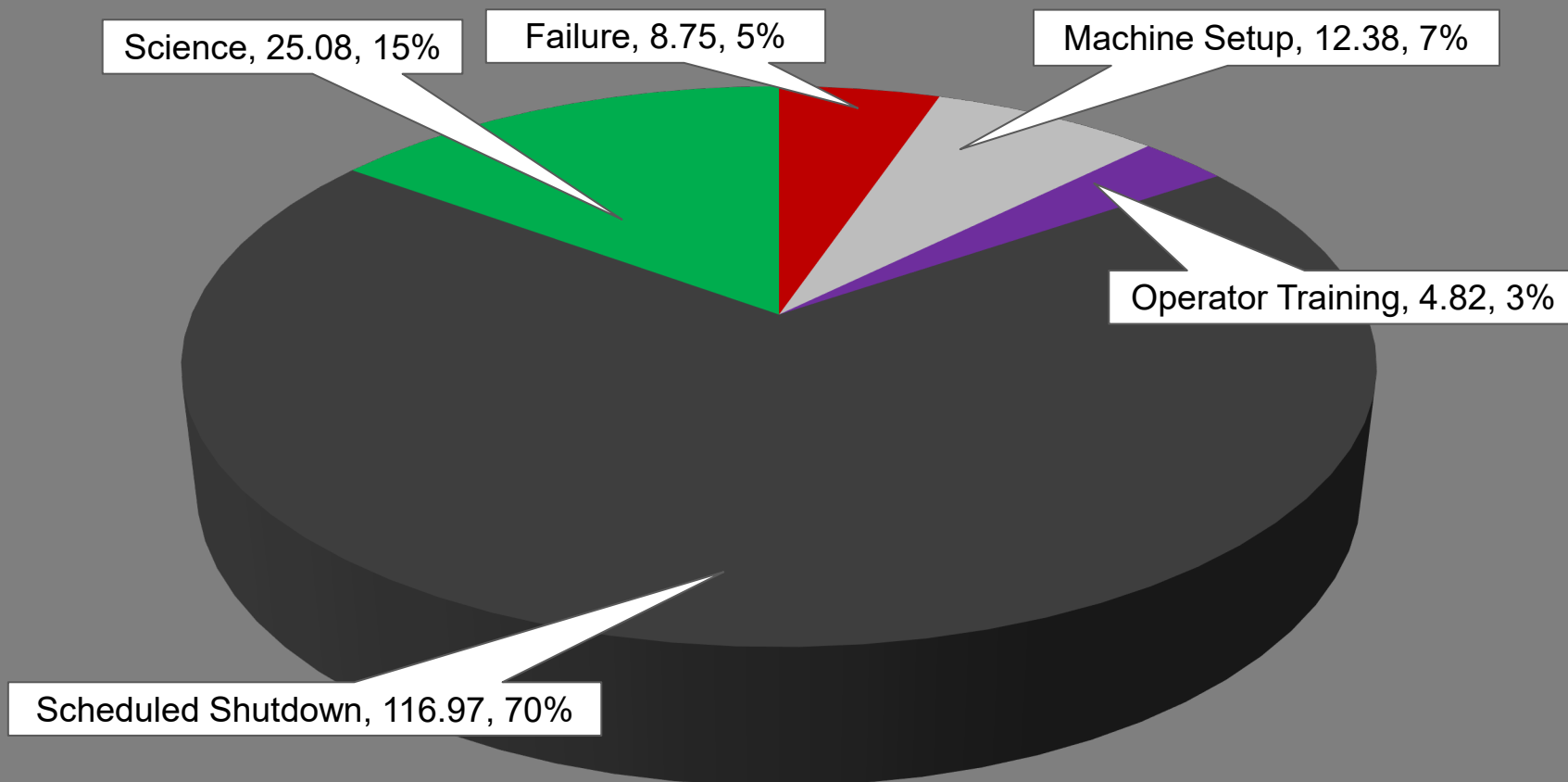
NSRL running continues.

Various setup and user beam time through the week.

12 EBIS species, Tandem Au, Linac protons logged to NSRL

Run 26-A continues, **schedule posted** with users up to **21 December**.

NSRL Hours



Notes from Operations

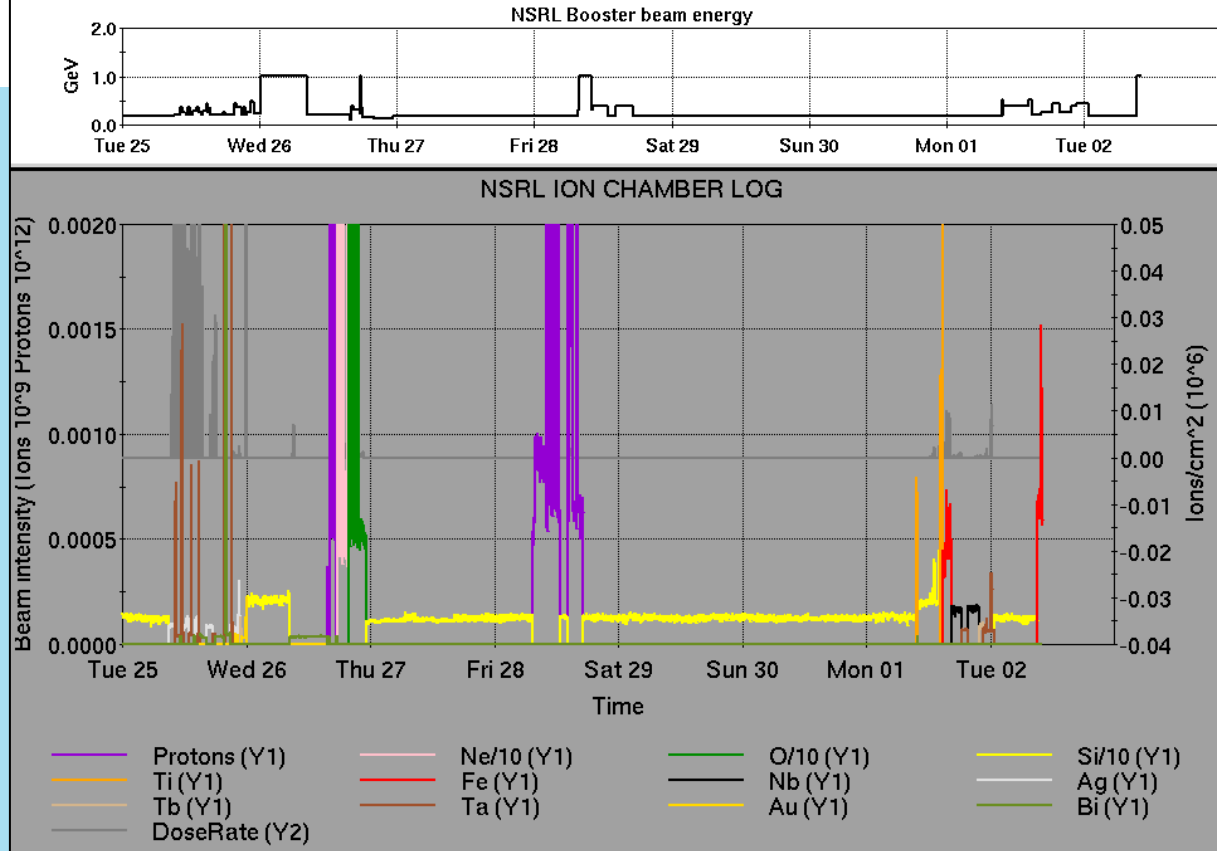
Notable failures (>1 hr)

- sPHENIX work on TPC extends beyond maintenance period.
- Yellow injection kicker failure, ALE faults; work extended beyond store
- Beam abort, Controls failure of 4b-rtdI, Blue QLI, extensive recovery of various systems, including sPHENIX magnet
- sPHENIX access for TPC issue (2x)
- Booster MMPS trip on water fault, leak repaired
- EBIS 16-pole deflector bias PS failure; replaced

Other notes

- Other STAR, sPHENIX accesses
- RHIC RF station YS2, BS5 trips required expert assistance
- AGS sector A ion pumps tripped, closing vacuum valves; reset behind store
- STAR Trim West magnet trip, CAS recovered
- Tandem MP7 tuning, delayed dump
- bi8-tv8-ps failure, removed from operating
- Other various trips, resets, tuning, foil changes (16 resets logged, in addition to short failures)

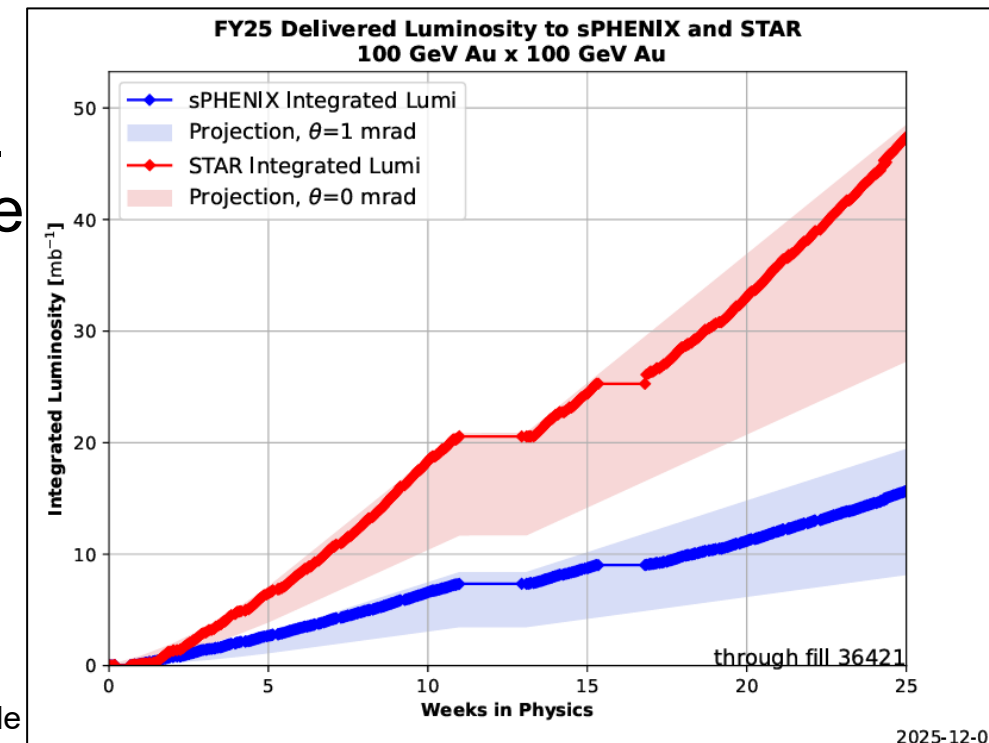
Over 19 hours CeC beam; 8 hours polarized beam development, other setup behind stores this week.



	Linac	Tandem	EBIS	Booster	AGS	ATR	RHIC	ERL	Other	Total
Total	18 (19)	11 (27)	0 (6)	7 (7)	6 (14)	4 (0)	388 (14)	0 (0)	22 (9)	456 (96)
RF	2 (0)	0 (0)	0 (0)	1 (1)	1 (0)	0 (0)	0 (3)	0 (0)	9 (6)	13 (10)
PS	12 (9)	10 (5)	0 (4)	4 (2)	4 (7)	2 (0)	5 (0)	0 (0)	2 (2)	39 (29)
Vacuum	0 (0)	0 (22)	0 (2)	0 (3)	0 (0)	0 (0)	2 (11)	0 (0)	0 (0)	2 (38)
Inst	0 (0)	1 (0)	0 (0)	0 (1)	0 (2)	1 (0)	0 (0)	0 (0)	6 (1)	8 (4)
Other	4 (10)	0 (0)	0 (0)	2 (0)	1 (5)	1 (0)	381 (0)	0 (0)	5 (0)	394 (15)

Reminder from Operations

- MCR beam operations continue
 - RHIC physics continues
 - Tandem (MP7) remains sole provider of Au31 for RHIC
 - NSRL shifts scheduled for users & MD, 2 shifts/6 days this week, 5 days next.
 - Au31 from Tandem for higher intensity
 - Protons from Linac OPPIS
 - Other ion beams from EBIS
 - BLIP run cancelled for December.
 - ORC in progress, but no planned beam in BLIP line.
 - AGS tuning, pp setup, other studies to continue behind stores as time allows.
 - MCR shift coverage 24/7



Availability: RHIC Run-25

