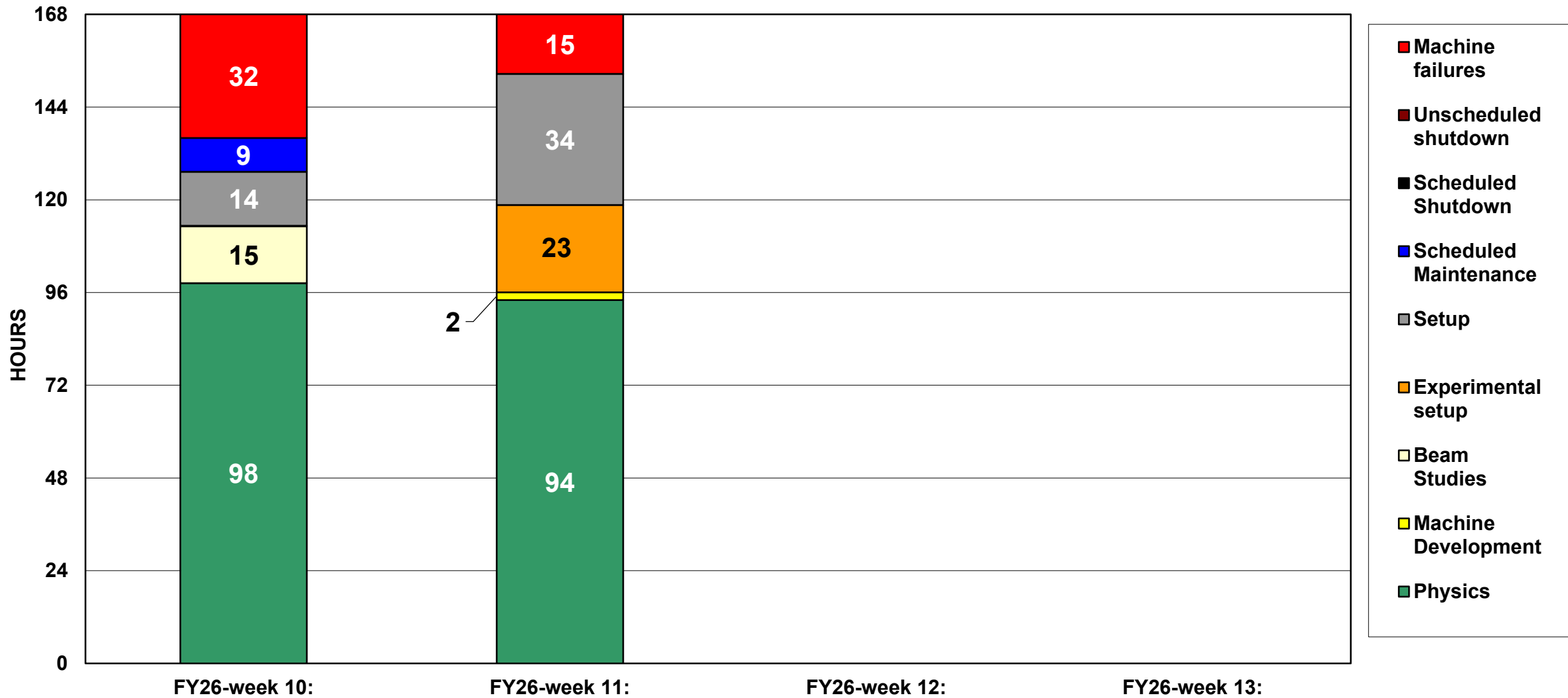
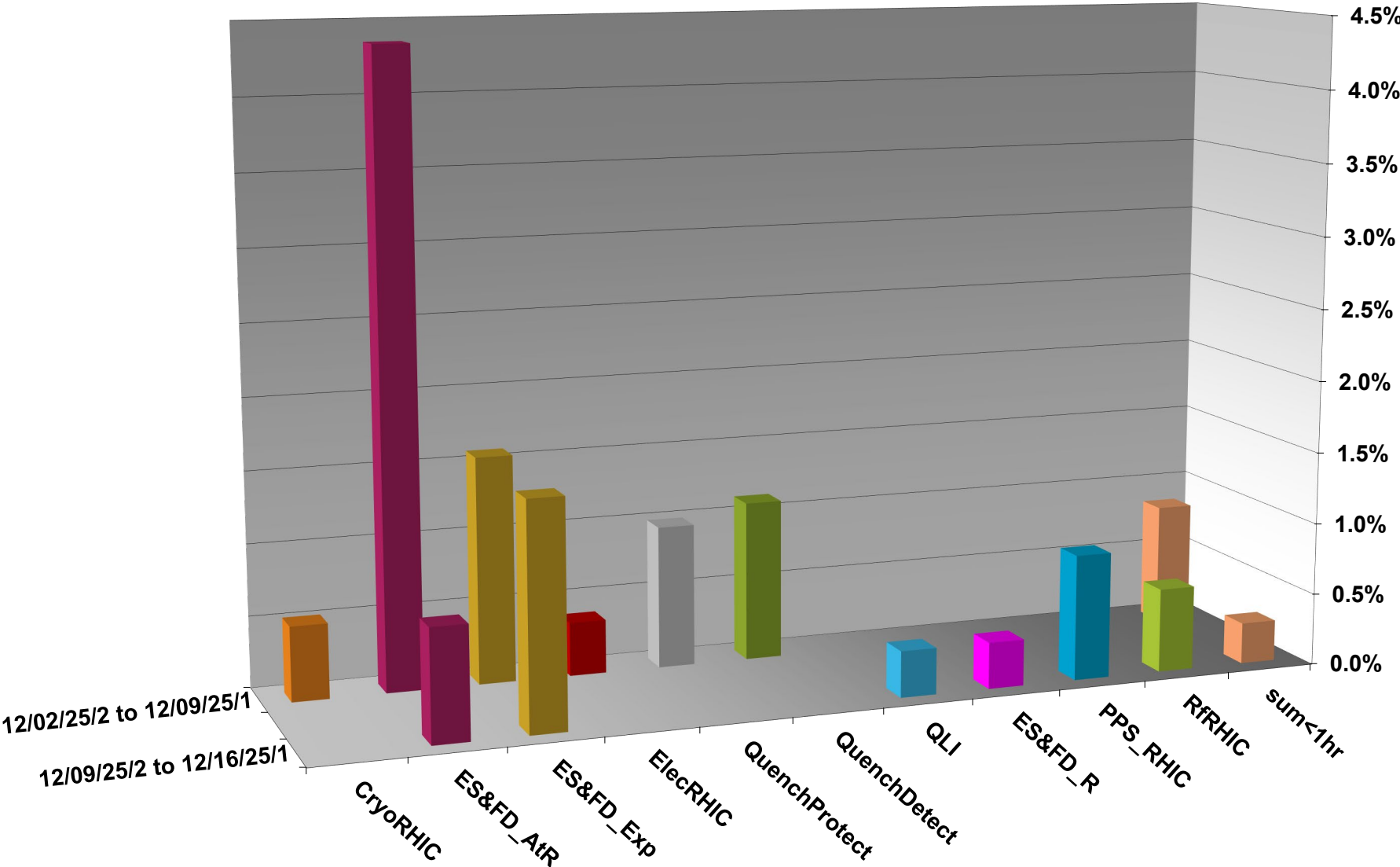


C-AD ACTIVITY DECEMBER 2025



INTEGRATED FAILURES (GREATER THAN ONE HOUR) BY SYSTEM DECEMBER 2025



NSRL activity past weeks: 12/9-16/2025 (as of 0800)

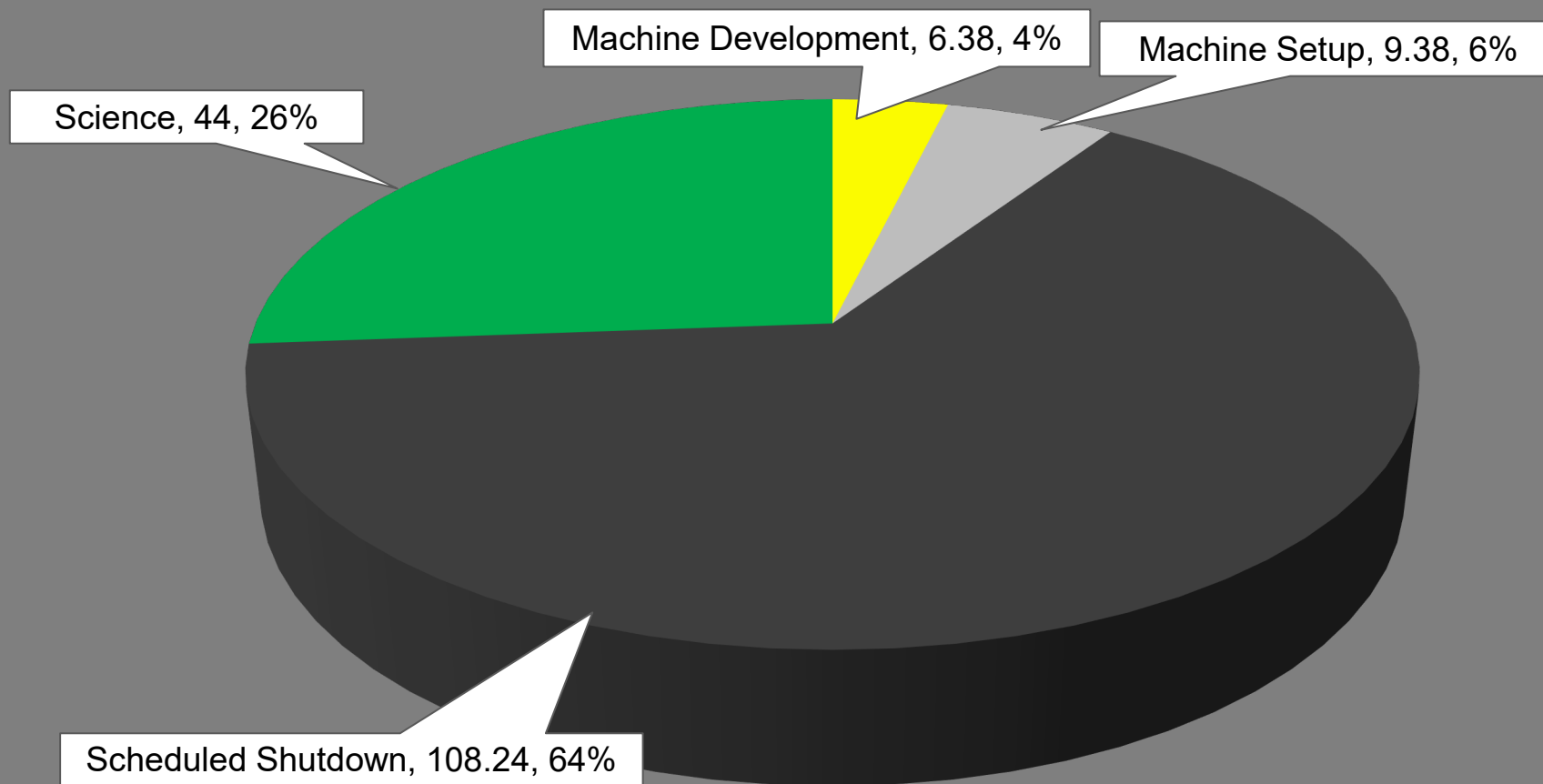
NSRL running continues.

Various setup and user beam time through the week.

4 EBIS species, Linac protons logged to NSRL

Run 26-A continues, **schedule posted** with users up to **30 January**.

NSRL Hours



Availability: 100%

Notes from Operations

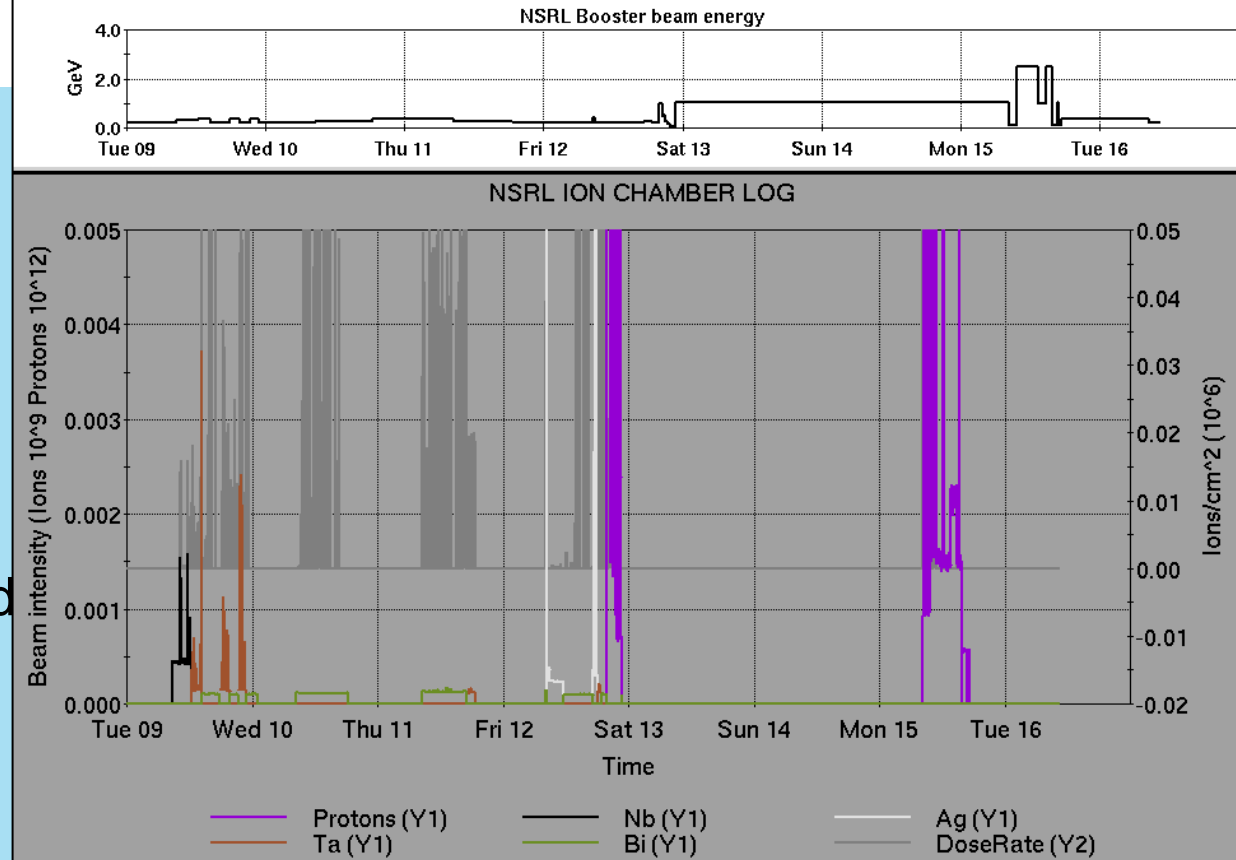
Notable failures (>1 hr)

- AtR Uarc4 PS (UD1&2) main breaker failed, replaced
- sPHENIX access for detector water leak
- Yellow QLI beam abort; cause unknown
- RHIC blue abort kicker failure at injection; prime fault bypassed
- sPHENIX access for TPC trouble
- Sector 12 access for H-jet failure, He line replaced
- RHIC ACS failure, sector 2 remote I/O failure

Other notes

- Yellow injection kicker PS failure (2x), blumlein oil fault due to suspected air in system
- AGS IPM vacuum failures, leak valves secured and repaired
- AGS E20 warm snake PS noise issues, various repairs
- BLM, RF permit beam aborts on ramp, various issues addressed
- Other various trips, resets, tuning, foil changes (27 resets logged, in addition to short failures)

Over 65 hours polarized beam development and other setup behind stores this week

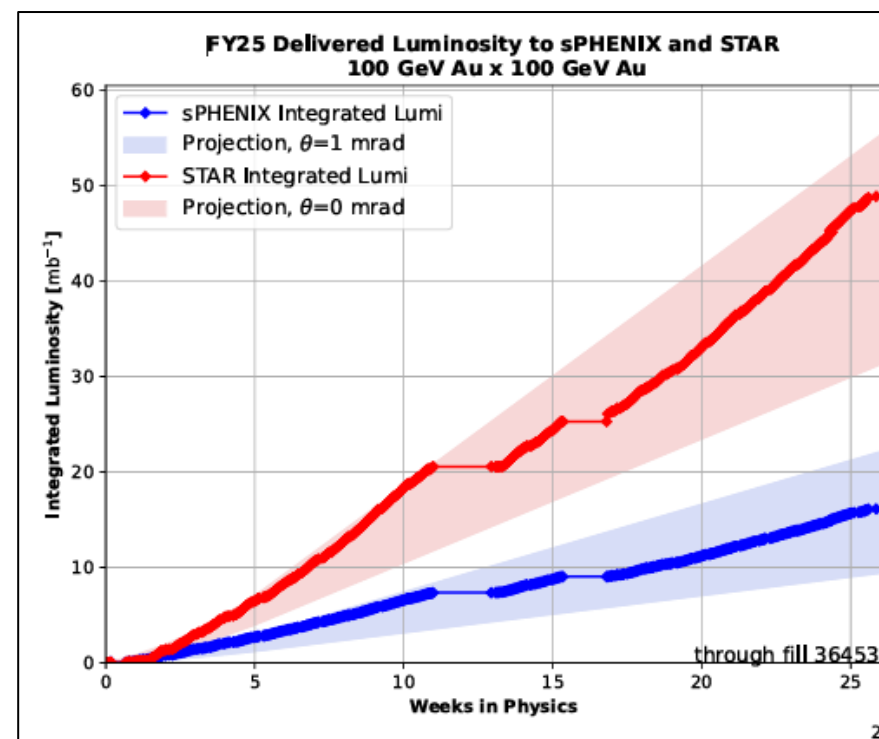


	Linac	Tandem	EBIS	Booster	AGS	ATR	RHIC	ERL	Other	Total
Total	2 (34)	10 (29)	0 (6)	10 (7)	15 (14)	1 (0)	6 (16)	0 (0)	22 (9)	66 (115)
RF	0 (0)	0 (0)	0 (0)	1 (1)	0 (0)	0 (0)	0 (3)	0 (0)	9 (6)	10 (10)
PS	1 (20)	9 (7)	0 (4)	3 (2)	11 (5)	1 (0)	2 (0)	0 (0)	2 (2)	29 (40)
Vacuum	0 (0)	0 (22)	0 (2)	0 (3)	2 (2)	0 (0)	4 (13)	0 (0)	0 (0)	6 (42)
Inst	0 (0)	1 (0)	0 (0)	0 (1)	0 (2)	0 (0)	0 (0)	0 (0)	6 (1)	7 (4)
Other	1 (14)	0 (0)	0 (0)	6 (0)	2 (5)	0 (0)	0 (0)	0 (0)	5 (0)	14 (19)

Reminder from Operations

- MCR beam operations continue

- RHIC physics continues this week with polarized protons from LINAC
- NSRL shifts scheduled for users & MD, 2 shifts/5 days this week, 0(1?) days next.
 - Protons from Linac OPPIS
 - Other ion beams from EBIS
- BLIP target production not scheduled until March.
 - Beam in BLIP line **ORC cancelled**, due to **pending restart authorization**.
- AGS tuning, **pp setup**, other studies to continue behind stores as time allows.
- *MCR shift coverage 24/7*



Availability: RHIC Run-25

