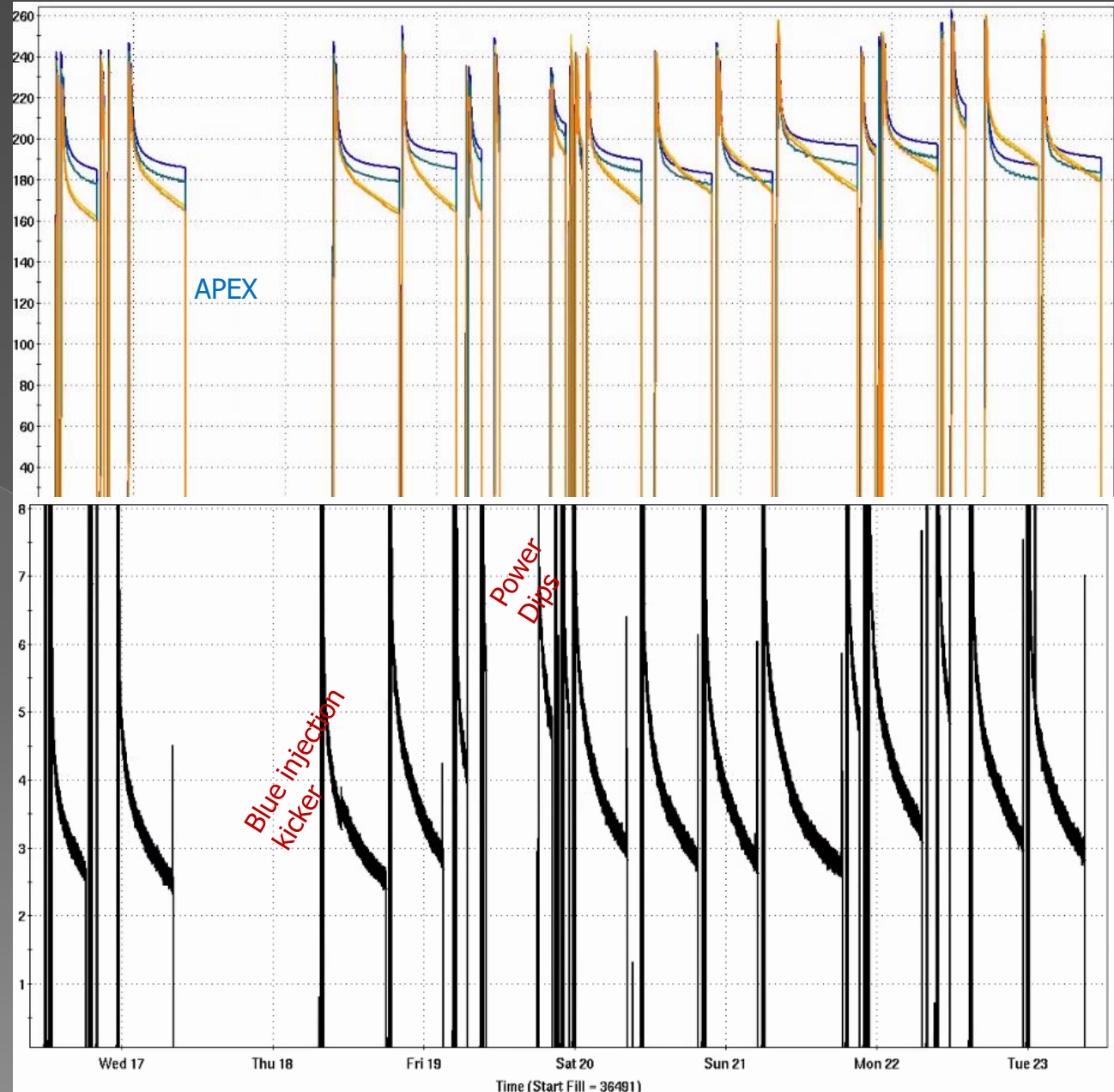




# PP Running

- Ramp up period is effectively done
  - > Ramp efficiency is 99.9%
  - > Injection efficiency 95-97%
- 56 MHz damping found in the wrong state Thursday night, after fixing that emittances dropped by 30% and the 1 H-jet measurement shows polarization of ~58%
- High uptime except for a series of power dips on Friday that kept us off most of the day
- ZDC rates are low when comparing to Run24; sPHENIX mbd trigger rates show we are much closer. ZDC and cross section will be adjusted in January when we do a vernier scan.



# Moving ahead

- No scheduled maintenance or APEX before 1/7
- Check your group's call-in lists!
- Absent large failures, lumi projection (with low ZDCs) estimates hitting  $25 \text{ pb}^{-1}$  on  $\sim 1/8$

