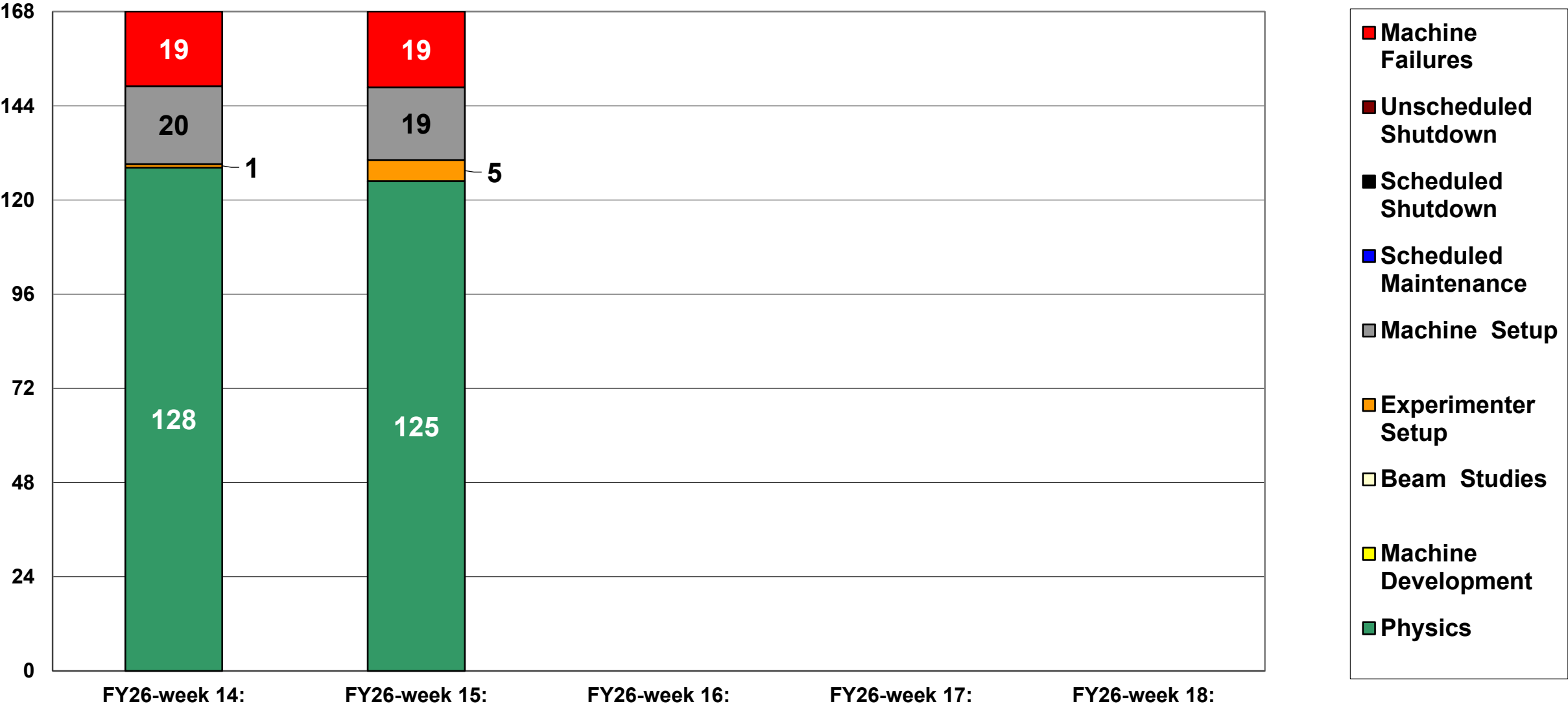
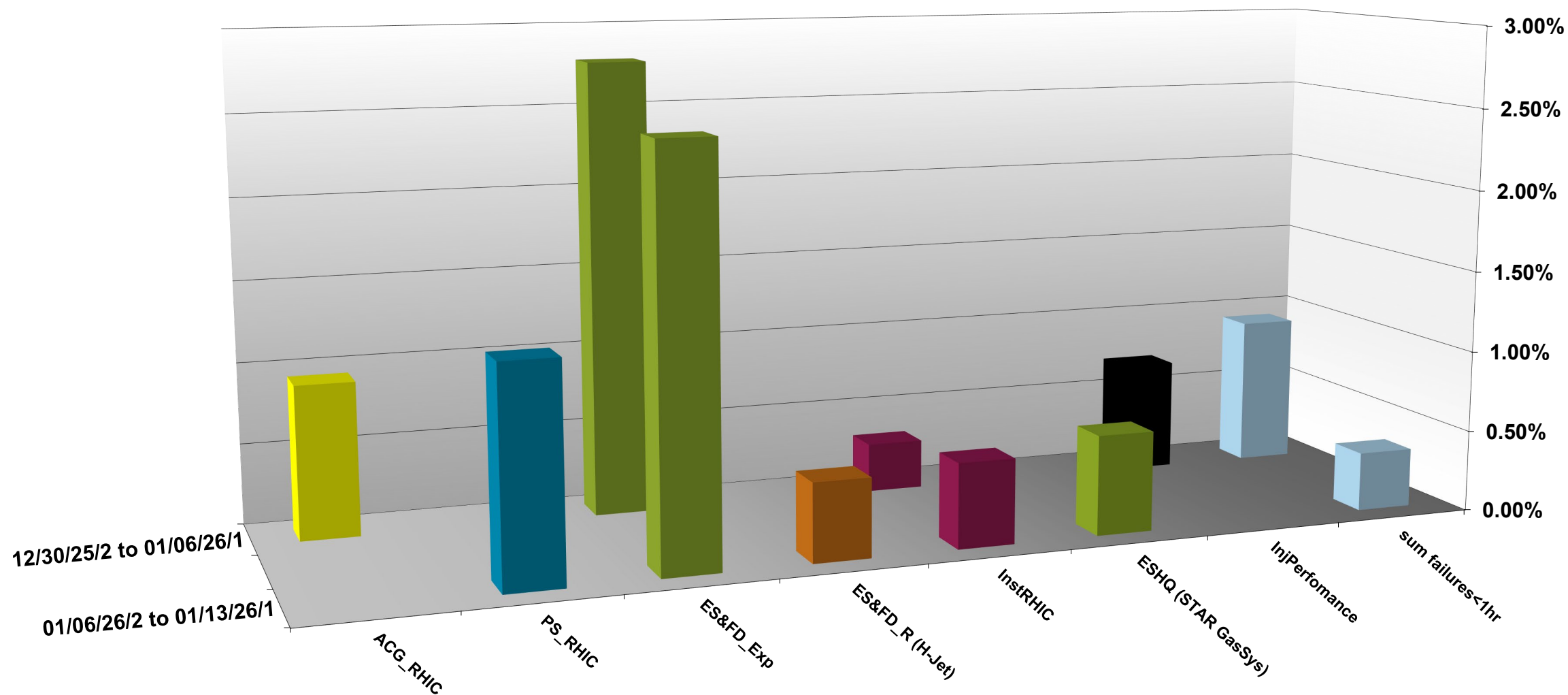


# C-AD ACTIVITY    January 2026



## INTEGRATED FAILURES (GREATER THAN ONE HOUR) BY SYSTEM -- January 2026



# NSRL activity past weeks: 1/6-13/2026 (as of 0800)

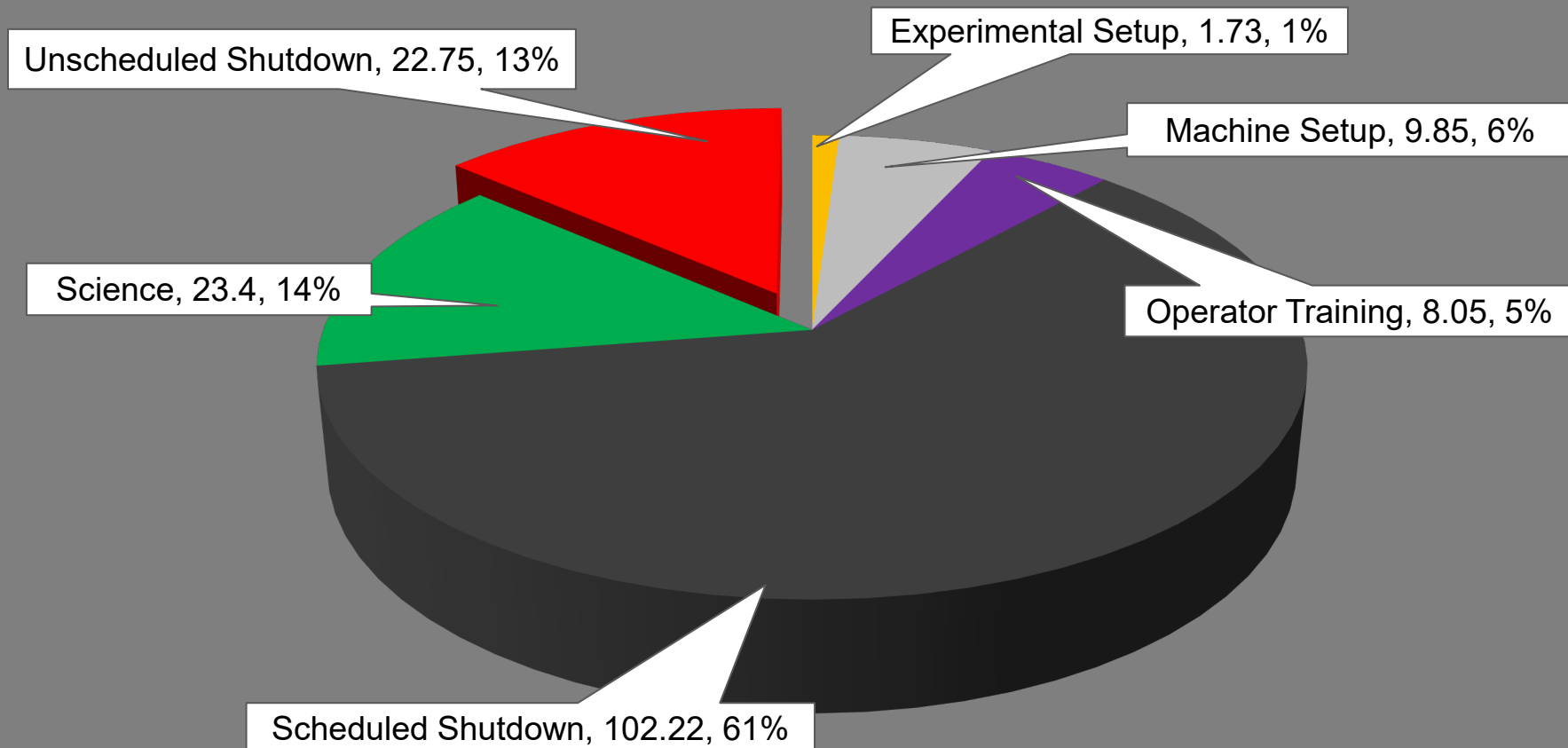
NSRL running resumed following completion of ORC.

Linac protons, 9 EBIS ions in use (O, Si, Ti, Fe, Nb, Ag, Tb, Bi, H<sub>2</sub>)

Run 26-A continues, **schedule posted** with users up to **3 April**.

## NSRL Hours

Experimental Setup   Failure   Machine Development   Machine Setup   Operator Training  
Scheduled Maintenance   Scheduled Shutdown   Science   Unscheduled Shutdown



**Availability: 65.4%**

# Notes from Operations

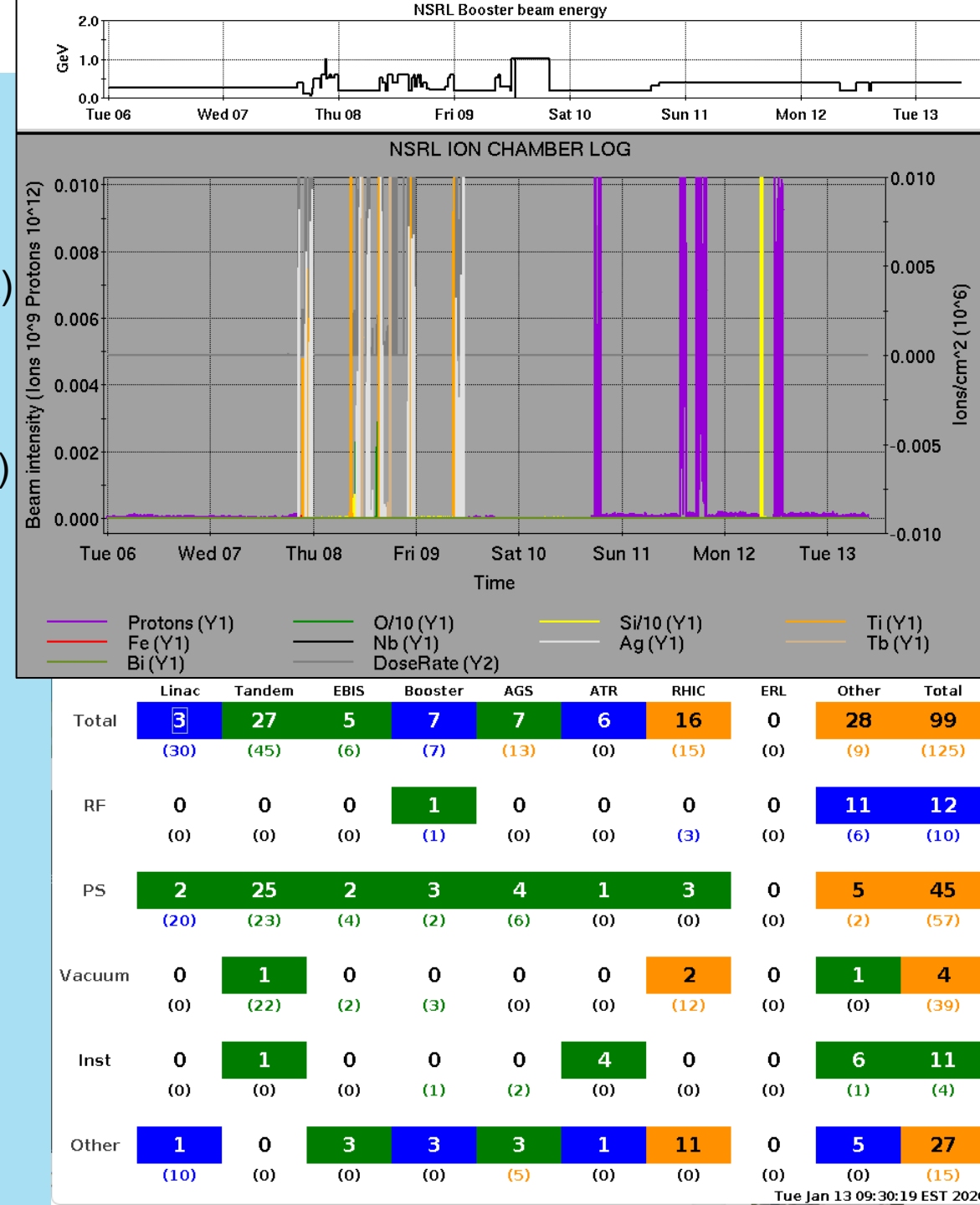
## Notable failures (>1 hr)

- NSRL operations halted due to expired checklist; resumes following Chair approval
- Accesses for sPHENIX system failures
- STAR magnet cooling issues/ramp tests/trips (5x)
- STAR gas system monitor alarms, access for recalibration (3x)
- Accesses for H-jet repairs (2x)
- yi2-tq6 failure, PS replaced
- sPHENIX TPC issues, requiring access
- Beam abort, Yellow QLI; yo9-qd7 ZFCT card replaced
- sPHENIX TPC issues after beam abort, requires no beam (2x)

## Other notes

- Linac compressor failure affects Booster ACS, Linac RF, vacuum valves. Access required to restore operations; *store extended*.
- Injector beam not ready, Booster corrector PS failure. PLC reset; *store extended*
- Linac Mod 2 failure, PLC cycled requiring restoration behind store
- Linac Mod 5 tank quad pulser failure (2x)
- BPM beam abort, corrector PS trip
- BLM beam abort, BBQ lock issues; multiple controls resets
- LtB current transformer interlocks, and will not reset remotely.
- CNI polarimeter failure, NIM crates reset
- BPM beam abort, Yellow MPS board reset
- Other various trips, resets, tuning

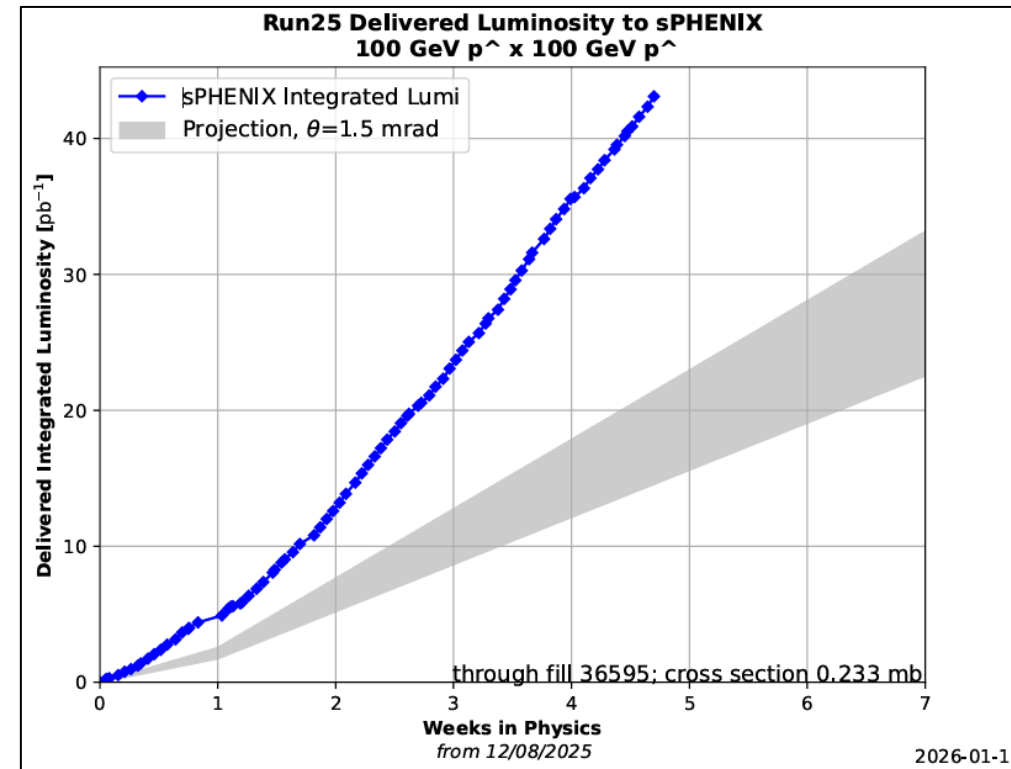
Polarized beam development, H<sub>2</sub> and other setup, training behind stores this week



# Reminder from Operations

- MCR beam operations continue

- RHIC physics continues this week with polarized protons from LINAC
- NSRL shifts scheduled for users & MD, 2 shifts/3 days this week, 2 days next.
  - Protons from Linac OPPIS.
  - Other ions, molecular beams from EBIS.
- BLIP target production not scheduled until March.
  - Beam from high intensity source in BLIP line anticipated 27 February, pending restart authorization and valid ORC.
- AGS tuning, other studies to continue behind stores as time allows.
- *MCR shift coverage 24/7*



# Availability: RHIC Run-25

