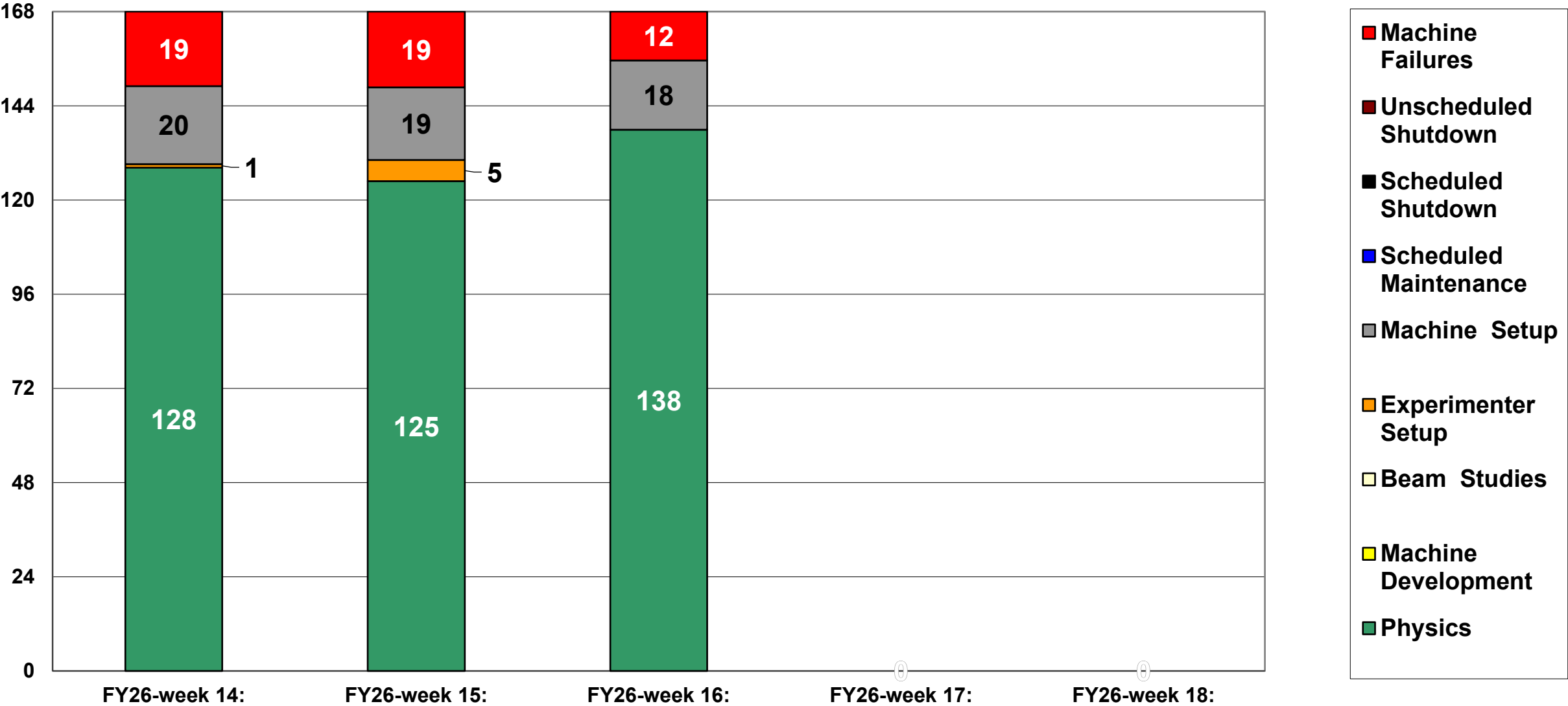
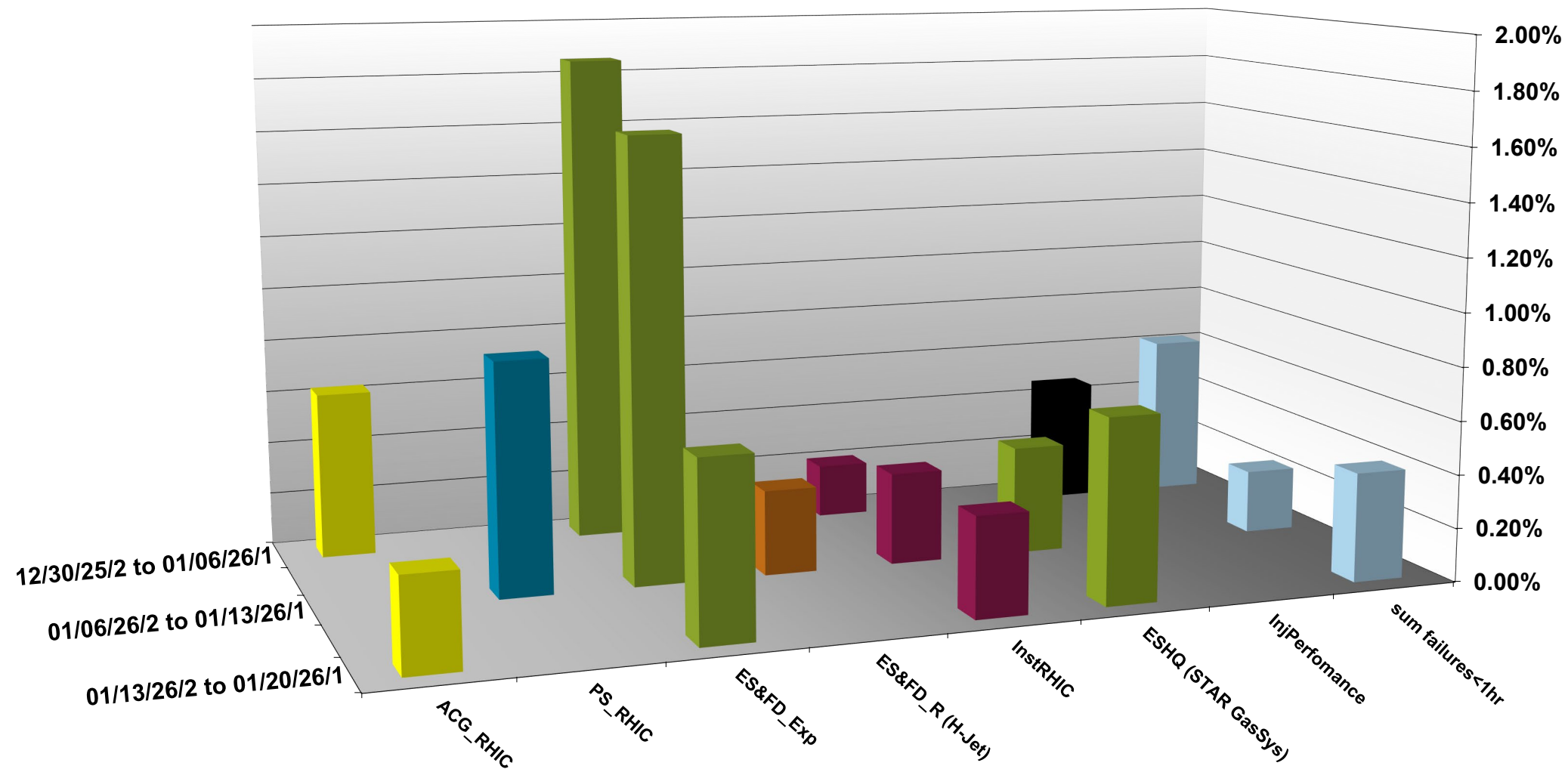


# C-AD ACTIVITY    January 2026



# INTEGRATED FAILURES (GREATER THAN ONE HOUR) BY SYSTEM -- January 2026



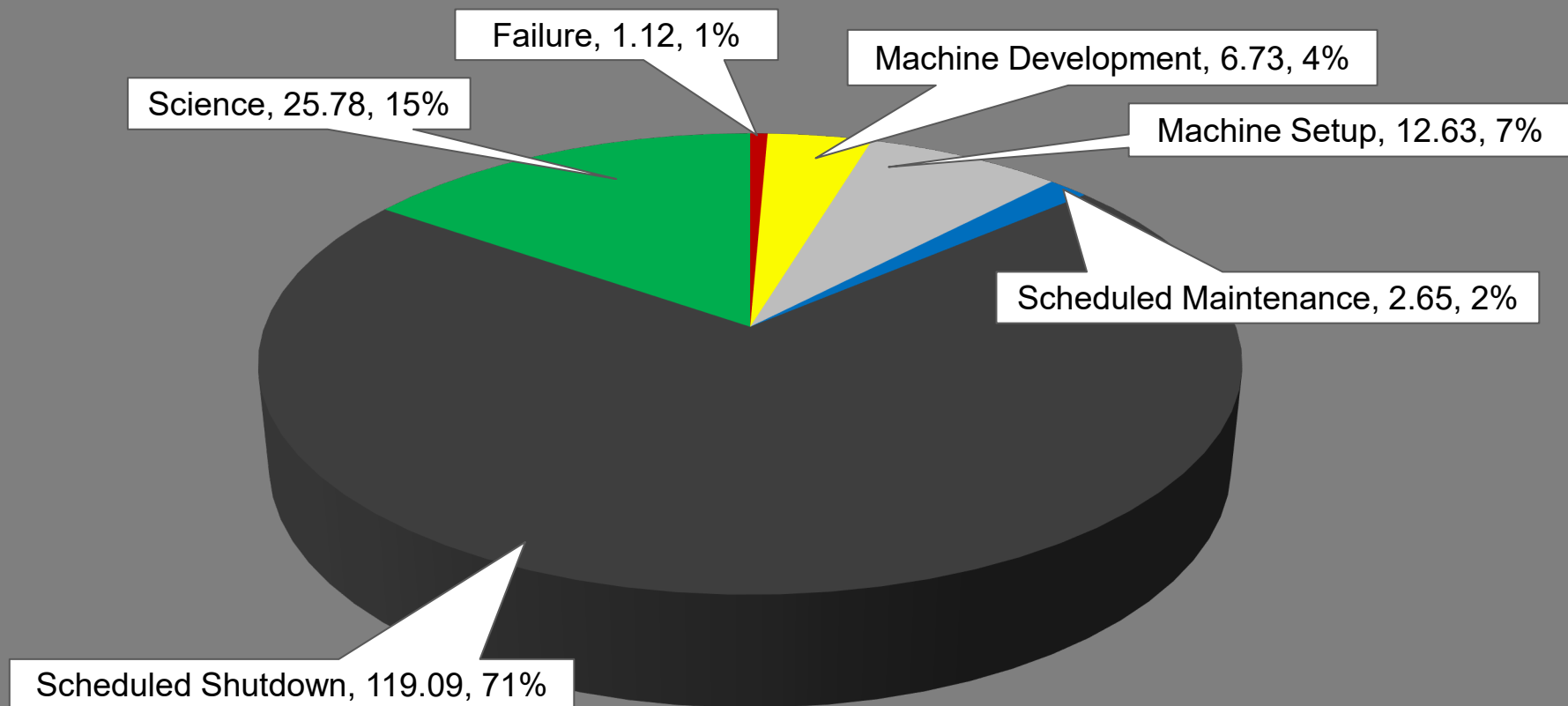
# NSRL activity past weeks: 1/13-20/2026 (as of 0800)

NSRL running continued with various users and setup.

Linac protons, 5 EBIS ions in use (d, Si, Fe, Nb, Ag)

Run 26-A continues, **schedule posted** with users up to **3 April**.

## NSRL Hours



# Notes from Operations

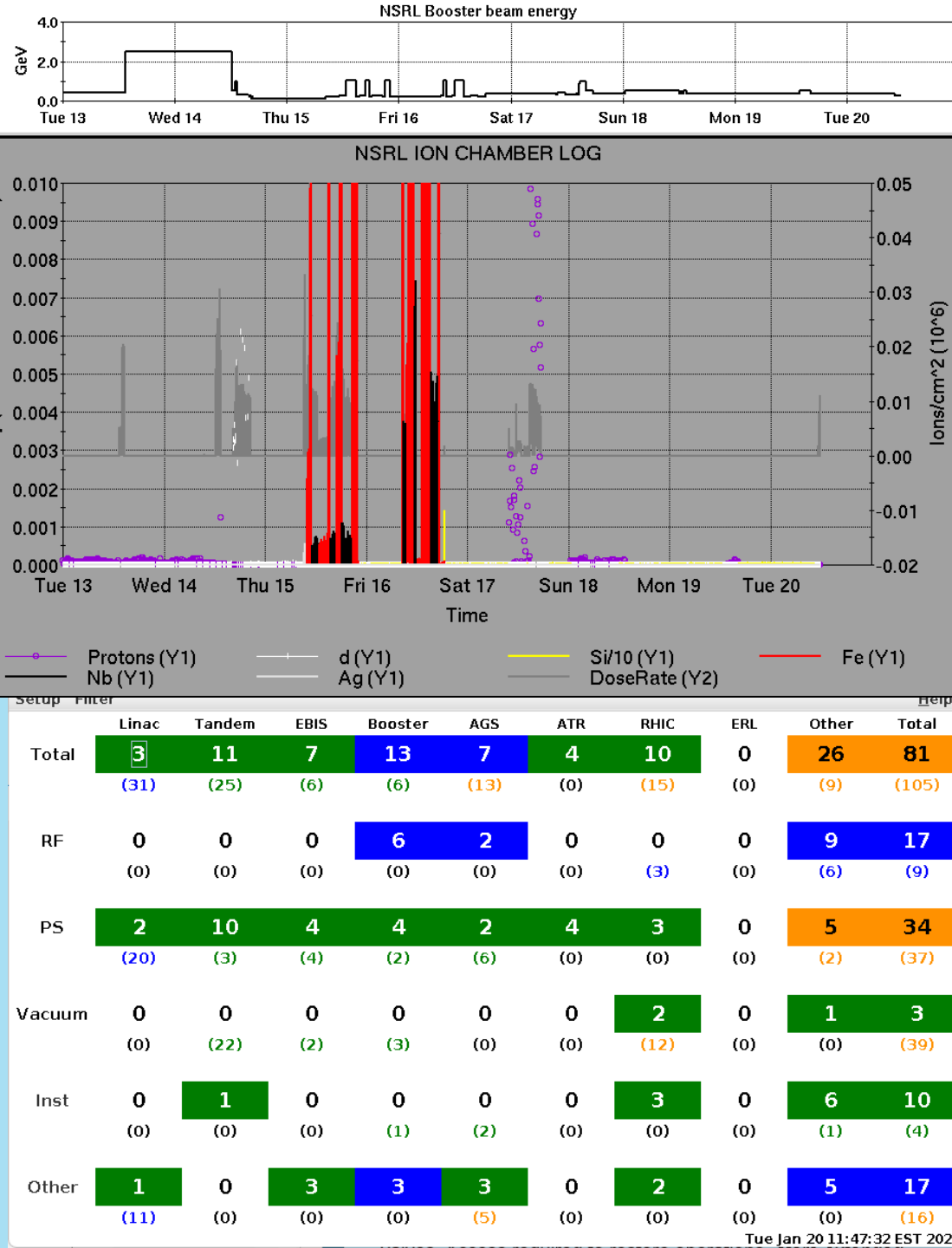
## Notable failures (>1 hr)

- Booster D1 injection PS failure, repairs deferred
- BPM beam abort, multiple Controls resets in sector 6.
- ODH sensor failure in sector 8, access for Fire/Rescue and ACS repairs extended due to ESSHQ ladder issues
- Access for sPHENIX detector protection system issues
- Yellow QLI at park, additional fan fault on QPA.
- Access for sPHENIX detector cooling leak investigation

## Other notes

- AGS MMPS trip, entered transformer yard for repair behind store.
- AGS B1 cold snake quad PS failure, water flow switch repairs behind store
- Booster C1 injection PS failure, undiagnosed
- AGS RF station E trip, PLC repairs
- Other various trips, resets, tuning

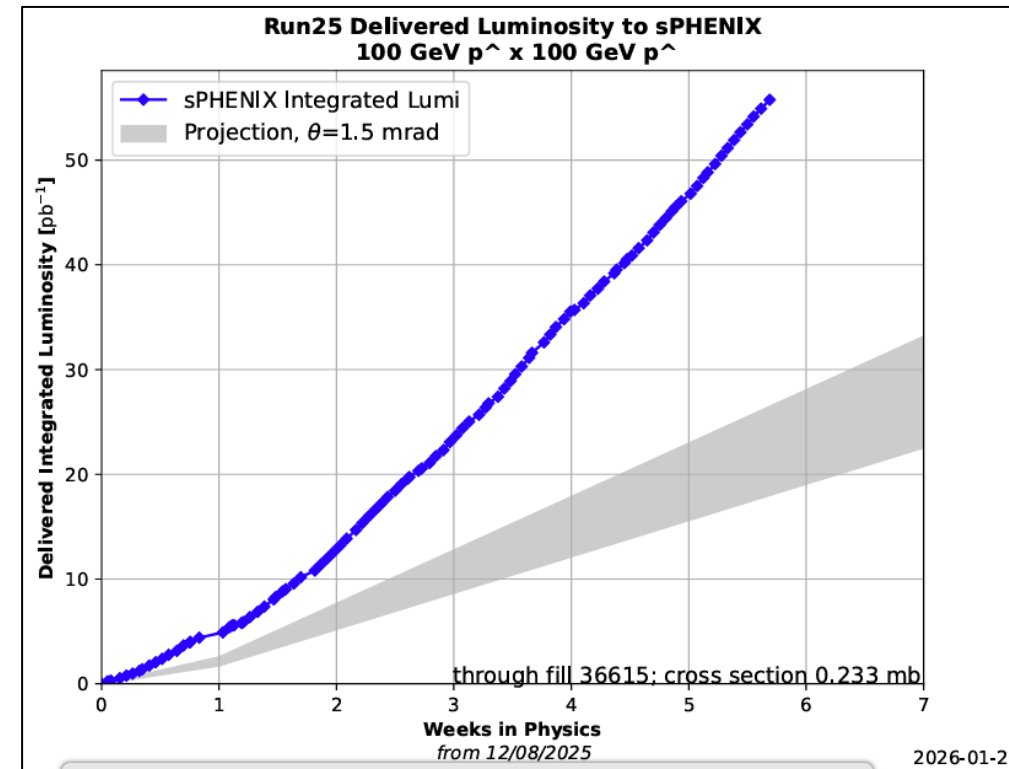
Polarized beam development, Oxygen setup, H<sub>2</sub> and other setup, training behind stores this week



# Reminder from Operations

- MCR beam operations continue

- RHIC switch to Tandem ions (Au) for APEX and STAR FXT
- NSRL shifts scheduled for users & MD, 2 shifts/2 days this week, 5 days next.
  - Protons from Linac; end date TBD.
  - Other ions, molecular beams from EBIS.
- BLIP target production not scheduled until March.
  - Beam from high intensity source in BLIP line anticipated 27 February, pending restart authorization and valid ORC.
- AGS tuning (Tandem O), other studies to continue behind stores as time allows.
- *MCR shift coverage 24/7*



# Availability: RHIC Run-25

