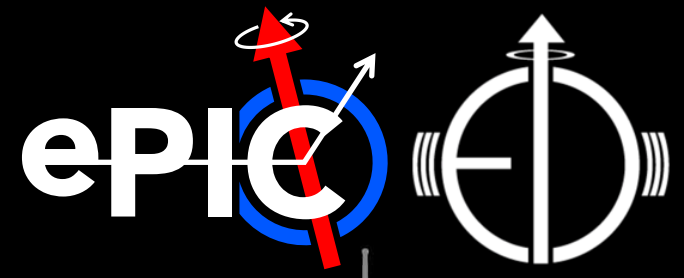




UNIVERSITY OF
BIRMINGHAM

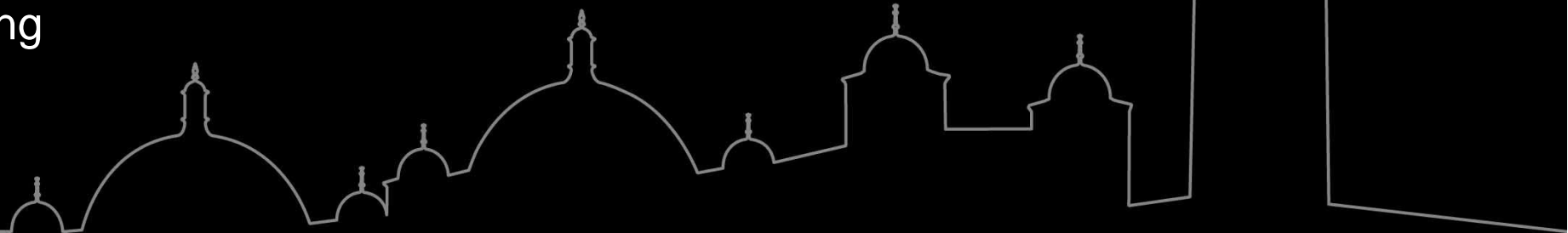


M-FPC to Readout Board (spTAB)

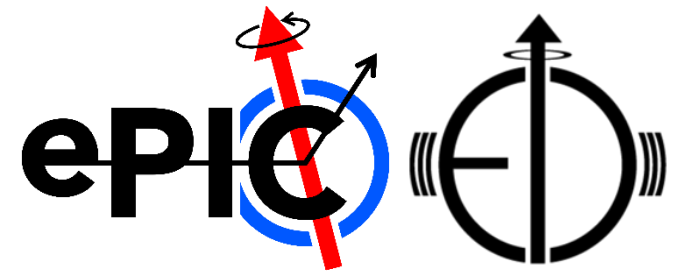
James Glover

OB module: ad-hoc meeting

Mon, 12th May 2025



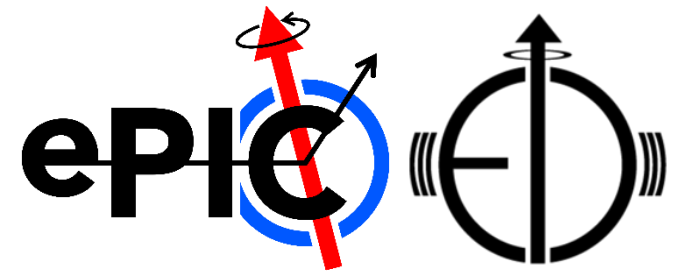
Part update



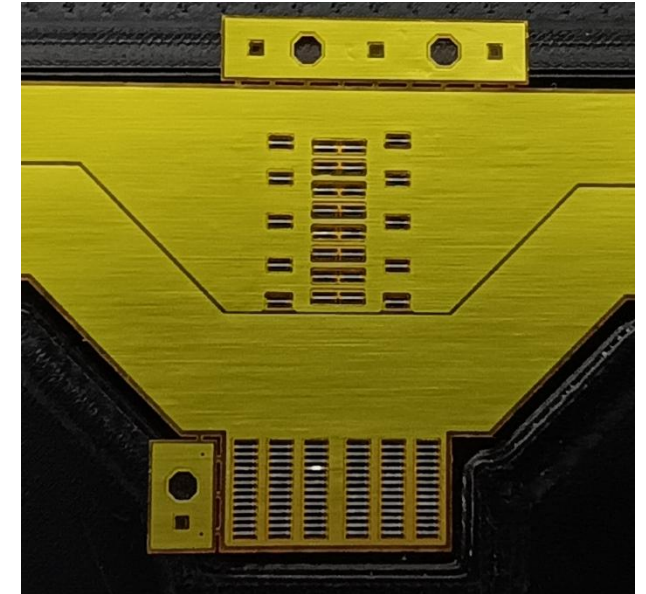
- We have an additional jig from Oxford (thanks)!
 - This version is designed to be James-proof (FPC only fits in the correct orientation).
- We also have the updated PCBs from Andy (thanks)!
 - Now with the the solder resist removed under the FPC to minimise the height different between the aluminium layers of the FPC and the pads of the PCB.



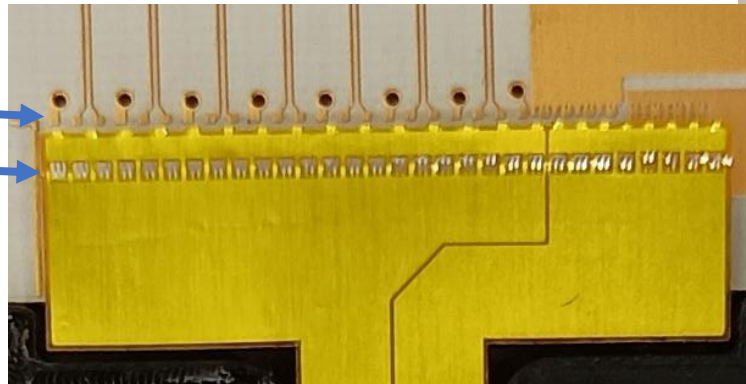
Oxford jig



- Upon inspection, this jig does not have the cut-outs for the B-FPC alignment tabs.
 - Can be solved by cutting off tabs (can only used for FPC for the M-FPC data transmission tests).
- PCB (for the wider, Power/Data IN side) sits too far out and bond pads do not align with the FPC's traces.



Bond pads
FPC traces



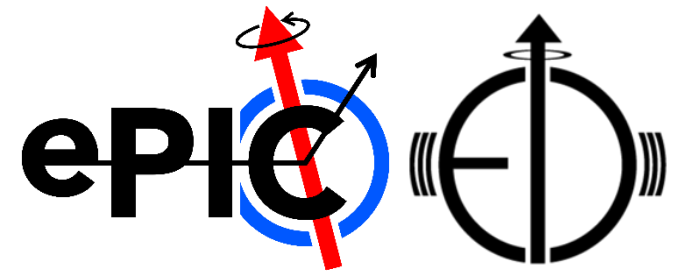
UNIVERSITY OF
BIRMINGHAM

12 May 2025

OB module: ad-hoc meeting

3

Summary



The Oxford jig (in its current form) is not suitable.

- We are looking to modify the designs.
- Fallback would be to return to the previous Birmingham jig.

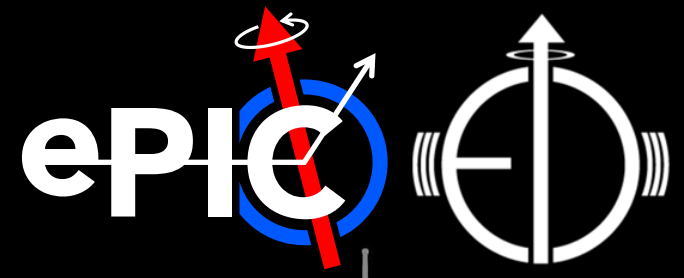
Considerations for mounting and bond the 2nd version of the M-FPC is ongoing. Considerations between:

- Bonding while FPC is held by a weight only (and holding with a bead of glue, around edges, after bonding).
- Holding FPC with glue dots for bonding (and adding more glue afterwards).



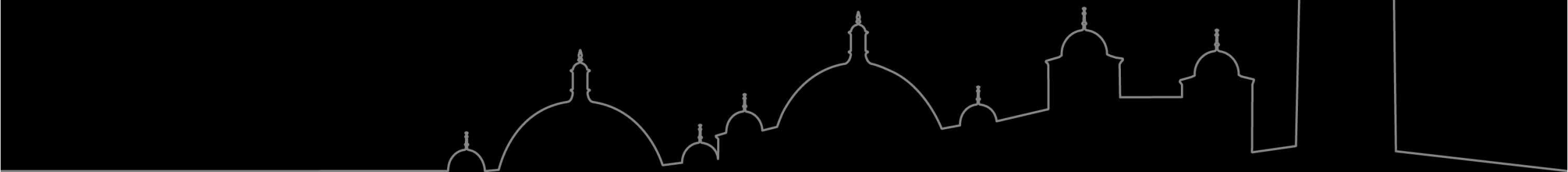


UNIVERSITY OF
BIRMINGHAM



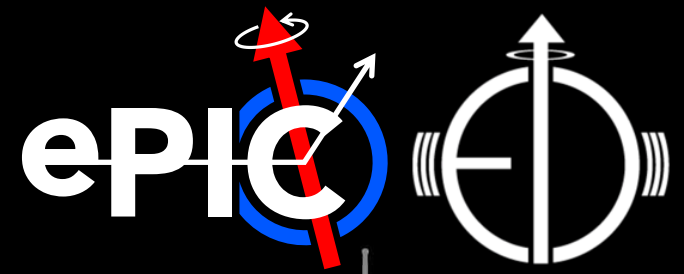
Thank you very much!

Any questions?





UNIVERSITY OF
BIRMINGHAM



Additional (support) slides

