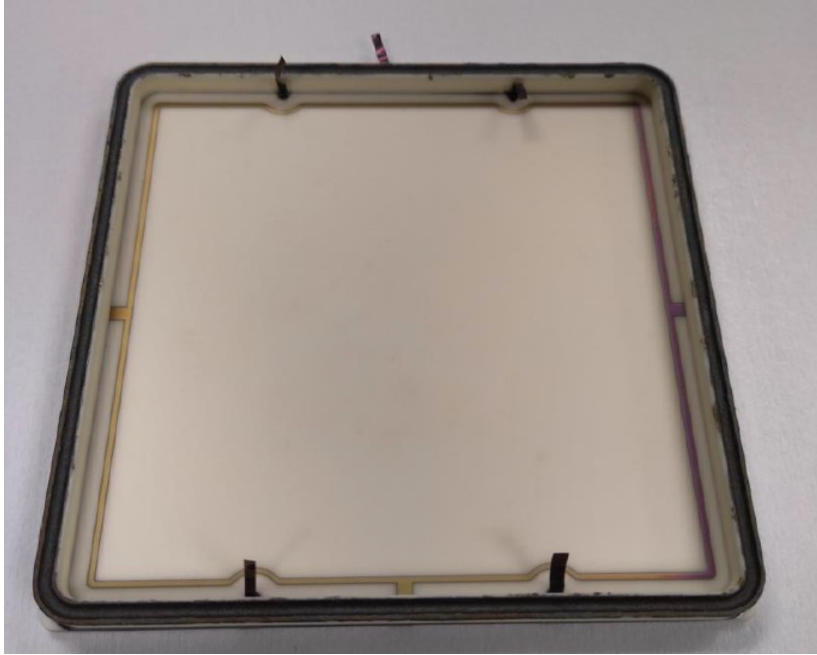
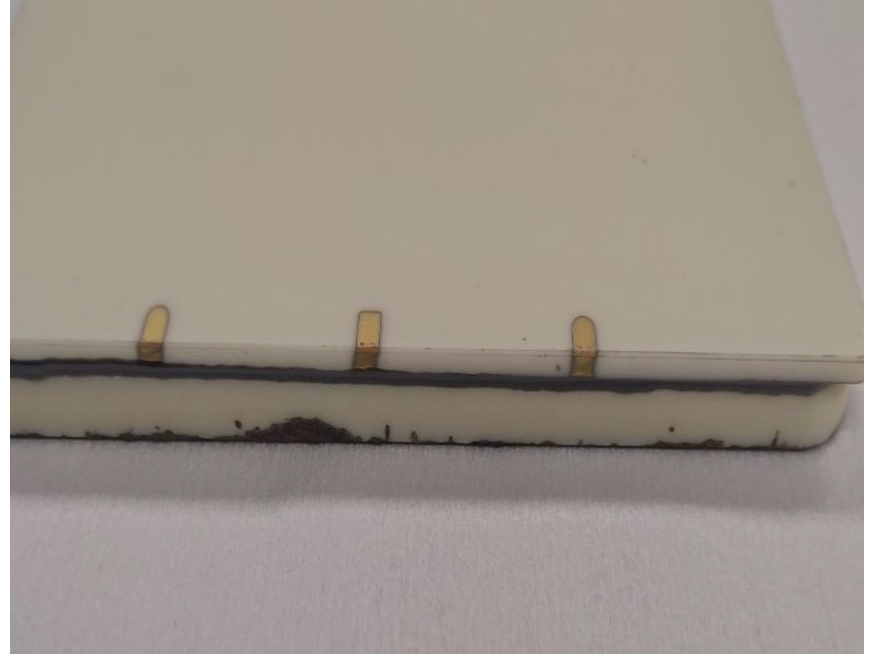


CC-HRPPDs: edge wrap metallization

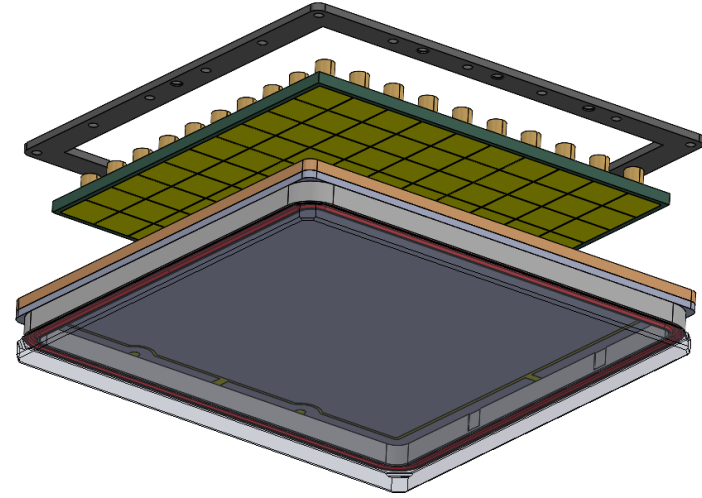
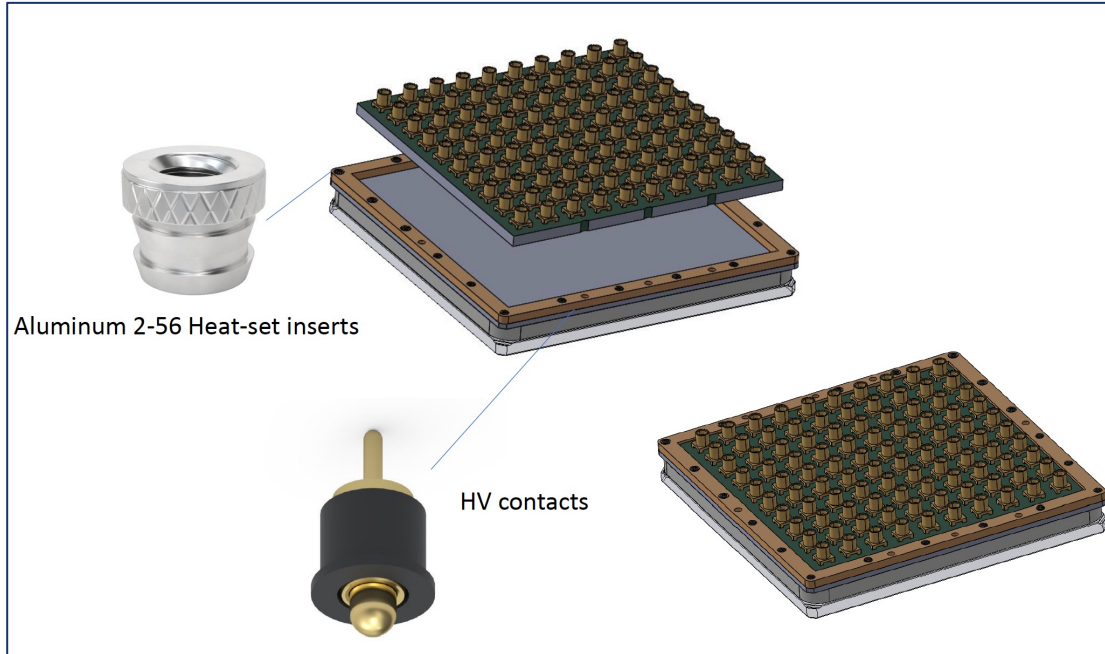


LTA inner side

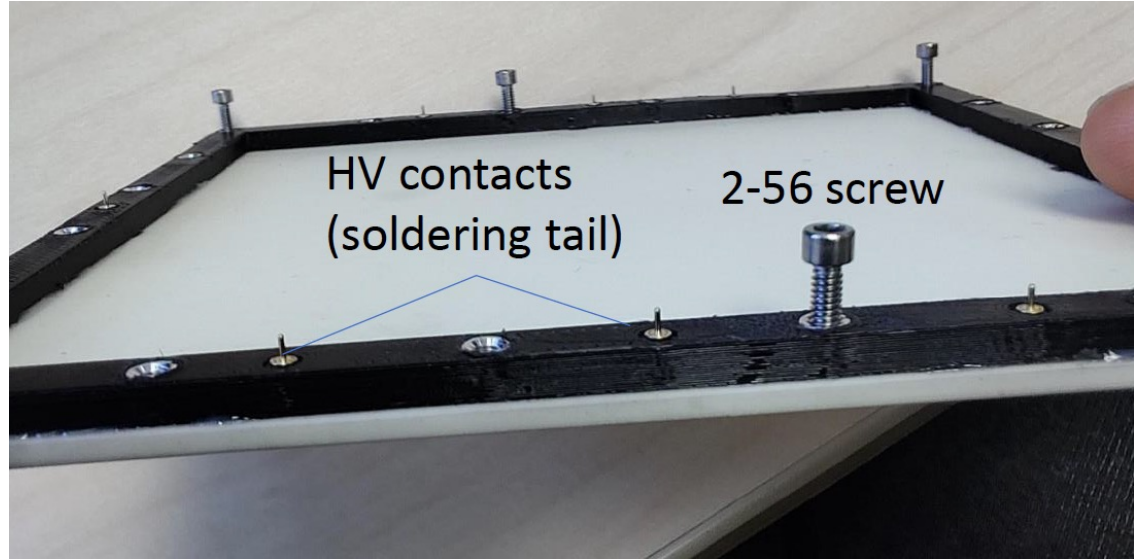
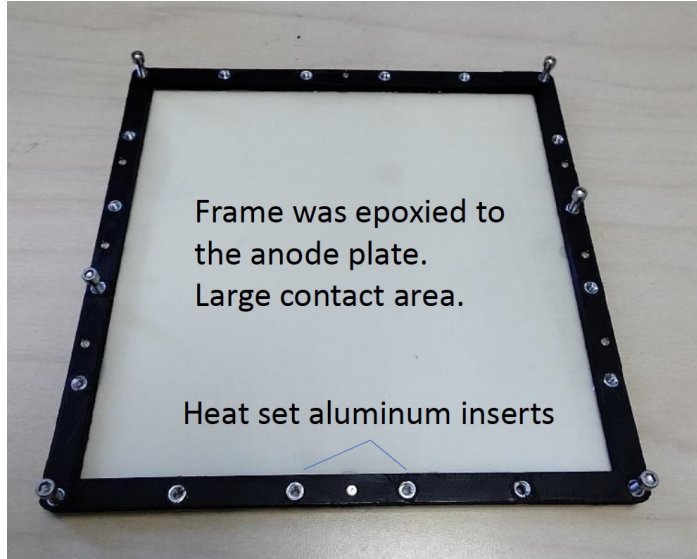


Edge contacts on the outer side

CC-HRPPDs: assembly CAD model

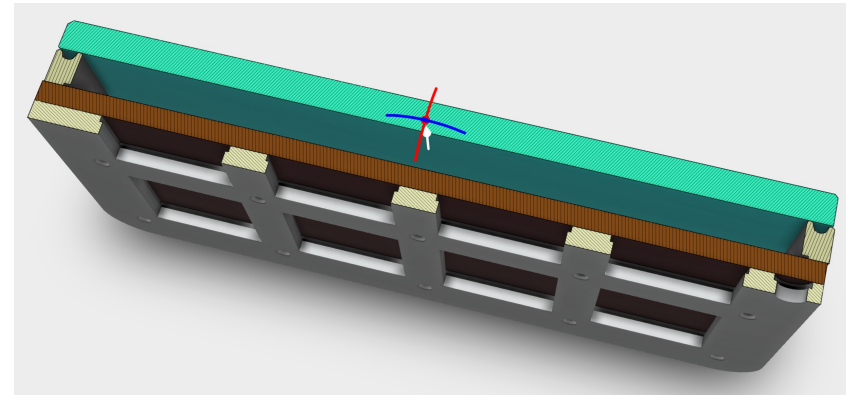
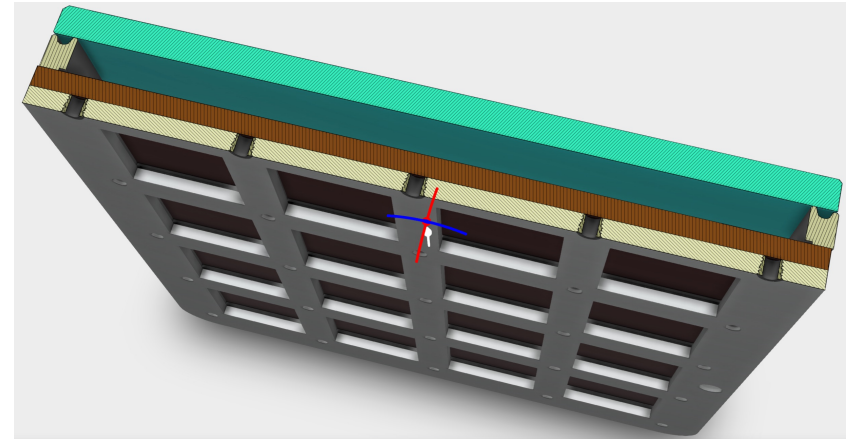
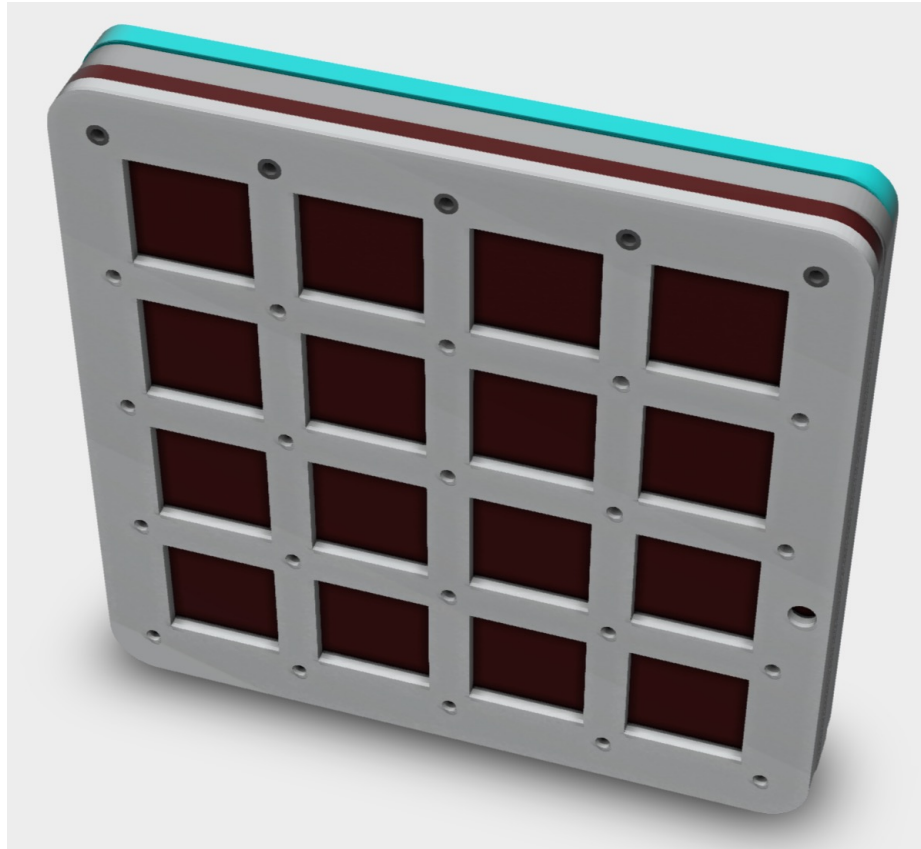


CC-HRPPDs: practical implementation



- 3D printed part is glued onto the ceramic base plate (large area of contact -> more mechanically robust)
- Threaded fixtures can be of any type (here: heat set, female threaded)

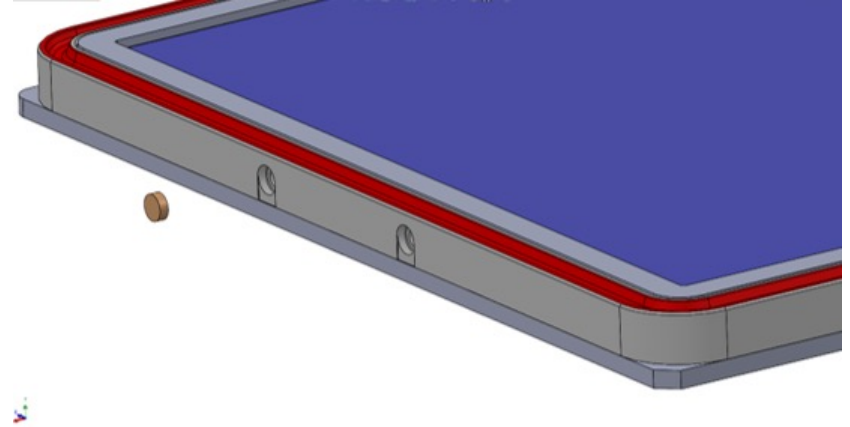
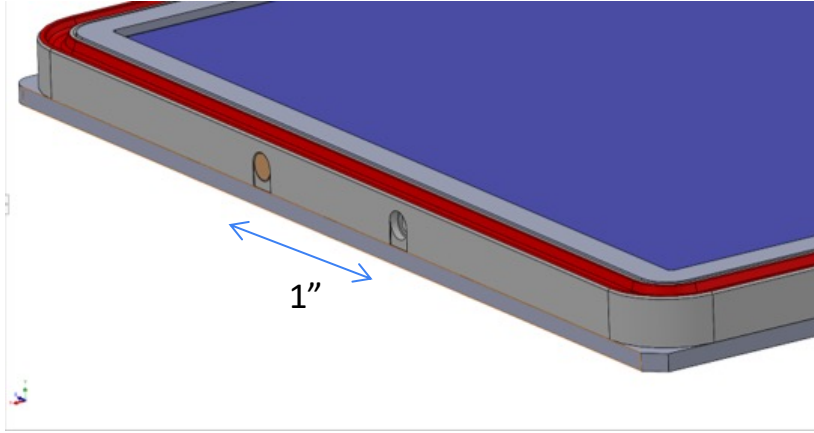
Something similar for DC-coupled HRPPDs?



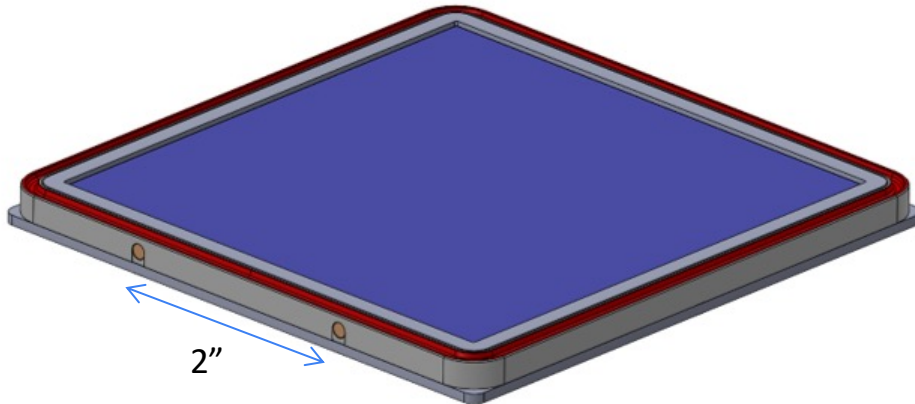
Assume ~3mm thick compression interposers by Neoconix

HV connection in side walls (Cu-Mo plugs)?

One side



The other side



Recess for HV strip contact

