



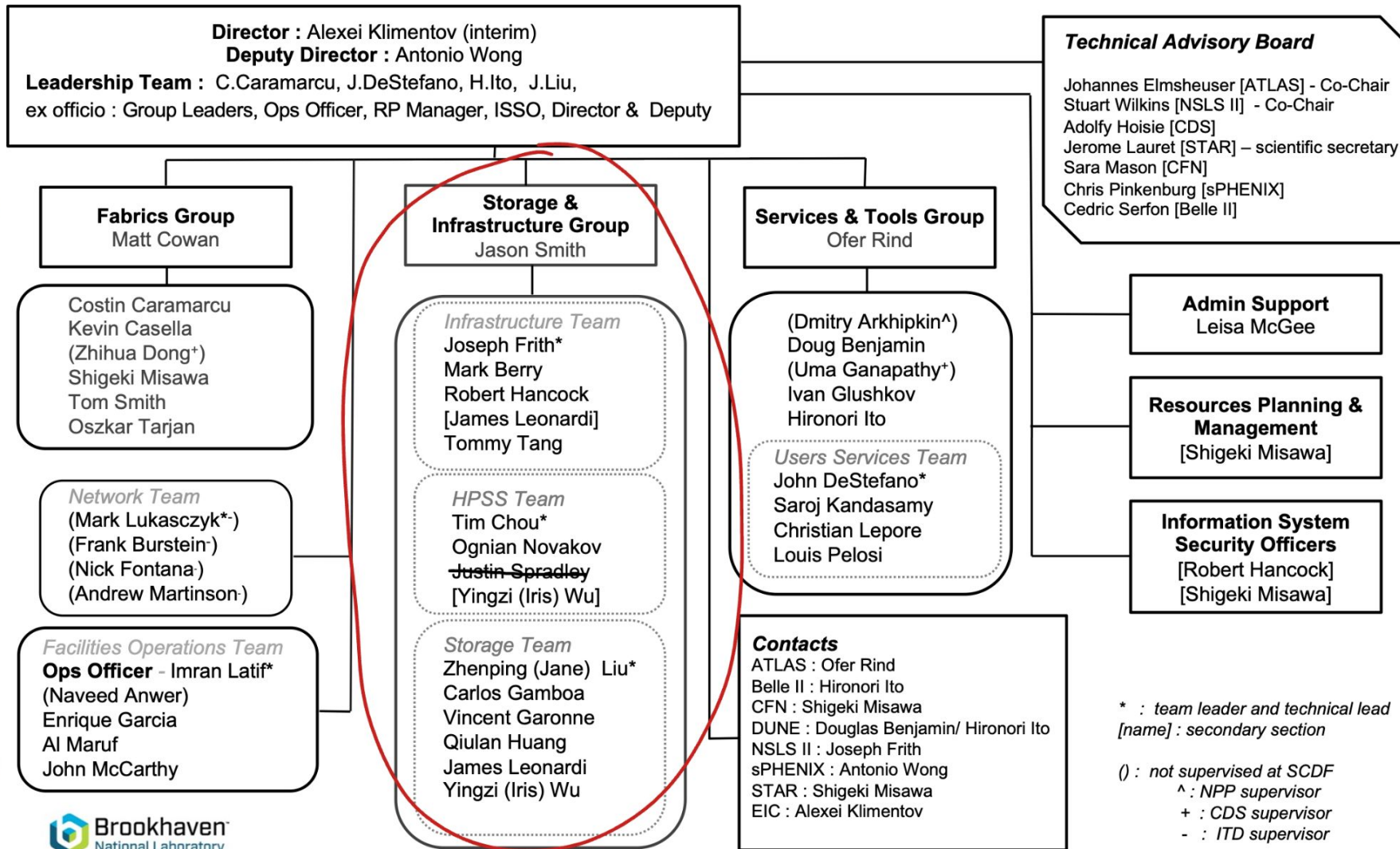
Storage & Infrastructure Group

SCDF Stakeholders and Users Technical Meeting
June 12, 2025

Jason Smith (Group Leader)



Storage & Infrastructure Group



Infrastructure Team

- Joe Frith - Technical Lead, NSLS2 PoC, GPFS, NFS, RHEV/OpenShift , Globus & various services
- Mark Berry - GPFS, NFS, RHEV/OpenShift & various services
- Robert Hancock - ISSO, OpenShift, XRootD, COManage & IAA, Storage hardware support, ZFS & many more things...
- James Leonardi - Config Mgmt. (Puppet, Foreman), Gitea, etc.
- Tommy Tang - OpenShift, Storage hardware support, ZFS, Globus, etc.

Infrastructure Services

- RHEV/OpenShift for virtualization & container management
 - RHEV (to be retired ~ 1 year) - 3 Hypervisors hosting ~90 VMs
 - OpenShift: 13 Workers hosting ~480 VMS & 39 containers (early testing)
- Central Storage
 - NFS (home dirs, RHEV/OpenShift, CVMFS, NSLS2, OKD)
 - GPFS (3.6PB STAR, 3.9PB PHENIX, 1.1PB USATLAS, 2.4PB HPC)
 - XRootD (STAR): 20PB on 18 servers
 - AFS (RHIC & ATLAS) *to be retired - hopefully
- Central Config Management
 - Puppet, Foreman, Gitea, Cobbler (to be replaced), GLPI
- Various Services
 - IPA (Idap, kerberos), syslog, dns, ntp, ssh, sftp, RT, Globus, Satellite RACF Org, etc...

Storage Team

- HPSS
 - Tim Chou - Technical Lead, HPSS, TSM
 - Ognian Novakov - HPSS, Libraries & Robots
 - Iris Wu - HPSS, Software & Monitoring
- Storage (distributed)
 - Jane Liu - Technical Lead, Lustre, Storage Monitoring
 - Carlos Gamboa - USATLAS Tier1 Storage Manager, dCache, Storage Monitoring & Performance, DB Management,
 - Vincent Garonne - dCache, Storage Monitoring
 - Qiulan Huang - dCache, Lustre, ARLAS Analysis Facility, Storage Monitoring
 - James Leonardi - dCache
 - Iris Wu - dCache, Lustre

Storage Services

- HPSS (High Performance Storage System)
 - Tape libraries, robots, data movers, gateways, etc...
 - Over 389PB of data in 16 libraries on more than 100k tapes
- TSM (Tivoli Storage Manager): tape backup system
- Lustre
 - sPHENIX: 83PB on 93 servers
 - NSLS2: 13PB on 24 servers
 - EIC/STAR: 7.6PB on 8 servers
 - CFN: 1.8PB on 2 servers
 - LQCD: 217TB on 3 servers
- dCache
 - ATLAS: 47.7PB data on disk (57 servers) & 104PB tape
 - BelleII: 3.7PB data on disk (4 servers) & 2.7PB tape
 - PHENIX: 7.8PB data on disk (13 servers) & 23PB tape
 - Dune: 1.3PB data on disk (4 servers)
 - Integration/Test: 700TB