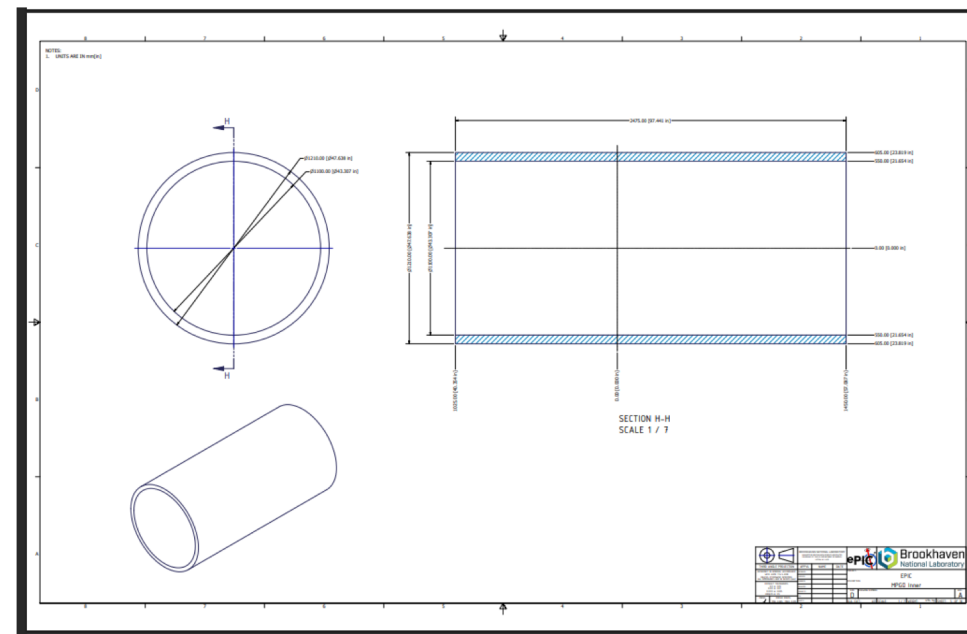


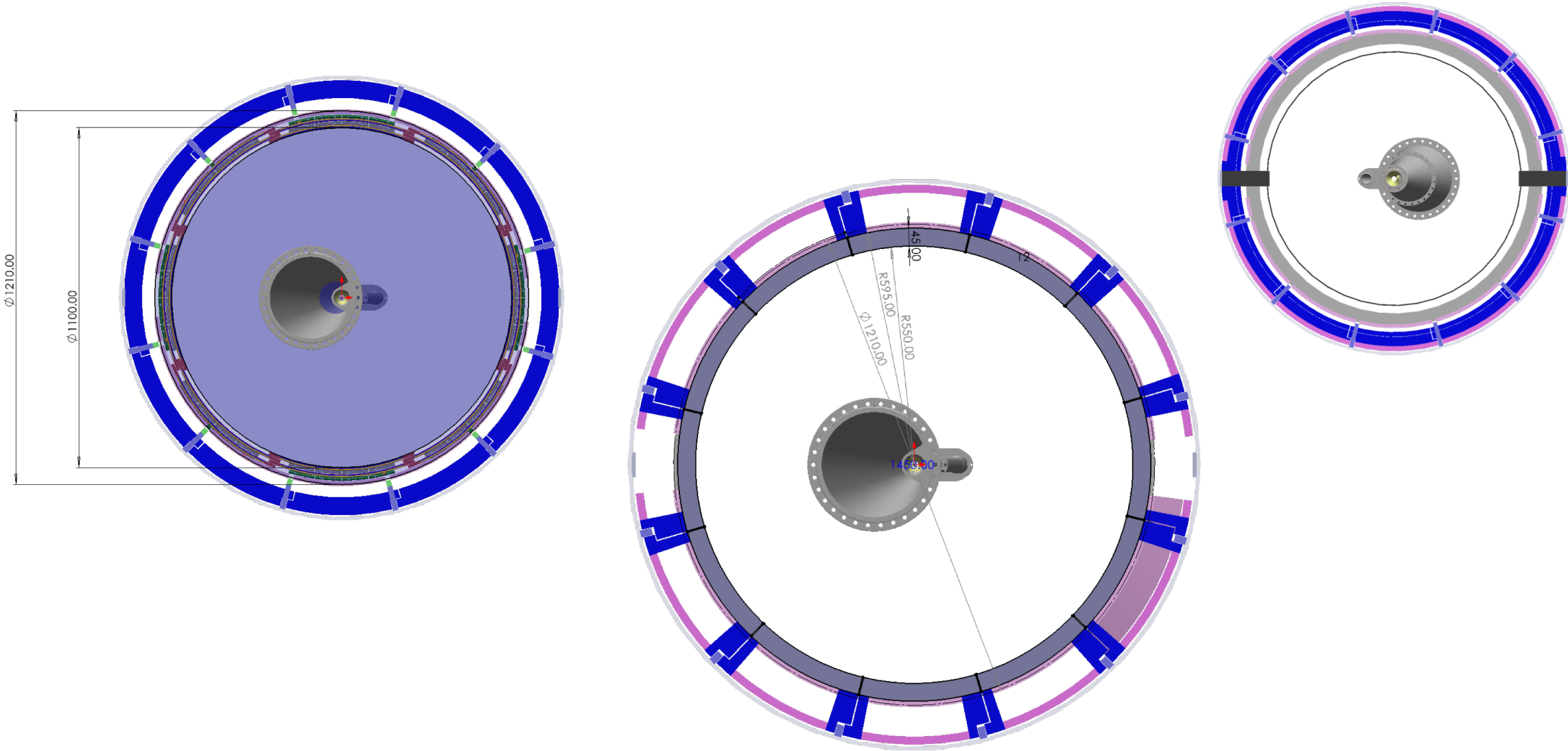
24 June GST concept

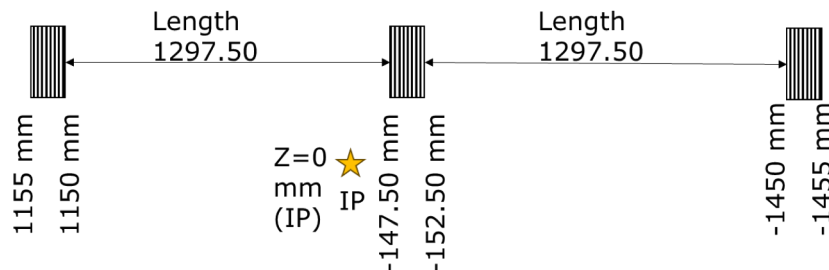
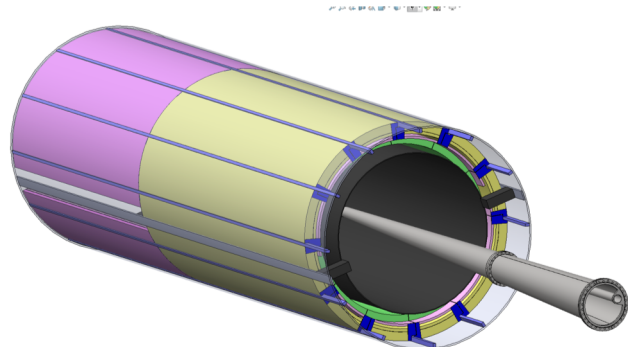
For TOF meeting

- ⬡ The TOF and Cymbal will be segmented in 12 sectors along the r-phi plane inside the GST.
- ⬡ This will enable installation and removal of the TOF + Cymbal sectors
- ⬡ This is a second degree envelope model with interfaces for both the AC-LGAD barrel* and the Cymbal barrel mounts as positioned in the 12 sectors.
- ⬡ This design allows for complete coverage in r-phi plane
- ⬡ There will be some split / loss of coverage in the z which is unavoidable. (originally was 5mm – still on that scale)



From Dan's envelope model March_2025

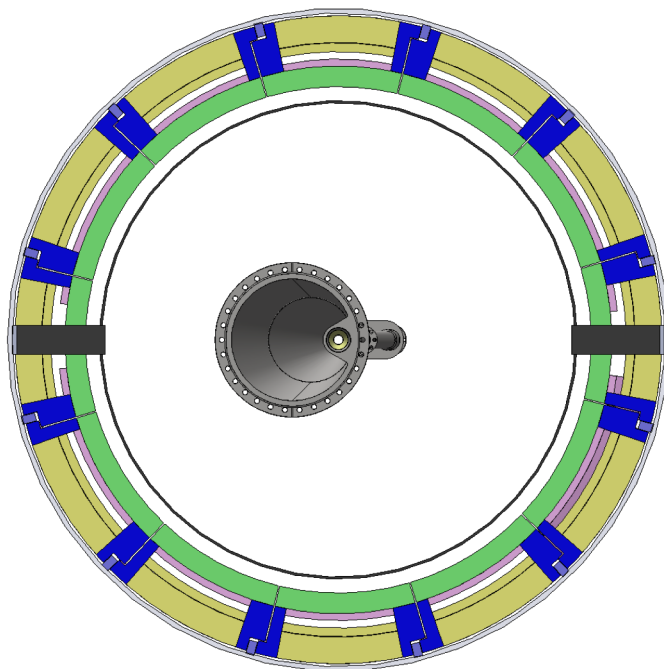
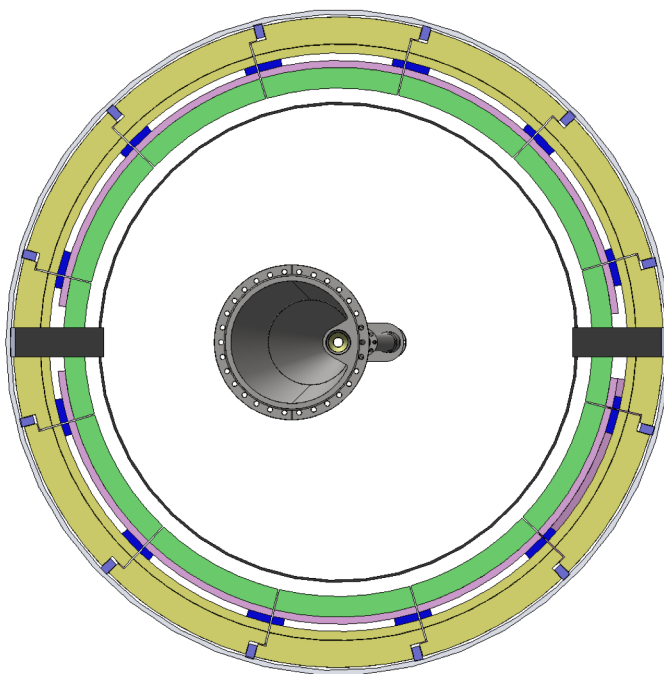




No engagement rings but otherwise the length and segmentation remains same

TOF and Cymbal will be installed as combined sectors (12 sectors total) and will also share the trays for the services.

The dimensions of the TOF and split on the staves (along z) remains unchanged.



Dark Pink if TOF service space

