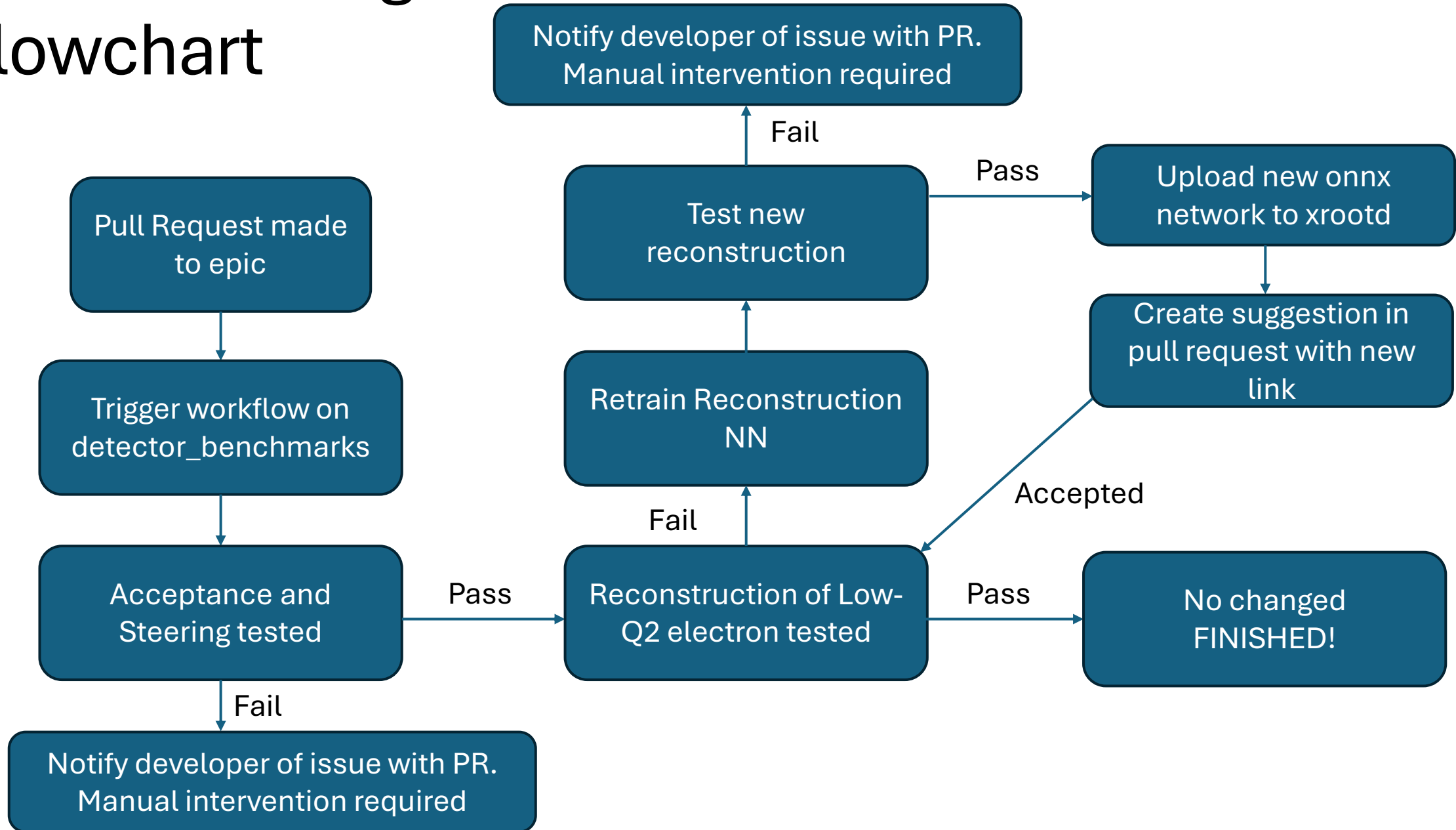


Low-Q2 reconstruction benchmark

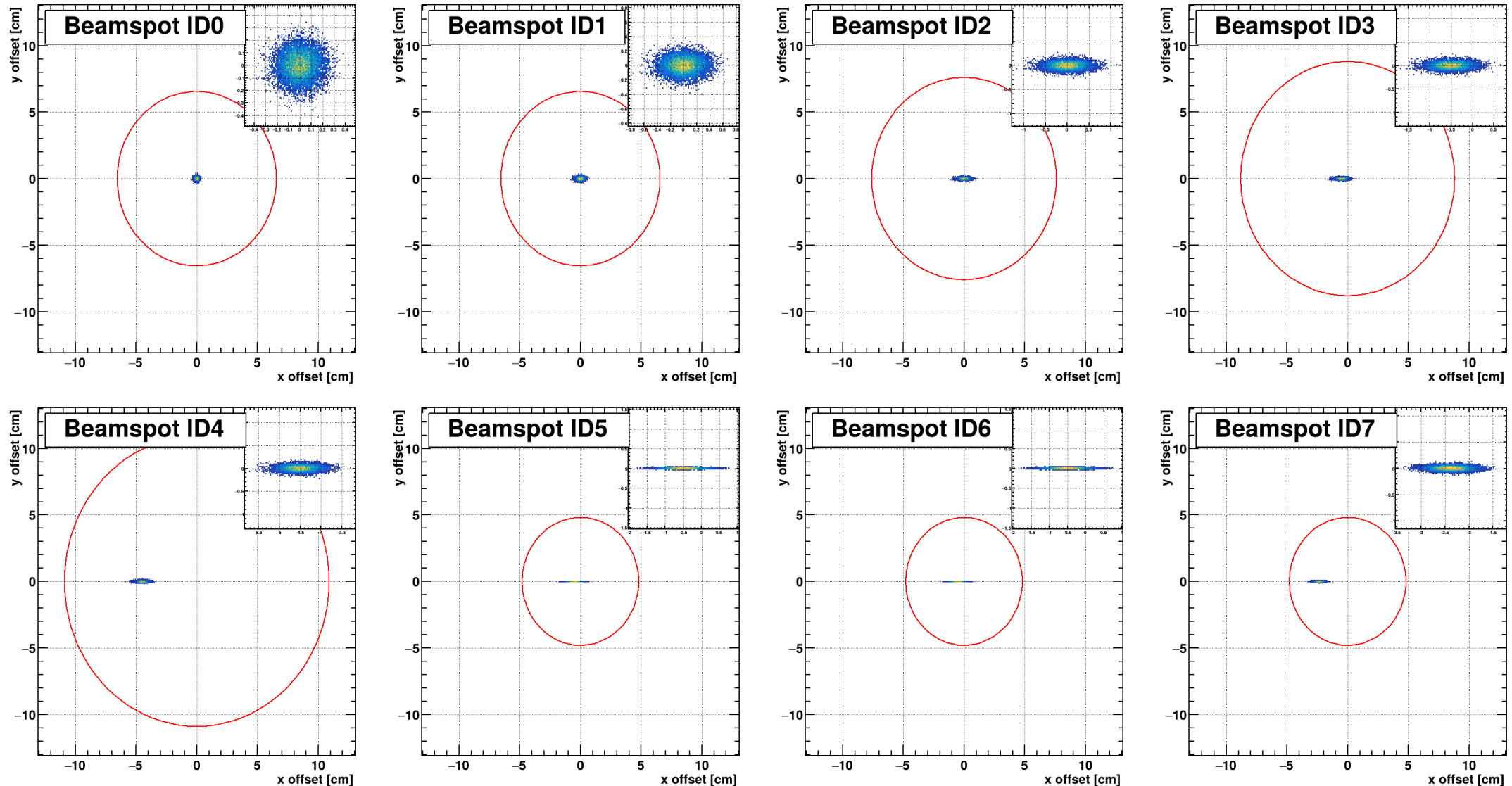
Testing, retraining and updating onnx network.

Benchmarking flowchart



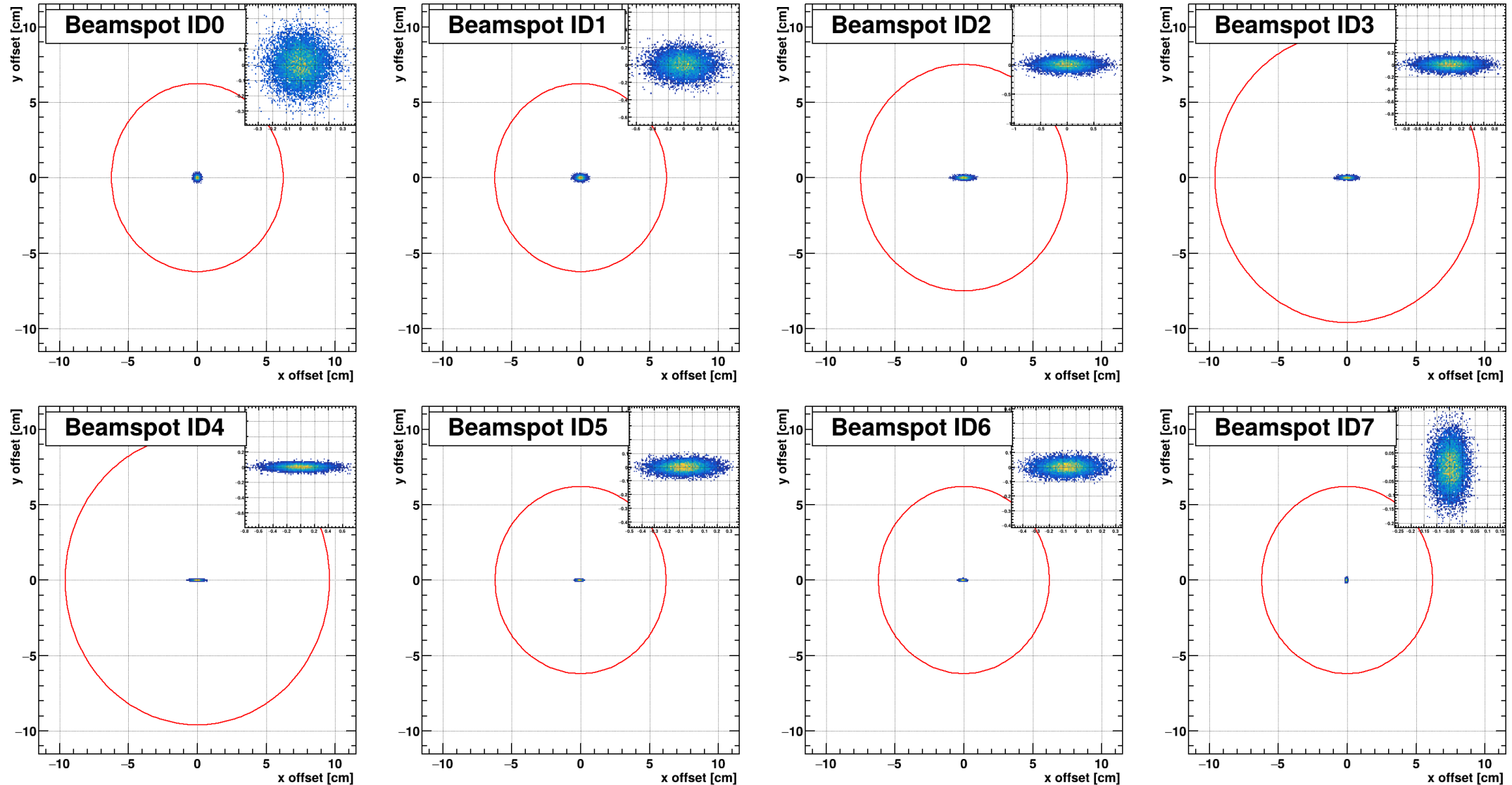
Far Backward Steering and Acceptance

Current Beamline: Beamspot off center of Q3eR (ID5)



Far Backward Steering and Acceptance

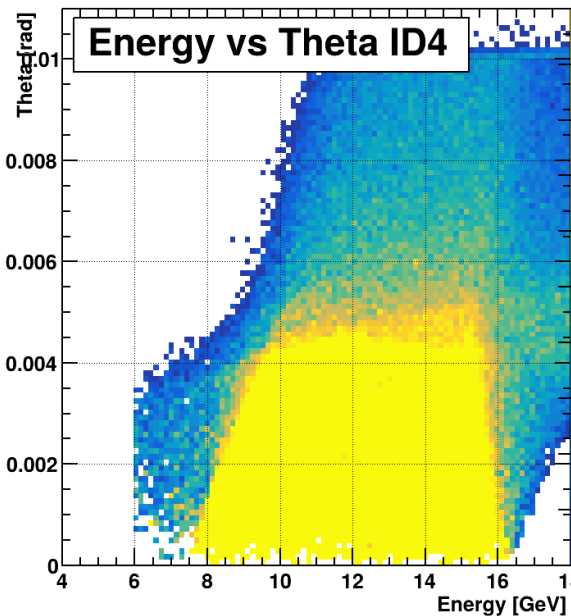
Updated Beamline: Nicely centered beam



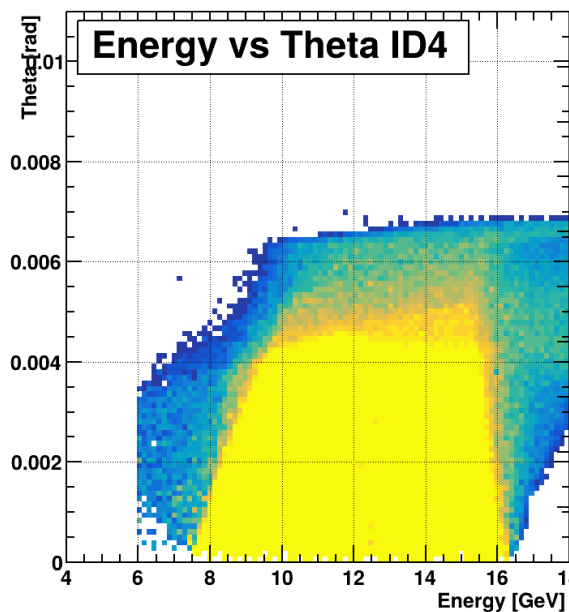
Far Backward Steering and Acceptance

	Radius	End	Opening
Original	47.60 mm	4560.17 mm	10.4 mrad
Current	31 mm	4544.49 mm	6.8 mrad

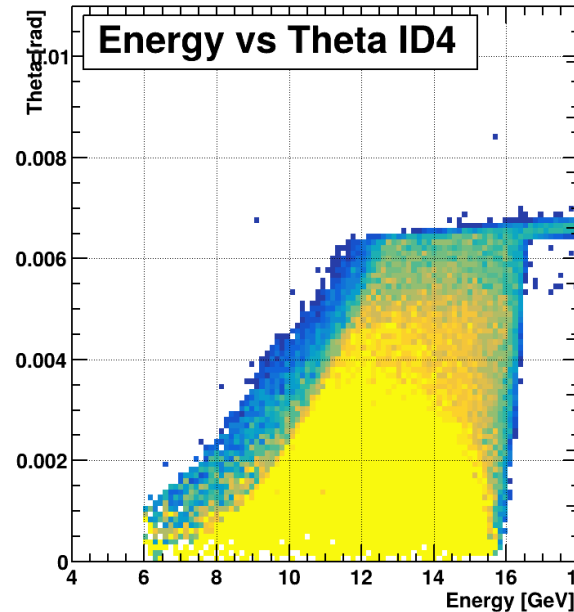
Without benchmark in place acceptance change from smaller central beampipe wasn't identified at the time (Jan 2025)



Old central beampipe



Current – cold B2eR



6.3 – warm B2eR

Real 6.3 – smaller diameter

Far Backward Steering and Acceptance

	Radius	End	Opening
Original	47.60 mm	4560.17 mm	10.4 mrad
Current	31 mm	4544.49 mm	6.8 mrad

Without benchmark in place acceptance change from smaller central beampipe wasn't identified at the time (Jan 2025)

