

**From:** Wimmer, Roland [rwimmer@bnl.gov](mailto:rwimmer@bnl.gov)

**Subject:** bEMCAL Installation meeting Questions

**Date:** August 21, 2025 at 13:18

**To:** Joosten, Sylvester Johannes [sjoosten@anl.gov](mailto:sjoosten@anl.gov), Bailey, Kevin G. [kevin\\_bailey@anl.gov](mailto:kevin_bailey@anl.gov), Tom O'Connor [toconnor@anl.gov](mailto:toconnor@anl.gov)

**Cc:** zisis.papandreou@uregina.ca, Bazilevsky, Alexander [shura@bnl.gov](mailto:shura@bnl.gov), Sharma, Rahul [rsharma@bnl.gov](mailto:rsharma@bnl.gov), Cacace, Daniel [dcacace@bnl.gov](mailto:dcacace@bnl.gov), Aschenauer, Elke [elke@bnl.gov](mailto:elke@bnl.gov)

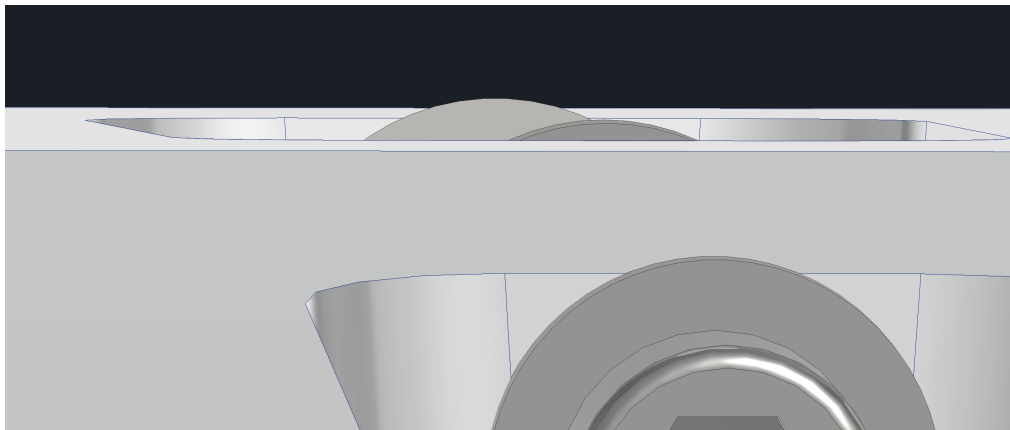
Hi All,

We had a short meeting today amongst ourselves to talk about the BIC support and install. We came up with a list of questions / concerns that we would like to discuss tomorrow and we wanted to share them ahead of time.

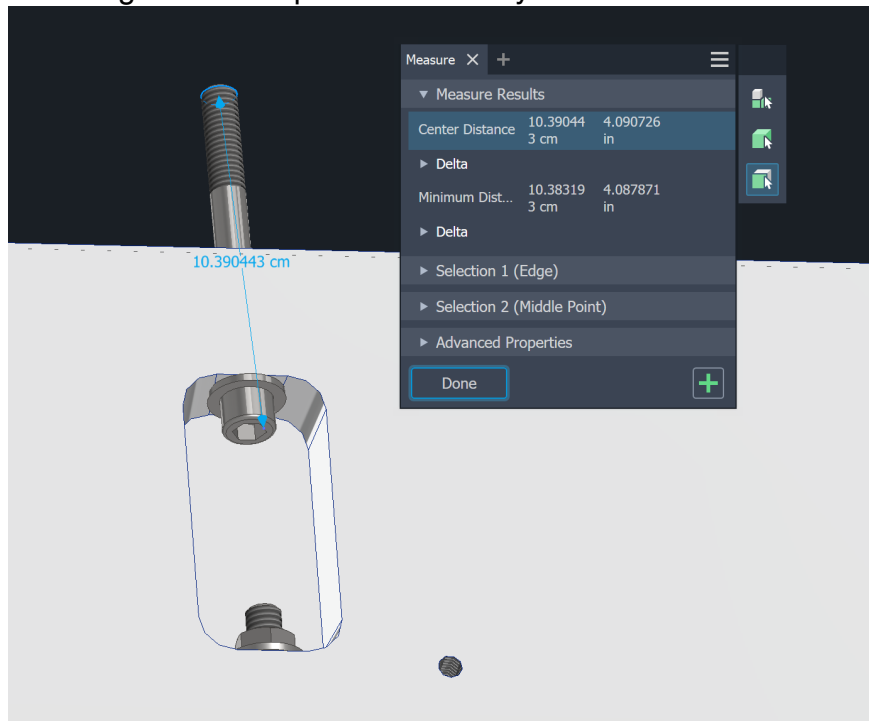
- How do you plan on moving / lifting the sectors? We have assumed that the threaded inserts on the back will be used with some other tooling for lifting, is this correct?
  - Is this lifting method compatible with installing the sectors next to one another?
- Has analysis been done on the barrel EMCAL to confirm that it is entirely self-supporting?
- What are the additional tapped holes for?



- We would like to add more of the 1/2" tapped holes along the length of the detector in a similar pattern to what already exists. They will be used to attach the support structure to the emcal. IS there any issues or concerns with this? Also can they be made 5/8"?
- Can the pockets be made deeper such that the washers don't stick proud of the face?



- While looking at the model today we noticed that the bolts that connect the sectors were longer than the pockets that they have to fit into.



Thanks,  
Roland

