

---

# Offline QA

---

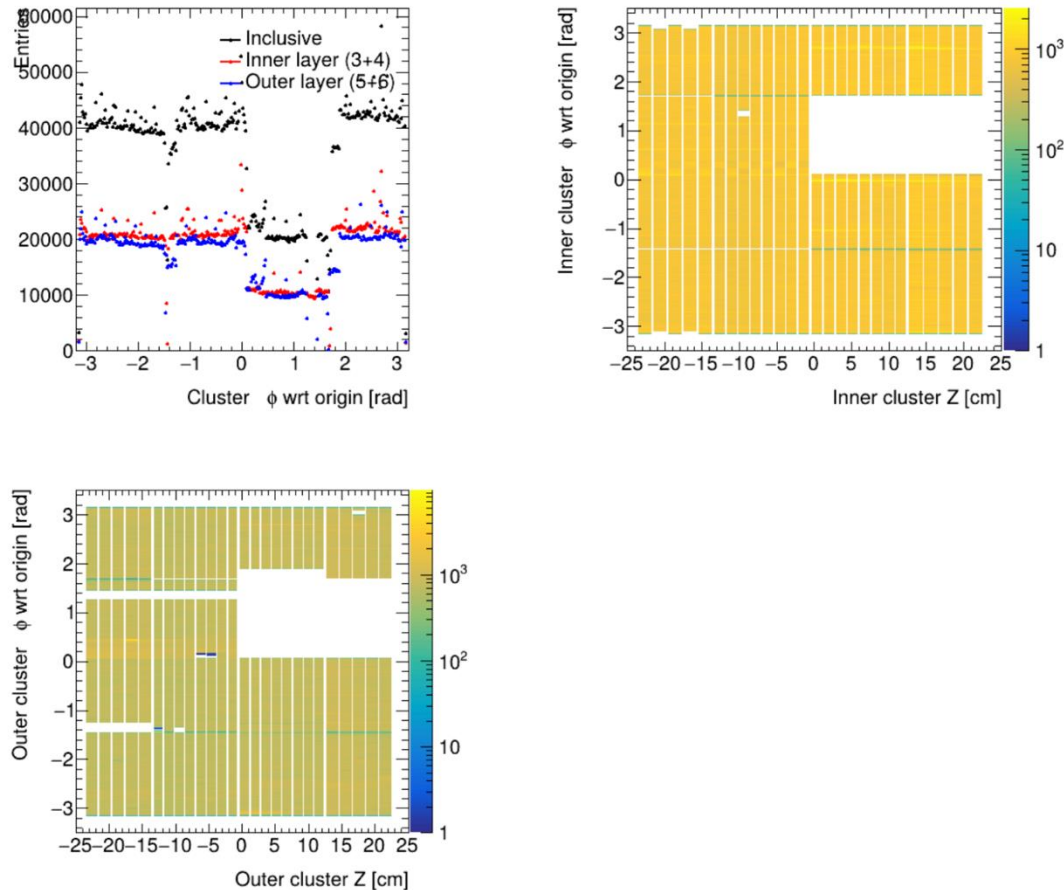
Yuko Sekiguchi  
RIKEN

# Large acceptance missing in cluster distribution

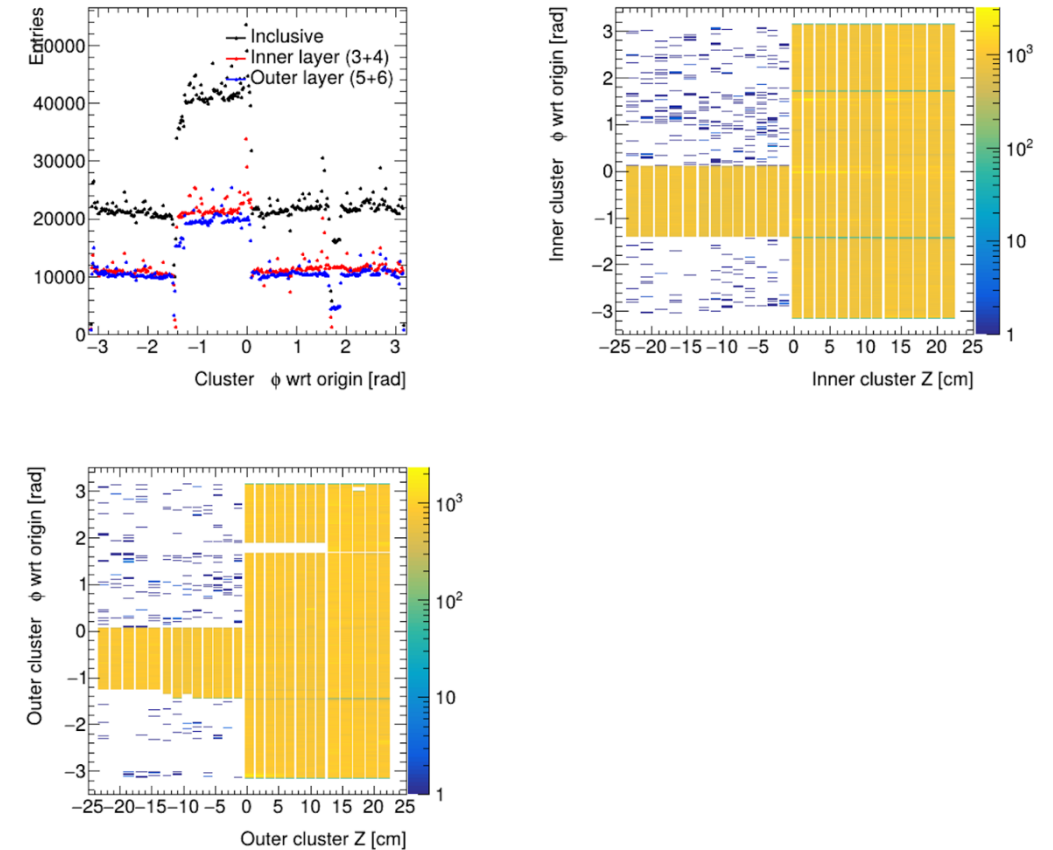
2

- Two recent runs with large acceptance losses were reported by the offline shifter.

INTTQA\_intt Info Run 75449, build new newcdbtag v001/DST



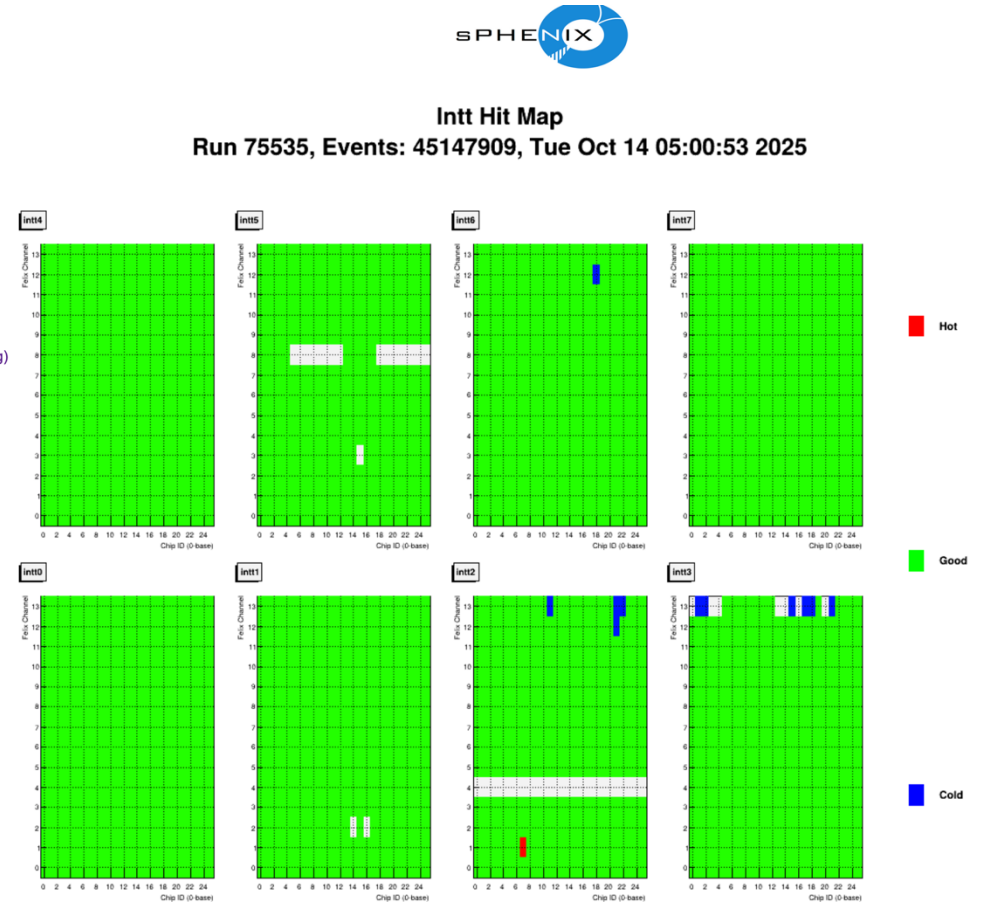
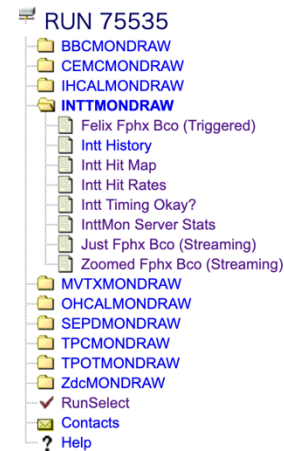
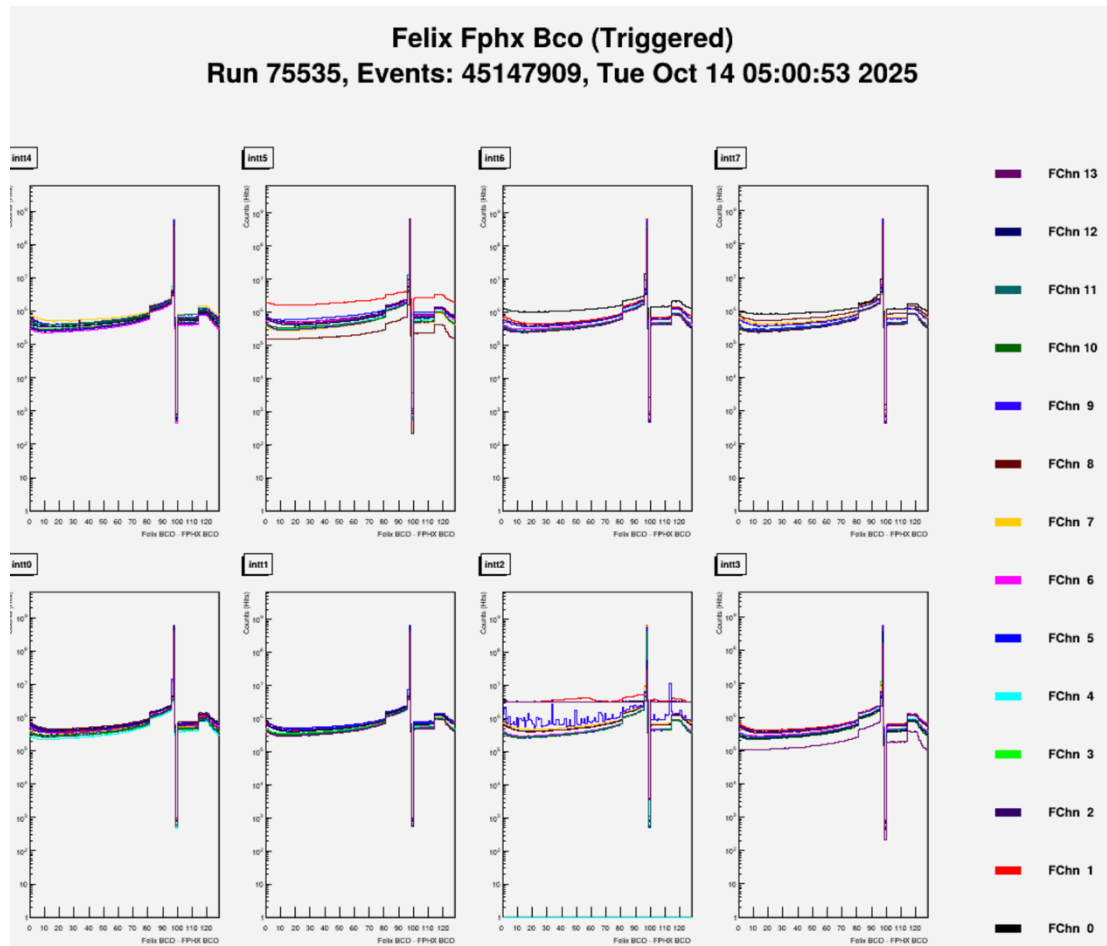
INTTQA\_intt Info Run 75535, build new newcdbtag v001/DST



# Online monitor

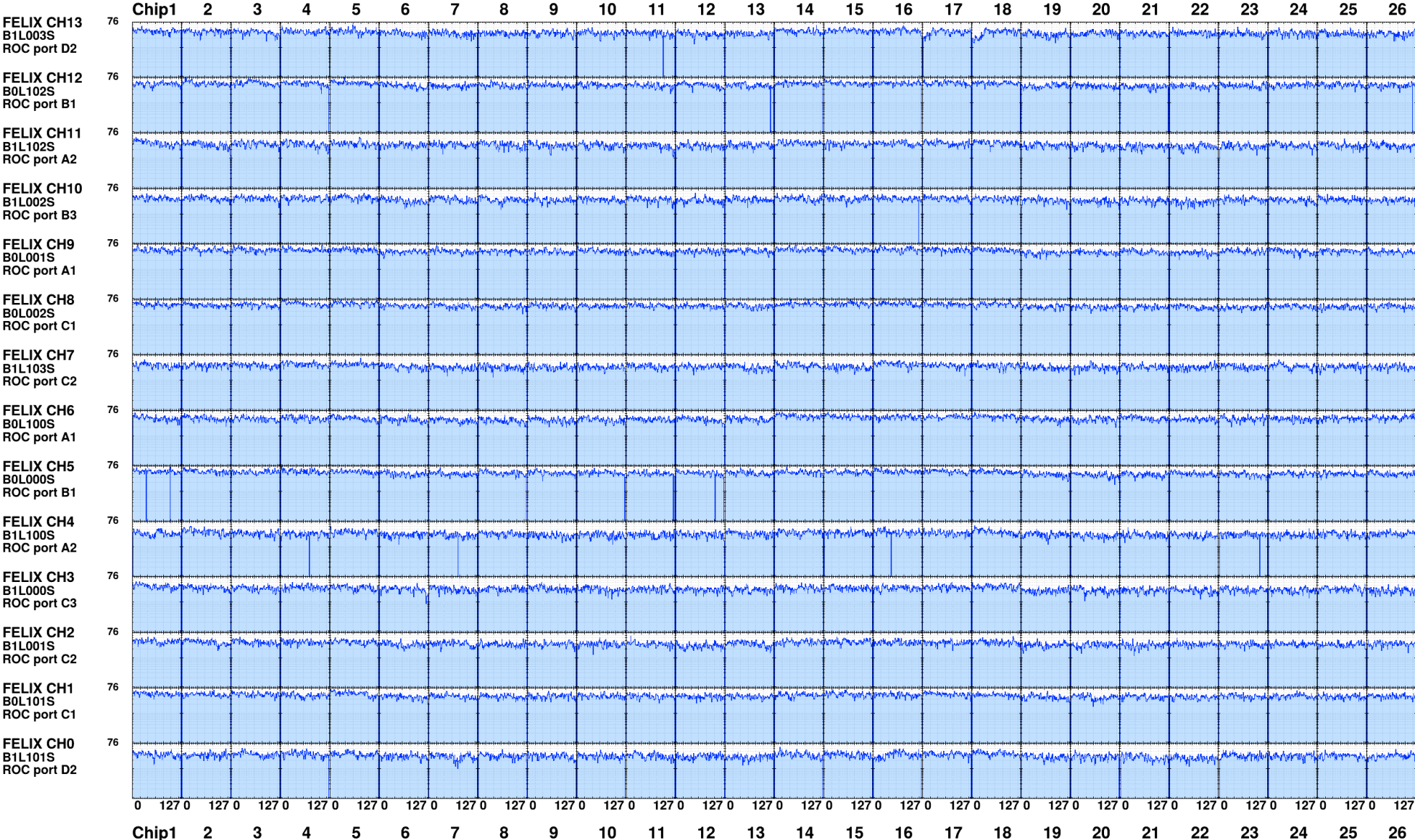
3

- No issues were found in the online monitor. Nothing was recorded in the Elog.
- The duration times of these runs were 40 minutes and 1 hour.



# QA plots for Run75535

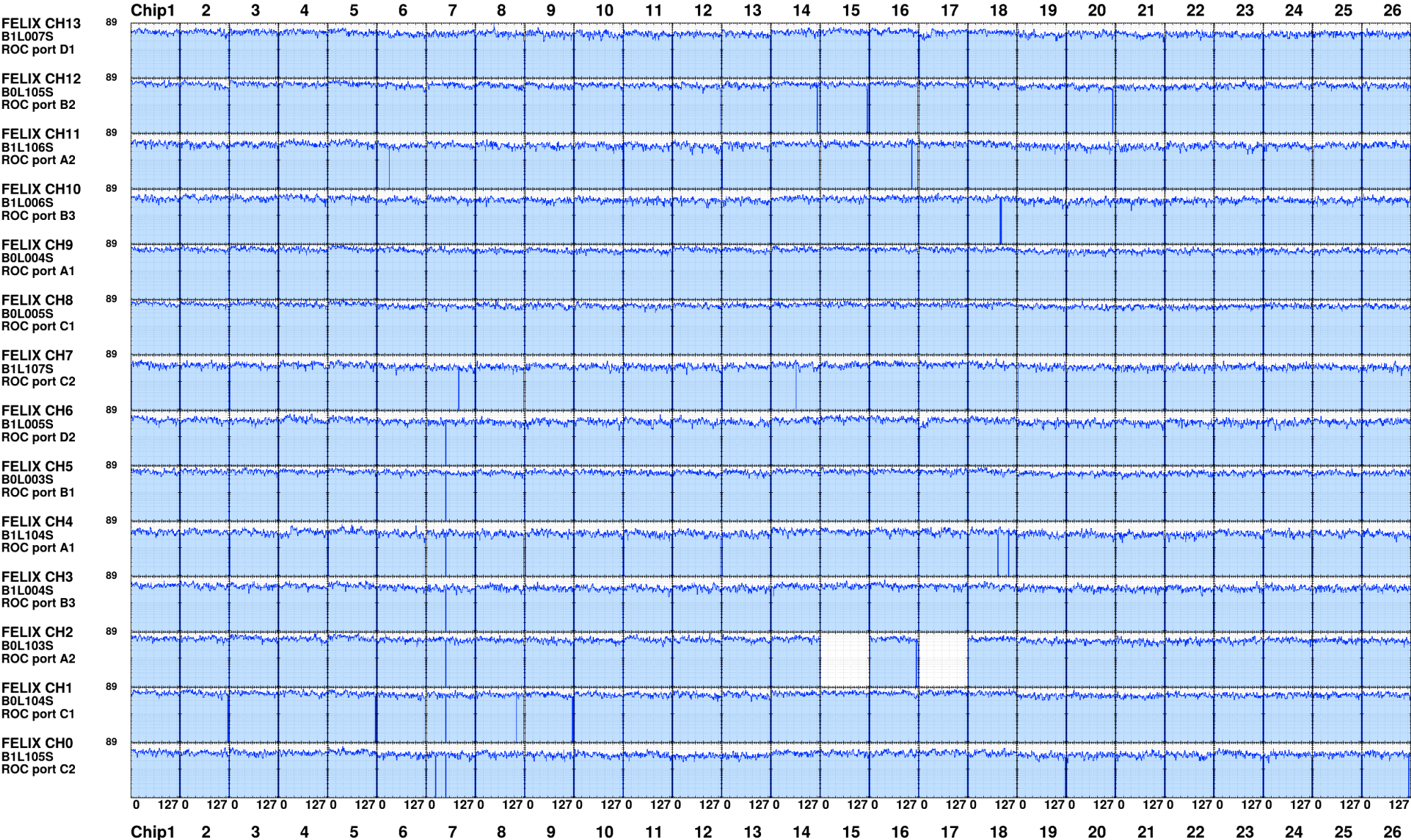
intt0





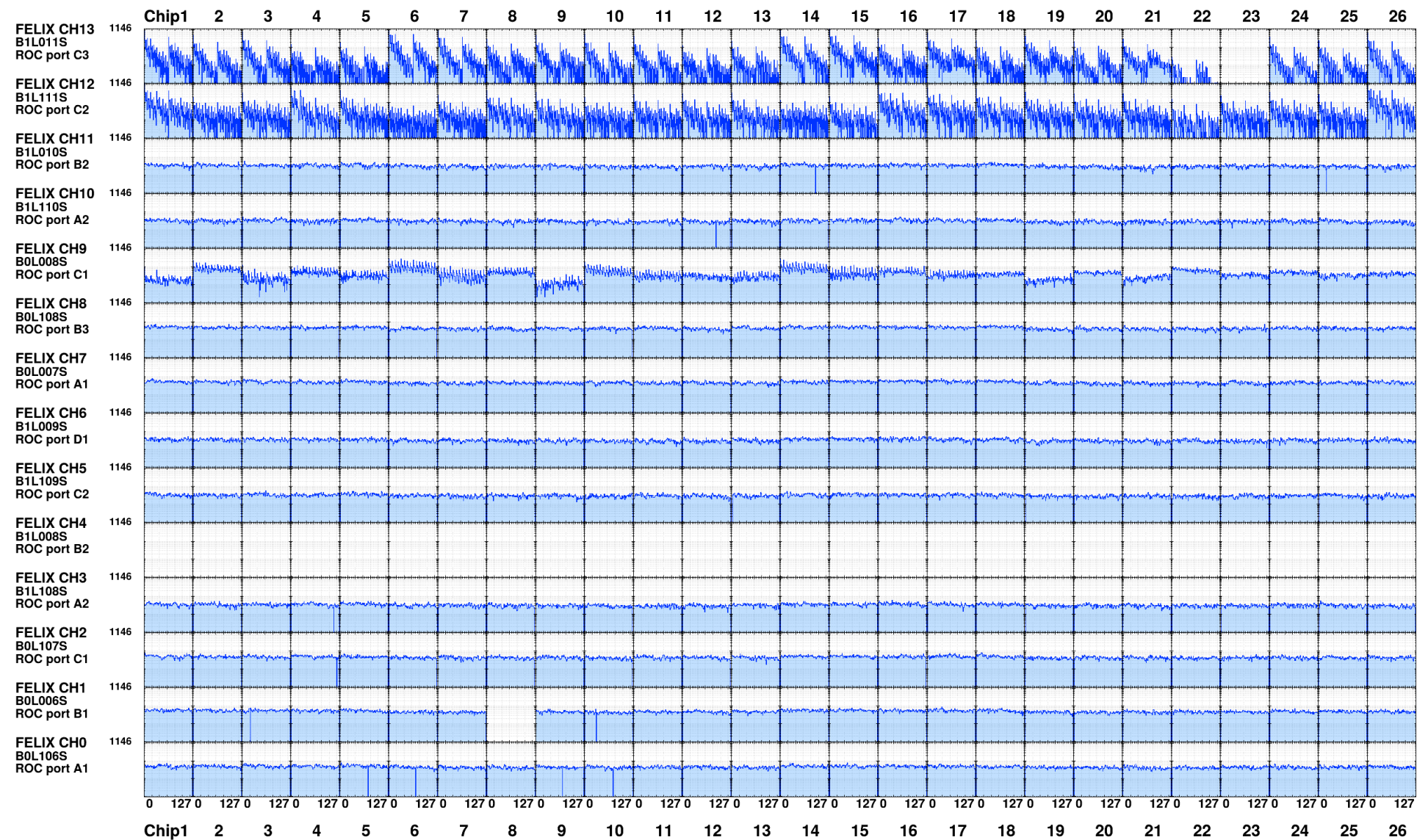
# QA plots for Run75535

intt1



# QA plots for Run75535

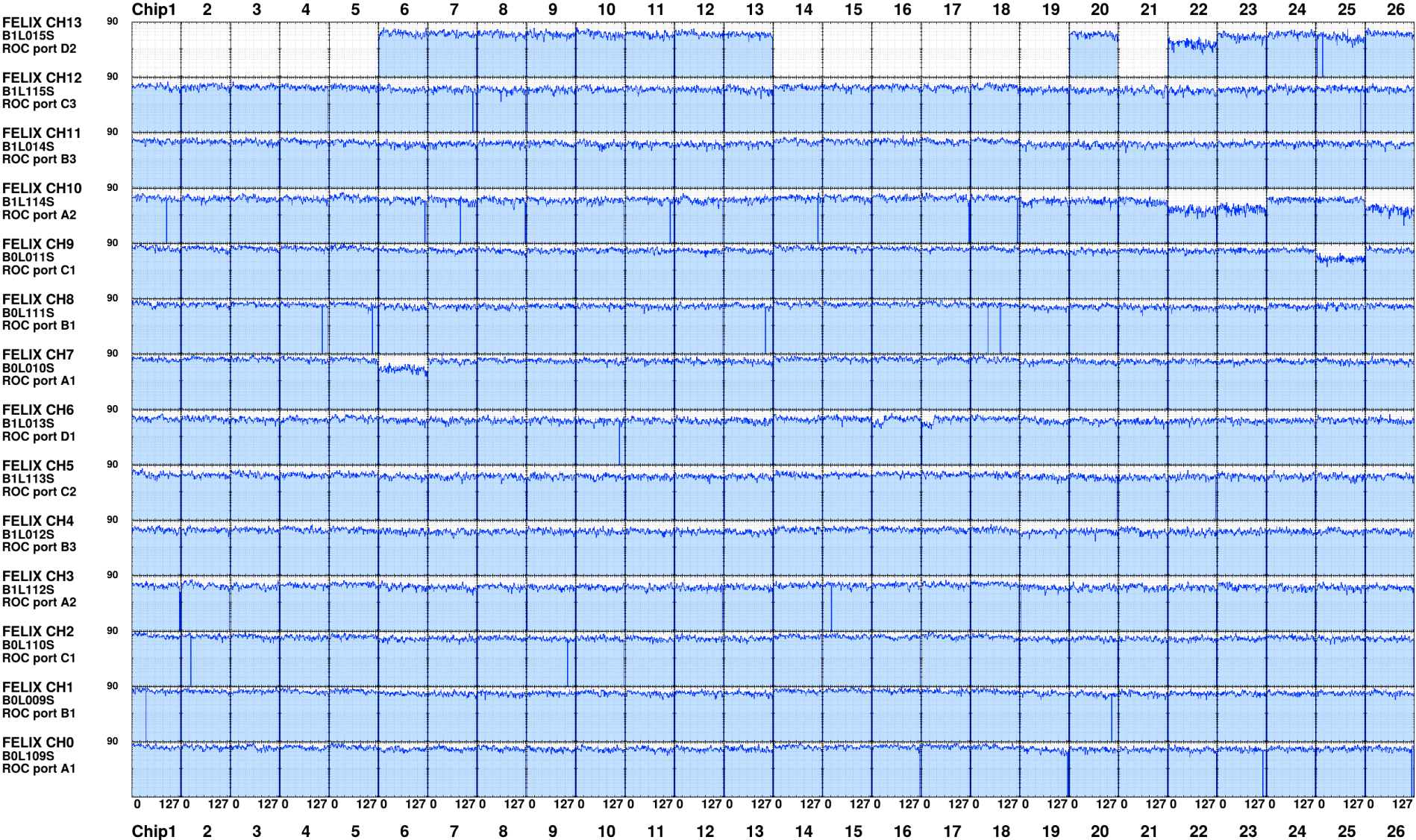
intt2





# QA plots for Run75535

intt3



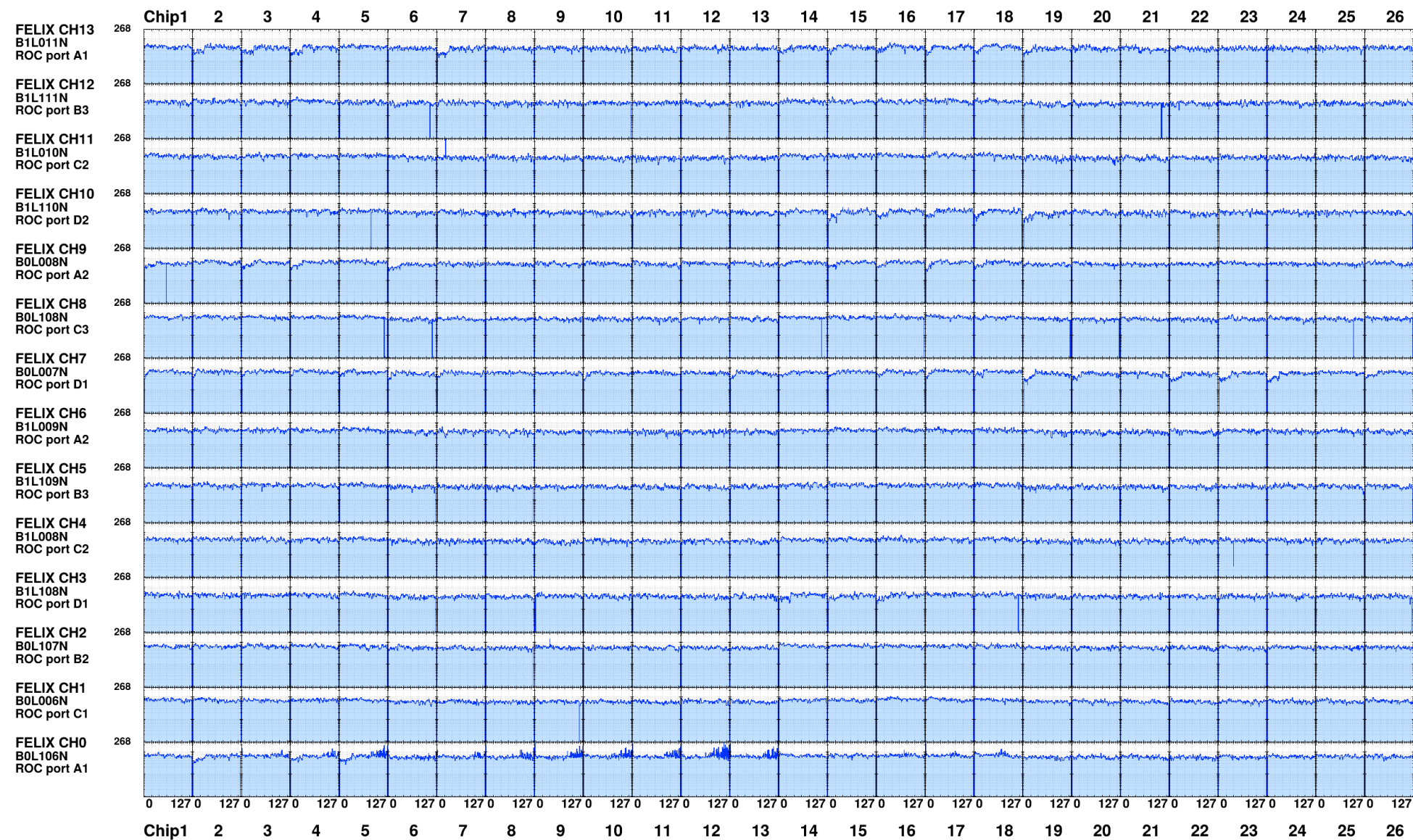
## 8





# QA plots for Run75535

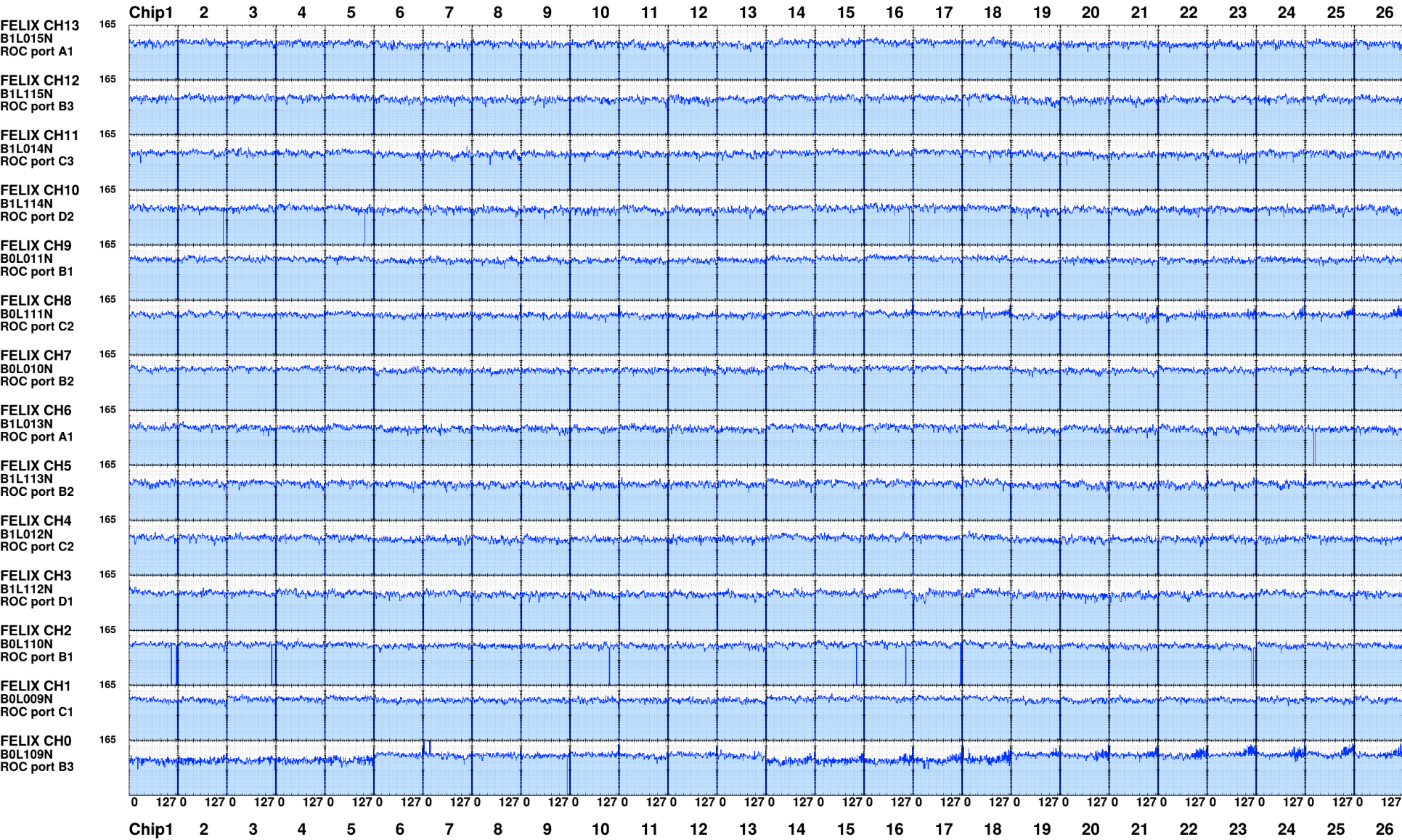
intt6





# QA plots for Run75535

intt7

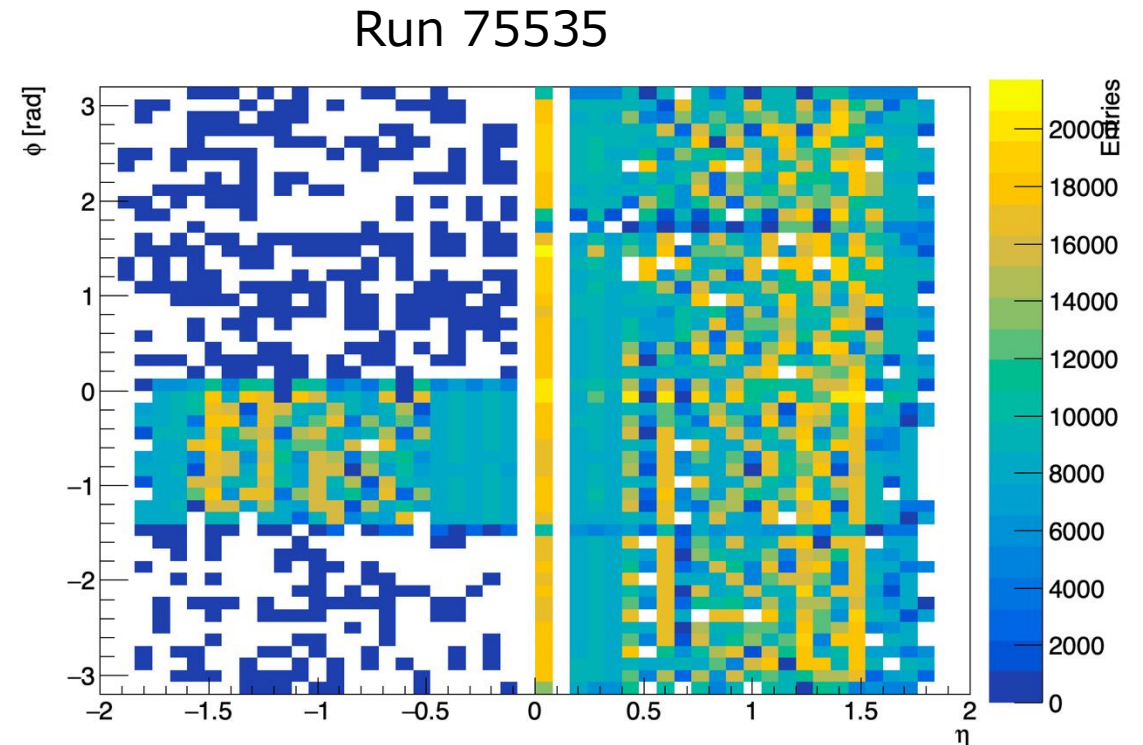
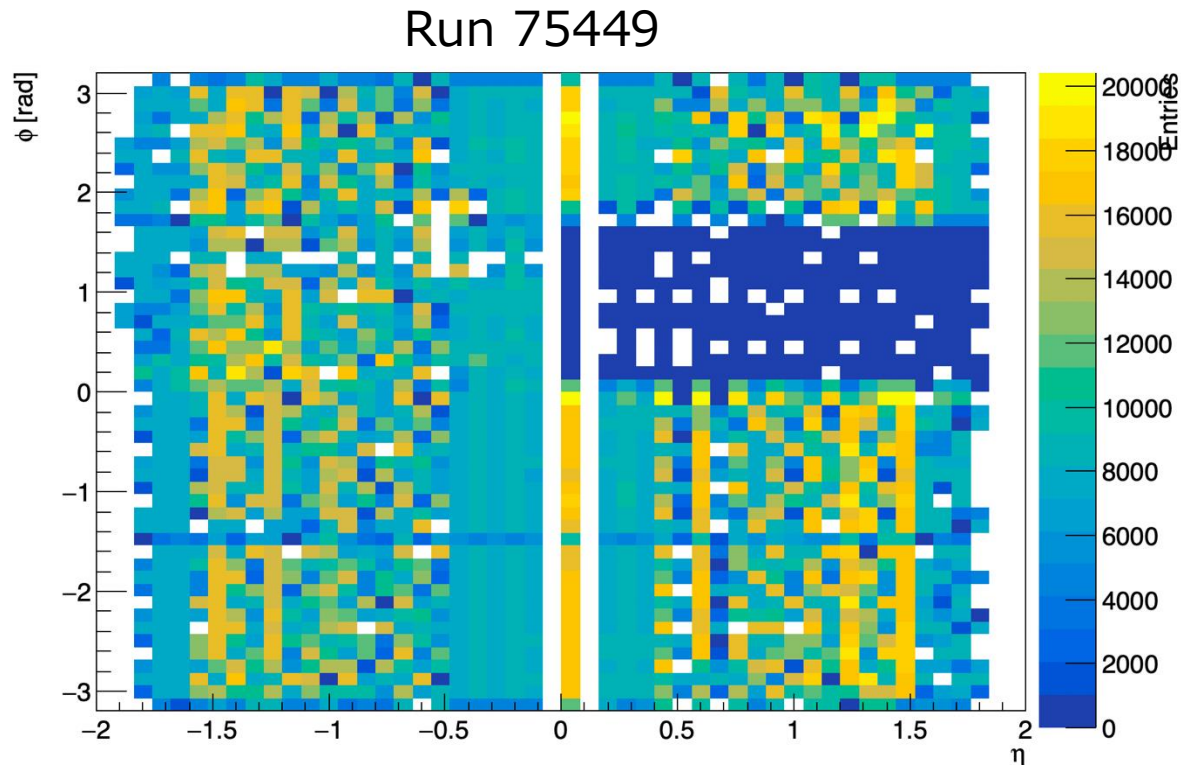




# $\eta$ vs $\phi$ with INTT local decoder

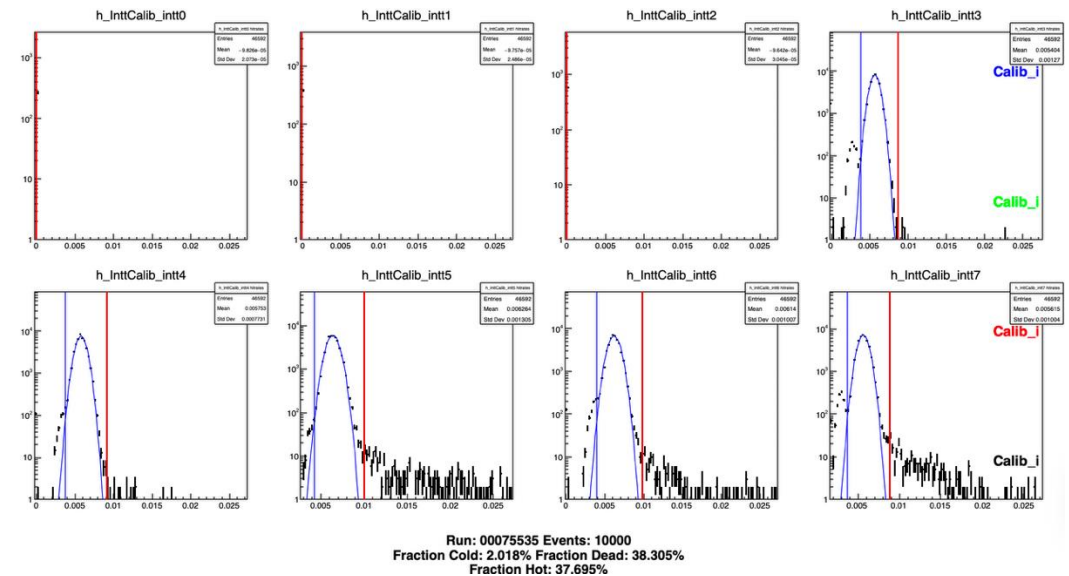
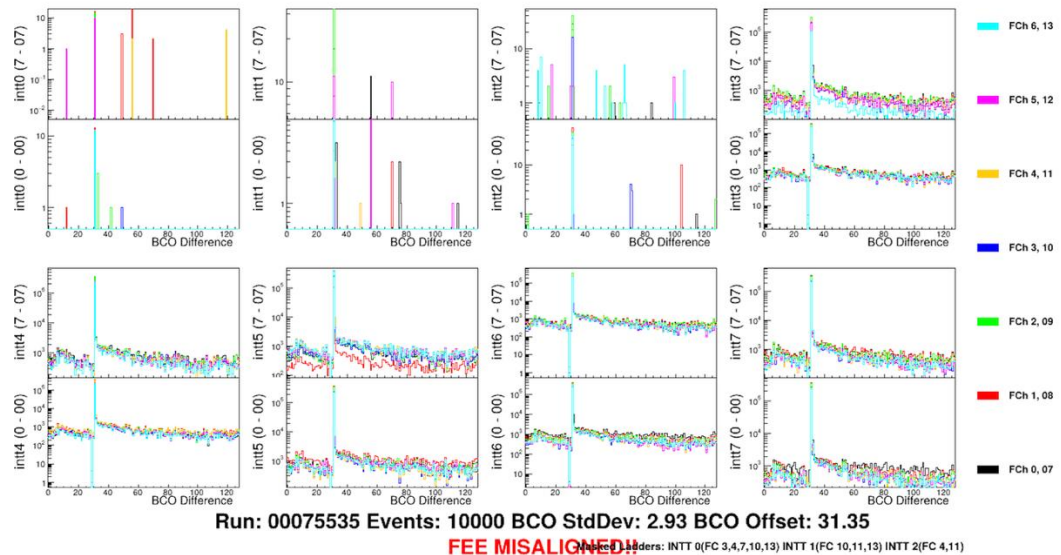
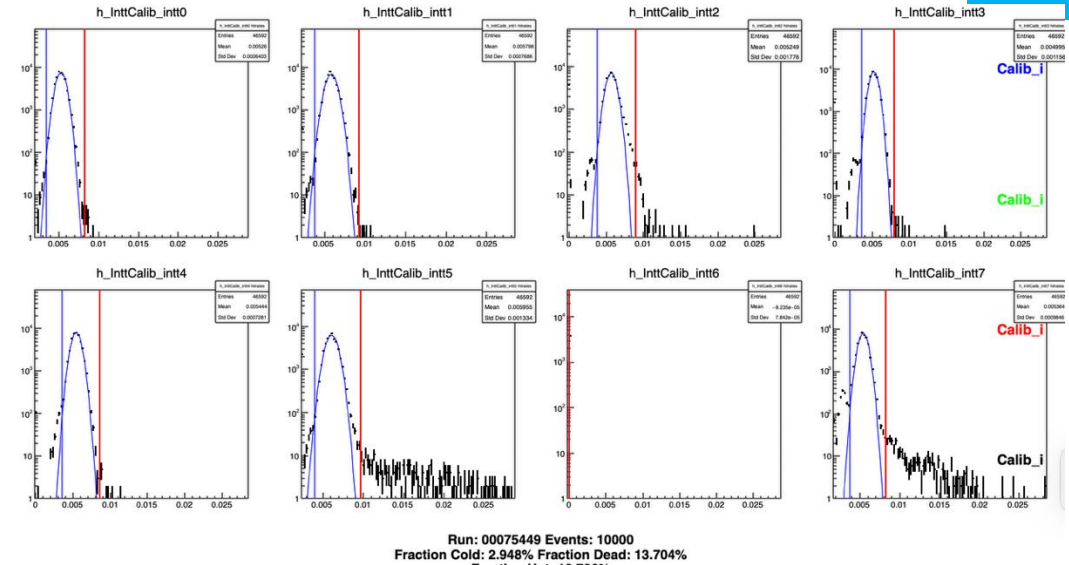
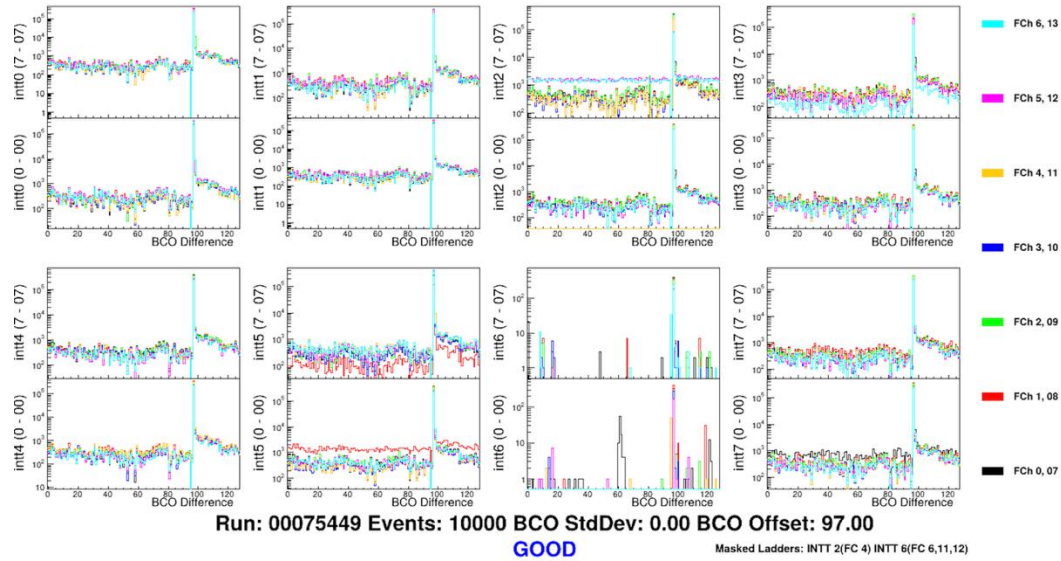
12

- Similar to the offline cluster QA.
  - Checked 10k events
- The number of raw hits is low in INTT6 for Run75449 and in INTT0, 1, 2 for Run75535



# Calibration files for Run75449 and Run75535

13



# Summary

---

- Large acceptance losses were reported in two recent runs with by the offline shifter.
- No issue visible in the online monitoring.
- The same issue is observed even when using the local decoder.