

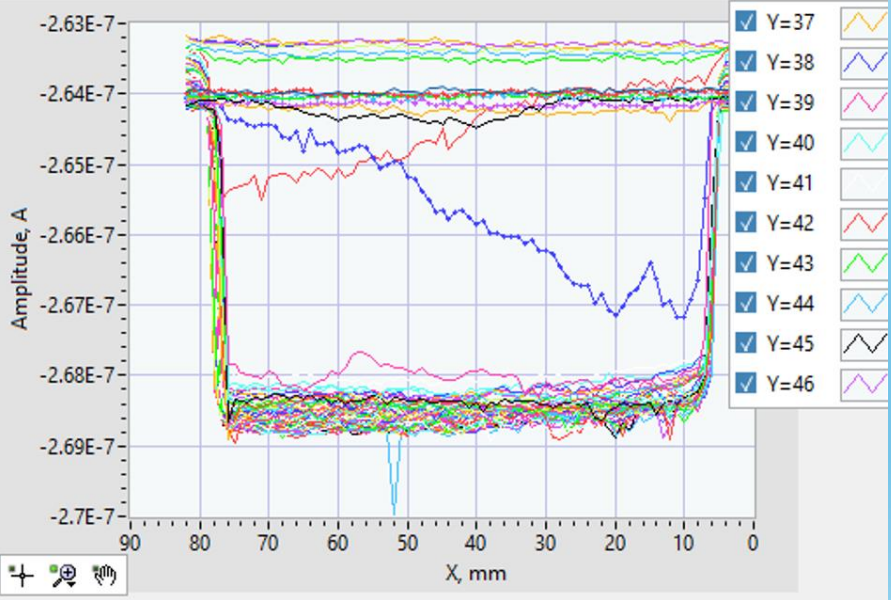
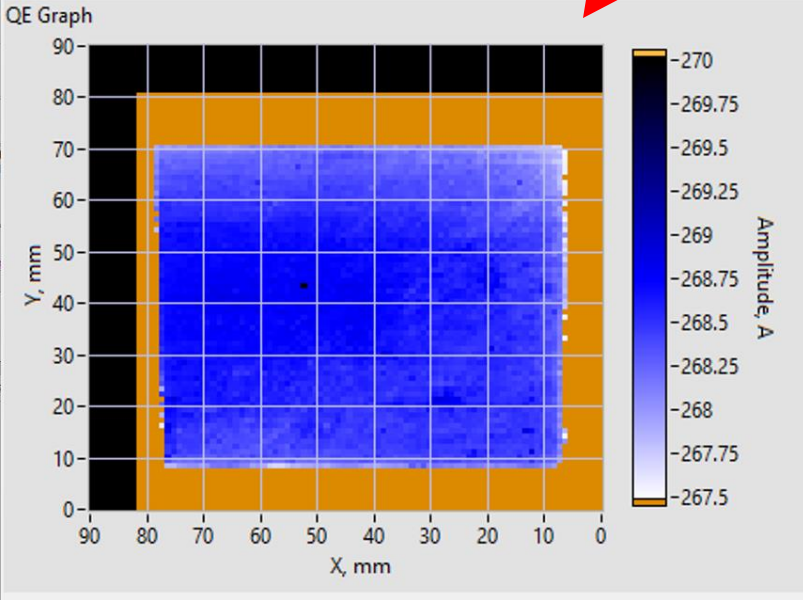
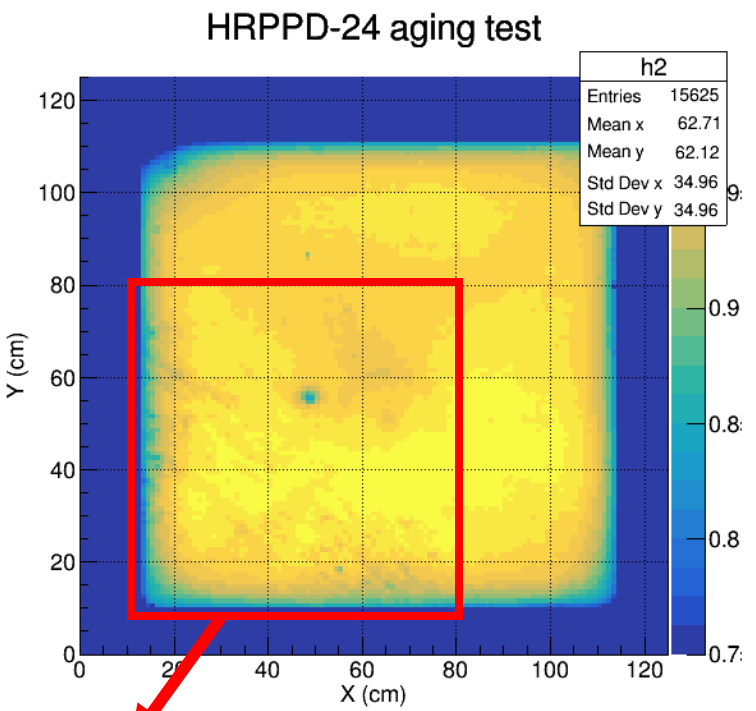


## Update on HRPPD tests

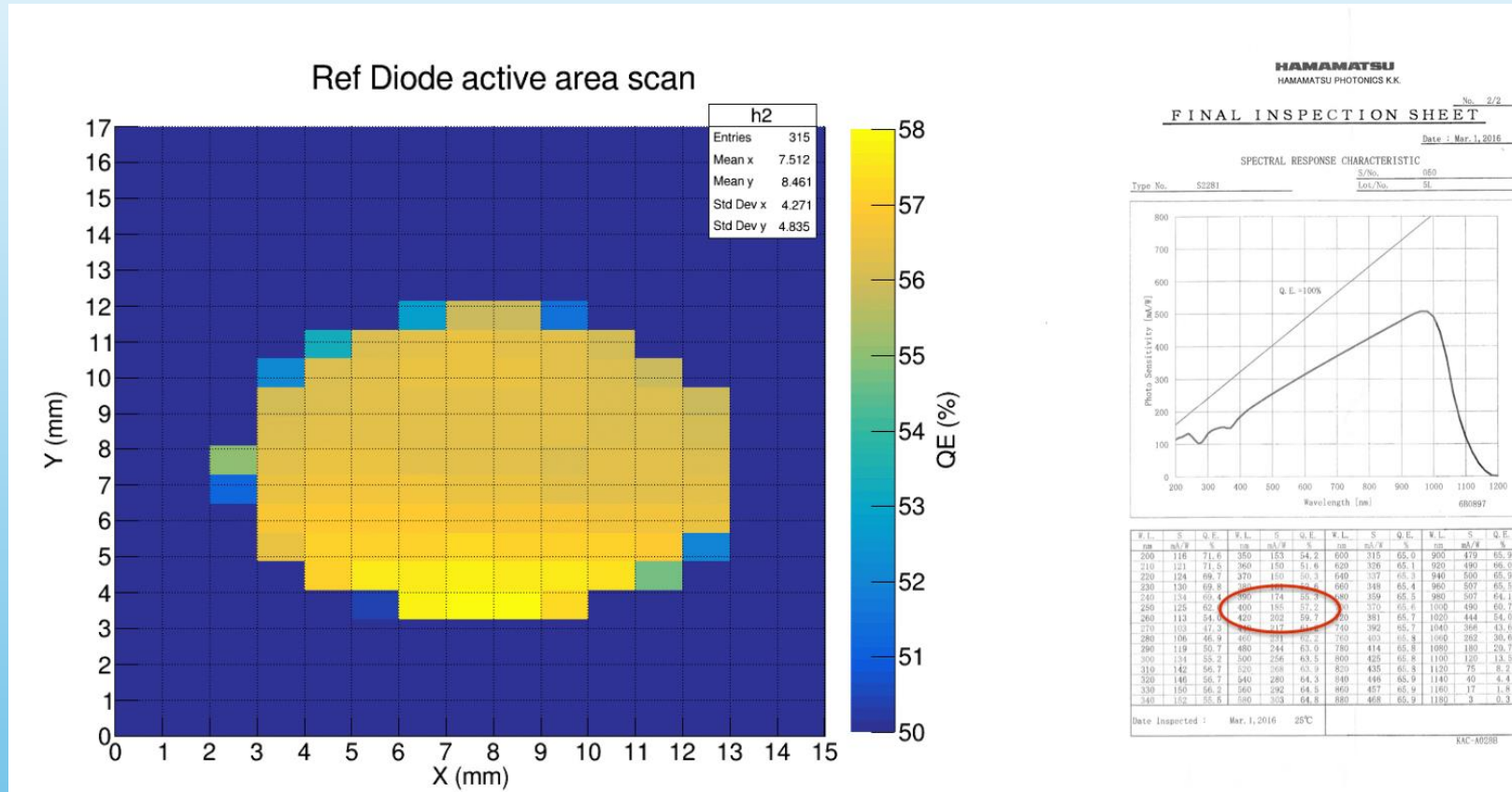
Arshak Asaturyan



**Partial scan of Active area**

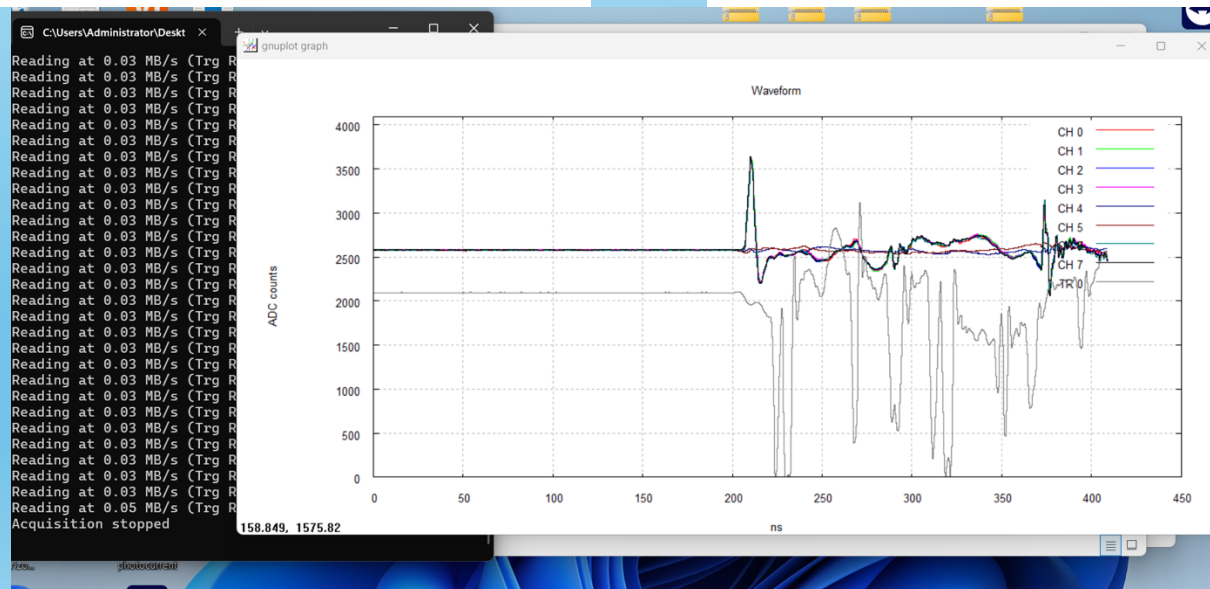
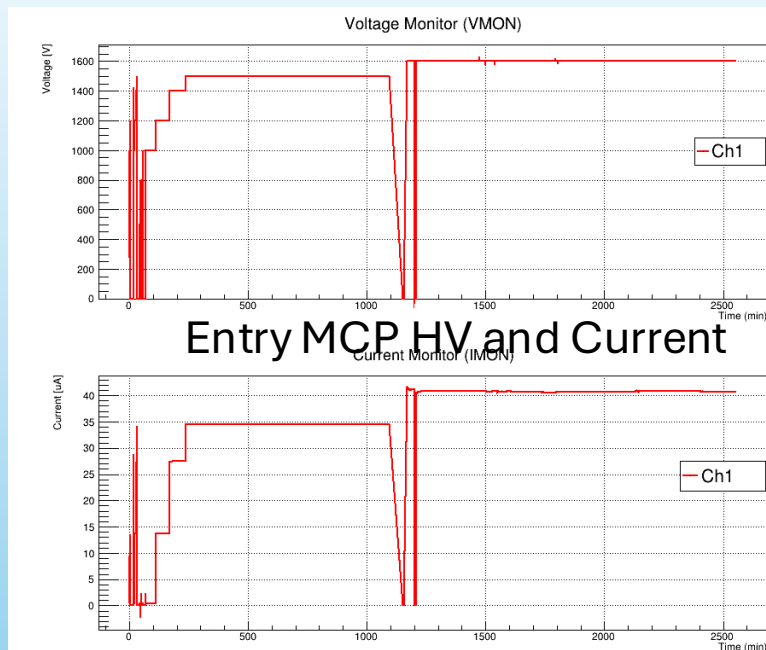
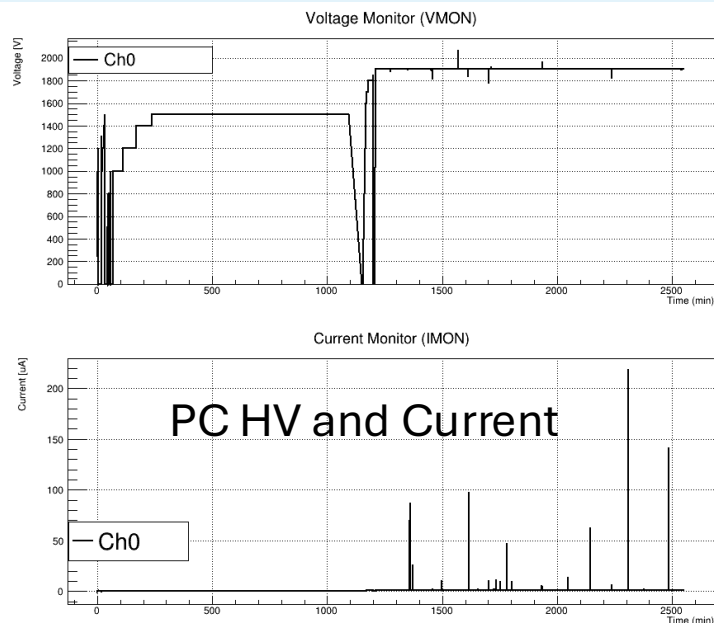


## Reference diode active area scan and QE



- QE of the reference photodiode (Hamamatsu S2281) was measured with 405 nm laser
- The reference photodiode QE was calculated to be approximately 56.7% +/- 0.9% which is in good agreement with the manufacturer's reported QE

# HVs and long-term run



Spike??? signs from the digitizer, no laser was ON

