

Hall D

Commissioning Beam Test Preparation

Logistics

See email with subject: *Hall D Parasitic Beam Test – Registration, Training, and Logistics (on what we know now)*

- Please proceed with registration and required training

Asana:

<https://app.asana.com/1/1206466510795502/project/1208194673081558/list/1208206471342792>

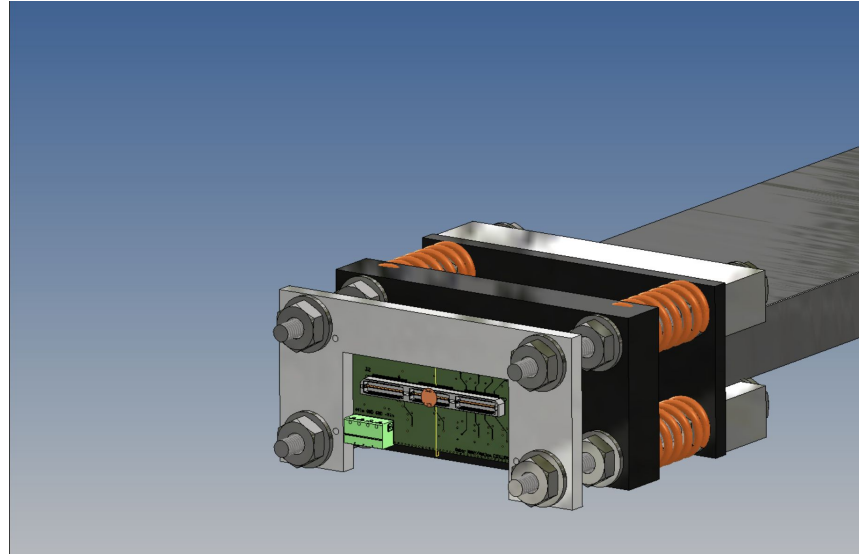
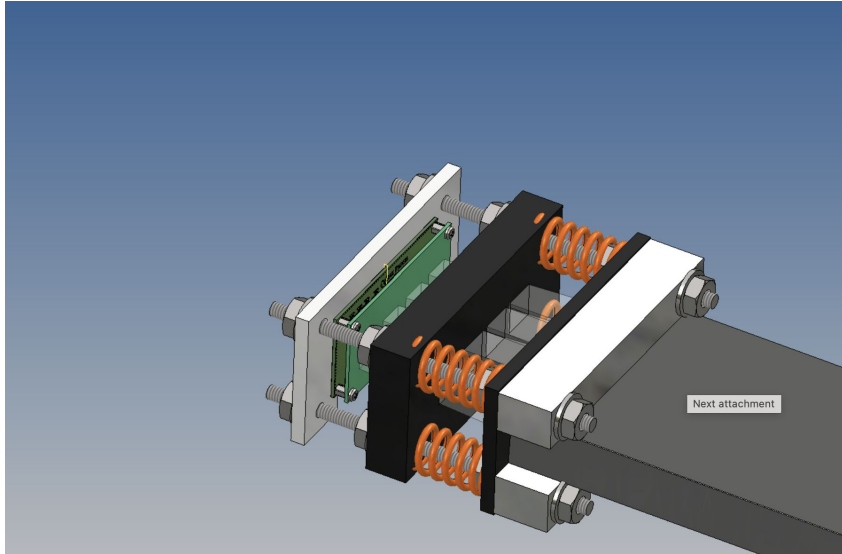
Mattermost:

<https://chat.epic-eic.org/main/channels/bic-beamtest>

Mechanics

2 ANL-build SFILs Produced, 3rd in preparation

Light guide adjustment almost ready (waiting for the summing board with MCX connectors to confirm)



Support Structure Ideas

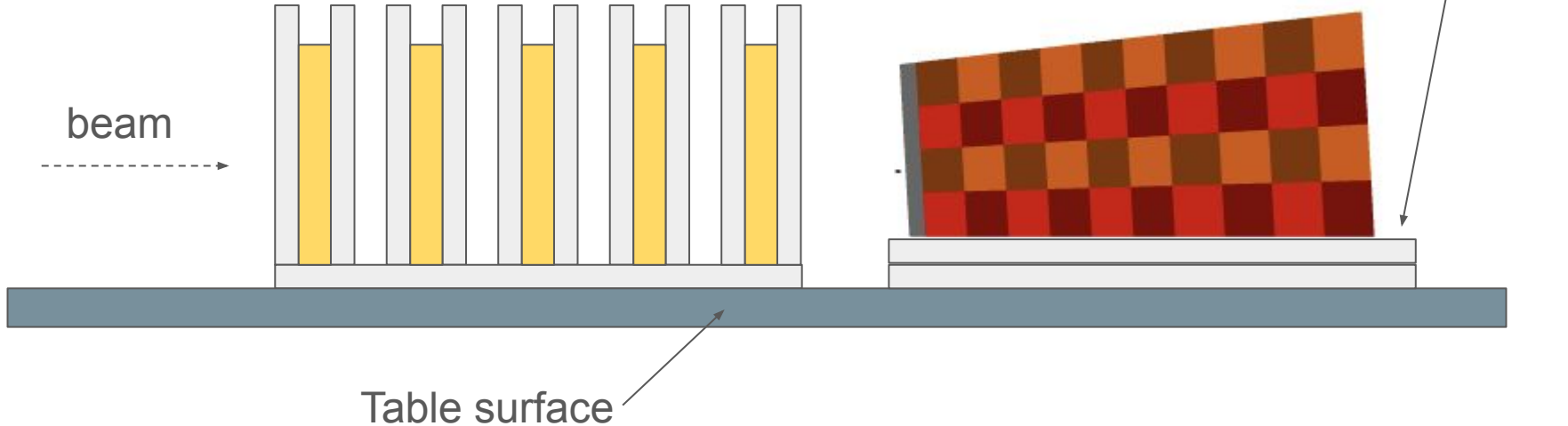


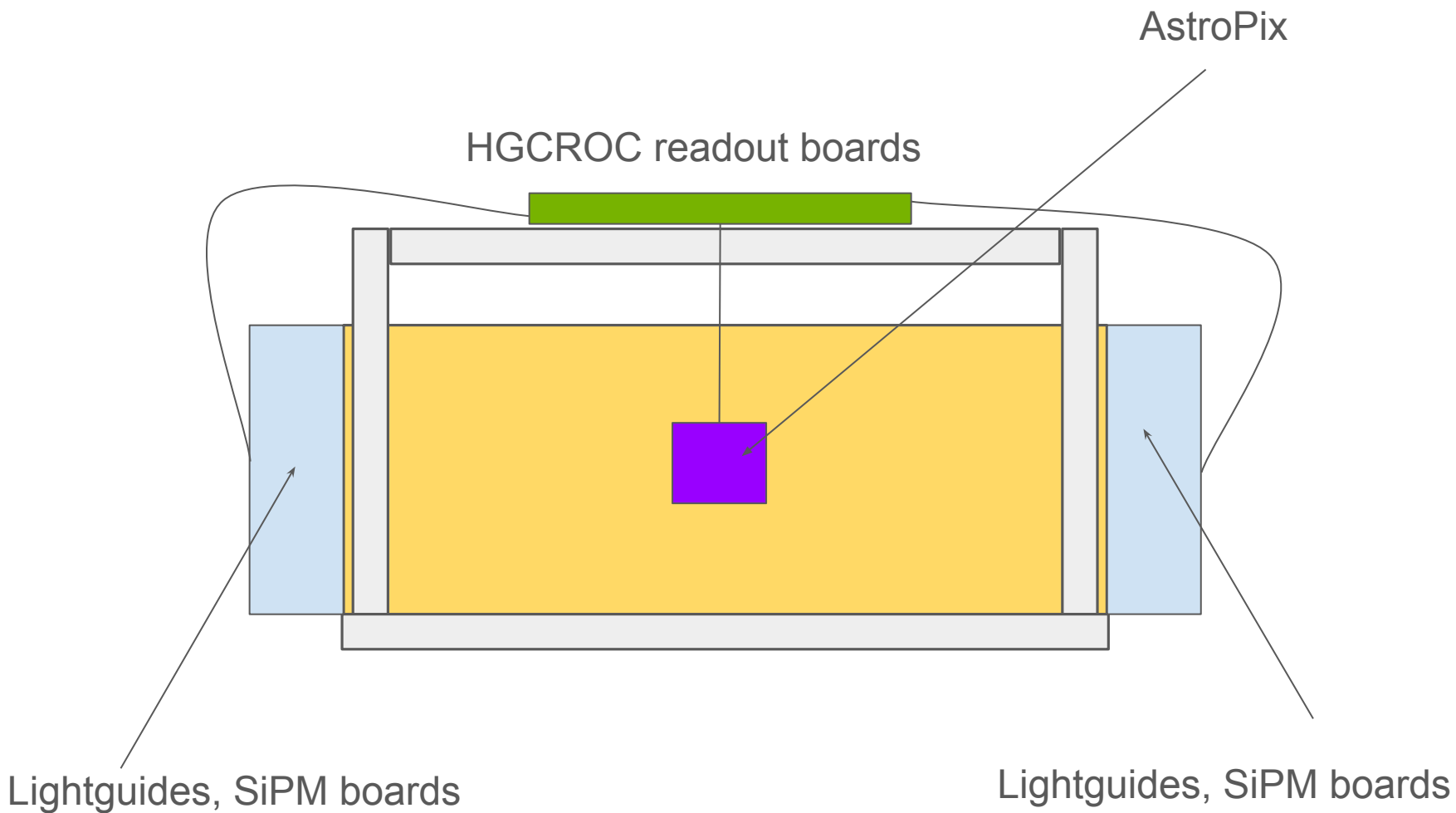
SFIL

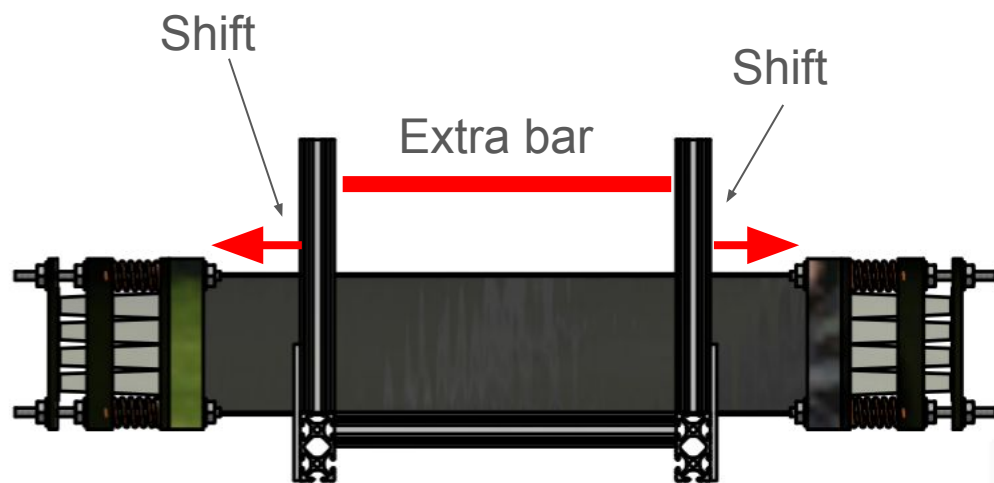
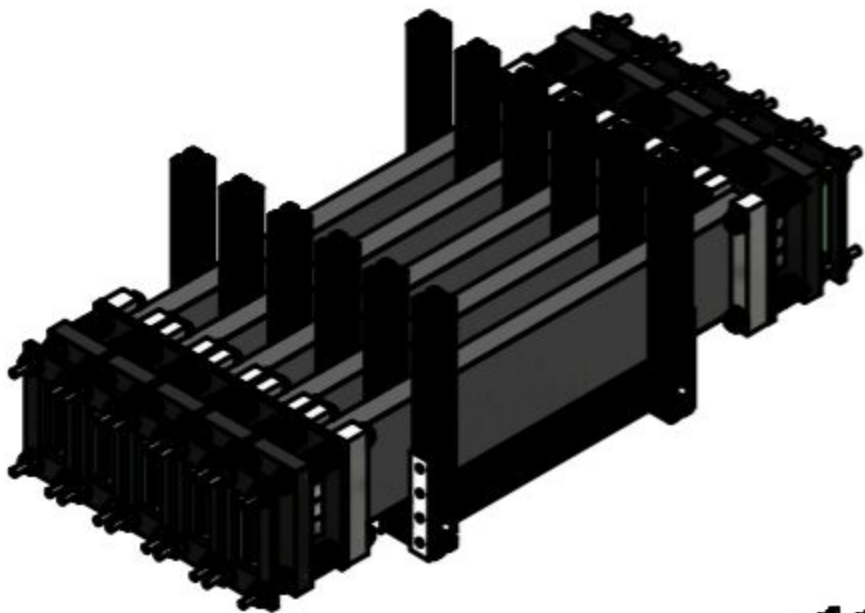


80/20

This is **side view** of the setup on a table:







Some Considerations

- Items to be most probably shipped end of Feb
- We ship everything but electronics (not decided yet what to do with computer)
- Baby BCAL loan till end of April, we decided we will ship it too (can put in the beam test if we are ready with readout units (CAEN, most probably))

SiPM readout



20 mini-SiPM boards ready

Those will be connected to the adapter boards

I would like to ask about the status of the order of adapter (8) and summing boards (link on Asana)

