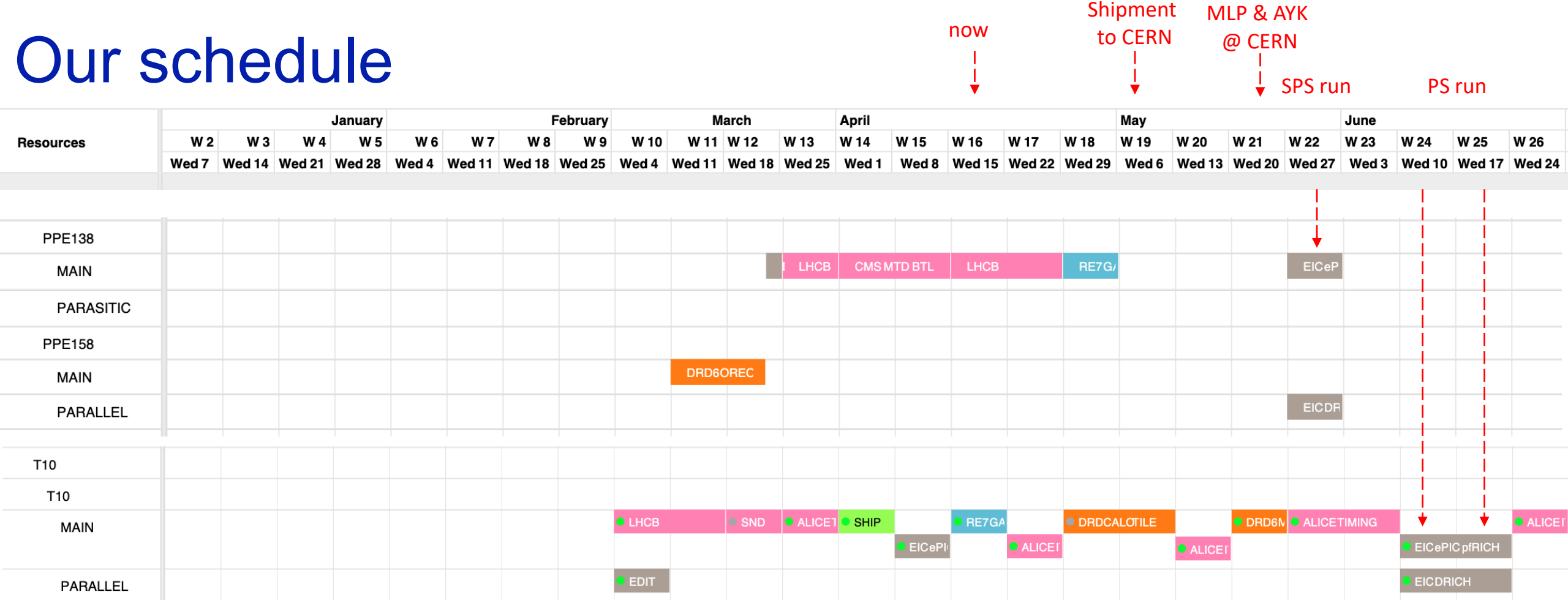
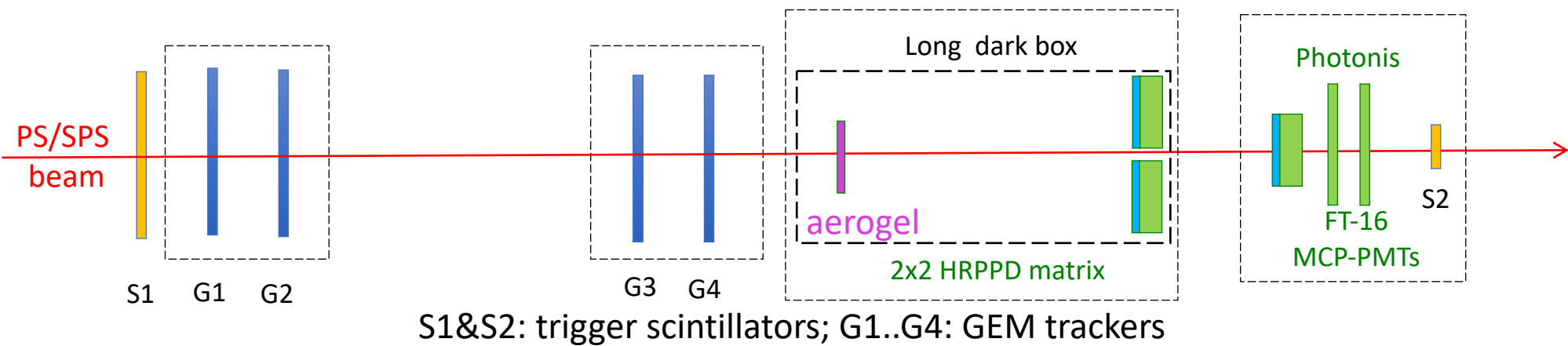


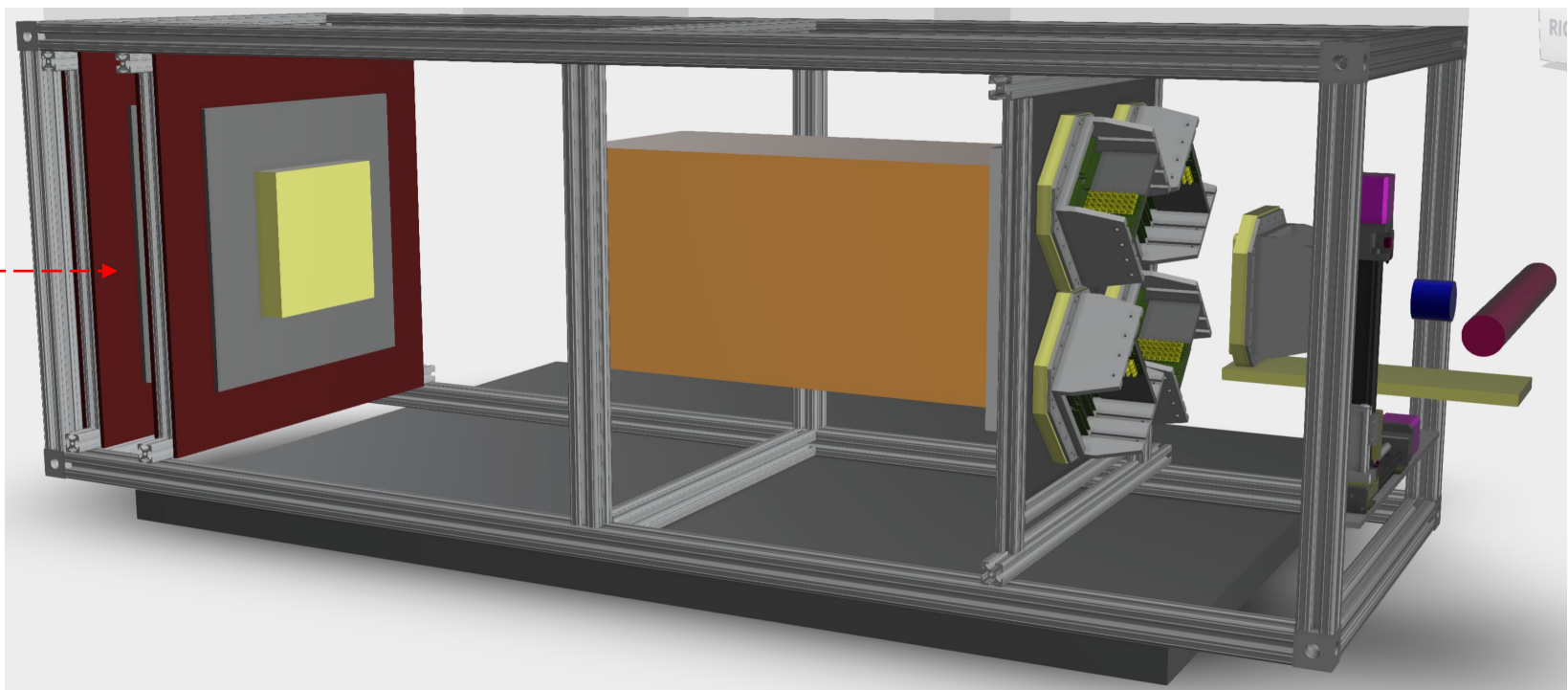
Our schedule



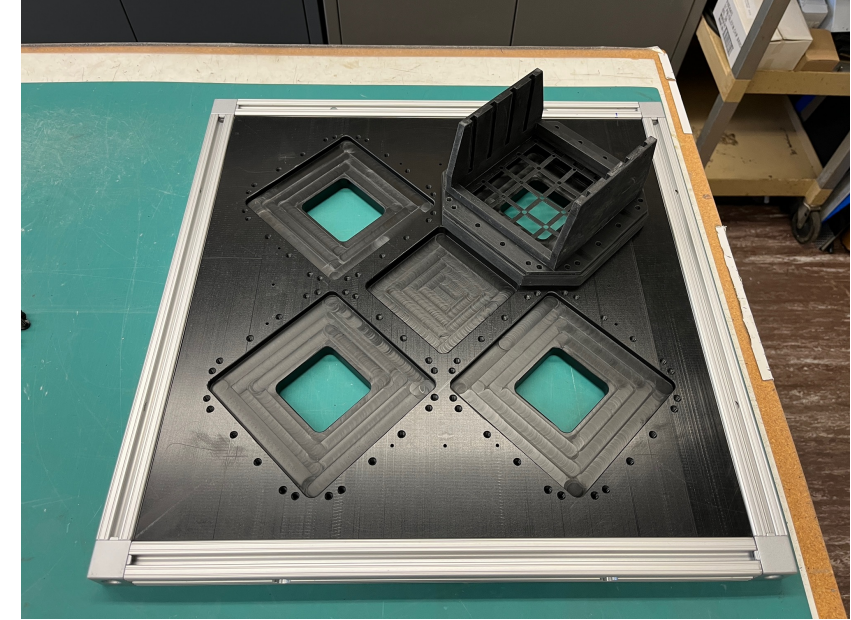
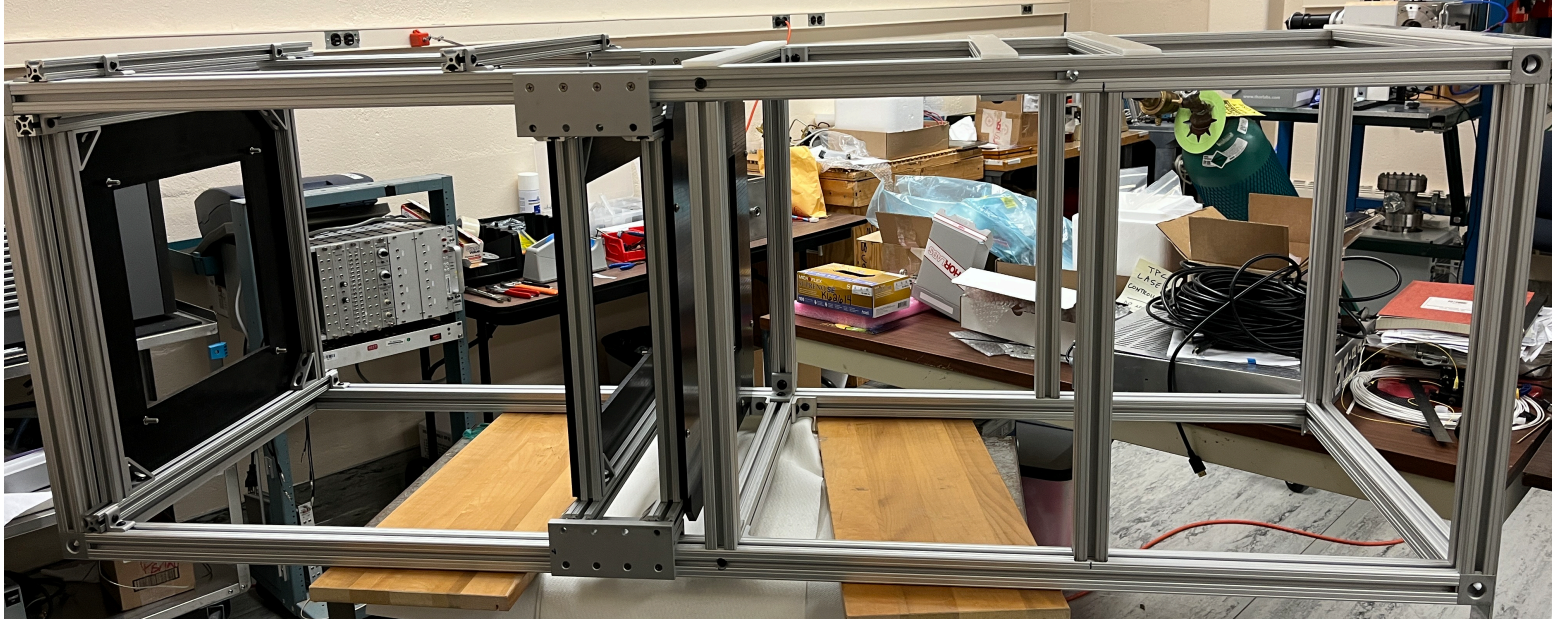
Hardware configuration



Downstream GEMs
In a parking position

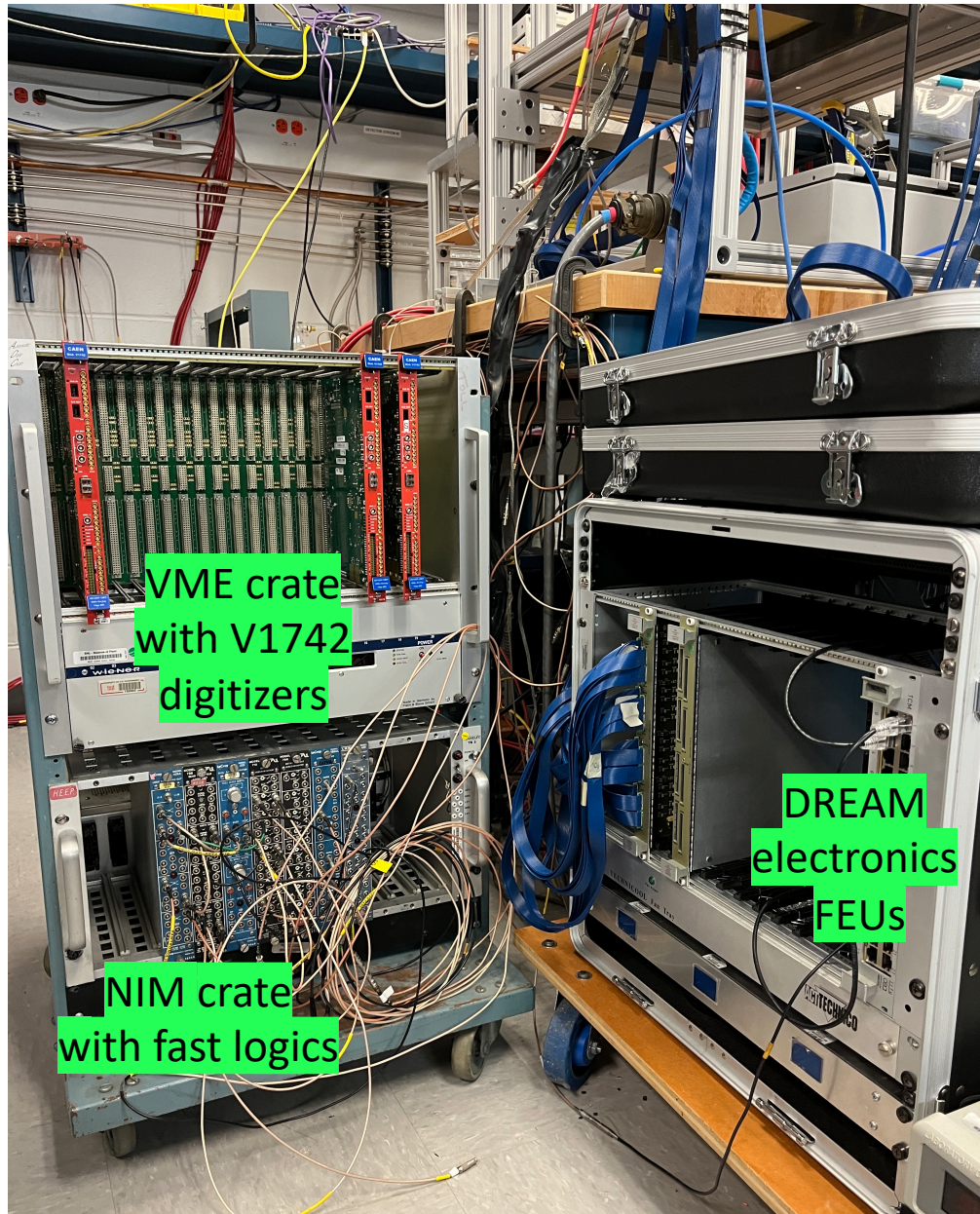


Construction work



- Chassis construction is in a good shape
 - No showstoppers; just needs time
- Received resin and support material for 3D printing yesterday
 - HRPPD enclosures should be ready early next week

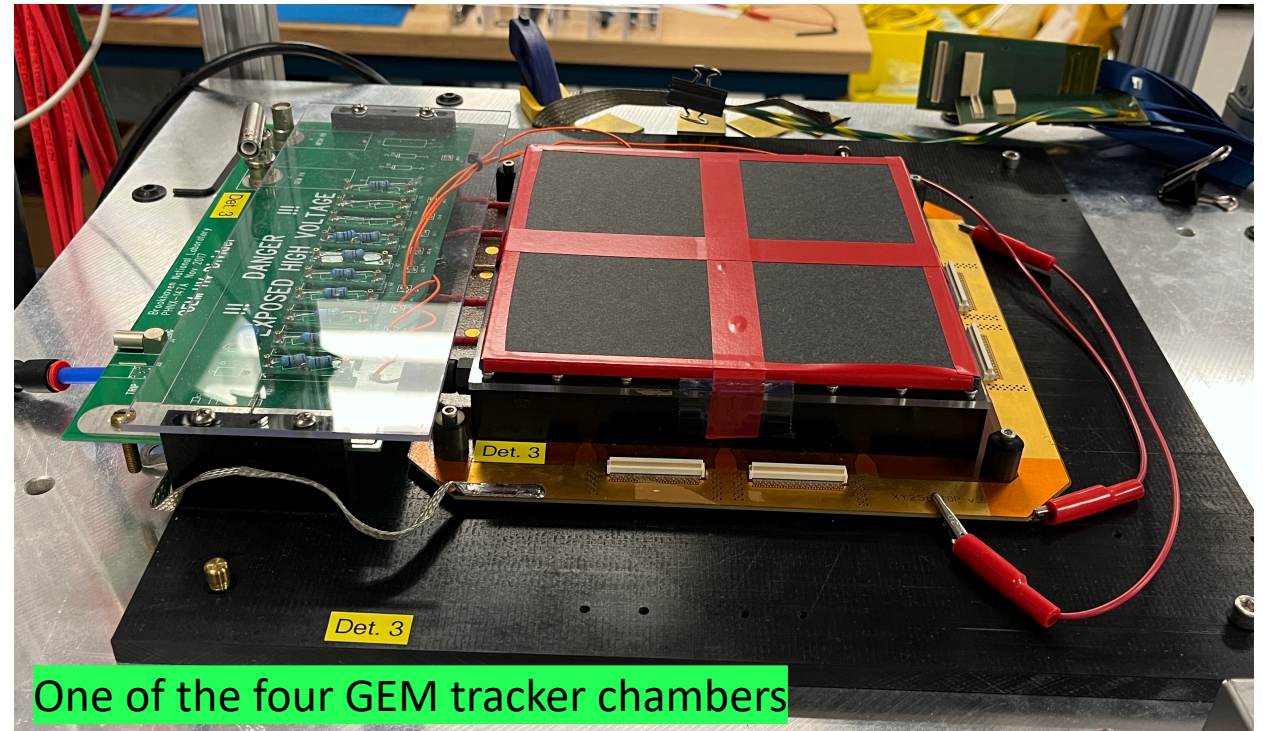
Tracker DREAM electronics & DAQ integration



VME crate
with V1742
digitizers

DREAM
electronics
FEUs

NIM crate
with fast logics



One of the four GEM tracker chambers

- DREAM RCDAQ driver revived and works fine
 - As well as data decoding software
- GEM chambers will be tested next week
- Adding digitizers will take ~2 weeks
 - 4-port PCIe cards availability; test stand work
- **Accelerator plugin needs to be resurrected**
 - Otherwise, will be taking data @ ~6 Hz or so

Other topics

- MCX adapter manufacturing is eventually on track
 - Though they will be arriving late anyway (best guess: end of next week)
 - Which means cabling will be done at CERN
- UV filter(s) are available; their transmission curves were measured earlier
 - Ping is incorporating them into GEANT (and aerogel transmission curve as well)
- HRPPD QE and gain uniformity scans are being done by Ping
- HRPPD #23 will be sent to Incom today
 - Our fault - forgot that it has never been repaired after a malfunction in August last year
- Photonis MCP-PMTs must be OK (used on a TOF PET setup)
- Trigger scintillators, gas panel - work in progress
- Mirrors, aerogel, trigger boxes, FCFD evaluation boards -> see other presentations