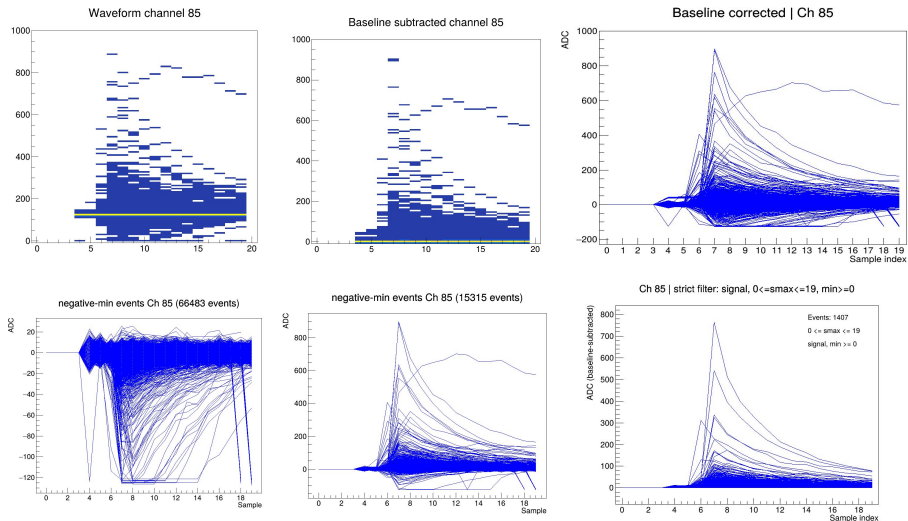
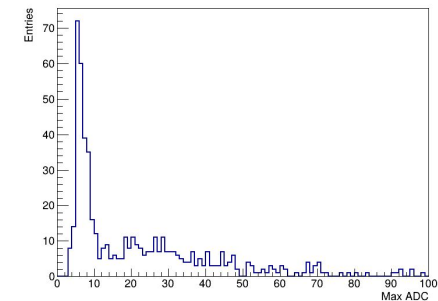
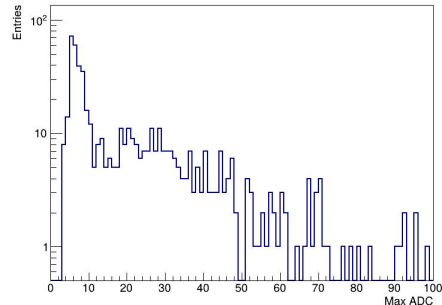
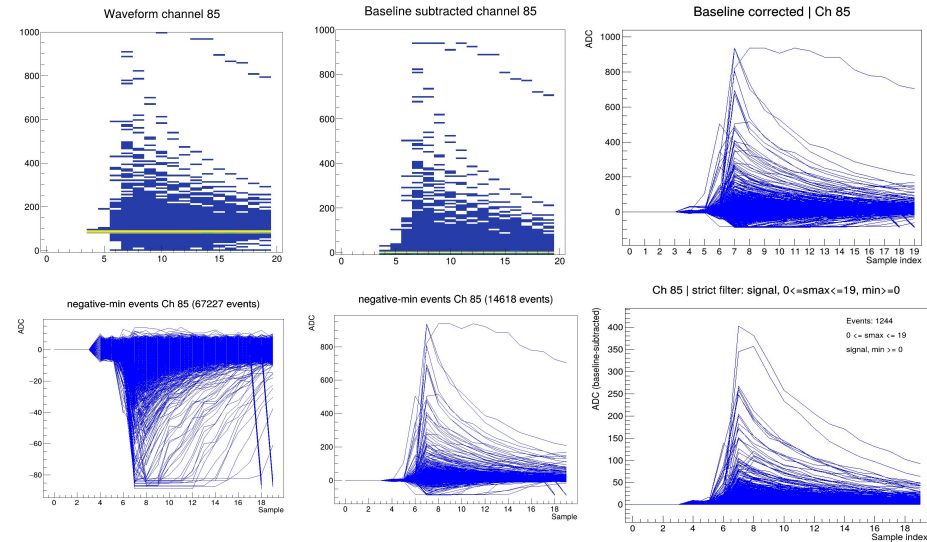
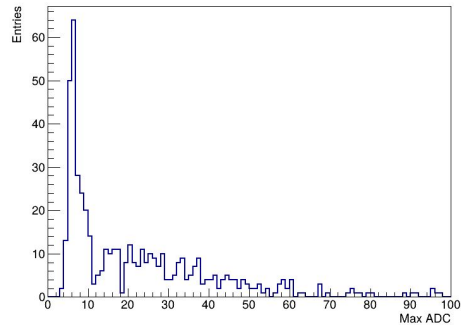
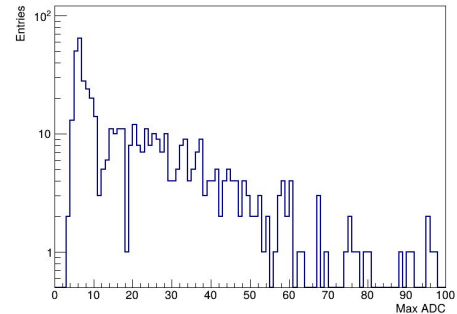


Friday : April 24, 2026

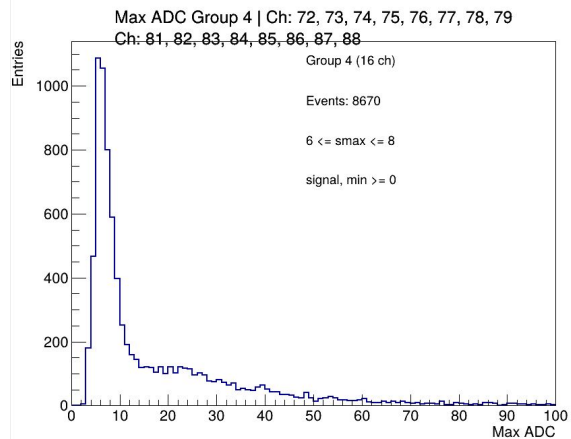
KCUI0 / ASIC 1 (1S) [ch 72 - 143]

Max ADC Ch 85 | $6 < s_{max} < 8$ and $min > 0$ Max ADC Ch 85 | $6 < s_{max} < 8$ and $min > 0$ 

KCUI1 / ASIC 1 (1N) [ch 72 - 143]

Max ADC Ch 85 | $6 < s_{max} < 8$ and $min > 0$ Max ADC Ch 85 | $6 < s_{max} < 8$ and $min > 0$ 

KCUI0



KCUI1

