

Burnup of a “CANDU” Pin Using ENDF/B-VIII.0 and ENDF/B-VII.0 in MCNP6

Ibrahim Attieh

Reactor Core Physics

SNC-Lavalin Nuclear

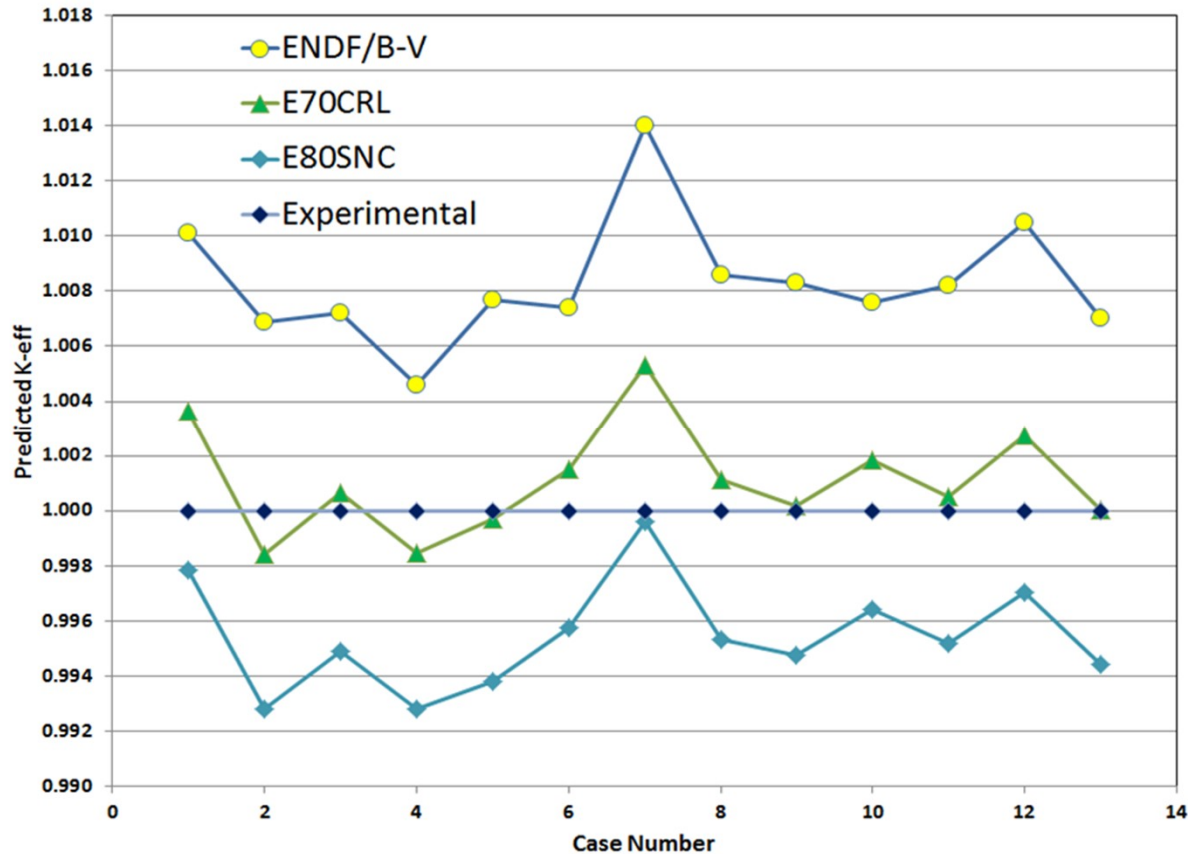
At CSWEG Annual Meeting

November 5 to 7, 2018

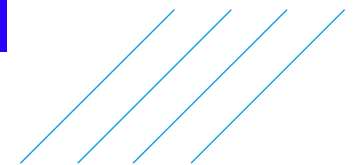
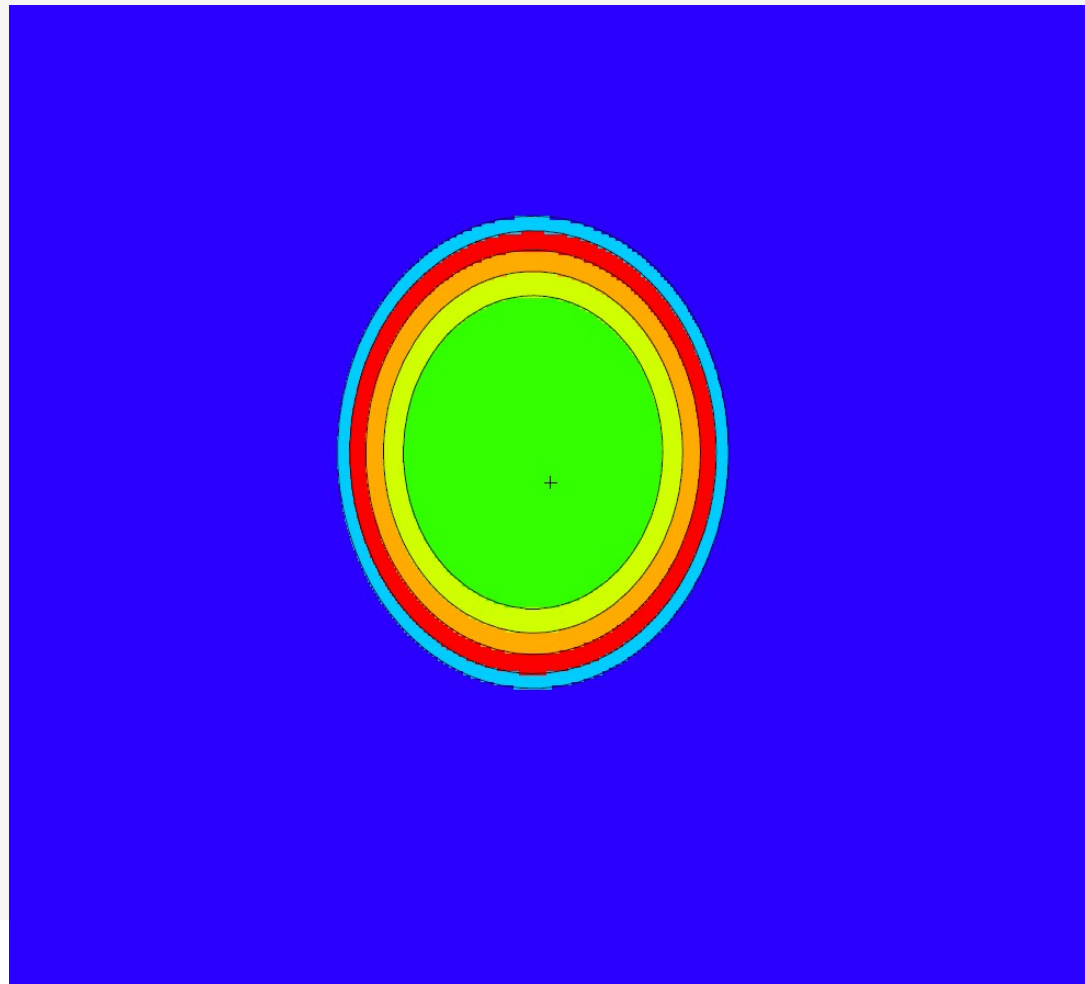


SNC • LAVALIN

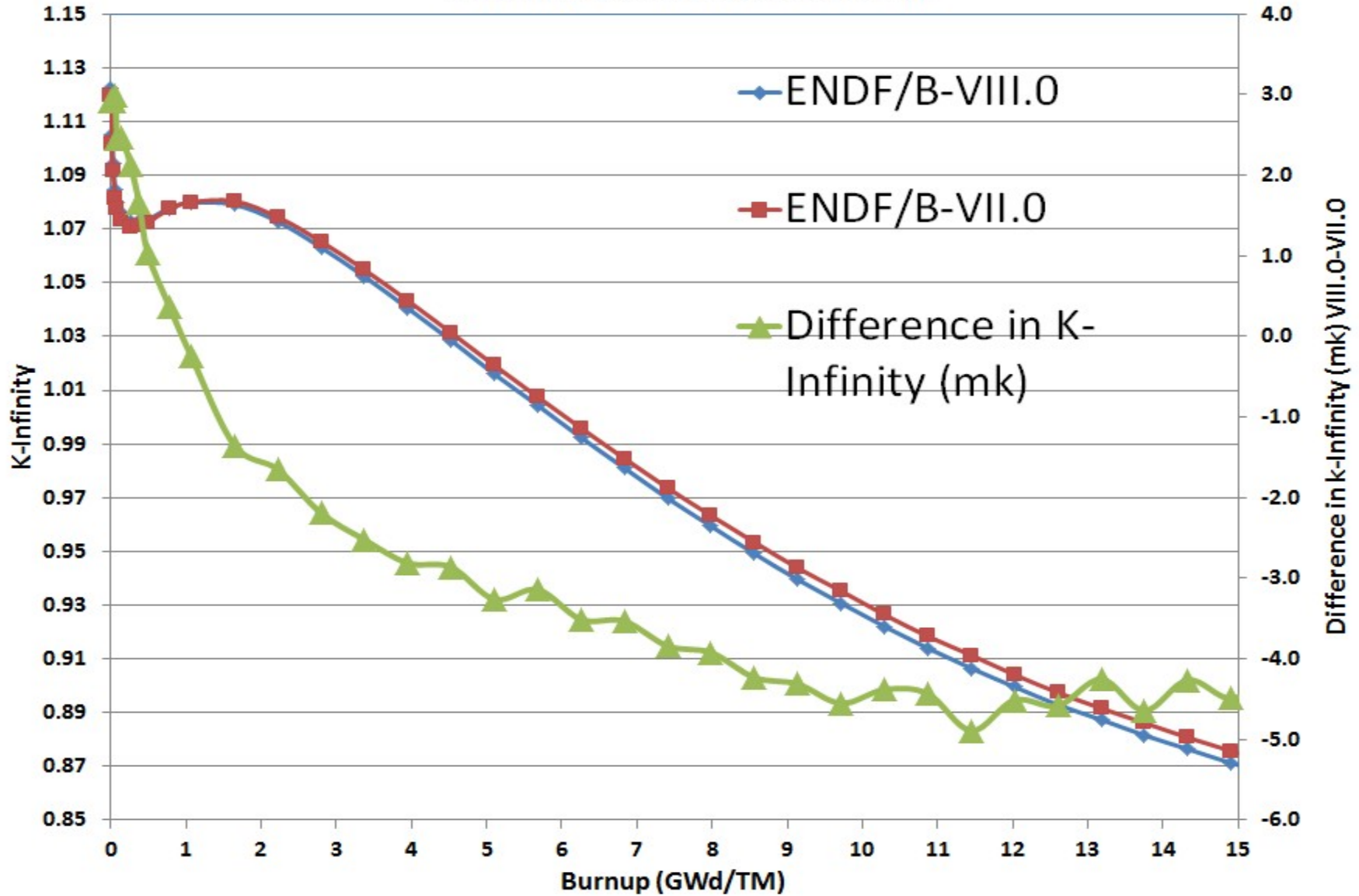
Predicted k-eff for Water-Reflected 14-Inch Diameter of Plutonium Nitrate Solutions 0.54% to 3.43% ^{240}Pu



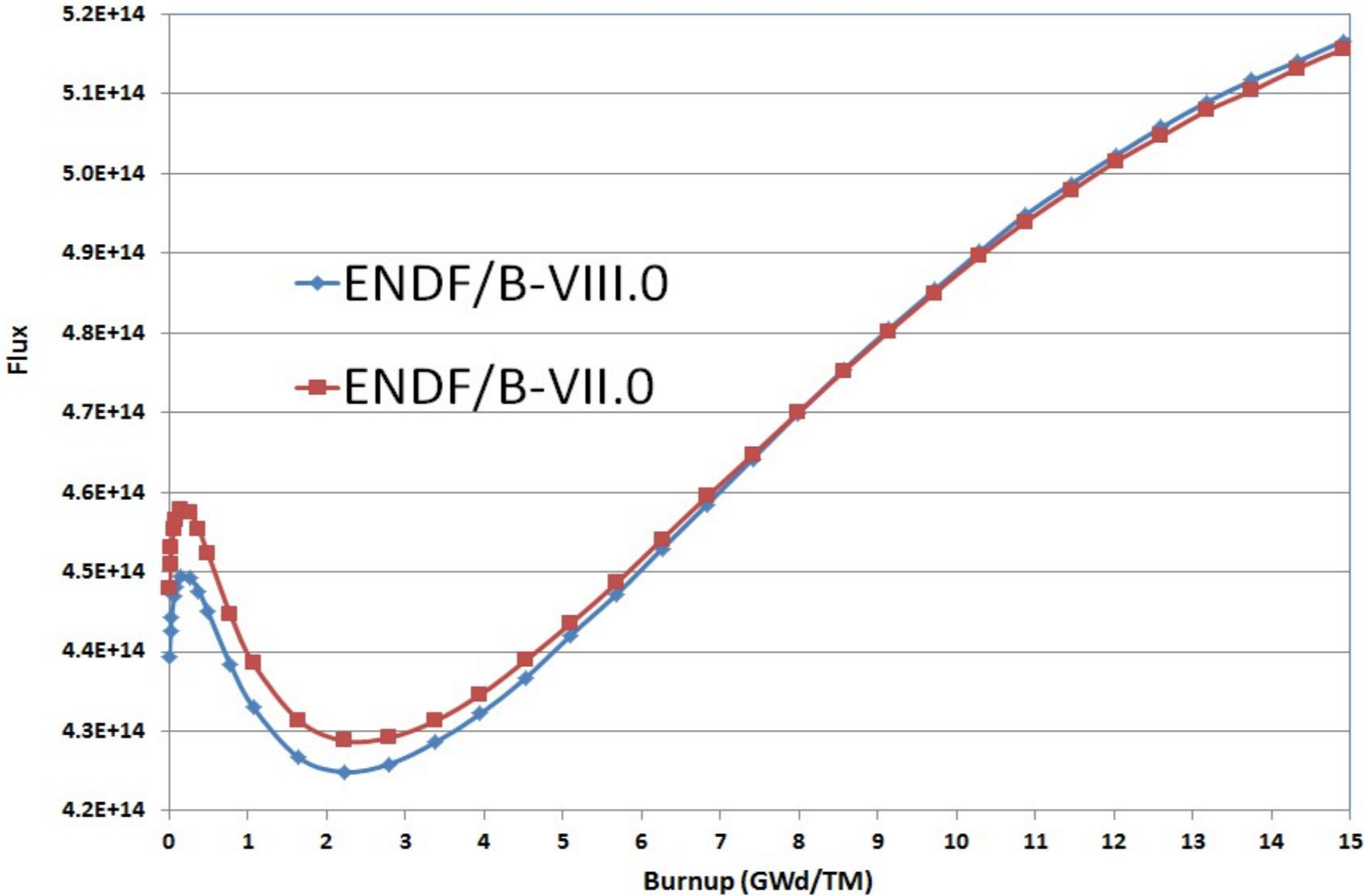
Comparison in Pin Burnup Between ENDF/B-VII.0 and ENDF/B-VIII.0



K-Infinity as Function of Burnup



Cell Flux as Function of Burnup



Average Nu as Function of Burnup

