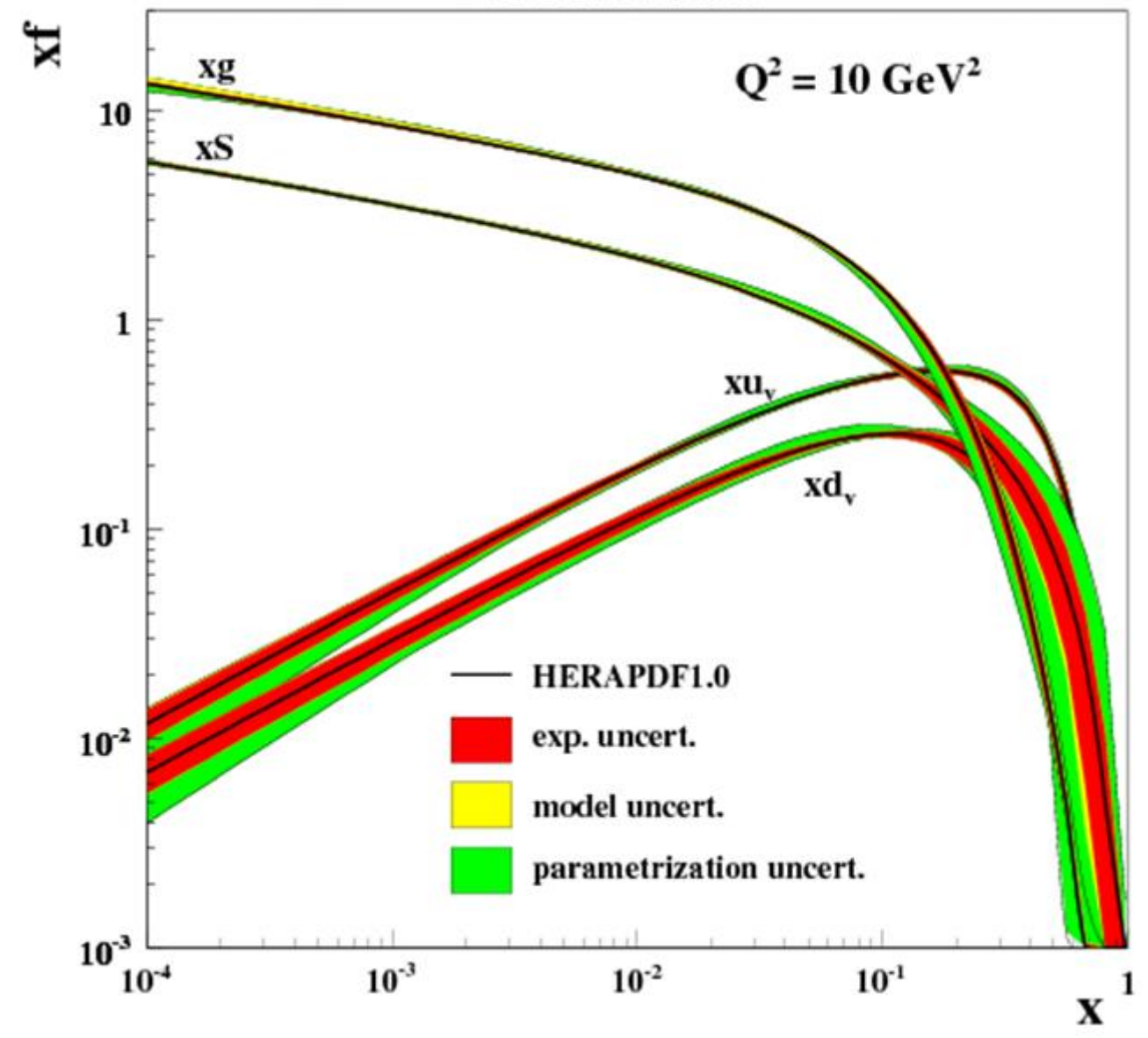
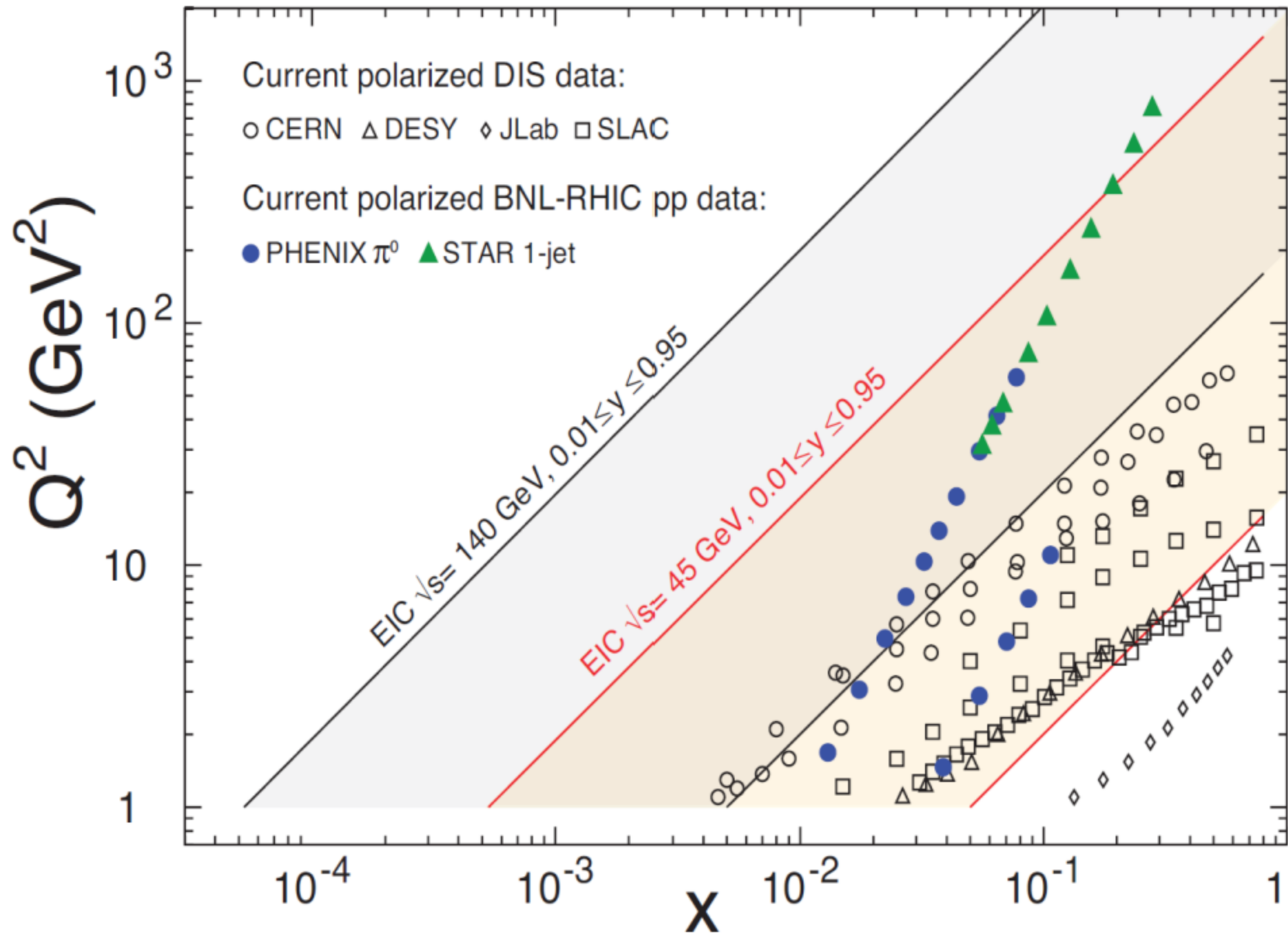
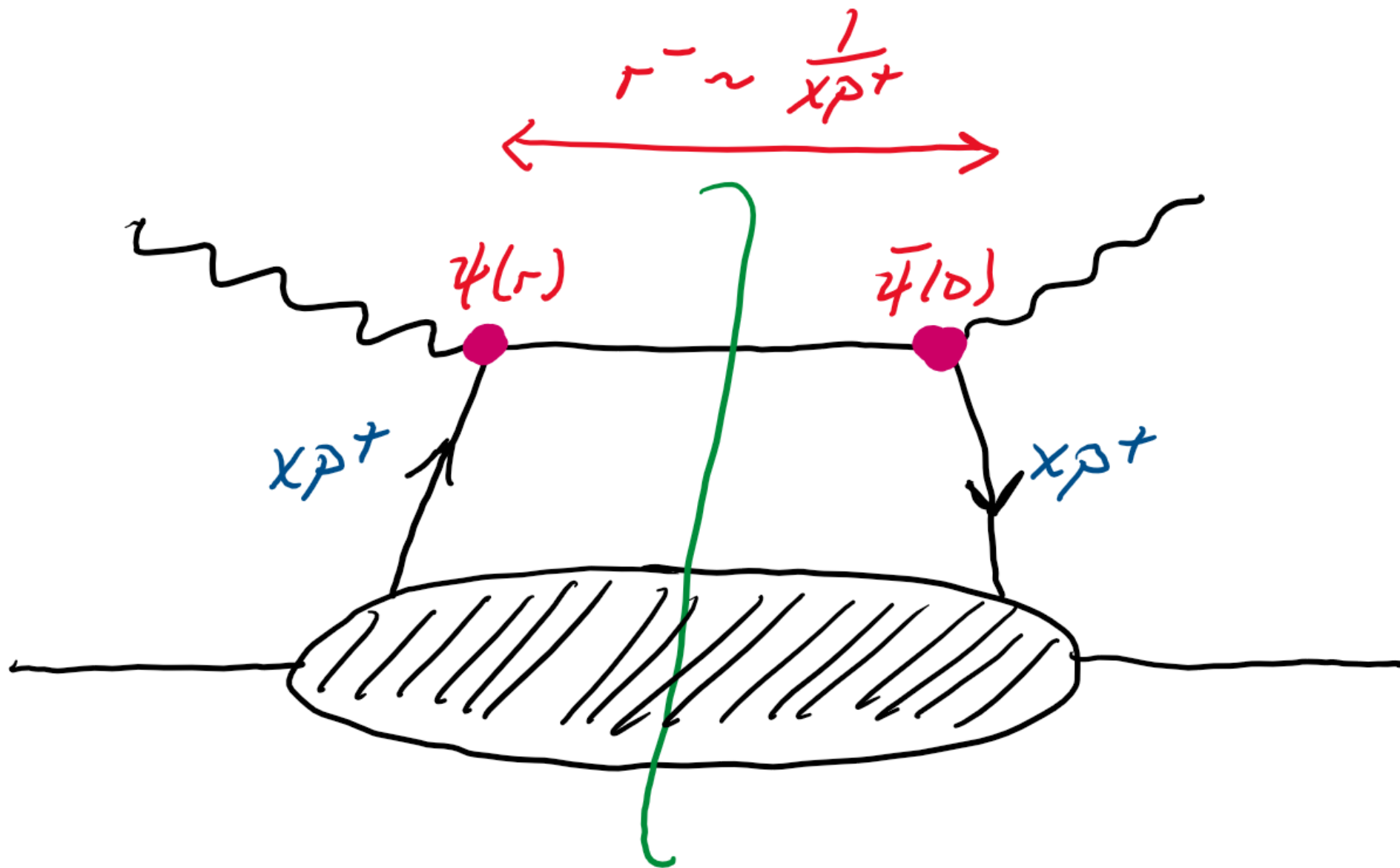
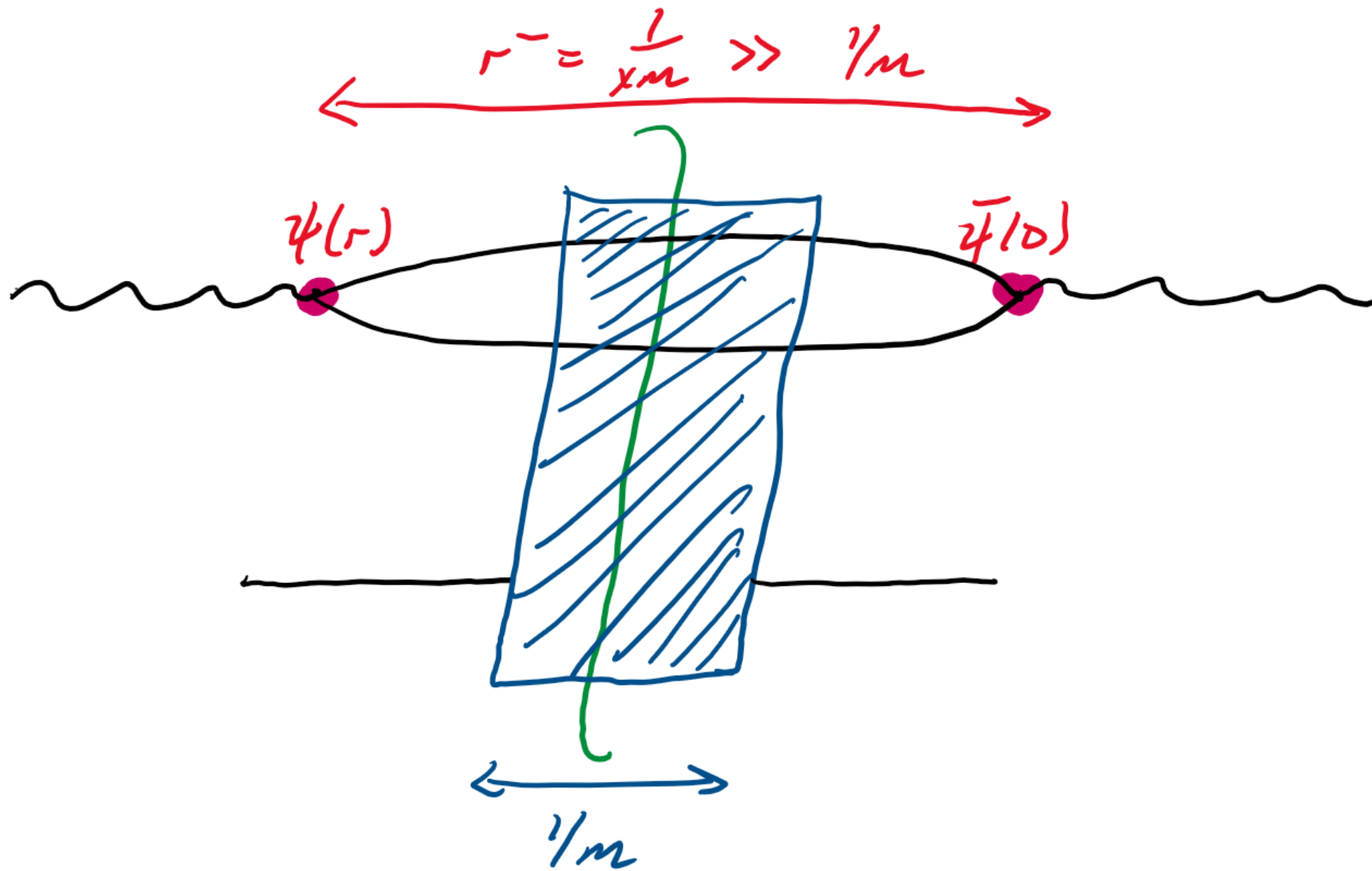


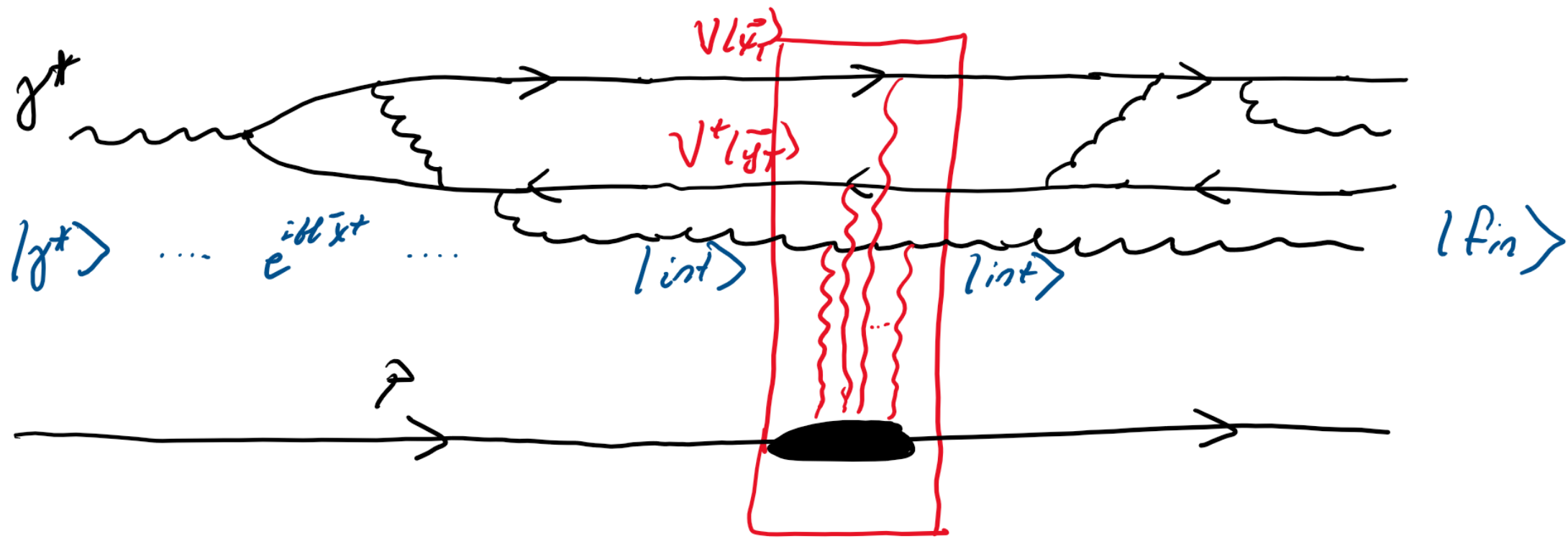
H1 and ZEUS











$$\underbrace{\langle \text{fin} | e^{i\mathcal{H}\bar{x}^+} | \text{int} \rangle}_{\psi^*(\vec{x}_T, \vec{y}_T)}$$

$$V(\vec{x}_T) V^+(\vec{y}_T) \dots$$

$$\underbrace{\langle \text{int} | e^{i\mathcal{H}\bar{x}^+} | \gamma^* \rangle}_{\psi_{\gamma^*}(\vec{x}_T, \vec{y}_T)}$$